

Delivered free to 10,000 homes and businesses across East Finchley

## Parents fear nursery will not survive

By Lynn Winton

**Parents of children at an “exceptional” East Finchley nursery that is due to be demolished and replaced to make way for a development of 75 homes say it may not survive the upheaval.**

A group of 81 parents at Monkey Puzzle Nursery have signed a letter to Finchley and Golders Green MP Sarah Sackman voicing their concerns about the changes being proposed as part of the Cherry Tree Quarter development on the nursery site opposite East Finchley tube station.

Whilst the developers Places for Barnet have created a new area for the nursery to be repositioned within the development, the parents say it will be a smaller building and have less outdoor space.

“No grass, trees, mud or anything else in the cold, clinical drawings, which are more suited to an outside office space. And regarding size, a significant downgrade on the space we have now.” The letter continues to voice concerns over how the huge building project will be managed safely with small children on site, which is bound to be disruptive and with concerning levels of dust and noise pollution.

Katherine is sceptical that Monkey Puzzle will survive these changes as they stand, saying: “There is real risk that a small, cramped nursery with minimal outdoor space will not survive, and even before then, parents are worried about how the build will be managed.

“We appreciate that in London, affordable housing, none of which is being built on



Fast on their feet: Young players take part in the football tournament at Christ's College Finchley. Photo Mike Coles

## Footballing stars of the future

**While the Women's Euros were well under way in Switzerland last month, there was another female football tournament closer to home at Christ's College Finchley in East End Road, N2.**

The sporting event on Saturday 12 July was to mark the 10th anniversary of East Finchley Women's Football Club and four years of East Finchley

Girls Academy.

The women's club started in 2015 with a dozen players and has grown to have more than 100 members with teams playing competitively in five, seven, eight and 11-a-side formats.

The girls' academy began as a kickaround in Cherry Tree Wood and now has 120 members aged between eight and 14.

The joint celebration day featured an under-eight

tournament against teams from Alexandra Palace and Whetstone, followed by the grown-ups playing their own series of matches.

Coach Andy Francis said: “It was a great tournament with some memorable goals scored and great play all round. Nobody took it too seriously and fun was definitely priority number one.”

Find out more at [efgirls.co.uk](http://efgirls.co.uk) and [efwfc.co.uk](http://efwfc.co.uk)



Established: Monkey Puzzle Nursery. Photo Places for Barnet.

### Safety Issues

Parents' spokesperson Katherine Cox is alarmed by safety and safeguarding issues on the proposed new site and has requested in the letter that play specialists and nursery designers are consulted to guarantee the new space is fit for purpose.

Additionally, she has an issue with the outdoor play area:

this site, is in very short supply. But so are nursery places. And this isn't an ordinary nursery providing standard 'good' provision, this nursery is exceptional.”

Monkey Puzzle owner Paula Murphy, who has been working with Places for Barnet on the...

**Continues on Page 2**

### Tell us the news

Have you got a news story or an interesting photo for us? Our readers are our eyes and ears, and we are always pleased to hear what is going on in East Finchley. Tips, ideas and stories, large or small, are very welcome. Please email [news@the-archer.co.uk](mailto:news@the-archer.co.uk) or leave a message on our free phone line 0800 612 0748. Thank you

### STEWART DUNCAN

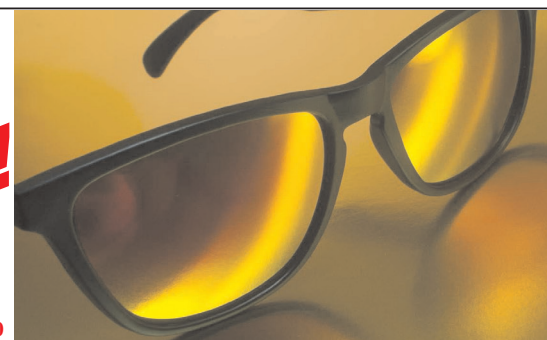
YOUR EAST FINCHLEY OPTICIANS since 1962

BUY PAIR OF  
GLASSES AND GET  
PRESCRIPTION  
SUNGLASSES  
COMPLETELY

**FREE!**

STANDARD CONDITIONS APPLY  
FOR DETAILS ASK IN STORE OR

CALL 020 8883 2020



### In this issue

Be Part of It.....p2  
 High Road rubbish..... p3  
 Homes meeting.....p4  
 Crime updates.....p5  
 Oak Lodge School..... p6  
 Emmy winner.....p10  
 Your letters.....p11

CELEBRATING  
250  
YEARS

**PRICKETT  
& ELLIS** ESTD 1767

East Finchley Office  
 82 High Road, N2 9PN  
 020 8883 0033

[eastfinchley@prickettandellis.com](mailto:eastfinchley@prickettandellis.com)  
[www.prickettandellis.com](http://www.prickettandellis.com)

SALES & LETTINGS AGENTS | SURVEYORS | VALUERS | PROPERTY MANAGEMENT