

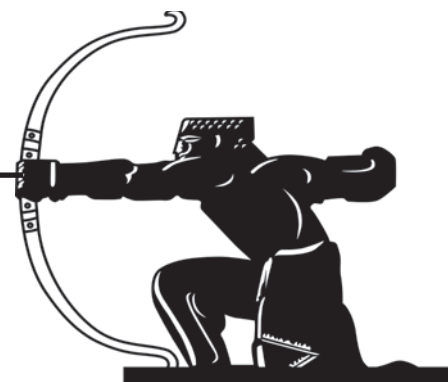


residential sales • lettings • management
020 8444 5222
www.jeremyleaf.co.uk

ISSN 1361-3952
20p
where sold

The Archer

Local News is our Aim



July 2021 No. 327

A community newspaper for East Finchley run entirely by volunteers.



Tidy-up team: Sasha, Mala and Mara de-litter the playground in Market Place.

Litter pickers out in force

These three youngsters are among dozens taking action into their own hands to keep the playground where

they enjoy spending time free from unsightly and dangerous rubbish. Sasha, Mala and Mara, who all go

to Martin Primary School, are regulars at the monthly litter picks at the Market Place Play Area in East Finchley.

Picking up litter helps to keep our streets and parks pleasant places to be... although it would be even better if no one dropped their rubbish in the first place! Turn to page 3 for the full story.

New Grange homes plan at a crossroads

By Janet Maitland

Barnet Homes and local residents have reached an impasse over proposals to build 64 new council homes on the Grange Estate in East Finchley to tackle the local housing shortage.

Residents report that the consultation process, run by NormanFrancis, is not reaching them. They are also angry that most of the new homes will be built on Brownswell Green where three houses will be demolished. Residents want an indication that this five-storey block will be reconsidered. They feel equally strongly about the loss of green space on Tarling Road.

Residents organise

The consultation began last September, but it wasn't until April that the plans became public via social media when a resident posted that they had just been told their home may be demolished. Two Residents Associations were then constituted, one for the Grange, Brownswell and Tarling Road (GBTR) and the other for Tarling Road and Sylvester Road (TRSR).

Since then a petition signed by nearly 700 residents has been submitted to the Finchley and Golders Green Residents Forum. One demand is that the consultation should be based on "clear principles agreed with the community, e.g. new develop-

ments should not destroy high/medium rated public green spaces".

Consultation problems

In early May, NormanFrancis corrected its mailing list, which had inadvertently not included Brownswell Road or Tarling Road, and augmented their consultation methods. Three Zoom surgeries were



Redevelopment: A notice to Grange residents

offered. They also began to knock on doors. Just over five weeks later, a spokesperson from Barnet Homes told The Archer that only one resident had attended a Zoom surgery. They had managed to speak to 38 households on their doorsteps.

We asked if they'd met with residents whose homes may be demolished. "We have met in person as well as having phone/email correspondence," said the spokesperson.

Continued on page 2

CELEBRATING 250 YEARS

PRICKETT & ELLIS ESTD 1767

East Finchley Office
82 High Road, N2 9PN
020 8883 0033

eastfinchley@prickettandellis.com
www.prickettandellis.com

SALES & LETTINGS AGENTS | SURVEYORS | VALUERS | PROPERTY MANAGEMENT

Find your new home today...

Successful independent estate agent, established since 1992
Residential and commercial, sales, lettings and management specialists
Our friendly and helpful staff provide a professional and genuine service
Our office is situated 100 yards from East Finchley Station

Estate Agents Valuations Sales Lettings
Overseas Properties Management Services

Prime Locations

40 High Road, East Finchley
London N2 9PJ
www.primelocations.co.uk
enquiries@primelocations.co.uk
020 8883 9090

EVERYTHING ELECTRICAL
38 HIGH ROAD, N2 9PJ 02084447994

KEEP COOL THIS SUMMER WITH OUR FULL RANGE OF FANS WE ARE NEVER UNDERSOLD!!!



The Archer

PO Box 3699, London N2 2DE

www.the-archer.co.uk Email: news@the-archer.co.uk

[f](#) [t](#) [@](#) [TheArcherN2](#)

Voicemail (messages only) 0800 612 0748 for editorial and general enquiries or 0800 612 4027 for Advertising enquiries only

Published by
East Finchley Newspapers

Copy Editor
John Lawrence

Production Editor
Alison Roberts

Picture Editor
Mike Coles

Editorial Team
Diana Cormack
Daphne Chamberlain

Sub Editors
Ann Bronkhorst
Jeff Robson
Lucy Moorman

Finance & Advertising
John Dearing

Distribution
Toni Morgan
Jane & David Marsh

Printed By
Sharman & Co Ltd

Thank you to The Bald Faced Stag and New Local Cafe for providing us with a meeting place.

The Archer team wishes to thank all the generous people who give up their spare time, in all weather, to deliver the paper for us.

If you have a story for us, please contact us at the above address. Comments to The Archer may be published unless clearly marked 'Not for publication' within the text.

Copy deadlines – **August: 16 July** **September: 13 August**
October: 10 September



Pile 'em high: Fruit and vegetables among the produce on sale at the Victoria Park Sunday market.

New Grange homes plan at a crossroads

Continued from page 1

But Rebecca Weston, chair of the GBTR association, told us there had been two promises for a meeting with the three households but neither had yet come about, leaving all of them very anxious.

Criticism of Barnet

Homes

We asked Barnet Homes if they'd met with the Residents Associations. "Our understanding is that these two groups are not formal Residents Associations," was the spokesperson's response.

East Finchley councillor Arjun Mittra accused Barnet Homes of losing the plot. He said: "We have had a number of meetings with them and read them the riot act about how to engage with residents."

Morgan Saunders, chair of the TRSR association, told us: "We are disappointed that no one is available to discuss the concerns of the 109 households we represent. This is disrespectful."

"We would welcome a meeting," said Sachin Patel, secretary of the GBTR association. "Although the pandemic has caused complications, that is not a total excuse for the shambolic way Barnet Homes has approached these developments."

More work for residents

The GBTR association is organising a summer event off their own bat to display all the plans in one place and to answer questions, with the help of the three resident members of the Resident Interest Group, set up by NewmanFrancis.

Take your pick at market in park

A new fresh produce market is taking root at Victoria Park, N3, running every Sunday from 10am to 3pm. Farm products, cakes, bakery items, beers and plenty of street food options are all available, many of them from independent traders. You'll find the market at the Ballards Lane entrance to the park, close to the bowling green.

Monthly meeting of N2United gets steamy

By Lynn Winton

Host Nick Allan opened N2United's June online meeting with *Hot in the City* by Billy Idol, summing up the weather conditions for most at the time. It set the tone for a steamy meeting with news and updates from a range of local enterprise including KOKOS, UOE, Grange Big Local, The N2 Food Project (on Tuesdays outside the Phoenix Cinema) as well as new businesses including Deepsym.

Making their regular appearance, two of our busy local councillors, Claire Farrier and Alison Moore, provided an update on important local matters affecting us all and news that there will be a minor review in September into the cycle lanes and their

effect on the area, especially parking.

We continue to promote some of East Finchley's unique shops, cafés and creatives on our website (see N2United.co.uk/N2Unique) to provide an insight into the inspiration for people's businesses as well as their connection to our community.

Manager of KOKOS, Chris Stavrou, said: "There are not many places that have such a unique organisation looking after their neighbourhood. There is so much we can do together to make N2 the best it can be and keep people buying local and keeping their spending in N2 and not elsewhere!"

The next meeting is free and open to all on Thursday 8 July and will include news of the N2United 'Summer Social' with plans for September and beyond. See N2United.co.uk

Can you help us deliver?

Many thanks to all our new distributors and deliverers who came forward during the various lockdowns to make sure *The Archer* continued to reach homes and businesses across East Finchley.

Our team of over 80 volunteers ensure that all residents are kept informed about what's going on in our area and we couldn't manage without them.

However, we are still in need of a few more helpers who could take on one or more of the following rounds:

• **High Road (west side, north of the Methodist Church up to Netherwood)**

• **Great North Road (Mansfield Heights, Doran Manor, Linksvie)**

• **Aylmer Road and Manor Court**

• **Aylmer Parade (shops and flats above)**

• **Widcombe Way**

• **Lyttleton Road (north side)**

Rounds usually take around 30-45 minutes once a month and papers are delivered to your door. If you are interested in taking on one of these rounds, or maybe helping with dropping to deliverers, please email us at news@the-archer.co.uk or leave a message on our Freephone line 0800 612 0748. Many thanks!

PLANNING APPLICATIONS

Barnet Council

115 Abbots Gardens, N2

Roof extension involving hip to gable, rear dormer window with Juliet balcony, three front roof lights and one front roof window. **Bald Faced Stag, 69 High Road, N2**

Externally illuminated: two fascia signs, one projecting hanging sign, one aluminium panel, one hand-painted sign. Internally illuminated: one brass sign, one aluminium sign, one aluminium panel, six brass up/down lights, four pewter/brass lamps, nine aluminium lights.

5 Beaumont Close, N2

Submission of air pollution mitigation measures, pursuant to planning permission dated 21/03/2021.

Land rear of The Bobath Centre, 250 East End Road, N2

Three-storey building plus

rooms in roof, comprising 25 self-contained residential units (Use Class C3), with associated plant, car parking, cycle parking, refuse stores, hard and soft landscaping, and associated works.

32 Brackenbury Road, N2

Single-storey side extension, following demolition of rear extension. Roof extension, involving rear dormer window

7 Chamberlain Road, N2

Single-storey rear/side extension.

3 Dixey Cottages, 97 Great North Road, N2

Part single, part two-storey side and rear extension.

174 East End Road, N2

Conversion of garage into habitable space. Replacement of garage door with window.

18 Fairlawn Avenue, N2

Single-storey rear extension, following demolition of existing

conservatory.

84 Hertford Road, N2

Increase of window and sky light size.

339 High Road, N2

Single-storey side and rear extension.

4 Lincoln Road, N2

Roof extension, involving rear dormer window and three front rooflights.

1 Manor Drive, N2

Demolition of existing dwelling, and erection of two storey dwelling with rooms in roof space and basement level.

92 Ossulton Way, N2

Roof extension, involving side dormer window and two rear rooflights.

71A Park Hall Road, N2

Single-storey rear extension with new side windows. Alterations to existing outbuilding to include new door and rooflights.

Art auction

An Easter auction of art and craft works by the East Finchley Open Artists group raised more than £2,000 for the Homeless in Barnet charity.



Litter campaign is really picking up

By Diana Cormack

Following our front page article last month on the litter problem on our streets and in our parks, we are pleased to report that many people in the community ARE tackling it from the ground up.

For example, The Friends of Market Place Playground, close to Holy Trinity Primary School, N2, hold a litter pick on the last Sunday of the month. Whilst Barnet Council's Street Team do the majority of rubbish clearing there, they cannot always be on duty and the Friends believe it to be very much the responsibility of users to keep the space clean, safe and pleasant to be in.



Great little grabbers

Working with the Street Team who provide the necessary equipment along with some funded by Grange Big Local, the main participants are parents and children who use the playground. Children form 50% of the pickers, with child-sized grabbers provided especially for them. For safety they are closely supervised, wear gloves and watch out for sharp objects.

Organisers say the youngsters love working as a team and feeling part of the community in making the effort to keep their playground clean. Plus they are rewarded with a drink and

a snack at the end.

With their fifth litter pick due this month, the main items collected consist of alcohol containers, dog poo bags, sweet wrappers and fast food boxes. Cutlery, car parts and old toys have also been found. They ask you to report any rubbish like broken glass in the playground to Barnet or email friendsofmarketplace@gmail.com so it can be cleared up. If you'd like to join in, their next one is at 10am on Sunday 25 July.

Park pick-ups

The Playground Friends picked up some hints from veterans of the Friends of Cherry Tree Wood litter picks which have been going for several years. They are held at 4pm on the second Sunday of each month. The most recent on 13 June produced less litter because, two days previously, a group of Barnet employees had collected there as part of the Great British Spring Clean week organised by Keep Britain Tidy. There are also several locals who regularly do their own litter picks in the park. For more information visit friendsofcherrytreewood@gmail.com

Of course, if everyone binned their rubbish or took it with them in the first place there would be no need for litter picks.

Person struck by train

By Janet Maitland

A person was hit by a train at Woodside Park tube station in North Finchley on Thursday 3 June. They were treated at the scene and then airlifted to hospital by the London Air Ambulance. "Their injuries are not believed to be life threatening," said a spokesperson at British Transport Police.

Emergency services were called to the station at about 3.30pm following reports of a casualty on the tracks. The London Ambulance Service

sent ambulances, a hazardous area response team and the air ambulance. British Transport Police and the Fire Brigade also rushed to the scene.

Woodside Park Road was closed, buses were diverted and the Northern line was out of action in both directions until the all-clear was given. British Transport Police said the incident is not being treated as suspicious.

A Local Handyman

available for general household & garden maintenance.

No Job Too Small

Free Estimates

Call John on: 0789 010 3831
or: 0208 883 5325

Midhurst Butchers

Certified organic meat
at reasonable prices
Free-range poultry
Home-made sausages
(including Boerwors)

2 Midhurst Parade,
Fortis Green, London N10
Tel. 020 8883 5303

Greene Driving School

East Finchley N2

From **£20.00** per hour
for 2 hr lesson

Safe driving for life

Small manual Low Co2 Car
Eco & Low Maintenance Tuition
Pass Plus 4 cheaper Insurance.

Call John M.L.M.I

0773 851 4406 greenedriving.co.uk



On alert: Police inspect the suspect item in the Bedford Road back garden.

Roads closed after alarming find

By Ann Bronkhorst

It was a fine afternoon for gardening on Thursday 10 June but Solveig Feralet, of Bedford Road, N2, was not expecting to dig up a heavy object about 10 inches long and to face possible evacuation if it turned out to be a bomb.



Closed: Bedford Road and Huntingdon Road were both closed.

Photo Mike Coles

She was impressed by the prompt police response when she reported her find; they took the matter extremely seriously, closing both Bedford Road

and Huntingdon Road as the object was in a back garden between both roads. Children returning from school could not access their homes and curious

residents were not allowed to venture outside.

One neighbour was surprised to be told that the object might be a mortar shell, but after carefully cleaning it police specialists established the truth: it was probably a heavy metal weight from the inside of an old 'grandfather' clock. Solveig's amused response later: "Silly, and perfect."

The roads were reopened, everyone was safe, but in some parts of the world, Syria, Ukraine, for example, finding an unexploded device is a common occurrence and deadly serious. Even here there are still occasional discoveries of UXO (unexploded ordnance) and it is good to know that our police treat every report seriously.



Uncovered: The cause of all the trouble

Music therapy tunes in to grant aid

A new round of grants from Grange Big Local is currently underway for community projects in the area around the Grange estate and nearby parts of East Finchley.

Just starting in-person is the Tuesday Club, a music therapy workshop for young people from the GBL area, run by North London Music Therapy. These workshops will allow teenagers to learn more about music through lyric writing and music software, whilst learning to express their emotions in a safe environment.

There will be six different sessions, on Tuesdays at 5.30pm through until 20 July at Avenue House on East End Road, N3. Dinner and travel are included, and no previous experience in music is neces-

sary. To sign up or for general enquiries email: marianne@northlondonmusictherapy.com

ARE YOU LIVING WITH A FEAR OR PHOBIA?

Does it baffle and frustrate you?

Does it limit or dominate your life?

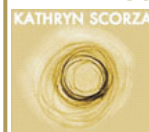
There will be a good reason why you have this problem.

HYPNOTHERAPY CAN HELP CLEAR DISABLING FEARS AND PHOBIAS PERMANENTLY, USUALLY IN JUST A COUPLE OF SESSIONS.

Free, no-obligation, introductory chat

Call or email me to find out more:

kathryn@kathrynskorza.co.uk 020 8444 5498 07703 404 839
www.kathrynskorza.co.uk





Donations, please: Dario with one of the food boxes that will be available in every Martyn Gerrard office.

New drop off point for food donations

East Finchley's branch of Martyn Gerrard estate agents in the High Road is to become a drop off point for donations to North London charity Food Bank Aid.

The firm has partnered with the charity to support over 12,000 people a week who require support as a result of pandemic hardships. Tinned food, long lasting vegetables,

rice and toiletries are the most in demand items.

Martyn Gerrard's managing director, Simon Gerrard said: "It is incredibly important for all businesses to look to their communities and see what can be done to offer support to those who need it."

Boot sale back again

The monthly Muswell Hill Indoor Car Boot Sale takes place on Saturday 31 July from 10am to 1pm at Hornsey Parish Church Hall, at the foot of Muswell Hill on the corner of Cranley Gardens and Park Rd, N10 3AH.

For information, phone 020 8368 8180. Admission is 50p with refreshments available.

Changes to book loan rules at libraries

Barnet Libraries last month announced that the automatic renewal of items on loan was ending on Monday 21 June. From now on, you will need to renew or return items every three weeks. This will help to reduce waiting times for popular items.

You can renew items:

- online at <https://capitadiscovery.co.uk/barnet/home>
- by phone. Call your local

library www.barnet.gov.uk/libraries/find-your-local-library

• or in person during opening times, which you can find at www.barnet.gov.uk/libraries/library-opening-times.

You will need your library card number and PIN to renew items.

Barnet says that the Libraries Department is working to re-introduce face to face events. Register at www.barnet.gov.uk/librarynewsletters to keep up to date with the latest events, service updates and book news.

Emergency Denture Repair and New Dentures



103a Golders Green Rd NW11 8EN
020 87318611
<http://www.mydenturedirect.co.uk>

By Janet Maitland

Cars are being stripped of their catalytic converters at a rate of three a day in Barnet, making it the worst-affected borough in London. Thefts of these valuable car parts have risen sharply across London, with nearly 15,000 cases investigated in 2020 compared to 9,500 the year before.

An ITV News report on 24 March featured a Finchley resident who left his car to challenge four men who were stealing a converter. He'd only just made it back to his car when they came towards him carrying metal bars. "They were so brazen," he said. East Finchley residents have alerted fellow drivers on social media after falling victim themselves. "These criminals often commit their offences in full view of the vehicle owners, leaving them terrorised," said DCI James Stanyer, from the Met's motor vehicle crime unit. "They're willing to use violence if necessary, if disturbed."

Organised crime

Catalytic converters (cats) have become so desirable to thieves because the prices of the precious metals they contain such as platinum, rhodium and palladium have risen. It also only takes a few moments armed with a jack and some basic tools to steal one.

Residential streets are now prime targets, ever since the retail parks that were previ-

ously the gangs' main hunting ground lost most of their customers due to lockdowns. Organised crime controls the market, with unlicensed or unscrupulous licensed scrap merchants extracting the metals or shipping the cats abroad as high-value scrap.

Three hundred police officers carried out raids in east London, Kent and Essex in late March. Eight homes were raided in one street, where three men were arrested and 18 cats seized along with an angle grinder, £50,000 in cash and a quantity of drugs. In Essex, a shipping container

full of cats and car parts was intercepted before it could be transported to Ivory Coast. Fifteen men are still wanted.

How to protect your cat

Park in a locked garage or in a well-lit, busy area. If that's not possible, police advise you to park close to fences, walls or kerbs with the exhaust closest to the barrier. If your cat is bolted on, ask a garage to weld the bolts. Consider a 'cage clamp' which locks around the converter or install a Thatcham-approved alarm that activates if your car is lifted or tilted.

SAFER NEIGHBOURHOODS

LOCAL POLICE, LOCAL KNOWLEDGE

Jan Lovell, of the East Finchley Safer Neighbourhood Team, updates us on the latest crime news. Jan and the team can be contacted by email at: EastFinchley.snt@met.police.uk, or by phone on 020 7161 9014. Follow the team on Twitter @MPSEastFinchley.

Shed and garage security

In a recent newsletter I reminded folk about home security advice against burglary. There have been several thefts and attempted thefts of pedal cycles from sheds, garages and cycle stores. If you have a cycle, please take a look at this shed and garage security advice:

- Use bolts through the door and frame or non-return screws.
- Windows should have good locks and can be secured with internal diamond mesh grilles. If you never open them consider screwing them shut from the inside.
- Use two large hasps and staples on the doors and two closed shackle padlocks on the outside.
- Garage side and rear doors can be secured with BS3621 5-lever mortice locks and two internal mortice rack bolts, at the top and bottom.
- Security mark and register your bicycle with BikeRegister. Secure your bike to a ground anchor.
- Garden tools, like spades, are often stolen from sheds to lever open windows and doors. Lock away tools and equipment and secure ladders as an intruder can use them to gain access. Also, property mark your tools.

Finally, consider fitting an alarm to your shed or garage either by extending your home alarm or buying one especially. A door contact system may also be suitable and limits the risk of false alarms.

Nicky Sharp Osteopathy Clinic

Cranial and Structural Osteopathy and Acupuncture
All Major Insurers Accepted

For consultations and appointments:

Telephone: 020 8815 9433

260 East End Road
London N2 8AU

www.nickysharposteopathy.co.uk
e-mail: info@nickysharposteopathy.co.uk

Japanese Acupuncture Clinic Finchley

www.japaneseacupunctureclinicfinchley.com
1 Bedford Mews, East Finchley N2 9DF

Marian Fixler
07966 411582

Fiona Hurlock
07795 203107

Julian Ormerod
07947 409809

Acupuncture & Moxibustion Chiropractic & Yoga

Holy Trinity Parish Church

67 Church Lane, N2 0TH

www.holytrinityeastfinchley.org.uk

We are a community who welcomes everyone seeking comfort and strength in love, faith, and hope. We meet both in church and online. Please do 'come and see'.

Holy Communion: Sunday @ 9.30 am - In Church
Bible Readings & Prayers: Sunday at 11.00 am - Online
Morning Prayer: Monday to Friday, at 9.00 am - Online

For more information please contact us:
Email: marius.mirt@htef.org.uk Tel: 020 3565 4430



Wildflowers and kiosk hopes: news from the Wood

By Roger Chapman, Friends of Cherry Tree Wood
Summer has come to Cherry Tree Wood. The work of our wonderful gardening group is paying off with the orchard trees looking good and the pollinator plants in the developing meadow area attracting a great many bees and insects. Some of the beds we look after are wrapped in woven willow wands and the yellow irises in the bog garden have been blooming well in recent weeks.



Water garden: Yellow irises

Landmarks past and present

After mapping out some lockdown exercise walks from Sedgemere Avenue, N2, for himself and fellow residents, local historian Tony Roberts is now developing town trails for Finchley.

Places of interest are marked on a map and brief notes of each added. Some places still exist while others have bitten the dust. Tony says it is proving fascinating research and will take some time to complete.

He wonders if local residents can identify missing landmarks, past or present, for him to add. Take a look at his landmark walks at: www.tonero.me.uk/walksfromfinchley.htm. You will also find other walks there of interest.

The kiosk remains closed but hopefully not for much longer. There are new lessees so we hope to have a functioning café open again soon.

Regular litter picking takes place at 4pm on the second Sunday of each month and, touch wood, litter seems to be a bit more under control. It is always worth a reminder to please use the bins or, if they are full, take it home with you.

The refurbished tennis and basketball courts are proving extremely popular with the tennis courts fully booked for long periods.

In touch and involved

A group is working on improvements to the playground. Look out for a survey coming soon and if you want to get more involved in this work drop an email to us: friendsofcherrytreewood@gmail.com

The history of the Wood is long and varied. If you want to find about it then do take a look at our website: <https://friendsofcherrytreewood.home.blog/the-history-of-cherry-tree-wood/>

To keep in touch with the Friends, and to become a member (it's free – just sign up) and receive our newsletter, contact us via our email address above or join in one of our regular litter picks. We are always on the look out for volunteers and at the moment are looking to improve our website and social media presence. We could also do with some design skills help for our newsletter and posters. If you can spare some time for these do let us know.

Festival help

The East Finchley Festival team is seeking volunteers for an event set to take place in Cherry Tree Wood on Sunday 5th September.

They will need dozens of helpers on the day and also require a couple of volunteers to co-ordinate and organise activities in advance. If you think you might be able to help, please email eastfinchleyfestival@gmail.com

CARPENTRY & JOINERY Est 1962

Bespoke Built in Furniture, Wardrobes, Bookcases

Email: fandcshawltd@yahoo.com

Website: www.fandcshawltd.co.uk

Tel: 07999858816



Action-packed: The new basketball court in Cherry Tree Wood is well used. Photo Mike Coles.

Safety concerns over new basketball court

By Anthony Paphitis

Extensive renovation work to improve the basketball and tennis courts in Cherry Tree Wood has been completed recently, but issues are already being identified regarding the safety standards of the equipment installed.

Barnet Council spent upwards of £120,000 on resurfacing the single basketball and two tennis courts and installing new posts and nets, following calls from users to improve the safety and playing standards of the facilities.

Although there have been clear physical improvements, some users of the basketball court have noticed the equipment has not been installed at regulation level. Prior to redevelopment, it was agreed between the council and players that the hoops, posts and backboards would be of professional standard, to allow Cherry Tree Wood to hold competitive matches between local amateur teams.

Installers were recalled to correct the height of the hoops to the 10-foot regulation standard, but their attempts to fix the problem caused damage to the backboards. Users of the court have also spotted rust as a result of the backboard being cut to readjust the hoops, meaning the entire frame could be a safety risk just two months after being installed.

Gratitude but disappointment

Regular basketball player Kevin Lukau, a key stakeholder in pushing for the redevelopments, says he and the court's users are "incredibly grateful" to the council for making the improvements possible but is calling for the construction company responsible to be held accountable for the renovation's safety problems.

"The job they've done to adjust the rims has actually

made it less safe to use than it should be," Kevin said. "All they've done is cut the backboard and put new screws in which damages its condition and because it is outside we can already see signs of rust and deterioration."

"The disappointment for us is because it's an avoidable mistake. The council has done something for us and the community which we appreciate, but they could've taken stronger actions to ensure that taxpayers'

money is being spent properly."

Council response

Barnet Council has stated that the equipment is safe for use and that it is looking at other methods of altering the height of the hoops. A spokesperson said: "The boards are safe. This issue has been picked up as part of the snagging for the works. We are working with the contractor to find a solution that will ensure the hoops are at the correct height and installed correctly."



Repairs still needed: Kevin Lukau, back row centre, with his fellow players. Photo Mike Coles.

ACCOUNTANTS FOR SMALL BUSINESS

At TaxAssist Accountants we specialise in supporting small businesses.



- Business Accounts & Taxation
- Self Assessment Tax Returns
- Bookkeeping & VAT
- Payroll CIS & RTI
- Company Formations
- Initial consultation free with no obligation

020 8883 5258

www.taxassist.co.uk/eastfinchley



Ready to explore: Caroline and David Broome's garden in Church Lane, N2

Watch wildlife in your own watering hole

By Piers Reilly

Have you ever fancied yourself the next big wildlife presenter, a bit of competition for Sir David Attenborough? Well, why not try your hand at it, from the comfort of your own home no less. Certainly saves you the cost of a flight and safari.

Last month we suggested creating a wildflower meadow, this month I'm proposing a watering hole. Before you all run out to rent excavators to turn your back garden into a big pond and kidnap a hippo from a zoo, I mean this on a slightly smaller scale.



Landing pad: Encourage insects into your garden with a simple drinking dish.

All life requires water; for us this is simple to obtain, for wildlife, the situation is more complex, especially in the summer when many natural water sources cease to exist and their choices shrink to a handful. Here's where humans come in.

Build it and they'll come

Take a shallow bowl, fill it with water, and place it somewhere outside, preferably on a window ledge or a table. If possible place a twig inside as a place for bees to land. Now sit back and watch as your garden becomes a sanctuary that you can narrate over to your heart's content.

Ok, it's a little more complicated than that. For a few days not much is likely to happen, animals are suspicious as a general rule. If it helps, then

think of it as a bird feeder. In the beginning you'll have only a few visitors, then word gets out and you end up with a whole flock coming by every day. This is a similar situation, just change the water every few days and you'll have your own little troupe of animals wandering by for a drink.

Have the kids write down a log of all the creatures that come along for a drink and you've got a lovely summer project that will keep them engaged and occupied for weeks. Take the exceptional example at the Long Lane Pasture, where animals of all kinds gravitate towards their pond, or the stream running through Coldfall Wood, where birds and insects of all types thrive off this precious resource.

Garden gates to be thrown open this summer

By David Melsome

Some of our area's most beautiful private gardens are being opened for visitors to enjoy once again this summer, all of them raising vital funds for worthwhile causes.

First, Rachel Lindsay and Jeremy Pratt are opening their peaceful garden at 24 Twyford Avenue, N2 9NJ, on Sunday 11 July from 2pm to 6pm. Teas and plants will be on sale with all proceeds going to the National Garden Scheme charities.

Then, Susan Bennett and Earl Hyde open their very special garden at 5 St Regis Close, Alexandra Park Road, N10 2DE, on Sunday 25 July from 2pm to 6.30pm. Admission is £4 (children free) in aid of the National Garden Scheme charities.

Susan and Earl's garden has a temple, a pagoda and a studio, and has featured in many TV programmes over the years. You may have seen it recently as an interview setting for *Saved by a Stranger* presenter Anita Rani to talk to Darryl Telles about his upbringing in East Finchley, as featured in *The Archer* last month.

Finally, after a two-year gap, David and Caroline Broome are re-opening their award-winning



Wow factor: Susan Bennett and Earl Hyde's garden in Muswell Hill.

garden at 79 Church Lane, N2 0TH, where you can expect to be wowed by the profusion of Caroline's colourful planting throughout, interspersed with David's quirky ornamentals.

You can sit and enjoy home-made cakes on the tropical patio, in the shade of the apple tree, in the beach hut or in the sunroom,

as well as take part in a raffle and buy propagated plants and shed art. Entrance is £4 (children free) and the garden is open from 2pm - 6pm on Sunday 1 August in aid of Combat Stress and on Sunday 8 August in aid of the RSCPA Finchley, Golders Green, Hendon & District branch.



Bring and buy: Jane's pavement sale in full swing.

Plants replace cake in pavement sale

Unable to host her usual Cake Break indoor coffee morning in aid of MS Society for the second year because of the Covid pandemic, Jane Marsh thought of a different way to raise funds for this worthy cause.

The result was Plants and Pages, a very successful plant and book sale on Saturday 22 May, in the street outside her

house in the county roads. An amazing £560 was raised via sales and donations from friends and neighbours who turned out

to give their support on the day. Jane thanks everyone involved in helping to make the sale such a success.

Multiple Sclerosis is an auto-immune condition affecting an estimated 107,000 people in the UK. There is no cure, but advances in its treatment and management are being made all the time and fundraising plays an important part in facilitating this progress. To find out more about MS and/or make a donation, visit www.mssociety.org.uk

East Finchley Baptist Church

We meet each Sunday for worship at 10.30 am. If you would like to join us please go to our website for further details. All welcome.

**For more information please contact the Church Office
Email: office@eastfinchleybc.org.uk
www.eastfinchleybc.org.uk**



Greenery for everyone in the East Finchley Jungle

By Piers Reilly

A new initiative has come alive aiming to brighten people's lives with free plants and care advice. East Finchley Jungle is a community group formed with the goal of bringing houseplants to all, livening up our domestic settings while providing 'plant rehab' services for those of us struggling to keep our greenery alive.

Daisy Hale, local producer and artist, established the group after realising how limited access to green spaces was for some people during the year's lockdowns.

She says: "East Finchley is full of green space, allotments in particular, but these are not accessible for everyone." Daisy struck on the idea of houseplants, which require little space and can be selected based on each person's particular lifestyle.

Advice, supply, rehab

As an avid collector of plants for many years, she is full of practical advice for all situa-

tions. Low levels of sunlight? Desiccated your last fern from sheer neglect? Rotted roots plaguing your every step? No matter, she can find a plant for you and provide it free of charge, straight to your door, with a care booklet to help you on your way. If your plant falls ill, just contact the group and they will provide advice or even rehabilitate your plant for you until it is healthy.

Loneliness over the past year has been a constant for many people, and the East Finchley Jungle aims to alleviate this by providing a community focused on gardening that anyone can

be a part of.

Workshops on the way

Provided with a grant from the Grange Big Local, Daisy hopes to reach even more residents over the summer by holding workshops on plant care to encourage more people to get involved. To those who describe themselves as plant murderers she says: "Killing plants is part of owning them, it is an ongoing learning experience that anyone can undertake." So no need to be put off, contact the East Finchley Jungle and get learning. You can contact them and find out more via their Facebook and Instagram pages.



New leaf: Daisy Hale wants everyone to turn to cultivation.



Construction work: Resurfacing and re-seeding underway in Prospect Ring.

Noisy Sunday working halted at Prospect Ring

By Janet Maitland

Noisy and disruptive Sunday morning working by construction crews in Prospect Ring, N2, was halted after a resident complained and Barnet Council intervened. Work is currently nearing completion on road and pavement resurfacing in Prospect Ring following the construction of a new 14-storey tower block. The specified working hours within the license are Monday to Friday 8am - 5pm and Saturday 8am - 4pm.

"At 8am on Sunday 6 June, after listening to the loud construction noise and smelling hot tarmac from four large lorries blocking the road, I went down and spoke to numerous construction workers to ask them to stop," said the resident, who described their reaction as "increasingly aggressive".

After she left five messages on the Barnet Council noise complaints line, a council worker finally arrived at lunchtime and gave the construction workers 30 minutes to shut down and go. It took an hour for everyone to leave. "They told me the company will be contacted and fines explored and that being a subcontractor or behind schedule or Covid

were not excuses to break long-standing environmental laws," said the resident.

Apology from Barnet Homes

"We apologise to residents at Prospect Ring that highways works took place on Sunday 6 June," said a spokesperson for Barnet Homes. "These works were carried out without the knowledge of Opendoor Homes

or Hill, the site contractor. We have spoken to the subcontractor to ensure that Sunday working does not happen again.

"Hills will continue to inform residents in advance if work is to take place on a Saturday. We appreciate there has been disruption to residents during the construction of Gracie House and apologise unreservedly for any inconvenience caused."

'No contribution' to school next to tower block

By Janet Maitland

In an article in the June *Archer* about Prospect Ring residents' plans to ask Barnet Homes for compensation for the disruption caused by major building works over the last two years we used a quote given to us by Barnet Homes. It stated that the site contractors Hill had "donated money for laptops and also labour and materials to a local school and community gardening project".

Although the name of the school was not mentioned in Barnet Homes' quote and so was not used in the article, we had assumed this was Holy Trinity Primary School as it is next to the site where the new tower block is being constructed. We have since learned from Barnet Homes, however, that Hill was referring to their work with another local school.

A spokesperson for the governors of Holy Trinity

Primary School said: "There has been no contribution as yet from either Barnet Homes or the Hill Partnership to Holy Trinity Primary School, despite the disruption and continuing impact of this large-scale construction project right next door. "Contact has however been re-established following the article in the June edition, which hopefully will result in some meaningful support to the school and its pupils."

A fitting memorial to their many sacrifices

By Diana Cormack

On Sunday 6 June, 77 years after the event, the British Normandy Memorial was officially opened at Ver-Sur-Mer (see *The Archer*, November 2019). It commemorates the 22,442 men and women from 30 nations who gave their lives during the D-Day Landings and the subsequent Battle of Normandy from June to August 1944. Described as 'a memorial fit for heroes', it is the first time all their names have been put together.

Last year's scheduled opening was postponed due to the pandemic, which also prevented veterans and their families from travelling to France this year. So a parallel ceremony enabling them to participate took place at the National Memorial Arboretum in Staffordshire.

It included moving readings by past and present military

and, after all this time, several survivors were presented with the Legion D'Honneur. The veteran soldier whose suggestion started the struggle for the Normandy Memorial to be built placed his wreath at the arboretum altar made of military drums, then saluted his lost colleagues, an action repeated by many others.

Both sites are the responsibility of the Royal British Legion. For more information visit www.britishlegion.org.uk

FOLLOW US!



@THEARCHERN2

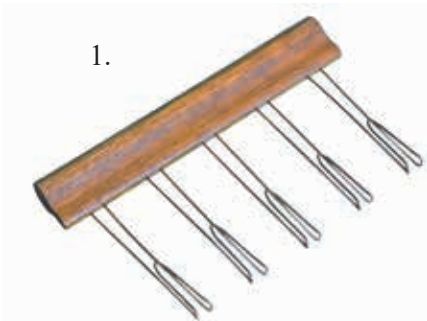


Slippery slope: Youngsters enjoying the new nursery play equipment.

New play area for pre-schoolers

Construction of a new play area in the front garden of Monkey Puzzle Nursery, opposite East Finchley station, is now complete and the equipment is in use following thorough risk assessments. At the official opening the honour of cutting the ribbon was given to pre-schooler Jenson who had been especially keen to start using it, asking anyone and everyone daily when it would be ready.

The children were spoken to about the safety rules, such as only going up the climbing wall and down the slide and how many of them could use the play area at once for it to be safe. They understood brilliantly and then finally got to enjoy the new activities, climbing, sliding and exploring with great delight. With thanks to Jenny Eracleous.



Did you guess the gadgets?

Here are the answers to our Guess the Gadgets quiz we printed in our June edition. All the Victoria gadgets come from the collection of local resident and author Maurice Collins, who is also the co-founder of children's charity Kith and Kids.

- 1. Harmonious times in the classroom:** Each prong of this tool held a stick of chalk to enable Victorian music teachers to draw evenly spaced lines on their blackboards
- 2. Up with the larks:** The bell on this sprung alarm clock would certainly have woken you up if you put it next to your bed.
- 3. Used on the farm:** This beautifully made wooden instrument is a butter churn, with a crank handle making it easy to keep your butter moving.
- 4. Basic pain stopper:** Fill this wooden instrument with ointment and you have a convenient and hygienic way to apply pain relief to your piles.
- 5. Ladies may figure this out:** In a time when bell-shaped figures were all the rage, this device was worn by ladies to shape and push out their undergarments.

One man and his menagerie

Tony Roberts tells the story of Sam Woodiwiss, a world-famous animal breeder, who once kept monkeys, exotic birds and rare breeds in kennels where Sedgemere Avenue now stands.

Sam Woodiwiss lived at Sedgemere House, East Finchley, where Sedgemere Avenue now meets East End Road, from around 1888 to 1901. At Sedgemere Kennels there was room for at least 50 dogs but also an extensive menagerie with monkeys, exotic birds and a piggery for rare breeds.

During this time, Woodiwiss introduced Dogues de Bordeaux bulldogs to Britain; his most famous dog was Baron Sedgemere, a bulldog who won Crufts in 1898 and sold for 350 guineas in 1899.

He also co-founded the Abyssinian Cat Club and the National Mouse Society. He was also a founding member and made a life member of the Essex Pig Society when it was formed in 1918.



Animal-lover: Sam Woodiwiss

Woodiwiss's work on breeding Abyssinian cats was world-famed. The first Abyssinians to appear in the National Cat Club Stud-book and Register were 'Queen Jumbo', followed by 'Sedgemere Bottle' and 'Sedgemere Peaty'. He was an experienced judge of cats, and could be counted among those cat fanciers who were also considered to be recognised authorities on dogs.

One of his cats, and another Crufts winner, Xenophon, was valued at £2,000 and was probably the most decorated English Short-hair in feline show history. He won eight

championships, more than 20 first prizes, besides cups and specials. A most homely cat of immense size, and with exceptionally fine sable markings, his pet name was 'The Man'.

Woodiwiss also showed prize goats at the Dairy Show from 1894. Besides an interest in the Toggenburg goat he was instrumental in firmly establishing the Anglo Nubian breed as well as being the owner of the famed goat Sedgemere Faith, believed to be the foundation female of the British Alpine breed. Find this and similar stories on Tony's website at www.tonero.me.uk/histnuggets.htm

Live music for the summer

A new chamber music festival has been launched in High Barnet to celebrate the start of summer and the gradual lifting of Covid restrictions. Located at St John the Baptist Church, High Barnet, the festival is promoting three concerts during mid-July.

Artistic Director Joshua Balance said: "It's an honour to be welcoming such fantastic musicians to our local community, and after the cultural deprivation of the last year it is abundantly clear how important live music is to our mental, spiritual, and social wellbeing."

The church is a five-minute walk from High Barnet tube station, so will be easily accessible for East Finchley residents. Concerts will start at 7.30pm on Saturday 17 and 24 and on Thursday 22 July. For more information, visit www.hbcmf.co.uk

FUN and MUSIC for BABIES and TODDLERS in N2 on **TUESDAYS** and **THURSDAYS** at 10am



with
LIVE ACCOMPANIMENT
ON VIOLIN AND GUITAR
at EAST FINCHLEY BAPTIST CHURCH,
Creighton Avenue



<https://www.facebook.com/teddybearsmusicclub>
<https://www.facebook.com/SteppingStonesEastFinchley>
or text 07836 284538



Mini-masterpieces: The Euros beer mats designed by (L-R) Israel Kujore, David Shrigley and Chris (Simpsons artist)

Place your pint on a piece of art

By John Lawrence

Football is back on the telly and fans are back in pubs (or pub gardens) so a new project is bringing the two together... European Championship beer mats.

Famous cartoonists like David Shrigley and Chris (Simpsons artist) have joined up-and-coming artists such as Robyn Nicol and Israel Kujore in contributing 20 iconic moments to the Weird Euros collection.



Designer: Gordon Reid

The project has been started by designer Gordon Reid, who lives in Heath View, N2, and friends in partnership with the adidas Football Collective and is raising money for grassroots football charities like Goals 4 Girls.

Each beer mat captures one of those iconic images that the Euros are famous for, not so much the famous goals, more the unexpected moments that stick in everyone's memory, for example Mario Balotelli's unforgettable muscle flex celebration after scoring for Italy against Germany in 2012.

Gordon told *The Archer*: "We were down the pub and looking for something to do for a good cause. We had a beer mat in our hands at the time and thought wouldn't it be great to be able to rest your beer on a great piece of art work. "A friend of mine knows David Shrigley and in two hours he said he'd be happy to get involved. Then others came on board and we got a full set of 20. The important thing is that it's all for grassroots organisations, so that football can be inclusive for everybody."

Spread the word

Gordon and his team have

been spreading word about the project through football TV, magazines and social media accounts.

You can take a look at the full Weird Euros collection and buy sets or combinations at www.weirdeuros.com

Demand for blood donors

Londoners are being urged to make and keep an appointment to donate blood over the summer months as demand for blood creeps back to normal capacity.

Nadine Eaton, Head of Blood Donation Marketing at NHS Blood and Transplant, said: "We are seeing a rise in demand for blood from hospitals, so we need our loyal donors more than ever to help us keep hospitals supplied with lifesaving blood. Each donation can save or improve up to three lives."

To book appointments, find your closest donor centres and check the latest guidance on Covid-19 and giving blood, call 0300 123 23 23, download the NHS Give Blood app, or visit blood.co.uk.

Desperate home carers in need of justice and respite

By Daphne Chamberlain

In the UK, one in three older people are carers, that's 4.1 million in total. Four million of those say they received no respite at all during the second lockdown. 40% of carers haven't had a day off for more than a year, and 69% say that their mental health has worsened because of a lack of breaks while caring during the pandemic.

Age UK says: "The pandemic has taken away so much of the help older carers depended upon. Social distancing means carers have been unable to lean on friends and family for support, and day centre closures mean there are fewer places for carers to take loved ones and get a break themselves. Many carers have also stopped getting help from paid care workers as they've been so worried about bringing coronavirus into their homes."

But the pandemic has simply made worse a desperate situation for so many people. Caring is so often a truly full-time job, on duty day and night.

Give them a proper break

Age UK has published these quotations from older carers: "I haven't had a complete break for the last 11 years. I'm so tired that I feel like I've forgotten how to smile."

"There have been many times where I just want to give up, where I wished I was dead. You just feel like you don't know where to turn. You've just got to try and pull yourself together and cope with it."

Age UK is calling for the Government to provide additional funding to enable carers to take a proper break, to do what they would like to do, even if that is just to sleep.

Phone and internet help

The UK free Advice Line is open seven days a week, 8am-7pm on 0800 169 65 65. Or, if you're feeling lonely and want a friendly chat, day or night, you can call The Silver Line on 0800 4 70 80 90.

Find information about care and support, and keep informed about the campaign for the Government to recognise unpaid carers, at www.ageuk.org.uk and Twitter: @ageukcampaigns.

RICKY SAVAGE ...

"The voice of social irresponsibility"

All over by Christmas

It was Freedom Day, a time of celebration to mark the end of a life-and-death battle between the virus and the vaccine. The champagne had been popped, a public holiday declared and the fountains were flowing with lager.

People came out in their hundreds of thousands, thronging The Mall in cheering drunken multitudes as they threw off their masks and burned them on the massive bonfire in Hyde Park. Inside the palace, an elderly lady donned her best lilac twinset and prepared to meet her people. As she stepped out onto the balcony it reminded her of that day in 1945 when her father had done the same.

As she stepped out surrounded by her children and grandchildren, all dressed in their military uniforms like the Ruritanian high command, the crowd cheered. To complete the picture, a cry went up across the massed gathering for the saviour of the nation to come forward.

And so, with all the reluctance he could muster, a three-times married father of at least six stepped forward to receive the country's adulation. Someone opened a bottle of champagne... but suddenly he awoke with a start to realise it wasn't champagne he could feel, but the dog licking his face.

And that's the problem with predictions: they go wrong. Back in August 1914, they all thought the war would be over by Christmas. It was, it's just that they were out by four years. It was the same with the flu pandemic that followed in 1918. Just when everyone thought the first wave was over, that virus got a second wind and kept going for another two years before fading away.

So, as 19 July approaches, and with it Freedom Day Part 2, The Sequel, don't make any plans just yet, because it may not happen. I am certain it will be over by Christmas, I'm just not sure which one.

Do you, or someone you know need a new home?



The Finchley Charities have been providing quality sheltered housing in a supportive community environment, across three sites in East Finchley and Finchley Central.

If you have lived in the Borough of Barnet for at least five years of your life, we can provide homes for individuals and couples aged over 55, in need of sheltered housing and able to live independently.

If this sounds like you or someone you know in need of a new home, please contact us on: 020 8346 9464 or email: info@thefinchleycharities.org to discuss eligibility.

020 8346 946
info@thefinchleycharities.org
www.thefinchleycharities.org

 **The Finchley Charities**

More than housing since 1488



Three brothers: One of the photos that will be on show at the Offshoot Gallery

Story of the pandemic on the faces of our children

By David Melsome

A startling new exhibition of photographs running this month at the Offshoot Gallery in East Finchley is exploring how the coronavirus pandemic has changed life for our children.

A year ago, photographer Bex Day lived with a friend and her two-year-old daughter, who had begun experiencing delays in speech development due to a lack of social interaction. This inspired Day to document how Covid-19 was having an impact on children during the formative ages from four to 13.

Children of Covid is full of haunting images that merge realism with surrealism taken in locations chosen in part by the young subjects themselves.

The exhibition is currently shortlisted for the British Journal of Photography's Por-

trait of Humanity Prize, Wolf Suschitzky Prize and the Royal Photographic Society's International Photography Exhibition 163.

See it for yourself at the Offshoot Gallery in the High Road, N2, from Friday 9 July to Sunday 25 July.

Workshops and discussion

On Saturday 10 July and Sunday 11 July there will be workshops for children aged eight to 11 on how to draw from photographs, running from 11am to 1pm.

On Wednesday 14 July from 6pm to 8pm there is a free panel discussion hosted by Jane O'Rourke from Mind in Mind and on Saturday 24 July and Sunday 25 July from 10am to 12pm there are workshops on art and wellbeing for children and young people. Find details on the exhibition, panel and workshops at www.minaraven.com

One-act plays after Chekhov

Garden Suburb Theatre's first post-lockdown live theatre production this month will be two one-act plays by Brian Friel featuring four characters from the works of Anton Chekhov.

The Yalta Game is based on Chekhov's short story *The Lady with the Dog* about a married man and a young married woman who meet on holiday in Yalta and have a brief affair that transforms their lives.

In *Afterplay*, Uncle Vanya's niece Sonya and the three sisters' brother Andrey meet by chance in a run-down Moscow café in the early 1920s and begin to uncover long hidden truths.

Both plays are at Upstairs at the Gatehouse, Highgate Village, N6. Tickets are £14 or £12 concession. *The Yalta Game* is on 6, 8 and 10 July at 7.30pm. *Afterplay* is on 7 and 9 July at 7.30pm, and 11 July at 4 pm. Find out more at www.upstairsatthegatehouse.com

Vicki is definitely an author to watch

By Daphne Chamberlain

"Definitely an author to watch": that was one of many appreciative reviews for local author Vicki Bradley's first book *Before I Say I Do*, and now her second one is out. Unlike many second books, it doesn't disappoint. *Your Life or Mine* is another absorbing psychological drama built round Detective Constable Alana Loxton.

Loxton is still working in Walworth CID, but enjoys a reunion with four women friends who worked with her on the homicide squad that caught a serial killer. One of them insists on buying more drinks for them all, to celebrate her "last bit of freedom".

Those casual words prove tragically true. One by one, all four of Loxton's friends disappear, and she knows she will be next. The significance of the book's title is revealed at the end.

Spot the clues

Vicki is herself a DC with the Met police, and a bonus of her books is the insight into police procedure. Her writing is subtle. Once you've finished the book, look through it again. I guarantee you will find clues you may not have noticed at first. That's part of the skill with which she manages quite a small cast of characters.

This is obviously a book that deals with violence, but also with compassion. Alana Loxton has always been known for being "good with murder", which is why she hated her earlier demotion from the homicide squad. But investigating what has happened to good friends has shaken her. At the end of the book she says she needs "some time away from murder".

Her fans will hope that it's not too long before we meet Alana again. Her creator has also been dealing with other



Second novel: Vicki Bradley

things, such as giving birth to a little boy earlier this year. Congratulations on both achievements, Vicki!

Your Life or Mine, by Vicki Bradley, is published by Simon Schuster. (ISBN 978-1-4711-8526-7)

Art trail at the palace

The Artists Walks 2021 Art Trail is running at Alexandra Palace until the end of September.

It's a family-friendly route around the outside of the palace and grounds showing off lots of beautiful and fascinating works by local artists along the way. All works are on show outside, going some way to helping the artists who have been unable to display their work in galleries.



On show: Amelie's art work

Academy artist

Amelie C, a student in year 10 at the Archer Academy, has had a piece of work chosen from 33,000 submissions for the Royal Academy Young Artists' Summer Show online, the second year running that her art has been selected. The exhibition will be available to view online from 13 July and some artworks will be on display at the Royal Academy itself from 13 July to 8 August. Find out more at <https://youngartists.royalacademy.org.uk/>

All Saints' Church, Durham Road, East Finchley Church of England

You are welcome to join us for:

Sunday mass at 10.00 a.m. and
Weekday masses as advertised on the website.
Face masks must be worn for the time being.

Or join our live-streamed services on our Facebook page:

<https://www.facebook.com/allsaintsef/>

The church is also open for private prayer as advertised on the website.

Prayer requests are gladly accepted.

For more information,
contact the Vicar, Fr Ian Chandler, on
020 8883 9315
Email: vicar.saintsabouting@gmail.com
or check out our website:
<http://www.allsaints-eastfinchley.org.uk>



See you in court: Stormont Squash Club is open again.

Squash players back on court

By Tony Hulse

Squash players welcomed Monday 17 May with glee and enthusiasm. This was the first time for 14 months they could go on court with multiple households and play full court singles and doubles squash.

My club, Stormont, which serves the East Finchley community, opened its doors promptly that morning, risk assessment done and safety precautions in place. We saw enthusiasts test their mettle after the long lay-off, not to mention endure a few aching muscles afterwards.

Our coaching team kicked into gear quickly, the response from juniors being particularly gratifying. However, it is clear that some players are still nervous and need convincing that

it is safe to return to the game. We are working to communicate the safety measures in place and to instil confidence in those who may be hesitating.

In addition, we are promoting squash in multiple ways, as are other clubs further afield in Hornsey and North Finchley, using the many ideas in England Squash's Bounceback campaign. In our case, we have introduced extensive and subsidised coaching for adults and juniors, with free rackets and taster sessions for newcomers.

We are also giving squash-only membership at reduced prices until the end of September.

Veterans and newbies welcome

The call is out therefore to former squash players and to newcomers to take advantage of these opportunities at Stormont in Lanchester Road, N6. Squash is a great game and a great way to get fit. It is not just for the sporty: it can be played in lots of ways by all generations. Find out more at www.stormontlsrc.com and see you on court!

I shared my wedding week with Diana

By Diana Cormack

Forty years ago on 29 July 1981 the world watched eagerly as Lady Diana Spencer climbed out of her carriage and walked up the steps of St Paul's Cathedral, desperate to see her much-discussed wedding dress. Some greeted it with delight, others with disdain. Now there is a chance to judge it again at a special exhibition in Kensington Palace.

I too was watching closely that day, but trying to learn about other things. Did she keep her engagement ring on or was her left hand bare for the wedding ring? I had good reason for this because I was getting married that week too. My ring, like Diana's, was sapphire and diamonds, though much smaller! But it was enough to convince our niece that her uncle was marrying Lady Diana, which she told all her nursery classmates.

My father joked that Ian and I should have married in St Paul's as everything was ready in there. Maybe he didn't know that we were following in the footsteps of many famous celebrities through Marylebone Registry Office? Love was in the air and, as we walked with our guests to the reception venue, drivers in Marylebone Road clapped

and cheered and sounded their horns.

I lived in Islington then and a local greetings card manufacturer sent specially designed cards to any residents getting married that week. As well as this unique souvenir we have a framed cartoon by an artist friend which was on display in Liberty's window for months and sold many copies. It depicts Prince Charles and Lady Diana forcing their way through crowds towards the cathedral.

Celebrating soon

Of course sadly they never made it to 40 years. If it wasn't for the present pandemic I doubt we'd have done much to mark our ruby wedding anniversary. However, not having seen family for so long we are planning a happy gathering... lockdown rules allowing.



The cartoon owned by Diana

Letters

Shame of homes demolition

Dear Editor,

Regarding the May article in *The Archer* I was very shocked to hear that council house planners Barnet Homes are threatening to demolish three houses on the Grange Estate in order to create more council housing in an area where the residents and home owners have a good community, using the playing area in Brownsell Road no doubt for games, sport and social occasions and their children attending local schools.

Should Barnet go ahead with this proposal it will badly affect children and adults who have made their social life in this area when most of us of any age want to experience some normality since the Covid virus invaded our lives.

There seems to be one law for councils and central London mayoralities and the recipients of those laws in which the aforesaid people do not live. How do these 'officials' square their consciences?

We've already had enough of the recent so-called temporary road development and suggestions of building flats in Underground Car Parks in our area and the ghastly building works opposite East Finchley Underground blocking out all light from the Station and no doubt from many houses in Ingram Road. Instead you should concentrate on providing disabled access, say an escalator if not a lift or are they prevented from doing this because it is a Listed Building? Please inform us of something positive so that we can remain in a convenient, pleasant, neighbourly area for the rest of our lives.

Jeanne Wray,
Address supplied.

In praise of our parks

Dear Editor,

Once we got that horrible wet May out of the way, our local parks came to life again in sunny June. It was wonderful to see families and individuals out and about in Cherry Tree Wood, enjoying all it has to offer. The tidied-up playground area and the refurbished tennis and basketball courts make the whole place look very smart. All it lacks at the moment is a refreshments hut (that's open).

I would also put in a word of praise for Victoria Park, off Long Lane in Finchley Central, and very handy for those of us living at the top end of East Finchley. This also is a good looking and well-used park. There are always people out exercising and there are plenty of facilities, including tennis courts, two playgrounds and a fully functional café.

Let's keep using these precious green spaces and look after them by picking up litter and dog doo.

Julia Cooper,
Richmond Road, N2.

Step into history

City of London guide Paul Baker is back in business with his repertoire of walks that follow the footsteps of history through Finchley and Barnet.

First on his calendar this summer is a guided walk of Monken Hadley, a Georgian village on the edge of the green belt, on Saturday 10 July. Meet outside The Spires shopping centre in High Barnet High Street at 3pm.

On Saturday 24 July, Paul will be walking the site of the Battle of Barnet, dating back to the Wars of the Roses in 1471. Meet at the junction of the Great North Road and Hadley Green Road, EN5, at 2.30pm. For fuller details, visit www.barnet-walks.co.uk or call Paul on 07506 761294.

Send your correspondence to: "Letters Page"
The Archer, PO Box 3699,
London N2 2DE or e-mail
news@the-archer.co.uk

Letters without verifiable contact addresses will not be printed. Contact details can be withheld on request at publication. We reserve the right to abridge letters for reasons of space.

STEWART DUNCAN

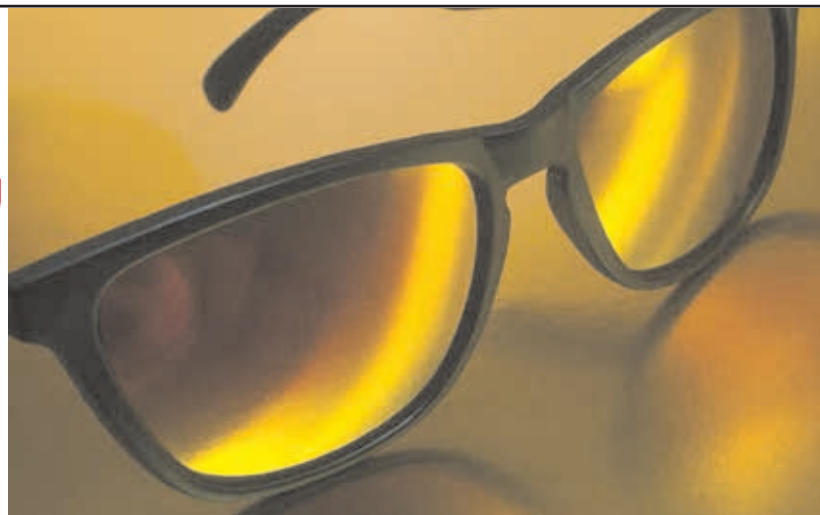
YOUR EAST FINCHLEY OPTICIANS since 1962

BUY PAIR OF
GLASSES AND GET
PRESCRIPTION
SUNGLASSES
COMPLETELY

FREE!

STANDARD CONDITIONS APPLY
FOR DETAILS ASK IN STORE OR

CALL 020 8883 2020





Market Place: what lies underneath?



Market Place, East Finchley 7 C.



Above: Dig site: The spot in Market Place where the archaeological teams will be investigating this month.

Heart of the village: A thriving Market Place around the year 1900 when it was at the centre of East Finchley life. Photo courtesy of the East Finchley History Project.

Layers of the past could be uncovered when an archaeological dig comes to Market Place in East Finchley on the weekend of 17 and 18 July.

Several test pits will be excavated close to the Market Place playground, an area once densely occupied by buildings, as part of a festival run by the Council for British Archaeology.

The digs will operate between 10.30am and 4.30pm each day, and there will be opportunities to be involved in washing and cleaning finds, identifying what is dug up and discovering more about the fascinating history of this part of East Finchley.

Roger Chapman, treasurer of the Hendon and District Archaeological Society (HADAS), said: "We would love to hear the memories of local people who knew the site and to introduce others to the extraordinarily rich local history of this area. Do drop in at some stage on the weekend."

"The 1893 Ordnance Survey map overlaid on a modern satellite photograph clearly indicates that a range of buildings used to lie under the site. The question is 'How far back was this site first developed?' We hope these test pits will give us clearer evidence to begin to answer this question."

A photograph, believed to be taken at the turn of the 20th century, indicates a post office and shops with homes above occupying part of the site.

This little pig went to market

The Market Place takes its name from a large pig market which started around the 1660s. By the end of the 18th century Finchley's pig market was the largest in Middlesex, with market days on Wednesday and Thursday.

The Walks, which abut this site, is an historic series of footways running parallel to the High Road and originally denoting the boundary between Finchley Wood/Common and the early settlement known as East End.

On 15 November 1940 the area was heavily bombed during the Blitz. Many of the houses were destroyed.



Ghosts of the past: Market Place as it is today, with the old street plan superimposed on top

COLIN SCLARE

Sales & Lettings

The Brentano Suite, Lyttelton House, 2 Lyttelton Road, London N2 0EF

We cover East Finchley, Muswell Hill, Hampstead Garden Suburb, North Finchley, Whetstone, Finchley Central, Barnet, Friern Barnet, Golders Green, Archway, Islington and parts of the City.

Letting fee: 7% (= 8.4% incl vat) Sales fee: 1.5% (= 1.8% incl vat)

But more importantly, a quality service to you!

Open 6 days a week

9.30 am - 7 pm Monday to Friday 10 am - 3 pm Saturdays

Contact us on

07891368049

020 8444 3351

www.colinsclare.co.uk

info@colinsclare.co.uk

SECUREBASE
DOMESTIC COMMERCIAL INDUSTRIAL SECURITY
Est 1988

Your Security Problems Solved!

- ▶ Intruder Alarms
- ▶ CCTV
- ▶ Access Control
- ▶ Intercom Systems
- ▶ Locks, Doors & Keys
- ▶ Safes & Grilles
- ▶ Locksmiths



020 8442 0660

Securebase Ltd
112 High Road, East Finchley, London N2 9EB

T: 020 8442 0660
F: 020 8365 2788

info@securebase.co.uk
www.securebase.co.uk