

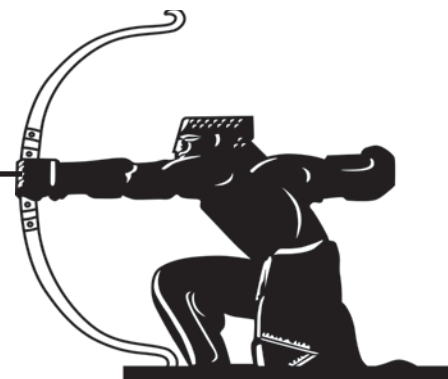


residential sales • lettings • management
020 8444 5222
www.jeremyleaf.co.uk

ISSN 1361-3952
20p
where sold

The Archer

Local News is our Aim



December 2021 No. 332

A community newspaper for East Finchley run entirely by volunteers.

Residents still in the dark over Grange plans

By Janet Maitland

Barnet Homes are promising a 'large scale consultation event' in the new year before they submit an application to build new homes on the Grange estate and nearby streets in East Finchley. *The Archer* reported in May that families living in three homes had not even been told that their properties had been earmarked for demolition.

A plan for consultation activities with families and children over the late summer did not materialise, but

a spokesperson told us they had consulted with stakeholders such as the planning authority and urban designers.

Residents are not impressed. "They haven't shown us the new plans yet, which I think is outrageous," said Rebecca Weston, chair of the Residents' Association, whose home may be demolished if the plans are not changed.

Consultation 'a sham'

The Barnet Homes spokesperson said they had met with the Resident Interest Group (RIG) set up by the engagement consultants NewmanFrancis, conducted a walkabout for residents in Red Lion Hill, next to the Grange, and "kept local councillors informed of our position".

However, local councillors Claire Farrier, Alison Moore and Arjun Mittra branded the consultation a sham. "We support new genuinely affordable homes, but assurances that this scheme would not require demolition have not been honoured and communication has been exceptionally bad," they said.

The original plans were for 64 new homes - 23 in three new blocks on the Grange and 41 on the green spaces in Brownswell Road and Tarling Road - plus about 40 more from building additional storeys on top of existing blocks on the Grange to reach the council target of 100. However, a survey has recently concluded that building extra storeys is not structurally feasible.

Although they were not able to confirm if the plan to demolish three houses and build new homes over Brownswell Road and Tarling Road green spaces was still on the table, Barnet Homes stressed that they had listened to residents and "looked to improve the quality of the amenity areas that will be provided".

Residents' charter

The Resident Interest Group is drawing up a residents' charter in advance of the building works. "This is really important, if disruption and nuisance akin to that encountered in [the recent building work] in Prospect Ring in East Finchley is to be avoided," said local resident Sachin Patel, secretary of the Residents Association and a member of RIG.



Festive light on a winter's night

The statue of Archie stands out on high and the lights of East Finchley station seem to take on a heavenly glow in this wonderful image created by our photo editor Mike Coles for *The Archer* Christmas card this year. We send our heartfelt thanks and season's greetings to all our readers, advertisers and deliverers who have supported us and kept the newspaper running over the last 12 months. And as we approach our 29th birthday in January, we wish everyone a very happy and prosperous 2022.

Evening robbery at food store

By Janet Maitland

A group of four men robbed N2 Food Centre on the High Road while it was still open on Wednesday 17 November. "It's unbelievable, it was 8pm not the middle of the night," said manager Mahmut Kelec.

One of the men shoved the young assistant out of the way then grabbed him and held his arms down while the others snatched cigarettes, alcohol and money from the till. CCTV recorded the whole incident. Although the men pulled their hoodies down, they kept pushing them back and revealing their faces.

This was the third raid on an independent grocery shop in East Finchley in just four months. King Street Food and Wine Shop was broken into on 20 July despite having locked metal shutters. A couple of weeks later, Ella Food Centre on the High Road was robbed after thieves kicked the door in. Both robberies happened at 4am while the stores were closed.

Police enquiries are ongoing. Anyone with information is asked to call 101 or tweet @MetCC quoting CAD7095/17Nov. To remain anonymous contact Crimestoppers on 0800 555 111. You can find current police security advice at www.met.police.uk

Find your new home today...

Successful independent estate agent, established since 1992
Residential and commercial, sales, lettings and management specialists
Our friendly and helpful staff provide a professional and genuine service
Our office is situated 100 yards from East Finchley Station



Estate Agents Valuations Sales Lettings
Overseas Properties Management Services



40 High Road, East Finchley
London N2 9PJ

www.primelocations.co.uk

enquiries@primelocations.co.uk

020 8883 9090



EVERYTHING ELECTRICAL WOULD LIKE TO WISH EAST FINCHLEY
A MERRY CHRISTMAS AND A PROSPEROUS NEW YEAR!
Lighting the way & Making connections since 1995
38 High Road, London N2 9PJ
0208 444 7994

CELEBRATING
250
YEARS

eastfinchley@prickettandellis.com
www.prickettandellis.com

SALES & LETTINGS AGENTS | SURVEYORS | VALUERS | PROPERTY MANAGEMENT

PRICKETT
& ELLIS
ESTD 1767

East Finchley Office
82 High Road, N2 9PN
020 8883 0033

• Visit us online at www.the-archer.co.uk or Facebook/Twitter/Instagram: @TheArcherN2 •



The Archer

PO Box 3699, London N2 2DE

www.the-archer.co.uk Email: news@the-archer.co.uk

[f](https://www.facebook.com/TheArcherN2) [@TheArcherN2](https://www.instagram.com/TheArcherN2)

Voicemail (messages only) 0800 612 0748 for editorial and general enquiries or 0800 612 4027 for Advertising enquiries only

Published by	Editorial Team	Finance & Advertising
East Finchley Newspapers	Diana Cormack	John Dearing
Copy Editor	Sub Editors	Distribution
John Lawrence	Ann Bronkhorst	Toni Morgan
Production Editor	Lucy Moorman	Jane & David Marsh
Alison Roberts		
Picture Editor		Printed By
Mike Coles		Sharman & Co Ltd

Thank you to The Bald Faced Stag and Cup of Joy for providing us with a meeting place.

The Archer team wishes to thank all the generous people who give up their spare time, in all weather, to deliver the paper for us.

If you have a story for us, please contact us at the above address. Comments to The Archer may be published unless clearly marked 'Not for publication' within the text.

Copy deadlines – **January:** 10 December; **February:** 14 January; **March:** 11 February

USEFUL TELEPHONE NUMBERS

Councils

Barnet Council	020 8359 2000
Recycling & refuse	020 8359 4600
Benefits	0800 882200
Haringey Council	020 8489 0000
Recycling & refuse	020 88857700
Benefits	020 8489 2800

Leisure

Alexandra Palace	020 8365 2121
East Finchley Library	020 8359 3815
Everyman, Muswell Hill	0872 436 9060
Garden Suburb Library	020 8458 3301
Muswell Hill Library	020 8489 8773
Phoenix Cinema	020 8444 6789
Tarling Rd Community Ctr	02070186560
Vue, North Finchley	0345 3084620

Transport

National Rail	0845 7484950
City Airport	020 7646 0088
Heathrow Airport	0844 3351801
National Express	0871 781 8181
TfL	0343 222 1234
Thameslink	0345 026 4700

Help & Advice

Childline	0800 1111
Citizens Advice Barnet	0300 4568365
Cruse Bereavement Care	0808 8081677
EF Advice Service	0300 4568365
Lone Parent Centre	020 3828 4834
Missing Persons Helpline	116 000
National Debt Line	0808 156 7718
NSPCC	0808 8005000
Rape Crisis helpline	0808 802 9999
Refuge Crisis Helpline	0808 2000 247
Relate Helpline	0300 100 1234
RSPCA	0300 1234 999
Samaritans	116 123
SENDIASS Barnet	020 8359 7637
SENDIASS Haringey	020 3667 5233

Health Advice

AIDSline	020 8363 2141
Alcoholics Anonymous	0845 7697555
Barnet MENCAP	020 8203 6688
Cancer Support	020 8202 2211
Carers' Line	0808 808 7777
Drinkline	0800 917 8282
Drugs Helpline	0800 776600

Health Info Service	0800 665544
MIND	020 8343 5700
National Blood Centre	0845 7711 7711

Crime

Emergency	999
Police non-emergency	101
CrimeStoppers	0800 555111
Victim Support	0845 303 0900

Hospitals

NHS	111
Barnet General	08451 114000
Edgware General	020 8952 2381
Finchley Memorial	020 8349 7500
Oak Lane Clinic	020 8346 9343
Royal Free	020 7794 0500
Whittington	020 7272 3070

OAPs' Advice

Age UK Barnet	020 8203 5040
Independent Age	0800 319 6789
Age UK	0800 169 2081

Mobile library gets back on the road

By Daphne Chamberlain

Barnet's Mobile Library service is back on the road, with some new stops added. Barnet Council says that the mobile service is a "vital resource for areas of the borough that are less well covered by a fixed library", and adding more sites is "an ongoing and proactive" process. The timetable will be updated as fresh sites become available.

The stock is for both adults and children, and includes large print and audiobooks and DVDs. You can make reservations, Select and Collect, and return loans from any other Barnet library.

The only service point in East Finchley is at Stokes Court, Diploma Avenue, where it stops for half an hour (midday to 12.30pm) once a month. For monthly visits, users are asked to contact the Mobile Library in advance, to confirm the date. This can be done by calling 020 8359 3901 or by emailing library@barnet.gov.uk.

The Barnet Council website www.barnet.gov.uk includes

more information about library services, including details of procedure in libraries during self-service periods.

A question of sport

If you are a sports fan aged over 55 you might be interested in a recently launched online group.

At 6pm on Mondays you can join in a free convivial fun discussion about your sporting memories. To register email lindsey.bennister@ageukbarnet.org.uk or call 07874 731566.

Switch-on for festive lights

By David Melsome

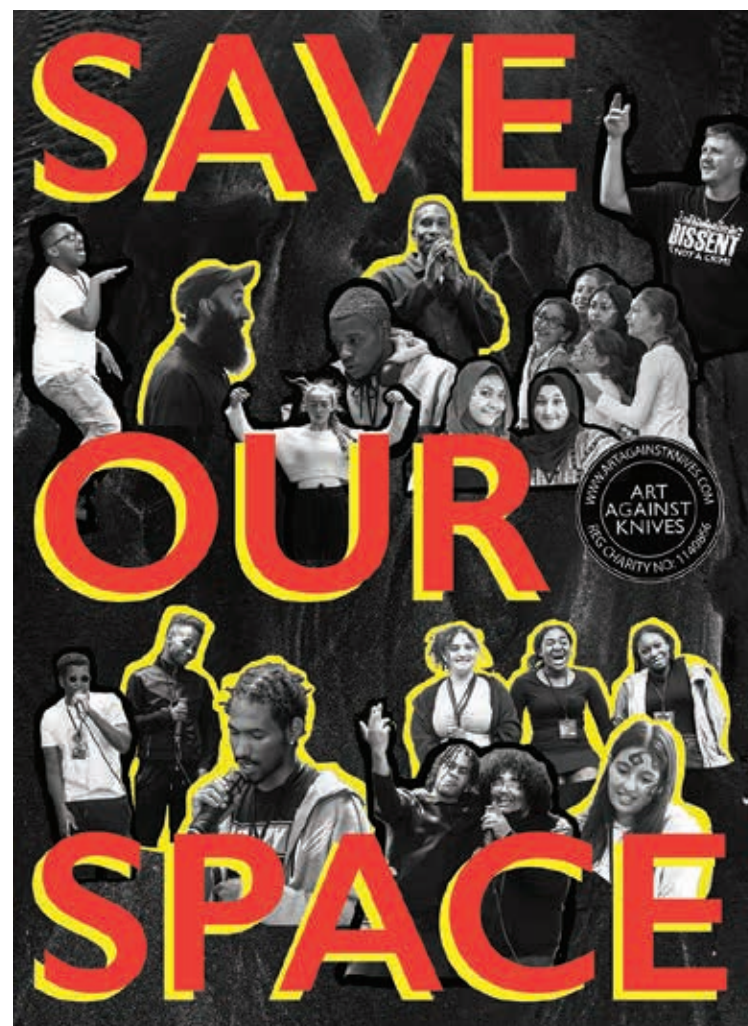
After missing out thanks to the isolation rules last year, the East Finchley community will once again be able to come together for two festive lighting ceremonies this month.

The Christmas tree outside Budgens in the High Road will be lit up on Saturday 4 December at 5pm. Everyone is welcome to come along to enjoy seasonal music and carols from The London Metropolitan Brass Band, Brookland School choir and Fixation Academy, along with free mulled wine and mince pies from Budgens.

The next day, Sunday 5 December at 4pm, Chabad of Finchley will light up a public menorah on the same corner outside Budgens on the final night of the eight-day Hanukkah holiday. The ceremony will feature music, refreshments, gifts for children and festive fun.

Appeal to keep youth centre open

Award-winning charity Art Against Knives, which works to prevent youth violence through creative projects, is marking its 10th birthday by launching an urgent crowd-funding appeal to safeguard its north London youth space.



SOS: Art Against Knives has issued this poster to accompany their crowdfunding campaign

The location has a music and podcast studio, along with a nail and hair bar, where disadvantaged young people can meet to socialise and learn new skills.

Fundraising has fallen away badly during the pandemic and the charity needs £145,000 to keep the space open for five days a week during 2022. Youth services in London have been in decline for a decade with 750 youth centres closing since 2011.

"In its decade as a charity, it's never been harder for Art Against Knives to secure funding for their vital work. The charity is at a crisis point and risks not being able to respond to the demand for their support from young people," said the charity team.

Their crowdfunder can be found at www.spacehive.com/artagainstknives and will be live until March 2022. All donations are very welcome.

PLANNING APPLICATIONS

Barnet Council

12 Brendon Grove, N2

Single-storey rear extension; depth 4m, eaves height 2.65m, maximum height 3.7m.

66 Brim Hill, N2

Single-storey rear extension. Roof extension, involving side and rear dormer windows. Alterations to windows and doors.

13 Chandos Road, N2

Single-storey rear extension; depth 6m, eaves height 3m, maximum height 3.5m.

33 Fairlawn Avenue, N2

Single-storey rear extension.

11 Elm Gardens, N2

Single-storey rear extension, following demolition of conservatory. Roof extension, involving rear dormer window and two

front roof lights.

34 Gurney Drive, N2

Single-storey rear extension. Alterations to paths and terrace steps. New gate and boarded fence. External soil and vent pipes to side.

10 Hertford Road, N2

Solar panels.

42 High Road, N2

Conversion of first-floor flat to two self-contained flats. New front bay window, following removal of dormer window. First-floor rear extension and new first-floor balcony. New access door. Single-storey rear extension, following demolition of existing rear extension, to facilitate one studio flat.

238 High Road, N2

Change of use from vacant office

to dwelling-house.

391 Long Lane, N2

Roof extension, involving L-shaped rear dormer window and two front roof lights.

70A Manor Park Road, N2

Rear outbuilding.

7 Sedgemere Avenue, N2

Replacement of ground-floor windows.

4 Stanley Road, N2

Rear outbuilding, following demolition of shed.

Haringey Council

Mansfield Heights, Great North Road, N2

Details attached to conditions of planning permission for roof extension over detached north and south blocks, to provide 11 new homes.



ECO-FRIENDLY EAST FINCHLEY + ECO-FRIENDLY EAST FINCHLEY

Fishmonger is green around the gills... in a good way

By John Lawrence

Continuing our reports on eco-friendly initiatives in East Finchley, fishmonger Peter Barnett tells us about the easy wins and some of the stumbling blocks for a small business like his.

Peter Barnett has been running A Scott & Sons Fishmongers in the High Road, N2, with his assistant Paul Jones, for more than 10 years. Over the last two years, he's put a lot of effort into greenifying the business wherever he can. He has switched to using carrier bags that are 100% degradable and already wraps the vast majority of the fish he sells in paper. At the same time, he is recycling about 30% of the polystyrene boxes that his fish arrives in and is giving away other plastic containers for customers to re-use as food boxes. His shop was recently rewired and now has only LED lighting throughout, which is less energy intensive. The latest van that he uses to get to and from Billingsgate fish market in the early hours is an eco-diesel model, which is frugal on fuel and

relatively clean on emissions.

Careful choice of van

Peter says his choice of van is an example of where small businesses need to do their research to find the best option for their costs and for the environment. "Some people might assume an electric van is the right thing to buy but they are currently very expensive," he said. "Besides, their batteries rely on elements that come from destructive mining and are very toxic to dispose of at the end of their lives. "If I keep my eco-diesel for a long time and maintain it properly, it will have a far lower carbon footprint than buying a new electric car every few years. I was given a scrappage incentive from Transport for London on my old diesel and the new model doesn't run up any charges inside the ULEZ charging zone."

Suppliers must change too

Peter believes there are plenty of easy ways for traders to make their premises more eco-friendly, including the LED lighting and the degradable bags that he uses, but says there are still limits on the progress they can make. "I have a choice to wrap my fish in paper," he says, "but for grocers, for example, so much produce arrives already wrapped in plastic. For them it's harder to bring about changes. The pressure really has to be put further up the chain to get the suppliers to change their ways." *What are you doing to make your home or business more eco-friendly? Get in touch with us by emailing news@the-archer.co.uk or leave a message for free at 0800 612 0748.*



Biodegradable: Peter Barnett uses paper and degradable plastic bags to wrap the seafood he sells. Photo Mike Coles

Recycling project seeks its first drop-off locations

By David Melsome

Last month on our front page we reported on the launch of Bin There, Donate That, the East Finchley project that aims to find places other than the bin for all unwanted or unsellable items in our homes.

The plan is for dozens of local shops and businesses to become places for residents to donate items that can then be upcycled, re-used and recycled.

Organisers Emma Frampton and Isabella Barbara say they have been delighted to receive supportive messages, suggestions of ideas and offers of help via the bintheredonate@gmail.com email as well as via comments on the East Finchley Community and Sustainability Facebook groups (Facebook.com/groups/EastFinchleySustainability and Facebook.com/groups/EastFinchley).

Their inaugural project meeting was held on Tuesday 9 November, with those who attended offering to volunteer, and they hope to have the first collection boxes in shops very soon, with information on locations posted on their website at bintheredonatethat.wixsite.com/reuse.

More volunteers needed

Emma said: "This is not a project which goes from little to fully functioning in one go. Our next steps are to have a few fully functioning drop-off and collection points set up. "For this to work, we really need shops to offer their premises as



Bin there: Emma Frampton and Isabella Barbara are appealing for donating points. Photo Mike Coles

potential donation spots and for volunteers to come on board to help with research, collections and leafleting."

Emma and Isabella are also hoping they can find a volunteer to give advice on their website and running social media.

The project's next meeting will be in the week beginning Monday 6 December. Email bintheredonatethat@gmail.com for final details.

Greene Driving School

East Finchley N2

From **£20.00** per hour
for 2 hr lesson

Safe driving for life

Small manual Low Co2 Car
Eco & Low Maintenance Tuition
Pass Plus 4 cheaper Insurance.

Call John M.I.M.I

0773 851 4406 greenedriving.co.uk

Christmas wrapping

Have you bought meat from the butcher in Budgens in the High Road recently and did you notice it came in wax lined paper?

Huge congratulations Budgens, for giving East Finchley the opportunity to be able to buy meat with no plastic packaging whatsoever," said Ann Inglis, of No2PlasticsN2. "Do take advantage."

The No2PlasticsN2 group also welcomes anyone getting in touch with concerns or reasons to celebrate regarding plastic usage in East Finchley. Find out more and get in touch via www.no2plasticsn2.com

Eco United

Emma Frampton, Peter Barnett and Maxine Klein of No2PlasticsN2 will be amongst the speakers at N2United's upcoming sustainability-themed open meeting on 13th January 2022. See page 11.

A Local Handyman

available for general household & garden maintenance.

No Job Too Small

Free Estimates

Call John on: 0789 010 3831

or: 0208 883 5325



Dissolving the blocks to self healing

Kathryn Scorza

Registered Hypnotherapist
Soul Therapist
and Spiritual Healer

tel: 07703 404 839

email: kathryn@kathrynskorza.co.uk
www.kathrynskorza.co.uk

HYPNOTHERAPY SOUL THERAPY SPIRITUAL HEALING

Hypnotherapy can help with managing many issues, including stress, anxiety, pain, fears, phobias and compulsions



CURTAINS • BLINDS • UPHOLSTERY TAILORING • DRY CLEANING

Need new curtains? Book your free consultation now!

Step 1:

Pick your fabric

Step 2:

Choose your style

Step 3:

Pristine measure your window

Step 4:

Finalise your order

07415 799900

pristine-drycleaning.com



Men jailed over Ally Pally cash machines smash and grab

By Janet Maitland

Six men have been sentenced for stealing £46,590 from two cash machines inside Alexandra Palace in the early hours of 19 August 2019.

The men used old-fashioned brute force, three of them using bolt cutters to force their way through the main entrance. Once inside, they severed the connections on the ATMs and prised them off the walls with power tools.

One of the cash machines was lugged outside and into the back of a waiting van driven to the spot by a fourth man. A fifth man in another vehicle acted as look-out.

Just before dawn, the same five men came back to the building to collect the other cash machine. They then drove to a secluded yard, found by a sixth man, where they smashed the machines to pieces.

Once emptied of cash, the

ATMs were dumped, one in Loughton and the other in Abridge, both in Essex. Both were spotted and reported by members of the public.

The vehicles were abandoned in Chingford where they were discovered by police on a routine patrol and subsequently linked to the thieves.

All six men were arrested and charged a few months later. They all pleaded guilty and were sentenced at Wood Green Court on 29 October 2021. Two were sent to prison for four years and two months, and one for three years and nine months. The others were given suspended 18-month custodial sentences and between 80 and 150 hours of unpaid work each.



Team effort: left to right, Sara Rojas, Natalie Blanks, Stephen Steppens and Muswell Hill Club owner Hussein Lalani. Photo Mike Coles

Stephen's helping hand as he waits for a guide dog

By Lynn Winton

Blind since birth, Stephen Steppens had been refused membership at gyms which didn't want the responsibility of a blind man and his guide dog on their premises. However he has been a member of Muswell Hill Club, formerly The Manor Gym, since 2017.

An enduring friendship has grown between Stephen, who lives alone, and the staff, who walked his black Labrador guide dog Owen and shopped for him during lockdown. He knows he can drop in anytime and they will help him with his post and anything else that requires a pair of eyes.

Dangerous streets

Owen was 10 when he was retired from active service in September 2020, and Stephen is "counting down the days" until he is given a new guide dog. Whilst he is determined to venture out alone and keep active, he has spent over a year desperately missing the support and safety a guide dog provides.

Pavements are full of hazards like parked bikes, scooters and electric charger points; streets are full of "silent" electric vehicles that a guide dog can help him navigate much more safely. At the moment there is a waiting list of 40 visually impaired people in London waiting for a guide dog, and there is no indication when it will be Stephen's turn. His predicament has

inspired the gym to nominate Guide Dogs UK as their charity. Aware of the dire situation and how much Stephen's life is impacted without a guide dog, gym owner Hussein Lalani bought a magnificent Rituals beauty hamper to raffle in November.

Helping Guide Dogs UK
"Hussein and the gym staff have always been amazingly

helpful and supportive to me," said Stephen. "Now they want to help support Guide Dogs UK in any way then can."

So if you are walking past the gym please give your support by popping in to reception and putting something in the Guide Dogs UK collection tin. If you would like to help their efforts you can call Natalie at the gym on 020 8883 0500.

SAFER NEIGHBOURHOODS

LOCAL POLICE, LOCAL KNOWLEDGE

Jan Lovell, of the East Finchley Safer Neighbourhood Team, updates us on the latest crime news. Jan and the team can be contacted by email at: EastFinchley.snt@met.police.uk, or by phone on 020 7161 9014. Follow the team on Twitter @MPSEastFinchley.

Covid scam

I personally received a very convincing email and link, seemingly from the NHS, regarding a Covid travel pass. It made sense as I had now had a booster vaccine and had had a Covid pass before so I could travel abroad last month.

All seemed good and the screen and questions asked matched my previous experience... until I was asked for my bank and card details on the grounds that should vaccination incur costs in the future I would have an account. That's when I knew it was a scam!

With the suggestion that some activities and venues as well as travel may only be allowed by those with a Covid pass, many of us will want to have such a facility.

So remember that a Covid pass is available through the NHS app (not to be confused with the NHS Covid-19 alert app) which can be used for many other NHS functions, and never asks for any bank details.

How to report crime

Report crime by calling 101 or in an emergency call 999. You can also report crime online on the Met Police website: www.met.police.uk

Nicky Sharp Osteopathy Clinic

Cranial and Structural Osteopathy and Acupuncture
All Major Insurers Accepted

For consultations and appointments:

Telephone: 020 8815 9433

260 East End Road www.nickysharposteopathy.co.uk
London N2 8AU e-mail: info@nickysharposteopathy.co.uk

Emergency Denture Repair and New Dentures



103a Golders Green Rd NW11 8EN
020 87318611
<http://www.mydenturedirect.co.uk>

CARPENTRY & JOINERY Est 1962

Bespoke Built in Furniture, Wardrobes, Bookcases



Email: fandcshawltd@yahoo.com

Website: www.fandcshawltd.co.uk

Tel: 07999858816



Japanese Acupuncture Clinic Finchley

www.japaneseacupunctureclinicfinchley.com
1 Bedford Mews, East Finchley N2 9DF

Marian Fixler
07966 411582

Fiona Hurlock
07795 203107

Julian Ormerod
07947 409809

Acupuncture & Moxibustion Chiropractic & Yoga

Holy Trinity Parish Church

67 Church Lane, N2 0TH

We are a community of where faith is shared, hope is nourished, and love comforts.

You are welcome to join us for:

Holy Communion: Sundays @ 10.00 am

Carol Service on 12th December @ 5:00 pm

Christmas Midnight Mass on 24th December @ 11:30 pm

Christmas Day Family Service on 25th December @ 10:00 am

For more information please contact us via our website:

www.holytrinityeastfinchley.org.uk

Email: marius.mirt@htef.org.uk

Tel: 020 3565 4430



Second screen is part of 2022 plans at Phoenix

By David Gritten

A second screen is part of the plans for 2022 being drawn up by the team at the Phoenix Cinema as they attempt to pull the venue out of a 21-month period when they've had to close their doors or settle for limited audiences. *The Archer* first reported two years ago that a second screen was being considered but of course all plans were put on hold by the pandemic.

Now Phoenix executive director Oliver Meek says they will refurbish the bar and call in a structural engineer to investigate the possibility of rearranging the café space to install a 20-seater second screen.

"That would be a turning point," Oliver said. "We need more programming options. It would bring a lot more diversity to our programmes and we could do many more special events."



Big plans: Oliver Meek

"There's been a lack of investment in our infrastructure behind the scenes and we haven't always had the resources to fix it. But through various bits of funding and having more time over lockdown, we've now started to do so."

Important year

However that works out, it's obvious 2022 will be an important year for the Phoenix. The signs were clear back in October when the new James Bond film *No Time To Die* drew substantial audiences. "Since then, we've seen numbers rising," says Oliver. "Slowly, but they are rising."

It's likely they'll continue to rise, with the current end-of-year release of crowd-pleasers like *The House of Gucci* and

the remake of Stephen Sondheim's musical *West Side Story*, directed by Steven Spielberg. And there's a good chance more people will have returned to cinema-going in December. As Oliver points out: "When everyone's had their third shots (jabs), that will help."

A better place

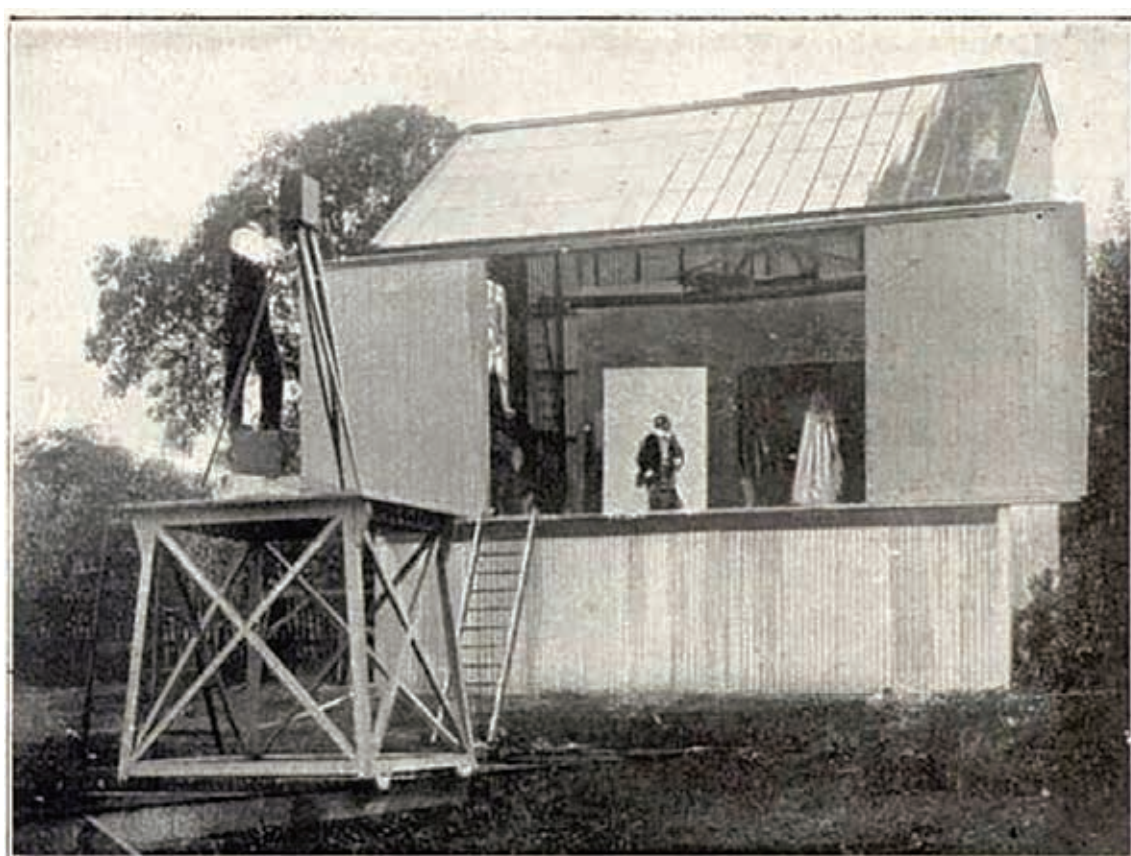
His upbeat approach seems to be shared throughout the Phoenix. Alison Gold, chair of trustees, admits: "We do feel cautiously optimistic. It's been tricky for cinemas because through the summer, when we were open, there weren't big films out there. But that's given us breathing space to make reforms and changes to improve



Upbeat: Alison Gold

the cinema and make it a better place for people to come.

"I think there's a real demand to have a good local cinema," she adds. "I see people have already booked for the operas we're showing next May and June." The Metropolitan Opera, the Bolshoi Ballet and a production of *Hamlet* have all been scheduled. "It's wonderful to have that wide range on offer and to see it's what local people want and they're buying tickets for it. It's what the Phoenix is for, to give people choices."



Open air: A view of Robert Paul's animatograph works on Newton Avenue, off Sydney Road in Muswell Hill around 1901, with the cameraman filming actors on a purpose built stage. Photo courtesy MHFGA Newsletter.

World's first film studio... in leafy Muswell Hill

By Daphne Chamberlain

Did you know that the world's first film studio was in Muswell Hill? The film-maker was an instrument-maker named Robert Paul and 2019 was the 150th anniversary of his birth, celebrated with exhibitions in London and Cardiff.

But there is still a lot of his work to discover. Many of us had our eyes opened recently by Ian Christie in one of Muswell Hill and Fortis Green Association's excellent meetings on Zoom.

Born in Holloway and trained in electrical engineering at Finsbury Technical College, Paul was making instruments in Hatton Garden when two Greek American entrepreneurs walked into his workshop. They asked him to replicate a kineoscope designed by Edison. As the patent didn't extend beyond

the US, Paul found himself with more than a magic lantern.

Starting at the Alhambra in Leicester Square, in March 1896, he was soon showing filmed 'slices of life', shot in places like Blackfriars Bridge and Hyde Park. He was showing projected films at about the same time as the Lumiere brothers in France.

In 1898, he moved to Sydney Road, in the northern reaches of Muswell Hill, where he set up his studio. In his film, *The Motorist*, we can see him driving his own car down Colney Hatch Lane. Ian Christie showed some of these clips in the meeting, telling us that his ambition was to inspire people to hunt down all the still-undiscovered work.

Unfortunately, there is no

trace remaining of the Sydney Road studio. It has all been built over.

East Finchley too

The Zoom was a fascinating glimpse into early films, and reminded me that East Finchley has its own claim to fame with a studio belonging to another of Britain's most prolific silent film makers. From 1911 to 1916, it operated in Newstead House, just north of where Sylvester Road is today. You can read more in *The Archer* online archives for July 2006, page 7. Robert Paul and the Origins of British Cinema by film historian Professor Ian Christie, was published in 2019 by Chicago University Press. ISBN-10 0226105628 / 13 978 0226105625.

Christmas car boot

The final Muswell Hill Indoor Car Boot Sale before Christmas takes place on Saturday 18 December from 10am to 1pm at Hornsey Parish Church Hall, at the foot of Muswell Hill on the corner of Cranley Gardens and Park Rd, N10 3AH. Admission is 50p and refreshments are available. For more information contact 020 8368 8180.

ACCOUNTANTS FOR SMALL BUSINESS

At TaxAssist Accountants we specialise in supporting small businesses.



- Business Accounts & Taxation
- Self Assessment Tax Returns
- Bookkeeping & VAT
- Payroll CIS & RTI
- Company Formations
- Initial consultation free with no obligation

020 8883 5258
www.taxassist.co.uk/eastfinchley

East Finchley Baptist Church

Please join us for our Christmas services
Sunday 19 December

Christmas Family Service 10.30 am

Carols by Candlelight 6.00 pm

Saturday 25 December

Christmas Morning Service 10.30 am

For more information please contact the Church Office

Email: office@eastfinchleybc.org.uk

www.eastfinchleybc.org.uk

ENVIRO
FURNITURE



COMPLETE BESPOKE
FURNITURE SOLUTIONS

DESIGN, MANUFACTURE & FIT

Office: London, N2
Manufacturing Facility:
Hitchin, Hertfordshire

www.enviro-furniture.co.uk



020 8068 6664

info@enviro-furniture.co.uk



Let a hundred thousand flowers bloom in East Finchley

By Roger Chapman, of East Finchley Community Trust
A new project to let a hundred thousand more flowers bloom in East Finchley is being launched for 2022 and we would love you to be part of it.

The East Finchley Community Trust is behind the Pollinator project, which aims to create pollinator trails in East Finchley based on a series of nectar cafes, and to raise awareness about the importance of insect pollinators.

Why are we doing it?

Our bees, butterflies and hoverflies have suffered badly over the last 50 years, due to changes in land use because of modern farming methods, urban spread and new transport links. Over 97% of all flower-rich grasslands (an area the size of Wales) have been lost in England since the 1930s, reducing pollen and nectar sources and leading to a serious decline in the wildlife depending on wildflower-rich habitat.

Residents are planting up the tree pits. Station Bank, on the way to the Station car park, has its tenth anniversary as a community garden in 2022.

Other initiatives are happening along The Walks, the High Road, along the county roads, in the Grange Estate, at Barnwood off Oak Lane, and at the community garden that started only this year at the Archer Academy.

How can we help?

You can set up a nectar cafe by planting flowers for pollinating insects like bees and butterflies. Choose a sheltered sunny spot and plant in groups or drifts so colours and scents are easy to detect.

Prolong the flowering season by selecting a range of



Chair of the Trust Kate Brown said: "There are many different types of pollinators. People often only mention bees but there are hoverflies and many other beneficial insects. A third of the crops we eat, including fruit, vegetables, chocolate and coffee, rely on pollination. Don't underestimate how much urban environments can benefit pollinators. And the results are beautiful as well."

What can we do?

It's already happening in East Finchley. Every flower planted in back gardens and hanging baskets, on balconies and window sills, in tree pits on streets, in community gardens, in our parks and open spaces, will help support pollinators. More flower planters are appearing all the time. We aim to bring such small-scale gardeners together and support more who would like to get involved.

What is happening?

A new wildflower meadow is being planted in Cherry Tree Wood this winter. The butterfly bed at the High Road entrance is being improved all the time. Outside that entrance local

plants that flower from early spring to late autumn and choose flowers with a simple (often flat) structure, like old cottage varieties, as they are the easiest for insects to feed from.

Remember to provide a night-time feast for moths by planting some night-scented flowers. Add herbs to the mix as they are highly attractive to insects, or design a dedicated herb garden

What next?

In late January 2022 we'll hold an online Zoom meeting for people interested in getting involved, with details in the January Archer and on local social media. Join in the discussion and let's talk together about what we can do.

In late March 2022 there'll be a seed swap in Cherry Tree Wood. Come along, swap some seeds, and find out more about how you can help. Talk about the idea with friends. Think what you can plant next year, on a windowsill, in your garden, in the tree pit outside your house or in a community garden.

Keep in touch and email the Trust on eastfinchleytrust@gmail.com for more details.



Tooled up: The volunteer gardeners clear the shrubbery beds outside Budgens. Photo Mike Coles.

Hit squad gives weeds the heave-ho

By Janet Maitland

Have you ever felt so dispirited by the bindweed and brambles smothering the rose bushes in the Barnet Council flower beds outside Budgens in the High Road that you just longed to get stuck in with your secateurs?

A group of local gardeners did just that, spending Saturday morning on 20 November pruning shrubs and clearing leaves and litter, spurred on by thanks and free hot drinks from appreciative passers-by.

Two of the volunteers dragged their green bins all the way from home and back again, full of twigs and branches. "I really enjoyed it and had a great

time," said one of the gardeners. "It was huge fun," said another.

The date was planned to make sure the flower beds looked their best in time for the Saturday 5 December lighting up of the Christmas tree donated by Paul Gardner, manager of Budgens. The gardeners say they plan to return to keep the weeds away.

Carol singers on the move around N2

Get in the Christmas spirit by supporting a group of wandering carol singers who will be spreading joy and good tidings at various locations on Thursday 9 December.

The troupe will be singing all the festive favourites, starting outside the Old White Lion pub near the tube station at 6pm, then moving on to entertain commuters at the station itself before finishing outside Budgens further up the High Road.

All money collected on the night will support Finchley Foodbank. The singers themselves will include food bank volunteers and parishioners of St Mary's RC Church in East Finchley.

Calling all book lovers

A new book club meets on the first Tuesday of the month from 3.30pm to 4.30pm at the Ann Owens Centre in Oak Lane, N2.

"Book clubs are a super way to meet fellow readers around a mug of tea and a good book," says Age UK Barnet volunteer Kato who is running the group. "They offer a comfortable social space where people who love reading can meet to share their ideas and feelings about a book without judgement."

It's also a great opportunity

to read books that you might not normally choose, says Kato. "It's a chance to appreciate different perspectives and points of view – and perhaps even make new friends..."

To register your interest in joining the group, call Helen Nicolaou on 0738 446 6840 or email helen.nicolaou@ageuk-barnet.org.uk.



STEWART DUNCAN OPTICIANS

126 HIGH ROAD, EAST FINCHLEY, LONDON, N2 9ED 020 8883 2020

TREAT YOURSELF THIS CHRISTMAS WITH NEW GLASSES.

20% OFF SPECTACLES WITH THIS COUPON.

AVAILABLE UNTIL 24TH DECEMBER 2021. ONE PER CUSTOMER. NOT VALID WITH ANY OTHER OFFER. MUST BE PRESENTED WHEN PLACING THE ORDER. PHOTOCOPIES ACCEPTED.

WE WOULD LIKE TO WISH YOU
MERRY CHRISTMAS AND A VERY HAPPY NEW YEAR!!!

OPENING TIMES DURING FESTIVE PERIOD:

WE CLOSE ON FRIDAY 24TH DECEMBER AT 2.00 PM AND REOPEN ON TUESDAY 4TH JANUARY AT 9.00 AM.



How the wood is turning over many new leaves

By Debbie Linton, of the Friends of Cherry Tree Wood

There has been wonderful progress in the wood over the last couple of years. The dilapidated old pavilion building is now a space reclaimed by nature and the kiosk is up and running again, offering a welcome array of refreshments.

A new gardening group has been busy planting flower beds. A small orchard and meadow has also been established. Regular litter picks have occurred, with help from Duke of Edinburgh volunteers, to keep the whole wood tidy.

A grant for £20k has also helped towards, for example, a new noticeboard and a new path beside the playground. New bins have been installed. The tennis and basketball courts have been resurfaced by Barnet Council. A successful campaign has kept the wood locked overnight and a new Barnet-wide Green Space Network has also been established

Enhancing and maintaining the green space

As reported in *The Archer* in October, proposals have been submitted to extend the wood at the High Road entrance. The idea of enhancing pockets of green space in urban areas is growing in momentum.

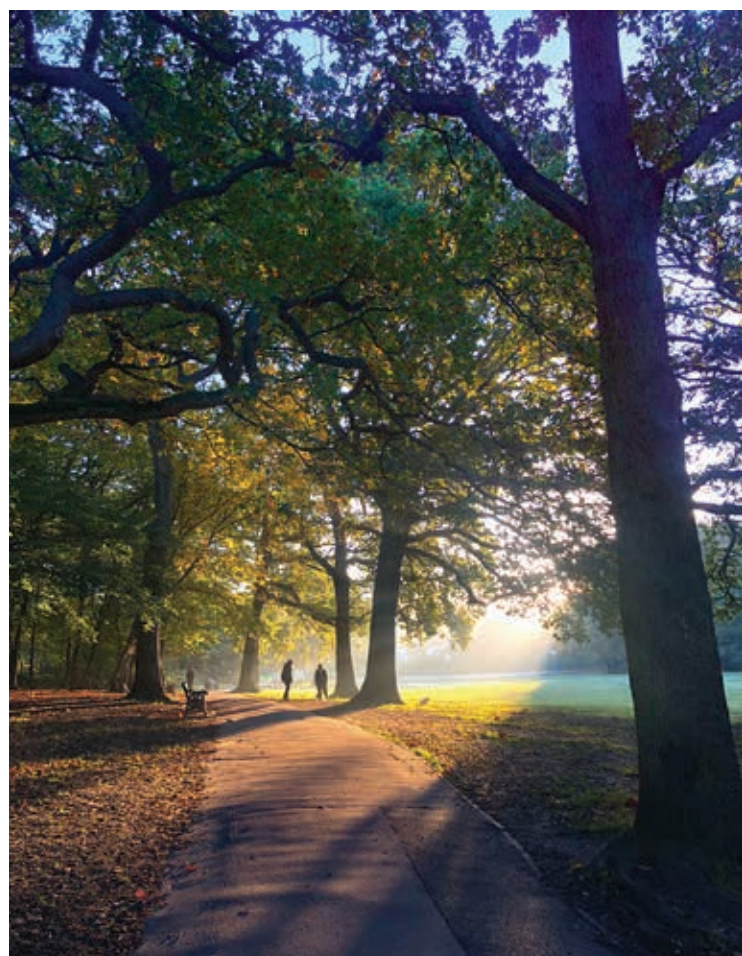
The Friends of Cherry Tree Wood are also keen that any new building does not physically impact the existing wood. As reported last month, a current objection is to a proposed six-storey building overlooking the wood on its western side. The wood has offered a tranquil and small green oasis for an extremely long time. With some careful consideration and

discussions it could continue to do so.

The year ahead and the January AGM

There are lots of plans for the wood in the year ahead. These include installing a drinking water fountain; a nature trail; and some new playground equipment. Family activities are planned, such as making bee and insect hotels and bird and bat boxes.

The Friends of Cherry Tree Wood group is always pleased to hear from people and our annual meeting is open to everyone. It is on Zoom at 7pm on Tuesday 11 January 2022. For further details email friendsofcherrytreewood@gmail.com



New day: Planting and regeneration projects are transforming Cherry Tree Wood. Photo Lois Lawrence.



Social climber: A rat, circled, in a tree near the High Road entrance to the wood. Photo Josh King.

Tales of squirrels and rats

By Daphne Chamberlain

How did you identify the rats in the trees of Cherry Tree Wood in the photos we printed in October? What did you look for first? I bet you were like me, and went for the tails.

As someone who once enjoyed the company of a friend's pet rat, I've always thought that squirrels have an unfair advantage in their beautiful tails. As I've heard many people say, "Aren't squirrels just rats with furry tails?"

But the answer to that is no. According to the internet, they are completely different species. Then, having noticed a couple of undoubted squirrels in a nearby garden with rather challenged tails, I was wondering whether they could interbreed.

Again, the answer is no. In fact, squirrels are extremely exclusive, and crossbreeding even between different types of squirrel is very rare. Red

and grey squirrels are different species.

Squirrels and rats are obviously co-existing in Cherry Tree Wood. Apparently, that's no problem if living conditions are good, but in a famine, rats would lose out to grey squirrels, who are bigger, quicker and more agile. I got this information from <https://neeness.com>, where you can find answers to many different questions.



Never too soon to dream of spring

By Piers Reilly

Every evening this month, staring out into the amber-hued gloom, it can feel as though brighter days are all too far away. Will we ever again be able to sit outside without three pairs of socks and a huge mug of warm tea or, if you want the freezing mist to become a more festive haze, mulled wine?

While the hours of daylight may have faded to what feels like a brief 20-minute window somewhere around lunchtime, we can recapture some of those brighter days by looking forward to a sweeter spring and planning our grand designs.

Now there is no shame in wandering around a garden centre and grabbing what you fancy. Truly gorgeous gardens have been created this way. However as we are driven indoors by the weather, surely we will find a few minutes here and there to sit down and map out a potential masterpiece.

There is no need to get too complex, a pencil and paper will be just fine. Freehand the approximate shape of your garden or whatever space you want to fill, then figure out where the sun rises and sets relative to it.

The true fun begins now, where you are held back by nothing but your imagination (and purse or wallet). Check out a few seed catalogues and explore the huge range of options they provide, look at different plant pairings, consider garden design principles then throw them aside if they restrict you; why not go the whole hog and create a little vegetable patch to enjoy your own produce?

Do not feel held back if space is limited, a garden can be a tin can with a single seed, simply make the most of what you have. Consider going vertical to maximise



High-rise horticulture: This tiered planter makes the most of the limited space in a courtyard garden. Photo Piers Reilly.

your opportunities, or invoke the classic basket and trough techniques for maximum maneuverability.

No matter what you choose,

now is the time to sit down and dream of a spectacular spring. It might even give you something to think about at the office Christmas party.



Sundays at 5pm

Green Man Community Centre
Strawberry Vale N2 9BA

<h3 style="margin: 0;">CAROLS ON THE GREEN</h3> <p style="margin: 0;">12 December at 5pm on the Green in Strawberry Vale</p>	<h3 style="margin: 0;">NATIVITY & CHRISTINGLE</h3> <p style="margin: 0;">19 December at 5pm in the Green Man, followed by tea.</p>
--	--

Contact ashc3108@gmail.com or 07447416381

FIND US ON

THE CHURCH OF ENGLAND



Well, I never knew that!

How much do you know about East Finchley past and present? Test yourself with our 20 fun questions and see how many of the fascinating facts you can guess correctly. Our archives at www.the-archer.co.uk will help you out and you can find the correct answers at the bottom of the page.



Q1

1. Archie is the statue that stands atop East Finchley tube station, but how old is he?
2. Who designed Archie?
3. Which famous comedian and film star once lived at 211b High Road?
4. Where in East Finchley would you find the memorial garden to Octavia Hill, a founder of the National Trust?
5. Which superstar 1980s singer was born above the parade of shops in Church Lane, N2?
6. What crop was grown in the 19th century in Cherry Tree Wood where the playing field is now?



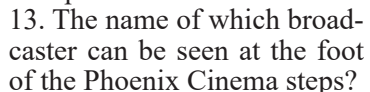
Q7

7. Which East Finchley pub has a plaque inside commemorating where *The Archer* newspaper started?
8. In what year did *The Archer* start?
9. Who opened Holy Trinity Church of England School in Eagans Close in 1974?
10. In which East Finchley road

can you still drop your letters in a Victorian pillar box?

11. Newsagent W H Smith and Son is no longer in East Finchley but its sign and shop door remain. Where can you see them?
12. At which East Finchley pub did bare-knuckle boxing take place?
13. The name of which broadcaster can be seen at the foot of the Phoenix Cinema steps?
14. Which building along the High Road did singing trio The Beverley Sisters open in 2004?
15. Where was a cherry tree

planted to mark *The Archer's* 10th birthday?



Q11

planted to mark *The Archer's* 10th birthday?

16. Which infamous highwayman is said to have hidden in East Finchley?
17. Where did he hide?
18. The readers of which magazine voted East Finchley 'The happiest place in London' in 2015?
19. London's longest continuous tube tunnel runs between East Finchley and Morden (via Bank). How long is this tunnel?
20. The station was renamed East Finchley in 1886. What was its previous name?

planted to mark *The Archer's* 10th birthday?

planted to mark *The Archer's* 10th birthday?



Q10

St Mary's Catholic Church

279 High Road N2 8HG

www.stmaryseastfinchley.org



CHRISTMAS SERVICES

Christmas Eve

Children's Mass with Nativity Play 6 pm

Mass for Midnight: 10 pm

Christmas Day

Dawn Mass 8:30 am

Christmas Day Mass 11 am



Joy of reading: The Archer Academy is launching a book-buying appeal.

A shelf of books for every student

The Archer Academy in East Finchley is taking part in a fundraising drive to support their literacy project called Building the Archer Bookcase. It's part of the national Big Give Christmas Challenge, running between 30 November and 7 December, which means the school will receive £2 for every £1 donated.

The project seeks to provide every student with their own 'bookcase' of at least 20 brilliant books, to act as a gateway to their imagination and develop critical literacy skills. As well as providing books for students who can't afford them, the money raised will fund in-school activities such as author visits and special sessions for students for whom English is a second language, or those with additional needs.

Headteacher Lucy Harrison said: "The impact of the pandemic on our young people has been huge. Isolation, anxiety, poor mental health... there's never been a time when children have so desperately needed the escapism and empathy that books provide. But some of our students don't have any books of their own, or the confidence and fluency with reading to get really lost in a story."

"The Big Give Christmas Challenge will help us provide them with a suite of fantastic books and the skills to access them, and inspire a love of reading that will set them up for life."

If you would like to support the campaign, and raise £2 for every £1 you give, please visit tinyurl.com/archerbookcase. The campaign closes at noon on 7 December.

Wrap up warm to seek and solve the clues in your walking shoes

Freddie from Year 5 at Holy Trinity CE Primary School has been out and about in East Finchley for the second year running designing a clue-finding trail to raise money for the school.

All students at the school are encouraged to take part, receiving a badge for joining in, and this year everyone in N2 is invited to download the Seek & Solve clues and join in the fun for themselves.

The trail is a simple concept which leads you around some popular sites in East Finchley, drawing your attention to details you may never have noticed.

The challenge will run between until Wednesday 15 December and the clues can be downloaded from the school website at www.holytrinityceschool.org.

Those who complete the challenge can either seek sponsorship for doing so, or simply make a donation to the school. Community members are encouraged to drop off completed sponsor/donation forms and much appreciated funds, to a member of staff in the school office in Eagans Close, N2 8GA.

Raising important funds

Items on the school's fundraising wishlist include: art supplies, resources for sensory spaces in classrooms, science equipment, playground equipment, laptops, music resources and forest school resources to name a few.



Quiz-setter: Freddie lays the trail

This year two local businesses are sponsoring the event. East Finchley Supermarket at 156 High Rd will be giving out treats to children solving clues along the trail and getting their clue sheet stamped there. And Dan & Decarlo at 20 High Rd are offering a 10% discount on coffees for grown-ups supporting the trail. Holy Trinity Parent Teacher Association said a huge thank you to both businesses for supporting the school.

Quiz Answers
 (1) 1812 (2) Eric Aumonier (3) Peter Sellers (4) Strawberry Vale, next to the Green Man Community Centre (5) George Michael (6) Watercress (7) Margaret Thatcher (10) Western Road (11) At the Causeway entrance to East Finchley tube station (12) The Five Bells (13) Film critic Mark Kermode (14) Mulberry Court, on the corner of the High Road and Bedford Road (15) At the bottom of Summerlee Gardens next to the entrance to the Cherry Tree Wood (16) Dick Turpin (17) In an oak tree in what is now Oak Lane, N2 18 (18) Time Out (19) 17.25 miles / 27.8 km (20) East End station



Urgent call for foster homes for cats and kittens

By David Melsome

The RSPCA is appealing for people in East Finchley to provide foster care for cats and kittens as they wait to be found permanent homes.

By providing a temporary loving environment, you will play a crucial role in a cat's well-being and socialisation, which will significantly improve their chances of successful rehoming, says the charity.

Foster carers are fully supported through the fostering process and provided with all the necessary equipment, food, and veterinary care for the cats they take in.

cat or kitten to any required veterinary appointments, though usually the RSPCA team will do this.

"Mostly, we ask that foster carers provide their time and patience. Playing and cuddles are a must. And it helps if they can spread the word about the cats in their care so they might find their forever home more quickly," says the team.



Kitten heels: The RSPCA is looking for foster parents for cats of all ages.

"We are particularly looking for fosterers for nursing mums and kittens," says the Finchley RSPCA team. "This can be very demanding and there is a lot of cleaning, feeding and playing involved. We are always looking for cat fosterers for single cats or pairs too."

What is involved

While cats are in your foster care, you will be required to provide them with care, suitable housing and a safe environment following policies and guidelines. Any existing pets/animals in your home need to have been spayed/neutered.

You will maintain regular contact with the RSPCA's animal welfare officers and you may be asked to transport your

Right person, right home

The RSPCA is particularly keen to hear from volunteers aged 18 or over with plenty of experience caring for cats. Fostering experience is beneficial but not essential as guidance and support are provided.

Some cats are ready for rehoming, but others may require rehabilitation or ongoing medication, so the charity will be sure to understand your situation and circumstances to ensure that it matches you with the perfect foster cat.

To apply, please email awo@rspcafinchley.org.uk. Cat fostering roles are subject to a home check and you will also be asked to provide contact referees and to sign a fostering agreement.



Goal mouth action: Wingate & Finchley, in blue, on the attack against Hornchurch FC.

Wingate & Finchley build their season

By Dom Hogan

Following a tumultuous start to the football season, Wingate & Finchley find themselves in 16th spot in the Isthmian Premier Division after 13 games, providing the Blues with a stable foundation to build their season on.

After winning just one of their first four games early in the season, Wingate strung together a brilliant run of results, losing just one league game in September, beating promotion hopefuls Kingstonian 3-1 at home, courtesy of goals from Samuel Hatton and the club's top scorer Bilal Sayoud.

Blues beat champions

However, the highlight of the season so far undoubtedly came in the Third Qualifying Round of the Buildabase FA Trophy, when the Blues welcomed reigning champions Hornchurch FC to the Maurice Rebak Stadium.

Wingate opened the scoring against the run of play after Sayoud curled home a left-footed strike into the bottom corner on 16 minutes, before Hornchurch equalised just 10 minutes later.

With neither side able to break the deadlock in a tense second half, penalties were required to separate the two sides, and goalkeeper Ben Goode's shootout heroics ensured Wingate would be in the hat for the first round of the

FA Trophy.

Having knocked out the holders, the Blues sadly were unable to reach the second round, after losing 1-0 away to Hanwell Town in November, but will undoubtedly be proud of their achievements in reaching the first round proper. They look forward to a busy December.

Special offer

To help fans get in the festive

spirit, Wingate & Finchley are offering half price tickets for the first home game in December that readers bring this article to (Maurice Rebak Stadium, Summers Lane, N12 0PD). A local derby against Haringey Borough coming up on 27 December promises to be a fantastic game. Visit the club's website for more information at www.wingatefinchley.com.



Lookalike: Tina Turner tribute act at the Stag.

Tina Turner spotted in N2

By Lynn Winton

Well, not quite, but simply the best Tina Turner tribute act at The Bald Faced Stag, with a percentage of ticket sales donated to Macmillan Nurses.

New pub manager Louise Fawcett has booked a whole programme of music events including jazz nights, and tribute acts to Michael Buble, Frank Sinatra and Stevie Nicks.

Bookings and the constantly

updated programme can be found at www.thebaldfacedstagn2.co.uk or for further details or party bookings call Louise on 020 8442 1201. Maybe you have some suggestions of your own too... she'd be pleased to hear them.

Specialist family lawyers.

RAYDEN SOLICITORS



There might be challenging times in your life when a family law solicitor can help:

- Have you decided your marriage or relationship is over, are you unsure about your family's future?
- Do you need to protect your children, or understand the options to resolve arrangements for your children?
- Do you need a pre nuptial or post nuptial agreement to protect assets?
- Are you moving in with your partner and need a cohabitation agreement?

Choosing the right family lawyer for your circumstances is crucial. Rayden Solicitors are family law specialists with many years' experience; we provide tailored and practical solutions in all areas of family law - divorce, relationship breakdown, child arrangements and financial settlements.

Bespoke advice from Rayden Solicitors in Hampstead.

Contact us, enquiries@raydensolicitors.co.uk

HAMPSTEAD

6a Hampstead High Street, London, NW3 1PR. Tel: 020 3925 4809.

RAYDEN SOLICITORS
www.raydensolicitors.co.uk

We are available on





Nutritionist explores treatment through food and lifestyle

By Hannah Duncan

Being hospitalised with a series of autoimmune conditions changed Elisa Tricon's life forever. As she began researching ways to improve her condition herself with food, she stumbled upon a ground-breaking realisation.

"Everyone has an opinion about nutrition... and many times, it's not founded on research," she says. This may explain why University of Pennsylvania research shows that 65% of fad-dieters regain the weight they lost, and many have a miserable time.



Food therapy: Elisa Tricon

"Each person is unique," stresses Elisa. So a one-size-fits-all approach to nutrition is a sure-fire way to spot a fake diet.

Throwing away everything she thought she knew, Elisa created research-based nutrition and lifestyle plans for herself from scratch. She began to see real improvements and today she's in full remission.

Individual nutrition planning

This was the trigger she needed to pack up her day job as a business consultant and start

her own coaching programme. Based in East Finchley, Elisa now creates personalised nutrition plans and helps clients online from all over the world.

Elisa supports others who are suffering with chronic illnesses. She also coaches customers looking to lose weight or who are on a fertility journey.

"I love to see the transformation," Elisa says. "For example, I was recently working with someone who'd suffered from migraines for 40 years. It was really impacting her social life. After we worked together a few months, she's no longer suffering from migraines, she's going out, making friends and isn't afraid of travelling."

A connected community

In stark contrast to a few years ago, the future is bright for hardworking Elisa, who continues to support new clients every day.

Central to her philosophy are "nurture, community and joy". Elisa is thriving in East Finchley. "I love the community spirit," she beams. "London is a big city, and not everyone is connected, but here, I knew my neighbours for the first time... Even during lockdown it was amazing to see so many local initiatives."

Elisa is interested to see if there is a local appetite for nutrition workshops in East Finchley. If you'd like to learn more, you can contact her at www.livingwellbee.com

N2 Poets make it issue number nine

By Daphne Chamberlain

Dennis Evans is the founder of N2 Poets, a group of writers who celebrated their ninth anthology in October. The first one appeared 10 years ago, and an aim of the group has always been to publish at least one collection annually. However, as we all know, last year changed many things. Our poets have bounced back though, with a very lively and varied selection. The launch was held at the friendly venue of East Finchley Methodist Church.

Another regular feature that had to be suspended was Dennis's monthly workshop, but this is now resuming. Several group members shared their poems online throughout the lockdowns.

We discovered at TheArcher that there are a number of other poets writing locally, who might well be interested in contributing to the next anthology.

Submissions (a maximum of four poems) should be sent

for consideration to n2poetry@outlook.com, including name and contact details.

If you are unable to use email, send poems, typed on white A4 paper, to Shereen Abdallah, Managing Editor, N2 Poetry Magazine, 3 Leslie Road, N2 8BN, with a covering letter and SAE.

Meanwhile, why not enjoy Issue 9, at a cost of £5, from Steph Bramwell, 35 Pember Road, NW10 5LT.



New music: Guitarist and songwriter Charlotte Besley has released her first EP.

Debut release from festival star

Anyone who went along to the Late Summer Social in Cherry Tree Wood in September may remember the star turn from East Finchley singer songwriter Charlotte Besley on the music stage.

Her performance was a preview of her debut EP, called *History*, which has just been released on streaming platforms, iTunes and features three of her self-written songs.

With a sound inspired by artists like K T Tunstall and Laura Marling, Charlotte's lyrics explore relationships, human behaviour and finding

your way in life.

Charlotte said: "By sheer coincidence, shortly after writing these songs in lockdown, I was approached by a talented producer, João Lebre, who mixed and mastered the whole EP and encouraged me to start promoting myself as a solo artist. If it wasn't for him, these songs probably wouldn't have

seen the light of day so I have a lot to thank him for and just hope that I can do his work justice."

Charlotte studied Popular Music Performance at the London College of Music around seven years ago and has been performing in bands ever since alongside her full-time job in PR and events.



Dynamic: Michael Duke's portrait of a dancer at the Notting Hill Carnival.

A whirl of dance for Florence show

A local artist has returned from Italy after exhibiting four of his photograph-based works at the 13th Florence Biennial of Contemporary Art and Design. Each was a study of women dancing and tied in with the exhibition's theme of 'Feminine Eternal'.

Michael Duke said: "That did not mean that it was a 'women-only' exhibition, but how we see femininity. This is always how my creative images work, starting as photographs and then depending on the

subject, I decide how far to go with the treatment. Here the treatment was enjoyable as it was expected to be as artistic as possible."

Michael was invited to take part in the exhibition after win-

ning a number of distinctions in a series of photographic salons and being noticed by the Florence Biennial organising board. He is now also receiving invitations to similar events in Barcelona and Berlin.



Letters



Barking: The Halloween window display at Fetch22 (see letter, below right)

Where's the bus?

Dear Editor,

Can someone please explain to me the need for a bus lane spanning the length of East Finchley for the one, mostly inconsistent bus service? It is because of the shabby 263 service that I learned to drive in the first place!

The congestion and pollution across the whole of East Finchley is not worth closing one lane through the streets for the only bus that uses it. Get it gone, in my opinion!

James Nassour,
Address supplied.



On high: Mistletoe

Mistletoe on high

Dear Editor,

Mistletoe is a plant not seen that often in London but it has at least two healthy representatives in the East Finchley area. The one shown in the photo is on a large poplar in East Finchley cemetery; and there are other clumps on a tree near Avenue House, in Hampstead Garden Suburb, and behind Cranley Gardens in Muswell Hill. See if you can spot them.

Mistletoe has long been recognised as an unusual plant and indeed it is. It is hemi-parasitic, which means it thrives best when it can tap into the vascular tissue of a host plant, such as apple, hawthorn and related species, and thus gain extra nutrients. It produces semi-translucent whitish berries, which contain seeds, and which are eaten by birds.

The plant in the photo was one small clump a year ago, but is obviously thriving, and probably spreading. There may well be lots of other clumps in the area, only really apparent when the host trees have shed their leaves to survive the winter. I would be most interested to hear of other examples.

Linda Dolata,
Address supplied.

Dog bones

Dear Editor,

I walked down the High Road daily during Halloween and thought the shop window at Fetch22 dog groomers was special and funny. It made many people smile and was quite a talking point.

Natalie Szalai,
Address supplied.

Dennis's tribute

Dear Editor,

Now that COP26 is over, I remembered that approximately 50 years ago, my design engineer colleague Brian was arguing for us to design for renewable energy. This is a poem I wrote in his honour.

An Engineer,
he designed machines.
He knew about wind-power,
Its properties, potential....
He would sketch at his drawing board
Schemes of great elegance.
Colleagues thought him a crank.
Brian ignored the mocking,
remained his good-humoured self.
Vindicated, I think of you now.
Brian, take your bow!

*Published in Occasional Poems
(Celebration Press, London).*

Dennis Evans,
N2 Poets.

N2United: bees, art... and taxes

By Chris Stavrou

The N2United November get together was as eclectic a mix as ever, with local businesses, interest groups and residents gathering at the East Finchley Constitutional Club for the second time since meetings were in person again.

A number of guest speakers spoke passionately about varied topics, including Kate Brown from the East Finchley Pollinator Programme. The meeting attendees learned of the importance in creating "pollinator highways" and how the local community can get involved, including which flowers best suit pollinating insects and where we can all plant them. This project will require community participation on all levels. There will be much more coming up if you're interested in the pollination project, including a Zoom meeting in late January 2022.

Taxing matters

Drazen Coric, of TaxAssist Accountants, spoke on the recent Budget announcement and the impact on businesses, the self-employed, employers and employees that the changes will have when they are enforced in April 2022.

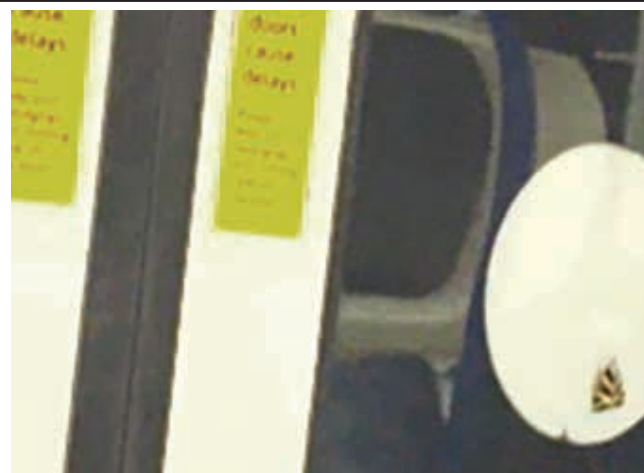
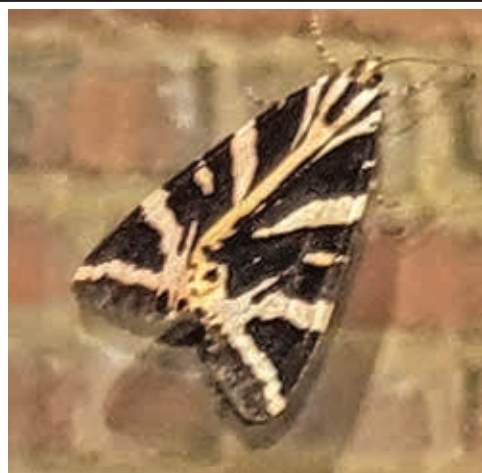
From the longstanding East Finchley Open Artists group, Peter Hale discussed how lockdown had prevented their yearly main event where the group showcase their art in open houses. The change in circumstances gave them the opportunity to revamp their website,

reaching not just the regular visitors but art appreciators from further afield.

Open meetings

All N2 residents, traders, businesses and community organisations are welcome at meetings. Their next meeting will be a social gathering on 9 December, and the theme in the new year will be turning a new green leaf, with speakers from Bin There Donate That, No2PlasticsN2 and local trader Peter Barnett of A Scott's fish.

Find out more about N2United's regular meetings at www.N2united.co.uk.



City slickers: Jersey tiger moths photographed on a patio door and a Northern line train

Moths make themselves at home

By David Melsome

In October we printed a photo of a striking Jersey Tiger Moth taken by Tony Roberts during a walk in Coppetts Wood in Friern Barnet and noted that the moths, once rare in Britain, now seem to be spreading north from their established habitats on the south coast. The evidence is certainly mounting after two more readers sent us photos of their sightings.

Prem Stasopoulos photographed one basking on a window in Diploma Court, off the High Road, with a trick of perspective making it look huge against the brickwork outside. And if any further proof was needed that the moths are adapting quite nicely to London life, Rachel Winton snapped one hitching a ride on the door of a Northern line train heading south. Saves a lot of flapping!

Fun and support for seniors

Age UK has a full line-up of activities and support groups planned for the winter months in East Finchley. Here's a quick round-up with the appropriate contact details to find more information:

Book club

Age UK Barnet's next book club session is on Tuesday 7 December at the Ann Owens Centre, Oak Lane, N2, from 3.30pm to 4.30pm. To sign up contact Helen on 07384 466840, helen.nicolaou@ageukbarnet.org.uk

Scams awareness

Met Police officer Tom Lee will give a talk about protecting yourself against common scams on Monday 13 December at 11am. Contact Lindsey on 07535 648281, lindsey.bennister@ageukbarnet.org.uk

Sporting memories

Join the Age UK Barnet team every week on a Monday evening from 6pm to 7pm for a convivial and fun group discussion about your personal sporting memories, hosted by former sports journalist Ed Newman.

Talk the News

If you're interested in news,

current affairs and politics, this is the group for you. Hosted by the former political editor of the Evening Standard, it will run from 11am to 12noon starting on 11 January. Contact Lindsey on 07535 648281, lindsey.bennister@ageukbarnet.org.uk

Befriending

Age UK's Dementia Befriending Service provides companionship to older people who are living with dementia. Contact Becky on 020 8150 0967/07990 705170, rebecca.bayne@ageukbarnet.org.uk

Volunteers needed

Age UK is looking for volunteers for shopping assistance, befriending, running activities, dropping off leaflets and helping older people with their smartphones and laptops. Please contact Lisa on lisa.robbs@ageukbarnet.org.uk or 020 8432 1422.

ALL SAINTS' CHURCH

Church of England
35a Durham Road, East Finchley, London N2 9DP

Christmas Services

Sunday 19th December

Get in the mood for Christmas!!

6.00 pm Christmas Carol Service

Friday 24th December

Christmas Eve

4.00 pm Crib Service & Christingle
9.00 pm Sung Mass of Christmas Night

Saturday 25th December

Christmas Day

8.00 a.m. Mass of the Dawn
10.00 am Sung Mass of the Day

For more details, contact:

Fr Ian Chandler

020 8883 9315

or check our website:

www.all Saints-eastfinchley.org.uk



New bus services and changes to existing routes

Transport for London is asking passengers to give their views on a number of changes it is proposing to bus routes in East Finchley and the surrounding area. First, TfL wants to swap the routes that the 143 and 263 take between Archway and East Finchley. Under the proposals, the single-decker 143 would switch to travel via Archway Road, while the double-decker 263 would travel via Highgate and North Hill.

“Rerouting the 263 via Highgate Village would mean that key connections between Highgate village and Holloway Road are retained. It would also create new links between Highgate Village and other locations in north London, such as North Finchley, Whetstone, High Barnet, and Highbury Barn,” said TfL.

The links between Bishop Douglass School in East Finchley and Highgate village, currently served by the 143, would be retained by the introduction of a new 620 school route on week days only.

TfL is also proposing the extension of the existing N271 night route from Moorgate beyond Highgate to East Finchley and North Finchley along the A1000, where there is currently no night bus. Find out more details and make your views known before 9 January 2022 at <https://haveyoursay.tfl.gov.uk/routes-21-143-263-271>

Where in East Finchley...? Ten more teasers to find




Our Where in East Finchley picture quiz was so popular last December that we’ve brought it back for a second year. Over the last few weeks, our photographer Mike Coles has been out and about capturing the little landmarks and special sights that are all around us but perhaps go unnoticed when we’re rushing by every day.

The montage above shows 10 new signs, objects and locations dotted around N2.

Can you identify them all?

Some may be instantly recognizable while others could look familiar but are harder to place. All 10 are inside the borders of East Finchley and most are on popular routes so next time you are walking out take this quiz with you and see how many you can find.


Thanks to Mike for laying the trail. This quiz is just for fun so keep your answers to hand and we will reveal all the locations in our January edition.












SECUREBASE
DOMESTIC COMMERCIAL INDUSTRIAL SECURITY
Est 1988

Your Security Problems Solved!

- ▶ Intruder Alarms
- ▶ CCTV
- ▶ Access Control
- ▶ Intercom Systems
- ▶ Locks, Doors & Keys
- ▶ Safes & Grilles
- ▶ Locksmiths



Constructionline

020 8442 0660
Securebase Ltd
112 High Road, East Finchley, London N2 9EB
T: 020 8442 0660
F: 020 8365 2788
info@securebase.co.uk
www.securebase.co.uk

COLIN SCLARE

Sales & Lettings

The Brentano Suite, Lyttelton House, 2 Lyttelton Road, London N2 0EF

We cover East Finchley, Muswell Hill, Hampstead Garden Suburb, North Finchley, Whetstone, Finchley Central, Barnet, Friern Barnet, Golders Green, Archway, Islington and parts of the City.

Letting fee: 7% (= 8.4% incl vat) Sales fee: 1.5% (= 1.8% incl vat)

But more importantly, a quality service to you!

Open 6 days a week

9.30 am - 7 pm Monday to Friday 10 am - 3 pm Saturdays

07891368049

Contact us on

020 8444 3351

www.colinsclare.co.uk

info@colinsclare.co.uk