



Left: A new tree planted outside Budgens where the old one was dug up. Right: the old tree. Photos by Mike Coles

## New resident takes root in the High Road

During the early spring, council workers seemed to be particularly energetic in removing dying or potentially dangerous trees from our streets and avenues. But it hasn't all been one way. New trees have been planted in selected spots too.

One such is a sapling that appeared last month in front of Budgens in the High Road and seems to be settling in well. It's in the spot occupied for decades by a tree which ended up leaning at a perilous 45-degree angle into the path of passers-by.

The council cut that tree down at the end of last year and left a severed stump behind. At the time, our local nature watcher and blogger Bug-woman grabbed the chance to peer into the tree's life history.

### Reading the rings

"As we all know from our school biology classes, you can read a tree's age from its rings," she wrote, "but identifying clear rings on this trunk would be very difficult. And yet, we can make out the inner circle of heart wood, which forms when the cells in the trunk are no longer used to transport water from the roots to the leaves, and become a structural support instead.

"I am also intrigued by the very dark circle in the heart of

the stump, which looks almost as if a proper ring of bark formed, and was then grown over. Or is this a relic of some traumatic or unusual event? All I do know is that, just as the wrinkles on a beloved face tell us something about a person's life, so these rings have all the history of this tree, if someone with enough skill could read them."

Let's hope the tree that has taken its place has a long and healthy life in its new home... and keeps on the straight and narrow!

## Is Woodside Copse in danger?

Did you know that we have a unique wildlife haven on our doorstep? Woodside Copse, just off Woodside Avenue, N10, is a small pocket of woodland, home to many birds and mammals, including bats. Free from human disturbance and untouched for 50 years, it is possibly richer in wildlife, for its size, than nearby Highgate Wood.

However, there are fears that Woodside Copse is now under threat. Despite substantial local opposition, Haringey Council has given permission for Ambitious About Autism (AAA), the charity that runs the neighbouring TreeHouse School, to develop the site.

Opponents of the develop-

ment fear that this will set a precedent allowing structures to be built on this site and argue that the long-term future of the woodland hangs in the balance now that an initial development has been allowed.

The Friends of Woodside Copse have opposed AAA's development at each stage,

claiming it allows excessive human intrusion into the copse.

### Concern for trees

"It is part of an important green corridor and a Site of Importance for Nature Conservation in Haringey's Local Plan, and should have been protected from development," say the Friends. "Shrubs and trees that have naturally grown for over 50 years will have to be removed to accommodate new structures, despite Tree Preservation Orders."

It is alleged that the site is already being cleared, even though it is not permitted to disturb birds during the nesting season from late February to late August. The Friends of Woodside Copse is asking people to report any tree cutting to them by email at [friendsofwoodsidecopse@gmail.com](mailto:friendsofwoodsidecopse@gmail.com) or write a complaint on the Haringey Council website.

THE ARCHER has approached Ambitious About Autism for a comment but at the time of going to press had not received a reply.

## New home care plans for children with limited life expectancy

Noah's Ark's Children's Hospice has partnered with Life Force, part of Whittington Health, in a new project to provide children's hospice care in the home to more families.

Life Force is a hospice at-home support service working across Camden, Haringey and Islington. The new project will rely on dedicated volunteers and the search is on to recruit more of these to help in family homes. Noah's Ark is calling its contribution to the pilot 'Project Applesseed'.

Already volunteers magnify the hospice support Noah's Ark supplies in Central and North London communities by 8,000 hours a year. As well as providing support to new families, the pilot will capture vital information about the positive impact of volunteers in community hospice provision.

### Relieving pressure on families

East Finchley resident and Barnet Civic Award winner Mary O'Toole introduced the Noah's Ark volunteer model in 2008. She

welcomes the new pilot saying "I'm delighted that the impact and value of this model is garnering interest nationwide. Certainly our experience has been that the benefits are proven to volunteers themselves as well as families, along with providing vital efficiencies to our organisation."

Mary emphasised how matching volunteers with overwhelmed families takes

the pressure off. Help with household tasks, gardening and with brothers and sisters allows families more precious time together. Staying on top of medical appointments and other arrangements can add to the strain, but those who feel the need for help can make a start by calling 020 8449 8877.



Mary O'Toole. Photo courtesy of Noah's Ark Children's Hospice

This is also the telephone number for care queries, to donate, to volunteer or to support the hospice's charity shops. If you would like to sign up as a Home Support Volunteer please visit: [www.noahsarkhospice.org.uk/family-support-roles](http://www.noahsarkhospice.org.uk/family-support-roles).

For information on the successful charity partnership between Noah's Ark and Spurs visit [www.ForPreciousMoments.com](http://www.ForPreciousMoments.com).

### All Saints' Church, Durham Road, East Finchley Church of England

Sunday masses at 8.00 a.m. and 10.00 a.m.

Weekday masses at 10.00 a.m.

(Coffee served after mass on Sunday and Thursday)

Prayer requests are gladly accepted.

The Parish has a *flourishing* social life.

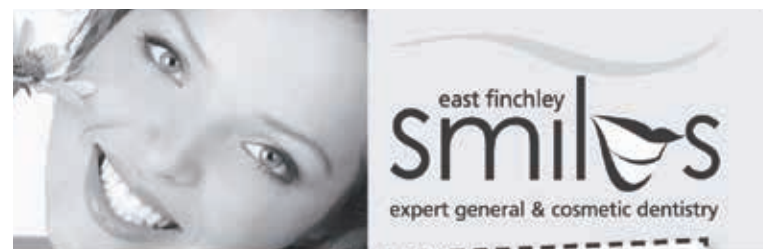
Contact the Vicar, Fr Christopher Hardy,  
on 020 8883 9315.

All Saints' also has a strong musical tradition and an enthusiastic choir.

Experienced singers are always welcome.

Contact Geoffrey Hanson on 020 8444 9214.

<http://www.allsaints-eastfinchley.org.uk>



**NHS CHECK-UPS £18.80**  
(this includes x-rays where necessary)

**NHS EXEMPT PATIENTS AND  
CHILDREN UNDER 18 ARE FREE**

**new NHS list now open**

member of the  
BDA and the BDHF



smile with confidence

**020 8444 3436**

144 The High Road, East Finchley, London N2 9ED

[www.eastfinchleysmiles.co.uk](http://www.eastfinchleysmiles.co.uk)