



Copse to be a space for children in need

By Cathy Young

On the edges of Muswell Hill, off Woodside Avenue, there is a haven known as Woodside Copse, an ideal habitat for local wildlife. However, that peace has been threatened by a dispute between The Friends of Woodside Copse and the charity Ambitious About Autism.

In our June issue, we reported on the Friends' concerns that the natural state of the copse was being altered by the charity, which runs the TreeHouse School on neighbouring land. *THE ARCHER* visited Ambitious About Autism (AAA) to hear their point of view.

Skills and experiences

AAA told us it rented the land from Thames Water to provide a space for children and young adults in their school to experience the natural world and develop their horticultural skills.

"We extend our care for pupils a year beyond 18 in

order to help them enter the workplace," Julia Lampard of AAA explained. "For many it is difficult to find and then keep jobs. With this project we aim to give them the skills to do both. Also, many of them have no access to gardens. Their families sometimes find it difficult to take them to parks and open spaces. We want our children to experience what other kids take for granted."

Showing capabilities

The charity gained permission to create an area where the young adults can develop their horticultural skills under strict supervision, with 12 raised

beds, two polytunnels and a shed on just a third of the land. For the welfare of the children who need a safe and enclosed space and to maintain the site itself, a chain-linked fence is to be erected inside the present iron railings.

"As well as enjoying nature, the outdoors and developing their horticultural skills, being out in the open gives our children a different experience and makes them visible to the rest of society," said Julia. "Many of them have complex issues but we want people to see what they can do, rather than what they can't."



On the road: Bill Tyler on Bornholm

Bill walks the walk on Baltic isle

By Daphne Chamberlain

In June we told you about Bill Tyler's plan to walk 82 miles along the rocky coast of the Danish island of Bornholm to raise money for Muswell Hill charity Ambitious About Autism. In spite of being temporarily trapped in some of those rocks, he has done it.

It was a solitary trek as the holiday season hadn't started. Among the rocks, he put his foot on a loose boulder. Next minute he was flat on his back, with his rucksack wedging him firmly in place. He told me: "I didn't worry about the tide. They hardly exist there, but I could see myself lying there all day, waving my arms and legs like a landed crab". Luckily he did wriggle free before a search party was called out.

He stayed every night at his Bornholm friend's house. The original plan of staying at B&Bs fell through because visitors' accommodation is now mostly in holiday homes. He did, however, manage to polish

off a few glasses of Carlsberg, and made regular "pit stops" at various welcoming English-speaking cafes.

Bill also took the opportunity to speak to local parents of autistic children. He is extremely grateful for sponsorship money which has come in so far, about £9,500, with more promised; and is looking forward to seeing Ambitious About Autism's new college which will give training and employment opportunities to young people with autism.

Donations will still be greatly appreciated. Please send cheques to Ambitious About Autism, The Pears Centre, Woodside Avenue, N10 3JA (mention Bill!).

Twelve hours on the march

Our very own sub-editor Jeff Robson and his partner Sue Bayford have raised more than £1,200 from their sponsored walk to Cambridge in aid of Blind Veterans UK (*THE ARCHER*, June 2016).



Jeff, who works for the 'i' newspaper, and Sue completed the 50km trek in just over 12 hours. "We didn't break any records," said Jeff, "but we really enjoyed it."

"It was worth all the blisters to raise so much money for such a worthy cause. Blind Veterans have given so much help and support to Sue's 91-year-old dad Jack, who served with the RAF in Burma during World War Two, and to ex-servicemen and women throughout the country, and we just wanted to give something back."

"We've been bowled over by how generous people have been. I'd like to say a huge 'thank you' to everyone who donated, and who sent us 'good luck' messages on the day."

"I think we've got the bug now, and would like to do something similar again. But we're taking a bit of a rest first."

We made it! Jeff and Sue, above left, at the finishing line

Holy Trinity Church Church Lane, East Finchley Church of England

We're a warm and friendly congregation who look forward to welcoming you

Sunday Parish Communion at 10.00 am

Children's Sunday Club ♦ Meet over coffee after church

Fr. Gray Featherstone is happy to answer any enquiries:

Tel: 020 3602 2788

www.holytrinityeastfinchley.org.uk

A friendly welcome awaits you

EAST FINCHLEY METHODIST CHURCH

197 High Road, London N2 (opp. Creighton Ave.)

tel: 0208 346 1700

www.eastfinchleymethodist.org.uk

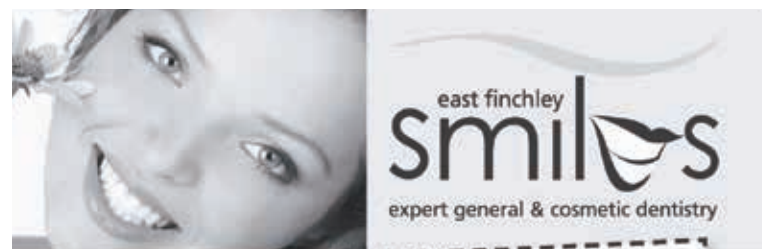
Sunday service at 10.30 a.m.
With Crèche and Young Church

Worship Music Social events Wheelchair friendly
e-mail: info@eastfinchleymethodist.org.uk Room hire tel: 020 8444 9887

More zebras

Barnet Council has given notice that it intends to install two new zebra crossings in N2, both in East End Road. One will be situated close to the junction with Stanley Road while the other will be just east of its junction with Market Place and Deanery Close.

No decisions have yet been made about the crossings and phasing of the traffic lights at the Fortis Green and High Road junction.



NHS CHECK-UPS £18.80
(this includes x-rays where necessary)

NHS EXEMPT PATIENTS AND CHILDREN UNDER 18 ARE FREE

new NHS list now open

member of the BDA and the BDHF  

smile with confidence

020 8444 3436

144 The High Road, East Finchley, London N2 9ED

www.eastfinchleymiles.co.uk