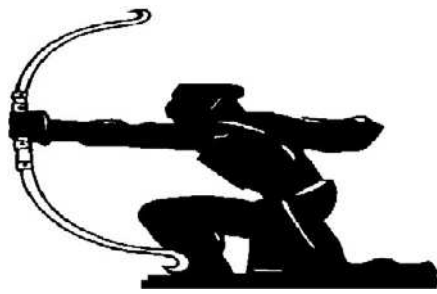


**JEREMY LEAF & CO.**  
Professional Sales & Lettings  
AT COMPETITIVE RATES  
020 8444 5222  
eastfinchley@jeremyleaf.co.uk

Local News is our Aim

# THE ARCHER



**GLH**  
www.glh.co.uk  
**020 8883 5000**  
**CARS & COURIERS**

June 2013 No. 235  
ISSN 1361-3952 **20p** where sold

*A community newspaper for East Finchley run entirely by volunteers.*

## Get ready for Festival 2013

**East Finchley Festival returns to Cherry Tree Wood on 23 June with a new name and a TOP SECRET world record attempt that everyone can join in.**

It will still be the East Finchley Festival we all know and love but this year it's going under the name of the U&N2 festival. There will be limited edition T-shirts emblazoned with the new name available as prizes on the day.

Organisers say this year's festival will be the best ever and they're focusing on getting the audience involved, so they feel they are part of the day. This means festival goers will be encouraged to contribute on the day with their messages, jokes and comments, which they can send via twitter (twitter.com/UandN2) or by text 07983 360834.

Messages will be read out from the main stage,

should be a lot of fun for people of all ages. So if you wish to be part of history, you need to be in Cherry Tree Wood on 23 June, kicking off from 12 noon until 6pm.

As usual there will be live music and entertainment across two stages, both showcasing local talent, along with an array of local businesses, organisations and food stalls.

And of course the festival wouldn't be complete without the beer and food tents, where your support helps to keep the event a free one.

If you wish to book a stall, some spots are still available, so contact the festival team on 07983 360834, or at eastfinchleyfestival@gmail.com



Hoping for sunshine. Crowds have flocked to the festival in Cherry Tree Wood in previous years.

Photo by John Lawrence

## Thousands cut off in phone cable chaos

By Janet Maitland

**Thousands of homes and businesses were left without phone and internet services when thieves ripped out several hundred metres of copper telephone cable at the Muswell Hill telephone exchange.**

Homes, shops and offices across East Finchley were cut off for at least four days from 22 April, and some for days or weeks afterwards, as engineers struggled to restore services. Thieves had targeted the cables for their copper wiring.

The pattern of the chaos across N2 was unpredictable with some people being cut off while their neighbours were unaffected, depending on which exchange they were connected to.

Continued on page 2

### In this issue:

High Road parking.....p3  
Cherry Tree Koisk reopens....p4  
CPZ update.....p6  
East Finchley's Big Dig.....p7  
Your letters.....p11  
Eden Primary time capsule.....p12



You could win a limited edition U&N2 t-shirt on the day

hosted this year by MOBO award winner and local resident Pat 'Have Mercy' Leacock. Between bands, Pat will be DJing and getting festival goers involved with a host of games and activities.

And to top it all, with the audience's help, there'll be a secret record attempt, details of which will remain under lock and key until the day. *THE ARCHER* has been given a few clues and suffice to say it

## VICTORY AUTO SERVICES

### Air-Conditioning - Recharge & Servicing

Mechanical repairs, tyres,  
bodywork, clutches, exhausts  
MOTs by appointment

109 Fortis Green East Finchley London N2 9HR  
Tel: 020 8883 9707 / 0023 Fax: 020 8482 9179



.....The Right Choice

Estate Agents - Valuers - Residential Sales - Lettings - Management - Cyprus Properties  
40 High Road East Finchley London N2 9PJ Tel: 020 8883 9090 Fax: 020 8883 8580  
Email: enquiries@primelocations.co.uk Website: www.primelocations.co.uk

Call us for a Free Valuation. Family Business you can Trust.

**PRICKETT & ELLIS** ESTD 1767

82 High Road  
East Finchley  
N2 9PN

020 8883 0033

highroadn2@prickettandellis.com

Estate Agents and Valuers - Established 1767



**ELECTRICIANS**  
for Commercial and Domestic work

RECYCLE BATTERIES  
HERE!



WE ARE STILL  
STOCKING 60 & 100w  
INCANDESCENT  
BULBS



38 HIGH ROAD, EAST FINCHLEY, N2 9PJ Tel: 020 8444 7994

• Visit your community newspaper on-line at [www.the-archer.co.uk](http://www.the-archer.co.uk) •





## THE ARCHER

PO Box 3699, London N2 2DE

[www.the-archer.co.uk](http://www.the-archer.co.uk) Email: [the-archer@lineone.net](mailto:the-archer@lineone.net)

[@TheArcherN2](https://twitter.com/TheArcherN2) [www.facebook.com/TheArcherN2](https://www.facebook.com/TheArcherN2)

Voicemail (messages only) 0800 612 0748 for editorial and general enquiries or 0800 612 4027 for Advertising enquiries only

**Published by**  
East Finchley Newspapers

**Copy Editor**  
John Lawrence

**Production Editor**  
Alison Roberts

**Picture Editor**  
Mike Rubens

**Editorial Team**  
Diana Cormack  
Daphne Chamberlain

**Sub Editors**  
Ann Bronkhorst  
Jeff Robson  
Pam Kent

**Finance & Advertising**  
John Dearing

**Distribution**  
Toni Morgan  
Rose Molloy

**Printed By**  
Sharman & Co Ltd

Thank you to The Bald Faced Stag for providing us with a meeting place.

THE ARCHER team wishes to thank all the generous people who give up their spare time, in all weather, to deliver the paper for us.

If you have a story for us, please contact us at the above address. Comments to THE ARCHER may be published unless clearly marked 'Not for publication' within the text.

Copy deadlines – **July:** 14 June, **August:** 12 July, **September:** 16 August

## USEFUL TELEPHONE NUMBERS

### Councils

#### Barnet Council:

Admin/Town Hall	020 8359 2000
Council Tax	020 8359 2608
Recycling & refuse	020 8359 4600
Primary Care Trust	020 8201 4700
Benefits Agency	020 8258 6500
Employment Service	020 8258 3900
<b>Haringey Council</b>	020 8489 0000

### Leisure

Alexandra Palace	020 8365 2121
East Finchley Library	020 8359 3815
Muswell Hill Odeon	0870 505 0007
Phoenix Cinema	020 8444 6789
Warner Cinema	020 8446 9933

### Transport

Nat. Rail Enquiries	0845 7484950
City Airport	020 7646 0088
London Transport	020 7222 1234
National Express	08705 808080
Heathrow Airport	0870 000 0123

### Hospitals

Barnet General	0845 111 4000
Coppetts Wood	020 8883 9792
Finchley Memorial	020 8349 7500
Oak Lane Clinic	020 8349 7000
Royal Free	020 7794 0500
St Luke's	020 8219 1800
Whittington	020 7272 3070

### Health Advice

AIDSline	020 8363 2141
Alcoholics Anonymous	0845 7697555
Barndoc	0300 033 3777
Barnet MENCAP	020 8203 6688
Cancer Support	020 8202 2211
Drinkline	0800 917 8282
Drugs Helpline	0800 776600
MIND	020 8343 5700
NHS Direct	0845 4647

### OAPs' Advice

Age UK	020 820 35040
Contact (N2)	020 8432 1415

### Crime

Emergency	999
Barnet Police	101
CrimeStoppers	0800 555111
Victim Support	0845 303 0900
East Finchley Safer	
Neighbourhood Team	020 7161 9014

### Help & Advice

Advice Barnet Project	0844 826 9336
CAB Money Advice	020 8201 7727
Carers' Line	020 8343 9698
Childline	0800 1111
Disability Info Service	020 8446 6935
Gingerbread	020 8445 4227
National Debt Line	0808 808 4000
NSPCC	0800 800500
Rape & Sexual Abuse	020 8683 3300
Relate	020 8447 8101
RSPCA Inspector	0300 1234 999
RSPCA animal clinic	020 8365 3910
Samaritans	08457 909090
Refuge Crisis Line	0870 599 5443

## Extra officers for Safer Neighbourhood police team

By Janet Maitland

**The Mayor of London's four-year policing plan aims to make neighbourhood policing "the foundation of policing in London" and will have a big impact on our local Safer Neighbourhood Team (SNT).**

The team is currently made up of just one police constable and five Police Community Support Officers (PCSOs) but from June an extra five to seven police constables will be drafted in.

"The policing plan is good news for local residents," said Sergeant Matt Cleve, who leads the SNT. "The new officers will be dealing with a lot of the high volume crimes like theft and common assault. This means that if a local resident is a victim of this sort of crime, one of the new constables will lead the investigation."

### Gains and losses

The policing plan is not uncontroversial. Sixty three of the 136 police front counters in London will be closed and new 'contact points' created. Each borough will have one contact point open every day for 24 hours. There will also be 94 points across London, opening a minimum of three days a week. It is not yet clear where the Barnet points will be other than at Colindale and Barnet police stations.

East Finchley will also be losing some of its five PCSOs as well as gaining police constables. But Sergeant Cleve is confi-

dent that this is a long way off.

"The number of PCSOs won't go down any time soon. And the extra police constables will certainly be patrolling the streets of East Finchley, as well as investigating local crimes," he said. "The policing plan also guarantees that a minimum number of SNT officers will always be available on each ward."

At present, all five PCSOs can be called away to deal with urgent crime issues in another part of the borough, sometimes at the same time as Sergeant Cleve and the police constables are also elsewhere dealing with police work. But the policing plan carries a promise from the Metropolitan Police Commissioner that one dedicated police constable and one dedicated PCSO must stay in each ward.

*The Safer Neighbourhood Team office is at 113 East Finchley High Road, N2 8AG. You can talk to the officers you see on patrol about any crime concerns. You can also ring them on 020 7161 9014 or 07887 632767 or email them at [East-Finchley.snt@met.police.uk](mailto:East-Finchley.snt@met.police.uk). To report a crime that is taking place, dial 999. To talk to police about a crime that has already happened, dial 101.*

## The Met needs you

By Janet Maitland

**The Metropolitan Police has started a campaign to recruit 400 extra cadet leaders aged 18 to 65 to support a drive to increase its Volunteer Police Cadet (VPC) programme by 4,000 cadets.**

The VPC is a uniformed voluntary youth organisation, supported by the Metropolitan Police, which is open to 13 to 18 year olds. The cadets help and assist in the community in a variety of ways, including working with Safer Neighbourhood Teams, taking part in problem solving projects and stewarding at events such as Trooping the Colour and Remembrance Day.

Cadet Leaders, who are also volunteers, support cadets by helping them to develop life skills, including assisting them as they take part in the Duke of Edinburgh's Award and weekend and school holiday camps.

To find out more, go to [www.met.police.uk/cadets](http://www.met.police.uk/cadets) and for details on how to apply, go to [www.metpolicecareers.co.uk/cadets](http://www.metpolicecareers.co.uk/cadets) or call 0845 434 9519 for an application form.

## Road floods

A burst water main closed a section of the High Road on Friday 17 May causing severe disruption to traffic and diversions for local bus services. The northbound carriageway outside the tube station was shut for several hours while engineers made repairs.

## Phone cable chaos

Continued from page 1

Jonathan Maitland, a BT customer living in Long Lane, was without a broadband service for 17 days, during which time his phone line had been reconnected but all his calls wrongly routed to a different number.

"I'm in the middle of trying to sell my flat, so it couldn't have happened at a worse time. BT came to sort out the problem only after I sent emails to all the chief executive officers at BT," he said. "They have given me £34 compensation."

A spokesperson from BT said that although the service was back they were still dealing with residual faults. "Our engineers worked as fast as possible," said the spokesperson. "Attacks on BT's network generate tens of thousands of faults each year."

Mike Walsh, who was without his phone and broadband for seven days, was not happy with the £5.50 in compensation his provider TalkTalk offered him, especially as he had to contact them to make a claim.

"I find it incredible that TalkTalk does not automatically credit customers for total loss of service. As the network provider, they should have insurance in place to cover compensation payouts in these circumstances," said Mr. Walsh. THE ARCHER contacted TalkTalk but no one was available for comment.

### Call Crimestoppers

BT has a partnership with Crimestoppers, which offers up to £1,000 reward for information leading to arrests and subsequent convictions. People can call anonymously and free on 0800 555 111.

## ROBIN KIASHEK

BSc (Hons) Ost Med

### OSTEOPATHY in Fortis Green

including the Perrin Technique for Chronic Fatigue Syndrome/ME, (Western Medical) Acupuncture Nutrition, Life Coaching/NLP and Autogenic Training

52 Twyford Avenue  
Fortis Green  
London N2 9NL

020 8815 0979  
07956 213 759

[www.robinkiashek.co.uk](http://www.robinkiashek.co.uk)



## Planning Applications

### Barnet Council

38A Church Lane, N2

Extension to time limit for implementing planning permission F/00517/10, granted 9/4/2010, for first floor roof terrace to rear. This involves installation of privacy screening, and replacement of first-floor window with door and access steps.

### 33 Edmunds Walk, N2

Loft conversion, including three roof lights. Repositioning of first-floor rear access door. Internalising of external stair landing.

### 76 & 78 Hamilton Road, N2

Single-storey rear and side extension to both properties.

11-59 High Road, N2 (McDonald's Restaurants Ltd)

Replacing one double-sided sign on existing internally illuminated freestanding totem sign.

### Haringey Council

8 Shakespeare Gardens, N2

Single-storey flat-roofed rear extension.

### 40 Springcroft Avenue, N2

Single-storey rear/side extension.

## Piano Lessons

Jazz, blues, classical, rock

Also theory, keyboard harmony, improvisation, composition, arranging, song-writing, GCSE & A level music

James Drew-Edwards LTCL GTCL PGCE (music), CRB checked

[jamesdrewedwards@gmail.com](mailto:jamesdrewedwards@gmail.com) 020-8444 0655





# Stop parking restrictions killing our businesses, say traders

By Diana Cormack

Early last month a group of local traders welcomed Cllr Dean Cohen, Cabinet Member for the Environment, to a meeting about problems caused by parking restrictions and about possible solutions. It was organised by Peter Barnett of A. Scott and Son Fishmongers, who had canvassed all the businesses on the High Road and Fortis Green. Cllr Cohen said it was the largest attendance he had seen at such a meeting.



East Finchley traders discuss parking issues with Councillor Dean Cohen Photo by John Dearing

Everyone contributed keenly to the debate, many emphasising their loss of trade. Motorists no longer pop quickly into shops such as Josephine's Florist or Tony's Continental Store, whilst the Phoenix has lost customers because parking restrictions don't allow enough time to view a complete film.

There were calls for a period of free parking to ease the situation, but Cllr Cohen emphasised that this had not been in place previously and was not guaranteed to work, as had proved to be the case in other parts of the borough.

Many traders responded that all areas are not the same, so specific issues and needs should be taken into account when decisions are taken. If not, what would be the point of these meetings? Elliot Jacobs of UOE was forceful in requesting that

the council consulted with locals before any changes were made.

## Bus stop removal

A change to create more parking spaces by removing the bus stop outside Kokos was suggested. Buses using it stop only a short distance away in East End Road, the High Road and Fortis Green, then again at East Finchley station.

On the question of payment, Cllr Cohen ruled out the return of cash machines which are difficult to maintain and need paid staff to empty them. Credit or debit cards and mobile phones would be used.

A council official took notes and feedback from the meeting will be sent to the traders. Cllr Cohen said it would be approximately three months before any tariff changes came about and that new parking meters would be installed in less than a year.

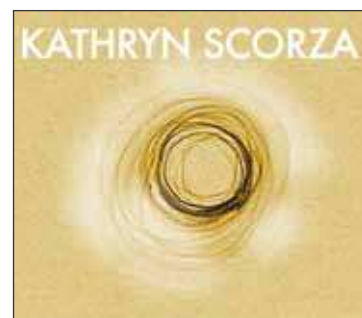
**KF COMPUTERS AND IMAGING**  
93 High Road, East Finchley, N2 8AG  
[www.KF-Computers.com](http://www.KF-Computers.com) / [www.LondonMobilePhone.co.uk](http://www.LondonMobilePhone.co.uk)

- LAPTOP/PC REPAIRS/SALES **FREE CHECKUP**
- MOBILE PHONE REPAIR/UNLOCKING **NO FIX NO FEE!**
- WEBSITE DESIGNING **£99 ONLY**
- WEDDING VIDEOS & PHOTOS **£499 ONLY**
- STUDIO PHOTOSHOOT **£49 ONLY**
- PHOTO PRINTING **6 ID PHOTOS £4.99 ONLY**

**02088159898**

## Fun day

**Martin Primary School holds its annual summer fun day on Saturday 15 June from 12 noon to 3pm. Pop along to the school in Plane Tree Walk to celebrate its centenary with barbecue food, tea and cakes, a bouncy castle, lots of stalls and fun for all the family.**



*Dissolving the blocks to self healing*

Kathryn Scorza  
Registered Hypnotherapist  
Soul Therapist  
and Spiritual Healer

tel: 07703 404 839  
email: [kathryn@kathrynskorza.co.uk](mailto:kathryn@kathrynskorza.co.uk)  
[www.kathrynskorza.co.uk](http://www.kathrynskorza.co.uk)

**HYPNOTHERAPY  
SOUL THERAPY  
SPIRITUAL HEALING**

Hypnotherapy offered for a wide range of issues  
excluding only  
weight loss and smoking cessation



Martin Stone serves up at the Muswell Hill Soup Kitchen

## Soup kitchen feeds homeless amid the affluence

By Daniel Weir

**Despite Muswell Hill being one of the most affluent areas in London, homelessness is a big, but often overlooked, problem.**

The Muswell Hill soup kitchen, founded in 1994, has been established to help some of the least fortunate people in our community. Crisis, the national charity for homeless people, estimate that rough sleeping has risen 43% in the last year in London.

The kitchen operates next to the Muswell Hill Baptist Church, just off the Broadway, and serves around 50 people each night. It was set up after many requests for food after evening church services.

These people mainly come from North London and are aided "by giving food, one-to-one advice, signposting to homeless agencies" and through "art, music and poetry" according to the centre's leader Martin Stone. The centre is open five days a week, from Sunday to Thursday with doors open for an hour from 7.45pm.

Martin himself got involved with the centre due to his role as a university lecturer on housing and economics, specialising in

homelessness.

### Year-long harvest

The food the guests receive comes from a local "friendly" butcher and they also receive food from supermarkets, especially Sainsbury's who donate cakes and bread weekly, as well as receiving donations from local restaurants.

They fundraise through street collections and collecting outside Sainsbury's. Last year they held a sponsored walk in a push for funds.

If you are interested in getting involved, the centre runs an art group, a craft group and a soup kitchen school for volunteers. You can also help by donating food for the centre. Donations always leap around Harvest Festival time, but are very welcome all year round.

The website is [www.mhbc.org.uk/community/soup-kitchen.html](http://www.mhbc.org.uk/community/soup-kitchen.html) and those interested in getting involved can email [soupkitchen@mhbc.org.uk](mailto:soupkitchen@mhbc.org.uk)



115 HIGH RD, EAST FINCHLEY  
020 8444 5630  
[WWW.EF-ELEC.CO.UK](http://WWW.EF-ELEC.CO.UK)

**CALL IN TO 115 HIGH ROAD FOR FRIENDLY  
ADVICE AND EVERYTHING YOU NEED TO KEEP  
COOL, SAFE AND SECURE THIS SUMMER.**



## Nicky Sharp Osteopathy Clinic

*Cranial and Structural Osteopathy  
and Acupuncture*

*All Major Insurers Accepted*

For consultations and appointments:

**Telephone: 020 8815 9433**

260 East End Road [www.nickysharposteopathy.co.uk](http://www.nickysharposteopathy.co.uk)  
London N2 8AU e-mail: [info@nickysharposteopathy.co.uk](mailto:info@nickysharposteopathy.co.uk)

## Josephines

EXPERTS IN CREATIVE FLORAL DESIGN

**For the freshest flowers around**

**Pop in and choose from the largest selection in the area**

**No excuses – to miss that special occasion**

[www.josephinesflowers.co.uk](http://www.josephinesflowers.co.uk)

Tel: 020 8444 9569/020 8883 3598

60 High Rd, East Finchley, London N2 9PN





Anya Winful (right) and gap year student Georgina Westbrook with the cakes. Photo by Diana Cormack

## Café in the park open in time for summer

By Diana Cormack

**The kiosk café in the park has re-opened for the summer. It is being run by Wendy Meteyard and Rochdi Rhazouani of The Emporium Tea Rooms, Cheapside, Fortis Green. Ice cream, hot and cold drinks and food are on sale, with much of the produce emanating from The Emporium.**

"We want to major on cakes," Wendy told The Archer. That will be no problem, judging by those on display. Interestingly, some of the most scrumptious are made by her 13-year-old daughter Anya Winful, who has enjoyed baking since her primary school days at Tetherdown when she used to make goodies for the produce stall at the school fair. Now a Year 8 pupil at Henrietta Barnett, Anya cooks at least once a week.

Anya has always helped her parents in the kitchen and was influenced by her grandmother in her love of cake making. But she isn't fond of plain baking; Anya likes "the complicated stuff" so cuts, fills and decorates her creations after they leave the oven.

### Social enterprise

Emporium has always had a fantastic community spirit about it. Soon after becoming manager, Rochdi was faced with the possibility of having to close the business and make staff redundant. He decided to set up a not-for-profit social enterprise, Rhazouani Community Interest Company, which now owns Emporium Tea Room and Gift Shop and runs the Cherry

Tree Wood kiosk.

Rhazouani CIC aims to support people with learning difficulties, as well as pupils with autism from TreeHouse School.

Rochdi and Wendy are both passionate community spirited people who are determined to keep both the kiosk and the tea room open to benefit the local community. Let's show them our support!

## My marathon was unforgettable

By Philip Halton

**I did it! After months of training and fundraising building up to the 2013 London Marathon, the day finally arrived, and it was a day that I will simply never forget.**

I had never been up so early on a Sunday, but I found myself in Greenwich on a glorious sunny morning for a pre-race photo with team Whizz-Kidz, with what must have been about 500 runners at the start point.

I was really excited about the day ahead, but slightly anxious too as I'd never attempted a marathon before and didn't really know what to expect. At 10am, off went the claxon. It took me about 10 minutes to walk to the start line as there were about 37,000 people taking part, so it was a bit of a squeeze, but once I'd crossed the start line I was buzzing with excitement!

There was a carnival atmosphere from start to finish, with so many people lining the streets to cheer on all the runners, bands playing – it was great to see!

After reaching the 20-mile point, I really started to feel the strain and at that point I knew I had 'hit the wall'; from then on every mile felt like 10! The crowd definitely gave me that extra lift and boost needed to cross the finish line. I managed to complete the marathon in 3 hours 53 minutes.

I want to say a massive thank-you to everyone who sponsored and supported me,



Philip Halton completes the 2013 London marathon  
Photo by Chris Halton

as it means a lot to me and to all the children at Whizz-Kidz. I managed to raise nearly £2,000 thanks to your generosity and it is very much appreciated.

For information about Whizz-Kidz, the charity for disabled children supported by Philip, visit [www.whizz-kidz.org.uk](http://www.whizz-kidz.org.uk)

## Don't stop the presses: Apple news

By Harriet Copperman

**East Finchley Abundance (EFA) was formed last year by local residents who wanted to highlight the amount of locally grown food that may be going to waste. As a small group it was decided to hold an apple event, where donated local apples were turned into fresh apple juice and handed to passers-by to taste.**

The event was very successful and another one is planned for this autumn. With more help and support, and better weather, it might be possible to hold similar events throughout the summer as the different ripening fruits, such as plums and cherries, become available.

We intend to hold regular meetings at 6.30pm on the second Monday of the month in the Old White Lion for those interested in getting involved. If people can't attend meetings, but would like to offer help the contact is [efabundance@btinternet.com](mailto:efabundance@btinternet.com).

## Where did our trees go?

By Margi McAlister

**On returning home from holiday in March, Tracy Gray discovered that a large number of mature trees and bushes next to Wardell Court in The Walks had been cut down. Her garden in Elmfield Road backs on to this now denuded piece of land and she is concerned that her garden wall is exposed and presents a security risk.**

She is also upset at the loss of so many trees as a host of birds nested in them and they were also home to squirrels.

Mrs Gray phoned Barnet Council to ask who had authorised the felling and why. They told her that Barnet Homes, which owns both Wardell Court and the land adjacent to the rear of her garden, had given the order but the council weren't able to give her a reason for it.

THE ARCHER contacted Barnet Homes who passed us back to the council where the environmental services

manager told us the felling was recommended by the council's tree section, that the trees were not included within a Tree Preservation Order, and that the site was not within a conservation area. They were removed because they posed a risk of damaging nearby walls.

Mrs Gray was perplexed at this explanation as she had never been consulted about possible danger to her garden wall and saw no evidence of a problem. She says it seems strange that they left the trees along her next-door neighbour's wall and another bush that leans into her garden.

**10% OFF**  
INSTORE  
WITH THIS  
ADVERT

**VINTAGE CLOTHING  
RETRO HOMEWARE  
HAND PRODUCED GIFTS  
GREETINGS CARDS**

**OPEN EVERY  
FRIDAY & SATURDAY  
10am-4pm**

**MARTIN SCHOOL**  
EAST FINCHLEY HIGH ROAD  
CHURCH LANE  
LEOPOLD RD  
LESLIE RD  
KING STREET

**King Street Mews / East Finchley N2 8DY**  
[aroominmyhouse.co.uk](http://aroominmyhouse.co.uk)

### All Saints' Church, Durham Road, East Finchley Church of England

Sunday masses at 8.00 a.m. and 10.00 a.m.  
Weekday masses at 10.00 a.m.  
(Refreshments are served after mass on Sunday and Thursday)

Prayer requests are gladly accepted.

The Parish has a flourishing social life.  
Contact the Vicar, Fr Christopher Hardy,  
on 020 8883 9315.

All Saints' also has a strong musical tradition and an enthusiastic choir of both adults and children.  
Experienced singers are always welcome.  
Contact Geoffrey Hanson on 020 8444 9214.

<http://www.allsaints-eastfinchley.org.uk>





## Fake Samaritan fails to con real thing

By Janet Maitland

**A man posing as a Samaritan got a shock when he tried to con money from a local man who is a genuine volunteer with the charity.**

Peter Gibson was returning home from a shift at the Samaritan office in Soho at about 10.30pm on 16 April when he was stopped, when going into the station car park, by a man who said he had just been mugged and needed money to get home.

When the man said he was a psychotherapist doing some work in Muswell Hill for the Samaritans, Mr Gibson was suspicious as he knew that there wasn't a branch there. The man then claimed to be doing outreach work for the Bounds Green office, but Mr Gibson knew this branch doesn't do outreach work.

"I offered to take him to the police to report the mugging," said Mr Gibson. "The man was then very rude and ran off." After phoning the police to report the incident, Mr Gibson drove his car out of the car park, passing the conman who was

now talking to another potential victim. I slowed down, hooted and waved my mobile phone at him," said Mr Gibson. "He ran off towards Cherry Tree Wood."

### Plausible liar

Mr Gibson was aware that a man posing as a Samaritan had been stealing money from people for about ten years. "Colleagues told me the man was plausible as he seems to have a working knowledge of the Samaritans," he said. "I wouldn't have known this man wasn't genuine if I hadn't been a real Samaritan. He's using our good name and playing on the fact that most people would be sympathetic. I would advise people to report him to the police if he approaches them."

The man is described as middle aged, casually dressed, of medium height and wearing glasses.



General Manager Martin Garner with the Pearly Family Photo - Sinead O'Kane

## Flag of St George flies high

By Diana Cormack

**When I was a teenager we moved to Wales, back to my father's birthplace. It may have been the Land of My Fathers, but my mother was a Geordie and I too was born in Newcastle upon Tyne. As an RAF family we lived in many different places and I attended several schools. So I moved from a stiff, traditional English South Wilts Grammar School for Girls to a mixed Llandeilo Grammar School where the Welsh Nationalist leader's children were pupils.**

I soon learned that being English did not make me particularly popular and having my accent mimicked or being spoken to in Welsh by people who knew I didn't understand was a common occurrence. With time, and the fact that I was quite naughty and the best shooter in the netball team, most of this faded. But the difference was highlighted every year on the first day of March.

St David's Day was celebrated with a school eisteddfod along with Welsh national dress, flags, daffodils and leeks aplenty. We had the afternoon off and returned the next day to classrooms filled with the lingering aroma of leeks. I wondered why St George's

Day wasn't made much of in England, so on April 23 I'm always on the look-out.

This year Budgens had a large knight in shining armour on display with suitably coloured roses and balloons around him. Tony's Continental Store put up a large St George flag (he is also the patron saint of Greece). The Windsor Castle had flags and bunting inside and The Bald Faced Stag had similar decora-

tions both inside and outside. The Stag also made a night of it, with typically English food and drink on sale plus two sets of Pearly Kings and Queens and a Pearly Prince. They provided the entertainment, singing traditional songs for people to join in and collecting for charity.

Were there were other places in East Finchley who commemorated the day, I wonder? And next year will more join in?

## Woman struck by bus

By Janet Maitland

**A woman was seriously injured when she was in collision with a 263 bus at the junction of Baronsmere Road and the High Road at about 8.30pm on 21 April.**

"CCTV footage shows that apparently the lady walked straight out in front of the bus," said a police spokesperson. "Thankfully she didn't go under it. She was taken by ambulance to a central London hospital.

Here the injuries were found to be to her face and were serious, but not life-threatening."

Baronsmere Road and the area round the bus were taped off to allow for police investigation. The roads reopened at 11.30pm.



### Alexander Technique

Improve your posture, health and performance

- Backache
- Neck/shoulder pain
- High blood pressure
- Poor posture
- Stress
- R.S.I.

"Of all the approaches tested, [...] Alexander Technique lessons proved to be the most beneficial." British Medical Journal 2008

0780 861 2510 ~ [info@adrianfarrell.co.uk](mailto:info@adrianfarrell.co.uk) ~ [www.adrianfarrell.co.uk](http://www.adrianfarrell.co.uk)

### A Local Handyman

available for general household & garden maintenance.

No Job Too Small  
Free Estimates  
Call John on: 0789 010 3831  
or: 020 8350 2188

### Greene Driving School

East Finchley N2

From **£17.50** x 2 Hr lessons

**Safe driving for life**

**Low Co2 footprint 114**

**Eco & Low Maint Tuition**

**Pass Plus 4 cheaper**

**Insurance.** [Greenedriving.co.uk](http://Greenedriving.co.uk)

Call John M.I.M.I  
0773 851 4406



### east finchley clinic

- Back Pain
- Neck Pain
- Whiplash Injury
- Sciatica
- Sports Injury
- Frozen Shoulder
- Arthritis
- Tennis Elbow
- Sprain or Strain
- Rehabilitation
- Neurological
- Stroke

**Wendy Longworth & Associates physiotherapy practice offers a variety of treatments at the clinic, or off-site, in patients homes, nursing homes, private hospitals and other organisations.**

[www.eastfinchleyclinic.co.uk](http://www.eastfinchleyclinic.co.uk)  
**020 8883 5888**  
2-3 Bedford Mews Bedford Road London N2 9DF

## Library volunteers

**Barnet Council is encouraging teenagers, aged 14 to 18 years, to volunteer at a local library during the summer holidays. The teenagers will be supporting children aged 4-11 taking part in this year's Summer Reading Book Challenge.**

To get an application form, email [justina.gore@barnet.gov.uk](mailto:justina.gore@barnet.gov.uk) or [lendahand@barnet.gov.uk](mailto:lendahand@barnet.gov.uk). Alternatively you can call Justina Gore on 07867 660 499. For more information on the Summer Book Challenge, log on to [www.readingagency.org.uk](http://www.readingagency.org.uk).

## Domestic Appliance Sales & Repairs

**No Callout Fee 020 8444 4303 No Callout Fee**  
[sales@ajlappliances.co.uk](mailto:sales@ajlappliances.co.uk) - [www.ajlappliances.co.uk](http://www.ajlappliances.co.uk)  
**Authorised Dealership for Bosch, Neff, Siemens, Miele & Liebherr**




### AJL

Most Brands Repaired  
Daily Time Slots  
Freestanding & Built In  
Fully Trained Service Technicians

**AJL Appliances Ltd**





### ALMAR BUSINESS SOLUTIONS

Accountancy | Payroll & Book-keeping | Tax services

**Business services:**

- Bookkeeping & Accounting
- Business planning
- Business start-up
- Company Secretarial
- Corporate tax planning
- eCommerce & Payment Solutions
- Payroll
- Service Charge Accounting
- VAT

**Personal services:**

- Personal tax planning
- Self assessment

**Specialist sectors:**

- Building profits
- Charities
- Owner directors
- Retail
- Sole traders

**Why choose us?**  
By providing high quality of service and not charge over the top fees, we retain the business and loyalty of our customers, as well as with many new ones through word of mouth. We also work with tax specialists, investor advisors and auditors to provide clients additional services where there is a need.

Call us for a FREE review of your requirements and to discuss best way forward, with no obligation.  
Tel: 07894 473309 or email: [info@AlmarBSL.co.uk](mailto:info@AlmarBSL.co.uk)

Visit our newly improved website with useful and topical information: [www.AlmarBSL.co.uk](http://www.AlmarBSL.co.uk)

Almar Business Solutions Limited is a registered company in England and Wales (registered number 04541322), holder of ACCA Practising Certificate with Association of Chartered Certified Accountants and has Professional Indemnity Cover for its business activities.

## LUNCH

**2 COURSES £6.95**

MONDAY - SATURDAY  
12:00 - 16:00

## mezem

111 High Road, N2 8AG  
**020 8883 5750**  
[www.mezem.co.uk](http://www.mezem.co.uk)

## DINNER

**2 COURSES £12.95**

EVERY DAY 16:00 - 23:00  
ALL DAY SUNDAY & BANK HOLIDAYS





## CPZ legal battle reaches climax

The two-year legal fight to overturn Barnet Council's parking charges for residents in controlled parking zones (CPZs) finally comes to trial at the High Court on 2 July.

The legal fight centres on the decision by Barnet Council in 2011 to increase parking charges by up to 300%, pushing the cost of a single visitor voucher to over £4, far higher than in comparable boroughs.

At the time, Barnet Council argued that the increases were necessary in order to help pay for bus passes and for road repairs across the borough but opponents argued that it was unfair, and unlawful, to load so much of these costs on CPZ residents when 90% of the borough's residents park for free at home and don't have to pay for visitors to park.

The legal action is being brought by East Finchley resident David Attfield and is being supported by the Barnet CPZ Action Group. Over the past two years it has raised awareness of the charges and the campaign has featured on TV, radio and in the press.

Late last year, half-day visit vouchers were introduced for

CPZ residents, nearly halving the cost of visitor parking for residents in East Finchley's one-hour CPZ area. However, even with this new cheaper voucher, Barnet residents face charges that are up to seven times higher than in the neighbouring Fortis Green CPZ in Haringey.

### Donations sought

Although David Attfield's legal team are acting under 'no win, no fee' agreements, he will be liable for Barnet's legal costs should he lose the action. Barnet CPZ Action are therefore urgently seeking donations to help meet these but point out that they hope to return the bulk of donations should the legal action be successful.

More information can be found and donations can be made online at the website [www.barnetcpz.blogspot.com](http://www.barnetcpz.blogspot.com). Donations can also be made by cheque made payable to Barnet CPZ Action and sent to 88 Summerlee Avenue, East Finchley, N2 9QH.

## A talking newspaper

Barnet Borough Talking Newspaper (BBTN) is a local charity that has been working for the visually impaired in Barnet for more than 35 years.

Teams of unpaid volunteers meet every week at its studio in Muswell Hill to read a selection of articles on a wide range of local topics from the Barnet newspapers, and record them onto CDs for free distribution to sight-impaired people in the borough.

The group's aim is to help those with visual impairment to keep up to date with what's going on in locally and to let them know about coming events and services. It uses free postal services to distribute the CDs but for all other expenses, such as electricity, stationery, maintenance, CDs and equipment, BBTN relies on the generosity of its Friends and other donors.

Do you have the time to help in any aspect of its work, perhaps on the technical side, as a producer or reader, or as part of the editorial or admin teams? Full training will be given. Could you act as a contact with our blind friends in your area or would you become a Friend?

For details on how to get involved please contact BBTN at: BBTN, The Studio, 11a Wetherill Road, London N10 2LS. Telephone 020 8883 8008 or email [BBTN@talktalk.net](mailto:BBTN@talktalk.net)



Children at Coldfall Primary School scale the heights of their new climbing wall. Photo by Josie Dobrin

## Teachers send pupils up the wall

Youngsters at Coldfall Primary School have been scaling new heights on a climbing wall recently installed in their playground. The school, in Coldfall Avenue, launched the wall with a special climbing-themed assembly celebrating the 60<sup>th</sup> anniversary of Edmund Hillary and Tenzing Norgay reaching the summit of Mount Everest in May 1953.

## Cyclists break out of town

The annual Suburban Breakout is back, brought to you by Central London CTC, and this year it's a "fairly easy" 100km blast into Hertfordshire.

"One or two little lumps, but you can go hard, or you can take it steady. Your speed overall must be above 15km/h, no more than 30km/h," says organiser Nick Bloom. "It's an ideal first event, and a good 'first on fixed'."

This is an audax, so it's about getting round under your own steam. You will have to follow the route sheet

and sort out any mechanicals. There are no timing chips, no gold medals, but there is a fine cup of coffee when you get back.

The start is at Barracuda, 118 High Road, N2, at 10am on Sunday 7 July. Find out more about entering at <http://bit.ly/XJthBr> or contact Nick on [nick@centrallondonctc.org.uk](mailto:nick@centrallondonctc.org.uk) or 07768 354010.

### Midhurst Butchers

Certified organic meat  
at reasonable prices  
Free-range poultry  
Home-made sausages  
(including Boerwors)

2 Midhurst Parade,  
Fortis Green, London N10  
Tel. 020 8883 5303

## Stealthy cops catch burglar red-handed

By Janet Maitland

A burglar was caught red-handed trying to steal from a garage in Summerlee Avenue. The man was spotted trying garage door handles as he walked along the alleyway behind the avenue at about 10.30am on 21 April.

A local resident called the police immediately and they arrived on the scene within minutes, making sure that they were as quiet as possible.

"The man had entered a garage and was about to make off with a bicycle and garden power tools when he was apprehended," said Sergeant Matt Cleve, of the Safer Neighbourhood Team. After a short chase on foot, the man was detained and arrested for burglary.



Nova Dental Care has a new dentist joining our practice

**Dr. Daniel Gonsalves BDS (Lond.)**

Call now to take advantage of these introductory offers:

**£35 CHECK-UP**

**£49 CHECK-UP AND CLEAN**

**£10 CHILD'S CHECK-UP**

email: [info@novadentalcare.co.uk](mailto:info@novadentalcare.co.uk)

260 East End Road, London N2 8AU  
020 8365 2365  
Fax: 020 8365 2665

### Human Resource Solutions Plus

Helping you to manage, train and develop your employees at a commercially sensible cost.

[www.hrsp.net](http://www.hrsp.net)

Richard Pell: [info@hrsp.net](mailto:info@hrsp.net) • PO Box 27013, London, N2 0WX

**HRSP**

### Holy Trinity Church Church Lane, East Finchley Church of England

*We're a warm and friendly congregation  
who look forward to welcoming you*

**Sunday Parish Communion at 10.00 am**

Children's Sunday Club ♦ Meet over coffee after church  
Michael Stanway is happy to answer any enquiries:

Tel: 020 8346 8591

[www.holytrinityeastfinchley.org.uk](http://www.holytrinityeastfinchley.org.uk)



**NHS CHECK-UPS £17.50**  
(this includes x-rays where necessary)

**NHS EXEMPT PATIENTS AND  
CHILDREN UNDER 18 ARE FREE**

**new NHS list now open**

member of the  
BDA and the BDHF



smile with confidence

**020 8444 3436**

144 The High Road, East Finchley, London N2 9ED  
[www.eastfinchleysmiles.co.uk](http://www.eastfinchleysmiles.co.uk)





The Guy's Trust team start digging for the new village school

## Foundations of hope for a village school in the foothills of Nepal

In our April issue, we reported on Vicky and Tony Joseph, of Southern Road, travelling to Nepal to help build a school in memory of their son Guy, who was killed in a paragliding accident aged 25. Here, Vicky describes their trip.

Guy's family and friends flew to Nepal to join the people of Dhikurpokhari, a village in the Annapurna foothills, to start building the first Guy Joseph Early Childhood Development Centre.

The impact of what we were doing really hit when I saw everyone together wearing their Guy's Trust T-shirts, the first of many moments of camaraderie and pride, although accompanied by a profound sadness.

As we clambered down the hillside it seemed that the

whole village had come out to greet us. Waiting for the local dignitaries to arrive, a small band struck up and the village children pulled us onto the makeshift dance floor.

After many thank-you speeches and a very moving minute's silence in memory of Guy, we went to bless the site and to break ground.

Then the hard work began! While the local women untiringly carried massive baskets of gravel strapped to their foreheads, we started to pickaxe and dig out the trench for the

foundations, passing the earth bowl by bowl down the hillside.

The arrival of the brick-making machine caused much excitement although with the brick team averaging one brick every fifteen minutes, the enthusiasm took a temporary nosedive when we discovered that we needed to make 8,000!

### Early education

There is a huge need for schools for younger children in Nepal, particularly for girls and the 'untouchable' dalit class. Despite the government's commitment to free education for all, at least one million children do not go to school. Each Guy Joseph school will provide for 150 children up to the age of seven preparing them for, and ensuring their entry into, primary school.

After a week of hard graft and with the trench complete it was time to say our farewells. At the closing ceremony there was no music or dancing because the local people were "sad to say goodbye". As I handed the memorial plaque with Guy's name to the team that will finish work on the school the tears flowed again, this time accompanied by an enormous sense of pride.

Visit [www.guystrust.org](http://www.guystrust.org) to find out more.

## A hole lot of digging going on

East Finchley's 'Big Dig' will be taking place on the weekend of 13 and 14 July and you can get involved. The weekend is all about discovering the history of East Finchley and is based on the Channel 4 Time Team archaeology programme approach.

People are being asked to dig a one metre square test pit in their garden and each square will be part of a mosaic that will help to build up a bigger picture of what was going on in the past.

The East Finchley Big Dig is being run by a partnership of the East Finchley Community Trust, Dig Where We Stand (a University College of London research project) and the Hendon and District Archaeological Society.

It follows on from the suc-

cessful test pits dug on Martin School playing field where a mysterious bunker was discovered.

A public meeting will be held at Martin Primary School between 6.30-7.30pm on Tuesday 25 June for anyone interested in taking part. In the meantime if you want to know more please contact Roger Chapman on 07855 304 488 or email [efbigdig@gmail.com](mailto:efbigdig@gmail.com) More information at: <http://eastfinchleybigdig.wordpress.com/>

## Local artists open their houses

East Finchley Open artists will be hosting their annual Open House weekends from 11am-6pm on July 6 and 7 and July 13 and 14, the 10<sup>th</sup> year this popular event has been staged.

This year, 45 local artists warmly welcome you, free of charge, to visit them to discuss, enjoy and perhaps buy their work. Artists' homes and studios set off exciting, innovative pieces and paintings in relaxed, informal settings.

A wide variety of original artwork is showcased in 12 houses and studios as well as other High Road venues. Ceramics, jewellery, painting, photography, textile design, sculpture and glasswork will all be on show.

Seven new members are showing their widely differ-

ing, exciting styles and techniques with the EFO for the first time. New this year is an EFO Art Trail which includes a range of East Finchley shops, eateries and the Phoenix Cinema housing a quirky and inventive 10<sup>th</sup> anniversary exhibit called 10x10. Look out for it along the N2 High Road!

You can link to EFO on Facebook, [www.facebook.com/eastfinchleyopen](http://www.facebook.com/eastfinchleyopen) or visit their website [www.eastfinchleyopen.org.uk](http://www.eastfinchleyopen.org.uk) for online maps of venues and artists and information about the EFO members.

## Stars at the Proms

The Proms at St Jude's music and literary festival in Hampstead Garden Suburb this summer will feature one of the world's greatest ensembles, The Sixteen, and Women's Prize for Fiction shortlisted author Kate Atkinson.

This is the 21<sup>st</sup> year of the festival, which runs from 22-30 June at Henrietta Barnett School and St Jude-on-the-Hill church. Other big names include bass-baritone Sir Willard White, violin virtuoso Charlie Siem, and renowned scientist Baroness Susan Greenfield.

"We have a programme to suit all tastes," said Proms spokesman Ron Finlay, "including free lunchtime recitals and concerts for kids."

The Festival raises funds for Toynbee Hall, to help socially excluded young people, and the North London Hospice, which cares for people with life-

limiting illnesses. Last year, the Proms was able to donate £50,000 to these good causes.

For the opening midday concert on 22 June, many of the Pandemonium Drummers will be reviving their ebullient performance from the 2012 Olympics, along with a choir of amazing volunteer games-makers.

Seven guided heritage walks in and around Hampstead Garden Suburb and the City are on offer too.

Online booking at [www.promsatstjudes.org.uk](http://www.promsatstjudes.org.uk). Telephone booking opens on June 5; call 020 3322 8123.

### ACCOUNTANTS FOR SMALL BUSINESS

At TaxAssist Accountants we specialise in supporting small businesses. We can help with:



TaxAssist Accountants  
The Accountants and Tax Service for Small Business

- Self Assessment Tax Returns
- Business Accounts
- Corporation Tax
- Bookkeeping and VAT
- Business Start-ups
- Company Formations
- Payroll and HR
- Help with Finance Raising

....and much more.

020 8883 5258

[www.taxassist.co.uk/eastfinchley](http://www.taxassist.co.uk/eastfinchley)



### brera gardens

- garden design
- maintenance
- hard landscaping
- irrigation systems
- soft landscaping
- East Finchley based
- indoor plants

Mob. 07939 557 934

Tel. 020 8920 3721

Email: [breragardens1@btinternet.com](mailto:breragardens1@btinternet.com)

### East Finchley Baptist Church

Just off the High Road in Creighton Avenue N2

Sunday Mornings at 10.30 am

For more information

please contact the Church Office

Tel: 8883 1544 (Minister: Simon Dyke)

Visitors always welcome

### Japanese Acupuncture & Moxibustion

Gentle, dynamic & effective.  
Treating a wide range of conditions.  
[www.fionahurlock.com](http://www.fionahurlock.com)

FREE 20min consultation

Fiona Hurlock

Ph 07795 203107

UTOPIA 1a Leicester Mews, N2 9EJ

### Klages Plumbing & Heating Agency LTD.

CONTACT TELEPHONE No: 020 8346 7218 / 8636

**KLAGE**

A NAME IN PLUMBING FOR OVER 40 YEARS





# What's Father's Day all about?

By Diana Cormack

**Mother's Day in this country is always on the third Sunday before Easter. It comes from a very old British tradition connected with the church and its correct name is Mothering Sunday. Father's Day is always on the third Sunday in June. It is only just over a hundred years old but also has some connection with the church.**

Like many of our newer special days, it began in the United States of America. Twenty seven year old Sonora Louise Smart Dodds was in church listening to a sermon on Mother's Day (which they have in May). A mother herself, she wondered why there was no special day to honour fathers. Her father, a farmer and civil war veteran, had brought up his six children alone after their mother died. Being the eldest and the only girl, Sonora had helped him and knew how hard he had worked.

She talked to local people about it and, just one year later, her hometown of Spokane in the state of Washington celebrated the very first Father's Day. That was in 1910 and Sonora chose 19 June because it was her father's birthday. In 1924 the US President Calvin Coolidge proclaimed the third Sunday in June as Father's Day. It gradually became popular in the USA and Sonora saw it become a permanent national day six years before her death in 1978. By then this day devoted to dads had spread to other countries, including Great Britain, where it is now a tradition. This year Father's Day is on Sunday 16 June.

## Father's Day quiz: Can you name the fathers?

1. His eldest son is called Brooklyn.
2. A prince with a baby due in July.
3. He is also known as Saint Nick.
4. His son was a puppet called Pinocchio.
5. This animal is the father of a lamb.
6. He shot an arrow into an apple on his son's head.
7. He appears around New Year.
8. Father of the Greek gods.

Answers:  
1. David Beckham. 2. Prince William. 3. Father Christmas. 4. Geppetto. 5. A ram. 6. William Tell. 7. Old Father Time. 8. Zeus.

# Voices of the valleys

**Anyone interested in enjoying an evening of songs from stage and screen is warmly invited to hear the Three Valleys Male Voice Choir at 7.30pm on Saturday 8 June at St James's Church, Muswell Hill, with all proceeds going to the North London Hospice.**

Tickets are £15, £12 concessions and £5 for children under 16. They can be obtained from Peter Kraushar (020 8883 4736), from the Hospice shops in Muswell Hill and East Finchley or from the bookshop at St James Church.

## A friendly welcome awaits you

# EAST FINCHLEY METHODIST CHURCH

**197 High Road, London N2 (opp. Creighton Ave.)**

**tel: 0208 346 1700**

**[www.eastfinchleymethodist.org.uk](http://www.eastfinchleymethodist.org.uk)**

***Sunday service at 10.30 a.m.  
With Crèche and Young Church***

**Worship      Music      Social events      Wheelchair friendly**  
e-mail: [info@eastfinchleymethodist.org.uk](mailto:info@eastfinchleymethodist.org.uk)      Room hire tel: 020 8444 9887

## Learn Circus Skills

Trapeze, tightwire, acrobatics, juggling & more!  
**Classes and workshops in East Finchley**  
for young people, adults & groups

**www.AirborneCircus.com**

**020 8123 6261**

**Naomi Burgess** MSc Ed Psych CPsychol AFBPsS

**Examination anxiety? Brain freeze? Revision overwhelm?**  
**Do you want to write more coherently?**

**Experienced Educational Psychologist – works with children and adults**

call Naomi on: 020 8444 1594 or go to: [www.naomiburgess.com](http://www.naomiburgess.com)

# YOUNG ARCHER



*These young frogs got into theatre with Full Circle*

# Summer stage workshop

**Full Circle Theatre Club is running another of its popular one-week summer workshops for anyone who loves to act, dance or entertain.**

Children can learn several big-show dance numbers as well as act out scenes and sketches from various shows, working towards a performance on the last day.

The summer school takes place from Monday 29 July to Friday 2 August at Manorside School, Squires Lane, N3, from 10am to 3pm each day, and the cost is £75. To book a place or for further details contact: Anne-Marie Conway on 07958

409863.

Full Circle is a well-established theatre company run by three qualified and highly experienced teachers. Its next show is Hackback, a madcap

computer caper, at Finchley Youth Theatre, High Road, for three evening performances from 14-16 June. Tickets cost £8 and can be bought from Anne-Marie on the number above.

## PARENT & BABY/ CHILD ACTIVITIES

- ③ **Baby & U baby massage.** Contact Ruth at [babymassagewithruth@gmail.com](mailto:babymassagewithruth@gmail.com), [www.facebook.com/baby-andubabymassage](http://www.facebook.com/baby-andubabymassage)
- ③ **Bringing up Baby.** Screenings of the latest films for parents with babies. Phoenix Cinema. Wednesdays 11am. Box office 020 8444 6789.
- ③ **Dads' Club:** Get-togethers for dads looking after young children in East Finchley. Adam 07957 441435.
- ③ **EF National Childbirth Trust** contact Ruby Yang or Patrizia Canwell at east-finchleyncnt@googlemail.com
- ③ **Newstead Parent & Toddler Group,** Thurs 9-12-30, Green Man Ctr. Sajni 8359 3460.
- ③ **Parent & Toddler Group,** Green Man Centre, Julia 8444 2276
- ③ **Phoenix Cinema activities,** Bringing up baby screenings, Weds, 11am; Kids Club, Sat, 12pm; Toddler Time, Tues, 11am. Full details from box office on 020 8444 6789.
- ③ **Stepping Stones,** interactive play session for under 3s. Karen 07957 278860.
- ③ **Teddy Bears' Music,** singing for 0-3s in Holy Trinity Church, N2; Thursdays 9.45am & 10.45am. Liz 07836 284538.



*Dominik with St Theresa's head and deputy head, Ed Packshaw and the tiger. Photo by Jack Paget*

# Ed rides out to save the tiger

By Lisa Omar

**Conservationist Ed Packshaw visited St Theresa's Catholic Primary School to enlighten pupils about his conservation work with Saving the Bengali Tigers before starting a cycle rickshaw across a 400km stretch of southern Bangladesh, over six gruelling, 70km days to raise money for his charity WildTeam ([www.wild-team.org](http://www.wild-team.org)).**

He showed the children pictures of the different types of tigers and gave a fascinating talk about the threat from poachers.





## Where the wild things were

By Harriet Connides

I blame my dad for my love of history, including its more macabre side. One of my first memories, aged about seven, is going 'up to town' on a Saturday morning jaunt to visit the soon-to-be-redeveloped Mitre Square, where Jack the Ripper struck down one of his victims!

Now, one of the things that inspires me to want to write, paint and take photographs is the incredible, inspiring hidden historical palimpsest of the land that constitutes the area of East Finchley. As a child, I loved reading tales of villains and highwaymen. Looking for the tiny bits of Finchley Common that still exist has led me as an adult to roam Rough Lots and Cold-fall Wood, but it's difficult to imagine that East Finchley was once known as a godless, wild place, perched on the edge of the notoriously dangerous and lonely Common. Until the 1790s, a gibbet displayed its gruesome burden on what is now the junction of Bedford Road and the Great North Road, and bare-knuckle fights took place at the Five Bells until well into the 19th century.

After his third escape from Newgate Prison, the young house-breaker, Jack Sheppard, fled out of London to the countryside, and legend says he was captured after hiding in a haystack in Finchley, then held under arrest at the George Inn, in the Hog Market, now Market Place.

## What Remains of the Common

By Harriet Connides

The dark, sodden heart of Finchley

Between mud and dripping branches;

The lair of limping, mangy foxes.

A playground for the green woodpecker

and Dusty, the cemetery cat.

Graves totter, stones sway and crumble where,

not so many years ago,

the fields of Horseshoe Farm

hung, lush, behind the Great North Road.

Up on the High Toby, past the ugly burden of gibbet,

over the Common, broom and oak, mildew and groundsel;

Past the market gardens and fields of stacked hay,

to where Jack Sheppard half-heartedly hid, before his captive pint at

The George,

Over the ghost of the future North Circular.

'Vintage Tea Party & Gift Fair' presents  
**Made & Found**  
SAT 22.06.13 / 12-5.30pm / FREE ENTRY

VINTAGE CLOTHING  
HOMEWARE  
JEWELLERY  
HAND MADE SOFT FURNISHINGS  
GIFTS  
TEA, CAKE & BAR

THE BOOGALOO  
312 ARCHWAY ROAD  
NEAR HIGHGATE TUBE

### TELEPHONE FAULTS REPAIRED

50% CHEAPER THAN BT \* the POST OFFICE \* TALK TALK etc  
HOME \* OFFICE \* FACTORY  
LINES \* EXTENSIONS \* EQUIPMENT - TESTED & REPAIRED

Call RON COLLINS 0208 883 9325 \* 07748 278728  
email: [roncallsaver@yahoo.co.uk](mailto:roncallsaver@yahoo.co.uk)

## Going Abroad?

We provide vaccinations, Malaria medication,  
and Travel Advice for your destination

**CW Andrew Pharmacy**

32 High Road N2 Tel: 020 8883 1559  
Opposite East Finchley Underground



Totteridge Academy Clear-up - Clearly benefitting the community

## Load of rubbish

Greater London Hire, based in the High Road, supported Totteridge Academy with a community clean-up on Monday 8 April. A group of nearly 40 students, teachers, governors and GLH staff came together for a huge litter pick on the academy grounds and in the local community. GLH provided a hearty and needed lunch and refreshments for the hardworking volunteers.

## Ally Pally's big birthday

Put Sunday 21 July in your diary for the big community celebration to honour Alexandra Park's 150th anniversary. There will be an exciting line-up of free family activities and entertainment from 11am - 4pm.

According to Duncan Wilson, chief executive of Alexandra Park and Palace Charitable Trust, the "jam-packed programme", to be released soon, will include activities reflecting the park's vibrant and eclectic past, featuring local community groups, entertainers and businesses. It's easy to forget some of the more memorable aspects of the Park's history since its opening in 1863: a miniature Japanese village, hot air balloon rides, a band stand, a diving pavilion, the frying pan-shaped horse-racing course, and a permanent Park circus, not forgetting what's still there, such as the deer park, boating lake and unparalleled views of London.

## Seen and heard

An ambulance had transported a deceased person to Co-operative Funeral Care at 133 High Road. The attendants came out to find that a traffic warden had given the vehicle a penalty notice. This is being appealed.

**Qualified Nail Technician**  
wanted  
for part-time vacancy at  
**Healthy Glow**  
East Finchley  
Please call Elli on  
07932 059 622

## A real bikers' breakfast

By Curtis Sweetingham and Lisa Omar

There was a great buzz of excitement from the children of St. Theresa's Catholic Primary School when all pupils from Reception to Year 6 were encouraged to cycle to school for a bikers' breakfast.

The children locked their bikes up at the school cycle storage unit and then proceeded into the school hall where everyone received a free cold or cooked breakfast, washed down with fresh fruit juice.

Other initiatives that have taken place at St Theresa's over the past year to improve safe and sustainable travel include a Year 1 and Year 2 theatre workshop on sustainable travel, a Reception road-awareness workshop, a Year 4 road safety course, Year 1 and 2 scooter proficiency and Year 6 Bikeability training.

## KALASHNIKOV KULTUR

By Ricky Savage, the voice of social irresponsibility

## Wagnerian overkill

As helicopter gunships zoom in low across the surf and the smell of napalm wafts up into the sky you just know what music will be blasting out of the speakers. Yes, it's 'Ride of the Valkyries' time as everything gets dark and Wagnerian. And, why not, it's the 200th anniversary of his birth.

Time to cue the cod fascism and the over-the-top world of the nine-hour opera. Time to wallow in the weird world of mad King Ludwig, castles on the Rhine and Bavarian overkill. Time to get it completely wrong and blame everything the Third Reich stood for on Wilhelm Richard Wagner.

Someone, somewhere will do exactly that. As a composer, Wagner was something special. He wrote both the words and the music for his operas and set out to create a form of music drama that fused music, words and dramatic elements to create something new. The orchestra was as important as the singers. The Ring Cycle, all 16 hours of it, was the peak of his ambition and its mixture of old Germanic and Norse legends, music and drama has the same effect as being hit by an intergalactic chariot.

And then there is Wagner the man. And there's where the problems start because he was opinionated, self obsessed and the kind of man who would try to seduce your wife and borrow money from you. Neither of which you could be certain of getting back. He managed to help bankrupt Bavaria, happily taking all he could from the less than sane King Ludwig, even getting him to help fund the Bayreuth Festival.

Next we come to the big problem, his anti-Semitism and his adoption by the Nazis. The first you can blame him for. He might have had Jewish friends, but his vision of Germany wasn't multicultural. The Nazis are a different matter.

Wagner died in 1883, Hitler first turned up at the Bayreuth Festival in 1923. Wagner's widow Cosima may have been a fairly nasty piece of work and some of his descendants might have been happy with Hitler, but you can't blame Wagner for the fact that the Nazis played pick and mix with the music to suit themselves. It's like blaming Paul Weller for the ConDems just because David Cameron likes Eton Rifles. Why not listen to the music and make up your own mind; just watch out for the Valkyries.





## Regular Events

### Sport & Fitness

- **Badminton** Weds eves 8-10pm all abilities, contact George 8349 0170 or John 8444 7163.
- **East Finchley Flyers running club**, Tuesdays 7pm at the tube station, 7k run and socialising. Nick 07795 503752.
- **Finchley & Hornsey Ramblers Group** Call Vivien 8883 8190
- **Glebelands Indoor Bowls Club**, Summers Lane N12. New and experienced bowlers welcome.
- **Keep fit for the Retired** on Wednesdays, Christ Church N12. Call Bridie 8883 5269
- **Muswell Hill Bowling Club**, Kings Ave, N10. New & experienced bowlers welcome. Tel: 8883 0433.
- **Pilates** in East Finchley, qualified teacher. Contact Dee on 8883 7029
- **Pilates class** Weds 3.30 & 7pm at Ann Owens Ctr, N2. Call Penny 8444 2882.
- **Pilates Beginners Classes** Tue 9.30-10.30am, Holy Trinity Church Hall. Michelle 07767 804 564
- **Tae Kwon Do** for children & adults at Finchley Lido Mon & Fri 7-9pm 07949 612 706. [www.taekwondo-uktd.co.uk](http://www.taekwondo-uktd.co.uk)
- **Tai Chi** class at EF Methodist Ch, Weds 1pm. James 8883 3308 or james@taiji.co.uk
- **Tennis club** with four clay courts off Southern Road. Call 8883 7723.
- **Yoga, breathing & relaxation**. Weekly drop-in classes - N3, N6, N10. Phone Judy on 07956 375607.
- **Yoga**, pregnancy yoga, meditation classes. Call Sunnah 07941 321 772 [www.stretchingpeople.co.uk](http://www.stretchingpeople.co.uk).

### Music, Dance & Creative Arts

- **Art Classes**. Call Henry on 8888 5133.
- **Ballroom Dance Classes**, Wednesday eves for beginners & improvers. St Mary's Church Hall, N3. 8444 0280.
- **Ballroom & Latin American Dance Classes** - beginners & improvers. Wed & Fri eve, Bishop Douglass Sch. 8207 2323.
- **Creative writing classes** in informal, friendly atmosphere. Tel Sallie Rose 020 8444 7217.
- **East Finchley Writers Group**, Weds at the Old White Lion. Contact Carola 8883 5808 or Lilian 8444 1793.
- **East Finchley Poetry Writing Workshops**. Monthly on Saturdays. Contact Dennis Evans 8346 9528.
- **Ladies Keep Fit** Class for over 50s. Tues 10.30-11.30am at Tetherdown Hall. Sheila 8444 0084.
- **Memory Lane Singing Club** - friendly singing club meets every Friday in Finchley. Call Valerie 8458 4508.
- **Over 50s Tea Dance** at Christ Church, North Finchley. Every Weds, 1pm. 020 8444 0280.
- **Learn to sing** at Finchley Methodist Church, Ballards La. Call 8888 4412.
- **Symphonic Wind Orchestra** Contact Caroline Egan 8340 2706
- **Traditional music** at TOC, Highgate Hill on 1st & 3rd Tue each month from 8.30 pm. Free. All musicians welcome. 07958 282898.

### Clubs & Social

- **Bingo evening**, 8pm Sundays, at the Constitutional Club, The Walks, N2.
- **Bingo Club** Mondays 7-9 pm, Green Man Centre, Contact: Jan 8815 5452
- **Contact Lunch Club** Tuesdays at the Green Man. Call 8444 1162 to book.
- **French conversation** in small friendly group with native speaker. 8444 9395.
- **Friends of Cherry Tree Wood** [www.cherrytreewood.co.uk](http://www.cherrytreewood.co.uk) or 8883 7544.
- **Haringey Recorded Music Society** informal meetings locally. Call David Moldon on 8361 1696.
- **LGBT?** 1st Weds every month in a local pub. Welcoming atmosphere. Email [efinchleylgbt@hotmail.com](mailto:efinchleylgbt@hotmail.com)
- **Muslim Ladies Lunch Club** 1st & 3rd Weds, Ann Owen Ctr., Oak La. Call 8432 1415 to book.
- **North London Bridge Club**, Muswell Hill. Contact 8348 3495
- **Northside Bridge Club**, EF Methodist Church, Thurs 7.30-11pm. 8346 8145.
- **Jewish Friendship Club** for over 60s, Tues 1-3 pm at Muswell Hill Synagogue, Tetherdown. Anita 8886 6140.
- **Muswell Hill Tetherdown Bridge**, contact 8883 4390

## Folk club first

Hill Country Folk, a new folk club in Muswell Hill, held its first session in Birchwood Hall early in April. Packed with over 100 people who came to hear and join in with local amateur singers, bands and guest acts, the hall had been transformed into a cosy, inviting and intimate space.



Strings attached: Folk music at the Hill Country Folk Club

Hill Country Folk is organised by a group enthusiastic about informal live performance and with broad tastes in folk and country music.

"Our aim is to have a good time and make a contribution to a good local cause," said Wendy Sykes, one of the organisers. The good cause on this occasion was Ambitious About Autism, a national charity founded in 1997 in partnership with Tree-House School in Muswell Hill, which provides services and specialist education for children with autism.

"Everyone who performed

brought something special to the night, and how heart warming to have folk music across the generations celebrated like that," said Jane Conway, a local supporter.

### Varied line-up

The attentive audience clapped and whistled their appreciation of traditional and modern songs and music and original compositions performed by: The Highgate Sessioneers, who first played together in 1985; The Coach House Company, a group of young music students; Kevin Murphy, a local singer and

guitar player pleased to be playing in the place where his children attended play group; The New Floors, a local 'Dad' band who play in a variety of musical styles; brother and sister Ben and Caitlin (with friend Toby); Lily and Meg, an alternative folk duo currently based in Cornwall; singer/song writer Isaac Lee Kronick with sister Tilly; and Americana musicians Good Clean Fun.

The next folk night is coming up soon. Contact Wendy for further details on [wendysykes@btconnect.com](mailto:wendysykes@btconnect.com)

## Musical medley in Mill Hill

A music festival has been running on our doorstep every alternate summer for the past 18 years and it's back in 2013 with a programme of performers that offers something for everyone.

The Mill Hill Music Festival runs from Saturday 15 to Saturday 22 June at pubs, churches and golf clubs around Mill Hill, as well as the new Allianz Park stadium at Barnet Cophall.

First out of the starting blocks is the Holbrooke String Quartet with a programme of romantic and early 20<sup>th</sup> century pieces. Tickets for this concert include a glass of wine or a soft drink.

Other events include rockers Alan Warner's All Stars, 1920s jazz 10-piece the Vo-de-o-do Orchestra, OperaUpClose performing La Boheme, and jazz singer Tina May with the Robin Aspland Trio.

The festival's closing night concert at Allianz Park features a homecoming gig by The Polecats rockabilly band, who started life in Mill Hill in the late 1970s.

Find details of the festival programme plus booking details at [www.millhillmusicfest.co.uk](http://www.millhillmusicfest.co.uk), by phoning Daniel Bleich on 020 8420 6594 or by emailing [enquiries@millhillmusicfest.co.uk](mailto:enquiries@millhillmusicfest.co.uk)

## What's On...

E-mail your listings to: [the-archer@lineone.net](mailto:the-archer@lineone.net)

### Until Tuesday 25 June

- **Art exhibition** at the Clissold Arms, Fortis Green; drawings by Raphael Prais.

### Until Sunday 30 June

- The fringe premiere of **Avenue Q, The Musical**, Upstairs at the Gatehouse, Highgate. Times and booking details at [www.upstairsatthegatehouse.com](http://www.upstairsatthegatehouse.com) or 020 8340 3488.

### Saturday 8 June

- **Hampstead Garden Suburb Horticultural Society's 275th Flower Show**, 3pm to 5.30pm. Traditional displays of fruit, veg, flowers and cookery, children's fancy dress competition and adults' fancy hats competition (entry details 020 8455 8741), home-made teas. Entry free for members, non-members £2.

- **Three Valleys Male Voice Choir** performs music from the stage and screen, including The Lion King, Les Miserables, Oliver and The Beatles, in aid of North London Hospice; St James's Church, Muswell Hill, N10 3DB. Tickets £15 (£12 concessions and £5 under-16s) include refreshments and are available from North London Hospice shops in East Finchley and Muswell Hill or from Peter Krausher on 020 8883 4736 and [peterkrau@aol.com](mailto:peterkrau@aol.com)

### Saturday 8 and Sunday 9 June

- **Open Garden Squares Weekend at Long Lane Pasture**, Long Lane, Finchley, access opposite Fire Station. The Pasture welcomes visitors taking part in this popular London Parks and Gardens Trust event. We will have a sale of 'plants for wildlife'. Visit [www.longlanepasture.org](http://www.longlanepasture.org)

### Sunday 9 June

- **Free music concert at East Finchley Methodist Church**; Tom Klidzia (violin), Inge Kjemtrup (viola), Elizabeth Nevrla (cello), Jill Anderson (clarinet), Paddy Clements (horn), Anna Lightbown (piano) play Dohnanyi's Sextet in C, opus 37,

and Vaughan Williams' Quintet in D. Free admission with collection in aid of Noah's Ark Children's Hospice, East Finchley Methodist Church, High Road., (opposite Creighton Avenue). Venue fully accessible to people with disabilities.

- Avenue House, East End Road, N3. **Avenue House market**. 10am to 4pm. Entrance free.

### Wednesday 12 June

- **Walk with Finchley and Hornsey's Ramblers Association** group for 5 ½ miles through three London parks and Little Venice, ending Camden Town market. Meet Green Park tube station at 10.30am and bring a small snack. Leaders Vivien and Tony Mallindine on 020 8883 8190. Newcomers welcome. Free.

### Saturday 15 June

- Avenue House, East End Road, N3. **North London Artisan Market**. 10am to 2pm. Entrance free.

- **Centenary Summer Fun Day at Martin Primary School**, Plane Tree Walk, 12pm to 3pm. Celebrate 100 years of Martin Primary School with a BBQ, teas and cakes, bouncy castle, lots of stalls and fun for all the family.

- **The Fair in the Square** will be held in Pond Square, Highgate Village, 12.30pm to 5.30pm. Everyone is invited to enjoy this annual event with live music, children's activities, 150 stalls and entertainment for all. More information at [www.fairinthesquare.co.uk](http://www.fairinthesquare.co.uk)

### Saturday 15 June to Saturday 22 June

- **Mill Hill Music Festival**; various artists and events at venues around Mill Hill, includes opera, jazz, Jewish music and rockabilly. Full programme and booking details at [www.millhillmusicfest.co.uk](http://www.millhillmusicfest.co.uk)
- **Spike Milligan Statue Fund Quiz Night**. 7.30pm for 8pm start. Tickets £5, with nibbles and coffee provided. (Bring your

own wine and nibbles if you wish). To book, and for details of venue, contact Derek or Barbara Warren on 020 8346 5258.

### Sunday 16 June

- Garden open in aid of the National Gardens Scheme (Yellow Book) for **National Gardens Weekend**: 48 Erskine Hill, NW11 6HG. £3.50 (children free). Self-service refreshments.

### Saturday 15 and Sunday 16 June

- **UCL Drama Society performs A Midsummer Night's Dream** in the Bothy Gardens, Avenue House, East End Road, N3. Details, information and tickets via 020 8346 7812 or [info@avenuehouse.org.uk](mailto:info@avenuehouse.org.uk).

### Saturday 22 to Sunday 30 June

- **Proms at St Jude's**, Hampstead Garden Suburb. Full programme of top-class music and literary guests, including The Sixteen, Willard White and author Kate Atkinson. Full details at [www.promsatstjudes.org.uk](http://www.promsatstjudes.org.uk)

### Saturday 22 June

- **St Theresa's Catholic Primary School summer fair**, East End Road, N3 from 12 noon to 3pm. Loads of fun, entertainment and food for everyone. Come along and join in.

- **Medicinal plant walk in Coldfall Wood** with Krishna Ramamurthy, local herbalist. Meet middle entrance on Creighton Avenue, 2 pm. Free but £3 donation appreciated. [www.coldfallwoods.co.uk](http://www.coldfallwoods.co.uk)

### Sunday 23 June

- **Open Gardens Extravaganza** jointly in aid of The North London Hospice and Hampstead Garden Suburb Horticultural Society. 10+ attractive Suburb gardens open 1pm to 6pm. £7.50 (children free). Tickets and maps available from 12 noon at Fellowship House, Willifield Way (opposite the Green), NW11. Also at Fellowship House: Teas (in aid of both organisations), plus two specialist nurseries selling plants from 12 noon.

Details: [www.hortsoc.co.uk](http://www.hortsoc.co.uk); 020 8455 0455.

### Thursday 27 June

- **Annual General Meeting of The Finchley Society**. 8pm at Avenue House, East End Road, N3 3QE. Non-members welcome, with admission charge of £2.00.

### Saturday 29 June

- **Holy Trinity Primary School's Summer Fair**, Eagans Close, from 12.30pm to 2pm. Come along for lots of family fun, stalls, games and delicious food.

- **Brookland Infant and Nursery School Summer Fair**, Hill Top, NW11 from 12-5pm. Stalls, games, international buffet and lots of family fun.

### Sunday 30 June

- **The Battle of Barnet: guided walk** with City of London guide Paul Baker. Meet at junction of Great North Road and Hadley Green Road at 2.30pm. Step back in time and explore the famous Wars of the Roses battlefield of 1471. More details from Paul on 020 8440 6805 or [www.barnetwalks.talktalk.net](http://www.barnetwalks.talktalk.net)

### Saturday 6 July

- **Open Day at the Constitutional Club**, The Walks, N2.

### Saturday 6 and Sunday 7 July

- **East Finchley Open Artists' Open House Weekends** from 11am-6pm; landmark 10th Open House Weekend has 45 local artists who warmly welcome you, free, to visit them and see exciting, innovative pieces and paintings in informal settings. [www.facebook.com/eastfinchleyopen](http://www.facebook.com/eastfinchleyopen) or visit [www.eastfinchleyopen.org.uk](http://www.eastfinchleyopen.org.uk) for online maps of venues and artists.

### Open gardens in June:

Sunday 9 June, 2pm to 5.30pm, 66 Abbots Gardens, N2; Sunday 16 June, 2pm to 6pm, 79 Church Lane, N2, and 22 Trinity Road, N2. In aid of the National Garden Scheme [www.ngs.org.uk](http://www.ngs.org.uk)





## Letters to the editor...



The Smith family and friend Joan Gentle at the Lido in 1935

## Memories from Australia

Dear Editor,

I often receive *THE ARCHER* via my cousin who lived in East Finchley and now is in Australia. My family lived in East Finchley, Church End and North Finchley.

It is interesting to read of some of my places mentioned. At one time Avenue House where as kids we played on the swings and giant-strides and we were convinced we could smell INK from Inky Stephens' house.

On another occasion Manorside School gave a display of eurythmics dancing and I recall we were in Greek costume, bare foot and pranced out from behind the trees to Miss Makin's piano.

The Lido was mentioned and I gather it was what we called the Olympic Baths. Hot holidays spent by the pools. First the baby pool where we young ones were given swimming lessons and then the fountain, sitting on the side enjoying the cool splash.

The 'Rough Lots' as we knew it was walked every day to and fro, noon and home time. Blackberry eating in summer, sliding on slippery ice in winter, not forgetting 'Rough Lot Liz': we had visions of a mysterious being living there. I read an article in which the London people would make their way to the Common to get away from the plague.

So, as you can see, a trip down Memory Lane from Australia, when I receive *THE ARCHER*.

Yours sincerely,  
Eileen McKelligel, nee Smith  
Cleveland, Australia

## On the death of Margaret Thatcher

Dear Editor,

Following the deaths of my dearly loved wife Laura and of my great friend and ally Rudi Vis, who succeeded Margaret Thatcher as MP for Finchley, I am the last person who would wish to be uncharitable towards the bereaved. I therefore extend to the family of Margaret Thatcher and to her friends, political and personal, my sympathies over their loss. I have greatly appreciated similar support given to me in my own predicament.

I was born during the Second World War and grew up under the reforming government of Clement Attlee, the seminal reports of the Liberal William Beveridge and the gentle conservatism of Rab Butler and Harold Macmillan. In the immediate post-war period, we faced considerable austerity: ration books for food, hand-me-down clothes, patched jackets and trousers, with darned socks.

We were, however, given hope about what was to happen in society, a hope that materialised in great benefits for me personally and for others: direct help with education, health, housing and local services. I therefore wished such help to be maintained and extended to the next generation and that is why I chose and was chosen to be Margaret Thatcher's opponent.

Margaret Thatcher and I rarely met, but there were occasions in East Finchley when she had agreed to open a new development in housing or in another area of provision in Barnet. At these times, I was greatly impressed by her grasp of detail which extended down from her performance at Westminster to her knowledge of her own constituency.

Although I could only be described as a minor personage, she always knew my name and what I had been doing. She was always polite and civil towards me, despite the fact that she was well aware of my almost total opposition to the policies in which she was engaged.

The only time when she showed mild irritation towards me was at the declaration of the result in the Finchley constituency. The wilder elements of my support chose to chant at her: "Fascistscum". I shared her annoyance at this outburst. She was not a fascist nor was she scum.

Any matter that I raised with her received a full reply. However, in my view, Margaret Thatcher's policies were generally misguided and divisive. The effects of what she initiated can still be seen today, aided by subsequent timorous Conservative and Labour governments who chose to accept them: a greedy, rampant financial sector, lack of decent housing provision, nuclear proliferation overseas, messy and ineffective education systems, increasingly inadequate health services, complete annihilation of the manufacturing industries.

Nonetheless, Margaret Thatcher had qualities and abilities which all will do well to remember. Although hardly a feminist, she was the first and only woman to attain the rank of Prime Minister. She was forthright and concise in expressing her convictions and produced many memorable phrases that echo in people's memories. Through the forcefulness of her personality, she enhanced the reputation of Britain overseas. My opinion is that she was frequently wrong but a very strong leader of the country.

Yours faithfully,  
John Davies, former EF Labour councillor and leader of the Labour Group on Barnet Council, Manor Park Road, N2.

Send your correspondence to: "Letters Page", The Archer, PO Box 3699, London N2 2DE or e-mail [the-archer@lineone.net](mailto:the-archer@lineone.net).

Letters without verifiable contact addresses will not be printed. Contact details can be withheld on request at publication. We reserve the right to abridge letters for reasons of space.

## Regrettable Ricky

Dear Editor,

I wonder if other readers were as saddened as I by the Ricky Savage piece in May's *ARCHER*. The author long ago forsook the whimsy of fairly harmless diatribes for less pleasant rants and overtly political statements. His latest unfunny effort at rewriting history is especially sad and regrettable.

There is nothing to be gained by countering his distorted and deliberately offensive little essay. One does not need to be a Thatcher admirer to be repelled by its tone and content.

It may be worth reminding 'Ricky' that there is a point beyond which his awkward mixture of crude 'satire' and extreme left-wing comment becomes self-defeating and simply embarrassingly bad.

It would be interesting if he (or she?) was brave enough to defend this latest outstandingly nasty piece in his/her own name, instead of hiding behind the Kalashnikov Kultur mask. But somehow I doubt it.

Yours faithfully,  
Gladys Goldnut,  
Kenver Avenue, N12.

## Turret mystery

Dear Editor

I wonder if any of your readers could answer a question for me. I was in my car at the bottom of Brent Street, Hendon, waiting to cross the North Circular Road going towards Golders Green, when I noticed a turret on my left alongside Dollis Brook. I have looked on the internet for more information but haven't come up with any answers as to what it actually is. Does anyone know?

Yours faithfully,  
Jennie Novis,  
Address supplied.

## Cannabis factory in Brackenbury Road

By Janet Maitland

**A large cannabis factory has been operating from a residential property in Brackenbury Road. Police acting on local intelligence entered the building with a search warrant on 11 April and discovered more than sixty cannabis plants growing under dozens of powerful lights.**

"We found cash and state of the art equipment as well as the plants, plus several thousand pounds worth of cannabis already prepared to go," said Sergeant Matt Clee from East Finchley Safer Neighbourhood Team.

A man in his thirties has been bailed pending charges.

## Phoenix in June

By Carina Volkes, Phoenix Cinema manager  
Traditionally summer can be a tough time for an art-house cinema, with blockbusters taking up screen space and big-name awards films saved for the end of the year. However, the Phoenix audience is in luck this year with some wonderful releases, special Q&As with directors, and spectacular live events.

Sparky French romantic-comedy *Populaire* (from 7 June) has been billed as *The Artist* meets *Mad Men*, and with its stylish 50s office setting and quirky charm it's easy to see why.

Just three months after the release of his self-proclaimed final film, Steven Soderbergh is back from 'retirement' with *Behind the Candelabra* (from 14 June), a glittery biopic of Liberace (played with gusto by Michael Douglas) and his younger lover, Scott (Matt Damon).

*Before Midnight* (from 21 June) picks up Jesse (Ethan Hawke) and Celine's (Julie Delpy) story, two decades on from their first romantic encounter in Vienna in *Before Sunset*.

June sees the start of another superb season of six operas from Glyndebourne with *Ariadne auf Naxos* on 4 June, and *Falstaff* on 23 June. On 27 June (and 1 July) there's a rare chance to see behind the scenes of the ambitious Edvard Munch exhibition in Norway with *Exhibition: Munch 150*. From 14 June, we are hosting an extended run of encores of *NT: The Audience*, featuring Helen Mirren's award-winning turn as Queen Elizabeth II.

Find out the story behind the movie with two chances to talk to directors in June. On 11 June, Marcus Markou joins us to discuss the making of his self-financed comedy *Papadopoulos & Sons*. Opera fans rejoice, as Tony Britten joins us for a Q&A following *Benjamin Britten: Peace and Conflict* on 30 June.

## The Odd Couple triumph

Review by Daphne Chamberlain

**Many of us will always associate Neil Simon's *The Odd Couple* with the classic Hollywood film, but how many of us knew that he also wrote a female version? Well, he did, and the Guild Players brought it to Finchley at the end of April.**

Congratulations to them. The success of a play like this depends on the interplay of the characters, and all the actors established definite and different personalities. An evening of *Trivial Pursuit* ends in the hostess offering a room in her apartment to one of her friends, who has just left her husband. Of course, both quickly discover they have got more than they bargained for. The highlight, which turned the audience's

chuckles into guffaws, is the entrance of two very un-PC Spanish Romeos from upstairs.

The script is not one of Neil Simon's absolute best, but is still funny and perceptive. The cast did it full justice, though one or two of the *Trivial Pursuit* players needed a little more voice projection at times. That's only a tiny criticism though. It was a really enjoyable production, which deserved a larger audience than when I saw it on the Saturday afternoon.

Do watch out for the Guild Players, a long-standing drama group who rehearse and perform at the Methodist Church in Ballards Lane, N3. For more information about them, see [www.guildplayers.org.uk](http://www.guildplayers.org.uk).

## Pride in the House

**The deadline for gay and lesbian artists to submit work for the 12th Pride in the House Art Competition is 8 July.**

The work of two to four artists will be chosen for a group exhibition which will run at Lauderdale House in Highgate from 7-18 August. An overall winner will then be offered a solo exhibition later in the year. Pride in the House grew out of the first Mardi Gras Arts Festival celebrating gay and lesbian artistic talent held at Lauderdale House in 2002. Find out more at [www.lauderdalehouse.org.uk](http://www.lauderdalehouse.org.uk)

## Man collapses

**The ambulance service was called to attend to a man who had collapsed on the pavement outside the Poseidon fish restaurant in the High Road at about 8am on Sunday 28 April.**

The man became aggressive when the crew tried to help him so they called the police. Police closed the High Road in both directions and attended the scene until the man calmed down. He was taken to a central London hospital and discharged later that day.





## Do not open until 2048... A snapshot of today

East Finchley's newest school, Eden Primary, celebrated the completion of its new building on 9 May with a traditional Jewish dedication ceremony, known as a Chanukat Habayit, or Dedication of the Home.

The children buried a time capsule full of mementos from their first year, which will be opened in 2048. They also created a piece of community artwork, danced, held a ceremony, and ate large quantities of cake. Team GB Olympian Yamile Aldama, current women's world triple jump champion, was the guest of honour. Peter Kessler, co-founder of the school in Creighton Avenue, said: "When we become owners of a home, we take on responsibilities. We want to make our home a place of understanding, a place of welcome to strangers and guests, a place of thinking and respect. We want it to be a place of peace; and we want it to be a place of joy. "Achieving all those aims takes time and effort, and the Chanukat Habayit ceremony is a way for us all to come together as a community and commit ourselves to those goals. Our builders have given us the perfect environment. Now it is up to us to make it work."



Going underground: Staff, parents and pupils at Eden Primary watch the burial of the time capsule.

### Classes for adults

Eden's commitment to its local community continues in June, when the school will host four evenings of adult education, entitled 'Tree of Knowledge'. The sessions will take place every Wednesday evening in June, and are open to anyone who wants to attend. Topics include: Art for Adults, German Cinema, Cooking an Israeli Feast, Lost Railways of North London, Secrets of a Professional Photographer, and Introductory Hebrew. To book, visit the school's website [www.edenprimary.org.uk](http://www.edenprimary.org.uk).

## Centenary Open Day at Martin School

By Erini Rodis

**At 100 years old Martin School has officially matured and in April it invited ex-pupils to come and explore their old haunt and rekindle a few memories.**

There were a number of displays: old photos of class groups; interviews with former pupils; an exhibition of pin hole camera photos by Year 4 and artefacts discovered by the archaeological team who'd been digging up the field during the previous History Week.

As former pupils we signed

in on arrival, had tea and cake and scoured the main hall (still with its parquet flooring but missing the stage) for people we might recognise. Goose bumps set in as we started to spot folk from our youth, wanting to catch up but not sure where to start after all these years...

While taking a tour of the

school like a bunch of giggling school kids we reminded each other of strict teachers, bullies we'd endured and the tactics of sweet revenge; games of kiss chase, skipping rope songs and playground injuries; crushes we had on people who unfortunately hadn't turned up. And that was just the 1970s!

Others didn't have it so easy, especially in the early 1940s, when pupils were routinely marched to the air raid shelters, or during the polio epidemic which closed the school and had several families quarantined.

### An adaptable school

Some things, like the rope ladder in the 'Infants' hall, and the doors in the corridors, have never changed. The school has held on to its original charm but has continued to thrive and adapt to modern needs. The recent local population explosion is necessitating an expansion which will see enormous changes to the school grounds over the coming years, as Martin expands to a permanent three-form entry school, growing by nearly half its size again!

Stories were gathered by Martin School Centenary team; thanks to Heritage Lottery funding these will be shaped into teaching aids for the school and a website which will be accessible by the wider community.

Further plans are in store for 7 October to celebrate the school's official birthday, so note that on your calendar too!

## STEWART DUNCAN OPTICIANS

SINCE 1962

- EYE EXAMINATIONS
- CONTACT LENSES
- DESIGNER EYEWEAR
- LATE NIGHT
- DYSLEXIA CLINIC
- DVLA APPROVED

126 HIGH ROAD,  
EAST FINCHLEY, LONDON, N2 9ED  
TEL. NO: 020 8883 2020



## COLIN SCLARE

Sales & Lettings

119a East End Road, East Finchley, London, N2 0SZ

**We require all types of property for Sale and Letting, so please call us for a free market appraisal and discussion.**

**Competitive fees: 7% Letting fee 1% Sales fee (plus vat)**

**but more importantly, a quality service to you!**

Contact us on  
020 8444 3351 [www.colinsclare.co.uk](http://www.colinsclare.co.uk) [sales@colinsclare.co.uk](mailto:sales@colinsclare.co.uk)



**SECUREBASE**  
DOMESTIC COMMERCIAL INDUSTRIAL SECURITY

Est 1988

CCTV  
Access Control

Intercom Systems

Intruder Alarms

Locks Doors

Safes Grilles

+ EMERGENCY  
LOCKSMITHS

WHY NOT HAVE  
Your Security Problems Solved!  
A FREE ALARM SURVEY



**020 8442 0660**

112 High Rd • East Finchley • London N2

[www.securebase.co.uk](http://www.securebase.co.uk)