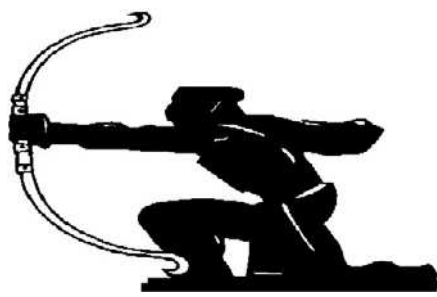


JEREMY LEAF & CO.
Professional Sales & Lettings
AT COMPETITIVE RATES
020 8444 5222
eastfinchley@jeremyleaf.co.uk

Local News is our Aim

THE ARCHER



GLH
www.glh.co.uk
020 8883 5000
CARS & COURIERS

August 2013 No. 237
ISSN 1361-3952

20p
where sold

A community newspaper for East Finchley run entirely by volunteers.

Parking zone court battle: residents win

By Diana Cormack

After winning a momentous High Court victory in their fight against higher parking charges, campaigners in East Finchley have warned Barnet Council to back off and accept the judge's decision rather than wasting more public money by taking it to appeal.

On 22 July, Summerlee Avenue resident David Attfield and the Barnet CPZ Action team were told they were right to say the hike in charges for residents in controlled parking zones was unlawful because they were aimed at maximising revenue and not by any parking management need.

It was a High Court decision that was being closely watched by national motoring organisations and by councils and resident groups across the country.

Unless an appeal is brought and succeeds, residents in East Finchley's CPZ zones will be able to claim back from the council the additional money they have been charged. The council will also need to re-set the charges.

The price hikes in April 2011 saw the cost of a resident's permit rise from £40 to £100 and a visitor voucher rise from £1 to £4. Further inflation increases were imposed in 2012, in the campaigners' words making dropping off for a coffee in East Finchley as expensive as parking outside Harrods.

Barnet Council leader Richard Cornelius responded to the judgement by admitting that the increases had been introduced "too abruptly and rather charm-

lessly" but went on to say the council would appeal against the decision, saying its charges were in line with other London boroughs and the way it spent the revenue was legal.

David Attfield said this response entirely missed the point of the court decision. He said: "It is like saying 'it's ok to pick your pocket because I will spend the money wisely'. An appeal would just waste further money and delay residents receiving the refunds to which they are entitled."

Mr Attfield pointed out that the trial judge refused to give the Council permission to appeal stating that an "appeal has no real prospect of success".

Reaction to the court decision from CPZ residents was jubilant. Jacky Wood, of Cherry Tree Road, said: "Wow, this is better than a royal baby! Thank you David Attfield and supporters for fighting our cause and let's hope Barnet Council will accept this eminently reasonable judgment and not try to drag it on at our expense."

Barnet CPZ Action has launched an online petition urging the council to accept the ruling and not to expose David Attfield to further legal costs. The petition can be signed at <http://petitions.barnet.gov.uk/CPZAction/>



Eva Schloss, centre, with Manorside children and staff after planting the tree.

A tree that will always blossom in memory of Anne Frank

For generations to come, a cherry tree will blossom in the garden of Manorside Primary School in memory of Anne Frank. The tree was planted by her stepsister and Holocaust survivor Eva Schloss, 84, with the help of children at the school in Squires Lane.

Eva, whose mother married Anne's father Otto after the Second World War, spoke to year 6 pupils after the planting. She recalled how her father once said: "If the world was going to end tomorrow, I would still plant a tree today."

She told pupils: "Trees are so important to us because they bring us life. They bring us food and they are a home to wildlife. But remember that a human life is much more vital than a tree's. When a tree is threatened many people will object. When one and a half million children were killed across Europe [in the Holocaust], no one said anything."

Anne Frank wrote in her diary about the cherry blossom tree she could see from the attic window where she was in hiding from the Nazis and it came to symbolise her dreams of freedom that never came true.

After the tree-planting, artist Cindy Lass presented the school with a print of her painting of Anne in her attic, seen through the branches of the cherry tree.

Prime LocationsThe Right Choice
Estate Agents - Valuers - Residential Sales - Lettings - Management - Cyprus Properties
40 High Road East Finchley London N2 9PJ Tel: 020 8883 9090 Fax: 020 8883 8580
Email: enquiries@primelocations.co.uk Website: www.primelocations.co.uk
Call us for a Free Valuation. Family Business you can Trust.

PRICKETT & ELLIS ESTD 1767
82 High Road East Finchley N2 9PN
020 8883 0033
highroadn2@prickettandellis.com
Estate Agents and Valuers - Established 1767

Everything Electrical Ltd
For all your electrical needs
www.everything-electrical.com
38 High Road, East Finchley, London, N2 9PJ Tel: 020 844 7994
For a friendly and reliable service call us FREE on 0800 279 3463
LANDLORD NICEIC CERTIFICATES & PAT TESTING
If you are a landlord and require electrical certificates for your rented properties then look no further. Everything Electrical is known in the East Finchley area as being one of the leading electrical contractors you can trust. Why not see for yourselves give us a call for a friendly service with free advice.


VICTORY AUTO SERVICES

**Mechanical & Diagnostic Repairs
on most makes & models**

Servicing, MOTs, Tyres,
Bodywork, Vehicle Air-Conditioning

109 Fortis Green East Finchley London N2 9HR
Tel: 020 8883 9707 / 0023 Fax: 020 8482 9179



• Visit your community newspaper on-line at www.the-archer.co.uk •



THE ARCHER

PO Box 3699, London N2 2DE

www.the-archer.co.uk Email: the-archer@lineone.net

[@TheArcherN2](https://twitter.com/TheArcherN2) www.facebook.com/TheArcherN2

Voicemail (messages only) 0800 612 0748 for editorial and general enquiries or 0800 612 4027 for Advertising enquiries only

Published by
East Finchley Newspapers

Copy Editor
John Lawrence

Production Editor
Alison Roberts

Picture Editor
Mike Coles

Editorial Team
Diana Cormack
Daphne Chamberlain

Sub Editors
Ann Bronkhorst
Jeff Robson
Pam Kent

Finance & Advertising
John Dearing

Distribution
Toni Morgan
Rose Molloy

Printed By
Sharman & Co Ltd

Thank you to The Bald Faced Stag for providing us with a meeting place.

THE ARCHER team wishes to thank all the generous people who give up their spare time, in all weather, to deliver the paper for us.

If you have a story for us, please contact us at the above address.

Comments to THE ARCHER may be published unless clearly marked 'Not for publication' within the text.

Copy deadlines – **September:** 16 August, **October:** 13 September, **November:** 11 October

USEFUL TELEPHONE NUMBERS

Councils

Barnet Council:

| | |
|-------------------------|---------------|
| Admin/Town Hall | 020 8359 2000 |
| Council Tax | 020 8359 2608 |
| Recycling & refuse | 020 8359 4600 |
| Primary Care Trust | 020 8201 4700 |
| Benefits Agency | 020 8258 6500 |
| Employment Service | 020 8258 3900 |
| Haringey Council | 020 8489 0000 |

Leisure

| | |
|-----------------------|---------------|
| Alexandra Palace | 020 8365 2121 |
| East Finchley Library | 020 8359 3815 |
| Muswell Hill Odeon | 0870 505 0007 |
| Phoenix Cinema | 020 8444 6789 |
| Warner Cinema | 020 8446 9933 |

Transport

| | |
|---------------------|---------------|
| Nat. Rail Enquiries | 0845 7484950 |
| City Airport | 020 7646 0088 |
| London Transport | 020 7222 1234 |
| National Express | 08705 808080 |
| Heathrow Airport | 0870 000 0123 |

Hospitals

| | |
|-------------------|---------------|
| Barnet General | 0845 111 4000 |
| Coppetts Wood | 020 8883 9792 |
| Finchley Memorial | 020 8349 7500 |
| Oak Lane Clinic | 020 8349 7000 |
| Royal Free | 020 7794 0500 |
| St Luke's | 020 8219 1800 |
| Whittington | 020 7272 3070 |

Health Advice

| | |
|----------------------|---------------|
| AIDSline | 020 8363 2141 |
| Alcoholics Anonymous | 0845 7697555 |
| Barndoc | 0300 033 3777 |
| Barnet MENCAP | 020 8203 6688 |
| Cancer Support | 020 8202 2211 |
| Drinkline | 0800 917 8282 |
| Drugs Helpline | 0800 776600 |
| MIND | 020 8343 5700 |
| NHS Direct | 0845 4647 |

OAPs' Advice

| | |
|--------------|---------------|
| Age UK | 020 820 35040 |
| Contact (N2) | 020 8432 1415 |

Crime

| | |
|---------------------|---------------|
| Emergency | 999 |
| Barnet Police | 101 |
| CrimeStoppers | 0800 555111 |
| Victim Support | 0845 303 0900 |
| East Finchley Safer | |
| Neighbourhood Team | 020 7161 9014 |

Help & Advice

| | |
|-------------------------|---------------|
| Advice Barnet Project | 0844 826 9336 |
| CAB Money Advice | 020 8201 7727 |
| Carers' Line | 020 8343 9698 |
| Childline | 0800 1111 |
| Disability Info Service | 020 8446 6935 |
| Gingerbread | 020 8445 4227 |
| National Debt Line | 0808 808 4000 |
| NSPCC | 0800 800500 |
| Rape & Sexual Abuse | 020 8683 3300 |
| Relate | 020 8447 8101 |
| RSPCA Inspector | 0300 1234 999 |
| RSPCA animal clinic | 020 8365 3910 |
| Samaritans | 08457 909090 |
| Refuge Crisis Line | 0870 599 5443 |

Arts festival dates

East Finchley Arts Festival takes place this year from 28 September to 6 October, with another great mix of art, opera, orchestral music, recitals, film and choral music. Visit www.eastfinchleyartsfestival.org.uk

High Road parking

Please note that in our report last month into possible changes for our High Road parking we mis-stated the time limit for blue badge holders.

It is proposed that parking within existing Pay by Phone parking bays for badge holders will remain at three hours (not one as stated).

Do you have a story for us?

You can send your stories and photos to the-archer@lineone.net or by post to the address top left. Tweet us @TheArcherN2 and find us on Facebook.

How would you spend £1million?

As reported in our January issue, the Big Lottery Fund is giving £1million to the Grange, Font Hills and Thomas More estates and the streets in between, for the Big Local project. Here Emily Burnham tells us why it's vital that everyone has a say on how the money might be spent.

The unusual thing about Big Local is that it is almost completely up to residents to organise what to do with the grant money and this process starts from the ground up. People need to come forward with their ideas, their skills, a bit of time and their willingness to speak about the project to their friends and neighbours.

We have a Big Local rep, Paul Bragman, assigned to help. Martin Primary is holding the 'getting started' money (£20,000, in addition to the £1million) as our Locally Trusted Organisation.

So far, residents have volunteered to help in various ways. You may have seen the Big Local stall at the East Finchley Festival, where residents offered henna and face painting. People have got together to design a website, a leaflet, a banner, set up a Facebook page, Twitter

and email accounts. Amateur historians wrote some history about the area.

We joined a "Big Dig" event on the Grange. Local organisations met at the Phoenix. Barnet Homes organised a leaflet drop on the Grange. People are taking leaflets around shops. A young person is designing a leaflet for young people... Get the idea?

Future plans include organising an event on the Grange on 28 September including a pop-up cinema and activities for all ages; recruiting a team of ambassadors to help find out more about what people want to do with the money; holding regular public meetings and getting those posters and leaflets spread around.

By January we want to develop initial plans for the £1million. Visit our website to give your views and find out more: www.grangebiglocal.org



The area covered by the Big Local project, centred on Long Lane.

ROBIN KIASHEK

BSc (Hons) Ost Med

OSTEOPATHY in Fortis Green

including the Perrin Technique for Chronic Fatigue Syndrome/ME, (Western Medical) Acupuncture Nutrition, Life Coaching/NLP and Autogenic Training

52 Twyford Avenue
Fortis Green
London N2 9NL

020 8815 0979
07956 213 759

www.robinkiashek.co.uk



Planning Applications

Barnet Council

78 Brim Hill, N2

Roof extension, including rear dormer window to facilitate loft conversion. Modifications to roof terrace railings.

95 Brim Hill

Single-storey side extension, including three roof lights. Replace front door. Alterations to front, including new paving and planting bed. New window to replace French doors to side elevation. Roof extension, including new rear dormer window and enlarged side dormer window to replace existing. Internal alterations on all levels.

16 Deansway, N2

New raised deck, following removal of existing decking. Change to window and door to existing rear extension.

250 East End Road, N2 (Bobath Centre)

One non-illuminated panel to railings on front elevation.

80 Hamilton Road, N2

Single-storey rear extension.

60A High Road, N2

New floor level with mansard roof. Conversion of existing maisonette into two self-contained flats.

100-102 High Road, N2 (Poseidon fish restaurant)

Alterations to shop front, including one entrance door and staircase to facilitate access to first-floor flat.

104 Huntingdon Road, N2

Roof extension including rear dormer, to facilitate loft conversion. New Juliette balcony, following demolition of existing window. One roof light at existing roof.

24 Lancaster Gardens, N2

Partial removal of single-storey

rear extension, and construction of new one.

60 Lancaster Gardens, N2

Non-material amendment to planning permission dated 31/5/07, for three-storey building containing eight flats. To include pitch front elevation changed, and dormer added in place of roof light.

51 Manor Park Road, N2

Single-storey rear extension.

35A Sedgemere Avenue, N2

Roof extension, including rear dormer and two front roof lights, to facilitate loft conversion.

Haringey Council

9 Ringwood Avenue, N2

Amendments to approved planning permission to relocate side extension towards front line of dwelling over garage section, and set in 0.5m from boundary.

Piano Lessons

Jazz, blues, classical, rock

Also theory, keyboard harmony, improvisation, composition, arranging, song-writing, GCSE & A level music

James Drew-Edwards LTCL GTCL PGCE (music), CRB checked

jamesdrewedwards@gmail.com

020-8444 0655



The charred remains of the shed at East Finchley Allotments.

Arson at the allotments

A burnt-out lawnmower and charred cups and gardening tools lie among the blackened remains of a shed that was destroyed by arsonists at East Finchley Allotments in the last week of June.

The wooden structure burned for a couple of hours and destruction was total. Residents in Creighton Avenue and Bedford Road reported seeing huge plumes of black smoke above the scene. Fire crews were called to the allotments and brought the blaze under control. One theory is that the arsonists climbed over the fence from Coldfall Wood and set about causing damage.

Invasion of the recycling bins

By Sheila Armstrong

From October the recycling service in Barnet will change and it means an extra bin for every household. Some homes, even those with small gardens, will need to find space for three large wheely bins.

Bin number one will be the regular rubbish bin we all have now for household waste that cannot be recycled. Bin number two will be blue and is for all items that can be recycled, taking the place of the existing small black and blue bins. Glass, paper, cardboard and more types of plastic will go in here.

Bin number three will be for green and all garden rubbish. Only the green bin is optional; however it's not clear yet what you do with garden waste if you don't opt for a green bin – make your own compost, perhaps.

All these bins are the usual 240-litre size, but Barnet Council says the new blue bin's footprint is only a very little bigger than that of the current blue and black stackable bins. Nevertheless, it's still three bins instead of two if you want the full recycling service.

Black and blue bins will be collected on the same day from October, green bins on a Saturday. The old black and blue boxes may be kept by residents if wished, or taken to the recycling centre in Summers Lane.

In addition, residents will be given a new food waste recycling bin, which is very small, also blue, and can be taken outside without much difficulty. More than 30% of what we put in our black bin currently is food waste and if collected separately it can be turned into compost.

The changes are being made because the Government has asked all local authorities to recycle more on the basis that it's possible to recycle 70% of household waste. Pressure on landfill sites will be lessened and Barnet's environmental impact will be reduced.

All the new arrangements are for houses. Those for people living in flats will be very little different from now, mainly just relabelling of the bins currently in use.

At the time of writing, the new bins are due to be delivered around 14 October. Letters will be sent to residents in July and August detailing arrangements. Keep up to date on the Barnet website www.barnet.gov.uk/14-october, phone 020 8359 4600, or e-mail first.contact@barnet.gov.uk

The future of East Finchley Post Office

A public meeting organised by the Communication Workers Union was held in East Finchley Library on 3 July to oppose plans to close the Post Office on Viceroy Parade and incorporate it into a local shop.

Simon Berman, senior stakeholder manager for the Post Office, told the meeting that the Crown Office network was running at a loss of £40 million per year and was under Government instructions to break even by March 2015.

Plans to achieve this include franchising 70 Crown Offices. These will be run by a private owner alongside another retail business. Simon envisaged the same range, level and continuing provision of services as at present.

Doubts and warnings

This was doubted by some. East Finchley councillor Arjun Mitra reminded the audience that, despite similar promises in Finchley Central, the Post Office had closed and the service was completely lost to local residents. He raised concerns about the effect on our local business community of losing our Crown Post Office, which would reduce footfall on the High Road even further.

Ian Ward, CWU postal executive council member, commented that there was no suitable outlet on the High Road large enough to accommodate the six counter serving positions and private space for customers presently provided by the Crown Office. Any moves would mean a reduction in counters available and a severely reduced service, he claimed.

He said that Post Office staff could opt for redeploy-



Left to right - Cllr Arjun Mitra, Ian Ward, Cllr Colin Rogers, Simon Berman, Anita Turner (PO) Photo by Diana Cormack

ment or voluntary redundancy to the detriment of services to customers and that there would also be no long-term guarantee, as the franchisee could give up the contract at any time.

Questions from the floor included concerns about the effect on the elderly and infirm.

Unanimous vote

At the end of the meeting chaired by Councillor Colin Rogers, a vote against the franchising was carried unanimously.

Bids for the franchise closed on 27 May. A formal six-week consultation period will follow any announcement should a retail partner be found. In the event of no agreed franchise partner, East Finchley will remain as a Crown Office.

Apple a day

By Jane Howard


With a bumper fruit harvest in prospect this year, East Finchley Abundance plans to hold another Apple Day on 12 October. They may be able to help local residents pick fruit from their apple (or any other) trees.

They would love to hear from any volunteer fruit pickers to join the team! Most of the fruit will be given to the owners, who will be asked in exchange to donate some for juicing and distribution on the Apple Day.

Anyone interested, or with already picked surplus fruit that they are happy to donate, is welcome to contact EFA at efabundance@btinternet.com or on 020 8815 0197. Otherwise, just pop along to one of their meetings at the Old White Lion pub next to the station on the first Monday of each month at 6.30pm.

- Beginners -
Tai Chi & Qigong
 2 Classes in East Finchley
 Wednesdays at either 12.00 or 1.00pm (Trial session: £5)
 James Drewe is a qualified teacher and has been practising t'ai chi for 37 years.
 He is the author of 3 books on t'ai chi & is a member of the BCCMA.
 Other classes: www.taiji.co.uk
 email: james@taiji.co.uk phone: 020-8883 3308

Nicky Sharp
Osteopathy Clinic
Cranial and Structural Osteopathy and Acupuncture
All Major Insurers Accepted
 For consultations and appointments:
Telephone: 020 8815 9433
 260 East End Road www.nickysharposteopathy.co.uk
 London N2 8AU e-mail: info@nickysharposteopathy.co.uk

KATHRYN SCORZA

Dissolving the blocks to self healing
 Kathryn Scorza
 Registered Hypnotherapist
 Soul Therapist
 and Spiritual Healer
 tel: 07703 404 839
 email: kathryn@kathrynskorza.co.uk
www.kathrynskorza.co.uk
HYPNOTHERAPY
SOUL THERAPY
SPIRITUAL HEALING
 Hypnotherapy offered for a wide range of issues
 excluding only
 weight loss and smoking cessation

KF COMPUTERS AND IMAGING
 93 High Road, East Finchley, N2 8AG
www.KF-Computers.com / www.LondonMobilePhone.co.uk
 • LAPTOP/PC REPAIRS/SALES FREE CHECKUP
 • MOBILE PHONE REPAIR/UNLOCKING NO FIX NO FEE!
 • WEBSITE DESIGNING £99 ONLY
 • WEDDING VIDEOS & PHOTOS £499 ONLY
 • STUDIO PHOTOSHOOT £49 ONLY
 • PHOTO PRINTING 6 ID PHOTOS £4.99 ONLY
02088159898

Josephines
 EXPERTS IN CREATIVE FLORAL DESIGN
 For the freshest flowers around
 Pop in and choose from the largest selection in the area
 No excuses – to miss that special occasion
www.josephinesflowers.co.uk Tel: 020 8444 9569/020 8883 3598 60 High Rd, East Finchley London N2 9PN



Art lovers at one of the East Finchley Artists Open Houses. Photo Peter Hale

Artists open their doors wide

By Peter Hale

Perfect summer weather for the East Finchley Open artists' tenth Open House Weekends meant that we could fling open the doors and windows and welcome visitors into our cool houses. This year's open house exhibitions were again a rewarding experience for artists and visitors alike. Viewing the art was enhanced with a chance to look at house and garden.

McDonald's HQ hosts training centre

By Emily Bird

Next month the Hospitality Guild will open the doors to a state-of-the-art training facility at the McDonald's headquarters in East Finchley.

Hospitality House, which was donated to the Guild rent-free by McDonald's and funded by industry employers and the government, will host hospitality training and events to help the Guild improve standards of professional development in the industry.

The Guild was founded in 2012 to draw together the expertise of the UK's hospitality industry bodies and employers with the common aim of promoting hospitality as a career.

The prestigious facilities at Hospitality House include a high-tech demo kitchen, training bar, bar cellar and café as

well as conference facilities and office space. It provides a great location for hospitality events and training as well as for local companies looking for a venue with a difference.

Audio visual technology will allow users of the venue to communicate in real time with online participants anywhere in the world, a huge cost saving for businesses wanting to train or entertain people without covering travel costs.

The Hospitality Guild's executive director Suzy Jackson said: "The venue is perfectly located in East Finchley and we can't wait to settle in and work closely with local businesses. When we open our doors officially in September we fully expect it to knock everybody's socks off!"

Find out more at www.hospitalityguild.co.uk/hospitality-house

Good friends and returning 'collectors' met up with neighbours and visitors from further afield. When artworks are bought as a present it is especially gratifying. For the members and special guests the week was enriched with a series of private views between the two weekends. So now it's all down to planning our Winter Fair!

Old Hamiltonians reunite

In 1963 a new Catholic secondary school opened in Hamilton Road, East Finchley. This year, Bishop Douglass will mark its half-century as its older neighbour Martin School celebrates its centenary.

The Old Hamiltonians (former pupils of Bishop Douglass) are planning a reunion on 7 September at the school. They anticipate a large turn-out, including some of the original 1963 intake. A busy programme of events starts with afternoon tea at 3pm followed by a celebratory Mass and tours of the site. There will be an exhibition of ex-students' work, a barbecue and a disco in the evening.



One of Karyn's pet portraits.

Current pupils of Bishop Douglass will be on hand to help with food and drink, and the school's welcome and assistance is much appreciated by the reunion's organisers.

To learn more about the reunion and for tickets (£10 per head) visit www.bdreunions.com

Sit! ... for a puppy portrait

By Jasmine Elliott

On the 13 July, I visited many of the locations taking part in this year's East Finchley Open event. The East Finchley Open has taken place for the last 10 years, offering local artists an opportunity to display and sell their art in their homes.

One artist particularly caught my eye with her dog portraits. Karyn Johnstone, of Fortis Green, has been making art ever since she can remember but recently has been inspired to paint portraits of dogs for their owners. Karyn works as a graphic designer and after a busy day finds it relaxing to sit down and either sketch or paint.

She says that pet portraits can be old fashioned and slightly boring, but her pieces are exactly the opposite, creating a quirky modernised effect. Karyn makes the dog's collar appear 3D by adding texture by means of handmade jewellery with the dog's name stamped on the pendant.



Karyn Johnstone

She is especially skilled in capturing the playfulness in the dog's eyes. Karyn says the eyes are the most important thing to capture as they bring the dog to life. I'm hoping to commission a dog portrait of my Labradoodle.

Karyn is very open to doing other types of animal portraits in either etchings or oil paintings. If you want to buy a dog portrait or any of her non-dog related art, contact her at karyjohnstone@sky.com

Her portraits were among many fantastic pieces of artwork I saw during the EFO event, including Wolfgang Haack's marvellous photography, Jenny Rymmer's beautiful ceramics and all of the astonishing paintings.

Electronic luggage tags

One more use for your smartphone. If a prototype electronic luggage tag passes British Airways tests, you could soon stop wrestling with paper labels. We are told that holding a phone over the tag will display a unique barcode relating to your flight and destination. Obviously you check in first.

10% OFF
INSTORE
WITH THIS
ADVERT

**VINTAGE CLOTHING
RETRO HOMEWARE
HAND PRODUCED GIFTS
GREETINGS CARDS**

**OPEN EVERY
FRIDAY & SATURDAY
10am-4pm**

MARTIN SCHOOL
EAST FINCHLEY HIGH ROAD
CHURCH LANE
LEOPOLD RD
LESLIE RD
KING STREET

King Street Mews / East Finchley N2 8DY
aroominmyhouse.co.uk

All Saints' Church, Durham Road, East Finchley Church of England

Sunday masses at 8.00 a.m. and 10.00 a.m.

Weekday masses at 10.00 a.m.

(Refreshments are served after mass on Sunday and Thursday)

Prayer requests are gladly accepted.

The Parish has a flourishing social life.
Contact the Vicar, Fr Christopher Hardy,
on 020 8883 9315.

All Saints' also has a strong musical tradition and an enthusiastic choir of both adults and children.

Experienced singers are always welcome.
Contact Geoffrey Hanson on 020 8444 9214.

<http://www.allsaints-eastfinchley.org.uk>



East Finchley Altogether Better

By Diana Cormack

East Finchley has been chosen to pioneer a new initiative that aims to involve everyone in the community, helping them share information and discuss what they are doing now and what they would like to improve.

East Finchley Altogether Better (EFAB) was launched with a five-hour conference at Shree Aden Depala Mitra Mantra Mandal Community Centre, Church Lane, in early July. It has the support of a range of organisations, including Community Barnet, Finchley Charities, Barnet Council, Barnet Clinical Commissioning group and Barnet Older People's Assembly.

Togetherness

Opening the conference, co-chair Peter Cragg said that he wanted to revive the "togetherness" of the past by getting people to communicate in order to promote more and varied involvement in their locality.

The scheme is being launched in East Finchley because of its great sense of community and the number of local organisations. How things develop here will serve as an example when it is introduced into other parts of the borough.

After co-chair Roger Chapman had described his warm feelings for the area, the first activity (called "What's good in East Finchley?") provided plenty of examples from local people. During "What does this tell us?" facilitators were on hand to suggest topics and expand on ideas. Among the many aspects under discussion were health, loneliness and age issues, including the

lack of facilities for teenagers. People continued to talk over lunch, when they could also visit stalls from Barnet Age UK, The Carers' Trust and Central London Community Healthcare.

Health and well-being

East Finchley's Lesley Chowen opened the afternoon session, getting everyone to join in an enjoyable chair exercise session. Brains were then stimulated by a health and well-being presentation, which included a quiz on health and social factors in N2. During feedback, two interesting initiatives were introduced: the Casserole Club, which is a meal-sharing scheme (barnet@casseroleclub.com) and time-banking, described as reciprocal voluntary work-sharing (www.timebanking.org)

Long-term resident David Smith, of Abbots Gardens, commented: "We are so lucky to live in a community that comes together so well: this conference added another facet to good old East Finchley."

Seen and heard
A woman with a young child was spotted picking herself a bunch of flowers from the bushes outside Budgens and setting off up the High Road with her free bouquet.



Nick keeps his eyes on the road as he crosses Tower Bridge.

Crystal Palace and back... by bike!

By Nick Young

At the start of the summer, I took part with several thousand others in London Night-rider 2013, a 100-km charity bike ride from Alexandra Palace to Crystal Palace and back, via central London.

Bikes and cyclists of all ages met at 11.25 pm. On the road down from Ally Pally people were apologising as they cut each other up and came within inches of making several bikes hit the deck. Amazingly, we all emerged unscathed.

A steep climb to Highgate and Hampstead split the peloton, and from there we descended into central London. Familiar landmarks flew by as we rode through Westminster to the river, and then across to our first rest-stop.

Soldiering on

The second leg to Crystal Palace Park went well until the final climb. Some people got off and walked, but I soldiered on at a snail's pace. At the park, people collapsed before drag-

ging themselves to the queue for tea and snacks. We'd been cycling for over three hours and had another 60km to go.

There followed a series of smooth descents and killer hills. Dawn came at Blackheath. We passed through Bermondsey and stopped at City Hall, the third rest-stop. In the grey dawn, people took a breather before riding across Tower Bridge.

There followed a section through the City and a detour through the Docklands. I was running on autopilot by now. On a cold Sunday morning I was unable to appreciate the scenery – I just got my head down and cycled.

Mile End was the last rest-stop. The coffee stall ran out

of cups, and someone said that there were just ten miles to go.

Pedalling home

On the last leg, my big landmark was passing from the E postcode area to N. Almost home...

We steadily climbed through back streets. Suddenly, I spotted the TV tower through the trees. One last hill, but the road up to Ally Pally is tough if you've been cycling all night. Someone got off and started to walk, but I'd come too far to give up.

I finished at 8am, very tired but also pleased with myself for completing the ride and thus raising over £200 for a good cause. I collected my medal and joined the queue for the bacon rolls.

Alexander Technique

Improve your posture, health and performance

- Backache
- Neck/shoulder pain
- High blood pressure
- Poor posture
- Stress
- R.S.I.

"Of all the approaches tested, [...] Alexander Technique lessons proved to be the most beneficial." British Medical Journal 2008

0780 861 2510 ~ info@adrianfarrell.co.uk ~ www.adrianfarrell.co.uk

ALMAR BUSINESS SOLUTIONS

Accountancy | Payroll & Book-keeping | Tax services

| | |
|---|---|
| Business services: <ul style="list-style-type: none">Bookkeeping & AccountingBusiness planningBusiness start-upCompany SecretarialCorporate tax planningeCommerce & Payment SolutionsPayrollService Charge AccountingVAT | Personal services: <ul style="list-style-type: none">Personal tax planningSelf assessment Specialist sectors: <ul style="list-style-type: none">Building profitsCharitiesOwner directorsRetailSole traders |
|---|---|

Why choose us?
By providing high quality of service and not charge over the top fees, we retain the business and loyalty of our customers, as well as win many new ones through word of mouth. We also work with tax specialists, investor advisors and auditors to provide clients additional services where there is a need.

Call us for a FREE review of your requirements and to discuss best way forward, with no obligation.
Tel: 07894 473309 or email: info@AlmarBSI.co.uk

Visit our newly improved website with useful and topical information: www.AlmarBSI.co.uk

Almar Business Solutions Limited is a registered company in England and Wales (registered number 04541322), holder of ACCA Practising Certificate with Association of Chartered Certified Accountants and has Professional Indemnity Cover for its business activities.

A Local Handyman

available for general household & garden maintenance.

No Job Too Small
Free Estimates
Call John on: 0789 010 3831
or: 020 8350 2188

Greene Driving School

East Finchley N2

From £17.50 x 2 Hr lessons

Safe driving for life

Low Co2 footprint 114

Eco & Low Maint Tuition

Pass Plus 4 cheaper

Insurance. Greenedriving.co.uk

Call John M.I.M.I
0773 851 4406

east finchley clinic

- Back Pain
- Neck Pain
- Whiplash Injury
- Sciatica
- Sports Injury
- Frozen Shoulder
- Arthritis
- Tennis Elbow
- Sprain or Strain
- Rehabilitation
- Neurological
- Stroke

Wendy Longworth & Associates physiotherapy practice offers a variety of treatments at the clinic, or off-site, in patients homes, nursing homes, private hospitals and other organisations.

www.eastfinchleyclinic.co.uk
020 8883 5888
2-3 Bedford Mews Bedford Road London N2 9DF

mezem

www.mezem.co.uk

2 COURSES

£12.95

Domestic Appliance Sales & Repairs

No Callout Fee 020 8444 4303 No Callout Fee
sales@ajlappliances.co.uk - www.ajlappliances.co.uk
Authorised Dealership for Bosch, Neff, Siemens, Miele & Liebherr

AJL

Most Brands Repaired
Daily Time Slots
Freestanding & Built In
Fully Trained Service Technicians

AJL Appliances Ltd



An aerial view of The Archer Academy's plans for Stanley Field

How the academy will look

By John Lawrence

The Archer Academy unveiled the design for its school building and for the community sports facilities planned for Stanley Field at a public event in early July.

A single three-storey, L-shaped school building will occupy the area of the field closest to the railway line and the path alongside Holy Trinity Primary School. The rest of the field will be occupied by a full-size grass sports pitch, two games courts, a grass playground and a hard playground.

Visitors to the consultation event at Holy Trinity were able to view a model of the proposed development and a computer-generated walk-through of the classrooms, corridors and sports hall. Subject to planning approval, building work is scheduled to begin this autumn with completion in winter 2014-15. The first pupils will be taught on the site from September 2015.

Local reactions

Feedback was invited from everyone who attended. Visitors

we spoke to were impressed by the efficient use of the available space but also had a number of questions and concerns.

One resident of New Ash Close, which borders the field, was anxious to discover where the classroom block would be placed. "I live next door so I didn't want it looking over my flat but I'm pleased to see it's at the furthest point of the field away from nearby houses," he said.

One mother of children at Holy Trinity School was concerned at the number of cars that would be coming into the area at drop-off and pick-up times, and the congestion that could be created by hundreds of secondary school children arriving and leaving at the same time as the primary school children who already attend Holy Trinity.

Cars discouraged

Andrew Dmoch, the academy's transport consultant, told *THE ARCHER* that parking was being deliberately restricted at the school to deter car use and that staff, parents and pupils would be directly asked to travel by public transport or on bike or foot. In addition, the academy would operate staggered open-

ing hours to avoid the start and end of the school day clashing with Holy Trinity's.

"Two of the challenges we face are having another school next door and needing to fit into an area that is already busy at the end of the school day," said Andrew. "We've thought long and hard about ideas to avoid problems and built them into our plans."

Project manager Sean Harries said it was also hoped that members of the public using the field's sports facilities after school hours and at weekends would leave their cars at home.

Ben Marston, from architects Jestico + Whiles, said the school building had been positioned to minimise impact on surrounding homes, new fencing would border the sports pitches and paths, and pedestrian access routes would be widened and improved to avoid congestion. The former site of the Herbert Wilmot centre will become an entrance path and a staff car park with 20 or so spaces.

Editor's note: The Archer newspaper is not associated with The Archer Academy.

Archers on target for a smooth September

With the opening of East Finchley's new secondary school just a month away, incoming students Georgina, Mia, Eoin, Zahra, Devina, Kerri, Mikaela and Jamie report on preparations for life at the Archer Academy.

Moving to a new school is like moving to a new home. It's not easy to leave the family of your primary school but it feels to the Archer Academy students as if they are joining a new family.

During the past seven weeks there has been a great transition from primary school to the academy. The most helpful part was the VIP Zone on the school website. Every child was given a username and password so they could log in and take part in weekly challenges, as well learning about some of the wonderful teachers.

Instead of just an induction day, the academy had a full induction week with events for parents and children. They met their teachers and new classmates,

saw what lessons were like and took part in fun and exciting workshops.

Secondary transition is extremely important in a Year 6 student's school life and it can be daunting. But the academy's system is one of the most delightful options available, and will really help Year 6 children feel happy and safe in advance of September. It was well organised, fun and no stress: all a child could want.

As one future student said: "The Archer Academy is a seed that was planted only recently but it has already grown leaves." With the pioneer students arriving next month, the Archer Academy team has pulled it off completely.



Future academy students Georgina from King Alfred's School; Mia from St Mary's, Finchley; Eoin from Moss Hall; Zahra from Frith Manor; Devina and Mikaela from Manorside; Keri from The Swaminarayan School and Jamie from Tetherdown.

Swim for the hospice

Cool off after a hot summer by taking part in a sponsored swim in aid of the North London Hospice. Participants of all ages and abilities are welcome to join the event at Queen Elizabeth Boys' School in Queen's Road, Barnet, on Sunday 22 September. Qualified lifeguards will be in attendance at this large pool and registration is free. Places are limited so register in advance by 14 September by contacting Vivienne Bentley on 020 8203 5131 or events_nwsg@aol.co.uk

Japanese Acupuncture & Moxibustion

Gentle, dynamic & effective. Treating a wide range of conditions. www.fionahurlock.com

FREE 20min consultation

Fiona Hurlock

Ph 07795 203107

UTOPIA 1a Leicester Mews, N2 9EJ

Klages Plumbing & Heating Agency LTD.

CONTACT TELEPHONE No: 020 8346 7218 / 8636

KLAGE

A NAME IN PLUMBING FOR OVER 40 YEARS

The Sport of Fitness has arrived in Muswell Hill

**CrossFit
Muswell Hill**



Achieve:
Athletic capability
Weight Loss
Flexibility
Endurance
Strength
Power
Speed
Agility

Call 07867361315 to book

www.CrossFitMuswellHill.co.uk



NHS CHECK-UPS £17.50
(this includes x-rays where necessary)

NHS EXEMPT PATIENTS AND CHILDREN UNDER 18 ARE FREE

new NHS list now open

member of the
BDA and the BDHF

BDA

British Dental Health
Foundation

smile with confidence

020 8444 3436

144 The High Road, East Finchley, London N2 9ED

www.eastfinchleysmiles.co.uk



A turning point for the Old Barn?

By Janet Maitland

A three-year controversy over the management of the Old Barn community centre in Tarling Road has reached a turning point. Local people have been campaigning to return the centre to the community ever since it was taken over in 2010. Now they might finally be given a voice in how it is run.

For over 25 years the Old Barn was a busy hub of community events and activities, with a focus on pioneering services for children and young people. Shortly after a group of new trustees led by Reverend Geoffrey Muhoro took it over in 2010, services such as the thriving Monday Club Youth group found themselves homeless.

In 2011, nearly 100 local people applied to become members of the Old Barn to ensure the management ran services the community needed, but the applications were not accepted by the new trustees.

Charity Commission involvement

Over the last year, Barnet Council has been working closely with the trustees to resolve the under-utilisation of the building and to ensure compliance with all the terms of the lease. The Charity Commission has also become involved. It has directed the trustees to hold an AGM in order to provide an opportunity to increase the representation of the local community on the management committee.

"We were heartened to hear that the Rev Muhoro has proposed an AGM on 21 July as there are many local residents who would like to become members and put their skills and expertise to good use," said local campaigner Will Hudson. "It is so sad that this valuable

resource is no longer being used in the way it was intended."

AGM mystery

But at the time of going to press, Mr Hudson said that although 22 people had contacted the Old Barn for membership forms, to his knowledge not one person had received a copy of the membership form or details of the time or venue of the AGM.

"The matter is now back with the Charity Commission," he added. "They have assigned an officer to help support the Old Barn Trustees to fulfil their governance obligations."

Farewell to a much-loved head

By Paul Woolwich

She has cared for other people's children for half a century and spent the last 25 years running a top-rated Muswell Hill pre-school dedicated to giving infants the best possible start in their education. Now headteacher Shirley Welton is packing it in... almost.

The parents and carers whose children attend St James's Pre-School, Fortis Green Road, were shocked to hear that Mrs Welton had decided to hand over the reins at the end of this summer term to spend more time looking after her husband, who is seriously ill.

"It's very sad that I have to give it up," she said, "but I am not disappearing altogether. I'll be on hand to give advice and help when called on to do so."

When Mrs Welton took over the pre-school, based in the Birchwood Centre, in September 1989, facilities were shabby and there was no garden for the children to play in.

Over the years, the former Dr Barnardo's nursery school teacher transformed the place, making it one of the most sought-after pre-schools in north London.

During her time as headteacher over 1,200 children have been touched by Mrs Welton's kindness and her devotion to learning through play; their lives have been enriched by the experience.

In a tribute letter to parents the Pre-school Committee wrote: "Her dedication and constant involvement in the pre-school have been outstanding. She has worked tirelessly to ensure the pre-school is a happy and caring environment for all the hundreds of children who have passed through the doors."



Shirley Welton is retiring from St James' Pre-School. Photo by Yvonne Chakraborty



Nino Rocha Santos caring for the plants. Photo by Diana Cormack

A platform for flowers

By Sheila Armstrong

As already reported in THE ARCHER, East Finchley station is entering TFL's Station in Bloom competition with the unstinting help of the N2 Gardeners, and donations from local sponsors and commuters.

This year the theme has been 150 Years of London Underground and judging was taking place on 18 July, just as we went to press.

Nino Rocha Santos, who works at the station, took us on a tour in early July pointing out where the new plants and tubs will go. The colour theme is red, white and blue, the colours of the London Underground roundel.

Station bank to the right of the station entrance, the garden that the volunteers of N2 Gardeners have been cultivating for some years, was entered in to the Cultivated Garden section of the competition for the first time this year. New helpers and contributions to the cost of the plants for the competition are also welcome. To help in any way, contact the group by email at N2gardeners@gmail.com or read the blog at <http://n2gardeners.blogspot.com>

Human Resource Solutions Plus

Helping you to manage, train and develop your employees at a commercially sensible cost.

HRSP

www.hrsp.net

Richard Pell: info@hrsp.net • PO Box 27013, London, N2 0WX

TELEPHONE FAULTS REPAIRED

50% CHEAPER THAN BT * the POST OFFICE * TALK TALK etc
HOME * OFFICE * FACTORY
LINES * EXTENSIONS * EQUIPMENT - TESTED & REPAIRED

Call RON COLLINS 0208 883 9325 * 07748 278728
email: roncallsaver@yahoo.co.uk



brera gardens

- garden design
- maintenance
- hard landscaping
- irrigation systems
- soft landscaping
- East Finchley based
- indoor plants

Mob. 07939 557 934

Tel. 020 8920 3721

Email: breragardens1@btinternet.com

ACCOUNTANTS FOR SMALL BUSINESS

At TaxAssist Accountants we specialise in supporting small businesses. We can help with:

- Self Assessment Tax Returns
- Business Accounts
- Corporation Tax
- Bookkeeping and VAT
- Business Start-ups
- Company Formations
- Payroll and HR
- Help with Finance Raising
- ...and much more.



020 8883 5258

www.taxassist.co.uk/eastfinchley

East Finchley Baptist Church

Just off the High Road in Creighton Avenue N2

Sunday Mornings at 10.30 am

For more information

please contact the Church Office

Tel: 8883 1544 (Minister: Simon Dyke)

Visitors always welcome

Holy Trinity Church

Church Lane, East Finchley

Church of England

We're a warm and friendly congregation who look forward to welcoming you

Sunday Parish Communion at 10.00 am

Children's Sunday Club ♦ Meet over coffee after church

Michael Stanway is happy to answer any enquiries:

Tel: 020 8346 8591

www.holytrinityeastfinchley.org.uk

Midhurst Butchers

Certified organic meat at reasonable prices

Free-range poultry

Home-made sausages

(including Boerwors)

2 Midhurst Parade,

Fortis Green, London N10

Tel. 020 8883 5303



YOUNG ARCHER

Delightful diversity at Newstead

By Helen Drake

On a gloriously sunny afternoon on 5 July, Newstead Children's Centre in Fallows Close put normal service to one side for the afternoon to throw an international party with music from hip hop to Bangla.



Happy smiles at Newstead Children Centre's international party day.

Cricket champions lift the cup

Five schools and six teams attended the annual Year Nine competition hosted by Christ's College in East Finchley. In a round-robin tournament some entertaining cricket was played by all teams.

Christ's College were the ultimate champions, defending the title they won last year, followed by Fortismere A, Finchley Catholic High, Compton, Fortismere B and Whitefields. Congratulations to the winners and to all the players for a sporting competition.



The CCF Cricket champions.

With a huge variety of home cooked food on offer including traditional English cucumber sandwiches and cream teas, Polish cake, a wonderful selection of Greek and Indian dishes, and with a bit of pizza and fruit thrown in for good measure, no one went hungry.

Centre manager Sajni Sharma said: "The idea for the party came from our parents themselves who wanted to learn about each other's cultures and the whole event was planned by them. Everyone, including staff and children, came in their traditional cultural clothes and seeing all the outfits and colours together really brought home to me how diverse our community is and how much we should celebrate this."

Activities for children included storytelling, biscuit decorating and henna painting while their parents got some exercise in the Zumba workshop or learnt some African dance.

Two consultations took place during the afternoon, one from Newstead itself asking parents to rate their service and one from the Big Local project asking for ideas on how to improve the area. Sajni said: "I'd like to thank the Big Local for their support and look forward to continuing the relationship over the course of the project."



The Oak Lodge children enjoy their sailing holiday.

Oak Lodge students on the beautiful briny

By Teresa Ellis

In July, 22 students from Oak Lodge Special School, off East End Road, tasted the freedom of the open sea on an adventure holiday to the Isle of Wight.

They stayed in Cowes at the UK Sailing Academy, a charity set up by local businessman Noel Lister, which aims to advance the education and physical, mental and spiritual development of disadvantaged children from anywhere in the UK. The location was perfect for the youngest students, as many of them had never been able to go on holiday away from their families before.

The staff and instructors were fantastic and all of the students were so brave and enthusiastic about completing the different activities, which included paddle boarding, windsurfing and kayaking, developing independence skills and building their confidence by trying new things and working together.

The children said: "It was awesome, can we come back next year?" Everyone said they loved the water sports, the disco and the delicious cooked breakfasts!

This trip would not have been possible without a donation from a small East Finchley charity. The staff team would like to thank everyone for their kind support in enabling what could be a once-in-a-lifetime experience. At the same time, the trip provided families with much needed respite, and they have also passed on their thanks.

If you would like to sponsor a student for a trip out or a residential journey, please contact the school on 020 8444 6711, or online through www.hearts-of-oak.org

Headteacher takes a soaking

Holy Trinity C.E. Primary School enjoyed a super summer fair on Saturday 29 June. Organised by the enthusiastic Holy Trinity School Association, the fair successfully raised over £3,000 for the school.

It was no surprise that throwing soaking wet sponges at their sporting head teacher Tim Bowden was particularly popular.

Leya and Cerys from Year 4 reporting on the event said: "It was a nice summer's day, perfect for a fair. There were many stalls to choose from like: coconut shy, decorating biscuits, pocket money toys, tombola, book stall, soak the teacher, a very yummy cake stall, a bouncy castle for the little ones and lots, lots more. We even had our very own freshly made popcorn, with three different flavours: strawberry, blueberry and banana."

"At the end of the fair, there were a few different types of raffles like, name the teddy, where you could win the teddy (actually a Kangaroo), you could also guess the amount



Headteacher Tim Bowden gets ready for a soaking at Holy Trinity's summer fair.

of sweets in the jar, you could win a big crystal and then there was the main raffle, with lots of good prizes."

Many thanks to Haven Estate Agents who sponsored the house boards, Apollo construction who donated 1st prize

on the raffle, Domino's Pizza who provided pizzas for the children's lunch boxes and to Green Watch from Finchley fire station who allowed the children the rare treat of exploring the fire engine and sounding the siren!

A friendly welcome awaits you

EAST FINCHLEY METHODIST CHURCH

197 High Road, London N2 (opp. Creighton Ave.)

tel: 0208 346 1700

www.eastfinchleymethodist.org.uk

Sunday service at 10.30 a.m.
With Crèche and Young Church

Worship Music Social events Wheelchair friendly
e-mail: info@eastfinchleymethodist.org.uk Room hire tel: 020 8444 9887

Learn Circus Skills

Trapeze, tightwire, acrobatics, juggling & more!
Classes and workshops in East Finchley
for young people, adults & groups

www.AirborneCircus.com

020 8123 6261



Volunteer Amanda Bolton and manager Leslie Cavendish. Photo Diana Cormack

Volunteers keep All Aboard afloat

By Diana Cormack

During National Volunteer Week in June Leslie Cavendish, who runs the All Aboard charity shop in the High Road, contacted *THE ARCHER* to tell us about some of their volunteers. "Most of them are women," he said. "For some reason, that seems to be the case in charity shops."

At the time of writing there are two teenage schoolgirls, one from the Jewish Free School on work experience and the other from Fortismere for the Duke of Edinburgh Award Scheme. A Brazilian teacher of Spanish works there to improve her English, as well as a headmaster's wife and a professional seamstress who has a hearing problem. But one volunteer rates particularly highly with Leslie. "She's my shining light," he said.

Amanda's story

Amanda Bolton, who lives nearby, was introduced to All Aboard by her care worker in the hope that she would benefit from working there. How right she was! It has given Amanda something to get up for in the morning, increased her confidence, helped her to make friends and even inspired her to write about it for *THE ARCHER*.

Here is a little of what she wrote:

"I like it so much that I am able to have my picture in the charity shop newspaper to let Mencap see how I am getting on with all the steaming and the different things I do. I have a laugh with Leslie. He can be very funny. Sometimes I pick up the donation bags from the counter to put them in the back to be sorted for rags or to go to other countries like Africa or to be put out for people to buy."

"Since I have been in the shop I have not been shy or nervous. I am very happy to work here. I cannot believe that I have worked so well and hope it will always be my hobby to work in the charity shop with Leslie."

Volunteers are always needed. If you're interested, call in at 124 High Road or telephone 020 8883 6773.

Reading challenge is a real page-turner

By Daniel Weir

The British summer is known for many things: rain and long school holidays being two that immediately spring to mind. For young families in East Finchley it's also synonymous with the Summer Reading Challenge.

The scheme is aimed at four to 11-year-olds, and aims to ensure that they continue to develop their minds when school is out. This year the library has also been encouraging 14 to 18-year-olds to volunteer at their local library to help the young readers.

The scheme itself entails the youngsters reading six books over the holiday and this year it is themed around 'creepy house'. Last year 780,000 children nationwide took part.

Although the Challenge is already under way it's not too late to get involved as it runs until 9 September. Parents and carers can pick up a leaflet and have a look at the reading challenge's Facebook page for more information. Children interested in the scheme can chat, get recommendations and even enter competitions on the Challenge's website.

Teenagers interested in helping with the scheme should e-mail justina.gore@barnet.gov.uk and those who want more information can visit <http://readingagency.org.uk/children/summer-reading-challenge/>



Puzzle-ing appearance

Tilly Schwartz and her pony Puzzle were the perfect partners on a 12-mile cross-country ride round Buckinghamshire to raise cash for medical detection dogs.

The pair were out in the hot weather for three and a half hours on Sunday 7 July and came home very tired but very happy. Earlier Tilly, of Park Road, took Puzzle into Highgate Primary School, above, to tell the children about her good cause Canter for Cure.

Medical detection dogs are trained to sniff out breast cancer and many other diseases. They are also used to help epileptics and diabetics live independently as they can detect when fits and low-sugar moments are coming. You can help Tilly with a donation at www.justgiving.com/TillySchwartz

Fancy a summer evening run?

Are you a runner in East Finchley who would like to run with a group socially? The East Finchley running group, which has been going for six months now, goes out every Tuesday night and sometimes on Sunday mornings.

They typically run around 10K, incorporating runs up to Alexandra Palace, Highgate Village, Hampstead Heath and Golders Hill Park, sometimes followed by a drink or two in the Bald Faced Stag.

The group is ideal to join if you want to discover new running routes and get to know the local area. The routes tend to be generally 'off road' and incorporate the woods and parks in and around East Finchley and Hampstead Heath.

Some of the group join the Mornington Chasers Running Club on Hampstead Heath or Primrose Hill for track and hill training on Thursday evenings as well.

For more information call Nick on 07593 367134 or meet at 7pm on Tuesdays at East Finchley Tube.

KALASHNIKOV KULTUR

By Ricky Savage, the voice of social irresponsibility

Crystal balls

In the weird and wonderful world of an English summer it would great to be able to stare into a crystal ball and see the future. Not far into the future, not even as far as Christmas, but just far enough to know the winning numbers for the next Euro Millions megabucks draw. And there are a few other things I'd like to have known about in advance.

Back in May the Daily Excess announced that this was going to be a cold, wet summer with snow drifts outside Budgens, flooding in Cherry Tree Wood and six feet of mud at Glastonbury. And guess what, I believed them, bought wellies and hired a boat so I could sail down to watch the Stones. Oh for foresight, if only I'd known I'd not have got stranded on the M4 outside Basingstoke.

I bet blond Boris the Mayor wishes he hadn't believed the stuff about endless cold wet summers when he ordered his buses. If he'd known he'd invented the first double decker sauna he might have realised that being able to open the windows is a good idea when the temperature gets above 80. Or maybe not; he cycles and bikes have natural air-conditioning.

Had I known in advance that Andy Murray was going to win Wimbledon I could have left the country before I drowned in a flood of strawberries and sun cream. OK, it was a good bet that he would do it this year, but the point is I'd like to have known. Just as I'd like to know if the weather will be good for a barbie or if I should crank up the central heating.

Which brings me to the main event. By the time you read this you'll know what they're going to call the new royal baby. You'll know if you were right to bet your house on Victoria for a girl and Charles for a boy. You'll know the name of the doctor who delivered the child, have seen the look of shock and bewilderment on its parents' faces as they face the cameras and so will I. It's just that I don't know yet and I really want to know if they are going to go all modern or stay with the traditional approach.

So, will it be named Balmoral after where it was conceived, or something funky: Summer or Spring or Betty (Blue)? Will they go Norman with Eleanor or Tudor with Mary or Elizabeth? I reckon if it's a boy they should call it Ricky. But then I would, wouldn't I?

Your Holiday Starts Here....



Airport Transfers from £30

Heathrow £30

Stansted £45

Luton £40

Gatwick £63

Valid dates for special offer 18th July 2013 - 6th September 2013
Post codes included in special Offer N2 N3 N6 N8 N10 NW11
*Quote 'Summer Offer' for special rates to apply



Your Local, Quality Car service,
serving the local community since 1967

24 hour booking line: 020 8883 5000

prices shown are standard saloon prices only. £10 meet and greet charges apply when collecting from the airport



Regular Events

Sport & Fitness

- **Badminton** Weds eves 8-10pm all abilities, contact George 8349 0170 or John 8444 7163.
- **East Finchley Flyers running club**, Tuesdays 7pm at the tube station, 7k run and socialising. Nick 07593 361134.
- **Finchley & Hornsey Ramblers Group** Call Vivien 8883 8190
- **Glebelands Indoor Bowls Club**, Summers Lane N12. New and experienced bowlers welcome.
- **Keep fit for the Retired** on Wednesdays, Christ Church N12. Call Bridie 8883 5269
- **Muswell Hill Bowling Club**, Kings Ave, N10. New & experienced bowlers welcome. Tel: 8883 0433.
- **Pilates** in East Finchley, qualified teacher. Contact Dee on 8883 7029
- **Pilates class** Weds 3.30 & 7pm at Ann Owens Ctr, N2. Call Penny 8444 2882.
- **Pilates Beginners Classes** Tue 9.30-10.30am, Holy Trinity Church Hall. Michelle 07767 804 564
- **Tae Kwon Do** for children & adults at Finchley Lido Mon & Fri 7-9pm 07949 612 706. www.taekwondo-uktd.co.uk
- **Tai Chi** class at EF Methodist Ch, Weds 1pm. James 8883 3308 or james@taiji.co.uk
- **Tennis club** with four clay courts off Southern Road. Call 8883 7723.
- **Yoga, breathing & relaxation**. Weekly drop-in classes - N3, N6, N10. Phone Judy on 07956 375607.
- **Yoga**, pregnancy yoga, meditation classes. Call Sunnah 07941 321 772 www.stretchingpeople.co.uk.

Music, Dance & Creative Arts

- **Art Classes**. Call Henry on 8888 5133.
- **Ballroom Dance Classes**, Wednesday eves for beginners & improvers. St Mary's Church Hall, N3. 8444 0280.
- **Ballroom & Latin American Dance Classes** - beginners & improvers. Wed & Fri eve, Bishop Douglass Sch. 8207 2323.
- **Creative writing classes** in informal, friendly atmosphere. Tel Sallie Rose 020 8444 7217.
- **East Finchley Writers Group**, Weds at the Old White Lion. Contact Carola 8883 5808 or Lilian 8444 1793.
- **East Finchley Poetry Writing Workshops**. Monthly on Saturdays. Contact Dennis Evans 8346 9528.
- **Ladies Keep Fit** Class for over 50s. Tues 10.30-11.30am at Tetherdown Hall. Sheila 8444 0084.
- **Memory Lane Singing Club** - friendly singing club meets every Friday in Finchley. Call Valerie 8458 4508.
- **Over 50s Tea Dance** at Christ Church, North Finchley. Every Weds, 1pm. 020 8444 0280.
- **Learn to sing** at Finchley Methodist Church, Ballards La. Call 8888 4412.
- **Symphonic Wind Orchestra** Contact Caroline Egan 8340 2706
- **Traditional music** at TOC, Highgate Hill on 1st & 3rd Tue each month from 8.30 pm. Free. All musicians welcome. 07958 282898.

Clubs & Social

- **Bingo evening**, 8pm Sundays, at the Constitutional Club, The Walks, N2.
- **Bingo Club** Mondays 7-9 pm, Green Man Centre, Contact: Jan 8815 5452
- **Contact Lunch Club** Tuesdays at the Green Man. Call 8444 1162 to book.
- **French conversation** in small friendly group with native speaker. 8444 9395.
- **Friends of Cherry Tree Wood** www.cherrytreewood.co.uk or 8883 7544.
- **Haringey Recorded Music Society** informal meetings locally. Call David Moldon on 8361 1696.
- **LGBT?** 1st Weds every month in a local pub. Welcoming atmosphere. Email efinchleylgbt@hotmail.com
- **Muslim Ladies Lunch Club** 1st & 3rd Weds, Ann Owen Ctr., Oak La. Call 8432 1415 to book.
- **North London Bridge Club**, Muswell Hill. Contact 8348 3495
- **Northside Bridge Club**, EF Methodist Church, Thurs 7.30-11pm. 8346 8145.
- **Jewish Friendship Club** for over 60s, Tues 1-3 pm at Muswell Hill Synagogue, Tetherdown. Anita 8886 6140.
- **Muswell Hill Tetherdown Bridge**, contact 8883 4390



The Fortismere Community Orchestra in full flow.

A musical feast from Fortismere

Review by Barbara Palczynski

Fortismere Community Orchestra treated its audience to another evening of wonderful music on Saturday 6 July. The ethos of this orchestra is very much about 'community', welcoming talented musicians from Fortismere students and staff, parents of students, and local good amateurs from beyond the school.

Coordinating a rehearsal schedule for such a disparate group is no mean feat, and with an ambitious conductor programming a repertoire that demands dedication and time in its preparation, the orchestra delivers an astonishingly high standard of music.

Previous concerts have included big works such as Dvorak's *New World Symphony*, Beethoven's *Symphony No. 7* and most recently a collaboration with the Fortismere Community Choir performing Fauré's *Requiem*.

This latest concert opened at a brisk pace with Mozart's *Overture to Don Giovanni*. This was a refreshingly unusual opener, and the orchestra set out its stall with sparkling energy. The brooding, dark colours of this piece were an apt prelude to Beethoven's gargantuan *'Emperor' Piano Concerto No. 5*, performed by Sophia Lisovskaya. Despite a

few nervous errors she demonstrated her technical prowess; St Andrew's Church echoed with her lyricism, and the orchestra accompanied sensitively. It was a treat to hear this giant of giants and the piano was given an excellent workout.

Brahms' *Symphony No. 1* did not disappoint and the soaring tunes in the strings and harmonies in the brass and wind were always measured and musical, thanks to the consistently calm and shapely conducting of Thomas Gregory.

Musically led by Rebekah Allen throughout, this concert gave food for thought about how best we can nurture musical talent within our community. The next concert is on Saturday 23 November, with Mozart's *Sinfonia Concertante* and Sibelius *Symphony No. 2*. To find out more about the orchestra's concerts and vacancies, visit www.fortismeremusiccentre.co.uk

Jewish Lives, Britain 1750-1950

Book review by Marian Bunzl

Melody Amsel-Arieli is an Israeli-American amateur genealogist and professional writer. Her book tells the stories, over two centuries, of nine young men and one young woman from Europe and the Russian Empire, who came to Britain to start a new life.

Some were fleeing persecution: the Inquisition in 18th Century Portugal, the pogroms in 19th century Bessarabia, the 20th century Holocaust. Others left to avoid other problems of anti-semitism and poverty.

Ms Amsel-Arieli provides an object lesson in researching family history. Pieced together from personal memories, family papers and official records, these young people's experiences spring to life vividly as we learn about their individual origins and the particular socio-economic forces that pushed them to leave.

They all faced early struggles in their new country: overcrowded housing, menial jobs, sweatshop working conditions, before the eventual founding of their families and the gradual growth of prosperity and adaptation to life in Britain. Some left lasting businesses, others handsome public buildings.

These personal stories trace the growth of today's Anglo-Jewry: quietly following their religion as well as taking full part in the society of the country that welcomed them. Although this is a story of Jewish immigration and integration, it will resonate with the rest of contemporary British society.

Jewish Lives, Britain 1750 - 1950 by Melody Amsel-Arieli is published by Pen and Sword Family History, priced £12.99

A teenager's search

Muswell Hill crime writer Lawrence Estrey has published a second novel, this time delving into the dark and desperate world of a teenage boy searching for the father who abandoned him.

Last summer, Lawrence (pictured right) self-published his first book *Secrets*, an adult psychological thriller. The new novel, called *EggHead*, is targeted at a young adult audience.

Lawrence said: "I completed *EggHead* in about nine months and found that my previous experience with my debut novel helped when it came to structure and planning.

"However, I found the writing process draining at times, particularly when it came to depicting the bleak and lonely coastal surroundings that make up some of the setting,



and I would sometimes consider abandoning the story."

Again self-published, *EggHead* is available on Amazon and Lawrence is already planning to release another novel for young adults.

Clinic marks 10 years in business

By Linda Sansom

Doing business in the High Road is a clinic that is celebrating 10 years helping customers with their skin problems.

Sk:n clinic recently had a revamp to bring it into line with the country's 40 clinics within a company that has been in existence for over 20 years. One of the smaller branches, it nevertheless employs highly experienced doctors and staff who use the latest clinically proven technology and products.

Manager Katie King explained that the focus is on the medical rather than the beauty aspect. It is no good going to Sk:n for a massage, facial, or a manicure or pedicure, because they don't provide them. But if your skin is looking tired or dull, or you are troubled by scars or acne, then they can help.

"Much of our work is with mole removal and checks, and we are really trying to promote that," said Katie. "We work

with the British Skin Foundation and Cancer Research, and we abide by the policies of the Care Quality Commission and are on the 'Treatment you can Trust' register of the Independent Health Advisory Service."

This particular branch of the company also treats clients from the age of 16, and therapist Dawn explained that they have a lot of teenage customers as well as those in their thirties and forties, although all ages and ethnic groups are among the clients.

All treatments start with a very detailed consultation that includes a study of the client's skin using a special scanner. *ARCHER* readers can receive a 20% discount on all courses and treatments until the end of September on production of the newspaper.

What's On... E-mail your listings to: the-archer@lineone.net

Wednesday 7 to Friday 16 August

• Shooting Stars Theatre Company presents William Shakespeare's *A Midsummer Night's Dream*. Fresh contemporary version with Puck as central puppetmaster and lovers are teenagers with attitude. The Tea Lawn behind Lauderdale House, Highgate Hill, Waterlow Park, London N6 5HG, 7pm (ends 9pm). Chairs: £14 (£12 concs) or Picnic Lawn: £12 (£10 concs). Box Office: 020 8348 8716 and <http://www.lauderdalehouse.org.uk>

Saturday 10 August

• **Battle of Barnet**: guided walk with City of London guide Paul Baker. Meet at junction of Great North Road and Hadley Green Road at 11am. Contact Paul on 020 8440 6805 or www.barnetwalks.talktalk.net

Sunday 18 August

• **Finchley Outward Bound, The Walk**: fascinating walk exploring disused railway around Mill Hill. Meet outside Mill Hill East station at 11.45am for 12 noon start. Distance to lunch stop 1.8 miles, total

distance to finish 4.2 miles. All welcome but £3 donation requested from non-society members. Details: 020 8346 5503 or email: mikegee1968@gmail.com

Saturday 24 August

• **Tree Walk in Coldfall Wood**, led by Iain Loasby, local woodsman. Meet 2.0pm, middle gate to wood, Creighton Avenue. Free but £3 donation appreciated. Booking advised: Krishna, 020 3411 5376 or info@coldfallwoods.co.uk

Sunday 1 September

• **Fabulous Finchley: guided walk** with City of London guide Paul Baker. Meet Finchley Central tube station (Ballards Lane exit) at 2.30pm to stroll through history, including East Finchley. Contact Paul on 020 8440 6805 or www.barnetwalks.talktalk.net

Sunday 8 September

• **Muswell Hill Festival**, Cherry Tree Wood, in aid of The London Centre for Children with Cerebral Palsy, 12-6pm. Stalls, rides, games, donkey derby and lots of family fun.



Letters to the editor...

A library in your own home

Dear Editor,

I read in *THE ARCHER* about Barnet Borough Talking Newspaper. I wonder if your readers know of another service the borough provides for the handicapped?

This is the Barnet Borough Home and Mobile Library Service. If you are handicapped and unable to visit your library, every four weeks a librarian will come to your home to bring 12 books from a list of topics, authors and titles you provide.

I cannot praise the team highly enough for their pleasant and efficient service and their choice of books. If you are interested in joining, contact Richard Lynch on 020 8359 3901. It is a pleasure to applaud our council in view of all the brickbats they receive.

Yours faithfully,
Mary Atkinson,
Summerlee Gardens, N2.

Hard-luck stories

Dear Editor,

With reference to the article in the June issue of *THE ARCHER* about the fake Samaritan, my husband and I were stopped by a man in The Causeway at the entrance of East Finchley Station about 18 months ago with a hard-luck story of having his wallet and mobile phone stolen and needing money to get back to Southgate. A few weeks ago, the same man was in the same place with another hard-luck story to tell.

Yours faithfully,
June Randall,
Edmunds Walk, N2.

Stand up to rogue landlords

Dear Editor,

Following the appearance in *THE ARCHER* (April 2013) of my Soapbox article on rogue landlords in Barnet, I am pleased to report that I have received a visit from the local councillor who was interested in this matter.

To my surprise it was not necessary for me to reveal to him the identity of my landlord. The councillor did this himself and I had only to refrain from disagreeing with him.

Clearly the individual concerned has a fairly contemptible reputation among both tenants and local councillors, yet our community is obliged to put up with his activities.

If any readers are private-sector tenants who have serious problems with a so-called 'respectable' organisation on the high street, please do not hesitate to register your complaint with one of your councillors. You will probably not need to name your landlord, who is likely to be known already, nor will your identity be revealed.

Many thanks to *THE ARCHER* for their help in this matter.

Yours faithfully,
Chris Mathewson,
Park Hall Road, N2

Send your correspondence to: "Letters Page",
The Archer, PO Box 3699,
London N2 2DE or e-mail
the-archer@lineone.net.

Letters without verifiable contact addresses will not be printed. Contact details can be withheld on request at publication. We reserve the right to abridge letters for reasons of space.

Library volunteers celebrate

By Daphne Chamberlain

On a wall inside the former Friern Barnet Public Library someone has displayed a quotation: "The public library is where place and possibility meet". The building is now an official Community Library, leased by Barnet for two years to the local group who fought to save a library service for their community. Council Leader Richard Cornelius attended an open evening there last month, when the community group members were talking about their hopes of developing the service.

They have plenty of stock. People are donating generously, and Barnet Council is returning some of the former stock which had been taken away for the failed "replacement" library in the arts depot. The Council has also promised software for catalogues and reservations. Story sessions, book clubs and activities like yoga sessions are already running, and a community planning day was

scheduled for just after the open evening.

The Friern Barnet community, including local shops and trades people, are absolutely dedicated to making the possibility of a restored library an established fact. They have the support of everyone in East Finchley who signed the petitions to re-open the library, and everyone here who wishes them well.



Council Leader Richard Cornelius visits Friern Barnet Community Library Open Evening. Photo by Lucy Nowell

Etta Cowan, 1931 – 2013, a beautiful and spirited woman

By Michael Gentry

Etta Cowan, a well-known and popular local lady, died on 15 June from an unexpected illness that came suddenly on a day when she had been out and about as usual along the High Road with her little dog Honey.

Etta was on the variety stage in Edinburgh dancing in the chorus line at the age of 16, when she was known as 'The Pocket Venus'. Later, Etta did exhibition dancing, singing and cabaret work with a cousin on the keyboards.

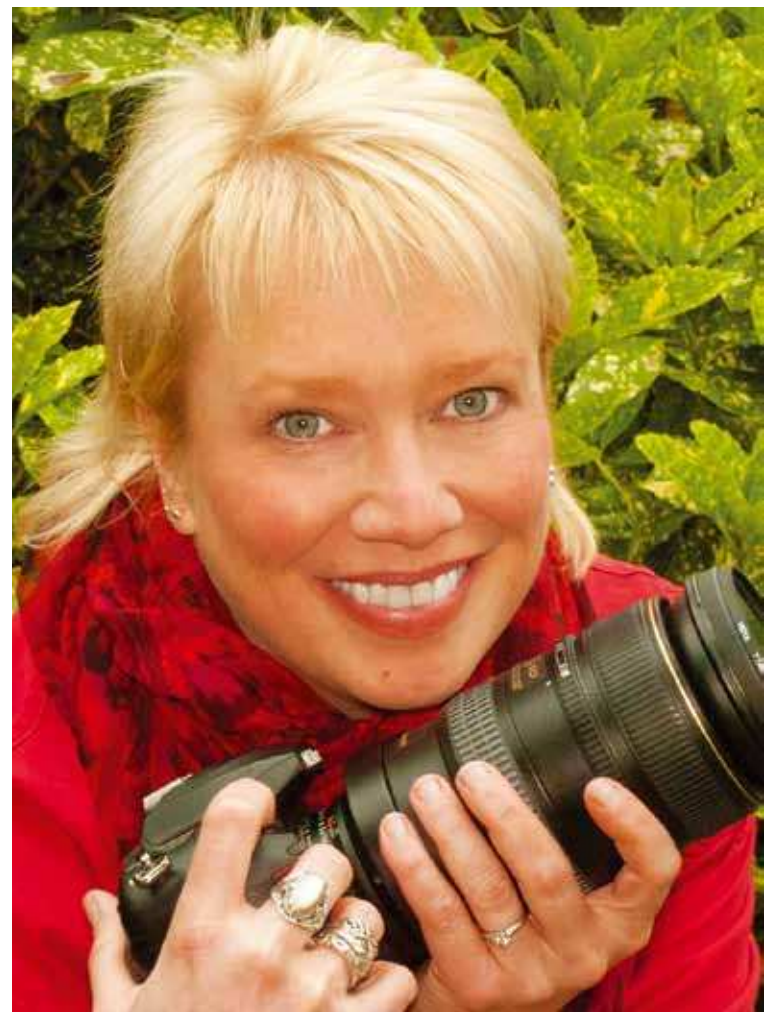
Married life found her in Harrogate where she opened two successful fashion and couture shops known as Sanmare after the names of her three children.

After moving to East Finchley in the 1970s Etta sought a new direction, eventually becoming a very highly regarded artist's model. She worked for many art colleges in Barnet, Stanmore and Harrow. Etta was the first ever and probably the only nude female life model at Harrow Public School

To her last days Etta was spoken of as "the best



Etta Cowan pictured on the High Road. Photo courtesy Michael Gentry dressed woman in East Finchley" and was usually accompanied by Honey ("Mummy's wee girl"). Etta was a personality and character whose lively chatter and humour will be sadly missed along the High Road. Honey will be cared for by Etta's companion of many years, Daddy Mycoll.



Portrait photographer Lynn Herrick

Portrait of a lady

By Sheila Armstrong

Chicago-born but living here for 19 years, photographer Lynn Herrick recently welcomed *THE ARCHER* to her new East Finchley studio. Using a digital SLR camera and many skills learnt over the years taking portraits of the rich, not so rich, famous and completely unknown, she has been taking pictures for quite a while.

Originally with a degree in art and photography, Lynn started out teaching early years children but now has a full time career in photography. Not surprisingly her shots of children really capture their individuality and she has the knack of getting children to relax.

Her own company Headshots specialises in shots of actors and other performers for Spotlight and other acting agencies (headshotslondon.co.uk). Much of her work nowadays comes from individuals want-

ing to establish a presence on the web, for example photos for personal websites, online dating sites, Facebook, and LinkedIn.

And if you hate any photo of yourself Lynn has posing tips, advice on clothes, and takes quite a lot of shots in the more informal setting of her garden. There are also many digital effects that can be added to the finished pictures.

Her work can be seen at www.herrickphoto.co.uk and she can be contacted at lynnherrick@gmail.com.

The Finchley Charities



Welfare Administration Assistant Required for a 6 - 9 month temporary contract with the potential to become permanent

**Reporting to the Welfare & Sheltered Housing Manager
30 hours per week, Monday to Friday 10am - 5pm
Salary £15,600 p.a., reviewed annually**

An excellent opportunity has arisen for an additional Welfare Administration Assistant to work closely with the Welfare & Sheltered Housing Manager at a local Almshouse charity based in Finchley N2. We deliver a high quality Sheltered Housing service to London Borough of Barnet residents that have a housing need.

Our aim is to provide secure and comfortable accommodation in pleasant surroundings which enable residents to live independently.

Candidates should possess good people skills, be computer literate, have previous administration experience and be able to handle resident/ applicant issues sensitively.

For further information and an application pack, please call 020 8346 9464 or email amanda.peters@thefinchleycharities.org.

Closing date 9th August 2013



Arthur the fox in the driving seat

Foxes usually keep out of the way of humans but a few of our four-legged friends are bolder than others. Take Arthur, the resident fox of Park Road. Residents regularly see him from 5.30pm onwards pottering from house to house and generally hanging around. Tania Schwartz, who took our photo, says: "He's quite bold and will probably come a little too close! He has a real air of Mr Fox from the story. The name Arthur just came to us, so when we see him we all shout 'It's Arthur!'"



Wildlife on my doorstep

Rhian Grey grew up in the High Road next door to Islington Cemetery without really appreciating the abundant wildlife inside its gates. Now she is making up for lost time by photographing the creatures for whom it is home. Some of her fabulous shots have been taken from her own back garden, which is right next to the cemetery. Others are the result of many patient hours waiting for animals to come out into the open.

Rhian said: "I managed to see a goshawk, a buzzard, a green woodpecker and a great spotted woodpecker. After many days in the cemetery and many sightings of foxes I finally got a decent shot of one half asleep on a fallen down tree, before he got up and left. Some other days I got to witness fights between crows and jays which was always interesting to watch."



Photos above and top left by Rhian Grey

Foxy makes light work of larceny

Love them or hate them, foxes have certainly been making their presence felt through the summer months. In the most recent East Finchley Allotments newsletter, Dawn Painter collected a number of reports from plottolders about one persistent visitor.

Ian says: "Foxy ran off with my gardening gloves this week as I tea-broke with my neighbours. So beware of putting anything down that may interest him. He got a short distance with my watch too."

From Richard: "The fox

has been nicking stuff from my allotment neighbours: gloves, a hand fork, a mobile phone, and it tried to make off with a handbag. They are finding it quite a pest since they can't put anything down. The animal doesn't respond

to being shoo-ed away. It's quite brazen and just stands there!"

Mary writes: "I like the dear old thing. I think he or she just wants to play and is having a laugh. I had a pair of the most beautiful white and black leather gardening gloves. They were so beautiful I never really wore them unless pruning a clean rose. And that sneaky creature stole one; it's a classy fox!"

Lynn reported a little while back that "a reynard ran off with one of my boots which was unfortunate as I'd planned to wear two on the way home. I have since taken to putting items I want to see again out of reach and closing the potting shed door."

On all this evidence, it appears the fox is attracted to leather or well-handled items that have plenty of human scent on them. Spare a thought for the residents of a small German town whose mystery shoe thief turned out to be the local vixen. More than 100 shoes of every kind were found around her den by a forestry worker. The shoeless residents were eventually reunited with their footwear and named the fox Imelda, for obvious reasons.



SECUREBASE

DOMESTIC COMMERCIAL INDUSTRIAL SECURITY

Est 1988

CCTV
Access Control

Intercom Systems
Intruder Alarms

Locks Doors
Safes Grilles



+ EMERGENCY
LOCKSMITHS

WHY NOT HAVE
Your Security Problems Solved!
A FREE ALARM SURVEY



020 8442 0660

112 High Rd • East Finchley • London N2

www.securebase.co.uk



STEWART DUNCAN OPTICIANS

126 High Road, East Finchley, London, N2 9ED
tel. no: 020 8883 2020

READY FOR THE SUN?

Transitions
Signature

CHOOSE FROM FREE PRESCRIPTION SUNGLASSES,
DESIGNER SUNGLASSES FROM £49 OR
FREE UPGRADE TO TRANSITIONS?
IT'S YOUR CHOICE....

Offer available when you purchase a new pair of spectacles. Free pair includes single vision lenses made to the same prescription as the glasses purchased. Upgrades are available.
This offer only applies when you buy a complete pair of spectacles for the usual low price. For more details speak to a member of the staff.

COLIN SCLARE

Sales & Lettings

119a East End Road, East Finchley, London, N2 0SZ



We require all types of property
for Sale and Letting, so please call us for a free market appraisal and discussion.
Competitive fees: 7% Letting fee 1% Sales fee (plus vat)
but more importantly, a quality service to you!

'Free legal expenses cover with every let'
please call for details.

Contact us on

020 8444 3351 www.colinsclare.co.uk sales@colinsclare.co.uk