

JEREMY LEAF & CO.

Professional Sales & Lettings
AT COMPETITIVE RATES
020 8444 5222
eastfinchley@jeremyleaf.co.uk

Local News is our Aim

THE ARCHER



GLH
www.glh.co.uk

020 8883 5000
CARS & COURIERS

February 2012 No. 220
ISSN 1361-3952

20p
where sold

A community newspaper for East Finchley run entirely by volunteers.



Esther Rantzen meets Bill Bodkin at the North London Hospice. Photo by Neil O'Shea.

Esther drops in to hospice

TV personality Esther Rantzen visited the North London Hospice on Saturday 14 January as staff prepared for a special fundraising push in Hospice Week 2012.

The NLH has launched a new Hospice 100 appeal, which is a challenge to old and new supporters to raise £100 each. Fundraising activities can be home-based, school-based, family-based and work-based.

Last year the hospice cared for 900 patients in the community, 300 inpatients at the hospice in Barnet, and 150 patients through day services. This spring will see the opening of the new purpose-built North London Hospice in Enfield, with specialist day services to complement its well-established inpatient services at

Woodside Park.

Esther Rantzen said she was delighted to support the hospice, adding that while people often know how vital the work it does is, there was a need to raise awareness of how vital donations are to help it carry on its caring work.

Grand raffle

Hospice Week 2012 runs from Monday 27 February to Sunday 4 March. There will be the annual grand raffle, with £1,000s in cash prizes, and a 'Free Will Week' with the help of many local solicitors.

NLH Chief Executive, Douglas Bennett, said: "This year is probably the most significant year for us since North London Hospice began 25 years ago. Many people don't realise that North London Hospice is a charity. We rely on the fantastic support of thousands of people and businesses every year to continue providing specialist end of life care. However, these are challenging times and in 2012 we need that support as we expand our work to provide new services and reach even more people in need of specialist care in Haringey, Enfield and Barnet."

For fundraising queries, call the fundraising team on 020 8446 2288. You can also visit www.northlondonhospice.org/how-you-can-help/donate

Free school plan for East Finchley

By Helen Drake and John Lawrence

Parents and campaigners battling for a better choice of secondary schools in East Finchley could take control by setting up their own free school. The Local Schools for Local Children campaign group is currently canvassing parents of primary school children for support for the move.

They propose to open a mixed, non-religious free school, to be called The Archer Academy, taking pupils from N2, N3 and NW11. The school's location would be decided later.

Free schools were introduced by the Government in 2010. They are taxpayer-funded and free to attend, as well as being non-selective and intended to address specific local needs. They can be established by charities, teachers, parent groups and businesses.

Avis Johns, from Local Schools for Local Children, commented: "We know that faith groups in the area are looking for sites for their Free Schools, and therefore, in order to maximise our influence over any decisions regarding local provision, we are submitting an application for a new secondary

school, The Archer Academy, designed to meet the specific needs of our community."

Shortage of school places

The free school is not the only option on the table. The campaign group is still working with Barnet Council and local headteachers to address what a recently published Scrutiny Panel report from Barnet Council identified as a lack of mixed community school places in N2.

The panel reported that Barnet as a whole was facing a shortfall of three forms of entry (90 places) by 2015/16, rising to 24 forms of entry (720 places) by 2020/21 if no action is taken.

The report was approved by the Business Management Overview & Scrutiny Committee on 9 January and passed to Cabinet for action. Cabinet was asked to "recognise the need to meet the demand for non-denominational and co-educational school places in the East Finchley and Garden Suburb areas" and instructed the Children's Service to "develop potential solutions to meet this demand".

Public meeting

As we go to press, the Local Schools campaign group had arranged a public meeting for 19 January with MP Mike Freer and East Finchley Councillor Alison Moore. For more information on the campaign go to www.localschoolsforlocalchildren.org.uk. To read the Scrutiny Committee Report in full go to <http://committeepapers.barnet.gov.uk/democracy/meetings/meetingdetail.asp?meetingid=6821>.

VICTORY AUTO SERVICES

Air-Conditioning - Recharge & Servicing

Mechanical repairs, tyres, bodywork, clutches, exhausts
MOTs by appointment

109 Fortis Green East Finchley London N2 9HR
Tel: 020 8883 9707 / 0023 Fax: 020 8482 9179

EVERYTHING ELECTRICAL

ELECTRICIANS
call us FREE on 0800 279 3463

LIGHTBULBS LIGHTBULBS LIGHTBULBS

100 watt incandescent bulbs - IN STOCK

Visit our website with online shop at www.everything-electrical.com

38 High Road, East Finchley, London N2 9PJ

Prime Locations The Right Choice

Estate Agents - Valuers - Residential Sales - Lettings - Management - Cyprus Properties
40 High Road East Finchley London N2 9PJ Tel: 020 8883 9090 Fax: 020 8883 8580
Email: enquiries@primelocations.co.uk Website: www.primelocations.co.uk

Call us for a Free Valuation. Family Business you can Trust.

PRICKETT & ELLIS

82 High Road
East Finchley
N2 9PN

020 8883 0033

highroadn2@prickettandellis.com

Estate Agents and Valuers - Established 1767

• Visit your community newspaper on-line at www.the-archer.co.uk •



THE ARCHER

PO Box 3699
LONDON N2 8JA
WWW.THE-ARCHER.CO.UK
e-mail: THE-ARCHER@LINEONE.NET
Voicemail (messages only)
0844 579 6949
then enter mailbox
number **75390**
for Advertising / Finance
or mailbox number **63450**
for Editorial / Enquiries.

PUBLISHED BY
*East Finchley
Newspapers*

CHAIR
Kevin Finn

COPY EDITOR
John Lawrence

EDITORIAL TEAM
*Diana Cormack
Daphne Chamberlain*

SUB EDITORS
*Ann Bronkhorst
Caroline Knell
Jeff Robson
Pam Kent*

PRODUCTION EDITOR
Alison Roberts

PICTURE EDITOR
Mike Rubens

FINANCE &
ADVERTISING
John Dearing

DISTRIBUTION
*Toni Morgan
Margi McAlister
Pam Kent*

PRINTED BY
Sharman & Co Ltd

*Thank you to The Bald
Faced Stag for providing
us with a meeting place.*

*THE ARCHER team wishes
to thank all the generous
people who give up their
spare time, in all weather,
to deliver the paper for us.*

Your contributions

If you have a story for us, please
contact us at the above address.

*Comments to THE ARCHER may
be published unless clearly
marked 'Not for publication'
within the text.*

Copy deadlines

*March: 10 February
April: 16 March
May: 13 April*

USEFUL TELEPHONE NUMBERS

Councils

Barnet Council:
Admin/Town Hall 020 8359 2000
Council Tax 020 8359 2608
Recycling & refuse 020 8359 4600
Primary Care Trust 020 8201 4700
Benefits Agency 020 8258 6500
Employment Service 020 8258 3900
Haringey Council 020 8489 0000

Hospitals

Barnet General 0845 111 4000
Coppetts Wood 020 8883 9792
Finchley Memorial 020 8349 7500
Oak Lane Clinic 020 8349 7000
Royal Free 020 7794 0500
St Luke's 020 8219 1800
Whittington 020 7272 3070

Health Advice

AIDSline 020 8363 2141
Alcoholics Anonymous 0845 7697555
Barnetdoc 0300 033 3777
Barnet MENCAP 020 8203 6688
Cancer Support 020 8202 2211
Carers' Line 0808 808 7777
Drinkline 0800 917 8282
Drugs Helpline 0800 776600
MIND 020 8343 5700
NHS Direct 0845 4647

OAPs' Advice

Age UK 020 8203 5040
Contact (N2) 020 8432 1415

Leisure

Alexandra Palace 020 8365 2121
East Finchley Library 020 8359 3815
Muswell Hill Odeon 0870 505 0007
Phoenix Cinema 020 8444 6789
Warner Cinema 020 8446 9933

Transport

Nat. Rail Enquiries 0845 7484950
City Airport 020 7646 0088
London Transport 020 7222 1234
National Express 08705 808080
Heathrow Airport 0870 000 0123

Crime

Emergency 999
Barnet Police 020 8200 1212
Mus. Hill Police Stn. 020 8345 2148
CrimeStoppers 0800 555111
Victim Support 0845 303 0900
East Finchley Safer Neighbourhood Team 020 7161 9014

Help & Advice

Barnet Community Counselling 020 8446 7460
Childline 0800 1111
Disability Info Service 020 8446 6935
Gingerbread 020 8445 4227
National Debt Line 0808 808 4000
NSPCC 0800 800500
Rape & Sexual Abuse 020 8683 3300
RSPCA Inspector 0300 1234 999
Samaritans 08457 909090

Planning Applications

Barnet Council

6 Aylmer Road, N2

Conversion of garage into a habitable room. New mono pitched roof to ground floor front elevation. Installation of 1.8m-high metal railings with sliding door to front elevation. Roof extension, including two front dormer windows and two rear dormer windows to facilitate a loft conversion.

5 Beaumont Close, N2

Alterations and extensions to existing garage roof, including dormer window and roof lights to provide habitable roof space.

9A Beresford Road, N2

Conversion of garage into a habitable room, including removal of garage doors and insertion of window to match existing.

61 Chandos Road, N2

Single-storey rear extension

2 Deansway, N2

Single-storey rear extension.

31 Deansway, N2

Extension to time limit for implementing permission Ref: F/00334/09 dated: 12/3/2009 for "Formation of a new basement".

11-59 High Road, N2 (McDonalds Restaurants Ltd)

Change of use of second floor from D1 (Non-residential institutions) to B1 (Business Office).

84 High Road, N2

Change of use of ground floor and basement from class A2 (Financial and Professional Services) to class A3 (Restaurants and Cafes). Installation of ventilation extraction flue to rear elevation.

222 High Road, N2

Formation of single storey side/rear extension including extended shop front, following removal of existing side extension.

34 Howard Walk, N2

Single storey side and rear extension to main dwelling, and single storey front extension to existing outbuilding to link outbuilding to main dwelling.

71 Leicester Road, N2

Part single storey rear extension.

Long Drive, 26A The Bishops Avenue, N2

Erection of single storey outbuilding adjacent to house, following changes to boundary line including new boundary treatment.

22A Sedgemere Avenue, N2

Roof extension to the first floor flat with four roof lights at rear to facilitate a loft conversion.

9 White Lodge Close, N2

Part single, part two storey rear extension. Two storey side extension. Alterations to roof, including front gable projection and raising the ridge line.

Haringey Council

110 Creighton Avenue, N2

Erection of rear dormer, with insertion of three roof lights to front roof slope.

179 Creighton Avenue, N2

Demolition of existing six-bedroom detached house and one existing garden building. Erection of a new six-bedroom detached dwelling house with basement level, car parking, and creation of a new crossover.

66 Twyford Avenue, N2

Erection of rear dormer window, with insertion of two roof lights to front roof slope.

21 Twyford Avenue, N2

Erection of single storey rear extension, addition of pitched roof to garage and conversion to habitable space.

5 Aylmer Road, N2

Erection of side and rear dormers

Rear of 39 Eastern Road, N2

Demolition of existing builders store and erection of part single/part two storey two bedroom dwelling

2 Twyford Avenue, N2

Replacement of front garage doors with bay window and erection of side single storey ground floor extension.

Don't get scammed

By Janet Maitland

Neighbourhood Watch has issued a warning about some very plausible scams. One involves someone using your name and address to order goods on credit from an online retailer. They pay for next day delivery so that they know within an hour or two when the goods will turn up. Then they call on you and remove the goods, saying they were sent in error and claiming to be working for the online retailer. The bill for the goods gets sent to you.

If you receive a parcel unexpectedly, open it. If you haven't ordered the goods, contact the retailer and take their advice. Don't hand the parcel over to someone at the door unless you are absolutely sure it's a genuine error and that they really do work for the retailer.

Neighbourhood Watch has also come across a scam that works by phone. The caller pretends to be from Microsoft (or your email provider, or your virus software company) and informs you that they have detected a virus on your computer, or that your account is causing errors on their computer. They then try to talk you into downloading some software to rectify the problem. But if you follow their instructions you will be giving them complete access to your computer.

Protection

Remember that companies like Microsoft or Norton will never ring you about your computer. Similarly, banks never send emails asking you for your account details or passwords.

If you think you are being targeted with an online, telephone or postal scam, you can put key details, such as a phone number, or a company name, into your internet search engine, followed by the word 'Scam'. If it is a scam, there's a good chance you'll come across a warning about it.

You can also contact Barnet Council's trading standards department for advice on 020 8359 2178. Alternatively, call Consumer Direct on either 08454 040506 or 020 8181 8956.

THE ARCHER needs you!

If you live on The Grange and enjoy reading *THE ARCHER*, would you like to deliver it to your house and the house next door? We need volunteers to help deliver to The Grange once a month. Rounds should take no more than 20-30 minutes and the papers will be delivered to your door. Volunteers who live off The Grange are welcome too.

If you can help, or would like to know more, please email the-archer@lineone.net or call *THE ARCHER* on 020 8883 0433.

ROBIN KIASHEK

BSc (Hons) Ost Med

OSTEOPATHY in Fortis Green

including the Perrin Technique for Chronic Fatigue Syndrome/ME, (Western Medical) Acupuncture Nutrition, Life Coaching/NLP and Autogenic Training

52 Twyford Avenue
Fortis Green
London N2 9NL

020 8815 0979
07956 213 759

www.robinkiashek.co.uk



Piano Lessons

Theory, composition, arranging, song-writing, keyboard harmony, GCSE & A level music

James Drew-Edwards LTCL GTCL PGCE(music), CRB checked
email: james.drewe@virgin.net phone: 020-8444 0655



Sports talks as bidders line up for Stanley Field

By Daphne Chamberlain

We now know the names of the three bidders for the site of Stanley Road Playing Field. They are Fairview Homes, Croudace Homes and One Housing Group. All three had a preliminary meeting with Sport East Finchley and Barnet Council on 18 January. Each bidder offers some sports facilities as well as housing.

Sport EF's Roger Chapman told *THE ARCHER*: "We are now in a negotiation, where Barnet Council is working with us and the three developers to see if they can amend their bids to meet further some of the sports requirements we have."

"We have committed to nothing except having discussions to find out what the bottom lines might be. No conditions have been imposed on us. The council anticipates getting in a renewed set of bids from those already selected within three months after discussions with us."

Backers might reject mixed development

As we reported last month, Barnet did not agree with Sport EF's bid to develop the whole site as a multi-sports facility, but did recognise "significant levels of public concern and involvement".

Sport EF's business plan

was backed by several sporting organisations; how these potential backers will react to a mixed development is not known at the time of writing. Roger Chapman told *THE ARCHER* that Sport EF would be meeting them later in January.

Local involvement

Meanwhile, it is important for local people to stay involved. Sport EF need to know our views on how they should go forward. They will report back on all emerging proposals at a public meeting on Thursday 23 February, 7.30-9pm, at the Constitutional Club, The Walks, N2.

Keep up-to-date on www.stanleyroadsports.org and www.facebook.com/pages/St Stanley-Road-Playing-Field-East-Finchley/200473973296586, and come to the meeting to make your views known.

Waitrose on the Broadway

Waitrose is coming to Muswell Hill. Haringey Council has approved the supermarket's application to take over the site of the Slug and Lettuce pub/restaurant on the Broadway.

The Muswell Hill and Fortis Green Association have asked the Council to make it a condition that the main delivery will be before 7am. This is to safeguard the safety and convenience of passengers using the very busy bus stop just outside.

MHFGA have also asked whether consideration has been given to making smaller deliveries at the rear of the premises.

As long-time readers of *THE ARCHER* may remember, East Finchley had a branch of Waitrose in the 1920s.



Martin School headteacher Helen Morrison (centre) celebrates an 'outstanding' Ofsted result with staff and pupils.

Ofsted success for Martin Primary School

By Frances Buckingham

Teachers, governors, parents and children at Martin Primary School are celebrating after being judged to be 'outstanding' by Ofsted. Only 6% of primary schools in the country received this highest grading.

At the inspection in December 2011, Ofsted described the headteacher's leadership as "inspirational" and praised the "exceptionally strong" support provided by the leadership team and the governing body.

Inspectors found the majority of lessons observed to be outstanding, commenting that "pupils learn very well because teachers plan work that is interesting and fun" and noting the "rigorous approach to monitoring the quality of teaching and learning".

As a result, inspectors found standards to be "above

average" and pupil progress to be "consistently outstanding", including for those with special educational needs, new to English and those deemed vulnerable. Inspectors particularly praised language development in the Early Years.

In addition, the school could not have scored higher for safeguarding and personal development. The inspectors described safeguarding as "exemplary", a very rare judgement. Inspectors praised the "harmonious community" created by the school, and also described pupils' behaviour and attitudes to learning as "exemplary". They also recognised that parent and carers held the school in very high regard and were "incredibly supportive of the school".

Delighted reactions

Helen Morrison, who took up her post as headteacher in September 2008, said: "We are delighted with the fabulous

judgement which is a result of the dedication and hard work of the whole school community over the last three years. When appointed I knew that this school had the potential to be 'outstanding' and I am thrilled that we have achieved this."

Catrin Dillon, Chair of Governors, added: "The verdict of the Ofsted inspectors echoes what our school community has felt for a long time. The governing body is delighted that the exceptional work of Helen and her team has been recognised in this way."

The Archer needs volunteer distributors for the following roads:

Blandford Close, Cornwood Close, Greenhagh Walk, Lyttleton Road (part), Manor Court, Aylmer Road and Mansfield Heights

Distribution takes place once a month. A typical round takes 30-45 mins to deliver. For details contact 020 8883 0433 or the-archer@lineone.net

KF COMPUTERS & IMAGING
93, High Road, East Finchley, N2 8AG

COMPUTER & LAPTOP REPAIR & SALE...
PRINT YOUR OWN PICTURE ON T-SHIRT, CUP, MUG, CAPS...

Wedding Photo & Videos
Studio Photos & Hire
Web Design
Internet Access Available From 50p Only
Photo Copy & Printing Services
Colour & B/W Up To A3

NEW SERVICES

02088159898

KATHRYN SCORZA

**HYPNOTHERAPY
SOUL THERAPY
SPIRITUAL HEALING**

Kathryn Scorza

Registered Hypnotherapist
Soul Therapist
and Spiritual Healer

Contact me for more information or to make an appointment

07703 404 839
kathryn@kathrynskorza.co.uk
www.kathrynskorza.co.uk

Hypnotherapy offered for a wide range of issues including only weight loss and smoking cessation

EAST FINCHLEY ELECTRICAL
Electrical Results

Electrical design layout, new construction, remodels, additions

Sound systems, lighting controls, smart home technology, landscape lighting

24 hour emergency service

LOCAL COUNCIL APPROVED CONTRACTOR & RETAILER

020 8444 5630
info@ef-elec.co.uk

Nicky Sharp
Osteopathy Clinic
Cranial and Structural Osteopathy and Acupuncture
All Major Insurers Accepted

For consultations and appointments:
Telephone: 020 8815 9433

260 East End Road www.nickysharposteopathy.co.uk
London N2 8AU e-mail: info@nickysharposteopathy.co.uk

Josephines
EXPERTS IN CREATIVE FLORAL DESIGN

Whether it's flowers, a bottle of champagne or even just a box of chocolates, what better way of saying 'I Love You!' this **Valentines Day** (Tuesday 14th February).

Place your **Orders Now** to avoid disappointment,
Love to all xx

www.josephinesflowers.co.uk Tel: 020 8444 9569/020 8883 3598 60 High Rd, East Finchley, London N2 9PN



Jubilee street parties made easy

The official celebrations for the Queen's Diamond Jubilee are four months away and everyone has the chance to bring the party to their street. Barnet Council has promised to cut the paperwork for any residents who want to throw a street party over the jubilee weekend of 2-4 June.

It follows the success of 54 street parties held in Barnet last year to mark the marriage of the Duke and Duchess of Cambridge. Residents in Strawberry Vale, Hertford Road and Leicester Road were among those in East Finchley who hung out the bunting.

Now is the time to act if you and your neighbours want to apply for a temporary road closure. Barnet Council says it will make arrangements as easy as possible by minimising the necessary bureaucracy and covering insurance costs. Find further information at www.barnet.gov.uk/highlights/jubilee-street-party.htm

If you need to drum up

numbers in support of a party, you can do so via the council's Pledgebank website at pledgebank.barnet.gov.uk

Diamond Lunch

There's a second reason for holding a street party on the first weekend of June as the Diamond Jubilee coincides with the annual Big Lunch event, which encourages neighbours to get together and get to know each other. Find out more at www.thebiglunch.com.

And if your street party does get off the ground, let us know here at *THE ARCHER* and we'll do our best to picture it in the paper. You can email us at the-archer@lineone.net or contact us by phone or post using the details on page 2.



Regular quiz member Lucy made wonderful cup cakes as raffle prizes. Photo by Brian Hooper.

Fantastic fundraiser from Fortis Green

By Diana Cormack

When Brian Hooper launched his annual Christmas raffle in aid of Great Ormond Street Children's Hospital (GOSH) at the Old White Lion last year he doubted that, in the present economic climate, it would raise as much as in previous years. However, he was delighted with the final total of £4,100 which more than doubled that of 2010. It also meant that, since December 2008, Brian's Christmas raffles have raised £8,715 for GOSH.

Over the last three years he has organised raffles, quizzes and competitions at the pub next to East Finchley tube station, from which a variety of charities have benefited. He told *THE ARCHER* that in April 2010 £5,500 from the Tuesday night quizzes was shared between Animal Aid, Beacon Lodge, Holy Trinity School and the North London Hospice. In that same year a Guess the Weight of the Pumpkin competition raised £1,300 for Help for Heroes and in 2011 it raised £1,565 for the North London Hospice. (For details of the Tuesday night quiz phone 0208 883 6459).

Early promise

Former teacher Brian, who lives in Fortis Green, is a practising Christian and has also been involved in raising money for All Saints Church. His parents brought him up to care for others

and, at the age of 18 whilst at school in Wembley, he organised a sponsored walk which raised £300. That was an enormous sum in those days and must have been a sign of things to come because Brian's fund raising total since 2008 is an amazing £13,020.

However, Brian is quick to point out that he could not have done this without help. He is particularly grateful to the many local shops and businesses who regularly donate prizes. Their generosity in supplying over 120 prizes enabled him to sell nearly 3,500 tickets before Christmas. Other donations came from well-wishers to whom Brian also wants to express his thanks.

Readers may be pleased to learn that Brian's efforts have not gone unnoticed as last March he was honoured with a Barnet Civic Award.

Online petition for road safety

WALKSAFE N2 campaigners for improved pedestrian safety on Church Lane, High Road and Creighton Avenue have launched a new online petition following the discovery that Barnet Council's policy is to count signatures only on e-petitions available through the council's own website.

Campaigners said they did not know this until recently as there was no notification of this fact on the council's e-petitions page.

However, they are pleased to announce that they have more than 1,000 paper signatures (as of the middle of January) and are gearing up to reach 2,000 before presenting their petition to Barnet Council. Under council procedure, this will guarantee them a place on the agenda at a business overview and scrutiny meeting and an officer review of the policy.

Emily Burnham of WALKSAFE N2 says: "We believe that the scale of response testifies to the concern people share locally about these issues."

"At the same time, we believe that Barnet Council should formally agree to count e-petitions via other web services as this is an unnecessary obstacle to local democracy."

To sign the new petition, visit <http://petitions.barnet.gov.uk/WalksafeN2/>. If you have signed online already, please sign again on the new online petition so that the campaign does not lose your signature.

All Saints' Church, Durham Road, East Finchley Church of England

Sunday masses at 8.00 a.m. and 10.00 a.m.

Weekday masses at 10.00 a.m.

(Refreshments are served after mass on Sunday and Thursday)

Prayer requests are gladly accepted.

The Parish has a flourishing social life.

Contact the Vicar, Fr Christopher Hardy,
on 020 8883 9315.

All Saints' also has a strong musical tradition and an enthusiastic choir of both adults and children.

Experienced singers are always welcome.

Contact Geoffrey Hanson on 020 8444 9214.

<http://www.allsaints-eastfinchley.org.uk>



east finchley
smiles
expert general & cosmetic dentistry

NHS CHECK-UPS £16.50
(this includes x-rays where necessary)

**NHS EXEMPT PATIENTS AND
CHILDREN UNDER 18 ARE FREE**

new NHS list now open

member of the
BDA and the BDHF



smile with confidence

020 8444 3436

144 The High Road, East Finchley, London N2 9ED

www.eastfinchleysmiles.co.uk

Klages Plumbing & Heating Agency LTD.

CONTACT TELEPHONE No: 020 8346 7218 / 8636

KLAGE

A NAME IN PLUMBING FOR OVER 40 YEARS

Learn about breast-feeding

By Mandy Rabin

Although 74% of new mothers in the UK start breastfeeding, only 47% are still doing so at 6-8 weeks, despite most women having planned to breastfeed for longer, according to Department of Health figures.

Why is this? Possibly because there seems to be a nationwide lack of adequate breastfeeding support for new mothers, who are often confused by the conflicting advice they receive from health professionals.

This is why Emma Pickett and I, both lactation consultants who voluntarily run breastfeeding drop-ins at Highgate Family Centre, are now running ante-

natal breastfeeding classes for couples as well.

There is significant evidence that learning about breastfeeding during pregnancy is a key factor in increasing the length of time a woman breastfeeds. This is because after delivery, mothers are often so overwhelmed with recovering from the birth and the demands of having a new baby that many find it difficult to absorb new information.

But why would couples already attending antenatal classes need extra input on breastfeeding? At present, many classes allocate perhaps a couple of hours to breastfeeding. Our sessions go into more depth and detail, helping to prepare couples for a whole range of eventualities in ways that are fun, informative and interesting.

Courses will run at Highgate Family Centre, Gaskell Road, N6 4ED, over three weekday evenings, at a cost of £75 per couple, or as a condensed course on the afternoon of Saturday 3 March for £65. For further information, please phone 07866 937843 (Emma) or 07523 895416 (Mandy), email: emmapickettiblc@gmail.com, mandybreastfeeding@gmail.com.

AP

Exclusive in the UK to:
Gentlemen's Barbers

CRAZY BULL Hair Products

"You deserve the right
to have beautiful & stylish hair every day"

50 High Road, East Finchley, London N2 9PJ
t: 0203 441 8048





Crucial court hearing in parking campaign

By Diana Cormack

The outcome of a hearing at the Royal Courts of Justice on Wednesday 8 February is of vital importance to the Barnet CPZ Action group and its supporters. Solicitor David Attfield of Summerlee Avenue, represented by Martin Westgate QC, will ask the High Court for permission to take his claim against Barnet Council to trial. The group must win this hearing if the action is to proceed.

It is a public hearing which locals are encouraged to attend in order to convey the strength of feeling about this issue to the judge. Many residents object to Barnet having hugely increased the price of parking permits from £40 to £100 and the cost of visitor vouchers from £1 to £4 each. The group believes that these increases are unlawful, because the revenue generated would be used for road repairs throughout the borough instead of for controlling parking demands.

Last year their request for a judicial review was denied by a judge at the High Court who felt there were similarities with another case brought by a Barnet resident, which was also denied. However, the previous presentation of the case was on paper whilst this one is oral. David Attfield believes this will provide an opportunity to explain why Barnet Council's arguments don't stand up.

Consultants' advice ignored

He told *THE ARCHER*: "We are confident because the case is strong both legally and morally. Also, more information has come to light since the court last looked at this. Barnet engaged consultants to advise on CPZ charges. The consultants, having studied charges in other boroughs, suggested much smaller increases (£60 for a resident's permit and £2 for a visitor voucher). In imposing far larger increases, Barnet ignored their own consultants."

At the time of writing Barnet was holding consultations about their proposals to increase the present charges from March.

For more information on the campaign visit <http://barnetcpz.blogspot.com>. If you want to attend the hearing, email barnetcpz@gmail.com for details.



Donating or dumping?

Despite a notice on the door asking people not to leave their donations outside, it looks as though someone left most of their flat contents outside the All Aboard charity shop at 124 High Road one Saturday in January. All charity shops ask that donations are in good condition and only left when the shop is staffed. Photo by Diana Cormack.

Door-to-door scam

Barnet Boroughwatch has issued a warning to residents about people knocking on doors claiming to be collecting money for the YMCA. One resident in High Barnet reported a young man and woman refusing to show identification and then becoming aggressive. The YMCA has confirmed that it would not collect money door-to-door in this way.

Barnet Police advise anyone in the borough who experience this scam to phone 101 or their Safer Neighbourhoods Team and report it as soon as possible. Our SNT can be contacted on 020 7161 9014 or 07887 632767 or eastfinchley.snt@met.police.uk.

Driver disqualified after collision

By Janet Maitland

A local man has been disqualified from driving for 12 months and ordered to pay £400 in costs and compensation after he collided with a car on the High Road on 21 October. Lee Garcia appeared at Brent Magistrates Court on 9 January, where he was also fined £135 for driving without consideration, £135 for not having insurance, and £100 for possession of Class A drugs.

Garcia's BMW collided with a black Vauxhall Corsa just by the gates of Islington cemetery, turning it over. The driver, a woman believed to be



Photo by Paul Dearing

in her 30s, had to be freed by emergency services. Her injuries were not serious.



ALMAR BUSINESS SOLUTIONS

Accountancy | Payroll & Book-keeping | Tax services

Our Services:

- Year End Accounts
- Tax Return Services
- Bookkeeping
- VAT Return
- Payroll
- Tax Services
- Company Formations
- Service Charge Accounting

Tailored packaged services offered for:

- Start-Ups
- Sole Traders
- Partnerships
- Limited Companies
- IR35
- CIS Contractors
- Charities
- Non-residents

Why choose us?

We offer an honest and friendly service.
Fixed fees—no expensive hourly accountancy bills
Non-Jargon and straightforward advice
Reliable, honest and friendly accountancy service

For a **FREE** initial consultation, call **07894 473309** or email: info@AlmarBSL.co.uk

SUZANNA ADAMS

MCFHP/MAFHP
MEMBER of CHIROPODY ASSOCIATION

FOOT CARE

Toenail Maintenance Callus/Corn Removal
Fungal Infection/Veruca Treatment of Ingrown Toenail
Athletes Foot

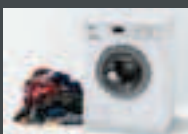
HOME VISITS

02081664599 **07789716633**
adams.footcare@gmail.com

Home Appliance - Sales & Repairs

Washing Machine Leaking? Dishwasher Not Cleaning?
Tumble Dryer Not Spinning? Oven Not Heating?

Looking for New Appliances? Freestanding or Built In?



AJL

020 8444 4303

sales@ajlappliances.co.uk
www.ajlappliances.co.uk

020 8365 3484

AJL Appliances Ltd

Miele

Cree Godfrey Wood Solicitors

Commissioners for Oaths

Hours: 9.30am to 5.30pm.

email: admin@creegodfreyandwood.co.uk

28 High Road, London N2 9PJ

Tel: 020 8883 9414 / 9496 0989

www.creegodfreyandwood.co.uk

Greene Driving School

East Finchley N2

From **£17.50** x 2 Hr lessons

Safe driving for life

Low Co2 footprint 114

Eco & Low Maint Tuition

Pass Plus 4 cheaper

Insurance. Greenedriving.co.uk

Call John M.I.M.I

0773 851 4406

CLEARLY

see

David Hillel

optometrist

FCOptom DCLP BSc(hons) MSc MPhil(optom)

119 High Road East Finchley N2 8AG 0208 444 2233

(near Kitchener Road, opposite Huntingdon Road)

David Hillel Burns, experienced independent specialist

Advice, help and care in eye and eyesight matters

Children's sight care

Wide range of new frame styles and designs

Advanced and hospital-level clinical assessment

Special contact lens fitting

Appointments from 8am to 7pm

Efficient, dedicated service

NHS available



The Market Place, East Finchley. The Andrew Forsyth Collection.

Time-travelling by postcard

By Ann Bronkhorst

In the 19th and early 20th centuries, we were a nation of postcard-buyers. With few people owning cameras, commercial photographers recorded even the unremarkable streets of East Finchley and the resulting postcards were very popular.

Luckily for us, Andrew Forsyth left his large collection of postcards to the Finchley Society. In a talk last year, at Martin School, Finchley Society Chairman David Smith showed slides chosen from the Forsyth collection to an enthralled audience.

A lost landscape

The earliest photographs dated from the late 19th century and revealed a largely rural landscape and a barely recognisable village. Fields stretched south towards Hampstead, Creighton Avenue was a new road cut through ancient woodland, Oak Lane was exactly that and Victorian children played at 'The old pond' (near East End Road) while sheep safely grazed nearby.

Some long-demolished buildings have left us their names (The Grange and Elmhurst), but of others there is no trace. It was good to see again the Black Bess tavern, the Causeway cottages, the Congregational church and, a more recent loss, Alder school, demolished after its pupils were absorbed into Christ's College.

Lido days

Gradually, the trolley buses and milk carts from our own Manor Farm dairy were replaced by more modern vehicles, and recognisable street scenes appeared. David invited us to supplement his

information about each slide, and some in the audience shared vivid personal memories. We were too young to remember the notorious bare-fist fighting at The Five Bells, or Lord George Sanger's final procession with an uncaged lion, but many of us greeted the slide of

crowds at Finchley Lido in 1976 with happy recognition.

The Andrew Forsyth Collection can be viewed at Avenue House, East End Road, by arrangement with Maggie Ferguson, Archive Manager for the Finchley Society, on 020 8349 4283.

Fifty years on in East End Road

By Lorna Roberts

We have lived at 191 East End Road, East Finchley since freezing February 1962 and wonder how many of our readers share our memories or will share the changes in their own patch. No 193 East End Road was one of a row of four cottages in a little lane. At the end of this lane, still called East End Road, was a row of three more cottages.

In one, with a long garden in front, lived Mr Tommy who kept rabbits. Next to him was the Ginn family and the last one had a family of three grown lads who had a huge white van. Alongside Mr Tommy's there were allotments, always busy. Next to them was a path to Stanley Road and the large Holmfield Garage. Every afternoon, my mother would go through it to Stanley Road over the railway bridge to the factory of the Merry Miller. All the broken or not perfect biscuits and cakes were on sale cheaply at a little window and back would come my mother with something lovely for the children's tea. For all of us around, the all-day smell of baking was mouth-watering.

No 193 has a massive wis-

teria that, since it was planted in the 1890s, has captivated passers-by with its beauty and perfume. In 1961, the next four cottages were demolished and houses were built, ours and 189. Next to that was a forge where horses came on Saturday mornings, to be shod. This went in about 1968 and became a carpet warehouse run by Mr Bowers, who later opened a carpet shop in the High Road, now a restaurant {the Cochin}. Now the old forge is a keep fit studio, whence tired people emerge, looking pleased with themselves. When we arrived, 193 was occupied by Malcolm and Peggy Kemp and they told us, when THEY first arrived in the early 1940s, a shepherd drove his flock, morning and evening, along by the Five Bells pub.

Why have they removed those lovely little bells?

A little further afield {in the High Road} was the Conrad Lewis foam rubber shop, where now stands the Santander bank. He was such a lovely man, always helpful. We could buy mattresses so cheaply then and he always had a good suggestion about anything else one wanted. I still have a small offcut he gave me to use as a needle and pin cushion. One day he retired, and told me of the cruise holiday he and his wife had planned. A year or two later, I chanced upon him sitting on a bench in Kenwood. We greeted each other. "And how was your holiday?" I asked. "We never went. My wife died suddenly, the day before we were due to go ..."

Happy memories of Finchley Lido

Trevor Williams, who used to run Williams Sports in North Finchley and Finchley Central, reads THE ARCHER regularly, even though he's now retired and living in Ringwood, Hampshire. He saw our article on Finchley Lido in June's issue and wrote in with his memories of sunny days by the pool in the 1940s.

My early memories include the occasion I was actually allowed to slide down the chute in the children's pool all on my own, and later to sit in the wonderful Art Deco fountains. When I was about 12, I'd learnt to swim (taught by a Mr Cavanagh at the old Squires Lane Pool, now a block of flats) and progressed to the adult pool.

I remember the rather archaic changing rooms, or rather cabins, and obligatory cold showers before entering the water. At least that helped to take away the sudden shock of the cold water in the main pool. The children's pool was always warmer, being shallow, and heated up quicker.

I was also a bit of a gymnast, so it was not long before I was jumping and diving off the 1m springboard; then I ventured up to the 5m springboard and jumped. That was really great fun. One August afternoon I ventured right up to the top of the 10m platform where a

number of youths were congregating, either posing or waiting to pluck up the courage to jump. Several times the tannoy requested that all non-swimmers and divers must vacate the diving boards, and some did. After the third warning, another message came over: "...and would that little boy in the blue trunks also come off the boards!" Well, that did it. I marched straight to the edge of the board and performed my very first swallow dive from the top of the 10m platform.

From then on I was hooked on diving, and the only swimming I did was to swim to get out ready for the next dive. Then, alas, some berk in the council decided to remove all the diving boards, and that was the very last time I ever went in the water at the Lido.

A few years later I was heavily involved in youth work. As President of Barnet's Council of Youth (in conjunction with Eric Burton, Barnet Youth Officer) we organised a grand barbecue with music and dancing on the grass area, and a soft drinks bar, and a few aqua activities for those brave enough to jump in the pool. A great time was had by all, and it was an annual event for several years.

Do you remember the glory days of Finchley Lido or do you have any other memories of life in East Finchley? Write to us at the-archer@lineone.net or The Archer, PO Box 3699, London N2 8JA.

Hear to Help

Are you having trouble with your hearing aid? Is that little gadget which should help you to hear doing just the opposite? Is it driving you mad, have you stopped trying to use it, or are you just getting by with it but maybe not getting its full benefits?

One thing is certain: you are not alone. This is why a free local service has set up clinics at Age UK Barnet. Hear to Help aims to assist adult hearing aid users to get the best out of their aids.

Clinics are held from 1pm to 3pm on the last Thursday of the month at the Ann Owens Centre, in Oak Lane, N2. There are also clinics on the first Friday of the month at the Meritage Centre, Hendon. To find out more, contact Gil Vamben on 020 8369 5325 or 07423 430383.

Holy Trinity Church Church Lane, East Finchley Church of England

*We're a warm and friendly congregation
who look forward to welcoming you*

Sunday Parish Communion at 10.00 am

Children's Sunday Club ♦ Meet over coffee after church
Michael Stanway is happy to answer any enquiries:

Tel: 020 8346 8591
www.holytrinityeastfinchley.org.uk

East Finchley Baptist Church

Just off the High Road in Creighton Avenue N2

Sunday Mornings at 10.30 am

For more information

please contact the Church Office

Tel: 8883 1544 (Minister: Simon Dyke)

Visitors always welcome



How to spot a dodgy builder

By Janet Maitland

Barnet Borough Watch has issued a warning about dodgy builders. These are the kind that call at your house because they've spotted some loose tiles on your roof or claim to have some Tarmac left over from doing a neighbour's drive, or that your TV aerial looks unsafe.

Such builders then charge huge amounts of money for shoddy workmanship or even for doing no work at all. They target the unwary and the vulnerable.

The best way of finding a reputable builder is to ask neighbours, friends and family for a recommendation. You can also use Trustmark by phoning 08454 040506 or visiting www.trustmark.org.uk. This is a government backed initiative to help consumers find reliable local tradesmen, supported by the Trading Standards Institute.

Ten top tips

Rated People (www.ratedpeople.com), another organisation that helps you find a reputable tradesman in your area, has some useful advice on how to spot a dodgy builder. Their first piece of advice is, in fact, to avoid anyone who knocks on your door, because good builders are busy builders. They don't

need, or have the time, to look for work in this way.

They also recommend not employing anyone in an unmarked van, anyone who is eager to quote quickly and cheaply without looking properly at the job, or anyone who says they can make the job cheaper as they've got leftover materials from another job. You can also recognise a cowboy builder because they never commit to a specific schedule and will probably ask for cash up-front. They will also rarely sign anything or give you a receipt.

Before anyone starts work you should always have a written note of what they will be doing and what it will cost. You should also have their full contact details, including a landline telephone number. If you are asked for any payment in advance for materials, the amount should never be more than 10% of the total cost.

Allotments for disabled people

The Finchley Horticultural Society has created a number of raised beds on the Gordon Road Allotment in Finchley, N3, for people whose disabilities prevent them from gardening at ground level.

Working with Disability Action in Barnet and other local charities, it is hoped this therapeutic resource will benefit wheelchair users, people with restricted mobility, the visually impaired and those recovering from strokes, amongst others.

The facility will be available this spring. Each bed is 7.2m long but can be sub-divided. The beds are 1.2m wide and of varying heights, with the area between them newly paved for easy movement. There are water supplies, lockable tool storage bins and compost bins.

Gordon Road is half a mile

from Finchley Central tube station. The site is close to the 382 and 326 bus routes. The site has parking, an accessible toilet, a rain shelter, meeting room, small seasonal shop, wheelbarrows, mowers, woodchip and compost. The annual cost is £6.35 rent per bed plus a service charge which includes water of £5 per bed. There is a 50% discount on rent for those over 60. Membership charge is £8 (£5 if over 60). There is a key deposit of £12. For more information, ring Andrew Brown on 020 8346 5011 or email a.brown@cvni.org.uk



The library inauguration. Photo by Gina Bailey

Ethiopia library opens its doors

Readers may recall articles written over the last two years about the work of the Aysanew Kassa Trust in Azezo, Ethiopia, especially the fundraising activities for a public library and internet cafe.

This project was very generously supported by St Mary's Catholic Church in East Finchley during 2010/11, where the congregation gave a huge boost to help the completion of the project.

The library was inaugurated with great excitement by the local community in Azezo in October 2011 and 12 friends from the UK were present. Jean Bailey, of East Finchley, chairman of the AKT, formally handed it to the local govern-

ment officials to run on behalf of the people at a very lively ceremony.

A 20-foot container carrying books, educational materials and personal computers is being shipped over the next couple of months.

If you want to know more about the Aysanew Kassa Trust activities, you can visit www.aysanew.org.uk. Jean will also undertake talks to groups and can be contacted on 020 8883 8722.

Credit union offers safe finances

The North West London Credit Union has launched a savings and loans service for Barnet residents.

Based in East Finchley's Green Man Centre, Strawberry Vale, the Credit Union is an alternative to high street banks and unsuitable credit agents in the area. Barnet Council employees are part of the scheme and entitled to join the CU directly through payroll deduction schemes. More than £3.5 million has gone out on loan so far. To find out more, visit www.nwlcu.co.uk or telephone 020 8200 0770.

Midhurst Butchers

Certified organic meat at reasonable prices
Free-range poultry
Home-made sausages (including Boerwors)

2 Midhurst Parade,
Fortis Green, London N10
Tel. 020 8883 5303

Japanese Acupuncture & Shiatsu

Gentle, dynamic and effective

For more information please phone or visit my website
www.fionahurlock.com

FREE 20min consultation

Ph 07795203107

Fiona Hurlock MACS MRSS DAc
UTOPIA 1a Leicester Mews, N2 9EJ

Human Resource Solutions Plus

Helping you to manage, train and develop your employees at a commercially sensible cost.

www.hrsp.net

Richard Pell: info@hrsp.net • PO Box 27013, London, N2 0WX



brera gardens

- garden design
- hard landscaping
- soft landscaping
- indoor plants
- maintenance
- irrigation systems
- East Finchley based

Mob. 07939 557 934

Tel. 020 8365 3615

Email: breragardens1@btinternet.com



Wendy Longworth & Associates physiotherapy practice offers a variety of treatments at the clinic, or off-site, in patients homes, nursing homes, private hospitals and other organisations.

- Back Pain
- Neck Pain
- Whiplash Injury
- Sciatica
- Sports Injury
- Frozen Shoulder
- Arthritis
- Tennis Elbow
- Sprain or Strain
- Rehabilitation
- Neurological
- Stroke

www.eastfinchleyclinic.co.uk

020 8883 5888

2-3 Bedford Mews Bedford Road London N2 9DF

"Too small for a big Accountant?"

"Then you are just right for us."

TaxAssist Accountants were set up specifically to support small businesses and individuals in all accountancy and tax matters.

For a FREE initial meeting, call us on 020 8883 5258 or visit us at 209 High Road, East Finchley



'The Small Business Champions'

TaxAssist Accountants is a national network of small business accountants

TELEPHONE FAULTS REPAIRED

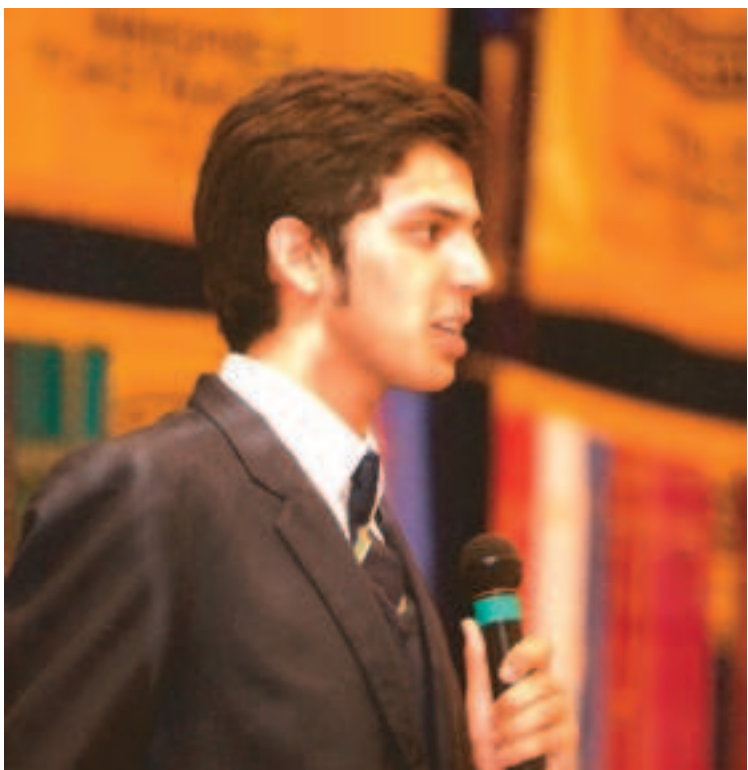
50% CHEAPER THAN BT * the POST OFFICE * TALK TALK etc
HOME * OFFICE * FACTORY
LINES * EXTENSIONS * EQUIPMENT - TESTED & REPAIRED

Call RON COLLINS 0208 883 9325 * 07748 278728

email: roncallsaver@yahoo.co.uk



YOUNG ARCHER



Tejas takes the spotlight

By Laura Wheadon

The weather's cold, Christmas is a dim and distant memory, and we're still in the grip of a recession. If, like me, you're in need of a bit of light relief to cheer the winter evenings, then look no further. Aspiring stand-up comedian and East Finchley resident Tejas Rawal has just the ticket.

The joke is certainly not on 16-year-old Tejas, as he has recently enjoyed a deserved taste of success; his stand-up routine came second in the Jack Petchey Speak Out Challenge.

Funded by the Jack Petchey Foundation, the "Speak Out" challenge is run by Speakers Trust and aims to provide training for schools and the voluntary sector, believing that good communication skills and personal confidence are key to active involvement in community life. Tejas was also the youngest after dinner speaker at the Toastmasters International Conference recently held in Windsor.

Tejas' family may not be too thrilled by the hilarious but rather unflattering caricatures of them that he creates, but he skilfully weaves family life into a side-splitting parody, and had his Speak Out audience in stitches.

You can watch Tejas in action on YouTube at www.youtube.com/watch?v=LMQXJcIcovM. To learn more about Speak Out, visit www.speakoutchallenge.com.

THE ARCHER CALENDAR 2012

Please send me THE ARCHER Calendar 2012.

Name*:

Address*:

.....

.....

.....

Postcode*:

Telephone:

Email:

Number of copies* at £5.00 per copy.

*mandatory fields

I enclose a cheque for £..... made payable to 'The Archer'.

All proceeds go to The Ann Owens Centre, East Finchley (Age UK Barnet),

Post this order form to:

The Archer, PO Box 3699, London N2 8JA

Please note: Delivery is free. Allow at least 14 days for delivery.

Teaching and learning in China

By David Winton

At the end of August 2010 my wife Rachel and I set off from East Finchley to China. We are both retired Barnet secondary school teachers who felt we had more to offer and wanted a challenge.

So we went to teach English for a year at one of the many universities in Wuhan, a vast sprawling city of 15 million on the River Yangtse about 400 miles west of Shanghai. Wuhan is a very busy, noisy place, not a tourist city by any means, but it does have a huge lake surrounded by lovely walks and an archaeological museum with some wonderful exhibits.

Winter cold

We had a rent-free apartment at the edge of the university campus overlooking fields

them we were their first foreign teachers) and to gain confidence speaking English. The students were really a delight: respectful, friendly and hardworking, and very eager to learn about western culture.

We made use of our time in China to travel extensively. Besides the obvious places like Beijing, Shanghai and Xi'an, we visited more out of the way places, like 'Tiger Leaping Gorge' in south-west China, and Jiayuguan in the north-west, where there is the last fort on



A long way from N2: yurts near China's border with Kazakhstan.

Photo courtesy Rachel and David Winton

used for crop testing and, in the distance, a small (but unfortunately polluted) lake. Our flat had basic facilities but, being tiled throughout, was bitterly cold in winter.

The campus was very leafy and had most facilities for everyday living: supermarket, bank, post office, restaurant, and even a hairdresser. The newer classrooms had computers and massive air conditioners but older ones simply had ceiling fans. In winter the students would sit wearing coats and gloves, and we wore our coats as well!

Eager students

We had 16 hours of classes a week with first- and second-year undergraduates, providing them with an opportunity to hear a native English speaker face-to-face (for the vast majority of

the Great Wall. But the highpoint of all our trips was visiting the family of one of Rachel's students, a Kazakh girl, in both her home village and her family's yurt (traditional tent) in the mountain grasslands near China's border with Kazakhstan.

We had a really wonderful year, and we will always remember our students and the Chinese friends we made there.

Unwanted cars raise cash

Noah's Ark Children's Hospice is asking the public to crunch their old cars for cash as part of a novel fund-raising scheme run by the Giveacar social enterprise.

Sarah Austin, Community & Events Fundraiser for Noah's Ark, says: "This is a simple and effective way of attracting a new source of donations as well as reducing the number of unwanted or unused cars lying around. It's a win-win situation."

Unwanted cars are collected free-of-charge by Giveacar and either sold through an online auction, or disposed of in an environmentally friendly way at an authorised treatment facility. Proceeds from the sale are donated to a charity of the donor's choice, with 'bangers' that are scrapped still netting between £40 and £160 for the chosen cause.

For further information about Noah's Ark Children's Hospice and/or about how old, unwanted and unused cars can benefit the charity, contact Lorraine Feldman at support@giveacar.co.uk.

Do you have a story for us?

You can send your stories, letters, and photos by email to the-archer@lineone.net or by post to The Archer, PO Box 3699, London N2 8JA. Tweet us @TheArcherN2 and find us on Facebook. You can also find out more about contributing and advertising at www.the-archer.co.uk

First Class Learning

Helping Children Succeed in Maths and English

Do you want your child to EXCEL?
First Class Learning has the answer!
 Individualised Maths & English Tuition
 Courses based on National Curriculum & Guidelines
Open Day on Saturday 14th January,
11.30am to 2.30pm at Holy Trinity Church

CLASSES Mondays & Tuesdays 4-6pm
 VENUE Holy Trinity Church, Church Lane, East Finchley N2 0TH

Contact Diana on:
 020 8959 1952 or 07711 842 758
 email: eastfinchley@firstclasslearning.co.uk

www.firstclasslearning.co.uk

A friendly welcome awaits you

EAST FINCHLEY METHODIST CHURCH

197 High Road, London N2 8AJ (opp. Creighton Ave.)
 tel: 020 8346 1700 www.eastfinchleymethodist.org.uk

Sunday service at 10.30 a.m.
with Creche and Young Church

Worship Music Social events Wheelchair friendly
 e-mail: info@eastfinchleymethodist.org.uk Room hire tel: 020 8444 9887

PARENT & BABY/CHILD ACTIVITIES

❖ **Coffee & Kids**, Fri 9.15-11.15, Green Man Ctr. Rachel 8343 6147.

❖ **Dads' Club**: Get-togethers for dads looking after young children in East Finchley. Adam 07957 441435.

❖ **EF National Childbirth Trust** contact Ruby Yang or Patrizia Canwell at eastfinchleynct@googlemail.com

❖ **Newstead Parent & Toddler Group**, Thurs 9-12-30, Green Man Ctr. Sajni 8359 3460.

❖ **Parent & Toddler Group**, Green Man Centre, Julia 8444 2276

❖ **Stepping Stones**, interactive play session for under 3s. Karen 07957 278860.



Help stop the spread of Norovirus

Because of continuing raised levels of norovirus (the winter vomiting bug) outbreaks, the NHS across north London is offering advice on preventing infection and dealing with the symptoms if people contract the virus. Norovirus is highly contagious, affects people of all ages and can be transmitted through water, food, air and person-to-person contact. The first sign of norovirus is usually a sudden sick feeling followed by forceful vomiting and watery diarrhoea. Some people may also have a raised temperature, headaches, stomach cramps and aching limbs.

Prevention

Due to the frequent close contact with people that Londoners experience on a daily basis, it is important to follow this advice to help prevent the spread of the disease:

- Wash your hands frequently, or wear gloves if you are going out.
- Don't share towels and flannels. Wash any clothing or bedlinen that could have become contaminated with a norovirus.
- Disinfect any surfaces that an infected person has touched.

Treatment

NHS North Central London Medical Director Nick Losseff said: "If you suspect you have norovirus, stay at home. It's best to let the illness run its course and your body usually fights off the infection within a couple of days.

"If you are generally fit and well you shouldn't need to see your GP, but it is really important to drink plenty of water and, if you feel the need, take

paracetamol for any fever or aches and pains. People caring for ill people must be equally vigilant and keep cleaning their hands."

People suffering from norovirus are advised to:

- Try to eat foods that are easy to digest, such as soup, rice, pasta and bread. Babies should continue with their normal feeds.
- Drink plenty of fluids. This is particularly important for young children and the elderly, who are more prone to dehydration.
- Patients finding it hard to keep down fluids should try to take small sips more frequently to keep hydrated.
- Reduce the risk of passing it on to others by washing your hands regularly and staying at home until you have been clear of symptoms for 48 hours. Try to minimise contact with other people.

For more information on the symptoms and treatment of Norovirus, call NHS Direct on 0845 46 47 or go to www.nhs.uk

45 years of GLH

January marked the 45th anniversary of Greater London Hire, the minicab and despatch company. John Scott began the company in 1967. Originally, he drove his own taxi and after each journey would put coins in a telephone box to phone what was merely a hut on the High Road to ask where his next job was. The company now occupies the whole of GLH House and the yard opposite East Finchley Tube station.

GLH has many links with the local community. It was a keen supporter of the "Warning on Waitrose" campaign and was involved in planting



45 years in business: GLH managing director Robert Scott, operations director Zoe Powers, passenger manager Dan Payne and driver Ahmed Khan. Photo by John Dearing

trees at Martin Primary School. The firm also sponsors the East Finchley Festival and is sponsoring the Green Man Community Centre for the Queen's Jubilee.

John Scott passed away last year. This left a huge hole, but his son Robert is now at the helm and is hoping to continue the family business for another 45 years.

Deputy PM at fast food HQ

Deputy Prime Minister Nick Clegg visited the McDonald's UK headquarters next to the tube station in the High Road on 24 January.

He was there to meet staff trainees and apprentices as the fast food chain announced the creation of 2,500 jobs nationwide this year.



GLH House pictured in 2005. Photo by Rick Scorza

KALASHNIKOV KULTUR

By Ricky Savage, the voice of social irresponsibility

Love is....

They say that February is the cruellest month, if only because you have crawled out from your New Year hangover, got your credit card bill and started to panic about how you are going to pay for Christmas. Chuck in a lorry load of frozen pay, crashing eurozones, snow, ice and Pro-Celebrity-Not-Quite-A-Masterchef and depression beckons. So what you need at a time like this is a reason to be cheerful. What you get is St Valentine's Day, which isn't the same thing.

St Valentine's Day used to be the day for love, restaurants, cards and florists. Now, in the hi-tech digital age, it is the day for virtual flowers, virtual cards and the Marks and Sparks eat in for a tenner promotion with added roses. This means you don't need to put up with the usual rubbishy pink balloons, pink streamers and some tatty DJ playing 'romantic muzak'.

Cards always used to be the big thing. For over 160 years we have been going out and spending insane amounts of money on flimsy pieces of card with obscene variations on messages of sugar-plum-loves-honey-bunny inside. These days, we don't bother with cards, we send Facebook messages, changing our status from single to desperate and hoping someone out there cares.

Now we come to the flowers. Everyone knows that the happiest people in London on St Valentine's Day are florists. This isn't the day for celebrating undying love, it's the day for helping florists survive the next few non-flower buying months. It's pointless to refuse; if you try to avoid the heart-shaped roses you will be cast into the outer reaches of hell where you will be continuously whipped with thorns for eternity. Claiming that it's unethical to slaughter flowers won't get you anywhere, not when the red rose brigade are after you.

If you are single the only solution is to stay in and watch DVDs because it's a fair bet that the TV channels will be cluttered with re-runs of *Bridget Jones*, *the Edge of Insanity*, trailers for some new romcom starring Hugh Grant, and whichever Hollywood star fancied a holiday in Europe. And that's before you realise that there's a special Valentine's Day episode of *Downton Abbey* that proves love has absolutely nothing to do with it.

The Sale

(must end 11th February 2012)

**UP TO
80% OFF
FRAMES**

**Only condition is that
you pay the usual low
prices for lenses.**

**TOP FRAMES
LATE CLINIC
ALL TYPES OF
CONTACT LENSES FITTED
DYSLEXIA CLINIC**



**126 HIGH ROAD, EAST FINCHLEY, N2 9ED
(020) 8883-2020**

STEWART-DUNCAN OPTICIANS

<http://www.stewartduncan.com>



Regular Events SPORT & FITNESS

- ❖ **Badminton** Weds eves 8-10pm all abilities, contact George 8349 0170 or John 8444 7163.
- ❖ **Finchley & Hornsey Ramblers Group** Call Vivien 8883 8190
- ❖ **Glebelands Indoor Bowls Club**, Summers Lane N12. New and experienced bowlers welcome.
- ❖ **Keep fit for the Retired** on Wednesdays, Christ Church N12. Call Bridie 8883 5269
- ❖ **Muswell Hill Bowling Club**, Kings Ave, N10. New & experienced bowlers welcome. Tel: 8883 0433.
- ❖ **Pilates** in East Finchley, qualified teacher. Contact Dee on 8883 7029
- ❖ **Pilates class** Weds 3.30 & 7pm at Ann Owens Ctr, N2. Call Penny 8444 2882.
- ❖ **Tae Kwon Do** for children & adults at Finchley Lido Mon & Fri 7-9pm 07949 612 706. www.taekwondo-uktd.co.uk
- ❖ **Tai Chi class** at EF Methodist Ch, Weds at 1pm. Call James Drewe 8883 3308 or james@taiji.co.uk
- ❖ **Tennis club** with four clay courts off Southern Road. Call 8883 7723.
- ❖ **Yoga, breathing & relaxation**. Weekly drop-in classes - N3, N6, N10. Phone Judy on 07956 375607.
- ❖ **Yoga**, pregnancy yoga, meditation classes. Call Sunnah 07941 321 772 or see www.stretchingpeople.co.uk.

MUSIC, DANCE & CREATIVE ARTS

- ❖ **Art Classes**. For info call Henry on 8888 5133.
- ❖ **Ballroom Dance Classes**, Wednesday eves for beginners & improvers. St Mary's Church Hall, N3. 8444 0280.
- ❖ **Ballroom & Latin American Dance Classes** - beginners & improvers. Wed & Fri eve, Bishop Douglass Sch. 8207 2323.
- ❖ **Creative writing classes** in informal, friendly atmosphere. Tel Sallie Rose 020 8444 7217.
- ❖ **East Finchley Writers Group**, Weds at the Old White Lion. Contact Carola 8883 5808 or Lilian 8444 1793.
- ❖ **East Finchley Poetry Writing Workshops**. Monthly on Saturdays. Contact Dennis Evans 8346 9528.
- ❖ **Finchley Jazz Club: Live jazz** on Mon 13 & 27 Feb at 7.45pm, Hall School Sports Ground, East End Rd, N3.
- ❖ **Memory Lane Singing Club** - friendly singing club meets every Friday in Finchley. Call Valerie 8458 4508.
- ❖ **Over 50s Tea Dance** at Christ Church, North Finchley. Every Weds, 1pm. 020 8444 0280.
- ❖ **Learn to sing** at Finchley Methodist Church, Ballards La. Call 8888 4412.
- ❖ **Symphonic Wind Orchestra** Contact Caroline Egan 8340 2706
- ❖ **Traditional music** at TOC, Highgate Hill on 1st & 3rd Tue each month from 8.30pm. Free. All musicians welcome. Info 07958 282898.

CLUBS & SOCIAL

(See p8 for Parent & Toddler Clubs)

- ❖ **Bingo evening, 8pm Sundays**, at the Constitutional Club, The Walks, N2.
- ❖ **Bingo Club** Mondays 7-9pm, Green Man Centre, Contact: Jan 8815 5452
- ❖ **Contact Lunch Club** Tuesdays at the Green Man. Call 8444 1162 to book.
- ❖ **Finchley & District Philatelic Society**, Contact Brian 8444 3251
- ❖ **French conversation** in small friendly group with native speaker. 8444 9395.
- ❖ **Friends of Cherry Tree Wood** www.cherrytreewood.co.uk or 8883 7544.
- ❖ **Haringey Recorded Music Society** informal meetings locally. Call David Moldon on 8361 1696.
- ❖ **LGBT?** 1st Weds every month in a local pub. Welcoming atmosphere. Email efinchleylgbt@hotmail.com
- ❖ **Muslim Lunch Club** 1st & 3rd Weds, Green Man. Call 8444 1162 to book.
- ❖ **North London Bridge Club**, Muswell Hill. Contact 8348 3495
- ❖ **Northside Bridge Club**, EF Methodist Church, Thurs 7.30-11pm. 8346 8145.
- ❖ **Jewish Friendship Club** for over 60s, Tues 1-3 pm at Muswell Hill Synagogue, Tetherdown. Call Anita 8886 6140.
- ❖ **Muswell Hill Tetherdown Bridge**, contact 8883 4390
- ❖ **Probus Lunch Club** for retired professionals. Call John 8883 8114.

Phoenix Cinema under new management

By Sheila Armstrong

The Phoenix Cinema has a new general manager, Cassie Birtwhistle. But Cassie is not new to the cinema; she started there in 2008 as a marketing assistant. With a background as a fashion buyer for a large retailer in New York, she came here to join her husband and decided to do an MA in film studies. The rest, as they say, is history.

While the then chief executive Paul Homer was involved in fundraising and the refurbishment of the Phoenix, Cassie became more and more involved with the day-to-day running of the cinema, finally taking over as general manager when Paul left at the end of last year.

She told *THE ARCHER* that Paul was responsible for bringing the cinema from a financially precarious position when he started to its present status as a successful independent cinema. The showing of the

film *Volver* was a crucial financial turning point, with opera from the New York Met and live plays from the National Theatre continuing the trend.

The focus for the next few years is the cinema's comprehensive education strategy: the contribution the cinema can make in the local community. Cassie specified working with schools and running film making workshops as examples. Watch this space. Cassie will also continue Paul's monthly column in *THE ARCHER*



Fashion fuses with fundraising

When staff at charity Save the Children approached East Finchley-based fashion retail entrepreneur Wendy Hallett in early 2010 asking for a donation in the wake of the Haiti earthquake, little did they know that a charity retail first was about to unfold.

Wendy, founder and managing director of Hallett Retail: The Concessions People, decided that she wanted to do more than just give a one-off donation; she wanted to help Save the Children in a way that would give the charity long term financial assistance.

So she decided to use her award-winning in-store umbrella concessions concept, Fuse, to develop *Fuse Loves Save the Children* concessions to stand alongside her Fuse concessions in department stores.

Wendy and her team persuaded the brands and companies they deal with day-to-day to donate clothes, hangers,

shop-fittings and branding free of charge to ensure that all proceeds went to Save the Children. They were met with an overwhelmingly positive response.

To date, the first concessions in Beales stores in Worthing, Bedford and Hexham have raised over £60,000 for Save the Children.

Hallett Retail's Fuse concessions stock boutique brands mainly targeted at young women aged 16-35.

World Book Day 2012

This year, World Book Day is on Thursday 1 March. To find out what's going on and how you can join in, ask at East Finchley Library or visit www.worldbookday.com.

Youth Music Centre goes to town

North London Saturday Music School (YMC) celebrates its 45th anniversary with a concert in St Martin in the Fields, Trafalgar Square on 13 February at 1pm. Under the baton of their artistic director Nigel Goldberg, the Senior and Chamber orchestra will perform works by Vivaldi, Bach, Mozart and Tchaikovsky.

Students of this vibrant centre regularly win prizes at the annual North London London Festival. The main aim of YMC, though, is music making. Children

as young as 18 months start with playful introductions to the world of rhythm and pitch.

Every Saturday morning a buzzing atmosphere is created by several orchestras, a choir and many different small chamber groups as well as excited young beginner instrumentalists learning string or wind instruments. Find out more at www.youthmusiccentre.org

E-mail your listings to: the-archer@lineone.net

What's On...

Friday 10 February

Opportunities Fair at the Green Man Centre, Strawberry Vale, N2. Come and meet local organisations and support agencies for advice, jobs, health, family, money and sports opportunities; 1-5pm. Free entry, free prize draw, plus refreshments.

Sunday 12 February

• **Valentine's walk** around Hampstead with Pavement Pounders; the third year of this popular walk in the footsteps of the Romantics, with love poems by Keats, DH Lawrence, Tagore and others read at venues associated with them. Meet outside Hampstead tube station, NW3, at 2pm. Walk lasts two hours. Cost £10, advance booking recommended. Telephone 01303 227150 or email pavementpounders@gmail.com

• **Free music concert** at East Finchley Methodist Church, High Road, N2, 7.30pm; Rose Stachniewska (soprano), Junko Ishigaki and Sanae Honda (violins), Bryan Fairfax (viola), Maryan Balkwill (cello) and Caroline Soresby (piano). Programme includes

Brahms A Minor Trio for Viola, Cello and Piano, and Mozart's Sonata for Violin and Piano. Premiere performance of song cycle *The Right Time*, words by Dennis Evans, music by Caroline Soresby. Free admission, collection in aid of EAVES, providing high-quality housing and support to vulnerable women. Venue fully accessible to people with disabilities.

Wednesday 15 February

Dickens and Victorian Barnet: guided walk with City of London guide Paul Barker. Explore the Dickens connection with the borough. Meet at High Barnet tube at 11am. Contact Paul on 020 8440 6805.

Wednesday 15 February to Saturday 18 February

Mathew Dickinson Productions presents **Mother Goose**, Manor Drive Methodist Church, Manor Drive, Whetstone, N20 0DZ; Wed-Fri at 7.30pm, Sat at 3pm & 7pm; Adults £8-£10, Children/Concessions £6.50-£7.50; box office 020 8368 3927.

Sunday 19 February

Fabulous Finchley: guided walk with City of London guide Paul

Barker. Meet at Finchley Central tube (Ballards Lane exit) 2.30pm. Walk finishes at East Finchley tube. Contact Paul on 020 8440 6805.

Thursday 23 February

• The Finchley Society hosts **Tales of Tunnels and Tubes**, a talk on the London Underground by Brenda Cole; 2.30pm, Avenue House, East End Road, N3. Everyone welcome, £2 entrance charge for non-members.

• Are You Sitting Comfortably?

White Rabbit invites you in for a night of captivating story telling. Original short stories brought to life by Bernadette Russell, Gareth Brierley and special guest readers, in a magical atmosphere accompanied by beautiful visuals and sweetly old fashioned live music. Tales inspired by Charles Dickens, in celebration of his bicentenary, and the dark, dank mystery of 19th century London. Competitions, prizes and Victorian parlour games. Jacksons Lane Arts Centre, Archway Road, Highgate, 8pm. Tickets £12.95/£10.95. Box office 020 8341 4421; www.jacksonslane.org.uk

What's on at artsdepot, North Finchley

Saturday 4 February, **Simon Munnery** (comedy); Sunday 5 February, **Tommaso Starace** (free, music); Sunday 5 to Tuesday 7 February, **Little Princess** Live on Stage (family); Friday 10 February, **A 60s Night to Remember** (music); Saturday 11 February, **Clive** (music); Sunday 12 February, **The Elves & The Shoemaker** (family); Sunday 12 February, **Tradicional Cubano Trio** (free music); Thursday 16 and Friday 17 February, **The Secret Garden** (theatre); Thursday 16 to Sunday 19 February, **The Snail and the Whale** (family); Saturday 18 February, **Your Days Are Numbered** (comedy); Thursday 23 February, **The Klezmer Festival Band** (music); Saturday 25 and Sunday 26 February, **Sleeping Beauty** (dance); Sunday 26 February, **Liang and the Magic Paintbrush** (family); Sunday 26 February, **Pocket Caravan** (free music); Thursday 1 March, **Ockham's Razor: Triple Bill** (circus); Friday 2 and Saturday 3 March, **I Have a Dream** (dance); Saturday 3 March, **Robin Ince: Happiness Through Science** (comedy). Box office 020 8369 5454; www.artsdepot.co.uk



Letters to the Editor

Beware the**Church Lane rat run**

Dear Editor,

Parents concerned about the traffic in Church Lane, N2, should consider the fact that the new fast traffic in Church Lane is on a rat run, drivers having found a way from Ossulton Way to the High Road.

Amongst other things, this rat run is why the traffic has been trying to get south, in the opposite direction, against the one-way signs. The new traffic is a direct consequence of the otherwise desirable stopping-up of access from the North Circular Road to East End Road at Manor Cottage.

I myself was nearly knocked off my feet by a number of vehicles sweeping, apparently on autopilot, into Church Lane from East End Road in the middle of the morning one day last week.

I think we must accept the rat-run in Ossulton Way, but the situation in Church Lane seems to need a new traffic management scheme to succeed the one-way system, which was introduced many years ago but is surely no longer viable in present-day conditions.

Yours faithfully,

Robert Morris,

Heath View Close, N2.

Craftsmanship to be**proud of**

Dear Editor,

In reply to Ewan Roberts who considers Robertsons Memorials "degrading to our High Street" (*THE ARCHER*, Letters, December 2011), I personally welcome them on many levels, and none of them six foot under. Firstly, carved headstones are a craft, studied, practised and deeply appreciated by those who choose them. I often take my children for a walk around cemeteries in respectful awe of the work involved

and the messages conveyed. To have craftspeople like this on our High Street is a welcome addition. Secondly, what is wrong with a funeral home one side and memorials on the other? Unless Mr Roberts intends to live forever, at least one of their services will be required in the not-too-distant future. They are a part of the community as much as are our doctors, dentists, grocers and the like and shouldn't be hidden or somehow taboo. So I welcome them, a little further from the cemetery perhaps, a little closer to home.

Yours faithfully,

Gareth Brown,

Address supplied

The bus that didn't stop

Dear Editor,

On Friday 4 November 2011, my friend and I were waiting at the bus stop outside Costa in High Road, East Finchley, for the 143 bus, along with another gentleman. It was 2.20pm, which gave me half an hour to get to my appointment in Highgate Village, easy-peasy you might think. Well, you would be wrong.

At approx 2.30pm, a 102 pulled up at the bus stop with a 263 close behind. Then the 143 turned into the High Road, slowed down but did not bother to stop, despite all three of us jumping up and down on the spot and waving like mad. Whatever happened to the policy of buses queueing behind one another? As one bus collects its passengers and pulls away, it used to be that the bus behind would then pull up to the bus stop allowing passengers on. Not now; it seems to be the policy that it is up to the passenger to risk life and limb, to run into the road to flag the required bus down. Where's the Health & Safety in that?

The 143 is not the only bus to do this. I have had the same problem with the 134 at Archway and my friend

with the 263 at North Finchley. I think it is time Boris Johnson got his finger out and reviewed safety policies on ALL London buses!

Yours faithfully,

Sandra Turner,

By email.

Library SOS

Dear Editor,

The Friends of Hampstead Garden Suburb are trying to save our local library. Barnet Council wants a low-cost solution and by cutting overheads and remarketing as a fresh clean space we hope to succeed.

The library needs to be relaunched and made into an attractive, bright and interesting community space. We intend to have a better choice of books, more activities for children and younger families and a welcoming atmosphere (and seats) for older patrons.

New volunteers are always needed but especially a librarian or customer service person to front the 20 hours or so that we will be open. We are looking to recruit an excellent part-time person to become a familiar face for customers and a mentor to younger volunteers. We have nothing to do with the HGS Residents Association. We represent younger families and children locally. All support is appreciated and I can be contacted on 020 8458 5313.

Yours faithfully,

Brian Ingram,

Brookland Rise, NW11.

Odeon sing-along

Dear Editor,

I am always interested in reading copies of *THE ARCHER*, even though I don't receive them straightaway, as they are handed around to ex East Finchley-ites here Down Under! I was interested to see that the Odeon Cinema in Muswell Hill celebrated its 75th birthday.

When I was about 11 or 12 (in the early 1950s) I used to catch the bus along Fortis Green, to go to the Saturday morning pictures. There was always a long queue of youngsters waiting to go in, and after paying our 6d entrance fee, we sat through cartoons and short films. There was always a serial that ended in a dramatic fashion, so you had to go the next week to see what happened.

We also had a song to sing before the show started. It went like this: "We come along on Saturday morning, Greeting everybody with a smile, We come along on Saturday morning, Making life worthwhile (can't remember this line, probably someone will know) We're members of the Odeon Club, We all intend to be Good citizens when we grow up, And Champions of the free, We come along on Saturday morning, Greeting everybody with a smile, smile, SMILE, Greeting everybody with a smile!" Maybethiswillevoke memories of Saturday morning pictures at the Odeon!

Yours faithfully,

Hazel Astley, nee Spooner,
Leopold Road, N2, until 1958
Now Melbourne, Australia.

In October, we published an account of Muswell Hill Odeon's 75th anniversary and some memories of the Odeon from Denise Kennedy, whose father was the cinema manager from 1945 until 1952. Afterwards he ran the Palace Café, where his cook was the mother of The Kinks.

Happy memories of Grandma Davies

Dear Editor,

I have been sent a copy of *THE ARCHER* by Lisbet Davies, my aunt by marriage. She had highlighted the article concerning the Odeon Cinema, but what interested me the most were Denise Kennedy's memories of Mrs Davies, who worked for her father at the Palace Café as his cook. I married Mrs Davies's grandson, Bobby, who well remembers his Grandma working there.

Thank you, Denise, for your lovely comments about Grandma. She was truly a special lady, a wonderful Mum and Grandma to her eight children and we've lost count of how many grandchildren and great grandchildren. She was a fantastic cook, and I have many happy memories of arriving at Denmark Terrace to open the door to the smell of a huge tray of bread pudding on the table and a steaming jug of hot custard. Her first words when I arrived were "What can I get you to eat, gal?" The kettle was always on and a welcome assured.

Grandma Davies was truly a remarkable lady, who always wanted to be the centre of her family. She passed away 24 years ago in November, and for me Fortis Green seems so empty knowing Grandma now longer lives there. So it was lovely to hear someone say such lovely things about her and to realise people other than her family still remember her. All the family were delighted.

As it happened, that very weekend the family had a get together. I was talking to Dolly (formerly Davies) who used to babysit Denise and worked at the Odeon

Send your correspondence to: "Letters Page",
**The Archer, PO Box 3699,
London N2 8JA**
or e-mail

the-archer@lineone.net.

Letters without verifiable contact addresses will not be reviewed or printed. Contact details can be withheld, however, on request at publication.

for Mr Kennedy. Joyce (Davies) also worked there and met her husband Ken who worked in the projection room, and I believe Dolly's husband Joe also worked there for a short time after the war. Gwen (Davies) also remembers the Kennedys, as they lived near them when they lived at Woodside Cottages. So did two of Gwen's daughters, Karen and Linda. The family is scattered about the country now. Dolly's husband Joe sadly passed away at the beginning of the year. It is lovely when we all get together. The happy times at Denmark Terrace come flooding back.

Yours faithfully,

Angela Whitbread,

By email.

The Odeon, my wife and Mrs Davies

Dear Editor,

Around 1944, I was 15 years old and working as a projectionist at the Odeon Cinema and the Ritz Cinema, which was situated at the top of Muswell Hill. During the war years, film was in short supply so it was common practice to share the newsreel between the Odeon and The Ritz.

During one of my visits with the newsreel to The Ritz I was halfway up to the projection room when an almighty explosion occurred. I discovered that the entire screen and stage area had received a direct hit by a V2 rocket bomb.

Mr Kennedy was the manager of the Odeon cinema and was indeed a character of charm, and he and his wife had showbusiness written all over them. I do not wish this to sound derogatory as this is furthest from my mind, but they were indeed a memorable couple.

Like the manager, his staff of usherettes were impeccably turned out with uniforms made by sisters of The Kinks, before they became famous.

Honestly, the girls in those days were like film stars themselves. One in particular, Joyce, was my favourite and she became my wife in 1949, after I dated her for a few years before doing my national service in the Royal Navy. I first saw Joyce as an usherette and I noticed her beauty decked out in her uniform, in the entrance to the circle seating, which is another story.

Joyce belonged to a large family of girls and two boys who became The Kinks. The mother of this family was a fabulous lady, very hard working and an excellent cook who used to run a café in Muswell Hill owned by the Kennedys. A very firm relationship was formed by all concerned in both families.

In later years I tried various jobs before becoming a police officer, serving in Muswell Hill Police Station, and later a seasoned traffic officer stationed at Hendon Traffic Unit Met police. That's all, folks. Happy memories.

Yours faithfully,

Ken Palmer,

By email.

1000s OF PRICES LOWERED
HELPING YOU PAY LESS EVERYDAY
Take a fresh look at your local Budgens

ALL NEW LOWER PRICES

Budgens
East Finchley

Come in-store now for great value



Shoes, Trainers, Sandals, Bags and Luggage

Complete Repair Service by a craftsman
Same day if required

Key Cutting

1 Manor Park Rd. N2, behind 88 Church Lane, opposite Trinity Church
Tel: 07956 329 150 Open 12-7pm

THE ARCHER

Published by East Finchley Newspapers, P.O. Box 3699, London N2 8JA. www.the-archer.co.uk



Green and pleasant land

This unfamiliar view of East Finchley shows there's plenty of room for greenery in our densely-packed portion of north London. *ARCHER* finance and advertising manager John Dearing took the photograph from Highgate Golf Club back in the early autumn, facing roughly north east.

In the foreground to the right are the trees of Cherry Tree Wood with others on the left clustered around the golf club grounds and The Bishops Avenue and High Road.

The red brick building on the left is the McDonalds headquarters. Above it and just to the right, the beige brick building with lots of (foreshortened) white windows is Viceroy Close. Further in the background just to the left is the spire of the Islington (St Pancras) Cemetery chapel (we *think*, contact us if you know differently).

In the middle and right, the line of buildings running more or less north to south are the flats above shops in the High Road, including Securebase and the Poseidon Fish Bar. The white frontages include Jeremy Leaf and Domino's. Further to the right are homes in the Cherry Tree area and the 'county' roads. What a view!



By Adam Justice-Mills

So, depth of winter, hunkered down against the cold, possibly the gloomiest time of year in the UK. It all makes me want to turn up the heating and eat too much. Maybe that's why I've got disenchanted with sustainability recently.

Of course, it could be the continued ineffectiveness of governments (local, national, international) to keep the sustainability ball rolling...up in the air, whatever. I mean: reducing local recycling, cutting the renewable energy tariff, forgetting to agree CO2 levels ... who's in charge here? Anyway, my enthusiasm was renewed (oops) by friends who have bought an eco-house in Dorset, built with all the right technology and lovely views to boot, for their retirement. I'd like to be able to retire with a zero carbon footprint, at least when it comes to my home and travel arrangements.

The house was a one-off, created by an engineer for himself. Maybe watching Grand Designs has affected me, but I'd like to build an eco-house one day. Somewhere with good views, local shops (and good medical facilities).

There are a few building companies aiming at the 'Passivhaus' energy saving standard: 90% energy reduction compared to 'standard' new houses. Perhaps I'll have a chat with some of them.

So, back to here and now: I'm starting to prepare for the EFO Summer Open and wondering if I can use 'found' materials in my work. I like the idea that the work could have renewable credentials. I've seen lovely work with driftwood; amazing African craft using plastic bags, drink cans, old nails; handbags made of old vinyl records; vintage clothes re-purposed. If anyone working likewise wants to show their work with me, let me know. Meanwhile, on with another jumper, back on the bike and roll on summer!

What a load of rubbish!

By Diana Cormack

The stormy weather which prevailed during the first week of the year happened at a time when the recycling bin collection was due. As well as being pretty full after Christmas, many of the blue plastic recycle containers provided for cardboard, plastic bottles and tins have long since lost the net covering necessary to prevent the contents from escaping.

Nor does it take much for the lids of the black boxes, which contain mostly newspapers and magazines, to be blown off. Taking all this into account along with the strength of the wind, the potential for much of the recyclable material to end up on the streets was enormous. And it did!

One local sadly surveying the scene in her side-road commented: "I don't think the bin-men dropped all of this and I don't think they should have to pick up what was already here. Surely there must be some sort of bin that would prevent this happening?"

On the continent some streets have one large wheelie bin for everyone to use and this idea has been considered by some of our local authorities. There are places in Britain where each house has a separate wheelie bin for recyclable products and where a greater variety of products to recycle are collected than in Barnet. Cost will probably mean that no change is possible, but are our recycle bins really fit for purpose? Let *THE ARCHER* know what you think. Our contact details are on page 2.

Areas
N2
N4
N8
N10
NW3

FITperfect
MOBILE PERSONAL FITNESS TRAINING

Visit the website or call now on
07801 225 660
www.fitperfect.co.uk

Affordable, local, personal training.

New Year. New You. Get fit and toned in 2012 with Fit Perfect!



SECUREBASE
DOMESTIC COMMERCIAL INDUSTRIAL SECURITY
Est 1988

CCTV
Access Control
Intercom Systems
Intruder Alarms
Locks Doors
Safes Grilles
+ EMERGENCY LOCKSMITHS

WHY NOT HAVE A FREE ALARM SURVEY
Your Security Problems Solved!

NSI
NACOSS GOLD

UKAS
PRODUCT CERTIFICATION
0142

UKAS
QUALITY MANAGEMENT
0142

020 8442 0660
112 High Rd • East Finchley • London N2
www.securebase.co.uk