



David Waller with his prize-winning drawing 'Spirit of the Night'.

An artist for all seasons

By Daphne Chamberlain
David Waller, a tutor at The Institute since 2003, has won the Milly Apthorp Prize for an outstanding contribution to the arts in Barnet. The award is for a pencil drawing called *Spirit of the Night*.

Last year, visitors to the arts depot voted him the People's Prize for his *Car Atlas - Rainbow*, created from 2,996 toy cars. And for the last four years he has exhibited wood-carvings and photo-collages at the East Finchley Arts Festival, where a large percentage of the sales goes to the North London Hospice.

David, who is a member of East Finchley Open, also works with clay. He told *THE ARCHER* that these different genres overlap. Indeed you can detect the same hand and mind in all his work.

He talks about his love of shapes and forms in the natural world, the endlessly inspiring human form, and the designs that float in his subconscious. A sculpted flame reminded me very subtly of an animal, and models of humans convey emotions and energy in every line.

Homage to Michelangelo

I found it interesting that several of his human sculptures have their faces in profile or turned away. (David says this is not deliberate.) So it is intriguing that his *Spirit of the Night* drawing concentrates on the face.

He calls it his homage to Michelangelo, another sculptor/painter. It reproduces in pencil the marble face of Michelangelo's statue of *Night*, which accompany *Day*, *Dawn* and *Dusk* in the Basilica of San Lorenzo in Florence. His original plan was to make drawings of all four, because he likes the changing feel of times in each 24-hour cycle.

Spirit of the Night was exhibited along with some very impressive work from students in the recent Institute Art exhibition. For a closer look at it, and his other work, visit www.davidtwaller.com.

Dig in

Barnet archaeologists celebrated 50 years of digging up the past with a party in early August.

The event marked half a century since the founding of HADAS (Hendon and District Archaeological Society). More than 60 members enjoyed examining an exhibition of finds from the Society's history, including a funeral cremation urn dated to between 50 and 160AD discovered in Sunny Gardens Road, Hendon.

East Finchley Arts Festival 2011

Two stars of radio soap opera *The Archers*, four young prizewinning musicians and a host of new works by local composers and writers are just some of the jewels in the crown of the East Finchley Arts Festival next month.

Sunny Ormonde, who plays Lillian in *The Archers*, and Sara Coward, who plays Caroline, will be presenting their show *Wicked Women*, a celebration of outrageous women both historical and fictional.

Young North London Music Festival winners will be giving two recitals and there will be poetry from Fleur Adcock and

James Stannard.

A new work by local composer James Drew-Edwards will be included in the Ripieno Singers programme *Monteverdi to Ivor Novello* and an evening of organ music will include a new piece by festival director Geoffrey Hanson.

Geoffrey told us: "A concert by the Finchley Children's

Music Group, an evening with the East Finchley Writers and an art exhibition in aid of the North London Hospice make up an exciting mix for the festival this year."

The festival runs from 7-16 October and all events take place at All Saint's Church, Durham Road, N2. The full programme is as follows:

Friday 7 October

6.30-8.30pm, **Art Exhibition Private View.** The exhibition of works by London and international artists will be open on evenings when concerts and events are held, and from 12 noon at weekends during the festival, in aid of the North London Hospice.

Saturday 8 October

12.30pm, **Young Artists' Recital**, given by winners of the North London Music Festival. Tickets (unreserved) £5, snack lunch available.

7.30pm, **Choral Highlights:** Monteverdi to Ivor Novello, and beyond via Byrd, Rossini, Rheinberger, Franck, Faure, Seiber; the London Ripieno Singers with Sandra Smith, piano and organ, conducted by Geoffrey Hanson. Tickets: nave (reserved) £15, concs £12, sides (unreserved), £10, concs £8.

Sunday 9 October

7.30pm, **Vivaldi's Women.** A recreation of Vivaldi's music as he would have heard it in Venice at the Ospedale della Pieta, an orphanage for girls. The programme will include the

ever-popular Gloria. Tickets: nave (reserved) £15, concs £12, sides (unreserved) £10, concs £8.

Monday 10 October

7.30pm, **East Finchley Writers.** This group of local writers presents a selection across many styles and genres to move, amuse and surprise. Admission is free with a bucket collection for the North London Hospice.

Tuesday 11 October

7.30pm, **Florilegium: Father, Son & Godfather**, a programme of music by JS Bach, CPE Bach and GP Telemann. Tickets: nave (reserved) £15, concs £12; sides (unreserved) £10, concs £8.

Wednesday 12 October

7.30pm, **Lute Song Recital:** James Bowman, counter tenor, and Dorothy Linell, lute. Tickets: nave (reserved) £15, concs £12; sides (unreserved) £10, concs £8. The concert is followed by supper provided by Amici Delicatessen. Supper tickets £6, pre-booked by Tuesday 11 October.

Thursday 13 October

7.30pm, **Wicked Women**, with Sunny Ormonde and Sara Coward, Lillian and Caroline of Radio 4's *The Archers*. This is a celebration of outrageous women, real and fictional, throughout the centuries from Cleopatra to Mae West, Lady Macbeth to Lady Bracknell, and contains revealing insights into Sara and Sunny's life with the world's longest-running radio series. Tickets: nave (reserved) £15, concs £12; sides (unreserved) £10, concs £8.

Friday 14 October

6pm, **Early Evening Organ Music.** Festival Director Geoffrey Hanson plays an hour's programme on the All Saints' Hunter/Bishop organ

of music by Bach and Franck and the first performance of his own Sonata for Organ. Free admission.

7.30pm, **Two Poets' Poetry.** Fleur Adcock and Julian Stannard read from their works. Tickets: nave and sides (all unreserved) £10, concs £8.

Saturday 15 October

12.30pm, **Young Artists' Recital**, given by winners of the North London Music Festival. Tickets: (unreserved) £5, snack lunch available.

7.30pm, **Simon Purcell Trio** jazz, with vocalist Anita Wardell. Tickets: nave (reserved) £15, concs £12; sides (unreserved) £10, concs £8.

Sunday 16 October

7.30pm, **Finchley Children's Music Group.** This nationally-famous group had its beginnings in East Finchley. Giving concerts of both choral and solo items, the group has become a festival favourite. Tickets: £10 (unreserved), concs £8; under-18s, £1 (under-18s rate available on the door only).

How to book

A season ticket for £50 entitles the holder to one ticket for each event. Online booking, with a 10% surcharge on each ticket, is available at www.efinchleyarts.ticketsource.co.uk. Box offices are at Les Aldrich music shop, 98 Fortis Green Rd, N10 3HN, tel: 020 8883 5631; and Black Gull Books, 121 High Road, N2 8AG, tel: 020 8444 4717. Tickets may also be purchased on the door according to availability. Credit cards will not be accepted on the night of the event.

A walk in the woods

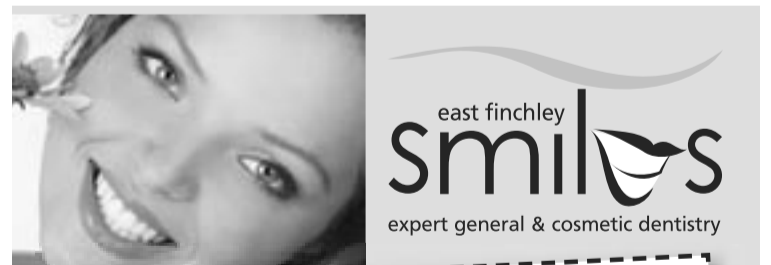
The team at the Bobath Centre for Children with Cerebral Palsy in East End Road are inviting people to join them for a sponsored walk in the woods on Sunday 25 September.

Starting in Cherry Tree Wood, the route will take walkers up through Highgate Wood and Queens Wood, to Shepherd's Cot near Crouch End, before circling back to Cherry Tree Wood again.

A spokesman said: "This promises to be a lovely autumn walk through some of north London's most beautiful and ancient woodlands, and we hope lots of people from the local community will be able to join us."

The walk is three miles long and accessible for families and children; there will be stopping points at the parks and cafes on the route, as well as activities for children.

To take part, people need only make a small donation to the Bobath Centre (£3 each or £10 for a family). Alternatively, you can raise as much sponsorship as you can from friends and family in advance. Contact the fundraising department at the Bobath Centre on 020 8442 2275 to get your free fundraising pack.



NHS CHECK-UPS £16.50
(this includes x-rays where necessary)

NHS EXEMPT PATIENTS AND CHILDREN UNDER 18 ARE FREE

new NHS list now open

member of the
BDA and the BDHF



smile with confidence

020 8444 3436

144 The High Road, East Finchley, London N2 9ED
www.eastfinchleysmiles.co.uk

East Finchley Baptist Church

Just off the High Road in Creighton Avenue N2

Sunday Mornings at 10.30 am

For more information
please contact the Church Office
Tel: 8883 1544 (Minister: Simon Dyke)

Visitors always welcome