

**JEREMY LEAF & CO.**

Professional Sales & Lettings  
AT COMPETITIVE RATES  
020 8444 5222  
eastfinchley@jeremyleaf.co.uk

Local News is our Aim

# THE ARCHER



**GLH**  
www.glh.co.uk

**020 8883 5000**  
**CARS & COURIERS**

April 2011 No. 210  
ISSN 1361-3952 **20p** where sold

*A community newspaper for East Finchley run entirely by volunteers.*

## Round one to residents in parking fight

By John Lawrence

East Finchley residents have won the opening skirmish in their battle with Barnet Council to prevent the introduction of steep price increases in Controlled Parking Zone (CPZ) charges. The council was forced to suspend the increases for at least a month after campaigners spotted mistakes in the consultation process.

At the same time, residents have formed the Barnet CPZ Action Group and raised enough money to launch a High Court legal challenge against the price increases. They want them scrapped altogether.

### 400% price hike

Barnet Council is planning to introduce increases to 250% on standard resident parking permits, from the current £40 per year to £100 per year for the

first car. It plans to raise one-day visitor permits to 400%, from the current £1 to £4 per day.

The new rates were due to apply from 21 March but the council was forced to postpone this date to at least 14 April while it took out fresh press advertisements about the rises. This was after campaigners noticed that the original adverts in February contained the wrong price information.

David Attfield, chairman of the action group, told *THE ARCHER*: "It's reassuring to know the council is incompetent but the fight goes on."

The residents are basing their legal case on the question of whether the council is empowered to increase parking charges for the express aim of raising revenue rather than the original CPZ purpose of controlling parking demand.

All car owners in the CPZ areas will be affected, they say, and the increases will particularly hit those who rely on visitors driving into the area, many of them elderly.

Jeanne Wray, 79, who lives in Baronsmere Road, says: "This is going to stop my social life. My friends are not going to be able to afford to come."

### How you can help

The Barnet CPZ Action Group estimates it needs to raise £15,000 to take the case to the High Court and is calling for donations and fundraising help. Cheques made payable to 'Barnet CPZ Action' can be sent to 88 Summerlee Avenue, East Finchley, London N2 9QH. Find further information on the action group at [www.barnetcpz.blogspot.com](http://www.barnetcpz.blogspot.com) or email [barnetcpz@gmail.com](mailto:barnetcpz@gmail.com)



Kenneth Dunjohn and Irene Thompson Bates. Photo by Kashif Zaidi

## Falling in love again

By Daphne Chamberlain

**This was an unusual wedding. The groom is 82 and the bride 83. They met in the 1940s, parted four years later, and had no further contact for 59 years. Then their paths crossed again through a medical website, and this time joined in marriage.**

"Usual" has never been the norm for Kenneth Dunjohn. As a 17-year-old cub reporter for the *Hendon and Finchley Times*, he found himself interviewing Winston Churchill. The plane carrying the wartime Prime Minister back from Yalta had been diverted to Hendon airfield because of fog, and Kenneth happened to be there.

Later on, he chaired HGS Liberals and then Neighbourhood Watch in East Finchley, where he moved 25 years ago. For 55 years he was married to Grita, whom he cared for when she developed Alzheimer's.

Irene Thompson Bates, meanwhile, was living in the US, married for 30 years to an American Air Force colonel, and in a senior position in National Cash Registers in New York. Kenneth told *THE ARCHER* he actually thought she had died.

### Heart to heart

In fact, it was a health problem that reunited them, when Irene's specialist in Florida advised her to look up a UCH website featuring Kenneth and his recovery from a heart condition. When she visited England, they fell in love all over again.

Kenneth says, "Nobody could have had happier first marriages than we both did. It wasn't a case of starting again where we left off. When we met once more, we were completely different people, but just felt we were on the same wavelength".

The Dunjohns are both customers of Kashif Zaidi at KF Computers & Imaging, who took their wedding pictures.



.....The Right Choice

Estate Agents - Valuers - Residential Sales - Lettings - Management - Cyprus Properties  
40 High Road East Finchley London N2 9PJ Tel: 020 8883 9090 Fax: 020 8883 8580  
Email: [enquiries@primelocations.co.uk](mailto:enquiries@primelocations.co.uk) Website: [www.primelocations.co.uk](http://www.primelocations.co.uk)

Call us for a Free Valuation. Family Business you can Trust.

## VICTORY AUTO SERVICES

### Air-Conditioning - Recharge & Servicing

Mechanical repairs, tyres,  
bodywork, clutches, exhausts  
MOTs by appointment



109 Fortis Green East Finchley London N2 9HR  
Tel: 020 8883 9707 / 0023 Fax: 020 8482 9179

ALL DOMESTIC  
ELECTRICAL  
WORK  
UNDERTAKEN



ESTABLISHED IN  
THE COMMUNITY  
FOR OVER  
18 YEARS

- AUTHORISED STOCKIST OF ROBERTS RADIOS
- FAN HEATERS
- CONVECTOR HEATERS
- HALOGEN HEATERS
- OIL FILLED RADIATORS

Call us FREE on 0800 279 3463

[www.everything-electrical.com](http://www.everything-electrical.com) 38 High Road, London N2 9PJ



82 High Road  
East Finchley  
N2 9PN

020 8883 0033

[highroadn2@prickettandellis.com](mailto:highroadn2@prickettandellis.com)

Estate Agents and Valuers . Established 1767

• Visit your community newspaper on-line at [www.the-archer.co.uk](http://www.the-archer.co.uk) •





## THE ARCHER

**PO Box 3699  
LONDON N2 8JA**  
**WWW.THE-ARCHER.CO.UK**  
**e-mail: THE-ARCHER  
@LINEONE.NET**  
**Voicemail (messages only)**  
**0844 579 6949**  
then enter mailbox  
number **75390**  
for Advertising / Finance  
or mailbox number **63450**  
for Editorial / Enquiries.

**PUBLISHED BY**  
**East Finchley**  
**Newspapers**

**CHAIR**  
**Kevin Finn**

**COPY EDITOR**  
**John Lawrence**

**EDITORIAL TEAM**  
**Diana Cormack**  
**Daphne Chamberlain**

**SUB EDITORS**  
**Ann Bronkhorst**  
**Jeff Robson**  
**Pam Kent**  
**Caroline Knell**

**PRODUCTION EDITOR**  
**Alison Roberts**

**PICTURE EDITOR**  
**Mike Rubens**

**FINANCE &  
ADVERTISING**  
**John Dearing**

**DISTRIBUTION**  
**Toni Morgan**  
**Margi McAlister**  
**Pam Kent**

**PRINTED BY**  
**Sharman & Co Ltd**

*Thank you to The Bald  
Faced Stag for providing  
us with a meeting place.*

*THE ARCHER team wishes  
to thank all the generous  
people who give up their  
spare time, in all weather,  
to deliver the paper for us.*

### Your contributions

If you have a story for us, please  
contact us at the above address.

Comments to THE ARCHER may  
be published unless clearly  
marked 'Not for publication'  
within the text.

### Copy deadlines

**May: 8 April**  
**June: 13 May**  
**July: 10 June**

## USEFUL TELEPHONE NUMBERS

### Councils

**Barnet Council:**  
Admin/Town Hall 020 8359 2000  
Council Tax 020 8359 2608  
Recycling & refuse 020 8359 4600  
Primary Care Trust 020 8201 4700  
Benefits Agency 020 8258 6500  
Employment Service 020 8258 3900  
**Haringey Council** 020 8489 0000

### Leisure

**Alexandra Palace** 020 8365 2121  
**East Finchley Library** 020 8359 3815  
**Muswell Hill Odeon** 0870 505 0007  
**Phoenix Cinema** 020 8444 6789  
**Warner Cinema** 020 8446 9933

### Transport

**Nat. Rail Enquiries** 0845 748 4950  
**City Airport** 020 7646 0088  
**London Transport** 020 7222 1234  
**National Express** 08705 808080  
**Heathrow Airport** 0870 000 0123

### Hospitals

**Barnet General** 0845 111 4000  
**Coppetts Wood** 020 8883 9792  
**Finchley Memorial** 020 8349 7500  
**Oak Lane Clinic** 020 8349 7000  
**Royal Free** 020 7794 0500  
**St Luke's** 020 8219 1800  
**Whittington** 020 7272 3070

### Health Advice

**AIDSline** 020 8363 2141  
**Alcoholics Anonymous** 0845 7697555  
**Barnet MENCAP** 020 8203 6688  
**Cancer Support** 020 8202 2211  
**Carers' Line** 0808 808 7777  
**Drinkline** 0800 917 8282  
**Drugs Helpline** 0800 776600  
**MIND** 020 8343 5700  
**NHS Direct** 0845 4647

### OAPs' Advice

**Barnet Age Concern** 020 8346 3511  
**Contact (N2)** 020 8444 1162

**Help the Aged** 0808 800 6565

### Crime

**Emergency** 999  
**Barnet Police** 020 8200 1212  
**Mus. Hill Police Stn.** 020 8345 2148  
**CrimeStoppers** 0800 555111  
**Victim Support** 0845 303 0900  
**East Finchley Safer Neighbourhood Team** 020 7161 9014

### Help & Advice

**Childline** 0800 1111  
**Disability Info Service** 020 8446 6935  
**E.F. Advice Service** 020 8444 6265  
**Gingerbread** 020 8445 4227  
**National Debt Line** 0808 808 4000  
**NSPCC** 0800 800500  
**Rape & Sexual Abuse** 020 8683 3300  
**Relate** 020 8447 8101  
**RSPCA Inspector** 0300 1234 999  
**Samaritans** 08457 909090  
**Refuge Crisis Line** 0870 599 5443



**The Green Man Community  
Centre, Strawberry Vale,  
London N2 9BA**  
**Tel/Fax: 020 8444 6265**

**We have moved!**  
**Please contact us on on the  
above number for details of  
our services.**

### Community Services

❖ **Credit Union**, Green Man Community Centre 020 8883 4916  
❖ **Careers advice**, Green Man, Community Centre 020 8883 4916  
❖ **Toy library**, Muswell Hill 020 8444 0244/ 8489 8774, [www.muswellhilltoylibrary.com](http://www.muswellhilltoylibrary.com)

## Planning Applications

### Barnet Council

**59 Church Lane, N2**  
Retention of single-storey rear extension to existing restaurant and minor amendments to previously approved roof overhang to incorporate an enclosed area to rear of site at ground floor level.

**152 East End Road, N2**  
Installation of new shop front. Installation of extraction unit to rear elevation.

**First floor flat, 228 East End Road, N2**  
Extension to roof including side and rear dormers, and front roof light to facilitate a loft conversion.

**42 Fortis Green, N2**  
Internal alterations and conversion of existing self contained studio flat into a one-bedroom self contained flat.

**111 High Road, N2 (Cochin Restaurant)**  
Alterations to existing flue to rear.

**119 High Road, N2**  
Aluminium sign tray with individually illuminated letters. One internally illuminated hanging projecting sign.

### Haringey Council

**51 Fortis Green Avenue, N2**  
Erection of single-storey rear ground floor extension.

**24 Ringwood Avenue, N2**  
Erection of single-storey rear extension.

**20 Twyford Avenue, N2**  
Alterations to hipped roof into Dutch gable, erection of rear dormer, erection of single-storey rear extension.

## Fortis Green history walk

**Hornsey Historical Society will lead a local history walk round the streets of Fortis Green, one of the early villages of Hornsey Parish, on Sunday 10 April.**

It starts at 2.30 pm from the lane beside the United Reform Church Hall very near the junction of Queen's Avenue and Tetherdown. The hall is on the left, as you start going down Tetherdown from the traffic lights. The walk should last around 2.5 hours.

Guides will explain the effects of the Enclosure Act on Fortis Green. Walkers will see the firemen's cottages, and a reminder of the fire station; where the school was, and where the folk-rock group Fairport Convention got their name. Did you know Fortis Green has its own back-to-back cottages? The Brewery, unfortunately has gone, but not the post box where Oscar Wilde posted his postcards home, or the Kinks' Davies brothers' boyhood home.

Check the website before the day, in case of illness, or snow! Tickets are £2. Visit [www.hornseyhistorical.org.uk](http://www.hornseyhistorical.org.uk) or ring Joy Nichol on 020 8883 8486 for more details.

## Burglars target a single road

By Janet Maitland

**In the last six months there have been five burglaries and one attempted burglary in Summerlee Avenue. The latest burglary was at 3.30am on 22 February when criminals forced the front door open while the occupants were asleep.**

"Two of the recent burglaries took place from the front, but the rest were forced entries through back doors," said Police Constable Eddie Rose from the Safer Neighbourhood Team (SNT). "The burglars are only in the house a few seconds; they just grab the nearest things of value and then make off in stolen cars. Part of the problem in this street is a series of ungated alleyways running between the houses."

### Police advice

The SNT has stepped up their patrols on the avenue and run a series of street briefings giving crime prevention advice to residents. A property-marking scheme is also planned. Putting up signs that warn would-be burglars that property has been marked can be an effective deterrent.

"Criminals are now using industrial-sized crowbars to prise open doors in seconds," said the constable. "A door chain is no protection as they just ping off when doors are forced. Mortice locks should be locked when you are at home, especially at night. Residents should also use timers so that lights come on when they are out or away on holiday."

For crime prevention advice and help, wherever you live in East Finchley, contact the Safer Neighbourhood Team at 113 East Finchley High Road, N2 8AG. You can phone them on 020 7161 9014 or 07887 632767, email them at [EastFinchley.snt@met.police.uk](mailto:EastFinchley.snt@met.police.uk) or talk to the Police Community Support Officers (PCSOs) you see on patrol.

**ROBIN KIASHEK**  
BSc (Hons) Ost Med

**OSTEOPATHY in Fortis Green**  
including the Perrin Technique for Chronic Fatigue Syndrome/ME, Nutrition, Life Coaching/NLP and Autogenic Training

**52 Twyford Avenue  
Fortis Green  
London N2 9NL**

**020 8815 0979  
07956 213 759**

[www.robinkiashek.co.uk](http://www.robinkiashek.co.uk)

**T'ai Chi & Qigong**  
**Wednesdays: 1.05-2.00pm**  
(Trial session: £5)  
at East Finchley Methodist Church, 197 High Road, N2 8AJ.  
James Drewe is a qualified teacher and has been practising t'ai chi for 34 years.  
He is Vice-Chairman of the Longfai Taijiquan Association  
Other classes (Tottenham Ct. Rd., Westminster, The City): [www.taiji.co.uk](http://www.taiji.co.uk)  
email: [james@taiji.co.uk](mailto:james@taiji.co.uk) phone: 020-888 333 08

**North London  
IT Support**  
IT Support in your business and at home

**COMPUTER ON GO SLOW?**

**0800 756 1400**

[www.N2cr.com](http://www.N2cr.com)

Computer repair specialists: Apple Mac and PC Help  
LOCAL Computer Support. We are based in EAST FINCHLEY





## New vision for Stanley Road Playing Fields

Look out for a website, due to be launched on 2 April, which will feature sketches of the proposals for Stanley Field, as well as news and information about the campaign to keep it as a community sports facility. Visit [www.stanleyroadsports.org](http://www.stanleyroadsports.org).

THE ARCHER understands that the Stanley Road Playing Field Campaign Committee is working on a scheme for the site outlined and approved at a public meeting in February. As reported in our March edition, this would combine indoor and outdoor multi-use facilities.

Roger Chapman, Chair of the Campaign said: "Positive discussions have been held with Sport England, the London Marathon Trust and other sports bodies. Plans are being drawn up by local architects and a business planning consultant employed to draft a bid document to be submitted to Barnet Council before the end of May. A new Charitable Trust is being established which, if the bid is successful, would run the site.

"We are drawing up a sus-

tainable and viable scheme for Stanley Road to keep it for continued sports and recreational use. We will need support from the local community when we put the bid in to Barnet Council and will give more details of how local people can support that bid in the next edition of THE ARCHER and on our website."

Information can also be found on their Facebook page at [www.facebook.com/pages/St Stanley-Road-Playing-Field-East-Finchley/200473973296586](http://www.facebook.com/pages/St Stanley-Road-Playing-Field-East-Finchley/200473973296586). A comment on the Facebook page says: "This is an opportunity to provide East Finchley with a viable Sports Centre, let the 2012 spirit live!"

You can also contact the committee by calling Rob Robertson on 020 8883 4916.

## East Finchley Festival fights on

The East Finchley Community Festival Committee has declared that, come what may, this year's festival in Cherry Tree Wood on Sunday 19 June will remain free and take place between 12 noon and 6pm.

In February, Barnet Council announced a substantial hike in charges for the use of parks for events such as the festival. Negotiations about the level of these newly imposed charges continue between Barnet Council and the festival committee.

Roger Chapman, of the festival committee, said: "There is no way that we are going to let these new charges stop our successful and free community festival. We will redouble our efforts to put on a free festival that attracts all the family.

"The festival has never been grant aided by Barnet Council and is run entirely by local volunteers. On the day at least 50 volunteers are needed to sell raffle tickets, steward the event or help in the bar."

If you can spare an hour during the day and make a contribution to the success of the festival, telephone 07983 360 834 or e-mail [eastfinchleyfesti](mailto:eastfinchleyfesti)

[val@gmail.com](mailto:val@gmail.com). Keep in touch with the discussions with the Council on the festival Facebook page at: [www.facebook.com/pages/East-Finchley-Festival/270157876374](http://www.facebook.com/pages/East-Finchley-Festival/270157876374)

## Barnet appoints new Mayor

The 47<sup>th</sup> Mayor of Barnet will be Councillor Lisa Rutter, who has represented the Brunswick Park ward since 2006 and has lived in the borough for 26 years.

Her husband Mark will be her consort and her Deputy Mayor will be Councillor Barry Evangeli, supported by his mother Dora as his escort. Councillor Rutter will take up her post after the annual meeting of the council on 17 May.

## Dyspraxia

By Daphne Chamberlain

Alastair Hamilton has had trouble getting paid work. Despite being honest and conscientious, he has been told he is too slow. He says he feels put down very easily, as people patronise him and are not patient enough. Alastair suffers from dyspraxia.

Dyspraxia affects the planning of what to do and how to do it. Children with this condition struggle with everyday tasks like tying shoe-laces or doing up buttons. Often untidy and disorganised, they may also find it difficult to process language or to remember what people have told them. They are, though, generally of average or above average intelligence.

### "Clumsy child"

About 6% of us are thought to be dyspraxic (2% severely), and many people may be slightly affected without knowing it.

For example, I've always found remembering demonstrations of actions difficult, and will never forget my school-girl self struggling to fold up a deckchair while neighbours looked on.

That humiliation was just a taste of what people like Alastair have to endure. In severe cases, dyspraxic children need the help of a team of therapists.

### Achievements

Alastair has achieved many things to be proud of, including arranging and singing solo in a concert at St Michael's Church, Highgate, in aid of the Dyspraxia Foundation.

He works as a volunteer with blind people, and has done voluntary work as a cashier in charity shops. To make the grade in a career, he simply needs time and understanding. Currently, he is working



part-time as a housekeeper in a Barnet care home, where the supportive manager is easing him into the job gradually. It is still early days, but Alastair believes he can do the work and likes the people.

Find out more about people like Alastair at [www.dyspraxiafoundation.org.uk](http://www.dyspraxiafoundation.org.uk). The Dyspraxia Foundation is a registered charity financed through

membership subscriptions and private donations. It has local groups, usually run by parents of dyspraxic children, and an adult group called DANDA.

Conferences, Dyspraxia Awareness Week, and initiatives such as the film launched by Trevor McDonald, are gradually making more people aware of the condition and how to live with it.

## KF Computers & Imaging

93 High Road, East Finchley N2 8AG

- FREE PC/Laptop Check-up
- Custom built PCs
- Laptop/Pc Sale, Repair
- Data Recovery
- PC Reinstall & Virus Removal
- Prints, Posters, Canvas
- Digital Cameras, frames
- Wedding Videos, Photos
- Onsite Studio Available
- Photo Gifts (Cup, t-shirt - Prints)

[www.kf-computers.co.uk](http://www.kf-computers.co.uk) OR [www.kf-imaging.co.uk](http://www.kf-imaging.co.uk)

**02088159898**

Problem finding a reliable electrician?



East Finchley Electrical Contractors turn up on time, guarantee our work and are unbeatable value!

- Domestic re-wiring
- Fault finding
- Safety inspections
- Free site surveys
- No job too big or too small!

Call EFEC now: **020 8883 9098** or visit [www.ef-elec.co.uk](http://www.ef-elec.co.uk)

**East Finchley Electrical Contractors**  
115 High Road, East Finchley N2 8AG

## Nicky Sharp Osteopathy Clinic

*Cranial and Structural Osteopathy and Acupuncture*

*All Major Insurers Accepted*

For consultations and appointments:

**Telephone: 020 8815 9433**

260 East End Road [www.nickysharposteopathy.co.uk](http://www.nickysharposteopathy.co.uk)

London N2 8AU e-mail: [info@nickysharposteopathy.co.uk](mailto:info@nickysharposteopathy.co.uk)



**HYPNOTHERAPY  
SPIRITUAL HEALING**

Kathryn Scorza

Registered Hypnotherapist  
Soul Therapist  
and Spiritual Healer

Contact me for more information or to make an appointment

07703 404 839

[kathryn@kathrynskorza.co.uk](mailto:kathryn@kathrynskorza.co.uk)  
[www.kathrynskorza.co.uk](http://www.kathrynskorza.co.uk)

Hypnotherapy offered for a wide range of issues  
excluding only  
weight loss and smoking cessation

## Josephines

EXPERTS IN CREATIVE FLORAL DESIGN

Happy Mothers Day Mum, thanks for all your help  
Love you Loads xx

**Mothering Sunday 3rd April 2011 – don't forget!**

[www.josephinesflowers.co.uk](http://www.josephinesflowers.co.uk)

Tel: 020 8444 9569/020 8883 3598

60 High Rd, East Finchley, London N2 9PN





David Evans (left) presenting his first book to Alan Whitewright.  
Photo by Diana Cormack.

## Two for a million

By Daphne Chamberlain

**At least two East Finchley people took part in World Book Night on 5 March. Sponsored by booksellers and publishers, and backed by authors and librarians, a million books were given away. Each of 20,000 volunteers chose one title from a list of 25 and was sent 48 copies of that title to distribute.**

Paula Dozie heard about it on BBC Breakfast News, and thought it sounded fun. She chose *Half of a Yellow Sun*, by Nigerian author Chimamanda Ngozi Adichie. Trudging around streets on the night, particularly with a toddler to look after and her husband away for the weekend, would not have been ideal. So she got round that by giving copies to friends, family, the Library, Black Gull Bookshop, the Phoenix, and members of East Finchley Natural Childbirth Trust. Where books went can be tracked by a unique ID number issued to every giver.

The launch on 4 March in Trafalgar Square, attended by Boris Johnson, was billed as "the biggest single literary event in history".

Paula told us: "It was really something different. Nelson's Column was lit up, and the first 1,000 volunteers in an online ballot were given places round the stage. Graham Norton, the host, interviewed a couple of volunteers, and authors and celebrities read aloud from books of their choice and (in one case) a Cole Porter song lyric."

Author Margaret Atwood read at the launch and her own book *Blind Assassin* was the one given away by our other East Finchleyan David Evans. He learned about the scheme on the internet, and chose that book because he really loves it and wanted other people to enjoy it too.

*Did any more of you take part? We'd love to know. Our contact details are on page 2.*

## Academic sheds light on sacred texts

This year is the 400th anniversary of the publication in 1611 of the King James Bible, the most widely read translation of the Bible ever made. To mark this event, Professor Bob Owens of the English Department at The Open University, was invited by Oxford University Press to edit the 1611 text of *The Gospels* for the paperback series Oxford World's Classics.



The Gospels of Matthew, Mark, Luke, and John are regarded by Christians the world over as their most precious and sacred writings. They provide the fullest and most memorable accounts of the life and teachings of Jesus Christ, and scenes from them have provided subject matter for innumerable works of art, literature, and music.

Bob, who lives in Church Lane, places the Gospels in the context of the development of early Christianity as it separated itself from Judaism, highlighting how each one offers its own distinctive portrait of Jesus. He also describes how the translators of the King James Bible went about their task, and gives examples of the extraordinary influence of this book on the development of the English language as well as English literature.

His edition provides very full explanatory notes, elucidating aspects of life in first-century Palestine and clarifying obscurities in 17th century language and phraseology. Bob says his aim was to make the Gospels accessible to modern readers, while preserving the splendour, the music and the rhythms of the King James text.

*The Gospels: Authorized King James Version is published by OUP on 10 March 2011. It is available from all good bookshops, at £8.99. ISBN 978-0-19-954117-1.*

## Stolen number plates

**Barnet Boroughwatch has issued a warning to residents about a series of number plate thefts in the borough in recent months.**

"This type of crime is often not reported to the police," said Paul Hammond, the coordinator. "But if your plate is cloned and the bandit vehicle is used by criminals, the police will come knocking at your door. Don't forget to cover your back: report your stolen plate to the police."

## Phoenix becomes a 2012 Olympics icon

By David Tupman

**It is a great coup for THE ARCHER to be the first of the UK print media to reveal that East Finchley's favourite cinema will play a big part in London's cultural Olympics.**

Fresh from its own centenary success, the Phoenix will join the 112-metre-tall sculpture - the ArcelorMittal Orbit - as part of an artistic centrepiece for the Olympic park in Stratford. Costing £19 million, the twisting tower has been designed by Turner Prize winning artist Anish Kapoor incorporating the five Olympic rings and will offer visitors panoramic views of London. The Orbit will stand 22 metres higher than the Statue of Liberty.

In contrast, a 10-metre replica of the Phoenix Cinema will be placed between the Orbit and the Olympic stadium and will shine across the park with brilliant Technicolor-inspired light effects.

The Olympic organisers will undertake the necessary works to take full-sized plastic replica moulds of the cinema's exterior and interior features. Such is the technical wizardry of the process, customers will experience absolutely no disruption to the film schedule at the Phoenix itself.

**Paul Homer's film choices**

The revolutionary plasticisation techniques mean that installation of the life-size cinema at Stratford should be completed by March 2012. When fully operational, The Phoenix at the Park, as this temporary structure will be known, will be offering a rich programme of British films. This will start with Tony Richardson's gem from 1962 *The Loneliness of the Long Distance Runner* and will alternate with *Chariots of Fire* from 1981. In case of the inevitable summer British downpour, *Séance on a Wet Afternoon*, a hit in 1964, will be a top draw for film buffs. And of course, if the medal tally is looking glum, visitors can sit back and watch Dennis Price and George Cole in the neglected classic of 1959 *Don't Panic, Chaps!*

Work on this exciting project is scheduled to begin on 1 April.

### THE WELLBEING COACH

Based in East Finchley, Dan Roberts offers coaching for stress, anxiety, career, relationships, weight loss and all-round mental and physical wellbeing. Experienced, professional and effective.

Call 07766 704210 or visit [www.danroberts.com](http://www.danroberts.com)



east finchley  
**smiles**  
expert general & cosmetic dentistry

**NHS CHECK-UPS £16.50**  
(this includes x-rays where necessary)

**NHS EXEMPT PATIENTS AND CHILDREN UNDER 18 ARE FREE**

**new NHS list now open**

member of the  
BDA and the BDHF



smile with confidence

**020 8444 3436**

144 The High Road, East Finchley, London N2 9ED

[www.eastfinchleysmiles.co.uk](http://www.eastfinchleysmiles.co.uk)

### YOUR TIME IS PRECIOUS!

WEST END QUALITY, COMPETITIVE PRICES, CLOSE TO HOME.....

A CUT AND FINISH WITH  
JO SUTHERLAND FROM £45  
ALL INCLUSIVE.

(WEST END SALONS FROM £85\*  
+TRAVEL+PARKING+HASSLE)

A 25% INTRODUCTORY  
OFFER ON ALL SERVICES\*\*

**JO SUTHERLAND**  
HAIR STUDIO

EXPERIENCE | TECHNOLOGY | PASSION

\*EXAMPLES ON REQUEST  
\*\*CONDITIONS APPLY

119 EAST END ROAD, LONDON N2.  
020 8444 9440

### East Finchley Baptist Church

Just off the High Road in Creighton Avenue N2

**Sunday Mornings at 10.30 am**

For more information  
please contact the Church Office  
Tel: 8883 1544 (Minister: Simon Dyke)

**Visitors always welcome**

## Do you have a story for us?

You can send your stories, letters, and photos by email to [the-archer@lineone.net](mailto:the-archer@lineone.net) or by post to The Archer, PO Box 3699, London N2 8JA. You can find out more about contributing and advertising at [www.the-archer.co.uk](http://www.the-archer.co.uk)





# Cash crisis at Avenue House

By Ann Bronkhorst

The completion of nearly a decade of work to improve the grounds of Avenue House, East End Road, was celebrated on Sunday 13 February. Supporters met to thank the groups and individuals responsible for all the planning, funding and sheer spadework involved. They also heard a bleak warning about the future of the mansion and its beautiful gardens.

## Bequest

Henry 'Inky' Stephens, son of the inventor of Stephens ink, bequeathed the large Victorian house and grounds to the people of Finchley in 1918. Since 2002 the Avenue House Estate Trust (AHET) has managed, without any council subsidy or grant, to meet the huge cost of maintaining a historic but long-neglected mansion (Grade Two listed) and grounds that are open to the public daily, dawn till dusk.

The grounds are on the Register of Historical Parks and Gardens and are remarkable for their varied landscaping, a large pond and rare specimen trees, some dating from 1859 when the original villa was built.

Thanks to a grant from Community Spaces and management by Groundwork, gates, fences, walls and paths have been improved and shrubs and bulbs planted, often using

volunteer labour. Other projects have been completed or are ongoing. A plaque commemorating this work is near the top gate.

## Cuts affect income

At the reception (hosted by Groundwork) Bill Tyler, Chair of AHET, pointed out that it costs around £80,000 a year to maintain the grounds as, in effect, a public park. To meet those costs, the mansion and its stable block must generate income from regular bookings and lettings. Due to the recession, however, bookings have dwindled and two tenants have vacated after losing their grants. Losing £35,000 of income in 2010 was a devastating blow to the Trust. Now, said Mr Tyler, it needs "a large injection of cash very urgently".

With Avenue House and its beautiful grounds at risk of closure, local residents are rallying round. A new Friends group is mounting a campaign of support; they can be contacted at [info@friendsofavenuehouse.org](mailto:info@friendsofavenuehouse.org). Donations should be sent to AHET at 17 East End Road, N3 3QE or via the website [www.avenuehouse.org.uk](http://www.avenuehouse.org.uk)

## A Local Handyman

available for general household & garden maintenance.

No Job Too Small

Free Estimates

Call: 0789 010 3831

or: 020 8350 2188

**simplicity3d studios**  
Designs with that extra sparkle  
Looking to get your business online? Call for a free consultation.  
**Web Design**  
Community & Business Sites  
3D Graphics  
Tel: 020 8341 9542  
[info@s3dsdesign.com](mailto:info@s3dsdesign.com)  
[www.s3dsdesign.com](http://www.s3dsdesign.com)

**Tom Hoyland**  
a Utopia Health Clinic, East Finchley  
• Reflexology  
• Traditional Thai Yoga Massage  
• Holistic Swedish Massage  
• Seated Acupressure Massage  
Utopia 020  
Tom 07941  
[tom@tomhoyland.co.uk](mailto:tom@tomhoyland.co.uk)  
Receive 10% treatment with



## brera gardens

- garden design • maintenance
- hard landscaping • interior & office plant displays
- soft landscaping • East Finchley based

Mob. 07939 557 934

Tel. 020 8365 3615

Email: [breragardens1@btinternet.com](mailto:breragardens1@btinternet.com)

**Slimming World**  
the club with the big heart  
Slimming World East Finchley can be found at:-  
East Finchley Methodist Church  
197 High Rd  
(opposite Creighton Avenue)  
**Wednesdays 9.30am, 5pm and 7pm**  
Telephone **Natalie** on  
**07889 252548** for all enquiries  
**SAVE £5**  
\*Half price membership until 21 April 2011  
**0844 897 8000**  
[www.slimmingworld.com](http://www.slimmingworld.com)

# Last ditch pleas for library

By Daphne Chamberlain

"You could call it a bad year, but the next was worse." That line of one of Fleur Adcock's poems generated wry laughter in East Finchley Library's meetings hall last month. Three days before Barnet announced its proposals for the borough's libraries, a capacity audience was demonstrating how important this one is to our community.

At an event organised by East Finchley Library Users' Group, Fleur read an entertaining selection of her poetry, several featuring East Finchley. Later, Peter Hart, Oral Historian at the Imperial War Museum, transformed himself and some of his audience into fighter pilots to demolish "the myth of the First World War aces".

## Avoiding closure

Shortly before the event, EFLUG's Polly Napper and Leslie Gilbert had met Cllr Robert Rams and Barnet Council officer Tom Pike, who have responsibility for libraries and museums. Polly and Leslie had emphasised our library's high usage, and the effect of closure on the many vulnerable people in our community.

They also asked the Council to avoid closing any branch, and were told that Barnet was looking at several options. These included sharing resources with other boroughs, and locating other council services within libraries.

## East Finchley library saved

The eventual outcome of the Council meeting on 22 March was that East Finchley library will remain open, but neighbouring Hampstead Garden Suburb library is to close.

EFLUG is an apolitical group of library users. Contacts are [pollynapper@btinternet.com](mailto:pollynapper@btinternet.com) or [www.eflug.org.uk](http://www.eflug.org.uk). Peter Hart also introduced the East Finchley Oral History Project. More on this in THE ARCHER next month.



Fleur Adcock and Peter Hart. Picture by John Dearing

# Memories of the code breakers

By Daphne Chamberlain

Ruth Bourne, who worked with the Bletchley Park code breakers, had never heard of their Enigma computers until she went to a lecture after the war. This was one of the surprise snippets for a capacity audience at Avenue House in February. Her talk raised £1,110 for the North London Hospice.

Most people know that Bletchley Park was vital to the Second World War victory, but when 18-year-old Ruth was assigned to Special Duties X section in 1944 she was unimpressed. She had joined the Wrens because she liked the sea, sailors and ships. "Breaking German codes? So what?" she thought. "Everybody breaks codes in Biggles books".

In fact, she became a bomb-operator in neighbouring Eastcote, acting on instructions from the code breakers. Mathematicians and crossword-compilers, they worked in such secrecy that only 32 people outside their immediate circle knew of their existence.

The Germans changed codes every 24 hours, and senders and receivers had to have complementary computers. Organisations such as banks had used Enigma machines since the 1920s, but Bletchley Park had the good fortune to work with

specially wired computers sent from Poland just before the war.

However, when types of code changed significantly, they were saved at first by two naval lieutenants who retrieved vital notebooks from a submarine.

## Breakthrough

Then, when new computers were used, there was complete bafflement. It was primarily the exhaustion of a German operator in Athens that led to breakthrough. He sent a very long and complex message to North Africa, which had to be repeated. Fatally, he used the same code, but this time with abbreviations. The abbreviations were the key to cracking the code and building a parallel computer.

All this was unknown to Ruth Bourne at the time, but now she is one of the guides on open days at Bletchley Park. For details of tours, see [www.bletchleypark.org.uk](http://www.bletchleypark.org.uk). For help and information about the North London Hospice, visit [www.northlondonhospice.co.uk](http://www.northlondonhospice.co.uk) or call 020 8343 8841/7672.

**Linda Sharp**  
Change Of A Dress  
Sewing Repairs  
And Alterations  
020 8444 4872  
07950 902 320

## Greene Driving School

East Finchley N2

From **£17.50** x 2 Hr lessons

**Safe driving for life**

**Low Co2 footprint 114**

**Eco & Low Maint Tuition**

**Pass Plus 4 cheaper**

**Insurance. [Greenedriving.co.uk](http://Greenedriving.co.uk)**

Call **John M.L.M.I**

**0773 851 4406**

## Eva Polish Deli

Specialist

in natural sausage

36 High Rd

East Finchley

London N2 9PJ

Tel: 020 8365 3113

## Cree Godfrey Wood Solicitors

Commissioners for Oaths

Hours: 9.30am to 5.30pm.

email: [admin@creegodfreyandwood.co.uk](mailto:admin@creegodfreyandwood.co.uk)

28 High Road, London N2 9PJ

Tel: 020 8883 9414 / 9496 0989

[www.creegodfreyandwood.co.uk](http://www.creegodfreyandwood.co.uk)





Martin School youngsters get stuck in to some of their five a day. Photo by Rachel Ellis.

## Easter Services in East Finchley

### All Saints Parish Church:

**Palm Sunday 17 April**, 10am, Solemn Mass with Blessing of Palms, Procession and Sung Passion. **Maundy Thursday 21 April**, 8pm, Mass of the Lord's Supper and Watch until midnight. **Good Friday 22 April**, 3pm, Sung Celebration of the Lord's Passion. **Holy Saturday 23 April**, 8pm, The Easter Vigil. **Easter Day 24 April**, 10am, Parish Mass of Easter Day.

### St Mary's Catholic Church:

**Palm Sunday 17 April** Blessing of Palms & Procession at all the Masses, 8.30am, 10am and 12 noon; Stations of the Cross at 6.30pm. **Monday 18 April**, 10am, Mass with Morning Prayer; 7.30pm, Service of Reconciliation, 7.30pm. **Tuesday 19 April**, 10am, Mass with Morning Prayer. **Wednesday 20 April**, 10am, Liturgy of the Word and Holy Communion. **Maundy Thursday 21 April**, 8pm, Evening Mass of The Lord's Supper. **Good Friday 22 April**, Annual Walk of Witness; 3pm, Celebration of The Lord's Passion; 7.30pm, Stations of the Cross. **Holy Saturday 23 April**, 8pm, The Easter Vigil. **Easter Sunday 24 April**, Mass at 8.30am, 10am and 12 noon.

### Holy Trinity Church

**Palm Sunday 17 April**, 10am, Blessing of Palms, Procession and Parish Communion. **Maundy Thursday 21 April**, 7.30pm, Washing of the Feet, Sung Communion. **Good Friday 22 April**, 10am, Liturgy of Good Friday. **Easter Sunday 24 April**, 10am, Festival Eucharist.

### East Finchley Methodist Church

**Maundy Thursday 21 April** United Service 8pm (at Ballards Lane Methodist Church) Holy Communion. **Good Friday 22 April**, 10.30am "Reflections on the Cross". **Easter Day Sunday 24 April** 10.30am, Celebration Service: Holy Communion Crèche, Easter egg hunt, refreshments.

### East Finchley Baptist Church

**Friday 22 April**, 10.30am, Good Friday Service, including communion (with crèche for 0-3 year olds). **Easter Sunday 24 April**, 10.30am with children's and youth activities.

## Pupils take pick of the crop

By Rachel Ellis

**Parents of pupils at Martin Primary School can now pick up their weekly fruit and vegetables on the school run. The new scheme allows parents to buy organic fruit and veg while at the same time raising money for the school.**

Orders are delivered to the school every Wednesday and 25 per cent of all sales go directly to the school. Dozens of parents have so far signed up to the Farmer's Choice Fund-raising for Schools scheme, which started at the beginning of the year.

Maria Nielson, of the Parent Carer and Teacher Association which is running the scheme, said: "Parents have reacted very positively to the variety, quality and the quantity of the produce. They've also commented that they have enjoyed trying out the new recipes included in the bags and being more adventurous in their choice of family meals."

All the organic fruit and vegetables are provided by Abel and Cole and it is a not-for-profit scheme. A list of the contents, which varies from week to week, is posted up on the Abel and Cole website. Vegetable bags cost £5, fruit bags £6.50 and £7 for a mixture of both.

Orders can be placed weekly or for the half term and are available to collect from the school playground. The PCTA hopes to raise at least £400 per term for the school.

Headteacher Helen Morrison said: "I'm pleased that we have a healthy, sustainable way to raise money for the school."

A friendly welcome awaits you

### EAST FINCHLEY METHODIST CHURCH

197 High Road, London N2 (opp. Creighton Ave.)

tel: 0208 346 1700

[www.eastfinchleymethodist.org.uk](http://www.eastfinchleymethodist.org.uk)

**Sunday service at 10.30 a.m.  
With Creche and Junior Church**

Worship Music Social events Toddler Group Wheelchair friendly  
e-mail: [info@eastfinchleymethodist.org.uk](mailto:info@eastfinchleymethodist.org.uk) Room hire tel: 020 8444 9887

### COMMUNITY FOCUS

.....Based within North London's new cultural centre, the artsdepot

Is looking to recruit new trustees, specifically individuals with experience in human resources, business management and governance

#### This is a volunteer position

We are an inclusive Arts Centre in an exciting phase of development. If you would like to contribute to the Management of a vibrant and important local charity, please send your CV and a covering letter explaining your interest in Community Focus' work to [tim.balogun@communityfocus.co.uk](mailto:tim.balogun@communityfocus.co.uk)

We promote cultural diversity and equal opportunities to all  
[www.communityfocus.co.uk](http://www.communityfocus.co.uk)

## Finchley Cricket Club ready for 2011 season

By Steven Selwood, Head Coach

**Finchley is the only club in Barnet or Haringey with Premier League status and is one of only a handful of clubs in the country with Premier League men's and women's teams. Having agreed with Barnet Council a 150-year lease on the ground at East End Road, the club now has a secure long-term future and so can continue to welcome new members. Qualified coaches and umpires are also welcome.**

The club puts particular emphasis on encouraging women's cricket and developing young talent. Finchley has joined forces with Gunnersbury WCC who will now be known as Finchley Gunns. They have several international and county players which is really encouraging for the ever-growing profile of the women's game. Finchley now has over 40 girl members with three teams and three women's teams.

The club has never been in such a strong position regarding youth player development. In 2010, Ross Sutcliffe at 14 became the youngest ever Premier League player. Fred Daeche-Marshall, Middlesex Academy player, is currently in Perth where he is training on the Justin Langer Programme and playing first-grade cricket. Teenager Daisy Moore's achievements have, of course, already been recorded in previous editions of *THE ARCHER*.

The club also has a large social membership and can be hired for private and company matches and functions. So why not drop in? You'll get a warm welcome from me, Josh Knappett (1st XI Captain) and the rest of the team. For further information, call the club on 020 8346 1822 or me on 07968 758220.

## World-class lodgers

By Pamela Kent

**I call them 'my boys'. Four first-class cricketers, currently playing in the World Cup in India, lodged with me in Hamilton Road during their training for county signings.**

The most famous is Eoin Morgan who plays for Middlesex and England. He started training for Middlesex County at The Academy in East End Road during his school holidays from Dublin and lodged with me from the age of 16, staying during the cricket seasons for five years until he bought his own home a couple of years ago.

Boyd Rankin, now a fast bowler for Warwickshire and Ireland, stayed with me for a couple of years whilst training and playing for Middlesex. Certainly a character to look up to, being over 6ft 8in tall and wearing size 15 shoes at

the age of 18!

Gary Wilson stayed until he was signed by Surrey as their wicket keeper. The Oval was too far for him to travel to each day from East Finchley, so he moved to a flat in Kennington. He is now wicket keeper for Ireland.

William Porterfield, former Gloucestershire captain and now captain of Ireland, also stayed for a couple of years whilst training at The Academy.

So, even if you're not a cricket fan, watch out for these guys. They were famous East Finchley residents. And you heard it first in *THE ARCHER*.

**FIGHT BARNET'S  
CPZ RISES**

Please support our High Court challenge  
Donate at [www.barnetcpz.blogspot.com](http://www.barnetcpz.blogspot.com)  
Cheques payable to 'Barnet CPZ Action' to  
88 Summerlee Avenue, N2 9QH

### Holy Trinity Church Church Lane, East Finchley Church of England

*We're a warm and friendly congregation  
who look forward to welcoming you*

**Sunday Parish Communion at 10.00 am**

Children's Sunday Club ♦ Meet over coffee after church  
Michael Stanway is happy to answer any enquiries:  
Tel: 020 8346 8591





## Open the page on a new library

By Jean Bailey

As we in Barnet battle to keep our libraries open, the parishioners of St Mary's Catholic Church in the High Road have been supporting the Aysanew Kassa Trust this year to build a library in Azezo, a town in Ethiopia that has never had one before.

Readers may recall the *ARCHER* article in August 2010 about the Aysanew Kassa Trust [Our Dream: a public library in Ethiopia]. Since then lots has happened and the trust is well on its way to reaching its target of £60,000. This means the walls are up and the roof is on; doors and windows are going in as we go to press. The aim is to complete the library and open it in October this year! If you want to check on the overall progress there is a display in the church porch or on the AKT website [www.aysanewkassa.org](http://www.aysanewkassa.org). We still need to raise the last £10,000, however: can you help?

### Making a difference

This small charity has already shown how co-operation between individuals, statutory agencies and non-government organizations (NGOs) can make a difference to the lives and health of individuals, their families and their community. The children of Azezo are a testament to what can be achieved. In the words of one: "You have changed my life forever." The heart of the charity's work is to ensure the education of children in this poor part of Africa; the charity focuses especially on providing access to education for girls and those high achievers who would otherwise be too poor to complete their education.

## Royal wedding street party

The bunting will be out in Hertford Road on the day of the Royal wedding on 29 April. A group of residents are organising a street party to celebrate the occasion and, they say, "the Small Society".

Other parties may be happening around East Finchley. Let us know if there's going to be one in your road and we'll give it some coverage.

The parishioners of St Mary's invite all of East Finchley to help complete the library by coming to support a fun day on the afternoon of Sunday 22 May. Please support us on the day or contact us on 020 8883 8722 or email [aysanewkassa@hotmail.com](mailto:aysanewkassa@hotmail.com).



The interactive map of Coldfall Wood is launched at Coldfall School. Photo by Keith Good



Pavement Pounders founders David Lay and Dr Maryanne Traylen

## Talks and walks

For walkers who like to learn about the history of the area they are visiting, Pavement Pounders Community Interest Company explores the heritage on our doorstep.

Founders Dr Maryanne Traylen and David Lay are respectively a writer and an artist, and both are teachers. For several years they have been providing walks and talks for The Institute, exploring the artistic and literary history of Hampstead and Highgate.

These events happen on a Saturday and the usual format is a one-hour illustrated talk and discussion in the classroom followed by a two-hour guided walk exploring the haunts of the artists and writers discussed. The aim is to accentuate the local connections while showing links with the wider world.

John Constable may have lived much of his adult life in Hampstead but his landscape paintings are appreciated by all. Similarly, Samuel Taylor Coleridge who lived the last 16 years of his life in Highgate, is a major figure in English literature.

This academic year, Pavement Pounders have offered eight talks and walks. Recent walks have included *Landscape and Patriotism*, where the group looked at the English landscape painting tradition, including a trip to the National Gallery rather than a walk, and on 26 March the talk and walk was *Constable and Hampstead*, which explored the sites in NW3 where our greatest landscape painter lived and painted.

Contact The Institute for further details. For 2011-12, Pavement Pounders plan to include talks, walks and gallery visits that explore Kenwood House.

**Cromwell Hall  
Residents' Association**

**Garage Sales  
in Abbots Gardens N2**

Saturday, April 16th 2 - 4 p.m.

All are welcome to browse.

## Pop up to the wood

By Ann Bronkhorst

If you go down to the Coldfall Wood website today you're sure of a big surprise, as the old song has it. The Friends of Coldfall Wood have installed a new interactive online map, designed by Miranda Waugh of communications agency Ask Auk and backed by Haringey's Make the Difference Fund. The map can be downloaded and printed for walkers, but has a number of other features, too.

An enthusiastic group of Friends, local people, Haringey councillors and representatives of community groups attended the map launch on Tuesday 1 March. Miranda Waugh and Friends' Chair Julia Cassells showed how the map works. 'Pop-ups' highlight points of interest such as significant trees or the ancient ditch and bank, and a historical feature lets users see how the wood has changed size, shape and function over 150 years.

### Learning resource

Earlier, Miranda along with Deborah Dudgeon, one of the Friends, introduced the map to teachers at two local primary schools, Martin and Coldfall,

and at Fortismere secondary school. They reported extremely positive responses from all the schools, with teachers planning to use the map in history, geography, citizenship and outdoor activities.

Local people with long memories may have their own unique stories and photos of Coldfall Wood. The Friends are hoping to collect these and to incorporate them into the map. Eventually, sound recordings, photos and wildlife sightings could be uploaded to create a wealth of additional features.

View the map at [www.coldfallwoods.co.uk/map](http://www.coldfallwoods.co.uk/map) and to pass on reminiscences and old pictures please contact [info@coldfallwoods.co.uk](mailto:info@coldfallwoods.co.uk).

### TELEPHONE FAULTS REPAIRED

50% CHEAPER THAN BT \* the POST OFFICE \* TALK TALK etc  
HOME \* OFFICE \* FACTORY  
LINES \* EXTENSIONS \* EQUIPMENT - TESTED & REPAIRED

Call RON COLLINS 0208 883 9325 \* 07748 278728  
email: [roncallsaver@yahoo.co.uk](mailto:roncallsaver@yahoo.co.uk)

**Bupa London 10,000**

Bank Holiday Monday, 30th May

(sold out, but we have places!)

Run for  
children with  
cerebral palsy

020 8442 2275  
[runs@bobath.org.uk](mailto:runs@bobath.org.uk)

**BOBATH CENTRE**  
FOR CHILDREN WITH CEREBRAL PALSY

[www.bobath.org.uk](http://www.bobath.org.uk)  
Registered Charity 279603



**ALMAR BUSINESS SOLUTIONS**  
Accountancy | Payroll & Book-keeping | Tax services

#### Our Services:

- Year End Accounts
- Tax Return Services
- Bookkeeping
- VAT Return
- Payroll
- Tax Services
- Company Formations
- Service Charge Accounting

#### Tailored packaged services offered for:

- Start-Ups
- Sole Traders
- Partnerships
- Limited Companies
- IR35
- CIS Contractors
- Charities
- Non-residents

#### Why choose us?

We offer an honest and friendly service.  
Fixed fees—no expensive hourly accountancy bills  
Non-Jargon and straightforward advice  
Reliable, honest and friendly accountancy service

For a **FREE** initial consultation, call **07894 473309** or email: [info@AlmarBSL.co.uk](mailto:info@AlmarBSL.co.uk)

## Japanese Acupuncture & Shiatsu

- Joint Pain & Sciatica
- Migraines & Headaches
- Digestive Problems
- Back & Neck Pain
- Insomnia, Anxiety
- Pregnancy, PMS

Ph 07795203107

UTOPIA 11 Leicester Mews, N2 9JL

**Fiona Hurlock** MACS MASS DUKAL  
[www.fionahurlock.com](http://www.fionahurlock.com)

**AJL**

Domestic Appliances Ltd  
6 Cheapside - Fortis Green - London - N2 9HP

WE SELL AND/OR REPAIR MOST BRANDS INCLUDING:

Built-In & Freestanding Appliances - Washing Machines - Dishwashers - Tumble Dryers - Vacuums Electric Ovens -  
Fridge Freezers - Hobs - Waste Disposals - Coffee Machines - Steam Ovens  
Microwave Ovens - Warming Drawers - Cooker Hoods

- ✓ Built-In Appliance Installations
- ✓ Authorised Miele Dealer & Service Agent
- ✓ Showroom with Working Appliances
- ✓ Discounts on Complete Kitchens
- ✓ One Stop Shop - Delivery, Installation, Disposal
- ✓ Spare Parts Stockist
- ✓ Vacuum Repair Workshop, Bags & Accessories
- ✓ Landlords, Letting Agents, Trade, New Developments

Tel: 020 8444 4303  
[www.ajldomesticappliances.co.uk](http://www.ajldomesticappliances.co.uk)

Tel: 020 8365 3484  
[sales@ajldomesticappliances.co.uk](mailto:sales@ajldomesticappliances.co.uk)

\*\*\* Engineers Required \*\*\*





Staff and pupils plant one of the apple trees at Martin Primary School.

## Apple for the teacher

A new 50-tree apple orchard was planted on part of the playing field at Martin Primary School on Thursday 17 February. Over 10 different varieties of apple tree were planted by the school children, parents and key partners who have supported the scheme.

The idea for an orchard has been developed by the school in conjunction with the East Finchley Community Trust. All the trees were donated by Wates Construction, currently building new affordable housing at Lancaster Gardens, N2, through their supplier Woodlands PH Ltd.

Roger Chapman, Chair of the East Finchley Community Trust said: "The orchard will be a tremendous asset to the school. Educationally it will give great benefit and of course the produce will be really good to eat or, if juiced, to drink. I'm really pleased that we managed to get the support of firms working locally to fund the orchard."

## New air cadets have high hopes for the future

By Diana Cormack

It was a double first at Finchley squadron HQ on Friday 11 March as 12 teenagers signed up for flight training. It was the largest number to join in one session since the air training squadron was formed, and the first night for their padre, Father Kevin Ryan.

Father Ryan and the group's Commanding Officer, Mr Alborne, were there to hear the youngsters make the required promises and declarations, after which the cadets marched out applauded by their families and squadron members as they left to put on their uniforms proudly.

### Former cadets return

Also present at the ceremony was former local cadet, Pilot Officer Richard Davoren, who joined the RAF in 2009 and is now training at RAF Cranwell. Former cadet Olivia Elmakenzie, 19, was also in attendance. Another success story from the centre, Olivia won a coveted flying scholarship to train in Dundee, one of the highest awards an air cadet can achieve. Both she and her 16-year-old sister Miranda have gliding scholarships and have been asked to become civilian instructors.

Activities are not limited to flying and gliding (although it is possible to work towards a BTEC in Aviation Studies) and not all cadets intend to join the armed forces. For some, the well-equipped centre is considered more of a youth



CO Alborne and Father Ryan listen as the cadets promise.

Photo by Diana Cormack.

club. There are plenty of things for 13 to 17-year-olds to do, including the Duke of Edinburgh Award, a wide range of sports, adventure training, target shooting, first aid and much more. It is also another way for them to make friends, to learn new skills and develop confidence.

Parade nights at the centre, which is next to the Lido complex, are on Tuesdays and Fridays from 7.30-10.00pm. For further details telephone 020 8444 9861 or visit [www.393atc.50megs.com](http://www.393atc.50megs.com)

## Transport and science at Manorside

The Reception children at Manorside Primary School have been learning about transport and enjoyed a bus trip to Mill Hill as well as a ride in the back of a cab. Year 5 and 6 pupils enjoyed a visit from the Royal Institute in February where they explored different approaches to maths.

Science Week was celebrated throughout the school with experiments of all kinds. A company called Night Owls brought owls into school, and the children enjoyed Fossil Fest with Jules the Wildlife Man. A number of Year 6 children also celebrated science week at Middlesex University enjoying activities and competitions. To see more of what's going on at Manorside Primary School, visit [www.manorsideprimaryschool.co.uk](http://www.manorsideprimaryschool.co.uk)

## YOUNG ARCHER

### Splashing out for charity

Seven-year-old Archie Price is hoping to raise £1,000 for Marie Curie Cancer Care by taking part in the Swimathon ([www.swimathon.org](http://www.swimathon.org)). Archie, who lives in Durham Road, East Finchley is competing in the event at Finchley Lido, on 10 April. He will be taking part in the charity event with his parents Chris and Wendy Price as part of Team Goggleblog.



Archie is getting ready for another Swimathon.

A pupil at Martin School, Archie is aiming to swim at least 60 lengths of the pool (1.5km) while the team will be swimming 200 lengths (5km) between them.

Dad Chris Price says: "Archie took part in the Swimathon last year and despite the fact that he hadn't been swimming that long he managed a fantastic

28 lengths. He is hoping to better that this year and aiming to swim 60 lengths. We are really proud that he wants to take on this challenge to help others."

You can sponsor Archie and Team Goggleblog at [www.archieprice.com](http://www.archieprice.com). For details on how to take part in this year's Swimathon go to [www.swimathon.org](http://www.swimathon.org).

**Keren's Classes**

Afternoon classes at the heart of Hampstead Garden Suburb.

Capoeira, Theatrebugs, ballet, Judo, Movement & Music, Krav Maga and Football classes

The Pavilion • Lyttelton Playing Fields • Kingsley Way •  
London N2 0EH • T: 020 8455 9646 • [classes@kerensnursery.com](mailto:classes@kerensnursery.com)

### ALL SAINTS CHURCH

35a Durham Road, East Finchley,  
London N2 9DP

#### Palm Sunday

10.00 am Solemn Mass  
with Blessing of Palms,  
Procession and Sung Passion

#### Maundy Thursday

8.00 pm Mass of the Lord's  
Supper  
and Watch until Midnight

#### Good Friday

3.00 pm Sung Celebration  
of the Lord's Passion

#### Holy Saturday

8.00 pm The Easter Vigil

#### Easter Day

10.00 am Parish Mass  
of Easter Day

Vicar: Fr Christopher Hardy SSC  
020 8883 9315

[www.allsaints-eastfinchley.org.uk](http://www.allsaints-eastfinchley.org.uk)





## Anyone for tennis?

By Steliōs Pavlides

**Fortis Green Tennis Club, next to 31 Southern Road, is able to offer some free tennis bursaries to local youth for the 2011 season, thanks to a grant from the East London Community Fund given primarily to help refurbish the club's pavilion but also to increase its community involvement.**

To qualify, candidates should be under 18, reside in the wider East Finchley/Muswell Hill area and have some sporting skills. They should be young people who (a) may not have the opportunity or means normally to join a tennis club or (b) are experiencing difficult family circumstances and could benefit from the social aspect of club play or (c) deserve recognition for a worthwhile achievement at school or elsewhere.

Limited free coaching will be available as an introduction but some prior tennis experience would be advantageous. Parents or teachers wishing to put forward a candidate are invited to contact the Membership Secretary.

The club took advantage of the winter closure to refurbish its

clubhouse and a regular groundsman now maintains the four shale courts, resulting in a better-playing surface.

Members have the opportunity to play both social and competitive tennis. As ever, group and individual coaching is available to members and non-members and there are popular drop-in sessions for both juniors and adults. New members of all ages and levels are welcome and, for 2011, the £25 joining fee has been waived. People are encouraged to walk in on Saturday afternoons to look around and have a chat.

For further information visit the club website at [www.fortisgreentennis.co.uk](http://www.fortisgreentennis.co.uk) or contact the Membership Secretary on 020 8883 7723, email: [memberships@fortisgreentennis.co.uk](mailto:memberships@fortisgreentennis.co.uk)

## Who says accountancy is boring?

*Gill Steiner thought being an accountant was a dull job involving poring over endless figures and a mind-numbing amount of cross-checking until she talked to local accountants Katrine Richardson (pictured below), of Metric Accountants, and Leo Abeles (right), now retired. Katrine and Leo both impressed on me that a significant part of the job involves helping clients to understand the financial side of their business and coaxing them to confront financial realities by maintaining management accounts.*



financial information.

Without those accounts clients tend to be unaware what profit or loss they make each month; it is easy to see why people want to shut out this potential pain. Leo pointed out that in the current economic climate "cash is king" so banks making loans or giving overdrafts expect clients to both monitor and control cash flow closely. Good sales are all very well, but if you don't collect your money you will rapidly have a problem.

### People-oriented

In her work, Katrine meets local entrepreneurs and says it is inspiring to see how people earn a living from their skills. Accountants need to have commercial awareness and an interest in small business, as well as being knowledgeable, personable and aware of recent regulatory changes. Leo pointed out that accountants have to issue warnings about transparency as they have to report money laundering.

So it seems accountants do maintain accounting records but the job is far more people-oriented and potentially rewarding than I ever expected.



Katrine finds that clients setting up new businesses need help and advice to make choices between systems, keep simple records to show the flow of funds and plan for deadlines. Accountants have to convince people of the need and benefit of updating records regularly, or at least ensure they fling all receipts in the proverbial shoebox and then pay an accountant or book keeper to update the records.

### 'Cash is king'

Another aspect of the job is advising clients about legitimate costs of the business, which can reduce tax bills and help with VAT, PAYE, national insurance and other taxes. A key task is helping businesses put together management accounts that reflect performance, profitability and key

### Midhurst Butchers

Certified organic meat  
at reasonable prices  
Free-range poultry  
Home-made sausages  
(including Boerwors)

2 Midhurst Parade,  
Fortis Green, London N10  
Tel. 020 8883 5303

## Cari opens her secret diary

**When it came to celebrating the publication of her first book *Secret Diary of A New Mum (Aged 43 1/4)*, local author Cari Rosen was determined to find a venue nearby for the launch.**

"Where better than the Muswell Hill bookshop?" she says. "It's fantastic to have such a thriving independent shop on our doorstep and it proved to be the perfect place to hold the party."

Friend and TV celebrity Timmy Mallet was one of the guests at the launch.

The book is a humorous memoir, the story of Cari's own 'late' motherhood and, she says, a chance to set the record straight.

"The papers continue to be full of myths and scare stories about older mums, so I wanted to tell it like it *really* is, warts and all. Even in this day and age any woman giving birth over the age of 35 is classified as a geriatric mother, yet in this part of North London it's incredibly common to have a baby in your late 30s or early 40s."

After a long career in television production, Cari has suddenly found herself on the other side of the camera.

Her favourite moment so far? "Definitely this online



Cari Rosen celebrates the launch of her book with Timmy Mallett.

review from a reader: 'I laughed until I almost wet myself. Though I do have a urine infection.'"

*Secret Diary of a New Mum (Aged 43 1/4)* is available online and at all good bookshops.

## KALASHNIKOV KULTUR

By Ricky Savage, the voice of social irresponsibility

## Wedding bells ding dong

**Just when you thought it wasn't safe to venture out into a world of cutbacks, we get the bread and circuses. Yes, folks, it's time for Britain's most dysfunctional family to do their bit and give us another Royal wedding. This one is the nearly big one. This is where a balding army officer marries a perfectly ordinary millionaire's daughter and we get a day off work.**

According to the Morning Mule, Kate is normal, ordinary and once had a job. This means she is like you and me, apart from the money, the private education and the money. Her fiancé is different; he is part of the Weird Windsors and that means she must be mad to marry him for anything except the cash and the castles.

Where to start with the weirdness? William's granddad is part Greek, but mostly German reactionary. His father talks to trees and his mother was so undereducated her academic achievements were an O level in ironing and a best-kept hamster award. Then there are the embarrassing uncles: Andrew, a man who hangs around with despots, and Edward, whose greatest moment was It's a Royal Knockout. And don't forget Auntie Anne who prefers horses as they're generally more intelligent than her husband or brothers.

Then there is their dress sense. William will be getting married in uniform, but not one he has actually earned unless he really is an admiral in the Ruritanian Navy. Andrew will be over-dressed with medals he didn't win and Charles might have reached the dizzy heights of tug boat captain but he will still be dressed as a Lord High Field Marshal. Which explains why Harry has had his Afrika Corps uniform cleaned.

So, as the word united is removed from United Kingdom just like the great was removed from Great Britain the world can turn on, tune in and despair as we do what we do best and remind everyone that behind a modern democracy a feudal heart still beats.

### Human Resource Solutions Plus

Helping you to manage, train  
and develop your employees  
at a commercially sensible cost.

[www.hrsp.net](http://www.hrsp.net)

Richard Pell: [info@hrsp.net](mailto:info@hrsp.net) • PO Box 27013, London, N2 0WX

HRSP

### H. A. MOONEY

Painter and Decorator

- FREE quotes and references
- Flexible hours to suit you
- Interior and Exterior
- 25 years experience
- Private and Commercial

Tel: 02083434105

Mobile: 07714 242 459



## Volunteer advocates needed

**Advocacy in Barnet is an independent advocacy service supporting people who use community or health services to have their say, communicate their needs and make informed choices obtaining services in the way they want.**

Advance is a new project (through Advocacy) that aims to improve the quality of care for older people. Advance provides advocacy to those in care homes and day centres.

The project recruits volunteers over 50 years of age and trains them to become advocates. Advance aims to place volunteer advocates in the 120 care homes and day centres used by older people in Barnet.

Advance are currently recruiting volunteers to help improve the quality of care that older people receive.

As a volunteer you will:

- visit older people at care homes, day care facilities, luncheon and social clubs
- support and empower older people in speaking up for themselves

- support the decisions and choices of the person you are advocating for.

As a volunteer you will receive:

- free training and development opportunities
- enhanced Criminal Record Bureau check
- ongoing support and supervision
- travel expenses

To apply, contact [www.advocacyinbarnet.org.uk](http://www.advocacyinbarnet.org.uk) or Heena/Janet on 02082013415 or [heena@advocacyinbarnet.org.uk](mailto:heena@advocacyinbarnet.org.uk). The next training round takes place on 5, 12 and 26 April 2011.





## Regular Events SPORT & FITNESS

- ❖ **Badminton** Weds eves 8-10pm all abilities, contact George 8349 0170 or John 8444 7163.
- ❖ **Finchley & Hornsey Ramblers Group** Call Vivien 8883 8190
- ❖ **Glebelands Indoor Bowls Club**, Summers Lane N12. New and experienced bowlers welcome.
- ❖ **Keep fit for the Retired** on Wednesdays, Christ Church N12. Call Bridie 8883 5269
- ❖ **Muswell Hill Bowling Club**, Kings Ave, N10. New & experienced bowlers welcome. Tel: 8883 0433.
- ❖ **Pilates** in East Finchley, qualified teacher. Contact Dee on 8883 7029
- ❖ **Pilates class** Weds 3.30 & 7pm at Ann Owens Ctr, N2. Call Penny 8444 2882.
- ❖ **Tae Kwon Do** for children & adults at Finchley Lido Mon & Fri 7-9pm 07949 612 706. [www.taekwondo-uktd.co.uk](http://www.taekwondo-uktd.co.uk)
- ❖ **Tai Chi class** at EF Methodist Ch, Weds at 1pm. Call James Drewe 8883 3308 or [james@taiji.co.uk](mailto:james@taiji.co.uk)
- ❖ **Tennis club** with four clay courts off Southern Road. Call 8883 7723.
- ❖ **Yoga, breathing & relaxation**. Weekly drop-in classes - N3, N6, N10. Phone Judy on 07956 375607.
- ❖ **Yoga**, pregnancy yoga, meditation classes. Call Sunnah 07941 321 772 or see [www.stretchingpeople.co.uk](http://www.stretchingpeople.co.uk).

## MUSIC, DANCE & CREATIVE ARTS

- ❖ **Art Classes**. For info call Henry on 8888 5133.
- ❖ **Ballroom Dance Classes**, Wednesday eves for beginners & improvers. St Mary's Church Hall, N3. 8444 0280.
- ❖ **Ballroom & Latin American Dance Classes** - beginners & improvers. Wed & Fri eve, Bishop Douglass Sch. 8207 2323.
- ❖ **Creative writing classes** in informal, friendly atmosphere. Tel Sallie Rose 020 8444 7217.
- ❖ **Drama Classes** for 11-15 year olds. Mondays 6.30-8pm. Contact Dominic Conway 0777 284 3958
- ❖ **East Finchley Writers Group**, Weds at the Old White Lion. Contact Carola 8883 5808 or Lilian 8444 1793.
- ❖ **East Finchley Poetry Writing Workshops**. Monthly on Saturdays. Contact Dennis Evans 8346 9528.
- ❖ **Finchley Jazz Club: Live jazz** on Mon 11 & 25 April at 8.15pm, Wilf Slack Cricket Pavilion, East End Rd, N3.
- ❖ **Memory Lane Singing Club** - friendly singing club meets every Friday in Finchley. Call Valerie 8458 4508.
- ❖ **Over 50s Tea Dance** at Christ Church, North Finchley. Every Weds, 1pm. 020 8444 0280.
- ❖ **Learn to sing** at Finchley Methodist Church, Ballards La. Call 8888 4412.
- ❖ **SwampRock** Louisiana Dance Club. Live music. Contact 07957 344 724 or [www.swamprock.org.uk](http://www.swamprock.org.uk).
- ❖ **Symphonic Wind Orchestra** Contact Caroline Egan 8340 2706
- ❖ **Traditional music** at T.O.C. (The Old Crown) Highgate Hill on 1st & 3rd Tue of month, 8.30pm. Come to join in or listen.

## CLUBS & SOCIAL

(See p8 for Parent & Toddler Clubs)

- ❖ **Bingo evening, 8pm Sundays**, at the Constitutional Club, The Walks, N2.
- ❖ **Bingo Club** Mondays 7-9pm, Green Man Centre, Contact: Jan 8815 5452
- ❖ **Contact Lunch Club** Tuesdays at the Green Man. Call 8444 1162 to book.
- ❖ **Finchley & District Philatelic Society**, Contact Brian 8444 3251
- ❖ **French conversation** in small friendly group with native speaker. 8444 9395.
- ❖ **Friends of Cherry Tree Wood** [www.cherrytreewood.co.uk](http://www.cherrytreewood.co.uk) or 8883 7544.
- ❖ **Haringey Recorded Music Society** informal meetings locally. Call David Moldon on 8361 1696.
- ❖ **LGBT?** 1st Weds every month in a local pub. Welcoming atmosphere. Email [efinchleylgbt@hotmail.com](mailto:efinchleylgbt@hotmail.com)
- ❖ **Muslim Lunch Club** 1st & 3rd Weds, Green Man. Call 8444 1162 to book.
- ❖ **North London Bridge Club**, Muswell Hill. Contact 8348 3495
- ❖ **Northside Bridge Club**, EF Methodist Church, Thurs 7.30-11pm. 8346 8145.
- ❖ **Jewish Friendship Club** for over 60s, Tues 1-3pm at Muswell Hill Synagogue, Tetherdown. Call Anita 8886 6140.
- ❖ **Muswell Hill Tetherdown Bridge**, contact 8883 4390
- ❖ **Probus Lunch Club** for retired professionals. Call John 8883 8114.



Christopher Hunter and the double bass.. Photo courtesy of The Noontide Sun

## Christopher's highly-strung co-star

It may be all doom and gloom in the city but here in East Finchley the sun is shining. Established actor Christopher Hunter, long-time resident of the county roads, has taken the exciting step of forming a new theatre company, The Noontide Sun.

The inaugural production is the brilliant one-man play *The Double Bass* by Patrick Süskind, award-winning writer of the novel *Perfume*. Funny and tragic, it is the compelling tale of a frustrated musician and his ubiquitous instrument. He is at a crossroads in his life and he has an enormous choice to make. Will an act of daring ruthlessness change his life forever?

Christopher has wanted to perform the play since reading it more than 20 years ago. Recently a double bass has moved into his house and taken over life there. Although Christopher generously introduces the double bass as his co-star it is quite clear who is the dominant character in their relationship, and it's not the actor.

*The Double Bass* comes to the New End Theatre, Hampstead after opening in Colchester. Tickets are already starting to sell out for the run from 6-24 April. Telephone the box office on 0870 033 2733 and visit Christopher's website at [www.thenoontidesun](http://www.thenoontidesun).

## An evening of poetry and music

Celebration Press invites you to an evening of poetry and music at the Church of Mary Immaculate & St Gregory the Great, 82 Union Street, Barnet EN5 4HZ. East Finchley resident Dennis Evans will be reading from *Paper in the wind* and music will be provided by Heather, Janette, Louli & Steph. The event takes place on Saturday 7 May at 7.30pm and half of all proceeds will go directly to Cherry Lodge Cancer Care. Admission is £10 and includes a copy of *Paper in the wind*.

## What's On...

### Tuesday 5 April

- **Evening Carers Group** meeting on care home selection, 7pm, Community Networks, 27 Castle Road, N12.

### Wednesday 6 April

- **North London Hospice Art and Opera Lecture Series, Caravaggio: Sacred & Profane** by Lucrezia Walker, 11.30am-2pm at Avenue House, East End Road, Finchley N3 3QE. £20 including coffee and sandwiches. Contact Valerie Spencer on 8906 3134.

### Thursday 7 April

- Author Dave Robson talks about his new book *The Five Pillars of Happiness*, Alexandra Park Library, Alexandra Park Road, N22, at 7.15pm.

### Sunday 10 April

- **Fortis Green History Walk**, approximately 2.5 hours, starting from the United Reform Church Hall, Tetherdown, at 2.30pm and taking in the area's hidden history. Tickets £2. Contact Joy Nichol on

020 8883 8486 for more details.

- **Fabulous Finchley: guided walk** with City of London guide Paul Baker. Explore 1,000 years of Finchley history. Meet at Finchley Central tube (Ballards Lane exit) 2.30pm. Walk finishes at East Finchley tube. Contact Paul on 020 8440 6805.

- **Alzheimer's Society Sunday Club**. Barbara Knott McCaire talks about gardening myths.

- **Free concert at East Finchley Methodist Church**, High Road, 7.30pm. *The Ladies Entertain*: Andrea Whittaker, soprano, Viola da Cunha, mezzo soprano, Jane Rosenberg, mezzo soprano and Muriel Ray, piano, perform their favourite songs about women or by women composers. Collection in aid of Juvenile Diabetes Research Foundation. Venue fully accessible to people with disabilities.

# Peter Donohoe at The Red Hedgehog

Review by Ken Carter

**Peter Donohoe is a world-renowned great pianist. He is a great bear of a man, robust in manner, but gentle in speech. His utterly serious concern is to show off the music to its best living advantage. With full-blooded individuality, he lends panache, distinction and style in service to the music.**

The works on the afternoon's programme at the Red Hedgehog near Highgate Station (Liszt, Chopin, Schumann and Mendelssohn) were largely conceived and largely presented. Donohoe's performances are grandly sculpted. Through his keen sense of form and drama, musical phrases become blocks of sound, dynamically shaped and projected forward in a thrust of life-wresting urgency.

In his hands, the music lives and breathes with inner vitality. He delivers robust delineations of light and shade, vigour and passion, an almost brutal

directness and moments of great and tender gentleness. His performances are imposing. They engage you.

His choice of programme made demands. Late Chopin (*Polonaise-Fantaisie*/ *Ballades 3 & 4*) is dark, musically searching and rides the keyboard with restless unease, deeply uncertain. The Schumann *Arabesque* and Mendelssohn *Andante & Rondo op. 14* were attractive, light-weight tracery. The Liszt pieces *Années de Pèlerinage* were serious-minded depictions of places. In the first of the Venezia pieces, for example, I certainly heard the gondolier's song. Then, soon after, I heard - yes, heard! - the glowing sheen on the lagoon's waters in the light from the sun. This was writing and interpreting of distinction.

## Small is beautiful

**For their first show at artsdepot, East Finchley Open artists are presenting an exciting and innovative range of small works. With the challenge 'Small is Beautiful', EFO members have submitted works that all measure 13 x 18cms or less.**

Painters, photographers, jewellers, ceramicists and textile artists all took up the challenge. The EFO says the diversity of the response makes the display exciting and novel. The show runs until 30 April at artsdepot in North Finchley and entry is free.

E-mail your listings to: [the-archer@lineone.net](mailto:the-archer@lineone.net)

Linda Dolata to explore the native plants and associated animals. Starts 2pm from Heath entrance by Kitchen Garden, Hampstead Lane, and should last about 1.5 hours. Sensible footwear advisable.

• **Evening of poetry and music** in aid of Cherry Lodge Cancer Care. Poetry read by Dennis Evans with music by Heather, Janette, Louli and Steph. Church of Mary Immaculate & St Gregory the Great, 82 Union Street, Barnet EN5 4HZ at 7.30pm. Admission £10, including a copy of *Paper in the wind* by Dennis.

**What's on at artsdepot, North Finchley**

**An Audience with Imran Yusuf**, Thursday 7 April, 8pm. Sunday Buzz Free: **Dunajska Kapelye**, Sunday 10 April, 1pm-2.45pm. **Private Peaceful**, Thursday 14 to Saturday 16 April, 7.30pm and 3pm Sat. **National Theatre Connections, Regional Festival**, Tuesday 12 to Saturday 16 April. **Sunday Buzz Free**, Sunday 17 April, 1pm-2.45pm.

### Saturday 16 April

- Browse for bargains at **garage sales** in Abbotts Gardens, N2, 2-4pm. Organised by Cromwell Hall Residents' Association.

### Thursday 28 April

- **The Finchley Society** hosts *Slides of Yesteryear and Planning Issues: North Finchley*, presented by Derek Warren. 8pm, Trinity Church Centre, 15 Nether Street, N12. Non-members very welcome. Admission £2.

### Tuesday 3 May

- **Evening Carers Group** meeting with Dr Marc Lester, Consultant Old Age Psychiatrist, 7pm, Community Networks, 27 Castle Road, N12.

### Wednesday 4 May

- **Tumbleweed Comedy**, Old White Lion, High Road, 7.30pm. Acts include Holly Walsh, Cariad Lloyd, Thomas Nelstrop and Sara Pascoe.

### Saturday 7 May

- **Guided walk on Hampstead Heath** with official Kew guide



**Editor****Not too late to drop  
these parking charges**  
Dear Editor,

For many of us owning a car is a necessity, and even those residents who are not car owners but on limited incomes still have to have a supply of visitors' vouchers for workmen, carers, district nurses, and family members checking that older relatives are OK.

Like many of my neighbours in East Finchley, I feel that Barnet's cabinet has not thought through the effect its proposed parking charge increases will have on what may possibly be a minority of residents, who feel that they are being made to subsidise the more affluent parts of the borough. It certainly annoys us when we are aware that the Department of Transport has indicated that there will be no reduction in the amounts it makes available to the various local authorities, and this would include Barnet, for upkeep of the roads. It infuriates us when, as reported in the Ham & High, Barnet has spent over £15,000 on voice coaching for council officials. If these skills are so important for the officials to carry out their jobs and presumably would have formed part of the job description, why couldn't Barnet have employed officials with these skills in the first place? To expend such a large amount seems like shutting the stable door after the horse has bolted.

I could expand on reasons why the parking fees should not be increased, but it would only be to reiterate arguments already put by other angry and fed-up residents. Many of us feel it is likely that such proposed increases are in fact unlawful as the appropriate consultation process has not been followed through. So, no wonder residents are annoyed at being faced with such increases being imposed on us when the council wastes money like this. It is not too late for the proposed parking fees to be revisited and reduced.

**Yours faithfully,**  
**Joyce Arram,**  
**Summerlee Gardens, N2**

**Source of local news**  
Dear Editor,

I have been asked by The Finchley Society to assure you of our admiration and delight in receiving *THE ARCHER*. It comes to our address at Avenue House and is relayed to the archives in the basement where it is eagerly read before reaching our members.

We are, of course, appreciative of its local and good news which, alas, in spite of approaches by David Smith, our chairman, is not very evident in the commercial so-called local papers. We are concerned that the team keeps going on this excellent source of local news.

**Yours faithfully,**  
**Barbara Warren,**  
**Chair, Administrative Committee, The Finchley Society**

Send your correspondence to: "Letters Page",  
*The Archer*, PO Box 3699,  
London N2 8JA or e-mail  
[the-archer@lineone.net](mailto:the-archer@lineone.net).

Letters without verifiable  
contact addresses will not be  
reviewed or printed. Contact  
details can be withheld, however,  
on request at publication.

**No more NHS  
counselling**

Dear Editor,

I recently received a letter from my medical practice informing me that from March 2011 until further notice there will be no NHS counselling service within general practice. According to the letter I received, all the patients from my practice have been informed that there will be an in-house private counselling service.

A 30-minute free consultation can be arranged as an introduction. If the patient accepts to have counselling, the cost will be £45 for 30 minutes and £80 for one hour. This is by appointment. Counselling can be beneficial and you may not need further treatment.

If you can't afford the cost of counselling, what is the alternative? Perhaps talk to your GP, who will not be able to afford the time? Without treatment, patients may even end up in an institution, costing the NHS even more money in the long run. Is this the beginning of the end of the NHS?

**Yours faithfully,**  
**Gisele Mack,**  
**Summerlee Avenue, N2**



By Adam Justice-Mills

**We had a bicycle stolen from outside the house (not the first time). Locked-up but too tempting. Bike locks are just deterrents: the only safe bikes are ugly bikes and hidden bikes (the more bits you leave on it, the less chance you'll get it back).**

Then a friend said they were looking for a second-hand bike and it got me thinking. Cycling is part of our family life: commuting, fun in the park, popping round to friends, shopping, touring and on holiday. I've taught cycling, from beginners to would-be commuters. What stops people cycling more?

**Tips and training**

Weather, traffic, hills and practicalities, perhaps. My least favourite weather is freezing fog, though drizzle at dusk is a close second (I wear glasses). Happiest purchases are waterproof socks and CatsEye LED lights.

London traffic can be terrifying, so knowing how to cycle with confidence on real roads is a must. Cycling your prospective commuting route with an instructor, identifying easy paths and danger points, will really help. Hills

**The life and times of Peter  
Bayley**

By Sheila Armstrong

The recently retired Phoenix projectionist Peter Bayley is in the news again as a short film has been made about his life by local filmmakers Victor Martinez and Madeleine Pearce. It is hoped that it will be screened in the future at the Phoenix and will definitely be on the cinema's website.

This film about Peter does not just include his time at the Phoenix but, director Victor Martinez told *THE ARCHER*, is a personal documentary about his whole life. It is financed



Peter Bayley takes his seat at the Phoenix. Photo by Victor Martinez

by Victor and Madeleine, both of whom work in TV and were inspired to make the film having met Peter recently.

*THE ARCHER* managed to catch up with Peter on the 143 bus in late February shortly after filming was finished. He said he was looking forward to seeing the whole film when it was finished. When asked if he missed the Phoenix he said, "Funnily enough I don't". Obviously he is having a busy and happy retirement.

**Phoenix at  
the Olympics**

Many of you may have twigged already but our story about the Phoenix Cinema on page 4 is our belated April Fool.

Unfortunately, there'll be no moulding work and the cinema won't be making an appearance in the Olympic park. Although, come to think about it, it's not such a bad idea...

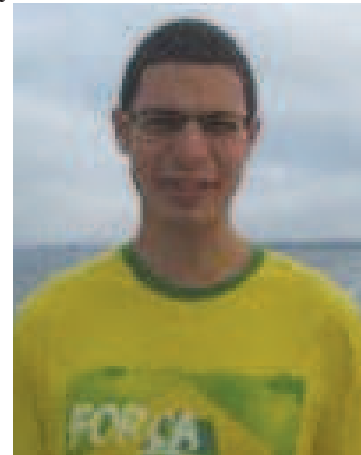
**Double challenge for  
charity fundraiser**

By Laura Wheadon

It's a case of the road twice travelled for fundraiser Ben Charkham, as he prepares to undertake two sponsored challenges to raise money for the North London Hospice.

On Sunday 8 May, Ben will take part in his fourth annual Jetstream Triathlon at Hatch End, Pinner. This gruelling challenge involves a 400m swim and a 17km cycle, rounded off with a 3km run. Then on Sunday 10 July, Ben will take part in the British 10k London Run around Central London. Ben enjoys the atmosphere when running with thousands of other fundraisers and especially relishes the challenge of raising lots of money for a local charity.

North London Hospice provides specialist care and advice on the relief of symptoms, 24 hours per day, seven days per week. As well as a 17-bed inpatient unit and day centre, the multi-disciplinary team offer practical care and symptom control at home. Support is extended to families, friends and



Ben Charkham is ready for a double challenge.

carers. North London Hospice is a registered charity, and all services are provided free of charge.

If you'd like to sponsor Ben and help raise money for North London Hospice, you can do so at [www.justgiving.com/Ben-Charkham](http://www.justgiving.com/Ben-Charkham). Good luck, Ben!

**Klages Plumbing & Heating Agency LTD.**

CONTACT TELEPHONE No: 020 8346 7218 / 8636

**KLAGE****A NAME IN PLUMBING FOR OVER 40 YEARS****eastfinchleyclinic**

Wendy Longworth & Associates physiotherapy practice offers a variety of treatments at the clinic, or off-site, in patients homes, nursing homes, private hospitals and other organisations.

- Back Pain
- Neck Pain
- Whiplash Injury
- Sciatica
- Sports Injury
- Frozen Shoulder
- Arthritis
- Tennis Elbow
- Sprain or Strain
- Rehabilitation
- Neurological
- Stroke

[www.eastfinchleyclinic.co.uk](http://www.eastfinchleyclinic.co.uk)

East Finchley Clinic  
2-3 Bedford Mews  
Bedford Road  
London N2 9DF

**020 8883 5888**  
FAX: 020 8444 8874

**AP Exclusive in the UK to:  
Gentlemen's Barbers****CRAZY BULL Hair Products**

"You deserve the right  
to have beautiful & stylish hair every day"  
50 High Road, East Finchley, London N2 9PJ  
t: 0203 441 8048







Shoes, Trainers, Sandals, Bags and Luggage

Complete Repair Service by a craftsman  
Same day if required

Key Cutting

1 Manor Park Rd. N2, behind 88 Church Lane, opposite Trinity Church  
Tel: 07956 329 150 Open 12-7pm

# THE ARCHER

Published by East Finchley Newspapers, P.O. Box 3699, London N2 8JA. www.the-archer.co.uk



## Royal visitor at Bobath Centre

The Duchess of Gloucester visited the Bobath Centre for Children with Cerebral Palsy in East End Road on Tuesday 8 March. The Duchess, who has been a patron of the children's charity since 1993, was taken on a tour by Christine Barber, Director of Therapy Services, and spent time observing therapists at work and chatting with children and their parents.



The Duchess of Gloucester met children, staff and parents at the Bobath Centre.. Photo courtesy Bobath Centre

She was later presented with a posy of flowers by Madison Haynes, aged seven, from Leigh-on-Sea, on behalf of the Centre. The Duchess last visited the Centre in 1993, when she attended the official opening of the charity's new premises after their move from Swiss

Cottage.

"We were delighted to welcome the Duchess to the Bobath Centre once again," said Jayne Pearce, Director of Administrative Services at the Centre. "Her Royal Highness has been a keen supporter so it was wonderful to be able to update her on our progress. We are proud to have her as our patron and hope she will visit again soon."

To find out more about ways you can support the Bobath Centre, visit [www.bobath.org.uk](http://www.bobath.org.uk) or call the Fundraising Department on 020 8444 3355.

## Startled by a rare visitor

By Sue Corson

Out of the corner of my eye, I caught sight of a grey-black flash darting from the fence to the ground in my garden in Market Place. I can readily recognise most of my feathered visitors but this was not something I had seen before.

I suspected that he might be quite a rare visitor so, while he happily fed on the ground under the suet balls, I consulted my bird bible and, sure enough, I found that I had a black redstart in the garden.

He has been coming back to feed daily since the end of January despite the resident robin's best efforts to deter him. I have my heart in my mouth as I watch the local cats stalking him as he sits openly on the fence, bobbing up and down as if to tease them and flying off when they get too close.

So far, he has not been joined by any female friends but I am optimistic that one might turn up, as a pair of blackcaps, another migrant bird, have also been seen in the garden in the past few weeks and the male has been singing beautifully. Who would have thought that in such a busy urban area we would be treated to such delights?



## Old Barn should be 'open to everyone'

By John Lawrence

People of all ages joined in a street party to call for the Old Barn Community Centre to be open for everyone to use. The next stage in the campaign is to sign up active members who could help run the building on Tarling Road.

We've reported in previous issues that there was a change of management at the Old Barn last year. Subsequently, an after-school club was shut, many community groups moved out and the centre is now used mainly for a religious service on Sundays.

### Step forward

Campaigners are asking all parents whose children attended the after-school club until June 2010 to come forward. They believe there may be the basis for a legal challenge if it can be proved there was no advance warning of the club's closure.

They also want volunteers to sign up to show Barnet Council that local people are prepared to help run the centre.

### Ideas for the future

Dozens turned out to the street party on 13 March to enjoy music, food, face painting and fitness activities, all provided free. But it was no celebration. There was a feeling of anger that the community had effectively been shut out. "Childcare", "a youth club", "sports clubs" and "job training" were some of the ideas for how the centre could be used.

Pauline Moran, who worked at the Old Barn for 22 years until last year, said: "It should go back into the hands of a proper community organisation to be run as it was in the past. Without it, the young people round here have very little to do."

Will Hudson, who heads the Old Barn Action Group, said Muslim, Christian and non-religious groups alike wanted the centre to be open to all. "This was an active centre for more than 20 years," he said. "Now when people ask what's going on at the Old Barn, the answer is not a lot."

To contact the action group, telephone 07870 647284, email [endofstrife@hotmail.co.uk](mailto:endofstrife@hotmail.co.uk) or visit its Facebook page.

How do you think the Old Barn should be used? Write to us at [the-archer.co.uk](http://the-archer.co.uk) or The Archer, PO Box 3699, London N2 8JA.

## STEWART DUNCAN

OPTICIANS, SINCE 1962

- EYE EXAMINATIONS
- DESIGNER EYEWEAR
- CONTACT LENSES
- LATE NIGHT
- DYSLEXIA CLINIC
- DVLA APPROVED
- OLD FASHIONED SERVICE

020 8883-2020  
126 HIGH ROAD, EAST FINCHLEY



ACTIVE CHIROPRACTIC HEALTHCARE CLINIC

**"I'M IN PAIN"**  
CAN CHIROPRACTIC HELP ME?

We are often asked "What's the best way of finding out whether a Doctor of Chiropractic can help my problem?" We believe the answer can be found in a complete Consultation and Examination, including X-rays, if appropriate. Procedures that at our clinic normally cost £100 or more.

For a limited period we will complete a full Consultation Examination, X-rays (if necessary) and a full Report of our Findings - All for £20.

**OFFER PRICE £20**  
Expiry date 15th April 2011

YOUR INITIAL VISIT WILL INCLUDE:

- ✓ A private consultation
- ✓ X-rays, if necessary
- ✓ A thorough spinal examination including orthopaedic and neurological tests
- ✓ A confidential report of our findings
- ✓ An explanation of our treatment procedures if we determine Chiropractic care can help you
- ✓ A referral to the appropriate specialist if we determine Chiropractic care cannot help you

To make the most of this limited time special offer call us TODAY on:

**020 8444 0666**  
[www.activechiropractic.org.uk](http://www.activechiropractic.org.uk)  
98 High Road East Finchley London N2 9EB

## SECUREBASE

DOMESTIC COMMERCIAL INDUSTRIAL SECURITY

Est 1988

CCTV  
Access Control  
Intercom Systems  
Intruder Alarms  
Locks Doors  
Safes Grilles



WHY NOT HAVE  
A FREE ALARM SURVEY

+ EMERGENCY  
LOCKSMITHS



**020 8442 0660**

112 High Rd • East Finchley • London N2

[www.securebase.co.uk](http://www.securebase.co.uk)