

**JEREMY LEAF & CO.**

Professional Sales & Lettings  
AT COMPETITIVE RATES  
020 8444 5222  
eastfinchley@jeremyleaf.co.uk

Local News is our Aim

# THE ARCHER



**GLH**  
020 8883 5000  
CARS & COURIERS

February 2010 No. 196  
ISSN 1361-3952

**20p**  
where sold

*A community newspaper for East Finchley run entirely by volunteers.*



Flames rage in the house in Trinity Road. Photo by Duncan Phillips

## Kitchen fire spreads rapidly

By Janet Maitland

A kitchen fire that got badly out of hand has damaged a house in Trinity Road. The owner discovered smoke coming from his kitchen late in the evening

of 7 January. Despite his efforts to put the fire out, it spread extremely quickly and he had to escape the building.

The fire service was called

just after 10pm. Four fire engines and crews were sent from four North London fire stations. By the time they arrived, the flames had already leapt across the ground floor, up to the first floor, and onto the roof.

The street was engulfed in thick black smoke as fire fighters fought the blaze and tried to stop it spreading to the adjoining house. They managed to get the fire under control by 11pm and no one was hurt. The cause of the fire is not yet known and is under investigation.

*The London Fire Brigade can come to your home and give you free personal fire safety advice about things like unsafe electrical wiring and where best to site smoke alarms. They will also fit a free smoke alarm where needed. If you or someone you know wants a home fire safety visit, ring 08000 28 44 28 or email at [smokealarms@london-fire.gov.uk](mailto:smokealarms@london-fire.gov.uk) You can also contact them via the website at [www.london-fire.gov.uk](http://www.london-fire.gov.uk).*

## Safety and congestion fears spark junction plan

By John Lawrence

Major changes are being proposed for the busy traffic junction between the High Road, Fortis Green and East End Road. Barnet Council says it is responding to safety and congestion concerns at the location used by thousands of vehicles and pedestrians each day.

Under the scheme, the pavement outside Domino's Pizza would be narrowed to give large vehicles more room to turn left from the High Road into Fortis Green, and the Fortis Green pedestrian island would be removed.

Guard rails and bollards that currently line all four corners of the junction would be removed to improve visibility between pedestrians and motorists.

Highways manager Neil Richardson outlined the scheme in a letter hand-delivered to businesses and residents close to the junction on 25 January, as *THE ARCHER* went to press. Comments or objections were requested by 8 February.

Mr Richardson said removing the Fortis Green island and removing tactile paving on the two High Road islands would encourage pedestrians to cross in a single movement rather than stopping halfway on narrow refuges where they are at risk from passing vehicles.

Safety concerns were raised in March 2008, amongst other

times, when 93-year-old pedestrian Esther Copperman died after being in collision with a motorcycle as she crossed the junction.

The council's scheme is not yet finalised and no start date or duration have been given for the work. However, disruption for motorists and pedestrians can be expected.

A full list of the proposed changes is as follows:

1. Move the kerb line back at the corner of High Road and Fortis Green.
2. Remove the pedestrian island on Fortis Green.
3. Remove the guard rails on all corners of the junction.
4. Remove the steel bollards and renew existing paving on both sides of Fortis Green.
5. Remove the tactile paving on the two High Road pedestrian islands.
6. Improve the tactile paving at all pavement crossing points.
7. Provide road markings for traffic turning right from East End Road onto the High Road.
8. Relocate drain gullies away from the crossing points to remove any trip hazards.

Address your comments to: Neil Richardson, London Borough of Barnet Environment and Operations, Building 4, North London Business Park, Oakleigh Road South, London N11 1NP.

Tell us what you think of the scheme. Write to *THE ARCHER*, PO Box 3699, London N2 8JA or email [the-archer@lineone.net](mailto:the-archer@lineone.net)

**Prime Locations** .....The Right Choice

Estate Agents - Valuers - Residential Sales - Lettings - Management - Cyprus Properties  
40 High Road East Finchley London N2 9PJ Tel: 020 8883 9090 Fax: 020 8883 8580  
Email: [enquiries@primelocations.co.uk](mailto:enquiries@primelocations.co.uk) Website: [www.primelocations.co.uk](http://www.primelocations.co.uk)

Call us for a Free Valuation. Family Business you can Trust.

Established in the community for over 17 years

**Everything Electrical**

All Domestic Electrical Work Undertaken

10% off All Heaters

Stockist of Draper Tools, DAB Radios, MP3 Players, Freeview Boxes, Kettles, Toasters and Irons

**FREEPHONE: 0800 279 3463**

38 High Road, East Finchley, London N2 9PJ

[loui@everything-electrical.com](mailto:loui@everything-electrical.com) [www.everything-electrical.com](http://www.everything-electrical.com)

**PRICKETT & ELLIS** ESTD 1767

82 High Road East Finchley N2 9PN

**020 8883 0033**

[highroadn2@prickettandellis.com](mailto:highroadn2@prickettandellis.com)

Estate Agents and Valuers. Established 1767

**VICTORY AUTO SERVICES**

**Air-Conditioning - Recharge & Servicing**

Mechanical repairs, tyres, bodywork, clutches, exhausts  
MOTs by appointment

109 Fortis Green East Finchley London N2 9HR  
Tel: 020 8883 9707 / 0023 Fax: 020 8482 9179

• Visit your community newspaper on-line at [www.the-archer.co.uk](http://www.the-archer.co.uk) •





## THE ARCHER

PO Box 3699  
LONDON N2 8JA

WWW.THE-ARCHER.CO.UK

e-mail: THE-ARCHER  
@LINEONE.NET

Voicemail & Fax:  
(messages only)

Editorial/enquiries: -  
**08717 33 44 65**

Advertising/finance: -  
**08717 33 45 28**

PUBLISHED BY  
*East Finchley  
Newspapers*

CHAIR  
*Kevin Finn*

COPY EDITOR  
*John Lawrence*

EDITORIAL TEAM  
*Diana Cormack  
Daphne Chamberlain*

SUB EDITORS  
*Ann Bronkhorst  
Wendy Devine  
Pam Kent*

PRODUCTION EDITOR  
*Alison Roberts*

PICTURE EDITOR  
*Mike Rubens*

FINANCE &  
ADVERTISING  
*John Dearing*

DISTRIBUTION  
*Toni Morgan  
Anna King  
Pam Kent*

PRINTED BY  
*Sharman & Co Ltd*

*Thank you to The Bald  
Faced Stag for providing  
us with a meeting place.*

*THE ARCHER team wishes  
to thank all the generous  
people who give up their  
spare time, in all weather,  
to deliver the paper for us.*

### Your contributions

If you have a story for us, please  
contact us at the above address.

Comments to THE ARCHER may  
be published unless clearly  
marked 'Not for publication'  
within the text.

### Copy deadlines

March issue: 12 February  
April issue: 12 March  
May issue: 16 April

## USEFUL TELEPHONE NUMBERS

### Councils

**Barnet Council:**  
Admin/Town Hall 020 8359 2000  
Council Tax 020 8359 2608  
Recycling & refuse 020 8359 4600  
Primary Care Trust 020 8201 4700  
Benefits Agency 020 8258 6500  
Employment Service 020 8258 3900  
**Haringey Council** 020 8489 0000

### Leisure

**Alexandra Palace** 020 8365 2121  
**East Finchley Library** 020 8359 3815  
**Muswell Hill Odeon** 0870 505 0007  
**Phoenix Cinema** 020 8444 6789  
**Warner Cinema** 020 8446 9933

### Transport

**Nat. Rail Enquiries** 0845 748 4950  
**City Airport** 020 7646 0088  
**London Transport** 020 7222 1234  
**National Express** 08705 808080  
**Heathrow Airport** 0870 000 0123

### Hospitals

**Barnet General** 0845 111 4000  
**Coppetts Wood** 020 8883 9792  
**Finchley Memorial** 020 8349 7500  
**Oak Lane Clinic** 020 8349 7000  
**Royal Free** 020 7794 0500  
**St Luke's** 020 8219 1800  
**Whittington** 020 7272 3070

### Health Advice

**AIDSline** 020 8363 2141  
**Alcoholics Anonymous** 0845 7697555  
**Barnet MENCAP** 020 8203 6688  
**Cancer Support** 020 8202 2211  
**Carers' Line** 0808 808 7777  
**Drinkline** 0800 917 8282  
**Drugs Helpline** 0800 776600  
**MIND** 020 8343 5700  
**NHS Direct** 0845 4647

### OAP's Advice

**Barnet Age Concern** 020 8346 3511  
**Contact (N2)** 020 8444 1162

Help the Aged 0808 800 6565

### Crime

**Emergency** 999  
**Barnet Police** 020 8200 1212  
**Mus. Hill Police Stn.** 020 8808 1212  
**CrimeStoppers** 0800 555 111  
**Victim Support** 0845 303 0900  
**East Finchley Safer Neighbourhood Team** 020 7161 9014

### Help & Advice

**Childline** 0800 1111  
**Disability Info Service** 020 8446 6935  
**E.F. Advice Service** 020 8444 6265  
**Gingerbread** 020 8445 4227  
**National Debt Line** 0808 808 4000  
**NSPCC** 0800 800 500  
**Rape & Sexual Abuse** 020 8683 3300  
**Relate** 020 8447 8101  
**RSPCA Inspector** 0300 1234 999  
**Samaritans** 08457 909090  
**Refuge Crisis Line** 0870 599 5443

EAST FINCHLEY  
ADVICE SERVICE

42 Church Lane, London N2 8DT.  
Tel/Fax: 020 8444 6265

### General Advice.

Monday to Friday: 10am -  
12.30pm and 1.30pm - 4pm.

### Legal Advice.

Tuesdays: 7pm - 8pm.

### Councillors' Surgery.

Saturdays: 10am - 11.30am

### Community Services

❖ **Credit Union**, Green Man Community Centre 020 8883 4916  
❖ **Careers advice**, Green Man, Community Centre 020 8883 4916  
❖ **Toy library**, Muswell Hill 020 8444 0244/ 8489 8774

## Domestic violence targeted

By Janet Maitland

"Domestic violence is a serious crime and a fundamental abuse of human rights," said Public Protection DCI Mark Roycroft of Barnet police, after six people were arrested in the borough on 26 November. Nine people were arrested in Haringey.

The arrests were part of Operation Athena, now in its ninth year, timed to coincide with White Ribbon Day, the International Day for the Elimination of Violence against Women. All 32 London boroughs took part.

"We aim to transfer the fear onto the offender," said a spokesperson from the Metropolitan police. "We want to encourage more victims to come forward and report crimes to the police or go a third party reporting site."

### Where to go

East Finchley has a third party reporting site at Victim Support Barnet, The Flat,

Avenue House, East End Road, Finchley N3 3QE (telephone: 020 8343 4435). Victims of crimes and incidents related to racism, domestic violence, sexual offences, homophobia, faith and disability can go there if they are too frightened to go to a police station.

The National Domestic Violence Helpline (0808 2000 247) provides confidential support to women and children experiencing domestic violence, including access to a place of safety in a refuge. Calls are free and interpreters are available for non-English speaking callers.

## Planning Applications

### Barnet Council

#### 14 Abbots Gardens, N2

Single storey rear extension following demolition of rear conservatory. Roof extension including extension to ridge line to facilitate loft conversion.

#### 39 Bancroft Avenue, N2

Ground floor rear extension following demolition of rear conservatory. Roof extension involving one rear and two side dormer windows to facilitate loft conversion. Addition of three new first floor bay windows on rear elevation.

Enclosure to rear balcony and internal layout alterations.

#### 15 Bedford Road, N2

Erection of side/rear conservatory

#### 31 Brim Hill, N2

Changes to openings to side and rear elevations. Roof lights to flat and sloping roofs. Conversion of garage into habitable room including associated external and internal works.

#### 215 Creighton Avenue, N2

Retention of single storey detached building in the rear garden.

#### 10 Durham Road, N2

Single storey rear extension.

#### 180 East End Road, N2

Conversion of garage into a habitable room including insertion of window.

#### Nanas Villa, 34 The Bishops Avenue, N2

New basement roof lights, patio and associated hard and soft landscaping to rear garden. Alterations to rear door side panels.

#### Flat 6, Maple Court, 49A The Bishops Avenue, N2

Provision of a timber pergola positioned to the side of the extension.

### Haringey Council

#### 10A Annington Road, N2

Demolition of existing single storey garage workshop and erection of new two-storey building to provide two two-bed flats.

#### 5 Fortis Green Cottages, Fortis Green, N2

Erection of two-storey side extension.

#### Bomarsund, Fortis Green, N2

Raising of front wall to 2,100mm and installation of entrance gates.

## Burglary is top priority for police

Burglary is the number one priority for crime fighting in Barnet, said Borough Commander Chief Superintendent Neil Basu in his New Year message.

"Our current challenge is burglary and I foresee that this challenge will follow us into 2010," he said. "Please be assured that burglary is my number one priority and we are all working hard to target the individuals who are committing crime."

"We are also dedicated to helping the residents of Barnet make their homes more secure. I would ask you all to remain vigilant and report suspicious or criminal activity to the police immediately."

Chief Supt Basu said the

Metropolitan Police Service had seen tremendous changes this year with the appointment of the new Commissioner Sir Paul Stephenson and the introduction of the policing pledge which sets out new standards of customer service.

He urged people who live and work in Barnet to get to know the local police officers in their Safer Neighbourhood Teams and to raise community issues with them. In return, officers will be better placed to offer advice and support and to improve the quality of the policing service.

## OSTEOPATHY at

## The Twyford Practice

*Osteopathic consultation and treatments  
in Fortis Green, N2.*

**Robin Kiashek,**  
**Osteopath and Naturopath,**  
**Bsc (Hons), Ost Med.,**  
**N.D., M.R.N.**

For appointments:  
please phone **020 8815 0979**  
or visit:

**www.robinkiashek.co.uk**  
for further information



## T'ai Chi & Qigong

**Wednesdays: 1.05-2.00pm**

(Trial session: £5)

at East Finchley Methodist Church, 197 High Road, N2 8AJ.

James Drewe is a qualified teacher and has been practising t'ai chi for 34 years.  
He is Vice-Chairman of the Longfai Taijiquan Association

Other classes (Tottenham Ct. Rd., Westminster, The City): **www.taiji.co.uk**

email: **james@taiji.co.uk** phone: **020-888 333 08**





## Threat to Whittington Hospital A&E

By David Melsome

Concern is growing that Whittington Hospital's accident and emergency department could be closed as part of a huge reorganisation of NHS hospital services in north London. A campaign is underway to save the casualty unit.

Around 240 people use the Whittington A&E every day. Campaigners against the closure say it is not feasible to send those patients to the already-busy Royal Free Hospital in Hampstead or University College Hospital in Euston.

### Local impact

For East Finchley residents, any loss of casualty services at the Whittington would leave them with a choice of travelling to Barnet Hospital or the Royal Free. Claims that Barnet Hospital might also lose its A&E department have been denied.

Worried readers have contacted *THE ARCHER* to express their concerns. Geoffrey Ferris said: "A neighbour who works there told me that they were proposing to amalgamate Whittington with the Royal Free. This clearly indicates that other valuable services will also be transferred, again

disadvantaging patients who live in Muswell Hill and East Finchley."

### Leaked memo

The reorganisation plans came to light in a leaked memo from Rachel Tyndall, chief executive for North London NHS. It set out several options, including the downgrading of the Whittington to 'local hospital' status, involving the closure of its A&E and other changes. Ms Tyndall told a public meeting in December that the service needed to save money. Full consultation on the plans is due to start in the autumn.

MPs and patient groups across Haringey and Islington have started a campaign to halt the proposal. Hornsey and Wood Green MP Lynne Featherstone has an online petition at <http://bit.ly/SaveOurAandE> and Islington MP Jeremy Corbyn has an online petition at [www.savethewhittington.org.uk](http://www.savethewhittington.org.uk).

## Allotment fight goes on

By Sheila Armstrong

Campaigners at Fortis Green Allotments have persuaded landowners Thames Water to sell part of the land to them for £30,000. This is the part of the site that includes the allotments but does not include the adjoining copse.

The Fortis Green Allotments Trust wanted to buy the entire site but the water company surprised negotiators by withdrawing the copse land from sale.

"It's a great step forward, only possible because of the commitment of our supporters," said Trust spokesman Rupert Lancaster. "But it still leaves us with two big tasks on our hands: raising the money by 31 March this year and securing the long-term future of the copse which forms the remainder of this beautiful site."

The Trust was created to save the allotments when Thames Water announced its intention to sell the land last summer for building development.

### Help needed

"Even though Thames Water tell us they have no plans to develop the copse 'for the foreseeable future', we remain concerned," said Rupert. "As soon as we are confident the allotment land is secure we will turn our efforts towards ensuring

that the copse - a vital part of the local eco-system - is also safe in perpetuity."

Anyone wanting to support the campaign, donate money or help with fundraising should go to its website at [www.savefortisgreenallotments.com](http://www.savefortisgreenallotments.com).

## Lazooli closes

Retro, vintage and new fashion store Lazooli closed its doors on 31 January after four years of business.

Owner Gaynor Spry said: "Sadly, the recession has finally taken its toll. I would like to take this opportunity to thank every single one of you who has been a regular customer for your support over the last four years. It has been great fun getting to know you all and I do hope we will bump into each other in the High Road."

## Man dies after fire at sheltered housing

By Janet Maitland

A man has died after being taken to hospital suffering from smoke inhalation and burns when a fire broke out on 19 December in a flat in Paul Byrne House in Helen Close. The fire started at about 8.30am in a ground floor flat of the sheltered housing scheme managed by Servite Houses.

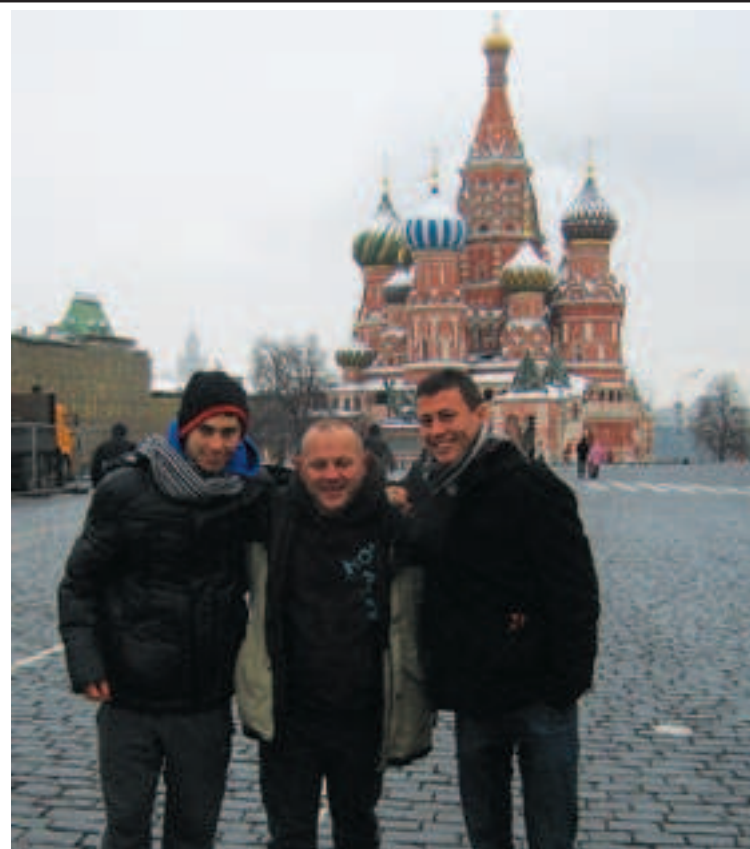
Four fire engines arrived shortly afterwards to tackle the blaze but they had difficulty gaining access to Paul Byrne House because of the snow in Helen Close. Parked cars along this narrow street added to the problem. There were also icy conditions on Thomas More Way, the access road to Helen Close.

Janice Wagner, who lives nearby, said: "All the emergency services were just brilliant, but even the ambulances couldn't get near. When the fire fighters got the injured man out, he had to be carried to East End Road to get to one."

The residents were evacuated from the building and taken in police vans to the Carmelite Friars on East End Road, who provided them with temporary refuge. Everyone was able to return later the same day, with the help of neighbours, who were asked to lend a hand by the Servite Houses scheme manager.

The man who was rescued died later in hospital. "The cause of death has not been released," said a spokesperson from Servite. "An inquest is being carried out."

At the time of going to press, Servite was awaiting a report on the cause of the blaze from the Fire and Safety Service. The police have confirmed that there were no suspicious circumstances.



To Russia with gloves: Charlie, left, Mr Wilkes and Fred brave the cold in Moscow.

## Metro boys do Moscow

By John Lawrence

They conquered London, they trounced Paris and now they've triumphed over Moscow. School friends Fred Isaac and Charlie Gould have visited all 177 stations on the Moscow Metro system in just 13 hours.

Fred, of Huntingdon Road, Charlie and Andrew Wilkes, their teacher from University College School, Hampstead, covered the 292km network, famous for its art deco platforms and foyers, stopping at each station on the way.

All the money raised from their journey is going to support the Parkinson's disease society, along with their school's partner college in Uganda and a Romanian orphanage. So far they've raised nearly £3,000 but their target is £4,000.

### Freezing conditions

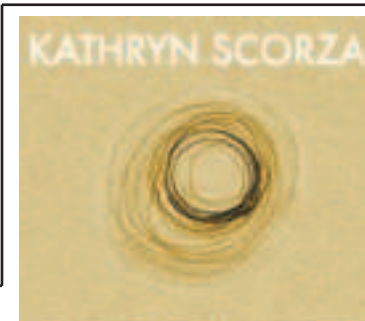
Two years ago, Fred and Charlie covered the London Underground and a year ago they visited every station in Paris. But Moscow was a very different challenge. For one thing, temperatures in December were -10C.

Fred said: "It was extremely cold. The Moscow system fans out in all directions so we got to

the end of each line and had to catch a taxi over to the start of the next. The stations are beautiful and the system is busy but very efficient. Seven million people use it every day."

Friends in Russia helped them find a bodyguard and a translator to accompany them throughout the day in case they were challenged by the police. In the end, they weren't.

You can still help Fred and Charlie get closer to their fundraising total. Visit [www.justgiving.com/Fred-Isaac](http://www.justgiving.com/Fred-Isaac) to make a donation and support their good causes.



### HYPNOTHERAPY SPIRITUAL HEALING

Kathryn Scorza  
Registered Hypnotherapist  
Soul Therapist  
and Spiritual Healer

Contact me for more information or to make an appointment

07703 404 839  
[kathryn@kathrynskorza.co.uk](mailto:kathryn@kathrynskorza.co.uk)  
[www.kathrynskorza.co.uk](http://www.kathrynskorza.co.uk)

Hypnotherapy offered for a wide range of issues including only weight loss and smoking cessation

## Nicky Sharp Osteopathy Clinic

Cranial and Structural Osteopathy  
and Acupuncture  
All Major Insurers Accepted

For consultations and appointments:

Telephone: 020 8815 9433

260 East End Road [www.nickysharposteopathy.co.uk](http://www.nickysharposteopathy.co.uk)  
London N2 8AU e-mail: [info@nickysharposteopathy.co.uk](mailto:info@nickysharposteopathy.co.uk)

Have you ever had a problem finding a reliable Electrician?  
Domestic Re-wiring • Fault Finding • Safety Inspections  
FREE Site Surveys • No Job Too Small

We turn up on time, guarantee our work and are unbeatable value  
Call us now!  
East Finchley Electrical  
0208 883 9098  
115 High Rd, East Finchley, London N2 8AG  
[www.ef-elec.co.uk](http://www.ef-elec.co.uk)

♥ Josephines ♥  
EXPERTS IN CREATIVE FLORAL DESIGN  
Whether it's flowers, a bottle of champagne or even just a box of chocolates, what better way of saying 'I Love You!' this **Valentines Day** (Sunday 14th February).  
Place your **Orders Now** to avoid disappointment,  
Love to all xx  
[www.josephinesflowers.co.uk](http://www.josephinesflowers.co.uk) Tel: 020 8444 9569/020 8883 3598 60 High Rd, East Finchley, London N2 9PN





## More play facilities for older children

By Diana Cormack

The new play area for older children in Cherry Tree Wood (see *THE ARCHER*, November 2009) should be open by April. It is to be installed adjacent to the current play park, on the open grassland. An artist's impression of the proposed equipment can be seen at [www.barnet.gov.uk/playbuilder-consultation](http://www.barnet.gov.uk/playbuilder-consultation).

Residents can also use this website to leave comments and suggestions about the borough's 11 play areas proposed for 2010, funded through the Department for Children, Schools and Families' Playbuilder Initiative.

### Local consultation

Barnet had to move quickly with online consultations in order to meet the Government's timetable for implementation, thus ensuring £1.1 million funding. As well as putting notices on the park railings before Christmas encouraging local parents and children to respond, East Finchley schools and youth

groups were consulted. Barnet Council told *THE ARCHER* that questionnaires were completed between September and December at Holy Trinity Primary and Bishop Douglass Secondary Schools. Both these schools, along with Martin Primary and the Monday Youth Club, attended an event to give their views.

The Friends of Cherry Tree Wood have provided feedback on the design proposals. While supporting the need to provide play facilities for older children, some are concerned about the site and any effects there might be on the ancient woodland.

"The design of the play area is very much in keeping with the natural setting," says the Council. "Natural elements such as logs, boulders and grass mounds have been incorporated into the design with any safety surfacing comprising of either grass or bark chipping."

The play areas are aimed at 8-13 year olds, who have less access to play areas than younger children, and are designed to allow youngsters of all abilities to play together without boundaries.

## Fraudsters use police logo in lottery scam

By Janet Maitland

Police have issued a warning that fraudsters have added the logo of the Metropolitan Police to an internet lottery scam.

The fraudsters have taken the official logo and page header used by the Metropolitan Police Service on its Fraud Alert website and added them to a lottery scam that asks for payment in advance. They have also added an email link to draw potential victims further into the scam.

Police have warned people that, although the 'alerts@metropolitan-police.co.uk' address looks like a legitimate police internet link, it isn't. The only email addresses used by the police use one of two formats: either Name@met.police.uk or Name@met.pnn.police.uk. Any other email address means it is a fraud.

If you want to confirm the identity of a police employee, call the Scotland Yard switchboard on 020 7230 1212 and ask to be put through to the relevant person.

## Seeking will

Solicitors are trying to trace relatives or friends of the late Fay Witriol, of Summerlee Avenue, N2.

Shedied on 19 October 2009 and the legal firm would like to make contact with anyone knowing of a will. Contact Statham Gill Davies at 54 Welbeck Street, London W1G 9XS or on 020 7317 3210.

A friendly welcome awaits you

### EAST FINCHLEY METHODIST CHURCH

197 High Road, London N2 (opp. Creighton Ave.)

tel: 0208 346 1700

[www.eastfinchleymethodist.org.uk](http://www.eastfinchleymethodist.org.uk)

**Sunday service at 10.30 a.m.**  
**With Creche and Junior Church**

Worship Music Social events Toddler Group Wheelchair friendly  
e-mail: [info@eastfinchleymethodist.org.uk](mailto:info@eastfinchleymethodist.org.uk) Room hire tel: 020 8444 9887

## Mobile networks exploit planning catch 22

As residents of Viceroy Close, above Budgens, learn that they may be getting yet another mobile phone mast above their homes, John Dearing investigates the planning system that is creating such 'mast farms'.

A mobile telephone network wishing to install an aerial system need not apply for planning permission provided the building is not listed or in a conservation area, the equipment does not exceed a height of 15 metres, and the system is the first or second on that site.

If tenants or leaseholders object, the only way they can stop an installation is to persuade their landlord to change his mind. When, as is often the case, the freeholder lives elsewhere, and stands to receive a substantial windfall rent from the mobile operator, the chances of this happening are remote.

### Mast farms

The legislation requires that plans for a third system intended for a given site be submitted as a full planning application. However, at relevant appeals, the planning inspectorate has ruled that the unsightly nature of further masts on a building already hosting one or more is not a basis for refusing the application. Indeed, the Mayor of London's policy is to encourage clustering onto as few buildings as possible, in so-called 'mast farms'.

In a further twist, it appears

that there is nothing to stop the first or second systems being extended with further masts. If the network operators then wish to sub-let these new masts to a third (or fourth or fifth) operator, no permission to install them is required as they fall under the aegis of the original systems.

### Objectors powerless

The only basis for objecting to a new system is the appearance or location of base stations, and, sadly, it is all too easy to find a dark corner in which to hide them.

In other words, it is virtually impossible for unwilling residents to prevent the proliferation of mobile phone masts on their buildings, once the network operators have decided to set up a mast farm on their roof. Those who are inclined to look upwards from time to time will soon see the result of this, right in the centre of East Finchley.

## Not too late for ARCHER calendar

It may be February already, but *THE ARCHER* Calendar 2010 is still on sale. Don't miss your chance to own 12 superb photographs of life in East Finchley to enjoy all year round. Every calendar raises £5 for the Bobath Centre for Children with Cerebral Palsy in East End Road, which provides therapy, treatment and emotional support for families affected by this debilitating condition.

Look out for *ARCHER* Calendar 2010 posters in shop windows in the High Road. Or turn to page 11 and use our form to order by post. Send us your name and address, along with payment, and the calendar will be delivered straight to your door. Delivery is free.

## East Finchley Baptist Church

Just off the High Road in Creighton Avenue N2

**Sunday Mornings at 10.30 am**

For more information  
please contact the Church Office  
Tel: 8883 1544 (Minister: Simon Dyke)

**Visitors always welcome**



east finchley  
**smiles**  
expert general & cosmetic dentistry

**NHS CHECK-UPS £16.50**  
(this includes x-rays where necessary)

**NHS EXEMPT PATIENTS AND CHILDREN UNDER 18 ARE FREE**

**new NHS list now open**

member of the  
BDA and the BDHF



smile with confidence

**020 8444 3436**

144 The High Road, East Finchley, London N2 9ED  
[www.eastfinchleymethodist.org.uk](http://www.eastfinchleymethodist.org.uk)





## Man saved from hypothermia

By Janet Maitland

An 89-year-old man suffering from hypothermia was taken to hospital after he was discovered by a community support officer from the East Finchley Safer Neighbourhood Team. The elderly man was found by Jan Lovell on 7 January while she was doing a check on Leopold Road as part of Project Shield, which keeps an eye on vulnerable local residents.

"When I visited the resident at 1pm, he was feeling very poorly and the house was very cold - only 6°C," said Jan. "He had been in bed when I knocked and hadn't had any food or drink that day. I dressed him, got some heat on and asked a neighbour to heat up some soup which he ate while we waited for the ambulance."

According to the London Ambulance Service, the man would have died had he not been found as his body temperature was so low. It was still 34°C an hour after he was found. The man was still in the Royal Free Hospital a week later being treated for hypothermia and an infection.

### Notice vulnerable neighbours

"I know people are concerned about the cost of heating, but little things can save your life, such as properly heating your most used room,

wrapping up in several layers, and having regular hot drinks," said team Sergeant Andy Matthews. "Please spare a thought for anyone you know who is vulnerable and check on them every so often to make sure they're ok."

"This case is proof that Project Shield is a great thing," said a spokesperson from the Metropolitan Police. "If people are elderly, vulnerable or lacking a support network, Safer Neighbourhood Team officers can often help them be a bit safer and hopefully a lot happier."

*If you want to refer anyone who is vulnerable, for any reason, to Project Shield, contact the Safer Neighbourhood Team on 020 7161 9014 or 07887 632767 or email them at EastFinchley.snt@met.police.uk. You can also talk to the Police Community Support Officers (PCSOs) you see on patrol.*



Archie shivers in his coat of snow. Photo by Mark Blair.

## Walking to work on a winter's morning

Dennis Evans, of Helen Close, sent us his poem about walking alongside the Brent River in the days before the Brent Cross Shopping Centre was built.

The Brent has iced over,  
bent in its purpose of not moving.  
The birds have stopped singing,  
grass and leaves are frost-encrusted.

Pink-faced girls walk by, smiling.  
And hunched office workers,  
with hands deep in pockets  
and steamy breath,  
hurry from the bus stop.

### Greene Driving School

East Finchley N2

From **£17.50** x 2 Hr lessons

**Safe driving for life**

**Low Co2 footprint 114**

**Eco & Low Maint Tuition**

**Pass Plus 4 cheaper**

**Insurance. Greenedriving.co.uk**

Call **John M.I.M.I**

**0773 851 4406**

## To push or not to push

By Betti Blatman

And do you remember our first round of snow back in late December?

On that occasion, as ice and snow gripped the area, two East Finchley residents struggled to get home on the 143 bus from Archway. They told us that the driver had had difficulty starting the bus up the hill towards Highgate and had asked passengers to help push it! When nobody responded, he requested that everyone leave the bus. So our passengers had to find a café to keep warm before walking on to the Esso garage on the Great North Road, where they were finally picked up by car.

## A helping hand

Mrs Violet Hooper, of Prospect Ring, contacted *THE ARCHER* to express her thanks to members of East Finchley's Safer Neighbourhood Team.

Violet, who is 81, told us that two community support officers had called at her flat to check on her welfare. Not only did they ensure she was all right but the young male and female officers also did her shopping. "I hadn't been out for two weeks and it really made my day," said Violet. "They helped out my neighbour, too."

## Pothole purge

Following January's sub-zero temperatures, Barnet council highway teams are preparing for a rise in the number of potholes in the borough over the coming months.

Barnet residents can now report potholes to the council via a dedicated online site <http://barnet.fixmystreet.com>. Residents can upload details and images of potholes and other issues they would like to see tackled in their neighbourhood and send them straight to the council. The free site is also linked from the council's homepage [www.barnet.gov.uk](http://www.barnet.gov.uk).

## Wood opening hours

As of 1 December, Cherry Tree Wood is opened at 8am and closed at 4.30pm.

### Cree Godfrey Wood Solicitors

Commissioners for Oaths

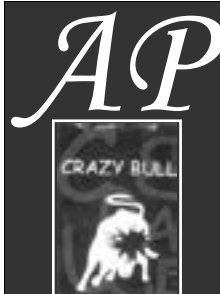
Hours: 9.30am to 5.30pm.

email: [admin@creegodfreyandwood.co.uk](mailto:admin@creegodfreyandwood.co.uk)

28 High Road, London N2 9PJ

Tel: 020 8883 9414 / 9496 / 0989

[www.creegodfreyandwood.co.uk](http://www.creegodfreyandwood.co.uk)



Exclusive in the UK to:  
**AP Gentlemens Barbers**  
**CRAZY BULL Hair Products**

"You deserve the right  
to have beautiful & stylish hair every day"  
50 High Road, East Finchley, London N2 9PJ  
t: 0208 815 5557



Postman Bob Konig. Photo by Bill Richardson.

## The mail must get through

The heavy snow didn't stop postie Bob Konig completing his round in the Baronsmere Road area. Bob joined the postal service in East Finchley in 1969 and has been delivering on the same round since 1984. Bob remembers the harsh winter of 1963: he was a paperboy in Highgate at the time and had to wade through snow up to his knees. Thanks to Bob and all his Royal Mail colleagues who kept collections and deliveries going strong through the snow.

## GEMINI PHOTOGRAPHIC Camera sales and repair centre

**Set of 6 ID or Passport photos: adults and children @ £3.99 babies @ £5.00**  
**Telescope sale now on plus special offers on selected items, come in and see!**  
**Used cameras purchased and sold.**  
**Repair problem? See the technician for an estimate, Fri/Sat 10.30~6.00**

58 High Road, East Finchley, N2 9PN. 020 8883 6152.



Wendy Longworth & Associates physiotherapy practice offers a variety of treatments at the clinic, or off-site, in patients homes, nursing homes, private hospitals and other organisations.

- Back Pain
- Neck Pain
- Whiplash Injury
- Sciatica
- Sports Injury
- Frozen Shoulder
- Arthritis
- Tennis Elbow
- Sprain or Strain
- Rehabilitation
- Neurological
- Stroke

[www.eastfinchleyclinic.co.uk](http://www.eastfinchleyclinic.co.uk)

East Finchley Clinic  
2-3 Bedford Mews  
Bedford Road  
London N2 9DF

**020 8883 5888**  
FAX: 020 8444 8874

## Finchley Carpet Cleaner

- Professional Carpet Cleaning
- Oriental Rug Cleaning
- Stain Removal

*Competitive Prices*



- Also We Do Removals

Tel: 020 8815 9508

Mob: 07930177510

### Do you suffer with bowel problems?

Cecilia Holmes R.G.N. R.C.T. is a trained nurse and colonic therapist. She can help.

Colonic Hydrotherapy treatments help with I.B.S. Constipation, headaches and candida problems. After a colonic you will have better energy levels.

Alternatively home visits are available to administer herbal enemas and massage, a gentler, but longer route to cleansing the bowel, but just as effective.

email: [colonicssc@yahoo.co.nz](mailto:colonicssc@yahoo.co.nz)

tel: 07533 750 400 or 020 8444 8702





## Design down to a tee

By Jessica Tully

While the current recession has made job hunting difficult, Gabriella Gambetta and three friends have found a way to combine what they love doing and earn money at the same time.

A recent fashion graduate at Hertfordshire University, Gabriella, along with Sabah Noor, Vivienne Lew and Indi Yapa, launched online fashion company, 4.2morrow, designing and selling clothes for women.

Their first collection included a range of T-shirts inspired by rock music, with 10% of the profits going to The Samaritans, a cause all four friends strongly support. Since its launch last June, 4.2morrow has received great feedback and now has a number of fashion shows lined up, including an appearance at London Alternative Fashion Week to be held in Spitalfields Market in April.

Gabriella, 22, who lives in N2, told *THE ARCHER*: "We found it a real struggle to get jobs in the recession but tried to see it positively and decided to design our own range of clothing and sell the pieces online."

"Since we started last summer we have been very busy designing and making the pieces. It's great to be doing something I have always wanted to do and things are really picking up, with our latest collection due out in February."

After their early success, website [www.four2morrow.com](http://www.four2morrow.com)



A sample of 4.2morrow's stunning designs.

is in development and the friends hope to start selling some items in shops and boutiques and already have their own stall at Camden Market. They can be contacted on 0208 444 8184 or [four.2morrow@hotmail.com](mailto:four.2morrow@hotmail.com) and are on Facebook as 4.2morrow.

## Alzheimer's Society needs help

If you're clearing out your clutter or thinking of binning your bling, there may be something you could send to the Alzheimer's Society. "If you can't repair it or you never wear it, share it" is the current slogan accompanying their appeal for unwanted jewellery.

The Society is asking for items you never wear, broken or single items left from a pair such as earrings or cufflinks and any gold, silver or costume jewellery. These will be recycled to raise much-needed money to support people with dementia, their families and carers.

The charity will supply Freepost padded envelopes if you call 0845 306 0898 or visit [www.alzheimers.org.uk/jiffy](http://www.alzheimers.org.uk/jiffy). Alternatively, you can send your jewellery directly to: Freepost RRUL-HZKT-YHKG, Alzheimer's Society, London E1W 1LB. Please include your name and address so your donation can be recorded and acknowledged.



## Pedal power at The Manor

By Diana Cormack

Members of The Manor Health and Leisure Club on Fortis Green took part in a sponsored indoor cycle ride at the end of last year. It was organised by instructor Marta Sterbakova in aid of the North London Hospice and raised a magnificent total of £1,170.

## Noah's Ark seeks volunteers

Noah's Ark Children's Hospice in north London provides care for life-limited children and their families in their own homes. It is always keen to attract new volunteers to its Family Support Volunteer Programme, which matches trained volunteers to individual families to improve their quality of life.

Families regularly say that some types of help are not available from statutory or other voluntary service providers. Examples of these unmet needs include practical help around the house, escorts to hospital appointments, support with siblings (play and homework) and parental emotional support in the form of a

friendly ear.

Volunteer training covers essentials such as communication, reliability, confidentiality and child protection. The boundaries of the volunteer role are emphasised because these are crucial in protecting both parties in the family/volunteer relationship. In addition, volunteers have the opportunity to meet some families, so gaining a more realistic understanding of the challenges faced day-to-day and allaying their fears that the focus is always on death and dying.

After qualifying, each volunteer is matched to a specific family, ensuring the strengths of the volunteer meet the family's expectations. Helped by funding from Children in Need, the hospice now has 48 trained volunteers. Feedback from both families and volunteers is consistently positive and demonstrates a powerful impact made on families. To find out more about the Family Support Volunteer Programme, please contact Family Support Volunteer manager Polly Hind on 020 8449 8877 or [phind@noahsarkhospice.org.uk](mailto:phind@noahsarkhospice.org.uk).

## Open day for Mandana

Beauty therapist Mandana will be holding an open day on Saturday 20 February with an auction in aid of the Bobath Centre for Children with Cerebral Palsy, based in East End Road.

There will be demonstrations of anti-wrinkle facial treatments at 11am and 2pm and a 15% discount for facials on the day, with the auction at 1pm. Mandana is based at Jennie Mann in Church Lane, N2. For more details, telephone 020 8365 2284.

**EAST FINCHLEY SCHOOL OF ENGLISH**

- Flexible course days and times
- Courses in General English & Exam Preparation
- Small classes with a good nationality mix

\* This voucher cannot be exchanged for cash & ONLY one voucher can be used per person. Kindly contact the school beforehand to pre-book trial lesson.

Accredited by the  
**BRITISH COUNCIL** **ENGLISHUK** member

**FREE TRIAL LESSON**  
upon presentation of this voucher

[www.efse.co.uk](http://www.efse.co.uk)

Southern House, 1a Bedford Road, East Finchley, London, N2 9DB  
t: +44 (0)20 8983 8567 f: +44 (0)20 8983 8567 e: [marketing@eastfinchleyschool.co.uk](mailto:marketing@eastfinchleyschool.co.uk)

## Girl about East Finchley

### Manners maketh the man

By Fay Sanders

I was determined not to arrive late to work. "The next train to Kennington via Charing Cross will arrive in one minute," drifted within earshot as I strode purposefully down the pathway to East Finchley tube station. Plodding commuters politely stepped to one side at the quickening click of my heels behind them.

I raced past the ticket barrier, Oyster card at the ready as the train arrived at the platform. The doors opened as I sprang up the stairway. I had timed my dash perfectly; or so I thought. A young woman was standing slap bang in front of the nearest train door. If I'd shoved her out of the way I'd have made it on board. Instead I hissed, "Excuse me, can you move, please?" and she turned to glare icily at me as the doors slammed shut in my face.

#### Push comes to shove

The dozy door-blocker stepped onto the subsequent train via Bank and I hoped I'd get a seat on the next Charing Cross train. A tall woman in her mid-20s appeared at my left on the platform and then a man, possibly in his late 30s, positioned himself to my right. The train stopped with the nearest door between me and the tall lady, who moved to get in the carriage first. I felt my indignation mounting but before I could react, the man to my right pushed us both out of the way and barged onto the train, plumping himself down on the last available seat.

#### Sisters in adversity

As we stared at each other in disbelief, the barger became aware of our discontent. "So much for ladies first," muttered the tall lady in an Eastern European accent. "Oh, are you pregnant then?" the barger cried out, loudly enough for the whole carriage to hear. The woman looked too flabbergasted to speak. "No, she hardly looks pregnant," I spat out, "but you pushed past both of us to get the last remaining seat."

I felt more than one pair of eyes focused in our direction. Before the barger could reply, an older lady in her 50s piped up: "I don't know who was there first but you certainly seemed in rather a hurry to get that seat. And since I'm older than all of you, I think I deserve to take your place." With that, the barger was silenced, and the tall lady and I smiled smugly at each other as he sulkily relinquished his cherished seat.



Burts Bees  
Korres  
Origia  
VVP Bags  
Tea Forte  
LSA  
True Grace

Elegant and inspired gifts for all occasions

the  
cherry  
tree

172, High Road, East Finchley N2 9AS

Tel: 020 8883 4369

[info@thecherrytreeuk.co.uk](mailto:info@thecherrytreeuk.co.uk) [www.thecherrytreeuk.co.uk](http://www.thecherrytreeuk.co.uk)





# New fence and new fox at Long Lane Pasture

**The Friends of Long Lane Pasture are reporting great progress on a number of major projects and the arrival of even more wildlife.**

Firstly, the dilapidated footpath fence alongside the pasture has been replaced with a new 100-metre fence, which is strong and secure and provides a second gate onto the pasture at the railway bridge end. The fence was purchased with the aid of a grant from the City Bridge Trust.

This new gate leads on to an area at the top of the embankment with a splendid view over Finchley and there are plans to provide a vista sign here pointing out local landmarks.

The existing hard-standing path at the Long Lane end of the Pasture has been resurfaced, making it much smoother and easier for pushchairs and wheelchairs.

## Bluebells and birdfeeders

One thousand native English bluebells have been planted next to the main entrance gate near the Fire Station. During the planting, an old horse harness was unearthed, a relic from days when horses and ponies grazed on the land.

The pasture had its annual mow, with the cut grass piles providing a good habitat for many creatures, including small mammals. Resident fox Foxy Boy is no longer around but another very shy fox with a distinguishing pale tail may have taken over his territory.

Many visitors have seen a heron in or next to the large pond. Lots of goldfinches have feasted on the teasel seeds and a bird feeding station has been set

up, which is proving very popular with blue tits and robins.

## Helpers welcome

Poor weather has forced the trustees to close the pasture to visitors until March. Work parties, however, will continue to take place on Saturday mornings

from 10am to 12 noon and more helpers of any age and ability (with waterproof footwear) are very welcome.

For more information, including a photo gallery of the pasture through the seasons, visit [www.longlanepasture.org](http://www.longlanepasture.org).

## Don't miss out on your Freedom Pass

**Barnet's over-60 and disabled residents who are eligible for a Freedom Pass are being urged to renew their passes before the deadline of 31 March 2010 to claim free travel on the capital's bus, train, tube and tram networks.**

This year, new-style photo passes, valid for five years rather than the current two, are being issued to increase security. Application forms are available from the Post Office or online at [www.freedompass.org](http://www.freedompass.org). Over-60s should return the form along with a photo of themselves to the Post Office. Before you do, read Diana Cormack's cautionary tale below.

## Does your Freedom Pass face fit?

By Diana Cormack

**"We've had more than 20,000 queries about the new Freedom Pass," said the lady at Transport for London, "but yours is unique." Maybe I should have felt flattered, but I don't believe the credit belongs to me. Take a bow, East Finchley Post Office!**

On presenting my correctly filled-in renewal form along with a passport-sized photo, I was amazed when the counter assistant said it wasn't acceptable because my ears weren't showing. I argued that I have the same hairstyle on my new passport photo, also used on a travel visa, but she insisted. I asked why the renewal form didn't specify that ears be shown and was told that Barnet had sent an explanatory letter to all applicants (nobody in my house

received one).

After managing to find a phone number for the Post Office, I eventually spoke to a man in "Complaints" who told me that the counter staff had been instructed not to accept such photos in keeping with Freedom Pass guidelines.

When I phoned TfL, they agreed there had been a misinterpretation of the guidance about how the photo should conform to government travel card standards: "It should include the whole head and not have any of the chin, top of head or ears missing" (the first six words convey the meaning). TfL phoned East Finchley to set the matter straight and advised me to wait a few days until the message "filters through".

THE ARCHER later spoke to staff at the Viceroy Parade Post Office and it seems that the wording of the ruling confused staff in other branches, too.

What bothers me is this: because of the misinterpretation, did any over-60s pay for new passport photos, change their hairstyles or offer to shave off their beards? Even Vincent Van Gogh would have had problems with this one.



Photo by Adam Justice-Mills.

## Reflections on Lincoln Parade

**In our last issue, we asked for your memories of the now-demolished Lincoln Parade. Photographic artist Adam Justice-Mills sent us this picture of the Lincoln Road shops standing empty before the demolition crews moved in.**

It will be one of the images to be shown at the TransForm art show in March, the first purely photographic show to be staged by the East Finchley Open group. Adam says: "I'm interested in how the vacant shop windows work as mirrors, contrasting the empty potential of the shops with the bustle of the High Road."

## Two shops remembered

Steve Oxtoby, who was landlord of the Five Bells pub in East End Road from 1985 to 1991, now lives and works in Leeds but remembers very well the Lincoln Parade pet shop run by Peggy and Bill. Read Steve's letter on page 11, alongside one from Ian Cormack describing Gus the barber's special style.

Vasco D'Gama, of Chandos Road, has lived in East Finchley for 50 years and remembers both shops, too.

He writes: "As a child I can remember going into the pet shop to see the tropical fish and the small animals. Peggy and Bill were always

happy to let the local children come into the shop, and sometimes let them feed the tropical fish. I am pleased to say that I bought the last cat when the shop closed a few years back. We still have Cyclops and he is going strong.

"The gents' barber shop was run by two brothers. Unfortunately I cannot remember their names, but as a teenager I always had my hair cut there. After the cut you would have your hair singed by candle, and then they would always ask if you wanted something for the weekend. It is a shame that the parade has now gone, but that's progress."

## Midhurst Butchers

Certified organic meat  
at reasonable prices  
Free-range poultry  
Home-made sausages  
(including Boerwors)

2 Midhurst Parade,  
Fortis Green, London N10  
Tel. 020 8883 5303

## TELEPHONE FAULTS REPAIRED

50% CHEAPER THAN BT \* the POST OFFICE \* TALK TALK etc  
HOME \* OFFICE \* FACTORY  
LINES \* EXTENSIONS \* EQUIPMENT - TESTED & REPAIRED

Call RON COLLINS 0208 883 9325 \* 07748 278728  
email: [roncallsaver@yahoo.co.uk](mailto:roncallsaver@yahoo.co.uk)

## Counselling and Psychotherapy - Space for Thinking

Experienced NHS Practitioner - supervised  
Provides confidential therapy dealing with depression, anxiety, trauma, abuse, relationship issues and many more...

Offers short and long term therapy.  
Free initial consultation and competitive rates.

[dragana\\_savcic@hotmail.com](mailto:dragana_savcic@hotmail.com) tel: 020 8292 9480 mob: 077 3955 8155

## BOBATH CENTRE FOR CHILDREN WITH CEREBRAL PALSY

## Virgin London Marathon

If you have your own place in this year's Virgin London Marathon, we would love to have you on our team. Please contact Sarah on:

020 8444 2275

or

[sarah@bobathlondon.co.uk](mailto:sarah@bobathlondon.co.uk)



[www.bobath.org.uk](http://www.bobath.org.uk)

Registered Charity 229663

The Bobath Centre, 250 East End Road, London N2 8AU

## CASH FOR TRASH



Do you want to sell your old stuff on eBay and turn it into cash? Are you mystified or worried? Let me help you whether it's a car (we usually get better than dealer prices)

unwanted items such as cameras, computers, jewellery, furniture or even designer clothes.

I work on a no sell no fee basis.

Why not email or call me for a free chat.

Tony Joseph

07957 494573 - 0208 883 7296  
e:- [tonyjoseph99@yahoo.co.uk](mailto:tonyjoseph99@yahoo.co.uk)





## YOUNG ARCHER



Magnificent seven: left to right, Rebecca, Deborah, Cecilia, James, Megan, Abigail and Gabrielle.  
Photo by John Lawrence

## Magnificent seven in show-business together

Five young cousins and their mums are staging a children's comedy show at the Finchley Youth Theatre. Billed as a bit like *The Wizard of Oz* but much wackier, *The Fart and Burp Show* is ideal for families with children up to the age of 11, though everyone is welcome.

The show has been written by 11-year-old Megan Whelan and her mum Cecilia Holmes, a comedy performer, who live in Park Farm Close. Acting talent, dance skills, costumes and stage management are being supplied by Megan's cousins Abigail, 13, Deborah, 11, Gabrielle, nine, James, five, and their mother Rebecca Fuller, all from Woodhouse Road, N12.

"*The Fart and Burp Show* is about an outbreak of piggy 'flu that affects the children of Finchley," said Cecilia. "There is a pongy smell and strange noises coming from the children's lips. Armed with water pistols, the residents of Finchley go on a quest to find

the source of the outbreak. The suspected monster is seen lurking in the bushes as the mystery unfolds."

The seven performers often act and dance at home but this will be the first time they have worked together on stage. If the show is a success, they plan to take it to the Edinburgh Festival, where children's shows are in short supply.

Their show will be on at the Finchley Youth Theatre, 142 High Road, N2, on Saturday 27 February at 7.30pm. Tickets priced £7 for adults and £5 for children (under-threes are free) are available from Cecilia on 07533 750400 or [ceciliaholmes@btinternet.com](mailto:ceciliaholmes@btinternet.com).

## Vote for a classic film

Mini Cinema is a new film club in Highgate where you get to choose the movie. Classic film-lovers can vote for what they'd like to watch by email or on the Mini Cinema Facebook page.

The winning film gets screened on the second Monday of each month at the cosy pub The Boogaloo at 312 Archway Road, a two-minute walk from Highgate tube station. Previously screened classics include *Roadhouse*, *Top Gun*, *Gremlins*, *The Shining*, *Bugsy Malone*, *Footloose* and *The Breakfast Club*.

Tickets are £2 and include free popcorn and a free raffle. There are cheap bar prices, comfortable seating and a candle-lit atmosphere. To reserve a table, email [hann.haha@gmail.com](mailto:hann.haha@gmail.com)

## Festivals and feastings at Martin

### Primary

Martin Primary School gave parents and children the chance to have a small 'taste' of three different festivals celebrated by families within the local community.

The festival of Eid ul Adha fell over the final weekend of November, Hannukah was celebrated over the second week of December, and Christmas around the World was celebrated at the school during the final week of the term.

At each after-school event, parents and staff contributed dishes of the speciality foods that typify each festival. Everyone else came to enjoy and sample them, indulging in succulent lamb cooked with onions and almonds, spicy samosas, sweet jammy doughnuts and savoury latkes, Panetoni, mince pies and

mulled wine

The events were an opportunity to value, appreciate and share in the celebrations of some of the communities in the East Finchley area and to learn about the stories and meanings remembered at each festival, against a background of music from the different cultures represented.

A common thread was evident: the role of 'the feast' in drawing families together for a time of sharing. At Martin Primary School 'the feast' has proved to be a successful way of drawing communities together.

## School of rock is back

Up-and-coming bands and musicians are being sought to take part in this year's Barnet Rock School. Following the success of last year's Great Rock 'n Roll Circus gig, the school kicks off again this month.

An artsdepot concert in March will again be the climax of the three-week performance course run by Barnet Council's Youth and Connexions and Music Service. It gives young bands and musicians aged 13-19 living in Barnet the chance to develop their performance skills with experienced musicians.

Individual musicians who want to get a group together can apply for the course, as well as bands that have already formed. The course allows musicians and vocalists time to rehearse at a professional studio in preparation for their individual 20-30 minute long

performances.

Barnet Rock School will run over February half term in a series of daily rehearsal sessions from Monday 15 to Friday 19 February at Downs Sounds Studios in New Southgate followed by three final rehearsals on Saturdays 27 February, 6 March and 13 March in preparation for the 19 March grand finale event.

The Great Rock 'n Roll Circus will be filmed and each band will receive a DVD of the gig. If you are interested in taking part, contact [Rock@barnet.gov.uk](mailto:Rock@barnet.gov.uk), or call 020 8359 6310.

## Positive pictures of old age

"A positive picture of older generations: challenging stereotypes" is Age Concern Barnet's 2010 photography competition, open to all 11 to 19-year-olds in the London Borough of Barnet. The charity says the aim of the competition is to challenge stereotypes younger people may have of older people and to encourage positive interaction between the generations.

Amongst the winners and runner-up prizes will be a signed Barnet Football Club shirt and passes to Hollywood Bowl. A prize of £100 to spend at B&Q on plants and gardening equip-

ment will go to the school or college attended by the overall winning entrant.

There are two categories for the competition: 11 to 14-year-olds and 15 to 19-year-olds. There will be a winner and runner up prize for each category. One of the two winning entrants will be chosen as an overall winner. Entrants are encouraged to interpret the theme widely.

Entries must be received by Thursday 24 June 2010 and winners will be announced on Thursday 8 July 2010. For an entry form and full information about the competition please contact Lisa Dubow on 020 8432 1417 or email [lisa-finchley.acb@btconnect.com](mailto:lisa-finchley.acb@btconnect.com). Entry forms and full information can also be downloaded from [www.ageconcernbarnet.org/calendar/photographycompetition2010](http://www.ageconcernbarnet.org/calendar/photographycompetition2010).

### bellis architects

Bellis Architects are here to guide you through the process of realising your design aspirations offering a range of services to suit any requirement and budget. We are available from initial discussions through to complete project management.

We understand the value of improving the living spaces of existing houses and how that enhances the occupants' lives. We also understand where good design can add financial value to your home.

Bellis Architects work collaboratively with clients, consultants and builders to maximise the potential of a house to create:

- alterations
- extensions
- interiors
- improvements

that are dramatic, uplifting & functional.

Our objective is to deliver quality modern design responsive to the client's needs.

Visit our web site to see past projects: [www.bellisarchitects.com](http://www.bellisarchitects.com)

Tel 020 7831 2333 / 020 8883 4748  
[info@bellisarchitects.com](mailto:info@bellisarchitects.com)



RIBA  
Chartered Practice

### All Saints' Church, Durham Road, East Finchley Church of England

Sunday masses at 8.00 a.m. and 10.00 a.m.

Weekday masses at 10.00 a.m.

Prayer requests are gladly accepted.

The Parish has a flourishing social life.  
Contact the Vicar, Fr Christopher Hardy,  
on 020 8883 9315.

All Saints' also has a strong musical tradition and an enthusiastic choir of both adults and children.

Experienced singers are always welcome.

Contact Geoffrey Hanson on 020 8444 9214.

<http://www.allsaints-eastfinchley.org.uk>





## Petition for better bus service rejected

Transport for London has rejected a petition signed by more than 400 people for a new bus route from North Finchley via East Finchley to the Royal Free Hospital, on the grounds that the route would require a subsidy estimated at more than £800,000 a year.

Barnet Green Party, which raised the petition, has put forward a modified proposal to run hourly journeys on the existing 603 route between Muswell Hill and Swiss Cottage and to modify the route slightly to take it past the Royal Free.

### 603 potential

The daytime journeys would help people to reach the Royal Free while the evening buses would be popular with people wanting to attend social events along the route, which goes via East Finchley, Highgate village, Kenwood, The Spaniards Inn and Hampstead village. The 603 currently operates only four journeys each way from Monday to Friday, two in the morning and two in the afternoon, mainly to serve north London schools.

### TfL figures queried

Responding to the petition, David Brown, TfL's managing director for surface transport, said that a North Finchley to Royal Free route would not attract enough passengers to justify the estimated subsidy. But Andrew Newby, of the Green Party's East Finchley group, said:

"TfL bases its rejection of a new route on its estimate that there would be around 700 passenger trips per day if a 20 minute service was provided. People in East Finchley know that far more people than that would use it, reducing the amount of subsidy the route would require. 'More and more Finchley people are being referred to the Royal Free Hospital. At the moment people have to take two buses and it usually takes them over an hour to get from East Finchley to the Royal Free.'"

### Other ideas dismissed

Transport for London has also rejected other ideas for improving bus routes between East and North Finchley, linked only by the 263. According to TfL's calculations, extending route 17 to North Finchley would cost around £1.2 million, while diverting some 134 buses via East Finchley would deprive the existing route of sufficient capacity at peak times.

## Acting up

By Lucy Chamberlin

East Finchley has long had a reputation as a hotbed of artistic and literary talent, and now our neighbourhood can welcome another actor into its midst. Having lived in Muswell Hill since 1959, last October Heronimo Sehmi and his family made the small (but significant) move to Deansway in N2.

Heronimo has a vast array of bit parts as well as more significant roles under his belt, and in 2009 played Mr Seppish, a headmaster and chief werewolf in horror film *Nuryan*, an all-British affair that employed a pioneering 'split-screen' method.

As a schoolboy, Heronimo knew he wanted to act, and he landed his first professional roles as a teenager. "I love portraying other people's lives," he says. "Acting gives you the confidence to do things you never thought you would. It's a hugely

positive thing, especially for young people."

In his time, Heronimo has run workshops for young people at the Africa centre in Covent Garden, not to mention schools in Haringey and Barnet. On his days off, he busies himself horse riding, painting, pot making and playing his guitar. But his first love is the stage, and he reminisces about acting at The Globe "when it was only a tent", in a Brecht musical directed by Sam Wanamaker.

Heronimo himself has done a fair bit of directing, one highlight being *Deathwatch* in 2005.



He is keen to pass on his talents to his two daughters, aged 20 and 16. The elder wants to be a playwright, and the younger is already an artist.

## Green Party in town

The Green Party is hosting its spring conference at artsdepot in North Finchley from 18-21 February. The party says it is its first-ever national conference in north London and possibly the first conference of a national party to be held in the area.

## KALASHNIKOV KULTUR

By Ricky Savage, the voice of social irresponsibility

## St Florist's Day

After the white Christmas and the wrong type of snow it's time to emerge into the frozen wasteland of February and realise that things are still weird. And, after saying it with snow drifts, now we've got to say it with flowers. Yes, folks, it's St Florist's Day again. Once a year florists wake up, smell the coffee and put up the prices. No wilting roses from the petrol station for five quid; on St Florist's Day it's five quid a rose as the world pays tribute to one of the world's least known saints.

Very little is known about St Florist, but according to one story he was a flower seller in first century Rome who fell in love with a Vestal Virgin. Forbidden to speak to her on pain of death he gave her a red rose each day until, on the twelfth day, he was spotted by a high priest and arrested. Demonstrating their highly developed sense of humour, the Romans drowned him in rose petals. His last words were 'a rose for my rose'. Which should have been the end of it but for two things: firstly, the 12 roses he had given to the temple virgin never faded and secondly, roses grew on his grave, flowering every 14 February, the anniversary of his death.

This tragic tale of unrequited love was forgotten for nearly 2,000 years until a rose grower rediscovered it in the 20th century. And now, on the anniversary of St Florist's death, men everywhere pay tribute by giving their beloved 12 roses. Well, that's what the bloke outside the tube station who charged me 30 quid for a dozen roses told me.

Not everyone says it with flowers. The Japanese do it with chocolates, but over there it's the women who do the giving, the men have to wait another month to return the compliment on White Day. Must make life interesting.

But why stop with flowers and chocolates? The Anglo Saxons called February Mud Month and in the Ukraine it's the month of ice. Better still, go back to the old Welsh tradition and give your lover a wooden spoon. It's more useful than a bunch of wilting roses bought from the petrol station.

## Nudity and torpedoes

An exhibition documenting the 175 year history of the Welsh Harp Reservoir has opened at the Church Farmhouse Museum in Hendon.

The free exhibition, which runs until February 14, documents the fascinating history of the reservoir on the boundary of the boroughs of Barnet and Brent. Built to replenish water supplies lost by the many locks on the Regent's and Grand Union Canals, the reservoir opened in 1835. Originally used for swimming and fishing, the area became a popular recreational spot in the 1860s thanks to skating, shooting and horse racing introduced by William Perkins Warner, the landlord of the now-demolished Welsh Harp pub, from which it takes its name.

Over the years, the Welsh Harp has also seen the testing of torpedoes in the 1870s and tanks during the First and Second World Wars as well as some more unusual events including the Hendon Nudist Riots during the hot summer of 1930, which saw fighting between some 200 Hendon residents and nude sunbathers. The Church Farmhouse Museum in Greyhound Hill, NW4, is open Monday to Thursday, and Saturday from 10am to 1pm and 2pm to 5pm, and on Sunday from 2pm to 5.30pm.

## Web Design 50% More Free

A Website represents your interests..

..and from £275 including Domain/Hosting!

New Website, New Offers and Latest Tech!

info@andysweb.net

www.andysweb.net

07972 232 341

**East Finchley Baptist Church**  
Creighton Avenue  
East Finchley  
Tuesday's 5pm or 6.45pm  
Call Natalie on 07889 252548  
All ages welcome  
including children from 11 years old!

Bring this advert to your first session and receive 50% discount on membership

0844 897 8000  
www.slimmingworld.com

**SAVE £5**  
JOIN NOW!

**FREE**  
weight support  
24/7

**NEW**  
extra easy  
start your plan

**Slimming**  
WORLD  
SECURE YOUR FUTURE

## Proteus Professional Cleaners

Making your life easier



GENERAL DOMESTIC AND OFFICE CLEANING  
CARPET WASHING · UPHOLSTERY  
AFTER BUILDERS CLEANING · SPRING CLEAN

WE WORK SEVEN DAYS A WEEK AT VERY REASONABLE RATES

FULLY INSURED COMPANY

For a quote call 07859 946 435

RICARDO RAMOS

info@proteus-professional-cleaners.co.uk

## LAYZELLS SOLICITORS

### LASTING POWERS OF ATTORNEY

Would you like your family or friends to be able to help with your finances or personal welfare as you get older?

LAYZELLS SOLICITORS

255 Muswell Hill Broadway, N10 1DG

have been practicing in this area for over 50 years.

Please ring our Sally Bentley on 020 8444 0202 if you would like to discuss this further - home visits can be arranged if needed.

## KF COMPUTERS & IMAGING

FUJIFILM DIGITAL

93 HIGH ROAD, EAST FINCHLEY, N2 8AG

02088159898

- LAPTOPS & PCs SALE & REPAIR
- CUSTOM BUILT COMPUTERS
- DATA RECOVERY/BACKUP
- REINSTALL SOFTWARES
- WIRELESS/WIRED NETWORKING
- ALL ACCESSORIES AVAILABLE
- SAME DAY SERVICE
- FREE LAPTOP/PC CHECKUP
- PHOTO PRINTS ANY SIZE
- CUSTOM SIZE AVAILABLE
- CANVAS PRINTS & MOUNTING
- DIGITAL CAMERAS & FRAMES
- ALBUMS TRI/MONO PODS
- QUANTITY DISCOUNTS
- BEST QUALITY & PRICES

6 PASSPORT/ID PICTURES £4.99 ONLY





## Regular Events

### SPORT & FITNESS

- ❖ **Finchley & Hornsey Ramblers Group** Call Vivien 8883 8190
- ❖ **Glebelands Indoor Bowls Club**, Summers Lane N12. New and experienced bowlers welcome.
- ❖ **Keep fit for the Retired** on Wednesdays, Christ Church N12. Call Bridie 8883 5269
- ❖ **Muswell Hill Bowling Club**, Kings Ave, N10. New & experienced bowlers welcome. Tel: 8883 1178.
- ❖ **Pilates** in East Finchley, qualified teacher. Contact Dee on 8883 7029
- ❖ **Pilates class** Weds 3.30 & 7pm at Ann Owens Ctr, N2. Call Penny Hill 8444 2882.
- ❖ **Tae Kwon Do** for children & adults at Finchley Lido Mon & Fri 7-9pm 07949 612 706
- ❖ **Tai Chi class** at East Finchley Methodist Ch, Weds at 1pm. Call James Drewe 8883 3308 or james@taiji.co.uk
- ❖ **Tennis club** with four clay courts off Southern Road. Call 8883 7723.
- ❖ **Yoga, breathing & relaxation**. Weekly drop-in classes - N3, N6, N10. Phone Judy on 07956 375607.
- ❖ **Yoga**, pregnancy yoga, meditation classes. Call Sunnah 07941 321 772 or see [www.stretchingpeople.co.uk](http://www.stretchingpeople.co.uk).

### MUSIC, DANCE & CREATIVE ARTS

- ❖ **Art Classes**. For info call Henry on 8888 5133.
- ❖ **Ballroom Dance Classes**, Wednesday eves for beginners & improvers. St Mary's Church Hall, N3. 8444 0280.
- ❖ **Ballroom & Latin American Dance Classes** - beginners and improvers. Wed & Fri eve, Bishop Douglass Sch. 8207 2323.
- ❖ **Creative writing classes** in informal, friendly atmosphere. Tel Sallie Rose 020 8444 7217.
- ❖ **East Finchley Writers Group**, Weds at the Old White Lion. Contact Carola 8883 5808 or Lilian 8444 1793.
- ❖ **East Finchley Poetry Writing Workshops**. Monthly on Saturdays. Contact Dennis Evans 8346 9528.
- ❖ **Finchley Jazz Club: Live jazz on Mon** 15 Feb at 8.15pm, Wilf Slack Cricket Pavilion, East End Rd, N3.
- ❖ **Memory Lane Singing Club** - friendly singing club meets every Friday in Finchley. Call Valerie 8458 4508.
- ❖ **Over 50s Tea Dance** at Christ Church, North Finchley. Every Weds, 1pm. 020 8444 0280.
- ❖ **Learn to sing** at Finchley Methodist Church, Ballards La. Call 8888 4412.
- ❖ **SwampRock Louisiana Dance Club**. Live music. Contact 07957 344 724 or [www.swamprock.org.uk](http://www.swamprock.org.uk).
- ❖ **Symphonic Wind Orchestra** Contact Caroline Egan 8340 2706
- ❖ **Traditional music** at EF Constitutional Club on 2nd Monday each month from 8.30 pm. Free to join in or just listen.

### CLUBS & SOCIAL

- ❖ **Bingo evening** at the Constitutional Club, The Walks, N2. Sundays at 8pm.
- ❖ **Bingo Club** Mondays 7-9 pm, Green Man Centre, Contact: Jan 8815 5459
- ❖ **Contact Lunch Club** Tuesdays at the Green Man. Call 8444 1162 to book.
- ❖ **Dads' Club**: Get-togethers for dads looking after young children in East Finchley. Adam 07957 441435.
- ❖ **EF National Childbirth Trust** contact Ruby Yang or Patrizia Canwell at [eastfinchleynct@googlemail.com](mailto:eastfinchleynct@googlemail.com)
- ❖ **Finchley & District Philatelic Society**, Contact Brian 8444 3251
- ❖ **Friendly Rubber Bridge** on Weds afternoons, call 7722 6209.
- ❖ **Friends of Cherry Tree Wood** [www.cherrytreewood.co.uk](http://www.cherrytreewood.co.uk) or 8883 7544.
- ❖ **Haringey Recorded Music Society** informal meetings locally. Call David Mouldon on 8361 1696.
- ❖ **LGBT?** 1st Weds every month in a local pub. Welcoming atmosphere. Email [efinchleylgbt@hotmail.com](mailto:efinchleylgbt@hotmail.com)
- ❖ **North London Bridge Club**, Muswell Hill. Contact 8348 3495
- ❖ **Jewish Friendship Club** for over 60s, Tuesdays 1-3pm at Muswell Hill Synagogue, Tetherdown. Call Anita Shaw 8886 6140.
- ❖ **Muswell Hill Tetherdown Bridge**, contact 8883 4390
- ❖ **Old Barn pre-school club**, contact 8349 4613/1961
- ❖ **Parent & Toddler Group**, Green Man Centre, Julia 8444 2276
- ❖ **Probus Lunch Club** for retired professionals. Call John 8883 8114.
- ❖ **Stepping Stones**, interactive play session for under 3's. Karen 07957 278860.



Jake Fitzjones Photography.

## Ninety years for North London Festival

The North London Festival of Music Drama and Dance is celebrating its 90<sup>th</sup> birthday this year. Its new chairman Virginia Burdon-Cooper, herself a flautist, is no newcomer, having been a section secretary for the last 13 years.

This festival is one of the largest in Britain and is held in high esteem by the British and International Federation of Festivals.

### Strings, piano and harp

As part of the main festival, three special events are held annually. The international Solo Bach Competition for Strings attracts competitors from as far afield as Australia; the Emanuel Trophy for Pianists is national only and competitors must either have won the top piano prize in a nationally recognised festival or be a festival nominee; and the harp competition is national too.

The festival caters for all branches of drama, dance and music, including composition, and includes all ages and abilities. It aims to educate as well as being enjoyable and competitive. Every entrant is given a verbal and written adjudication by adjudicators of high professional standing in their own sphere. The Festival does not receive any funding from either local or government sources, depending instead on sponsors and patrons, and is run entirely by volunteers.

In 2010 it runs from 14 April to 21 May, mainly in Muswell Hill at the United Reformed Church, Tetherdown, with the drama and dance sections being based in Whetstone. Full information can be obtained from Virginia Burdon-Cooper on 01442 877486 or [nettleden@bopenworld.com](mailto:nettleden@bopenworld.com) or the comprehensive website at [www.northlondonfestival.org.uk](http://www.northlondonfestival.org.uk)

## What's On...

### Saturday 6 February

• **The London Mozart Players** join Geoffrey Hanson in celebrating his 70th birthday at a concert at All Saints', Durham Road, 7.30pm. Local pianist Rimantas Vingras will be the soloist in Geoffrey's *Piano Concerto No 2* and Ian Priestley in his *Five Nocturnes*. The **London Ripieno Singers** and the orchestra perform **Handel's Coronation Anthem, Zadok the Priest and Schubert's Mass in G**. Tickets available from Les Aldrich, 98 Fortis Green, N10.

### Saturday 13 February

• **Celebrate Valentine's Night with Noah's Ark Children's Hospice. "Two hundred years of British entertainment in 60 minutes"** by Christine and Peter Padwick, an evening of laughter and songs at St Andrew's Hall, Silver Street, Enfield, EN1 3EG. Tickets £12 to include show, light supper and dessert. To reserve tickets, contact Amy Walker on 020 8449-8877 or [awalker@noahsarkhospice.org.uk](mailto:awalker@noahsarkhospice.org.uk)

• **Valentine Dance featuring The Revolutionaires**; jumping hot 1950s rhythm & blues from 8pm to midnight at All Saints Arts Centre (next to All Saints Church), 122 Oakleigh Road North, Whetstone, London N20 9EZ. £10 entrance. Further info from Carole Latham on 07957 344724 or [www.swamprock.org.uk](http://www.swamprock.org.uk)

### Sunday 14 February

• **Antique Collectors' 20<sup>th</sup> Century and Art Deco Fair**, Ally Pally, 9.30 - 4.30. Free shuttle bus from Wood Green and Alexandra Palace stations. Entrance: adults £5, children under 14 free. To pre-book, call 01263 888111 or visit [www.nelsonfairs.co.uk](http://www.nelsonfairs.co.uk)

• **Free concert at East Finchley Methodist Church**,

197 High Road, N2 (opposite Creighton Avenue) at 7.30pm; Marina Solarek, violin, Bryan Fairfax, viola, and Caroline Soresby, piano, play works by **Brahms, Mozart and Fauré**. Collection in aid of the Royal National Institute for Deaf People. Venue fully accessible to people with disabilities.

### Sunday 21 February

• Dress up, grab your dancing shoes and join us at our **Purim Extravaganza**. Enjoy face-painting, Mini-me beauty stall, graffiti wall, chill out area and Hip Hop Megillah Performance. Suitable for children any age up to 12 and their families and friends. In association with the Jewish Chronicle; 3-5pm; Hampstead Town Hall, 213 Haverstock Hill, London NW3 4QP. Price: £5 per child 2 years and above, £2 per adult. Tickets and information: 020 7431 9866. [www.jcclondon.org.uk](http://www.jcclondon.org.uk)

### Monday 22 February

• **Jewish Community Centre for London: debate on "Israel & Iran: How Will it End?"** at Hampstead Town Hall, 213 Haverstock Hill, London NW3 4QB, 8pm. Price: £10 in advance, £12 on the door. Tickets and information: 020 7431 9866

### Tuesday 23 February

• **Coldfall Wood**: help to cope this ancient woodland. Meet 10am on site and finish about 4pm. Bring a packed lunch. Tea, coffee and quality biscuits are provided. Please wear sensible clothing and shoes. General enquiries: Haringey British Trust for Conservation Volunteers on 020 8348 6005.

### Wednesday 24 February

• **Crochet class for beginners**, 7pm at an East Finchley venue. All materials and refreshments provided. Make beautiful gifts and accessories after just one class. Invite friends and make a night

E-mail your listings to: [the-archer@lineone.net](mailto:the-archer@lineone.net)

of it. Full details: Omara on 07932 035325 or visit [www.omarama.co.uk](http://www.omarama.co.uk). Other class dates available.

### Saturday 27 February

• Five-week course on **Getting Started in the Garden**. The Institute, 11 High Road, East Finchley, N2 8LL, £100. [www.hgsi.ac.uk/courses-349](http://www.hgsi.ac.uk/courses-349)

• **The Burp and Fart family comedy show**, a zany and funny evening for families with children up to 11, with comedy performer Cecilia Holmes and a gang of young performers; **Finchley Youth Theatre**, 143 High Road, 7.30pm. Tickets: £5 for children, under threes free, and adults £7. Fortickets, contact Cecilia on 020 8444 8702 or 07533 750400. This replaces Cecilia's comedy night on 13 February, which has been cancelled.

### Sunday 28 February

• **Guided walk on the Battle of Barnet**, a fascinating insight into the battlefields and people of this famous Wars of the Roses encounter of 1471. Meet at junction of Great North Road and Hadley Green Road at 11am. Details from tour guide Paul Baker on 020 8440 6805.

### What's on at artsdepot, North Finchley, in February

**Moishe's Bagel**, Tuesday 9 February, 8pm; **Bonachela Dance Company**, Thursday 11 February, 7.30pm; **Folk in the Foyer**, Friday 19 February, 8.30pm; **Sunday Buzz**, FREE lunchtime concert, **Plastic Chairs**, Sunday 21 February, 1pm; **Handful of Henna**, Wednesday 24 February to Saturday 27 February, 7.30pm, plus 2pm on Saturday; **Morecambe: The Man What Brought Us Sunshine**, Sunday 28 February, 7.30pm; **Julian Clary, Lord of the Mince**, Thursday 4 March, 8pm; **Cara Dillon**, Friday 5 March, 8pm.

## The Sale

(must end 13th February 2010)



# UP TO 80% OFF FRAMES

Only condition is that you pay the usual low prices for lenses.

**TOP FRAMES  
LATE CLINIC  
ALL TYPES OF  
CONTACT LENSES FITTED  
DYSLEXIA CLINIC**

126 HIGH ROAD, EAST FINCHLEY, N2 9ED  
(020) 8883-2020

# STEWART-DUNCAN OPTICIANS

<http://www.stewartduncan.com>





Send your correspondence to: "Letters Page", The Archer, PO Box 3699, London N2 8JA or e-mail the-archer@lineone.net.

Letters without verifiable contact addresses will not be reviewed or printed. Contact details can be withheld, however, on request at publication.

### Pavilion plan publicity

Dear Editor

You have published a number of letters that suggest there is wide support for the scheme to rebuild the pavilion and turn it into a café/leisure centre.

The proprietor of the existing café, who is the proposer of the scheme, has clearly enlisted a lot of friends to write to you. She has also published a blog that is very hard to follow, unless you want to read all 11 pages of it. See <http://cherrytreepavilion.blogspot.com/>.

It is a very lengthy autobiographical piece and the most important aspect is towards the end: that Friends of the Cherry Tree Wood Pavilion have gone back to draw up plans again, which may or may not be available for people to see ahead of submission to the council.

Cherry Tree Wood is not a 'park'. It is woods, namely Metropolitan Open Land, which should be afforded similar protection to greenbelt land.

At the only meeting well attended by local people, held in East Finchley, all but two of the around 100 people attending said they did not want the sort of development described. In particular the late night opening, the suggested entrance in the nearby alley, the increased noise and disruption, and the need to preserve the existing space were mentioned.

This fact of local opinion should count for more than a clever publicity campaign.

Yours faithfully,  
Barry H White,  
Fordington Road, N6

### Pavilion website is no help

Dear Editor,

So Sally-Anne Wigfield wants to "set the record straight" regarding her plans for recreating the Cherry Tree Wood pavilion (THE ARCHER, January 2010)? If the project she kick-started makes her so miserable, could she perhaps just change the record altogether?

Her attempt to offer the full story on her website is no more helpful than a tantrum. Worse still, it exacerbates already fragile relations with residents who do not fully support the plans, with destructive comments such as her feeling those who haven't signed up to

## Letters to the editor

her particular "vision" must therefore consider the Wood an "extension of their backyard".

I would have been more interested to read her CV than anything else so as to judge for myself the suitability and expertise of Sally-Anne to spearhead such a significant community project.

Yours faithfully,  
Name and address supplied

### Better idea for pavilion

Dear Editor,

The proposed café/activity development of the derelict pavilion in Cherry Tree Wood is unnecessary and inappropriate for this site. There is no shortage of cafés, social and communal meeting places, or activity rooms in East Finchley. However, green spaces are in limited supply in the area.

Alternative solutions would be to demolish the pavilion and integrate the ground that it covers into the rest of the park or to transform it into a wildlife educational centre similar to the facility in Highgate Woods. The latter would be environmentally and educationally responsible and compatible with Barnet's green spaces policy.

Yours faithfully,  
Peter Forbes,  
Address supplied.

### Happy memories of Lincoln Parade

Dear Editor,

I read with interest the article about the demolition of the Lincoln Parade shops (THE ARCHER, January 2010). I lived in East Finchley from November 1985 until July 1991, when I was the landlord of The Five Bells on East End Road. I read THE ARCHER on the internet every month to catch up on what's happening in East Finchley.

My time at the Five Bells and living in East Finchley was a part of my life that I will always remember. I am still in contact with a lot of friends and I visit as often as I can. Both my children were born during my time there.

During that time I visited the pet shop on a regular basis to get food for our various pets (dogs, rabbits and goldfish). My daughter was always keen to visit "Auntie Peggy", the pet shop owner, as she was always given some sweets and made a fuss of.

Peggy had what I can only describe as a large Belfast sink in one of the windows that had various types of goldfish in it. On one occasion I bought a couple of catfish that I thought would make an interesting addition to my fish tank. This was a big mistake as they were scavengers and all they ever did was disturb the gravel and cause the water to be cloudy. I happened to mention this

to Peggy on my next visit. "Bring them back and swap them," was her reply. I don't think you would get that at any pet shop these days.

I always enjoyed my daily walk along the High Road and a visit to the pet shop to have a chat with Peggy. Keep up the good work with THE ARCHER. I always find it interesting and look forward to reading it each month.

Yours faithfully,  
Steve Oxtoby,  
Highways Agency, Leeds.

### Something for the weekend

Dear Editor,

Regarding your call for memories of Lincoln Parade, the barber's shop was a wonderful old-fashioned place, both in its fittings and its style. The hot water had to be turned on at the back behind a partition separating off the WC. It had not been decorated for years, the linoleum was worn and the ceiling was part missing.

Despite the Spartan surroundings, the services offered really made you feel mollified. You got a manual scalp massage and one with an oscillating spiky attachment, you could have your cut ends singed with an open taper and your neck shaved with a cut-throat razor honed on a leather strap.

Football was always on the radio and there was always "something for the weekend" if you needed it. From the two chairs it dwindled down to one and the barber was well past retiring even then. All of a sudden he was gone and I still miss the time machine that was.

Yours faithfully,  
Ian Cormack,  
Address supplied.

### So generous

Dear Editor,

Last Christmas Eve, I was given the ok for my regular fundraiser by Budgens manager R Janakan. I woke up feeling one and a half degrees under and had seriously considered going back to bed, but something inside me said I'd be ok.

I'm truly glad I went, as I had an amazing day. Tannaz Kapadia helped set me up with my usual table of goodies, and made sure I was ready to get started.

The shop was incredibly busy all day, with customers stopping to have a chat as well as throwing money into my bucket. I did notice at around 3pm my money-bag being very heavy, and at 4pm decided to pack up and go home.

To all of you who helped make Christmas Eve 2009 a day to remember, we raised a staggering £300, which will be going to the North London Hospice.

I couldn't have done this without you, and so to you, the manager and

Any reader who feels strongly about any matter is invited to use this "Soapbox" column. Please note that opinions expressed are those of the writer alone.



## A most unpleasant evening out

By John Dearing

Last autumn, yet another mobile phone network applied to put yet another array of masts on our roof at Viceroy Close. My neighbours and I duly objected but, to our dismay, the planning officer recommended acceptance, so we attended the planning committee hearing to present our objections in person.

When our case came up, the planning officer presented the details to the committee of councillors. Then we presented our objections; during this, the chairman invited the applicant's agent to speak to clarify some issues. The agent then dismissed all our objections, but in particular the issue of new masts.

With the (willing) help of the planning officer, she said some of the new antennae would be placed on an existing mast in the centre of the roof. In vain we tried to point out that this was not a mobile mast, but an ageing, rusting TV aerial. In stark contrast to his treatment of the agent, the chairman told us we had had our say and should keep quiet. When we protested, the chairman shouted us down.

Losing patience, he guillotined the debate and then, with what can only be described as unseemly haste, immediately voted for acceptance (the chair is not meant to vote at all unless the vote is hung).

This meeting was held in the council chambers, a cold and unwelcoming room reminiscent of a law court, and made us feel like criminals. The manner in which the meeting was conducted can best be described as unpleasant, aggressive and intimidating, and that applied to all the cases, not just ours.

If local politicians want to improve their dreary image, and persuade people to participate in local affairs, they need to do much better than this. I will not willingly attend such a meeting ever again, particularly if it means having to suffer that chairman's appalling behaviour.

I would vote unhesitatingly for any political party that proposed wholesale reform of this process, such as taking it right out of the hands of local councils, and making planning officers directly answerable to the voters.

all the staff at Budgens, thank you so much! I'm proud to be a resident of such a kind and caring community.

Yours faithfully,  
Sippy Azizollah,  
East End Road, N2.

### Slimming surge

Dear Editor,

I am just writing to thank you for including our Slimmers of the Year in your December issue. Never before have so many people come back to our slimming class, or joined for the first time this January because of your paper. I have lost count of the number of people who have come into our Tuesday evening class clutching a copy of THE ARCHER!

Due to its popularity, I would like to extend the offer of £5 off Slimming World membership to all readers of THE ARCHER. Just mention the paper when

you come to class on a Tuesday at 5pm or 6.45pm at the East Finchley Baptist Church in Creighton Avenue.

Yours faithfully,  
Natalie Hanna,  
Slimming World consultant for East Finchley

### Lifeline in the snow

Dear Editor,

I wanted to congratulate the drivers and employees of Sodexo, who provide the Meals at Home service in Barnet. They did fantastic work in the recent snow, ensuring that vulnerable older people received a warm meal each day. As the chair of Age Concern Barnet, I was very impressed and grateful.

Yours faithfully,  
Julia Hines  
Age Concern Barnet

Klages Plumbing & Heating Agency LTD.

CONTACT TELEPHONE No: 020 8346 7218 / 8636

**KLAGE**

A NAME IN PLUMBING FOR OVER 40 YEARS



**brera gardens**

- garden design
- maintenance
- hard landscaping
- interior & office plant displays
- soft landscaping
- East Finchley based

Mob. 07939 557 934

Tel. 020 8365 3615

Email: [breragardens1@btinternet.com](mailto:breragardens1@btinternet.com)

**Acupuncture & Shiatsu**

Effective Treatment for Conditions of Pain, Stress and Anxiety

Appointments  
07795 203107

Utopia  
1A LEICESTER MEWS, N2 8EJ

Squires Lane Medical Practice  
2 SQUIRES LANE, N2 2AU

**Fiona Hurlock** MRSS MAcS  
[www.fionahurlock.com](http://www.fionahurlock.com)

**THE ARCHER**

**Calendar 2010**

Please send me THE ARCHER Calendar 2010.

Name: .....

Address: .....

Postcode: .....

Telephone: .....

Email address: .....

Number of copies ..... at £5.00 per copy.

I enclose a cheque for £..... made payable to 'The Archer'.

All proceeds to The Bobath Centre for children with Cerebral Palsy.

Post this order form to:

The Archer, PO Box 3699, London N2 8JA

Please note: Delivery is free. Allow at least 14 days for delivery.





Shoes, Trainers, Sandals, Bags and Luggage

Complete Repair Service by a craftsman  
Same day if required

Key Cutting

1 Manor Park Rd. N2, behind 88 Church Lane, opposite Trinity Church  
Tel: 07956 329 150 Open 12-7pm

# THE ARCHER

Published by East Finchley Newspapers, P.O. Box 3699, London N2 8JA. www.the-archer.co.uk



Ready for High Society: Kirby Hughes as Tracy, and her maids. Photo by Lucy Young.

## Review: High Society

By Sheila Armstrong

Cole Porter's musical *High Society* played to enthusiastic audiences at *Upstairs at the Gatehouse*, the theatre above the Gatehouse pub in Highgate. John Plews directed, with assurance, an enthusiastic cast and a host of classic songs.

Two *ARCHER* reporters, both John Plews fans, struggled through ice and snow to Highgate. The glamour of press night, the wintry journey through the snow and the 1950s classic songs all combined to ensure the audience, mainly of a certain age, enjoyed the occasion.

Kirby Hughes and Jessica Bastion-Vines as the two Lord sisters, Tracy and Dinah, shone in an excellent cast.

Unusually, the 1956 film came before the stage show. The plot probably doesn't matter, but unsurprisingly is to do with falling in love. The film was a vehicle for popular

crooners Bing Crosby, Frank Sinatra and the inimitable Louis Armstrong. The luminous Grace Kelly played her last role before relocating to Monaco. Crosby and Sinatra hoped the film would raise their profile in a musical world where rock 'n' roll was on the horizon and approaching with speed.

Unfortunately, by the time you read this review, this Gatehouse production will have ended but look out for more high-quality shows in an interesting year ahead at [www.upstairsatthegatehouse.com](http://www.upstairsatthegatehouse.com). Scenes from the film are also on YouTube and the songs have worn very well.

## Glorious banners

A collection of beautifully hand-stitched, colourful banners based on prayers from scripture will be exhibited in the Methodist Church on the High Road during the week of 8 March.

This collection from the Deo Gloria Trust is one of several sets designed and produced by the artist Jacqui Frost for the Cathedral Exhibitions project. They won a Gold Award in the Christian Broadcasting Council's 2008 awards for Best Esoteric/Visual Arts.

Visitors are welcome to drop in at the church on Monday 8 March from 2-3pm, on Wednesday 10 March from 10.30am to 12 noon and on Saturday 13 March from 2.30-4pm.

## Oh, no! It's *that* time of year again

By Victoria Davenport

Greetings to all runners, would-be and almost-runners included. The first of January was a beautiful day to start training for this year's London Marathon, except for, um, a pulled hamstring, old age, and, gee, does it have to be so cold?

It could be worse, like, raining, sleeting, hailing and blowing, right? So stop complaining, get on those base layers and gloves and get out there.

The latest issue of *Runner's World* is full of over-the-top whoopdeedooda: "Hey, Be-gin-ners! Youcandoit, weknowyoucandoit. YouwillLOVEeveryminuteofit." As you've probably found out by now, that is total rubbish. The truth is that it is hard work, a literal pain in the ass, disrupting, corrupting, dislocating, and you get NO thanks or gold medals for your weekly slog of 'x' (count 'em!) number of miles. None!

The good news? If you don't know it already, the training is much, much harder by FAR than the Marathon could ever be. Just a few weeks from now you will be sailing along, waving to the crowds, accepting sweets and oranges from all those cheering, smiling children, fending off the shouts and flowers and wreaths of honour, and loving every minute of it. The *bad* news is, you gotta do those bloody miles to get there to enjoy it all. Your fellow runners are commiserating, even the guy you pass on that horrible hill (him: coming down zipping along

effortlessly; you: panting and dying and cursing). They know how you feel, they have been there too and have hated it. What matters more than any of that is the simple fact of getting out of the front door again, again and again. Remember, not everyone is as disciplined (or crazy) as you. Well, except for 40,000 others, all doing exactly the same thing. Onward, brave warriors, into the freezing cold, hating it all, loving the spiritual glow of finishing yet another long run.

*Victoria will be running yet another London Marathon this year for the Childhood First charity. To support her, contact [vdavenport@btconnect.com](mailto:vdavenport@btconnect.com).*

## A tale of two carols

By Marian Bunzl

In December, the North London Chorus was invited to sing carols at a Regimental Ball at the Regent's Park Barracks.

As officers and wives arrived for dinner and dancing, we stood at the entrance and greeted them with traditional carols. There was a further round of carols in the bar, finishing up with a jolly "We wish you a Merry Christmas" as the guests went into dinner. In all, we sang about an hour's worth of carols, so each had to be timed with military precision.

It was a most elegant affair. We were in our black concert dress enlivened with sprigs of holly (Victorian dress was suggested, but firmly vetoed by our members), the WAGs in gorgeous ball gowns, and the officers (male and female) in stunning regimentals of dark blue with lashings of gold braid. It was difficult to hear ourselves sing above the jovial chatter but, as one of the lovely ladies was inspired to come and sing with us, we must have made an impression.

A week later, we were due to sing carols at East Finchley Station, and shake a bucket on behalf of the North London Hospice. Alas, the sudden arrival of the Big Freeze prevented both singers and commuters getting there, and the station was blanketed in snow and deserted. It was indeed the Bleak Midwinter.



SECUREBASE

DOMESTIC COMMERCIAL INDUSTRIAL SECURITY

Est 1988

CCTV  
Access Control

Intercom Systems

Intruder Alarms

Locks Doors

Safes Grilles

+ EMERGENCY  
LOCKSMITHS

WHY NOT HAVE  
Your Security Problems  
Solved!  
A FREE ALARM SURVEY



020 8442 0660

112 High Rd • East Finchley • London N2

www.securebase.co.uk

## Review: Dan & DeCarlo café

By James Franklin

After an extensive refurbishment, the café site at 20 High Road has become one of the most popular coffee venues in East Finchley. Located opposite the station and the Institute building, Dan & DeCarlo is attracting a variety of customers, ranging from businessmen to new mothers.

The cupcakes and the muffins are incredible (I recommend the chocolate and blueberry cupcakes), and the café décor is spacious and bright, with a massive table at the front suitable for a group.

Further seating at the back is ideal for those who prefer somewhere more private. Dan & DeCarlo is a worthy addition to East Finchley's excellent range of cafés and eating places.

020 8444 0666  
ACTIVE CHIROPRACTIC  
HEALTHCARE CLINICS  
98 HIGH ROAD EAST FINCHLEY LONDON N2 9EB

### FELDENKRAIS CLASSES

MONDAYS 10.00 - 11.00 AM, PLEASE CALL TO BOOK

Gentle Movement Classes to develop awareness about how you move, overcoming old habits and creating new possibilities in movement and in life.

- Eliminates aches, pain and discomfort
- Improves posture, flexibility and co-ordination
- Gives you greater range and ease of movement
- Enhances athletic or artistic ability
- Helps you breathe better, sleep better, increases your vitality

www.activechiropractic.org.uk email [info@activechiropractic.org.uk](mailto:info@activechiropractic.org.uk)