

**JEREMY LEAF & CO.**

Professional Sales & Lettings  
AT COMPETITIVE RATES  
020 8444 5222  
eastfinchley@jeremyleaf.co.uk

Local News is our Aim

# THE ARCHER



**GLH**

CAR SERVICE  
020 8883 5000

April 2008 No. 175  
ISSN 1361-3952

20p  
where sold

*A community newspaper for East Finchley run entirely by volunteers.*



Photograph courtesy Helen Drake

## Create Theatre

Talented youngsters of East Finchley performing in a production of *Annie*. See the review in *Young Archer* on page 8.

## Stick with the farmers' market

By Daphne Chamberlain

East Finchley Farmers' Market organiser Wayne Atkinson felt badly let down by his stall-holders last month. Only half a dozen turned up, even though he had been led to believe that a much greater number would be there. He told *THE ARCHER*: "I feel deeply ashamed and embarrassed, and I do apologise to the people of East Finchley, who are showing so much commitment."

Wayne is convinced that the trouble stems from his market at Martin Primary School being a monthly one, whereas most markets are held every week. He is determined to find a way round this problem, and is asking for our continued patience and interest.

He told us: "More and more markets are springing up all over the place, but not all of them are genuine farmers' markets. Some of them are selling produce from outside their area, sometimes even from abroad, and the people on the stalls are not always the ones who have grown the produce. Farmers themselves are now asking for ways to counteract this."

He is determined to make this market a successful genuine article, with a two-way exchange between the people who produce the food and the customers who buy it.

Markets are now always

on the first Sunday of every month, 10am-2pm, in Martin Primary School playground. Wayne is always willing to discuss suggestions for the market. He can be contacted on 07757 980 848.

## Don't take away our Post Offices

By Sippy Azizollah

Voices of protest have been heard against plans to shut two Post Offices that serve people in East Finchley. The Post Offices in East End Road and in the High Road, just over the North Circular, near Squires Lane, are scheduled for closure as part of a national cost-cutting plan.

The closures will leave the community with just one Post Office, in Viceroy Parade, High Road, to serve the whole of N2. The nearest alternatives will be in North Finchley and Muswell Hill.

*THE ARCHER* has talked to a number of residents living in East End Road. All say that the closure of this post office will be a disaster for the area. Residents in Strawberry Vale who use the branch near Squires Lane will be equally affected.

Customers told us that the main branch in the High Road already has extremely long queues and often has only two windows open during busy lunchtimes. Some have spent 30 minutes in the queue there and they fear the waits will get even longer.

### Care time will be wasted

Many of the East End Road residents we spoke to rely on carers to do shopping and to deal with pensions and mail. They say travel time to the High Road branch will take carers away from the home and eat into valuable care time.

One young lady told me that there were days when she was unable to go very far: "This office is really convenient for me, the staff behind the counter are really kind and helpful."

If the branches have to close, residents are calling on the Post Office to provide a door-to-door service for people living in retirement homes and sheltered housing.

### Finchley Society speaks out

Their concerns were echoed by The Finchley Society, which said the loss of the two branches would be a severe blow to local people, especially the elderly, and would affect trade in other shops nearby.

Chairman David Smith said: "The Society's opposition reflects the strong views of Society members. This issue is not just about Post Offices; it is about defending the quality of life."

### Post Office response

Anita Turner, Post Office Ltd's Network Development Manager for London, said: "Taking the decision to close any Post Office branch is always very difficult and we know it will cause concern to many of our customers. Our aim is to continue to provide essential services and support retail businesses and the local economy in as many communities as possible, subject to the minimum access criteria set by the Government."

These access criteria state that 99% of the UK population should be within three miles of their nearest Post Office branch, and 90% within one mile.

**EVERYTHING ELECTRICAL**

All domestic and commercial work undertaken by fully qualified electricians

call us FREE on 0800 279 3463 or local rate 020 8444 7994

**ROBERTS**

introducing the beautiful Special Edition Stainless Steel Revival Digital Radio celebrating Roberts 75th Anniversary

**SPECIAL OFFER PROMOTIONAL PRICE AT EVERYTHING ELECTRICAL UNTIL 30th APRIL**

www.everything-electrical.com 38 High Road, London N2 9PJ

**Prime Locations** ..... **The Right Choice**

Estate Agents - Valuers - Residential Sales - Lettings - Management - Cyprus Properties  
40 High Road East Finchley London N2 9PJ Tel: 020 8883 9090 Fax: 020 8883 8580  
Email: enquiries@primelocations.co.uk Website: www.primelocations.co.uk

**Call us for a Free Valuation. Family Business you can Trust.**

**PRICKETT & ELLIS TOMKINS**

36 High Road  
East Finchley N2 9PJ

**020 8883 0033**

*Properties urgently required - now is the time to sell!*

**Estate Agents and Valuers. Established 1767**

**Hotblack Dixon & Co. Estate Agents**

Our success rate in N2 is very high indeed, obviously in Hampstead Garden Suburb but also in East Finchley. We have often obtained better prices from our base in the Suburb, so

**Please call us for a free valuation or try us if you are on a multiple agency basis**

17 Market Place, Hampstead Garden Suburb  
London NW11 6JY

**020 8458 8411**

• Visit your community newspaper on-line at [www.the-archer.co.uk](http://www.the-archer.co.uk) •





## THE ARCHER

PO Box 3699  
LONDON N2 8JA

WWW.THE-ARCHER.CO.UK

e-mail: THE-ARCHER  
@LINEONE.NET

**Voicemail & Fax:**

Editorial/enquiries: -  
**08717 33 44 65**

Advertising/finance: -  
**08717 33 45 28**

PUBLISHED BY

*East Finchley  
Newspapers*

CHAIR

*Kevin Finn*

COPY EDITOR

*John Lawrence*

EDITORIAL TEAM

*Diana Cormack  
Daphne Chamberlain  
David Hobbs*

SUB EDITORS

*Ann Bronkhorst  
Wendy Devine  
Pam Kent*

PRODUCTION EDITOR

*Alison Roberts*

PICTURE EDITOR

*Sarah Clackson*

FINANCE &

ADVERTISING

*John Dearing*

DISTRIBUTION

*Toni Morgan  
Pam Kent*

PRINTED BY

*Sharman & Co Ltd*

*Thank you to The Bald  
Faced Stag for providing  
us with a meeting place.*

*THE ARCHER team wishes  
to thank all the generous  
people who give up their  
spare time, in all weather,  
to deliver the paper for us.*

### Your contributions

If you have a story for us, please contact us at the above address.

Comments to THE ARCHER may be published unless clearly marked 'Not for publication' within the text.

### Copy deadlines 2008

May issue: 11 April

June issue: 16 May

July issue: 13 June

## USEFUL TELEPHONE NUMBERS

### Councils

#### Barnet Council:

Admin/Town Hall 020 8359 2000  
Council Tax 020 8359 2608  
Recycling & refuse 020 8359 4600  
Primary Care Trust 020 8201 4700  
Benefits Agency 020 8258 6500  
Employment Service 020 8258 3900  
Haringey Council 020 8489 0000

### Leisure

Alexandra Palace 020 8365 2121  
East Finchley Library 020 8359 3815  
Muswell Hill Odeon 0870 505 0007  
Phoenix Cinema 020 8444 6789  
Warner Cinema 020 8446 9933

### Transport

BR Enquiries 0845 7484950  
City Airport 020 7646 0088  
London Transport 020 7222 1234  
National Express 08705 808080  
Heathrow Airport 0870 000 0123

### Hospitals

Barnet General 0845 111 4000  
Coppetts Wood 020 8883 9792  
Finchley Memorial 020 8349 7500  
Oak Lane Clinic 020 8346 9343  
Royal Free 020 7794 0500  
St Luke's 020 8219 1800  
Whittington 020 7272 3070

### Health Advice

AIDSline 020 8363 2141  
Alcoholics Anonymous 0845 7697555  
Barnet MENCAP 020 8203 6688  
Cancer Support 020 8202 2211  
Carers' Line 0808 808 7777  
Drinkline 0800 917 8282  
Drugs Helpline 0800 776600  
Health Info Service 0800 665544  
MIND 020 8343 5700

### OAP's Advice

Barnet Age Concern 020 8346 3511  
Contact (N2) 020 8444 1162

Help the Aged 0808 800 6565

### Crime

Emergency 999  
Finchley Police 020 8442 1212  
Mus. Hill Police Stn. 020 8345 2148  
CrimeStoppers 0800 555111  
Victim Support 0845 303 0900  
East Finchley Safer Neighbourhood Team 020 7161 9014

### Help & Advice

Childline 0800 1111  
Disability Info Service 020 8446 6935  
E.F. Advice Service 020 8444 6265  
Gingerbread 020 8445 4227  
National Debt Line 0808 808 4000  
NSPCC 0800 800500  
Rape & Sexual Abuse 020 8683 3300  
Relate 020 8447 8101  
RSPCA Inspector 08705 555 999  
Samaritans 08457 909090  
Refuge Crisis Line 0870 599 5443



42 Church Lane, London N2 8DT.  
Tel/Fax: 020 8444 6265

### General Advice.

Monday to Friday: 10am - 12.30pm and 1.30pm - 4pm.

### Legal Advice.

Tuesdays: 7pm - 8pm.

### Councillors' Surgery.

Saturdays: 10am - 11.30am

### Community Services

❖ Credit Union, Green Man Community Centre 020 8883 4916  
❖ Careers advice, Green Man, Community Centre 020 8883 4916  
❖ Toy library, Muswell Hill 020 8444 0244/ 8489 8774

## Charity honours Miriam

National bone marrow cancer charity Myeloma UK has honoured the commitment and dedication of Miriam Hyman, who was killed in the London bombings of 7 July 2005 at the age of 31. The charity has created a myeloma research grant in her name and a plaque has been unveiled at the University of Manchester.

Miriam, of Holyoake Walk, N2, was a much-loved supporter of Myeloma UK, who first got involved with the charity back in 1999. At the time she was part of a group who came together to help fund research in order to support one of their friends whose mother had been diagnosed with myeloma a year earlier. She went on to help organise several large fundraising events including a dinner at the Langham Hilton, a comedy night and an evening at London's Jazz Café.

The £40,000 Miriam Hyman Research Grant has been awarded to Professor Alexander Molassiotis at the University of Manchester to study the support needs and quality of life of patients with myeloma, and the degree to which these needs are met. Myeloma is a complex and challenging cancer of the bone marrow, which is currently incurable, but is treatable.

Eric Low, Chief Executive

of Myeloma UK, said: "We are pleased to be able to award this grant in Miriam's name as she was incredibly dedicated to the cause and committed to ensuring the very best standards of treatment and care for patients through her fundraising efforts."

## Football returns to Stanley Field

Organised football returns to Stanley Field on Saturday 12 April, with teams competing for the Stanley Road Challenge Cup.

Play begins at 12 noon. This is a community event so players of any level are welcome. Anyone interested in playing, helping with preparations and/or publicity, or contributing ideas, should contact Roger Chapman on 020 8444 4652.

## Homeless man charged for breaking ASBO

By John Dearing

**William Buck, 42, better known in East Finchley as 'Billy', has been sleeping rough at locations around the centre of N2 for the last few months. Last month, he was arrested outside the Iceland store in the High Road.**

He appeared at Hendon Magistrates court on Saturday 15 March and was convicted of breaching the conditions of his ASBO, namely not to urinate in public or consume alcohol inside a defined area (the area bordered by the M25). He was fined £100 or to serve a day in prison.

Inspector Simon Roberts of Barnet Police said: "Our continued targeting of those involved in anti social behaviour has led to this conviction. We will continue to enforce these measures to deal with all types of anti social behaviour in a rigorous approach."

## Planning Applications

### Barnet Council

59 Abbots Gardens, N2

Single storey rear extension and raised decking.

96 Brim Hill, N2

Part two-storey, part first-floor side extension including conversion of existing garage to a habitable room. Loft conversion incorporating rear dormer window and rear and front roof lights.

Brookland Junior School, Hill Top, NW11

Installation of cycle parking facilities.

48 Church Lane, N2

Proposed first-floor rear extension.

241 Creighton Avenue, N2

Demolition of existing garage. Building of new garage to front and two-storey extension to rear with rear dormer at first floor level.

93 East End Road, N2

Loft conversion and roof extension to include rear dormer window.

East Finchley Cemetery Lower Chapel, East End Road, N2

Replacement of existing roof slates to both pitches including the replacement of felt, battens and provision of insulation. No increase in height of the roof. (Listed building consent.)

348 Long Lane, N2

Demolition of existing conservatory and erection of single storey extension.

36A Sedgemere Avenue, N2

Alterations to roof including insertion of roof lights and rear

dormer windows to create a self-contained flat in the loft.

### Haringey Council

Adjacent Aylmer Court, Aylmer Road N2

Six-bedroom single storey dwelling house with rooms at basement level.

22 Aylmer Road N2

Conversion of property from single occupancy house to a three-bed flat, a two-bed flat, a one-bed flat and two individual bedsits.

31 Aylmer Road N2

Two-storey side and single storey rear extension.

25 Bancroft Avenue N2

First-floor rear extension and front, side and rear dormer windows.

150 Fortis Green N10

Demolition of existing building and erection of part four / part five-storey building comprising six three-bed and three two-bed flats with nine car parking spaces, bicycle store, refuse space and private amenity space.

Land at Kenwood, Hampstead Lane NW3

Change of use of part of the grounds for weekend open air concerts, including erection of a stage compound and sound towers in the Pasture Ground and ancillary infrastructure for a temporary period of 9.5 weeks over the summer months

19 Twyford Avenue N2

Single storey rear conservatory extension.

65 Twyford Avenue N2

Single storey side extension.

## OSTEOPATHY

at

## The Twyford Practice

*Osteopathic consultation and treatments  
in Fortis Green, N2.*

**Robin Kiashek,  
Osteopath and Naturopath,  
Bsc (Hons), Ost Med.,  
N.D., M.R.N.**

**For appointments:  
please phone 020 8815 0979**

**or visit:**

**[www.robinkiashek.co.uk](http://www.robinkiashek.co.uk)**

**for further information**





Esther Copperman (left). Photograph courtesy Harriet Copperman

## Woman dies after accident

**A woman pedestrian has died after being involved in an accident with a motorcycle at the junction of the High Road and Fortis Green.**

Esther Copperman, 93, from East Finchley, was in collision with a red Ducati motorcycle as she crossed the road at about 11.50am on 13 March gave her head injury as the cause of her death.

She was taken to the Royal Free Hospital with a head injury and was discharged six days later but sadly died at home the following day. A post mortem held on 13 March gave her head injury as the cause of her death.

The male driver of the motorcycle, aged 37, received minor injuries in

the accident and did not require hospital treatment. Anyone who witnessed the collision is asked to call the collision investigation unit at Alpert on 020 8998 5319.

## Contracts exchanged on the future of Park House

By Janet Maitland

**Another chapter in the controversial history of Park House has begun. Contracts were exchanged in February between Barnet Council and Cathedral (East Finchley) LTD for the purchase of the site opposite East Finchley tube station.**

The freehold includes the narrow strip of land between the boundary of the site and the boundary of Cherry Tree Wood, which currently provides pedestrian access from the High Road to Brompton Grove.

Barnet first agreed to offer Park House for sale back in January 2004. In 2005, local protests led to the withdrawing

of proposals from a developer to build a superstore with parking on the site, including adjoining land up to Baronsmere Road.

At one point it looked as if Hampstead Garden Suburb Institute would buy Park House but they were not able to proceed with the sale and vacated the building when their temporary lease expired last August. In September, Barnet agreed to accept the highest offer on the site, putting it on the market through Savills.

### Mixed use scheme likely

"There are as yet no firm plans for development," said Catharine Starling, from Cathedral. "These are very early days. As soon as we do have plans, there will be a consultation with

local people."

The marketing pack for Park House includes some planning guidance for prospective buyers. "This is not binding, but prevents completely unrealistic schemes from being proposed to the Local Planning Authority," said Geoff Collins from Barnet Property Services.

The guidance states that the planners would be receptive to a "mixed use scheme, which could include residential, offices, educational or medical uses", and that a "wholly residential scheme is likely to be deemed unacceptable due to the loss of employment". It also says that a "wholesale retail use on the site is considered unlikely".

## Who felt the earthquake?

**When last month's earthquake rocked Britain from Scotland to Southampton, East Finchley did not escape. Though most of us either slept through it or were not in its path, THE ARCHER has heard of some locals who felt their homes shake.**

So far, we have had reports from the Church Lane area of East End Road and from Cherry Tree Road. Let us know if you felt anything, and we will investigate the lie of the land.

## A hawk called Barbara

By Daphne Chamberlain

**There have been recent reports of an eagle in Highgate Wood, but a visiting Zoo representative said, "That's no eagle. It's a juvenile American Harris hawk." It was an easy mistake to make, though, as the 10 month-old hawk has a four-foot wingspan and could polish off a crow.**

This particular hawk is called Barbara, and she belongs to a local man called Phil. By the time you read this, she may be back in her home aviary with fellow hawk Henry. Phil certainly hopes so.

He had only just bought Barbara when, at the end of October, she refused to come down from a tree in Coppetts Wood. Phil's hawk-breeder friends advised leaving her there for a few hours, but when he returned at 5am with some tempting chicken, Barbara had flown. It may be that she was frightened away by boys with fireworks.

Some time later he had a call from the Independent Bird Register, telling him about the bird in Highgate Wood. The same bird had been regularly visiting Queenswood allotments, and allotment owners were advised

not to put rat poison down.

"It certainly is Barbara," Phil told us, "But she hasn't yet come to hand."

Phil, who sometimes shows hawks to the children at his wife's school in Whetstone, hopes that the lure of chicken which she has not caught herself will eventually do the trick.

There was one question I had to ask Phil. Why is she called Barbara? If you want the answer, just compare a hawk's profile with that of a very famous singing star.

## How do buses shape up?

By Daphne Chamberlain

**Transport for London has asked Chris Baker of West Haringey Buswatch to join an advisory panel on bus design. Chris asked East Finchley Buswatch if they had any ideas, and they came up with the following comments.**

### On the 263:

- 1) "Kamikaze" back seats are unsafe. Some of the group said they would rather stand up than sit there.
- 2) More seats are needed on the entry level, as many bus users are elderly and/or disabled.
- 3) There is a need for some kind of horizontal bar to hold, as well as the vertical ones.
- 4) One member thought there was not enough lower back support in the seats.

But the overall design of the 263 received a vote of confidence,

being considered much better than many other services.

### On the 143:

There is generally thought to be poor access to the bell.

### On the IBus system and Countdown:

A tender has recently gone out for Countdown 2. This new system will bring countdown signs up from 2,000 to 4,000, and will be used by controllers to regulate bus services.

### On the 603:

London Buses say that a new contract for route 603 will be

issued in January 2009. They say they will be consulting soon about possible changes to times for this route. Local Buswatch groups expect this will mean possible minor changes and not proposals to make it a regular all-day route. The groups are restating the arguments for an all-day route, which would serve the Royal Free Hospital.

If you would like to get involved with East Finchley Buswatch, contact Hazel Burnett on 020 8444 6824 or [hazel.burnett@freeuk.com](mailto:hazel.burnett@freeuk.com).

**EAST FINCHLEY ELECTRICAL**  
always lowering prices  
**For all your DIY needs as well as electrical**

**EIC LOCAL COUNCIL APPROVED CONTRACTOR & RETAILER**

For all your electrical needs in the home, we turn up on time, guarantee our work and are unbeatable value.

115 High Road London N2  
Tel: 020 8444 5630 or email [sales@ef-elec.co.uk](mailto:sales@ef-elec.co.uk)

**VICTORY AUTO SERVICES**

**Air-Conditioning - Recharge & Servicing**

Mechanical repairs, tyres, bodywork, clutches, exhausts  
MOTs by appointment

109 Fortis Green East Finchley London N2 9HR  
Tel: 020 8883 9707 / 0023 Fax: 020 8482 9179

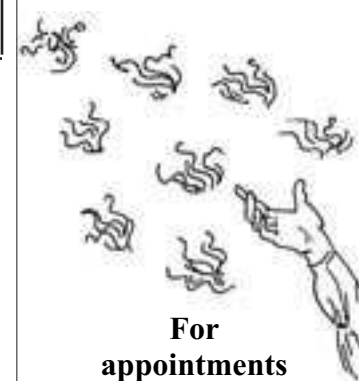
**Nicky Sharp Osteopathy**  
Registered Osteopaths  
**Cranial and Structural Osteopathy and Acupuncture**  
**Most Major Insurers Accepted**

For consultations and appointments:  
**Telephone: 020 8815 9433**

260 East End Road [www.nickysharposteopathy.co.uk](http://www.nickysharposteopathy.co.uk)  
London N2 8AU e-mail: [info@nickysharposteopathy.co.uk](mailto:info@nickysharposteopathy.co.uk)

## HEALING

**Kathryn Scorza**  
Registered Spiritual Healer



For appointments in East Finchley please call  
**07703 404 839**  
or email

[kathryn@spqrlondon.co.uk](mailto:kathryn@spqrlondon.co.uk)

**Josephines**  
EXPERTS IN CREATIVE FLORAL DESIGN

**For the freshest flowers around**  
**Pop in and choose from the largest selection in the area**  
**No excuses - to miss that special occasion**

[www.josephinesflowers.co.uk](http://www.josephinesflowers.co.uk) Tel: 020 8444 9569/020 8883 3598 60 High Rd, East Finchley London N2 9PN





Cherry Tree Wood photo by David Tupman

## New life for Cherry Tree Wood

**THE ARCHER has seen a confidential policy options paper, circulating among key opinion formers in the borough, about proposals for the modernisation of Cherry Tree Wood.**

Various new facilities are being considered but the frontrunner is to create "London's first museum dedicated to the history of local woods, together with an exciting multimedia amenity called the East Finchley Experience." Income from this public-private partnership and the Lottery would pay for the refurbishment of Cherry Tree Wood.

Work could start in the summer of 2008 with three key features. First, the wood would need to be closed for some years to allow essential works to be undertaken with full regard to health and safety. The paper's author was rightly concerned that local opinion would need "to be handled with great care" and suggested that "three large TV screens should be erected at each of the entrances showing seasonal images of the woods together with assorted sound effects of birdsong, barking dogs and children playing, thus reminding residents of what they were missing."

### Festival to relocate

A top firm of media relations consultants would advise

the developers of appropriate opinion forming strategies, especially with the possible backlash regarding the relocation of the annual East Finchley Community Festival to Cricklewood.

Secondly, as most of the new museum building would be below ground it is envisaged that one in three of the current stock of trees would need to be felled in order to allow sustainable air ducts to ventilate the galleries. To allay local concerns, "top quality, life-size, plastic replica tree specimens would be installed for ventilation and sourced from carbon neutral providers" which the paper says "are indistinguishable from the real thing but have the advantage of being maintenance free and no longer a burden on council

tax payers."

### Celebrating East Finchley

Thirdly, the establishment of the East Finchley Experience as part of the new museum will allow local people to record their memories and anecdotes about life in N2. Initial thinking is that interactive media screens would help celebrate "local bus services which ran every five minutes to North Finchley", "usable public toilets on East End Road" and "the library which opened during lunchtime".

The paper concludes that these, and a late proposal for a 100-foot wind turbine to power the new museum and to be located on the Tube station's south plinth, will be considered as priority business on 1 April.

*Continued on page 9.*

## Star of stage and screen

**Twenty-two year old actor Ryan Sampson hails from Yorkshire but is now living on the High Road, East Finchley. Although he has had no formal training, Ryan is making his mark in the acting profession, having appeared alongside Nicholas Lyndhurst in the BBC comedy *After You've Gone*. He has also been in *Heartbeat*, *Holby City* and *Wire in the Blood*.**

With more television work in the pipeline, Ryan is still continuing with his stage career, which now includes two plays, *DNA* and *The Miracle* at the

prestigious National Theatre. Previous theatre work includes performing at the Royal Court, Southwark Playhouse and the Sheffield Crucible.

In April Ryan can be seen in what many actors now count as a great accolade when he appears in two episodes of *Doctor Who*.

## Tenants wanted for desirable new homes

By Ann Bronkhorst

**With all the house-building in the south-east it's no surprise to find some new dwellings just north of Creighton Avenue. These, however, are state-of-the-art roosting and nest boxes put up by the Friends of Coldfall Wood. It's hoped that bats and birds will move in, rear their young and add to the woodland life.**

Or, in some cases, take away from it. Controversially, two of the new boxes are designed for owls and kestrels, one for each. A healthy wood needs natural predators and at present Coldfall is overpopulated by rats and pigeons. It's hoped that a few owl and kestrel families will help to right the balance.

Since last autumn, bird life in Coldfall has thrived, with reports of many sightings of wrens, robins and wagtails around the stream and pools. The dead hedges and the settled, bramble-covered log piles are providing welcome shelter and nest sites.

The pools have not been vandalised lately and the newly-planted reeds are flourishing. There's at least one resident frog and more to follow, no doubt, as the frogspawn becomes tadpoles. Though it may be tempting to add a

water plant or two, or some creatures from a garden pond, Haringey Conservation Officer Ian Holt asks us to leave well alone, as the wrong plants or organisms might multiply or bring disease.

### School gets involved

Gradually the word is spreading about the wood and its regeneration. Now Coldfall Primary School, on the eastern side of the wood, is taking an interest in its neighbour. They have an eco action group and are planning their own clean-up of the wood, as well as a nature wall in the woodland area of the school grounds. Come on, Fortismere, it's your turn now!

Anyone with ideas or resources for helping with the regeneration of Coldfall Wood can contact the Friends at [info@coldfallwood.info](mailto:info@coldfallwood.info) or at the Vampires Clubhouse at 7.30pm on the first Tuesday of each month.



A select estate in woodland surroundings. Photo by Ann Bronkhorst

## Feathering your nest

**East Finchley estate agents Prickett & Ellis marked National Nest Box week by providing some new homes for wildlife at Fortis Green Reservoir allotments.**

The selection of exciting new residences for the local bat and bird populations include traditional wooden bat boxes, chalet-style boxes for small birds such as blue tits, and a spacious ranch-style abode for barn owls.

Anyone who would like to provide refuge for wild-

life nest boxes can buy them online from the RSPB at <http://shopping.rspb.org.uk>.

## Major patron

**Major Paddy O'Brien has become a patron of The Finchley Society in succession to the late comedian Spike Milligan. Major O'Brien and his wife Una are Finchley residents.**

From 2003 to 2006, he was Representative Deputy Lieutenant for Barnet, representing the Queen and arranging royal visits.

The society said he will not be just a figurehead but will also attend meetings of the trustees where his wide experience in management and training will provide valuable support.

**All Saints' Church,  
Durham Road, East Finchley  
Church of England**

**Sunday masses at 8.00 a.m. and 10.00 a.m.  
Weekday masses at 10.00 a.m.  
Prayer requests are gladly accepted.**

**The Parish has a flourishing social life.  
Contact the Vicar, Fr Christopher Hardy,  
on 020 8883 9315.**

**All Saints' also has a strong musical tradition and an enthusiastic choir of both adults and children.  
Experienced singers are always welcome.  
Contact Geoffrey Hanson on 020 8444 9214.  
<http://www.allsaints-eastfinchley.org.uk>**

**A friendly welcome awaits you**

**EAST FINCHLEY METHODIST CHURCH**

197 High Road, London N2 (opp. Creighton Ave.)

tel: 0208 346 1700

[www.eastfinchleymethodist.org.uk](http://www.eastfinchleymethodist.org.uk)

**Family service and Junior Church  
Every Sunday at 10.30 a.m.**

**Worship Music Social events Youth Club Wheelchair friendly  
e-mail: [info@eastfinchleymethodist.org.uk](mailto:info@eastfinchleymethodist.org.uk) Room hire tel: 0208 444 4453**





Izzy Engler raised 100 signatures on a petition to slow down traffic in Church Lane. Photo by John Lawrence

## Izzy ignites campaign for safer Church Lane

By John Lawrence

**When a car smashed into a wall opposite her house in Church Lane (*THE ARCHER*, February 2008), nine-year-old Izzy Engler decided enough was enough.**

The Garden Suburb Junior School pupil was tired of cars speeding past her house and putting pedestrians at risk so she started a petition. Signatures collected from local shops and cafés totalled more than 100.

Izzy's petition, along with calls from other residents in the road, helped to secure an agreement from Barnet Council's Finchley and Golders Green area committee to bring in traffic-calming measures.

The council will introduce flashing 'slow' signs activated by vehicles, new 'one way' and 'concealed junction' signs, and new junction signs at Long Lane and King Street.

Izzy's petition called for a 20mph speed limit in the road and her neighbours still hope the council will eventually agree to lower the limit.

Izzy said: "Every day a lot of children walk to school down this road. It does need a lower speed limit but I'd be pleased if these new signs start to make it safer for them."

The crash in January demolished walls and fences after a Mini Cooper went out of control as it passed the junction with King Street at 8.30pm. Shocked

## Survey seeks views on Barnet Online

How easy is it to find what you're looking for on Barnet Online, the council's website? Your views are being invited to help improve the usability of the site.

To take part in the survey, visit [www.barnet.gov.uk/survey](http://www.barnet.gov.uk/survey). If you would like the opportunity to attend future usability testing workshops, contact Jonathan Tunde-Wright on 020 8359 7559.

## Spring clean the green way

By Lucy Heaton

**Do you need to have a bit of a spring clean? As spring has sprung, now is the perfect time to freshen up your home, including getting rid of any clutter you don't need. But what to do with all those unwanted items?**

Some can be recycled, some can be sold on eBay and some can be given to charity shops. Then there's other stuff hanging around; too good to throw away, not quite good enough to sell (or you can't be bothered).

Freecycling is the answer. Freecycle Barnet is an internet group where you can list a brief description of your item and people who are interested can come and take it off your hands.

You don't get money for it, but you do get the convenience of having it picked up and the satisfaction of knowing that it's going to a good home.

It's a greener way to clean, as stuff is reused and kept out of landfills. An added benefit is that those on low incomes can often find the things they need for free. Plus, you can always have a trawl through what other people have listed to see if anything takes your fancy. Don't go overboard, though, or you may find your freshly clutter-free house re-filled with new stuff, and be back to square one.

To start freecycling, go to [www.yahoo.com](http://www.yahoo.com), create an account and go to the 'Groups' section. Search for 'Freecycle Barnet' and the link will appear. A top tip: when listing an item, you must do so through the home page Message Maker link or it won't be accepted.

## Forum returns to Finchley

By Daphne Chamberlain

**After its previous meeting in Cricklewood, last month's Finchley and Golders Green Forum took place in Trinity Church Hall, North Finchley.**

### Church Lane

#### traffic management

A request had been made at the previous Forum to make Church Lane, Trinity Road, Long Lane, Leslie Road and Leopold Road a 20mph zone. Full action details were not yet available, but a Barnet spokesperson told *THE ARCHER* later that The Finchley and Golders Green Area Environment Sub-Committee had just agreed that the council would investigate four potential options for Church Lane.

The spokesperson said that this action had come about following a combination of factors, including an incident in January and a petition raised by local residents, as well as representations from local ward councillors.

#### Facilities for partially sighted in libraries

There was a complaint that Barnet library provision for the partially sighted was very poor. The speaker said that stock was difficult to find because it was not arranged systematically, and also asked for the provision of a magnifying glass, as is

done in other authorities. This question is to be referred to the relevant department.

At present, Barnet libraries stock large print books, music CDs and spoken word cassettes and CDs. The spoken word cassettes and CDs have a concessionary rate of no charge.

#### LED streetlights

It was asked whether it was true that Barnet would be a pilot user of LED streetlights, which are said to have a 20 year life-span, no dark patches and no mercury, and transmit far less pollution. The Highways Department said this was a very new development, and he was contacting Transport for London for more details.

#### Future Forums

Two people asked why full details of the next Forum meeting, including the venue, were no longer given out in the meeting.

### The Archer needs a volunteer distributor for Brim Hill

*Distribution takes place once a month. A typical round takes 30-45 mins to deliver. For details contact 020 8883 0433 or [the-archer@lineone.net](mailto:the-archer@lineone.net)*

## GEMINI PHOTOGRAPHIC

58, High Road, East Finchley N2 9PN. 020 8883 6152

### New Snap Lab in store.

**Print 6x4 - 5x7 Photos from your memory card, Bluetooth or USB flash drive!!!**

Cameras, Lenses, Tripods, Binoculars, Telescopes, Projectors, Printers, Frames, Albums, Bags, Cases, Memory cards, Films, Flash drives, Card readers.

**Transfer your home movies to DVD, VHS. Repairs to most film and digital cameras.**

## EAST FINCHLEY BEST KEBAB

OPEN 7 DAYS A WEEK

MON-THURS: 11.30AM-12.30AM

FRI-SAT: 11.30AM - 1.00AM

SUNDAY 1PM-12 MIDNIGHT

**FREE HOME DELIVERY**

MINIMUM ORDER - £8 (WITHIN A 3 MILE RADIUS)

MONDAY-SATURDAY: 5PM - 10.45PM - NOT SUNDAY

TELEPHONE ORDERS WELCOME - READY FOR COLLECTION IN 10 MINUTES

150 HIGH ROAD, EAST FINCHLEY N2 9ED

**020 8365 2289**



- Vintage, Retro and New Fashion
- Accessories, Art, Gifts and Cards

46 High Road, East Finchley, London N2 9PJ  
020 8883 1117 [www.lazooli.co.uk](http://www.lazooli.co.uk)

the  
cherry  
tree

Elegant and inspired gifts for all occasions

172, High Road, East Finchley N2 9AS Tel: 020 8883 4369

[info@thecherrytreeuk.co.uk](mailto:info@thecherrytreeuk.co.uk) [www.thecherrytreeuk.co.uk](http://www.thecherrytreeuk.co.uk)

**NOW OPEN ON SUNDAYS**  
FROM 10.30 TILL 1PM

Cards &  
Wrapping Paper

VIP Bags

Designers Guild

Lip Lingerie

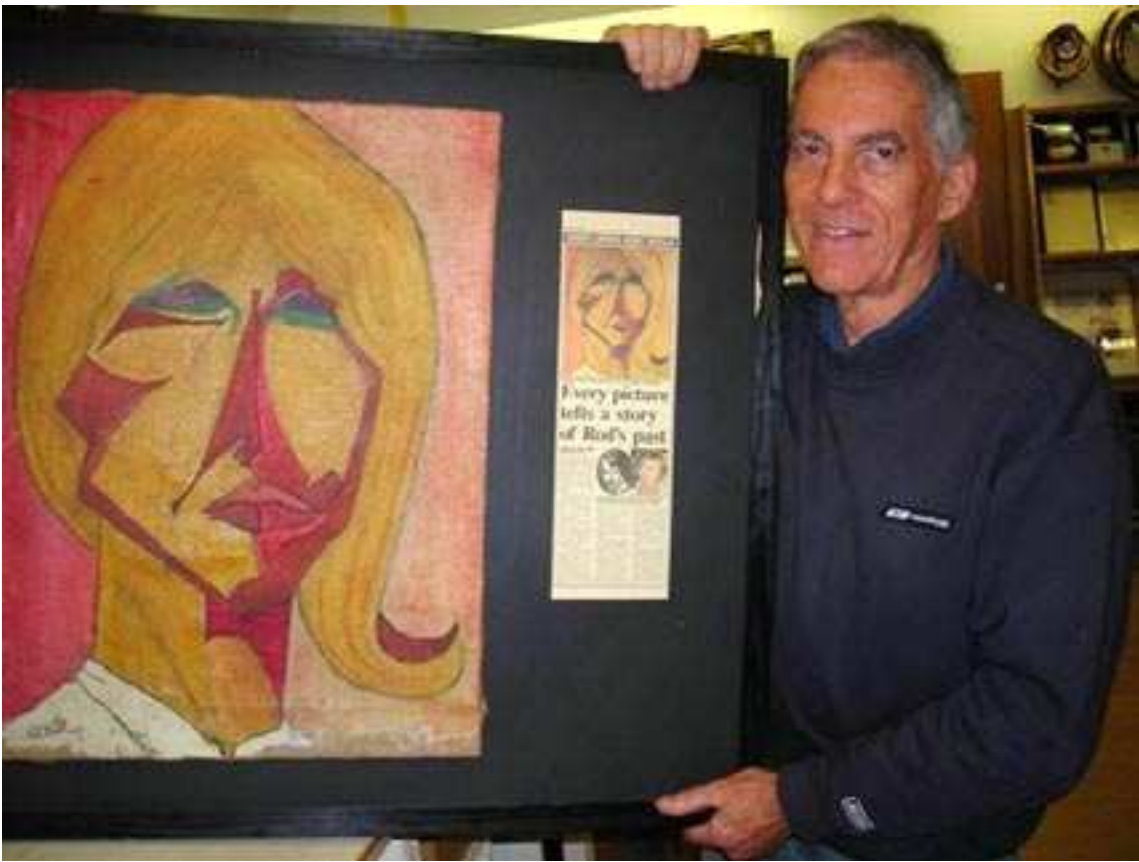
Hope & Greenwood  
Organic Chocolates

LSA Glassware

True Grace Candles

Susan Suell Jewellery





Tom Jones with a portrait by Rod Stewart

## You're in my art

By Daphne Chamberlain

**Rod Stewart, Mick Jagger and Tom Jones all lived in East Finchley in the early 1960s.**

Mick lived over a shop, and Rod worked for Sudbury-Jones picture framers.

And Tom Jones? "He was co-owner of the picture framers. His name and the singer's are identical. It's not unusual!" says Brian Timms, our Australian correspondent.

But did Rod leave a legacy? Tom Jones, an old schoolmate of Brian's, showed me a portrait, signed by R. Stuart (note the Scottish spelling) in 1963.

Sudbury-Jones, the picture-framers, were at 156b High Road, at the top of Huntingdon Mews.

Rod worked there, on and off, for about a year in his early 20s, for around £10 a week. His father kept a tobacconist's shop at the foot of North Hill.

### Memories of Rod

Joyce Galione, of Leslie Road, remembers him play-

ing football with her son, Paul, now another emigrant to Australia. Joyce herself used to work in Boots at Muswell Hill, and recalls in later years his sister bringing in photos of the family with Rod, taken in the US.

Back at the picture-framers, Tom Jones remembers him being ribbed by fellow-workers when he started singing in bars. "He was a cheerful sort of chap, though. He used to dance around, and sometimes got up on the table to sing. He used to do intervals on Long John Baldry's bill. I saw him perform on Eel Pie

Island."

It was an East Finchley syrup pud, though, that was the secret of Rod's success, served up by "Five by Five" Joe, the proprietor of the Manhattan Café (then opposite what is now Diploma Court). "Rod always had a double helping," says Tom Jones. "He loved his food."

But what about the painting? Tom thinks it could be a self-portrait in the style of the time. What do you think?

Tom Jones can now be found at the Picture Factory, 44-48 Birkbeck Road, North Finchley.

## Sign up for art

**Art courses run by Community Focus start their next term on 21 April and booking is now open.**

From Studio Photography to Drama for Radio, Portraiture to Photoshop, CF has a wide range of 12-week courses for beginners and more experienced artists alike. Other courses include Life Drawing, Creative Writing, Dance, Drama, Painting, Drumming, Watercolour, IT, Mixed Media Art and, new for CF, Textile Arts and Drawing from the Right Side of the Brain.

If you are interested in finding out more, visit the CF studios at artsdepot, North Finchley, on Monday - Friday from 10am - 5.30pm, or call Caitriona Dunnett on 020 8369 5483 or visit the CF website [www.communityfocus.co.uk](http://www.communityfocus.co.uk).

This Easter a disabled artist will be running a series of creative workshops open to members of the public of all ages and abilities. Participants will see their work installed in the CF entrance gallery on level 2 at artsdepot. Workshops will take place from the week beginning 14 April. To book a space on an Easter workshop call 020 8369 5483.

## Through the streets of London

By John Lawrence

**London is a different city when you ditch public transport and put one foot in front of the other. Walking through town in the company of hundreds of other people makes the experience even more special.**

More than 1,400 fundraisers took part in the annual Big Fun Walk from East Finchley to Westminster on Sunday 9 March and enjoyed plenty of hidden treasures and surprises along the way.

### Parks and panoramas

A snake of walkers stretched through London's loveliest parks, on the way getting a glimpse of Witanhurst House in Highgate, London's largest private residence after Buckingham Palace.

Then it was past the dog walkers of Parliament Hill, through Belsize Park and on to the sweeping panorama of London from atop Primrose Hill.

As we passed their enclosures at London Zoo, two fierce-looking warthogs turned to face us. I'm sure they would have charged us if they could. Next door, a stripey-legged okapi passively munched its lunch and paid us no heed

whatsoever.

Past the halfway point, walkers rested their weary feet at the bandstand in Regent's Park and enjoyed the free sandwiches and drinks handed out by the walk's organisers. A Japanese couple were the only ones boating on the lake in the perishing wind.

Then it was the final push past a busy Speakers' Corner in Hyde Park, down to the Mall and the finishing line at Westminster. With a steel band playing us in, we felt like we'd just run the Marathon.

It is hoped that this year's walk will top last year's total of £143,000. All funds support the fantastic work of the multi-faith North London Hospice, based in Whetstone.

Vivienne Bentley, one of the organising team, thanked everyone who had taken part and said the feedback from the day had been overwhelmingly positive.



Tea, biscuits and tired legs as the Big Fun walkers reach the finishing line at Westminster.. Photo by John Lawrence

## Billy Bunter reaches centenary

By Vikki Chalmers

**What is the connection between the Fat Owl of the Remove and East Finchley? For those who don't know, and I must admit I didn't, Billy Bunter's creator Frank Richards, real name Charles Hamilton, lived on the fringes of East Finchley during the Second World War.**

Bunter first appeared in *The Magnet* in 1908 and swiftly became a popular favourite with schoolboys and, more surprisingly, schoolgirls. When paper became scarce during World War Two, and there were cutbacks on papers and comics, Bunter became known to new generations of children through a succession of books. Indeed, many boys and girls of school age in the 1940s did not realise that Bunter had had a previous existence of some 30 years as the anti-hero of a popular comic.

Interestingly, the enthusiasm stirred in the breasts of most of these children did not wither and die as teenage years gave way to adulthood, and Bunter fan clubs are still thriving today, 100 years on.

Frank Richards, who was a very private, indeed reclusive,

est of the Bunter books were written, probably, in this area of London.

### William's creator is next in line

Frank Richards' biographer is Mary Cadogan, author of some 17 books, and I am indebted to the Belsize Park Library Supporters' Group for inviting me to attend a talk given by Mary recently. She has written 17 books and has chosen for her next biography the writer Richmal Crompton, creator of another schoolboy anti-hero, Just William.

Bunter pre-dated William by about 10 years and, of course, both went on to be the subject of extremely successful broadcast series. Sadly for William, however, he had no known connection with East Finchley!



man lived in Midholm and Westholm, off Falloden Way, during the war years, having had to leave Margate because of the likely risk of invasion along that part of the coast. The earli-







Anne-Marie's first children's book has been widely praised.  
Photograph courtesy Shaw Conway

## The next JK Rowling?

By Janet Maitland

A teacher from East Finchley, who wrote a children's book in her spare time, was recently short-listed for a competition to find the next JK Rowling. Anne-Marie Conway, 42, beat off competition from more than 2,000 entries to make it onto a shortlist of five for The Times / Chickenhouse Children's Fiction Competition.

"We believe that great work for children is important and life changing: our short list proved it," said Barry Cunningham, managing director of Chickenhouse, the company he set up after discovering JK Rowling. Although Anne-Marie didn't win the competition, she is optimistic. "I hope someone spots the book and takes a chance and publishes it," she said.

Anne-Marie wrote her book in between working as a teacher at Northside School in North Finchley, running the Barnet-based children's drama group Full Circle, and looking after her sons aged four and six. "I

just stopped watching TV," said Anne-Marie, who took two years to write the book.

*The Secret Life of Gemma Jones* began as a simple story about a children's drama group. But gradually the drama group became just the backdrop to a dark tale of a schoolgirl whose older sister has gone missing. "Once I started it, the story took on a life of its own," said Ann-Marie, whose only previous writing experience is producing sketches for Full Circle. The Times described the book as a "heart-warming modern day story of fractured family life."

## Mystery of the hidden ring

By Jake Eiseman-Renyard

Behind the old keeper's hut in Cherry Tree Wood, a large slab of concrete with a metal ring was once visible. I suspect it dated back to World War Two and was a mooring ring for a barrage balloon.

The nearby Highgate Wood has a hut containing nature information and other material, including a ring that has been identified as a barrage balloon tether. It seems logical that Cherry Tree Wood, being an open space, would also have had a balloon guarding it from the east. The East End of London was particularly badly hit during the blitz and barrage balloons were set

up all over the country.

Unfortunately, I can no longer see the Cherry Tree ring, but I think it is buried under a log pile. Being unsure about the specific dates regarding the park's history, whether the ring was for a balloon and, if not, what it was used for, it would be interesting to hear from anybody through *THE ARCHER* if they know more about this.

## Marathon dad to raise money for Sense

Local dad Kevin Hallett, 43, is running in the Flora London Marathon on Sunday 13 April for the first time and raising money for UK deaf-blind charity Sense.

Kevin took up running as a serious sport just over 18 months ago and has so far completed five half marathons across the UK. Come rain or shine, he trains at least five times a week. He knows, however, that he will have to dig deep to face the physical and mental pain most of us only get to watch on TV.

Kevin said: "This is one of the most personal challenges I have yet to face. Crossing the finishing line and raising funds for Sense must surely be a win-win situation all round. With the support of my family, friends and local community I hope we can all make a difference."

Sense is the UK's largest organisation offering support to deaf-blind people and their families. Established in 1955 as a parents' support group, Sense now offers a range of services including advice, housing, education, and practical help to children and adults who are both deaf and blind.



Kevin Hallett is running his first London Marathon at 43

Support for Kevin's Marathon challenge could not be easier. You can make a donation directly to Sense by logging on to <http://justgiving.com/kevinhallett>.

## Spark a lifelong love of words

Parents of young children are being encouraged to take them to East Finchley Library, so they get the habit of listening to stories and reading books early in life.

The library, in common with others across Barnet, offers a wealth of ideas for helping babies and under-fives enjoy great stories and rhymes.

On Thursdays, it runs a Baby Rhymetime session for under-twos from 10.45-11.15am. These are popular sessions where babies and toddlers learn the fun of rhyme, rhythm and repetition.

### Pick up a pack

Children can become library members as soon as they're born. Parents and carers can claim free packs called Baby Bookstart, Bookstart Plus and My Bookstart Treasure Chest along with guidance material on how to use them.

Baby Bookstart packs are normally distributed by health visitors when babies are around 6-9 months, but are also available from the library. The pack consists of a canvas shoulder bag containing two board books, a nursery rhyme book as well as information for parents on sharing books and about Barnet's libraries.

Bookstart Plus packs are for toddlers aged between 18 and 30 months and consist of two books, drawing materials and a

set of bookplates to encourage children to build their own book collection. Vouchers for these packs are distributed by health visitors to encourage parents to collect the packs but a voucher is not essential and packs can be

collected without one.

For more information about Bookstart or any other reading initiatives for under-fives, call into East Finchley Library or visit [www.barnet.gov.uk/children-s-library-service](http://www.barnet.gov.uk/children-s-library-service).

## Did you know...?

- Money isn't made out of paper; it's made out of cotton. Before the 1950's it was made from hemp - the stem and leaves of a marijuana plant.
- On average, 12 newborns will be given to the wrong parents daily.

- Because metal was scarce, the Oscars given out during World War II were made of wood.

- Guinness Book of Records holds the record for being the book most often stolen from Public Libraries.

### Klages Plumbing & Heating Agency LTD.

CONTACT TELEPHONE No: 020 8346 7218 / 8636

## KLAGE

A NAME IN PLUMBING FOR OVER 40 YEARS

Judith Costa BSc DPodM

Chiropodist/Podiatrist

Available for home visits

Please call for an appointment

Tel: 0208 365 2393 Mobile: 07802 88 7919



## eastfinchleyclinic

Wendy Longworth & Associates physiotherapy practice offers a variety of treatments at the clinic, or off-site, in patients homes, nursing homes, private hospitals and other organisations.

- Back Pain
- Neck Pain
- Whiplash Injury
- Sciatica
- Sports Injury
- Frozen Shoulder
- Arthritis
- Tennis Elbow
- Sprain or Strain
- Rehabilitation
- Neurological
- Stroke

[www.eastfinchleyclinic.co.uk](http://www.eastfinchleyclinic.co.uk)

East Finchley Clinic  
2-3 Bedford Mews  
Bedford Road  
London N2 9DF

**020 8883 5888**  
FAX: 020 8444 8874

**M.HUNT LTD**  
**CAR BREAKERS**

**CARS + VANS**  
**4 CASH!**  
**WANTED**

Tel: 01442 258999  
or 01442 831215 evenings  
**07788 617911**

**mark neal photography**

Specialising in weddings. £900 for my three album package including pre-wedding shoot and all day coverage. Want a photographer that's really work for you? ... more details online.

**T** 0208 349 9387  
**M** 0794 837 2604  
**W** [www.marknealphotography.co.uk](http://www.marknealphotography.co.uk)  
**E** [info@marknealphotography.co.uk](mailto:info@marknealphotography.co.uk)





## Let's go and see a musical

Young Archer heard that a new production of the musical *Annie* was about to be staged at the East Finchley Youth Theatre by the Create Theatre School, with 15% of the ticket profits being donated to The Bobath Centre in East End Road.

Our three young critics - Alice, 10, Isobel, eight, and Grace, six - are all *Annie* experts (they've watched the film, sung-along to the music and got the curly red wig in their dressing-up box). So they took out their notebooks, sharpened their pencils and went to see the final dress rehearsal of the show.

Isobel was full of praise: "When I was in the changing room I thought how nervous they all must be. It was noisy as everyone chatted. I went into the empty theatre and waited. I liked the scenery. There is a good start. Annie has a beautiful voice. I like the bit when the orphans sing *It's a Hard Knock Life*. Miss Hannigan is a good actress. Mr Warbucks is very good at his lines. The little popcorn girl is sweet. Amazing ending."

Grace noticed that the costumes were fabulous. She thought Rooster and his girlfriend Lily were very funny and that Mr Warbucks's secretary looked very grown up in her costume. She spotted that this actress, and the girl playing Miss Hannigan, got to wear real high heel shoes.

Alice thought "all the children played their parts very well" and that the show was "as good as the film."

### Star interview

Backstage after the show, Isobel was lucky enough to interview Annie:

Isobel: "How long have you been practising?"

Annie: "Since Christmas."

Isobel: "How did you feel?"

Annie: "Nervous, scared, excited."

Isobel: "Was the spotlight shining in your eyes?"

Annie: "Yes, it was."

Isobel: "Was your head getting hot wearing the wig?"

Annie: "No."

Kevin Gillespie, Fundraising Manager at the Bobath Centre for Children with Cerebral Palsy, said: "We would like to thank Create Drama School for their fundraising efforts with *Annie*. It is really heartening to see local children supporting others who've had a less fortunate start in life."

Create Theatre School, run by three sisters who are all qualified performing arts professionals, offers a choice of classes in drama, singing or dancing, or a combination of all three. Classes start from £5 per week and are held every Saturday at Tudor School, Queen's Road, off Squires Lane, Finchley N3. For more information, please call Caroline Jackson on 020 8882 9009 or visit [www.create-theatreschool.co.uk](http://www.create-theatreschool.co.uk).



Even the youngest joined in. Photo by Diana Cormack

## Nursery children raise their voices to raise money

By Diana Cormack

Children at the Scribbles nursery in Hertford Road added their voices to the UK's biggest nursery rhyme singalong in February when they took part in the annual Chatterbox Challenge. Run by the children's communication charity I CAN, the object is to raise awareness and money to help youngsters with speech, language and communication difficulties. It is estimated that one in ten children in this country are affected in some way.

### Animal singalong

Schools and nurseries were asked to learn the words, rhymes and actions to songs, thus underlining the value of fostering speech and language skills through nursery rhyme repetition and sound patterns and highlighting the importance of communication. With an age range of six months to five years, children at Scribbles

are divided into groups with animal names. The youngest, Bush babies, Lemurs and Meerkats, joined together to sing *Bananas in Pyjamas* and *Twinkle, Twinkle Little Star*. The Koalas and Wombats performed *The Wheels on the Bus* and the eldest, the Aardvarks, sang *Old McDonald* dressed as farmyard creatures and providing appropriate animal noises.

Head of Equal Opportunities Rena Zenonos, who organised the event at the nursery, told *THE ARCHER* that children at Scribbles take part in a variety of fund raising activities such as last year's Children in Need, to which they contributed £305. At the time of writing contributions for the Chatterbox Challenge were still coming in.

## Waiting pays off in grand poetry prize

John Davies, who was councillor for East Finchley from 1982 to 1994, has won the Grand Poetry Prize in a competition run by the London-based *The Literary Review*.

The competition demanded strict use of rhyme and scansion in a work of under 24 lines on a set subject, in this case 'Waiting'.

Mr Davies chose as his theme a woman who worked

as a waitress during the day and then had to wait upon her family in the evening. Judges described his poem, below, as a 'deserving winner'.

During his time on Barnet Council, Mr Davies's regular

use of verse on local issues at council meetings caused the local press to dub him 'the Bard of Barnet'. He still lives in Manor Park Road and is retired from his job in the book publishing industry.

## They Also Serve

By John Davies

I'm waiting in a restaurant, hands upon my hips,  
Waiting for my orders and then waiting for my tips,  
Waiting to serve trifles and waiting to serve steak,  
Cups of tea, pints of beer and slices of fruit cake,  
Waiting for rare plaudits and for regular complaints,  
Waiting for proud parents to pretend their kids are saints,  
As they throw their rolls about and take things as they come,  
Waiting for old lechers who will try to pinch my bum,  
Waiting for affected ones to criticise our range,  
Waiting for the miserly to quarrel over change,  
Waiting for new customers, always on my toes,  
Waiting for my pay packet, waiting til we close.

I'm waiting now in our small flat, waiting by a chair,  
Waiting for my aged mum to stagger down the stair,  
Waiting for my children to gobble up their grub,  
Waiting for their father to come back from the pub,  
Waiting for a moment to put up these aching feet,  
And revel in EastEnders or Coronation Street,  
Waiting for the night-time and, when I clear the decks,  
Waiting to go up to bed, waiting for good sex,  
Waiting for the problems that God will surely send,  
Waiting for my old age, waiting for my end.  
Working mother, kitchenmaid, nurse and cook and wife,  
I am always waiting - and waiting is my life.

## Head teacher to step down

Maggie Driscoll, headteacher at Martin Primary School, has announced her intention to retire "to pursue a less hectic and exhausting life-style".

In a letter to parents, she said: "The ten years I have spent at Martin School have been a very happy time in my life, and I have valued being part of the vibrant community of East Finchley."

Chair of Governors, Helen Drake, said: "We are extremely fortunate that Maggie has been with us to oversee the amalgamation of Martin Infant and Nursery School with Martin Junior School. Her experience and dedication has meant that the transition from two schools to one has been a smooth and successful process."

Maggie will retire in the summer and the recruitment process has already begun to appoint a new headteacher for September 2008.



## Mind your language

Spelling should perhaps be the first lesson, judging by this advertisement for The Institute's language courses spotted outside its High Road premises.

### East Finchley Baptist Church

Just off the High Road in Creighton Avenue N2

Sunday Mornings at 10.30 am

For more information

please contact the Church Office

Tel: 8883 1544 (Minister: Simon Dyke)

Visitors always welcome





## Super success for Supernanny blogger

East Finchley mum Jo Rynhold is a star of the internet after her blog became a hit on a popular parenting website. Jo has seen her blog become the most popular one on [www.supernanny.co.uk](http://www.supernanny.co.uk) and it all happened within days of her first posting last October.

"Jo's blog is clearly one which other mothers - and fathers - can relate to," said the editor of [Supernanny.co.uk](http://www.supernanny.co.uk), Sarah Ebner, who also lives in East Finchley. "She writes brilliantly, and her blog gives a real flavour of what it's like to be a stay-at-home mum with kids of different ages. She's also very funny, but serious when she needs to be."

Jo used to be marketing manager for the Science Museum. She now writes on the website (the official site of the Supernanny TV show) about home life with her three sons aged six, four and two, and her husband Avi.

Her postings have covered topics from how she sees the park as her office to how she foiled some local robbers who were trying to steal children's buggies from outside her house.

"I've been surprised by how much I enjoy writing this, it's a real creative outlet," says Jo, 34. "And I'm really pleased with the reaction it's got."



Supernanny blogger Jo Rynhold with her family. Photograph courtesy of Sarah Ebner

## Bravo for brevity

Recently, we put out a call for budding writers to submit a short story using 50 words or fewer. Here are some of the excellent tiny tales we've received.

### A Shot Within A Shooting

By Gene Lotti

Suddenly, the man pointing the gun at Ron pulled the trigger. BANG!

Instantly, Ron fell to the ground and lay motionless. "All right. Cut!" said the film director to the two actors. "You can get up now Ron ... Ron?" Suddenly, the film director's eyes widened in horror.

### Brief Encounter

By David Tupman

Joyce was outside the station gazing at Archie on his plinth. "What a fine specimen he is for 68," she sighed quietly to herself.

"Want a lift home, dear?" called her illegally parked neighbour. "Jump in and fasten your seatbelt."

"Oh goodness!" cried Joyce. "I haven't brought one with me."

### A Shark's Tale

By John Boyd

It was a balmy tropics morning. The swimmer rolled onto his stomach, his limbs moving gracefully, powerfully.

Thirty feet below the great white shark rolled onto his back. His tail moving gracefully, powerfully. Ascending.

As each saw the other, their hearts raced, but only the shark grinned.

### The Pen Box

By Lois Lawrence

A girl found a box in her attic. Inside were loads of pens in different colours. There was red, yellow, green, blue, orange, violet, brown, black, bronze and gold.

She liked them all, especially the black. So she chose that one and used it to write this story for you.

### Long Story

By Andrew Tunnicliffe

A woman planted a tree. Her son nurtured it. His daughter loved it. Her son climbed it. His daughter danced around it. Her son saved it from disease. His daughter sheltered under it. This woman had no children.

The next owner disliked trees. He chopped it down and laid concrete.

### Elsewhere in the universe

By Phin Foster

The stricken spaceship's captain addressed his crew: "Our engines have failed, our shields are down and our oxygen's low. If we don't move, we'll be sucked to our deaths in the nearest sun."

The chief engineer radioed in: "All fixed now, sir."

"Oh," said the captain. "Carry on, everyone."

Thanks to everyone who has sent in a story so far. Send your 50 word stories to us at The Archer, PO Box 3699, London N2 8JA or [the-archer@lineone.net](mailto:the-archer@lineone.net) and we'll publish the best.

## Cherry Tree Wood

We admit we were a little late for 1 April but we hope you spotted that our report on *New Life for Cherry Tree Wood* on page 4 was entirely fictitious. We just hope it doesn't give Barnet Council any ideas. Thanks to our April fool writer David Tupman.

### LOOKING FOR A CAT

Many cats and kittens needing good homes; some single, some in pairs.

And if you think you can help in our charity shop, do get in touch.

ANIMAL AID AND ADVICE  
48 HIGH ROAD EAST FINCHLEY  
OR PHONE 7607 1723

LOOKING FOR HOMES



Andys Web ([www.AndysWeb.net](http://www.AndysWeb.net))



## KALASHNIKOV KULTUR

By Ricky Savage, the voice of social irresponsibility

### Behind the green door

Another day, another dime and another photo of someone famous for being in the papers falling over outside some club. Another day, another dime and another talking head blames Kate or Lily or Amy for teenage binge drinking and the *Morning Mule* prints the photos to prove it. And me? Well, I'm pleased it used not to be like that.

I've fallen out of plenty of places and crawled across swaying pavements after seriously indulging in industrial quantities of recreational substances. I can't remember the details, but who cares, although I have a distant memory of Pete Townshend, too much brandy and a gutter. You can't do that now; well, you can, Amy does, and Lily and Kate do and I know they do because it's in the papers.

Then there's the emotional car crash called Britney and living your life under the constant glare of flash photography. It might sell papers, but I doubt it helps her get her life back together. And when it comes to cameras who needs enemies when you got the kind of friends Kate and Amy have. You know, the ones who film your most embarrassingly drug fuelled moments and then flog the pictures to papers. Privacy, what privacy?

In this weird world of life on the front page it doesn't take long before some po-faced gent in a suit starts accusing them of setting a bad example. What are they meant to do? Sit quietly in the corner drinking herbal tea? Rock 'n' roll has always been about excess and nothing has changed there. Keith Richards has a lost decade, Peter Perrett of the Only Ones did things that Pete Doherty can't imagine and at least half of Led Zep were out of their faces for most of the 70s. The difference was that no one was camping outside their houses hoping for the big money selling photos to flog to *The Sun*.

The green door used to be kept shut and if you were on the wrong side of it you never knew. They weren't trying to set an example to anyone, anymore than Amy and Kate are trying to set one. They were just having a good time, and sometimes a bad time. It was only rock 'n' roll and they liked it. Now you can't because if you do it'll be in the papers. As Hunter S Thompson said: "I don't recommend drink and drugs to anyone, but they've always worked for me"; it's just that there was no one there taking photos.

## East End tailor

By Sheila Armstrong  
Mahnaz Sharifi-Rad has recently started a new alteration and tailoring service in East Finchley at 125 East End Road.

Living in N2 for nearly a year now, Mahnaz is from Iran but lived for many years in Germany where she trained as a tailor and dressmaker. She offers an extensive range of alterations, from simple shortening and taking in of clothes of all sorts, to fitting new zips, making curtains and making clothes for women. Call during normal shopping hours to discuss your requirements. Her price list is available in the shop, or she can be contacted on 020 8442 0505.



Mahnaz Sharifi-Rad. Photo by Sheila Armstrong



brera gardens

- garden design
- maintenance
- hard landscaping
- interior plants & containers
- soft landscaping
- East Finchley based

Mob. 07939 557 934

Tel. 020 8365 3615

**Planning Application:**  
**Dwelling Rear Extension,**  
**Loft conversion Drafting Service**  
Experienced Architectural, Planning designers providing drawing service in assisting your planning application to local councils. £500 for all your dwelling survey, existing and proposed plan, elevation drawings for planning application.  
Contact: Mr. Lam 0208 4443 775  
email: [netfai@yahoo.com](mailto:netfai@yahoo.com)





## Regular Events

### SPORT & FITNESS

- ❖ **Finchley & Hornsey Ramblers Group** Call Vivien 8883 8190
- ❖ **Glebelands Indoor Bowls Club**, Summers Lane N12. New and experienced bowlers welcome.
- ❖ **Keep fit for the Retired** on Wednesdays, Christ Church N12. Call Bridie 8883 5269
- ❖ **Muswell Hill Bowling Club**, Kings Ave, N10. New & experienced bowlers welcome. Tel: 8883 1178.
- ❖ **Pilates** in East Finchley, qualified teacher. Contact Dee on 8883 7029
- ❖ **Pilates class** Wednesdays, 2.15-3.15pm at Youth Theatre, N2. Ring Penny Hill 8444 2882.
- ❖ **Tae Kwon Do** at The Green Man Thursdays 7-9pm 07949 612 706
- ❖ **Tennis club** with four clay courts off Southern Road. Call 8883 7723.
- ❖ **Wood Walk**, meet 10am at Cherry Tree Wood cafe on 1st & 2nd Mon of month for 1 hr walk, Call 8883 8750.
- ❖ **Yoga, breathing & relaxation**. Weekly drop-in classes - N2, N6, N10. Phone Judy on 8444 7783.
- ❖ **Yoga**, pregnancy yoga, meditation classes. Call Sunnah 07941 321 772 or see [www.stretchingpeople.co.uk](http://www.stretchingpeople.co.uk)

### MUSIC, DANCE & CREATIVE ARTS

- ❖ **Art Classes**. For info call Henry on 8888 5133.
- ❖ **Ballroom Dance Classes**, Wednesday evenings for beginners & improvers. St Mary's Church Hall, N3. 8444 0280.
- ❖ **Club Dramatika** drama club for kids. Call 8883 7110.
- ❖ **Creative writing classes** in informal, friendly atmosphere. Tel Sallie Rose 0208 444 7217
- ❖ **Drama Classes** for 11-14 year olds. Mondays at 6.30pm. Contact Carolyn on 07905 481682
- ❖ **East Finchley Writers Group**, Weds at the Old White Lion. Contact Carola 8883 5808 or Lilian 8444 1793.
- ❖ **East Finchley Poetry Writing Workshops**. Monthly on Saturdays. Contact Dennis Evans 8346 9528.
- ❖ **Finchley Jazz Club: All Stars Special** 14 & 28 April at 8pm, Wilf Slack Cricket Pavilion, East End Rd, N3.
- ❖ **Line dancing** Tuesdays from 8.30pm at The Constitutional Club. Call Maureen 8440 8530.
- ❖ **Memory Lane Singing Club** - friendly singing club meets every Friday in Finchley. Call Valerie 8458 4508.
- ❖ **Over 50s Tea Dance** at Christ Church, North Finchley. Every Weds, 1pm. 020 8444 0280.
- ❖ **Learn to sing** at Finchley Methodist Church, Ballards La. Call 8888 4412.
- ❖ **Street Dance** every Tuesday at Old Barn for children of various ages. Contact Lorna 07976 203669.
- ❖ **SwampRock** Louisiana dance club live music events. Carole 8810 7454 or [www.swamprock.org.uk](http://www.swamprock.org.uk).
- ❖ **Symphonic Wind Orchestra** Contact Caroline Egan 8340 2706
- ❖ **Tap Dance** for children at Old Barn on Mondays, Call Sharon 8349 4613
- ❖ **Traditional Music** in the Alexandra pub, Church Lane from 8.30pm on the last Thursday of every month.

### CLUBS & SOCIAL

- ❖ **Bingo Club** Mondays 7-9pm, Green Man Centre, Contact: Jan 8815 5459
- ❖ **Contact Lunch Club** Tuesdays at the Green Man. Call 8444 1162 to book.
- ❖ **EF National Childbirth Trust** contact Joanna 8883 0941 or [joanna-brunt@cybergal.com](mailto:joanna-brunt@cybergal.com)
- ❖ **Finchley & District Philatelic Society**, Contact Brian 8444 3251
- ❖ **Friendly Rubber Bridge** at The Old Barn. Contact 8349 4613
- ❖ **Friends of Cherry Tree Wood** [www.cherrytreewood.co.uk](http://www.cherrytreewood.co.uk) or call 8883 7544.
- ❖ **Haringey Recorded Music Society** informal meetings locally. Call David Mouldon on 8361 1696.
- ❖ **Highgate Film Society**, call 8340 3343 or email: [admin@hlsi.net](mailto:admin@hlsi.net).
- ❖ **North London Bridge Club**, Muswell Hill. Contact 8348 3495
- ❖ **Muswell Hill and Highgate Pensioners' Action Group** Call Bob Cottingham on 8444 7635.
- ❖ **Muswell Hill Tetherdown Bridge**, contact 8883 4390
- ❖ **Old Barn pre-school club**, contact 8349 4613/1961
- ❖ **Parent & Toddler Group**, Green Man Centre, Julia 8444 2276
- ❖ **Probus Lunch Club** for retired professionals. Call John 8883 8114.
- ❖ **Stepping Stones**, interactive play session for under 3's. Karen 07957 278860.



People's Choice Award winner Craig Johnson. Photo by Mike Cairns

## Cut out for photographic success

By Diana Cormack

**THE ARCHER's own Craig Johnson has won another award for his talent as a photographer. Formerly a member of the police force, Craig is now developing his photographic skills at Middlesex University. His work has been exhibited several times and Craig, of Sedgemere Avenue, is a keen supporter of the East Finchley Open, which involves local artists in a variety of events.**

His latest success came at the artsdepot, North Finchley, in the Community Focus Open Exhibition (see January's *ARCHER*). Craig interpreted the theme of a tribute to film director Tim Burton by photographing a model dressed as Edward Scissorhands in a Tottenham cemetery along with stills from the director's films. He beat a

large field of entrants to win the People's Choice Award.

In February, Craig's work was on exhibition with that of other third year Middlesex University students at The Kingsgate Gallery NW6. Now 25, Craig has been contributing to *THE ARCHER* since he was a pupil at Holy Trinity Primary School.

## April at the Phoenix

By Paul Homer, Phoenix Cinema general manager  
**April opens with *My Brother is an Only Child* from Friday 4 April, a coming-of-age drama about two Italian brothers with very different views of the world, one an ardent socialist and the other an ardent fascist. How they maintain their relationship despite their differences makes for an insightful and thrilling film.**

There seems to be a resurgence of Italian film at the moment with Paolo Sorrentino (*The Consequences of Love, The Family Friend*) and Daniele Luchetti, director of *My Brother*, leading the way.

The highlight for April, and certainly one of the highlights of the film year, is the new Mike Leigh film from 18 April. *Happy-Go-Lucky* stars Sally Hawkins as a North London teacher whose life is in a mess. It's a much lighter piece than Leigh's more recent films and is in the vein of *Abigail's Party* or *Nuts In May* but still with Leigh's pessimistic view of the world. We're delighted that Mike will be coming to the Phoenix on Tuesday 22 April for a Q&A session following the 7.30pm screening. As a patron of the Phoenix, Mike

has allowed this event to be a fundraiser for the Trust that runs the cinema, with monies going towards the Phoenix's redevelopment fund.

*Winter Light* and *Silent Light* is the double bill on Sunday 6 April. *Silent Light*, by Mexican director Carlos Reygadas, was my favourite film from 2007. It tells of the Mennonite community in Northern Mexico, a deeply traditional and religious community within which Johan has an affair. The pace is beautifully slow with exceptional photography, especially at the beginning and end of the film. A deceptively simple but truly remarkable film which I would urge anyone interested in film to watch

Contact our box office on 020 8444 6789 or visit [www.phoenixcinema.co.uk](http://www.phoenixcinema.co.uk)

## North London Festival

By Betti Blatman

**From Tuesday 15 April to Saturday 17 May, the 2008 North London Festival of Music, Drama and Dance will be held at the United Reform Church, Tetherdown, London, N10, with the Prizewinners' Concert being held on Sunday 18 May at 5 pm.**

Further information is available on [www.northlondonfestival.org.uk](http://www.northlondonfestival.org.uk) or from the festival administrator on 020 8886 7237.

## On the double

**Lithuanian-born pianist Rimantas Vingras, who has made his home in East Finchley, is returning to Lithuania to give concerts in two cities as part of a festival organised for ex-pat musicians.**

He will be accompanied by Eleanor Wilkinson, a violinist who is a member of the Phiharmonia Orchestra and who lives in East Finchley. In addition to playing works by Handel, Mozart, Schubert and Britten they will be giving the first performance of a new

work, *Caprice*, which they have commissioned from Geoffrey Hanson, founder of the East Finchley Arts Festival. Geoffrey is also currently writing a work for the London Mozart Players for this year's Arts Festival in October.

## Volunteer for art

**North Finchley's artsdepot has put out a call for volunteers interested in becoming involved with various aspects of gallery management and invigilation.**

Gallery invigilators are responsible for opening and closing the gallery, being on hand to welcome visitors, providing them with art materials and answering any questions they may have, and carrying out occasional routine administrative tasks.

There will also be the opportunity for volunteers to become involved with other areas of the gallery's work, for exam-

ple hanging exhibitions and assisting with workshops and educational talks and visits.

If you are interested and have some time to give on week days and weekends between 12pm and 4pm and / or evenings between 6-8pm then contact artsdepot on 0208 369 5454 and ask to speak to Tracey Lazarus, Visual Art Programmer, or e-mail [tracey.lazarus@artsdepot.co.uk](mailto:tracey.lazarus@artsdepot.co.uk).

## What's On...

E-mail your listings to: [the-archer@lineone.net](mailto:the-archer@lineone.net)

### Friday 4 April:

- **Friends of Barnet Libraries** host a talk by Susette Palmer on *Assyrian Archaeology: Hidden Gold*; East Finchley Library, 11am - 12noon. Refreshments provided. Everyone welcome.

### Sunday 6 April:

- **Farmers' Market** at Martin Primary School, High Road, from 10am - 2pm (but come early for best choice). £2.

### Saturday 12 April:

- **BBC Elstree Concert Band** perform *music from the Swing era* at St James's Church, Muswell Hill, 7.30 pm. All proceeds to North London Hospice. £15, under-16s £5. Book on 020 8446 or 020 8883 47362288

### Sunday 13 April:

- **East Finchley Methodist Church** concert, 8pm; Gosia Kuznicki (violin) and Jennifer Mantle (piano) play works by *Brahms, Stravinsky, Mompou and Sarasate*; free admission with a collection in aid of Oxfam. The venue is fully accessible for people with disabilities.

### Saturday 19 April:

- **Spike Milligan Statue Fund Raising Quiz**, 7.30pm at the East Finchley Constitutional Club, The Chestnuts, The Walks, N2.

### Tuesday 22 April:

- Special fundraising **Q&A with director Mike Leigh** along with a screening of his latest film *Happy-Go-Lucky* (15); Phoenix Cinema, 7.30pm. Box office 020 8444 6789.

### Thursday 24 April:

- Michael Lassmann talks to **The Finchley Society** about *Living in Barnet: A Partnership Approach*; Avenue House, East End Road, N3, 8pm. Everyone welcome. Entry for non-members: £2.

### Thursday 24, Friday 25 and Saturday 26 April:

- **The Guild Players** present *Gaslight*, the Victorian thriller by Patrick Hamilton; Finchley Methodist Church Hall, Ballards Lane, N3; 7.45pm each evening. Tickets £7 each. Box Office: 020 8346 6337.

### Friday 25 April:

- **Whisky tasting at East Finchley Constitutional Club**, The Walks; 7.30pm. Come along and sample a range of Scottish single malts while learning about their individual characteristics from expert Dr Tony Boulton; £5 per ticket (including five whisky samples); all single malts only £2. Tickets are limited. Call 020 8883 4916.

### Saturday 26 April:

- **Barnet NCT Nearly New Sale**: lots of bargains for pregnancy, baby and young children; 10.15 am - 12 noon (10 am early entry for NCT members with card); Finchley Sea Cadets Hall, 184A Long Lane, Finchley N3 2RA (close to Squires Lane junction); admission: £1 (children free); sorry, prams and pushchairs must be left outside the hall.
- **Buffet Supper Concert at All Saints' Church**, Durham Road, 7.30pm; Tim Robinson and Patrick Naylor play a varied programme of *acoustic jazz guitar, including swing and bebop, latin, bossa nova, gypsy waltzes and original compositions*, with special emphasis on the music of Django Reinhardt and the Quintet of the Hot Club of France. Tickets: supper and concert pre booked only £15 (020 8444 9214); concert only, £10 at door.
- **New York Metropolitan Opera** screened live at the Phoenix Cinema; *La Fille du Regiment* (3 hours 10 minutes, one intermission), a new production starring Natalie Dessay and Juan Diego Flórez transmitted live in HD video from 6.30pm; tickets £25. Box office: 020 8444 6789.

### Sunday 27 April:

- **The Battle of Barnet**: explore the famous battlefield of 1471 on a guided walk. Meet at junction of Great North Road and Hadley Green Rd, 11am. Phone 020 8440 6805 for details.
- **Delphic Divas**; singers Elizabeth Menezes (Soprano) and Camilla Cutts (Mezzo soprano) perform their first duo concert at Burgh House, Hampstead at 2.30pm. Programme includes music by Brahms, Mendelssohn and Dvorak along with popular operatic duets. Tickets £10, concs £8. Box Office: 0208 883 1449.
- **Birds of prey display in Highgate Wood**, 11am - 3pm. Meet at the information hut.





## An intellectual game

By Paul M Levy

**Bridge evolved during the 19<sup>th</sup> century. Like whist, it is a partnership game with two pairs of players pitting their wits against each other.**

Officially recognised here just over a century ago, Bridge developed in America between the two world wars to something like the game we play now. British experts improved certain aspects of bidding (the 'code' or language of Bridge), and throughout the British Isles we now teach beginners the bidding system called Acol.

The game has produced its fair share of controversy. A lady in America is said to have shot her husband during a game because she objected to the way he bid his hand.

The intellectual appeal of Bridge has attracted many famous players. Egyptian film star, Omar Sharif, is widely known as a celebrated master of the game. These days Bridge

crops up in many areas and times of our lives: it is played in schools and universities (there is a varsity match every year), there is an annual match between the House of Commons and the House of Lords, businesses run bridge clubs as part of their social activities and it is widely believed to help delay the onset of senility in older folk.

Bridge is a thoroughly absorbing, intellectual exercise and, perhaps best of all, it is a wonderful tool for opening up players' social lives.

*Paul teaches bridge at all levels at The Institute, 11 High Road, East Finchley. For further information telephone: 020 8829 4141 or e-mail office@hgsi.ac.uk.*

## OBITUARY

### Mrs Doris (Dolly) Jackson

**Dolly Jackson, a lifelong resident of East Finchley, passed away on 22 February, not long before her 94<sup>th</sup> birthday. One of seven children, she was born on 11 March in Avention Road, Market Place, and attended Holy Trinity School in East End Road, which now houses the Bobath Centre. Dolly and her siblings were the first of several generations of the family to attend Holy Trinity School.**



Dolly Jackson. Photo courtesy Margaret Cartwright

A popular and well-known member of the community, she lived for many years in Kitchener Road with her husband Bill (Buster) who was a local coal man and their daughter Pat. The couple moved to Homefield Gardens, N2, in their retirement years.

Mrs Jackson leaves her daughter Pat, two grand-

children and five great grand children. Her nephew Michael conducted the funeral service at Marylebone (East Finchley) Cemetery, East End Road. She always loved *THE ARCHER* and her niece Margaret told us that Dolly took a copy with her.

## Letters

### Memories of Martin School

Dear Editor,

In your February issue, you had an article about memories of the Martin School. I went to the Martin and Mrs Ellen was the headmistress when I was there. She was very nice although I did have the cane once from her.

I am 71 years now. I was at the school when the war broke out and we were in the shelters more than in the classrooms.

I loved the sports days there and having the field by the school. I won a few races there, running and hurdles.

I have kept in touch with several of my school friends. Most of the teachers were getting on a bit - not like the teachers of today, most of whom look not much older than the pupils - and they were very strict with us, but they were happy days for all the things that seemed bad at the time.

**Yours faithfully,  
Jean Swain (née Gale)  
Figheldean, Salisbury, Wilts.**

### Were we at the same meeting?

Dear Editor,

I was one of the 'chosen' residents of the polling district invited to the 'Leader Listens' meeting held in January, but I did not recognise Daphne Chamberlain's account of the meeting. Did we attend the same one?

The invitation was sent out to residents across the polling district, regardless of political persuasion, the only criteria being that they must be on the electoral roll for that ward. As the article states, Barnet Council said that the media were not invited, nor were ward councillors or residents from other districts. So why, I wonder, was the *ARCHER* writer there?

Councillor Freer explained that the purpose of such meetings was that they are intended for local residents to raise any issues or concerns they may have. In my view he answered all questions raised in an honest and open manner, maybe not always giving the answers people wanted to hear, but that is life.

The furore that took place at the start of the meeting only illustrates what could have taken place if the meeting was open to all. There was certainly an attempt by some people to engage in 'party political backbiting'.

Councillor McNeill would be perfectly well aware of the rules concerning such meetings and knew that he was not entitled to be present. There was no hidden agenda, the aim was to reach people who might want to raise issues of concern and get feedback.

**Yours faithfully,  
Name and address supplied.**

### Let's welcome this initiative

Dear Editor

I must complain about the carping and negative tone of Daphne Chamberlain's article about the Leader Listens meeting (*THE ARCHER*, March 2008). Considering the appalling weather on that particular evening the meeting was very well attended.

The issues were raised and questions asked in a very constructive and positive way by an audience who were well informed because they are the people living in the local area. A large number of items were covered and already residents have received a detailed summary of what was discussed and how issues will be dealt with. We should be welcoming this sensible and democratic initiative, not criticising it.

**Yours faithfully,  
Graham Old  
Park Farm Close, N2**

### More facts, please

Dear Editor,

A number of people have commented on the leader article in the March issue. I must admit that I was very surprised, myself, that a very biased personal opinion was allowed such prominence - even the heading was contentious.

Surely *THE ARCHER* is supposed to be a non-political, independent paper. Personal opinions in the past have been given the 'soapbox' corner.

I am not a Tory supporter, but was invited to the meeting as a resident of the appropriate ward - unlike the writer. I have received a follow-up letter giving a full report of the meeting and it appears to have been very constructive. The article, however, seemed only to focus and comment on events before the actual meeting was under way.

In my view the article should have been given less prominence in the paper, been much shorter, more factual and less loaded with inappropriate activities which formed a very minor part of the proceedings.

I fear that you could lose readers and supporters if personal political/racial/religious views are allowed to take over and would suggest that a closer eye may be needed in the future to ensure that this does not happen.

**Yours faithfully,  
Pamela Kent,  
Hamilton Road, N2**

### Editor's response

*Thanks to everyone who wrote to The Archer regarding our coverage of the Leader Listens meeting in last month's issue. As a community newspaper we felt it was right to report the meeting because it covered issues affecting the whole of East Finchley, not just a single ward. Events at the meeting were there to be reported just as much as issues raised in the question and answer session. THE ARCHER has had no contact with any political party on this subject.*

### Cree Godfrey Wood Solicitors

Commissioners for Oaths

Hours: 9.30am to 5.30pm.

email: [admin@creegodfreyandwood.co.uk](mailto:admin@creegodfreyandwood.co.uk)

28 High Road, London N2 9PJ

Tel: 020 8883 9414 / 9496 / 0989

[www.creegodfreyandwood.co.uk](http://www.creegodfreyandwood.co.uk)

### Midhurst Butchers

Certified organic meat

at reasonable prices

Free-range poultry

Home-made sausages

(including Boerwors)

2 Midhurst Parade,

Fortis Green, London N10

Tel. 020 8883 5303

### Jennie Mann Flowers

◆ Hand tied bouquets

◆ Scented Candles

◆ Gifts

◆ Events and Corporate



◆ Planted arrangements

◆ Homewares

◆ Orchids

◆ Vases and Containers

Deliveries throughout northwest London and beyond

63a Church Lane, East Finchley. London N2 8DR tel: 020 8365 2284

email: [info@jenniemann.co.uk](mailto:info@jenniemann.co.uk)

[www.jenniemann.com](http://www.jenniemann.com)

## The East DENTAL

Tel: 020 8

NHS & Private Patient Welcome

Tel: 020 8444 3436

## The East Finchley DENTAL CENTRE

Dr D Freedman BDS (England), MSc (London)  
Dr A Motamed DDS (Sweden)

**NHS DENTAL CENTRE OF EXCELLENCE**

To register for NHS Dental Care or if you require emergency treatment please call

**Tel: 020 8444 3436**

Web: [www.eastfinchleydentalcentre.co.uk](http://www.eastfinchleydentalcentre.co.uk)

- Friendly, experienced, dedicated Dental Team
- General Dental Care and Service
- Special care for Nervous patients
- Dental Care for Children
- Preventative Dental Care
- Cosmetic Treatment
- Private treatment undertaken
- Teeth Whitening

**144 High Road, East Finchley, N2 9ED**

All are welcome to register and be treated at The East Finchley Dental Centre, in a modern and friendly atmosphere, where all can feel welcome.





Shoes, Trainers, Sandals, Bags and Luggage

Complete Repair Service by a craftsman  
Same day if required

Key Cutting

1 Manor Park Rd. N2, behind 88 Church Lane, opposite Trinity Church  
Tel: 07956 329 150 Open 12-8pm (not Wednesdays)

# THE ARCHER

Published by East Finchley Newspapers, P.O. Box 3699, London N2 8JA. www.the-archer.co.uk



## Gates open on gardens for first time

By Susan Bennett

As Assistant County Organisers for the National Gardens Scheme, a charity raising money for caring causes by opening private gardens to the public, Earl Hyde and I are constantly looking for new gardens.

From May, East Finchley will reveal some of its fascinating hidden gardens, most for the first time, but with the welcome return of birdkeepers Paul Harrington's and Patsy Joseph's award-winning garden The Bungalow in Elm Gardens, now with their own fledgling son Stanley.

### Newly-opening gardens

A conversation with Paul led Stephen Kersley to invite us to view his garden. Our first step up Stephen's path in Abbots Gardens told us instantly that our response would be "Yes". Stephen studied garden design at Capel Manor. Soft grasses, architectural perennials, texture, geometry, passion and understanding combine to create a space that lifts, yet calms the spirit.

A week later, three small cottage gardens beckoned, each unique and tempting. We discovered Janet's and her brother Jonathan Maitland's gardens in Trinity Road and Long Lane last year. A peek from Janet's study window revealed Jane Meir's promising plot next door.

Janet's organic garden shows experience, skill and a good eye, a thrilling space full of elegance and surprises. Jane is experimenting and transforming her space with exuberance, and a subtle sense of colour. John, a painter, started from scratch two years ago, creating an idiosyncratic year-round refuge. Visitors will be fascinated to discover what can be achieved in a small space.

In contrast, Tudor and Hilary Spencer's densely planted garden in Stanley Road has been thoughtfully designed to be completely wheelchair friendly with no aesthetic compromise. Eight distinct areas on two levels include a vegetable plot and pond.

### Diary dates

If you can't wait until May, our own garden at St. Regis Close, Muswell Hill, chosen for the media launch of the 80th Birthday of the NGS last year, will be open on 29 April. It's Maureen Lipman's favourite garden, full of humour and trompe l'oeil effects, with

a temple, pagodas, wildlife ponds, and colourful planting. We sell plants that will thrive well in local conditions and Earl's cakes are legendary.

Even if you don't have a garden, why not enjoy a cup of tea and home made cake while you relax and admire your neighbours' hard work, knowing it's all in a good cause?

### Garden open Sundays:

- 5 St Regis Close, Alexandra Pk Rd, N10; 29 April (2-7pm) and 4 May (2-6pm); admission £2.50, children free; home made teas and plant sale.
- 66 Abbots Gardens, N2; 11 May and 7 September (2-5.30pm); admission £2.50.
- East Finchley Cottage Gardens, 20 and 22 Trinity Rd and 399 Long Lane, N2; 18 May (2-6pm); admission £3 for all three, children free.
- 2 Stanley Road, N2; 18 May and 7 September (2-5.30pm); admission £2.00, children free; home made teas.
- The Bungalow, 15 Elm Gardens, N2; 20 July (2-6pm); admission £2.50, children free; home made teas; plant sale.



Tudor and Hilary Spencer's wheelchair-friendly garden in Stanley Road

## Browsing for inspiration

By Diana Cormack

Ladies from *THE ARCHER* team indulged in an evening of browsing through the stock at Lazooli on the High Road. Everyone enjoyed trying on outfits and experimenting with styles they had never dared wear before, which resulted in some excitingly different purchases being made.

The footwear, bags, belts and scarves were well inspected and some unique jewellery gave inspiration for presents. Particularly eye catching were the lovely pieces hand made locally by Eti Wade of Fortis Green.

Gaynor Spry, who runs the business, told *THE ARCHER* that these evenings are becoming so popular that they are extending the idea. You can book for two hours any time, any evening, free of charge, with wine and ambience courtesy of Lazooli. The ideal number for browsing is between ten and 20 people and you can get an invitation to print out and give to your group. Friends, colleagues, book clubs, NCT groups, etc. can book their own exclusive Browsing Evening.

For further details contact Lazooli on 020 8883 1117 or visit [www.lazooli.co.uk](http://www.lazooli.co.uk).



Debby Hiller, Sheila Armstrong, Diana Cormack, Daphne Chamberlain and Gaynor Spry at Lazooli. Photo by Ann Vautier

### ACTIVE CHIROPRACTIC HEALTHCARE CLINICS

Backache, neck ache, sciatica, car injury, sports injury, migraines, joints, knee, arms, legs & shoulder problems, repetitive strain injury, slipped disk, trapped nerves.

On site x-rays.

For a Limited time book your initial free consultation by quoting this advertisement.

With

Dr Mark Warren BSc. MChiro. ICSSD Chiropractor

98 High Road, East Finchley N2 9EB

Tel: 0208 444 0666

[www.activechiropractic.org.uk](http://www.activechiropractic.org.uk)

[info@activechiropractic.org.uk](mailto:info@activechiropractic.org.uk)

## STEWART DUNCAN

OPTICIANS, SINCE 1962

- EYE EXAMINATIONS
- DESIGNER EYEWEAR
- CONTACT LENSES
- LATE NIGHT
- DYSLEXIA CLINIC
- DVLA APPROVED
- OLD FASHIONED SERVICE

020 8883-2020

126 HIGH ROAD, EAST FINCHLEY



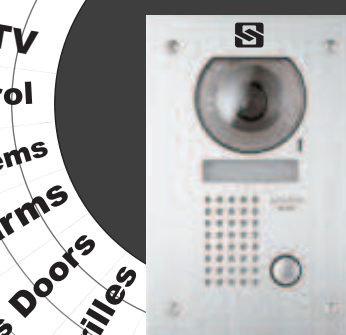
## SECUREBASE

DOMESTIC COMMERCIAL INDUSTRIAL SECURITY

Est 1988

CCTV  
Access Control  
Intercom Systems  
Intruder Alarms  
Locks Doors  
Safes Grilles  
+ EMERGENCY LOCKSMITHS

WHY NOT HAVE  
Your Security Problems Solved!  
A FREE ALARM SURVEY



0800 279 0792

112 High Rd • East Finchley • London N2

[www.securebase.co.uk](http://www.securebase.co.uk)