

**JEREMY LEAF & CO.**

Professional Sales & Lettings  
AT COMPETITIVE RATES  
020 8444 5222  
eastfinchley@jeremyleaf.co.uk

Local News is our Aim

# THE ARCHER



**GLH**

CAR SERVICE  
020 8883 5000

September 2007 No. 168  
ISSN 1361-3952

**20p**  
where sold

*A community newspaper for East Finchley run entirely by volunteers.*

## Lottery money is vital to library's future

By Daphne Chamberlain

**The planned re-organisation of the borough's library service underlines the importance of East Finchley Library's bid for lottery funding.**

Barnet Council has decided to designate its libraries as 'Leading' or 'Local'. East Finchley will be a Local library. The Council estimates that the High Road building needs rewiring and emergency lighting replacement. If the lottery application is successful, that cost will be covered by the funding, which will provide Barnet Council with £857,000 from September 2007 to April 2011.

If the bid is unsuccessful, East Finchley will have to take its turn in the Council's general maintenance programme, governed by availability of funding and health and safety prioritisation.

### Local means lower grade

Barnet Council told *THE ARCHER* that even if the lottery bid is successful, East Finchley will still remain a lower-graded library. Current opening hours will not be extended, though the bookable upstairs space would

be used "for as many hours as possible" for activities including dyslexia support, reading groups and basic skills classes.

Barnet told us that the services offered at East Finchley Library would be enhanced by the commitment of local groups, including the police, the Health Inform project and the Credit Union.

### Library User Boards

Borough-wide, proposed Library User Boards are intended to promote local volunteer help for services such as housebound readers and mentoring of young people.

Barnet's market research shows strong support for more accessible libraries, but improvements will again be focused on Leading libraries, chosen for size and location.

In fact, most of these do not fit the Council's criterion of being within the commercial footfall, and Barnet told *THE ARCHER* that, although there are no plans to close or relocate any libraries at the moment, the Council will follow up "good and affordable" locations when they become available.

A decision on whether East Finchley Library will be granted lottery funds is expected in October.



Emergency services were called to the scene of an accident in the centre of East Finchley. Picture by John Dearing

## High Road casualty

By John Dearing

**At around 13:30 on Saturday 4 August, a pedestrian crossing the High Road by the lights at the junction with Fortis Green and East End Road was hit by a vehicle travelling south.**

Emergency services were called, the High Road closed between Leicester Road and Fortis Green and traffic diverted, causing large queues to form (including no fewer than seven 263 buses, south-bound). The Air Ambulance helicopter was called, and landed in the London Underground Station car park. The casualty, an elderly woman, was taken to a North London hospital.

## Public meeting: how to safeguard our Wood

**Users of Cherry Tree Wood will have an opportunity to express concerns and share ideas about the park's future at a public meeting in the park on Sunday 9 September.**

The meeting follows Barnet Council's decision to axe the Wood's full time park keeper, which many park users believe has resulted in an increase in uncollected litter, graffiti and anti-social behaviour. 400 local residents signed a petition calling on Barnet Council to reconsider reinstating a park keeper but the Council to date seems unmoved.

There is also concern that, without active management, the woodland will fall further into decline. The Friends of Cherry Tree Wood, who are organising the meeting, hope it will be an opportunity to put forward positive ideas and to plan action to safeguard the wood's future. One idea already being floated is for local residents themselves to become more active in managing the park. David Attfield of the Friends said, "People are becoming increasingly angry and concerned for the park's

future. We want to bring everyone together to discuss ideas for turning the situation around".

The meeting is being held at 11am at the park's café and will be followed by the Friends of

Cherry Tree Wood's annual general meeting. Everyone interested in the future of the park is invited to attend. For more information, the Friends can be contacted at [info@cherrytreewood.co.uk](mailto:info@cherrytreewood.co.uk).

## Hotblack Dixon & Co. Estate Agents

Our success rate in N2 is very high indeed, obviously in Hampstead Garden Suburb but also in East Finchley.

We have often obtained better prices from our base in the Suburb, so

**Please call us for a free valuation or try us if you are on a multiple agency basis**

17 Market Place, Hampstead Garden Suburb  
London NW11 6JY

**020 8458 8411**

**PRICKETT & ELLIS TOMKINS**

36 High Road  
East Finchley N2 9PJ

**020 8883 0033**

*Properties urgently required - now is the time to sell!*

**Estate Agents and Valuers. Established 1767**

**EVERYTHING ELECTRICAL**

Established in the community for 15 years

All domestic and commercial work undertaken by qualified electricians

Dimmable Energy Saving Bulbs  
(NOW IN STOCK)



Roberts DAB Radios  
(starting from only £49.00)

Call us FREE on **0800 279 3463** or **020 8444 7994**

[www.everything-electrical.com](http://www.everything-electrical.com)

38 High Road, London N2 9PJ

Cut-price  
Fragrances

**Coral Pharmacy**

Photo D&P  
only £3.99  
for up to 40 exp  
(35mm)

Stockists of a wide range of vitamins, homeopathic remedies, and herbal products.

Open Till 6:30pm (Mon - Fri) 6pm Sat - Parking Available

129 East End Road N2 0SZ Tel 8883 0442

• Visit your community newspaper on-line at [www.the-archer.co.uk](http://www.the-archer.co.uk) •





## THE ARCHER

PO Box 3699  
LONDON N2 8JA

WWW.THE-ARCHER.CO.UK

e-mail: THE-ARCHER  
@LINEONE.NET

### Voicemail & Fax:

Editorial/enquiries: -  
08717 33 44 65

Advertising/finance: -  
08717 33 45 28

PUBLISHED BY  
*East Finchley  
Newspapers*

CHAIR  
*Kevin Finn*

COPY EDITOR  
*John Lawrence*

EDITORIAL TEAM  
*Diana Cormack  
Daphne Chamberlain  
David Hobbs*

SUB EDITORS  
*Ann Bronkhorst  
Wendy Devine  
Pam Kent*

PRODUCTION EDITOR  
*Alison Roberts*

PICTURE EDITOR  
*Sarah Clackson*

ADVERTISING  
*John Dearing*

FINANCE  
*Sue Holliday*

ADMINISTRATION  
*Toni Morgan*

DISTRIBUTION  
*Sue Holliday  
Pam Kent*

LEGAL ADVISER  
*Francis Coulson*

PRINTED BY  
*Sharman & Co Ltd*

*Thank you to Madden's  
Ale House for providing  
us with a meeting place.*

*THE ARCHER team wishes  
to thank all the generous  
people who give up their  
spare time, in all weather,  
to deliver the paper for us.*

### Your contributions

If you have a story for us, please  
contact us at the above address.

Comments to THE ARCHER may be  
published unless clearly marked  
'Not for publication' within the text.

### Copy deadlines

October issue: 14 September  
November issue: 12 October  
December issue: 16 November

## USEFUL TELEPHONE NUMBERS

### Councils

#### Barnet Council:

Admin/Town Hall 020 8359 2000  
Council Tax 020 8359 2608  
Recycling & refuse 020 8359 4600  
Primary Care Trust 020 8201 4700  
Benefits Agency 020 8258 6500  
Employment Service 020 8258 3900  
Haringey Council 020 8489 0000

### Leisure

Alexandra Palace 020 8365 2121  
East Finchley Library 020 8883 2664  
Muswell Hill Odeon 0870 505 0007  
Phoenix Cinema 020 8444 6789  
Warner Cinema 020 8446 9933

### Transport

BR Enquiries 0845 7484950  
City Airport 020 7646 0088  
London Transport 020 7222 1234  
National Express 08705 808080  
Heathrow Airport 0870 000 0123

### Hospitals

Barnet General 020 8216 4000  
Coppetts Wood 020 8883 9792  
Finchley Memorial 020 8349 7500  
Oak Lane Clinic 020 8346 9343  
Royal Free 020 7794 0500  
St Luke's 020 8219 1800  
Whittington 020 7272 3070

### Health Advice

AIDSline 020 8363 2141  
Alcoholics Anonymous 0845 7697555  
Barnet MENCAP 020 8203 6688  
Cancer Support 020 8202 2211  
Carers' Line 0808 808 7777  
Drinkline 0800 917 8282  
Drugs Helpline 0800 776600  
Health Info Service 0800 665544  
MIND 020 8343 5700

### OAP's Advice

Barnet Age Concern 020 8346 3511  
Contact (N2) 020 8444 1162

Help the Aged 0808 800 6565

### Crime

Emergency 999  
Finchley Police 020 8442 1212  
Mus. Hill Police Stn. 020 8345 2148  
CrimeStoppers 0800 555111  
Victim Support 0845 303 0900  
East Finchley Safer Neighbourhood  
Team 020 7161 9014

### Help & Advice

Childline 0800 1111  
Disability Info Service 020 8446 6935  
E.F. Advice Service 020 8444 6265  
Gingerbread 020 8445 4227  
National Debt Line 0808 808 4000  
NSPCC 0800 800500  
Rape & Sexual Abuse 020 8683 3300  
Relate 020 8447 8101  
RSPCA Inspector 08705 555 999  
Samaritans 08457 909090  
Refuge Crisis Line 0870 599 5443



42 Church Lane, London N2 8DT.  
Tel/Fax: 020 8444 6265

### General Advice.

Monday to Friday: 10am -  
12.30pm and 1.30pm - 4pm.

### Legal Advice.

Tuesdays: 7pm - 8pm.

### Councillors' Surgery.

Saturdays: 10am - 11.30am

### Community Services

❖ Credit Union, Green Man Community Centre 020 8883 4916  
❖ Careers advice, Green Man, Community Centre 020 8883 4916  
❖ Toy library, Muswell Hill 020 8444 0244/ 8489 8774

## Assault in Church Lane

On Saturday 14 July at about 3.30am, a 17-year-old girl was walking home along Church Lane, N2, when a man attacked her from behind. He is described as a white male, about 28 years old and 5 feet 11 ins. tall. Barnet Police are appealing for anyone who may have seen this man at the time or has any information regarding this attack.

DC Adam Brown from Barnet Police said: "This was an unprovoked attack on a young lady by an unknown male whilst she was walking home after a night out with friends. I am appealing for anyone with information to contact police on 0208 733 5036 or anonymously on Crimestoppers on 0800 555 111, quoting crime reference number 2417055/07."

## Advice to minicab customers

Barnet Police have issued advice to people using taxis at night, following a serious attack on a woman by a bogus mini cab driver in Perivale in July.

- Always get a black cab or pre-book a car through a licensed minicab operator.
- Carry the phone number of a minicab company you've used before and trust.
- Check that the minicab you ordered is the one you get into.
- Check that his operator has given the driver your name and destination.
- Always sit in the back and carry a mobile phone.

If you have a problem with the driver of a black cab, make a note of the number on the white plate inside the cab and report it to police or the Public Carriage office. If you have a problem with a minicab driver remember the car's make and number and report it to police.

## Stop and search on the rise

The Metropolitan Police have advised people that they may be stepping up the number of stop and searches they carry out in Barnet and across London as the threat of terrorism in the capital continues.

Visible security measures are being increased, using powers given to the police under the Terrorism Act 2000. Police can search anybody anywhere under this law, and they do not need reasonable suspicion to do so; police can, for example, conduct random searches in train and tube stations.

The Met says the threat of a terrorist attack is real and serious, although there is no specific intelligence to suggest an attack in London.

Chief Superintendent Stephen Kavanagh said: "We are using these measures at local transport hubs and other busy areas such as popular shopping locations. We will continue to do so in order for Barnet and London to be a safe place to live, work and commute."

The Met is appealing for the co-operation and patience

of the public whilst they carry out their duties and ask Londoners to remain vigilant and report any suspicious activity to the confidential Anti-Terrorist hotline on 0800 789 321, or in an emergency 999.

## Insurance check

On Wednesday 11 July, an operation to catch uninsured drivers in East Barnet resulted in 14 vehicles being seized. Automatic number plate reading machines checked DVLA records instantly.

The 14 cars and vans were stored for a period to give the owners time to provide proof of insurance. Drivers unable to do so were fined and their vehicles were crushed.

## OSTEOPATHY

at

## The Twyford Practice

*Osteopathic consultation and treatments  
in Fortis Green, N2.*

**Robin Kiashek,  
Osteopath and Naturopath,  
Bsc (Hons), Ost Med.,  
N.D., M.R.N.**

For appointments:  
please phone 020 8815 0979

or visit:

[www.robinkiashek.co.uk](http://www.robinkiashek.co.uk)  
for further information

## Planning Applications

### Barnet Council

139 Abbots Gardens, N2  
Roof extension including both sides and rear dormers to provide rooms in roof.

The Badgers, White Lodge Close, N2

Amendments to planning permission C04754N/06 and Conservation Area Consent C04754P/06, dated 03.01.07, for erection of new two-storey detached house with rooms in roof space and basement following demolition of existing house.

11 Deansway, N2

Single storey side extension. Attic conversion including two side and rear roof lights. Gas meter box to side elevation. New gate. Extended rear terrace and new garden wall.

3 Elm Gardens, N2

Single storey rear extension and new replacement garage at rear. Pavement to the front of Viceroy Parade, High Road, N2

Installation of one 11.5 metre free-standing pole with tree antennas and three ancillary equipment cabinets and one electric meter pillar.

83 High Road, N2

Rear second floor and mansard roof extensions in connection with the conversion of the upper floors of the property into five self-contained residential units.

98A High Road, N2

Change of use from solicitor's office (Class A2) to Chiropractic clinic (Class D1).

Haringey Council

26 Aylmer Road, N2

Demolition of existing conservatory and erection of new single storey rear extension.

28 Beech Drive, N2

Creation of new front porch.

3 Greenfield Drive, N2

Certificate of Lawfulness for the erection of rear dormer window

3 Ringwood Avenue, N2

Tree works to include felling / removal of one oak tree.





Five-year-old cerebral palsy sufferer Claire Browne (left) with twin sister Samantha. Picture courtesy The Hornsey Trust.

## Cycling fund-raiser for Hornsey Trust

Round Tablers from England, Holland and Germany are joining forces this summer by cycling from Holland to Germany to raise much-needed funds for The Hornsey Trust, the specialist centre for children with cerebral palsy in Muswell Hill.

Brainchild of local solicitor John Martin, a trustee of the charity, the event is gathering momentum. Cyclists aim to raise a total of £30,000 for the centre. The route from the Dutch coast to Bielefeld will take a week to complete.

"We wish the cyclists well," said Jim Thompson, Chief Executive of The Hornsey Trust. "Each child here struggles to take small steps that are easy for you or me and each year we need to raise at least £200,000 to keep going, which is a tall order. That's why events like Cycle Holland are so important to us."

To sponsor the cyclists, contact John Martin or visit Cycle Holland's website [www.rideforchildren.org.uk](http://www.rideforchildren.org.uk).

The Hornsey Trust is also searching for tough guys and gals to take part in a Military 10k Fitness challenge on Saturday 27 October. Entry is free but sponsorship of £300 or more is requested. For details or an entry form, email [anna@hornseytrust.org.uk](mailto:anna@hornseytrust.org.uk) or telephone 020 8444 7242.

## Ashes to ashes

By Diana Cormack

A litter bin outside Pacey's the newsagent at 103 High Road was destroyed by fire at the beginning of August.

One of the shopkeepers told THE ARCHER that it had happened overnight. He believed it could have been caused by a discarded cigarette from a smoker at the nearby bus stop or outside the

Gertie Browne's public house. With little or no provision for the disposal of cigarette butts, some smokers who now have to smoke outside are littering local pavements with them. Coincidentally, this is the moment when Barnet has seen fit to move Colin, our dependable street cleaner for over 11 years, to North Finchley.

## Growing together with school allotment project

By Diana Cormack

Exactly a year ago Martin Junior and Martin Infant Schools got together for their first linked project. After discussion it was agreed that they would develop the area at the end of the large school sports field as an allotment. This piece of land was not used for sports because it has a slight slope, which would be helpful for drainage in what, at times, is boggy soil.

Towards the end of February this year a small group of parents, children, caretakers and teachers worked together to dig the allotments. During the Easter holiday wooden borders were built around each allotment to contain the soil. All the classes were given an order form to request the types of plants, seeds, watering cans



Nursery children with their teacher Kate Wards and scarecrow.

Photo by Diana Cormack

and tools they wanted. A large range of flowers, vegetables and fruit was chosen, for which some seeds were propagated in the classrooms, while others were planted straight into the ground.

In May, as the plants began to grow, the allotments came under attack from various pests. To ward them off, the children covered the allotments with swinging CDs and plastic bags; they also put up a scarecrow. The nursery even used egg shells and human hair to discourage uninvited guests. Continuing the learning proc-

ess, the young gardeners looked at different ways to feed the plants, using manure and compost to make them produce lots of vegetables, flowers and fruit.

Now the children are looking forward to harvesting and eating their own home-grown produce. They will be able to prepare salads and sandwiches for themselves, and the school kitchen staff are ready to help with anything that needs cooking. This successful venture bodes well for the future as the two schools embark on the new academic year as one.

## Space Youth Café to raise funds for Bobath Centre

The Space Youth Café is organising a sponsored walk on September 22<sup>nd</sup> in aid of the Bobath Centre, which treats children with cerebral palsy.

The young people taking part will walk the five miles to Barnet Brookside Church and then be driven back to the café for a meal and a sleepover.

The recently opened fair-trade café at East Finchley Methodist Church is a safe place for young people aged between 11 and 16 to chill out every Friday night during term time. The café is open to Christians and non-Christians alike. "The young people are quite socially minded and wanted to do something that would help other young people," explained Kirsty Middlemist, who runs the café.

Anyone interested in taking part in the walk, sponsoring a walker or coming along to the café should contact Kirsty on 07879 840817 or at

[youthfandh@aol.com](mailto:youthfandh@aol.com).

"We are delighted that the Space Youth Café has chosen to support us," said Kevin Gillespie, the organiser of the Bobath Fun Run, which takes place a few days later on September 30<sup>th</sup>. To support the Fun Run contact Kevin on 020 8442 2276.

**P.A.music**  
Lighting • Sound • FX • Video

**We Have Moved**

to: Unit 4  
The Old Printworks  
25 Tapster Street  
Barnet, EN5 5TH  
Email: [p.a.music@fsbdial.co.uk](mailto:p.a.music@fsbdial.co.uk)  
Hire & Sales  
020 8440 8008

**M J GRIFFITHS (Builders) Ltd**

New Build  
Extension  
Refurbishment  
Property Maintenance

TEL / FAX 020 8445 1579

**Nicky Sharp**  
BSc (Hons) Ost Med

**Osteopathy Clinic**

for appointments:  
**Tel: 020 8815 9433**

At Nova Dental Care  
260, East End Road, London N2 8AU

**EAST FINCHLEY ELECTRICAL**  
ALWAYS LOWERING PRICES

Energy saving kits now available  
Control appliances at the touch of a button  
SAVE £38 per year by taking appliances out of standby  
NOW IN STOCK

**EIC** LOCAL COUNCIL  
APPROVED CONTRACTOR & RETAILER

For all your electrical needs in the home, we turn up on time, guarantee our work and are unbeatable value.

115 High Road London N2  
Tel: 020 8444 5630 or email [sales@ef-elec.co.uk](mailto:sales@ef-elec.co.uk)

KITCHENER ROAD  
HIGH ROAD  
HUNTINGDON ROAD  
We are here.

**VICTORY AUTO SERVICES**

**Air-Conditioning - Recharge & Servicing**

Mechanical repairs, tyres,  
bodywork, clutches, exhausts  
MOTs by appointment

109 Fortis Green East Finchley London N2 9HR  
Tel: 020 8883 9707 / 0023 Fax: 020 8482 9179

Royal Motor Industry Federation

**HEALING**

**Kathryn Scorza**  
Registered Spiritual Healer

For appointments in East Finchley please call  
**07703 404 839**  
or email  
[kathryn@spqrlondon.co.uk](mailto:kathryn@spqrlondon.co.uk)





Katie Dawbarn (Deputy), Maggie Driscoll (Headteacher) and John Pickering (Deputy) are looking forward to the first term of the new Martin Primary School. Picture by Helen Drake.

## Martin Primary School opens

By Helen Drake

**Thursday 6 September sees the start of a new school in East Finchley, Martin Primary School, created by the amalgamation of Martin Infant School & Nursery and Martin Junior School.**

After consultation with the pupils it was decided to keep the distinctive and popular 'Martin' name for the new school, adding the word 'Primary' to define its new status.

In a letter to parents at the end of the summer term, Maggie Driscoll, Headteacher of Martin Primary School, announced that she will be supported by "a brilliant, highly experienced leader-

ship team". Katie Dawbarn, previously Acting Headteacher of Martin Infant School, and John Pickering, previously Deputy Headteacher of Martin Junior School, have been appointed as Deputy Headteachers. To ease the transition process all classroom staff will be staying with their familiar age groups for the present.

"It is a really exciting time for us all: children, parents, staff and governors," said Ms Driscoll. "The new Martin Primary School provides wonderful opportunities for improving even further the educational standards for all pupils".

### New governors

Elections will be held in the autumn term for all positions on a new governing body for the Primary School to replace the Temporary Governing Body which has managed the amalgamation process over the previous two terms. There will be positions for community, local authority, staff and parent governors.

Improvements are being made to the buildings to accommodate the needs of a single unified school; meanwhile, visitors should use the old infant entrance. The main telephone number for Martin Primary School is 020 8883 1455.

## Come tour with me at Kew

By Linda Dolata

**Last summer the Royal Botanic Gardens, Kew, advertised widely for trainee volunteer guides (something they do rarely) and I was lucky enough to be interviewed and subsequently accepted. My background in biology and plant ecology helped.**

Our training was very intense. Every Friday for 15 weeks we were bombarded with information about Kew's role and importance in plant research, taxonomy, horticulture, its glasshouses and galleries and its unique history. In February I had to put together a tour and be assessed on it. Believe me, it was far more nerve racking than any examinations that I have ever sat but I did pass, and now give three or four tours each month.

Kew is an easy journey from East Finchley, either west along the North Circular (some free parking after 10am and more after 12 noon) or via the Silverlink railway (20 minutes from Kentish Town West) or by Underground.

The gardens have been a World Heritage Site since 2003 and have a unique history as well as being a centre

for scientific research, so there is much more to discover than just beautiful gardens. It's a worthwhile day out at any time of year.

### Kew on the Med

This summer's theme was a Mediterranean Festival, prompted in part by some of the evidence for climatic change, where so many species are coming into leaf and flower unexpectedly early. By studying plants native to the Mediterranean climate we can look at new species to try in our own gardens. Displays of aromatic herbs, of olives and cork oaks capture the summery scene. Close your eyes in Kew's Mediterranean Garden, especially on a sunny day, and the scents and the sounds of bees will transport you to that Greek island or Italian hillside where you were so relaxed.

## Family lifeline needs volunteers

**Home-Start Barnet, the East Finchley-based voluntary organisation that supports families, is looking for more volunteers.**

The scheme, which celebrates its tenth anniversary in the borough this year, recruits and trains volunteers to support families who are going through a difficult time. This can be anything from mothers with postnatal depression to parents who feel isolated, or are struggling to cope with twins or triplets.

The volunteers are matched with families, whom they visit once a week in their own homes, and help in various practical or emotional ways. They accompany the parent on outings, shopping trips or to keep appointments, look after the children while the parent gets on with something else in the home, or simply sit and chat if

that is what is needed. It doesn't sound much, but is a lifeline for some families, and incredibly rewarding for the volunteers themselves.

Home-Start's next (free) preparation course starts on Thursday 20 September, and continues every Thursday for eight weeks (excluding half term) until 15 November. It will run at The Old Barn Community Centre, in Tarling Road, East Finchley, from 9.30 a.m. to 2.30 p.m., allowing time for parents to drop their children off at school, and collect them.

If you can spare a few hours a week to visit a family, ring Home-Start on 020 8371 0674 or email Linda@homestartbarnet.org.

## A crucial role at The Finchley Society

*Robert Winton, Honorary Secretary of The Finchley Society, explains the role of the Chair.*

**The chair of The Finchley Society is the first among equals in an amenity charity run entirely by volunteers. The Society cares for Finchley and Friern Barnet, and is chiefly concerned with building developments, the environment, transport and local history.**

The Chair's principal concerns are looking at members' needs, and ensuring the Society is run prudently and in accordance with its constitution and the requirements of the Charity Commission.

He presides at Society functions, and is the Society's representative whenever necessary.

To do all this calls for someone with experience, time, and the will to serve. In David Smith, the present chair, the Society could hardly have found anyone more suited to the job. He is a founder member and a vice-president, and has taken a leading role in the Society since its foundation in 1971.

He has lived in Finchley all his life. He attended Holy Trinity Primary School and Christ's College, and is a member of Holy Trinity Church. In addition he is greatly interested in local history, having written a brief history of East Finchley, and researched the history of Cromwell Hall. Last February he received a Barnet Civic Award, given to those who have made a significant contribution to the local community.

David Smith is always

trying to recruit more members, emphasising that the more people The Finchley Society has, the stronger its voice in its efforts to ensure Finchley and Friern Barnet develop in the way residents want them to.

You can join for £9 a year. Phone 020 8883 2633.

## Fake strip, fake story

**Police are appealing for information about a man believed to be collecting money fraudulently, claiming it is for Arsenal Football Club's official charity, Treehouse.**

The man, in his 30s, knocks on doors claiming to be an Arsenal reserve or youth player. Dressed in a fake Arsenal strip, he asks for donations for a charity half-time penalty shoot out at the Emirates Stadium. He even tries to prove his identity using Arsenal headed notepaper. Arsenal has received complaints from over 30 people who have been subjected to this scam, one of whom lost £80.

If you believe you have fallen victim to this scam or have any information that could help, please contact your local police station or Crimestoppers on 0800 555 111.

A friendly welcome awaits you

### EAST FINCHLEY METHODIST CHURCH

197 High Road, London N2 (opp. Creighton Ave.)

[www.eastfinchleymethodist.org.uk](http://www.eastfinchleymethodist.org.uk)

**Family service and Junior Church  
Every Sunday at 10.30 a.m.**

Worship Music Social events Wheelchair friendly  
tel: 020 8349 9340 e-mail: [info@eastfinchleymethodist.org.uk](mailto:info@eastfinchleymethodist.org.uk)

### All Saints' Church, Durham Road, East Finchley Church of England

**Sunday masses at 8.00 a.m. and 10.00 a.m.  
Weekday masses at 10.00 a.m.  
Prayer requests are gladly accepted.**

The Parish has a flourishing social life.  
Contact the Vicar, Fr Christopher Hardy,  
on 020 8883 9315.

All Saints' also has a strong musical tradition and an enthusiastic choir of both adults and children.  
Experienced singers are always welcome.  
Contact Geoffrey Hanson on 020 8444 9214.

<http://www.allsaints-eastfinchley.org.uk>





Pauline Moran's garden. Photo by Sheila Armstrong

## Bloomin' marvellous

By Sheila Armstrong

East Finchley has two winners in this year's Barnet in Bloom competition. Pauline Moran, of Juliana Close, won the Most Innovative Garden Category with her wonderfully colourful garden, complete with wind chimes and larger than life butterflies and ladybirds. Pauline, who has taken up gardening only fairly recently, told *THE ARCHER* that her success was due to Baby Bio and a certain amount of luck.

School caretaker Tristan Green, no stranger to the Barnet in Bloom competition, has transformed the Martin School gardens and won the Best School Gardens title in the process. He not only created an allotment style garden for each class at the back of the field but also cleared the overgrown pond, now home to 25 newts. There are plans to

set up a nature trail in a wooded part of the field. The school's gardens are totally organic and they compost their green waste. The school hopes to extend the use of the field and may even get some chickens.

All Barnet's finalists are entered into the London in Bloom competition, which takes place later this year.

## Children make it easy being green

Over the past year, learning about conservation and the environment has been a particular focus for the children at Brookland Infant and Nursery School. This has included making posters, books and leaflets about recycling, and writing to Barnet Council about litter in the local area.

A member of Barnet's Waste and Sustainability team came to the school to talk to the children about the importance of recycling and how they can help. Pupils then began recycling paper at school and encouraging their families to use the black boxes at home for recycling items such as newspapers, bottles, cans, clothes and shoes.

The Mayor of Barnet, Councillor Maureen Braun, visited the school to celebrate

the children's achievements and to present the school with a certificate.

Headteacher Sheila Abbott said: "We are absolutely delighted to have had the opportunity to take part in the Barnet Recycling Challenge. I am so proud of the effort all the children have made."

## East Finchley Arts Festival: a preview

By Festival Director, Geoffrey Hanson

A particular delight of this year's East Finchley Arts Festival will be the concert to be given by world famous soprano and early music specialist Emma Kirkby accompanied by the English Consort of Viols. Emma, recently made a Dame in the Queen's Birthday Honours List, hasn't far to come from her home in Muswell Hill to perform at All Saints' Church in Durham Road, where most Festival events are held.

Elgar in Miniature is the title of the opening concert, a tribute to Elgar in his 150<sup>th</sup> birthday year. The London Ripieno Society, conducted by Festival Director Geoffrey Hanson, concentrate on the small scale and lighter works of the great English composer. *Salut d'amour*, *Chanson Triste*, *Songs from the Bavarian Highlands* and the *Violin Sonata* all feature. If a local connection is needed, Elgar lived for a time in Hampstead and his amanuensis Jaeger, immortalized in the Enigma Variations as *Nimrod*, lived in Muswell Hill.

Two evenings later the London Mozart Players will premiere Hanson's new Piano Concerto, written especially for local pianist Rimantas Vingras.

Martin Primary School are hosting a Recorder Day for children directed by recorder specialist Alan Davis. June Peters will have a story and music for children in the church garden whilst the evergreen, ever-popular Finchley Children's Music Group make their usual appearance.

Jennifer Bate will play a programme of accessible organ music in her lunch hour recital and the acclaimed young members of the Fidelio Piano Quartet return to the Festival with a programme of Mozart, Schumann and Brahms. Jazz lovers will welcome the return of Dave Burman and his London Vintage Jazz Orchestra and the lunch hour recital given by Patrick Naylor and Tim Robinson playing jazz standards and originals by Patrick on guitars.

Drama features with Bruce

Purchase in John Wain's play *Johnson is leaving*. Poets Fleur Adcock and Elaine Feinstein will read from their own work and Rivers of Babylon, a group of singers and instrumentalists, will perform Iraqi Jewish, Arabic, Bene Israel, vintage Bollywood and Israeli songs.

Throughout the Festival there will be an Exhibition of

Art in aid of the North London Hospice.

Full details of the Arts Festival are at [www.eastfinchleyartsfestival.org.uk](http://www.eastfinchleyartsfestival.org.uk).

Brochures will be delivered throughout East Finchley early in September but should you be missed ring 020 8444 9214 and we will post a brochure to you.

### Festival programme:

#### MUSIC

Thurs 4 Oct: 7.30pm London Ripieno Society: *Elgar in Miniature*

Fri 5 Oct: 7.30pm Songs of Enchantment: Emma Kirkby & The English Consort of Viols

Sat 6 Oct: 12.30pm Lunch Hour Recital: Jennifer Bate - Organ

Sat 6 Oct: 7.30pm London Mozart Players with Rimantas Vingras - Piano

Sun 7 Oct: 7.30pm Finchley Children's Music Group

Thurs 11 Oct: 7.30pm Rivers of Babylon

Sat 13 Oct: 12.30pm Lunch Hour Recital: Patrick Naylor & Tim Robinson - Guitars

Sat 13 Oct: 7.30pm Fidelio Piano Quartet

Sun 14 Oct: 7.30pm London Vintage Jazz Orchestra

#### POETRY

Wed 10 Oct: 7.30pm Fleur Adcock & Elaine Feinstein read from their work.

#### DRAMA

Fri 12 Oct: 7.30pm Bruce Purchase in *'Johnson is Leaving'*.

#### CHILDREN'S EVENTS

Tues 9 Oct: 7.30pm Recorder Day with Alan Davis at Martin Primary School

Sun 14 Oct: 11.30am Children's Story Time with internationally-known storyteller June Peters in church garden if fine, in church hall if wet.

#### ART EXHIBITION

Throughout the Festival, by London & International Artists in aid of the North London Hospice.

Open Evening Wed 3 Oct: 6.30pm-8.30pm. Open during Rehearsals, evening performances and weekends between 11am and 5pm.

All events, except recorder day, held at All Saints' Church, Durham Road, N2

Box Office: Les Aldrich, 98 Fortis Green Road, N10 tel: 8883 5631

Advance Booking opens Monday Sept 3<sup>rd</sup>.

[www.eastfinchleyartsfestival.org.uk](http://www.eastfinchleyartsfestival.org.uk)

**Lazooli**

Vintage, Retro and  
New Fashion

46 High Road  
East Finchley  
London • N2 9PJ  
020 8885 1117

### COMPLEMENTARY THERAPIES

Utopia Health & Beauty Clinic

At Utopia we offer an extensive range of complementary therapies and holistic treatments that can help with many common ailments, such as...

- Back pain
- Sciatica
- Anxiety & Depression
- Migraines & Congestion
- Injuries
- Digestive Disorders
- Hormonal Imbalances
- Allergies/Asthma/Hayfever
- Sleep disorders
- Pregnancy & Fertility

1A LEICESTER MEWS  
EAST FINCHLEY  
LONDON, N2 9EJ

**Tel 0208 444 4226**

**Josephines**  
EXPERTS IN CREATIVE FLORAL DESIGN

Freshest Flowers - Stylish Designs - Great Prices - Same Day Delivery\*  
No excuses for missing that special occasion!

\*orders for same day national deliveries must be made before 1pm  
[www.josephinesflowers.co.uk](http://www.josephinesflowers.co.uk) Tel: 020 8444 9569/020 8883 3598  
60 High Rd, East Finchley, London N2 9PN

**fiori**

Stylish flowers  
Unusual plants  
Beautiful accessories

**020 8883 8152**  
127 High Rd, East Finchley, N2 8AJ





"Get the message?" Sippy and Chris at Tony's Continental. Photo by Diana Cormack

## Zippy of East Finchley

By Diana Cormack

Over the years one particular resident of East Finchley has become a regular contributor to the Clive Bull Show on LBC radio. Despite hearing her views and comments and using her quizzes, songs and jingles for a long time, the show's host still gets her name wrong, calling her Zippy. We know her better as *THE ARCHER*'s own Sippy Azizollah.

In fact, it was LBC that brought Sippy to *THE ARCHER*. Daphne Chamberlain and I had often heard her on Clive's programme and were desperate to find this local phone-in fan. One afternoon as I was delivering the paper on the High Road, a lady in a wheelchair asked if she could have a copy. We got talking and when she told me her name I shrieked, "Not Sippy of East Finchley!"

Since then *THE ARCHER* has featured many of Sippy's exploits. Regular readers will know that, despite bouts of ill health, she has raised thousands of pounds for various charities. Her active brain is always coming up with new ideas and her enthusiasm is catching.

Last month LBC listeners were asked to find novel ways of advertising the station, with prizes on offer for the most innovative. Sippy's first idea was to sit in Brent Cross wearing a suitably

decorated hat. This did not attract great attention, though Sippy was pleased to be visited by other listeners who had heard on the radio that she would be there. Then she approached Tony's Continental at 140 High Road, where Chris used price tags to help carry out her second idea (see photo).

As well as being recognised in East Finchley, Sippy is often greeted in other places by people who are familiar with her voice. A few vocal locals phone LBC programmes from time to time, but they'll have a long way to go if they want to catch up with Sippy's contributions.

### The Archer needs a volunteer distributor for Bancroft Avenue

Distribution takes place once a month. A typical round takes 30-45 mins to deliver. For details contact 020 8883 0433 or [the-archer@lineone.net](mailto:the-archer@lineone.net)

## Flying triangle in skies over N2

By Craig Johnson

On the evening of 30 July, I was photographing the night sky when I noticed four strange lights in the sky. One was flaring bright orange and was surrounded by three others; they moved quickly from left to right with no sound. This lasted for 20 minutes.

My video footage shows a triangle formation flying quite low over our suburban area. The official response from the police was that they had no incidents alerted to them from air traffic control that night.

The Ministry of Defence examines any reports of 'unidentified flying objects' to establish whether the United Kingdom's air space might have been compromised by hostile or unauthorized air activity.

Directorate of Air Staff Julie Monk said: "Unless there is evidence of a potential threat to the United Kingdom from an external source, and to date no 'UFO' report has revealed such evidence, we do not attempt to identify the precise nature of each sighting reported to us."

This means the list of UFOs, just released from the MoD archives, has never been properly investigated by defence experts. The MoD states publicly that it remains open-minded about UFOs and extraterrestrial life forms but has no evidence to support the existence of either.

Julie Monk added: "With regard to your particular observation, I can confirm that we received no other reports of UFO sightings for 30 July 2007 from anywhere in the UK. We are satisfied that there is no corroborating evidence to suggest that the United Kingdom's airspace was breached by unauthorized aircraft."



## THE ARCHER mixes with the stars

When *ARCHER* contributor Janet Maitland took a trip to Los Angeles recently, she left her film scripts at home and took a copy of our newspaper instead. The reaction of the Hollywood moguls is not known for sure but we're expecting the movie offers to come flooding in any minute now. Send your own pictures of *THE ARCHER* on its travels to [the-archer@lineone.net](mailto:the-archer@lineone.net) or to *THE ARCHER*, PO Box 3699, London N2 8JA.

## The floods: a traveller's tale

By Dawn Powell

As the aeroplane came towards us at alarming speed, it was then that I knew I wouldn't be going home that day. The plane, thankfully, landed safely nearby at Oxford Airport but it was the last straw in what had been a disastrous day.

I'd left East Finchley at 9am during the period of floods in July to catch a train from Paddington to my hometown of Malvern. I managed to get as far as the Gloucestershire village of Moreton-in-Marsh when all the passengers were told to get off the train because the line was flooded.

Our collective hearts sank on learning there would be no replacement train in either direction and we would be lucky if a replacement bus managed to reach the station. As I paced the ticket office hoping I wouldn't have to spend the night there, I noticed that a river of water was making its way to the station. Suddenly, I realised sleeping at the station would be the least of my worries: having to swim my way out was a much bigger concern. Thankfully, at this point, the bus turned up.

In the next hour and a half, the somewhat miraculous bus driver managed to negotiate the coach through several lakes of water to get to us to Oxford train station. During this time, we were stuck in several mile-long traffic jams (including one outside Oxford Airport, resulting in that panic-inducing plane incident) and heard that the station we had left behind was now

completely flooded.

Weary and extremely hungry, we eventually made it to Oxford and were told to forget going anywhere other than London. Resigned to my fate, I made my way back to East Finchley. Arriving at my house at 7pm, a mere 10 hours after I'd left it, I decided weekends away were seriously overrated.

## Look after your volunteers

Volunteers are the most valuable asset of any small charity and need to feel appreciated.

That was the message from Robert Winton, secretary of The Finchley Society, giving a special talk about what goes on behind the scenes in the society.

He added: "The most important thing to remember about them is that they are volunteers and can leave at any moment."

The Finchley Society's archive group is cataloguing its wealth of historical material with the aim of making it available for general public enquiries.

A project is also under way to set up boards in front of listed buildings in Finchley and Friern Barnet explaining their history.

Ethical, co-operative and democratic

Savings invested in local area

Free Life insurance



## Finchley Credit Union

Green Man  
Community Centre  
Strawberry Vale  
N2 9BA

### Opening Times

Monday	10-8.30pm
Tuesday	10-4pm
Wednesday	10-4pm
Thursday	5-8.30pm
Saturday	10-4pm

Find out more:  
[www.ficu.ik.com](http://www.ficu.ik.com)  
[fcu@eastfinchley.co.uk](mailto:fcu@eastfinchley.co.uk)  
020 8883 4916

Authorised and regulated by  
the FSA. Firm no. 213679

The fastest growing financial movement in the world

## The Spike Milligan Statue Fund

presents their  
Grand Fund-Raising

## Quiz

29th September: 7.30pm

Licenced Bar



at  
The  
East Finchley  
Constitutional  
Club

The Walks N2 (near Park Gate)

For tickets at £5 each, call  
020 8346 5258 / 9811





# Four years in Greece

By Sallie Rose

**In 2003 my children left home. I was practising as a homeopath and ran a yoga school with my daughter Sunnah in East Finchley. A single parent for the last 25 years, I had always harboured a secret dream to buy some land in Greece and write from my little window over the sea. I decided to take a sabbatical.**

On mainland Greece near Kalamata, famous for its olive production, I found an olive grove in a small mountain village with the most spectacular view of the sea. It was beautiful but isolated, without a telephone or television, and only the sea for company.

As I did not feel ready to build a house I bought a caravan and had a 16ft square Mongolian yurt shipped over to live in. Despite the cold winters, the felt insulation and central wood fire kept me warm. I was the proud owner of 85 olive trees and I planted 25 fruit trees.

I learnt to feed, prune and pick the olives and take them to the local co-operative olive press where they were squeezed into pure, virgin organic oil. I husbanded chickens, geese and ducks, and for a while cared for a homeless donkey.

The neighbours were unbelievably welcoming, feeding me most nights and constantly arriving with eggs, chickens and excess vegetables. Before



Sallie's yurt. Picture by Sallie Rose.

Easter I baked biscuits with them at dawn in their wood ovens. They taught me how to make cheese in huge pots on outside fires and how to identify medicinal herbs.

Before I knew it, I had fallen in love with a man from the village and we spent four years living together. Sadly the relationship ended and I realised that, despite the beauty and tranquillity of the place, I missed my

family and friends too much to stay. Before leaving, I published a collection of poems, *Echoes of the Mani*, which describes my time there.

I recently returned to my cottage in East Finchley and resumed my practice as a homeopath and a teacher of yoga and meditation. Back in Greece, however, the olive grove still flourishes. I will visit in November for the harvest.



Rosie Jones with her recycled jewellery.

## A load of old rubbish

By Diana Cormack

**One of the stalls which created a lot of interest at the East Finchley Community Festival back in June was run by 19-year-old Rosie Jones. Like some others she was selling jewellery, but this was jewellery with a difference, for it was all made from recycled materials.**

At first glance the bracelets, cuffs, necklaces and pendants did look slightly unusual and on closer examination it was possible to pick out objects such as stamps, container tops and even Lego blocks which Rosie had used in her creations. Always on the look out for things to make use of, Rosie finds some scattered in the street or comes across them in charity shops. She also makes greetings cards - from recyclable material, of course.

Rosie's father lives in Long Lane and this was her first foray into selling her home-made products. Whether she will be able to continue with

it when she starts her studies at Cambridge University is as yet not known.

Riverford



award winning  
organic vegetable boxes  
delivered to your door  
now available  
order today!  
0845 600 2311 local call  
www.riverford.co.uk

## Feed the goat first

By Sallie Rose

'There's something I need to say to you dear,' he sits down and lights a cigarette. I close my notebook and replace my pen 'but I fear it's something I may regret.'

'Your priorities are all wrong,' he says. 'You take a pen before you wash a dish, head for the hills before you mop the floor, can you imagine if my poor mother saw?'

You are not doing your job well I feel, a poem cannot pour food down my throat a novella does not get the olives picked, a sonnet does not milk the goat.

Wake up and do your homely duties first, then if there's time whilst there's still light, and all food is cooked and animals are fed, then my dear, by all means write.'

I stand up and walk to the sink and pause, I pick up the plate of green beans and bread, I remove his cigarette from his hand And pour the food right over his head.



## Tarted up taxi to tie the knot

**This black cab was spotted parked outside the florist and gift shop 2 Destino, 128 High Road, where it was being decorated for a civil ceremony at the end of July, with big pink ribbons giving the taxi a touch of romance. Our best wishes to the happy couple.**



brera gardens

- garden design
- maintenance
- hard landscaping
- interior plants & containers
- soft landscaping
- East Finchley based

Mob. 07939 557 934

Tel. 020 8365 3615



CASA PEPE  
Café & Licenced Restaurant

Evening Menu

Now Open Evenings

89, High Rd. East Finchley  
020 8444 9262

Klages Plumbing & Heating Agency LTD.

CONTACT TELEPHONE No: 020 8346 7218 / 8636

**KLAGE**

A NAME IN PLUMBING FOR OVER 40 YEARS

**Eastfinchleyclinic**

Wendy Longworth & Associates physiotherapy practice offers a variety of treatments at the clinic, or off-site, in patients homes, nursing homes, private hospitals and other organisations.

- Back Pain
- Neck Pain
- Whiplash Injury
- Sciatica
- Sports Injury
- Frozen Shoulder
- Arthritis
- Tennis Elbow
- Sprain or Strain
- Rehabilitation
- Neurological
- Stroke

www.eastfinchleyclinic.co.uk

East Finchley Clinic  
2-3 Bedford Mews  
Bedford Road  
London N2 9DF

**020 8883 5888**  
FAX: 020 8444 8874

Rashmi  
Makwana  
Designer and  
Seamstress



My services include:  
**A comprehensive alteration service**  
**Duplicating your original favourites**  
**Special Occasional wear**

With 15 years experience in high end fashion, my attention to detail ensures the perfect fit, quality and styling for all your wardrobe requirements



Please call  
me on  
**07956918865**  
for a  
consultation





## Bishop Douglass Summer Camp

By Brian Lenane

It's been an eventful summer at Bishop Douglass School. Funding from Barnet Children's Services made it possible for the school to organise and run a free summer camp for the local and surrounding community. This further promotes headteacher Angela Murphy's aim of strengthening the links between the school and the locality.

The camp was available for nine to 13-year-olds in the area, and provided an excellent opportunity to encourage worthwhile activities for youngsters during their summer holidays. Activities ranged from multi-sports (rounders, tennis, basketball and trampolining) to arts and crafts. With weekly trips to London's major museums and the local Phoenix cinema, the camp was enjoyed by all who attended.

Local children made the most of this great opportunity, with some showing high enthusiasm for sports and culture. Elmina Ahmeti, aged 10, from East Finchley said: "I think that it's good because they take us

to interesting places. It's much better than staying at home doing nothing except for sleeping and watching TV."

Aisha Namutebi said: "I think summer camp is fun because you get to meet new people and to do different sports."

Efosa Igbinoba said: "I love summer camp because it gives us a chance to meet new people and to interact with them, support each other and play with one another."

Camp organisers Brian Lenane, Stephen O'Brien and Robina Spinks enjoyed giving a large number of children four weeks of new experiences and a lot of fun.



Bishop Douglass School sports hall transformed. Photo by Diana Cormack

## Hindu leaders of the future

From 27 July to 5 August, Bishop Douglass RC School was home to 200 youngsters from the Hindu community who had come from as far away as Yorkshire and Surrey.

The residential event's purpose was to impart a cultural education to the young people who would return to their homes having had a practical experience promoting good citizenship, healthy living, and excellence in education.

The main organiser of the event and North London Secretary of HSS (Hindu Swayam-sevak Sangh) Mr Mayur Shah, said: "We are delighted to have been able to bring so many kids to Barnet. Through the support of the council, the school and the local community we've

managed to deliver a first class experience."

On the support from the local community, Mr Shah added: "We had to feed 200 kids three times a day and the response we had from our community in cooking 1,000 chappatis and all other food on a daily basis made us proud of the public spirit of people in East Finchley."

The final day on Sunday 5 August saw a turnout of 600 guests who observed examples of the activities and heard of the experiences of the participants.

## Sibling success in Barnet Open

By Sheila Armstrong

Two young local painters exhibited for the first time this summer at the artsdepot in North Finchley. Brother and sister Kit and Brekke Friend, both of whom attended Holy Trinity Primary School in East Finchley, have had pictures in this year's Barnet Open Art Exhibition.

After Holy Trinity, both attended Hendon School and are now students at Central St Martins. Kit is in his final year on the Arts Design and Environment BA. Brekke starts there in the autumn on the Foundation Course.



Kit and Brekke Friend with their paintings. Photo by Melvyn Friend.

## YOUNG ARCHER

### Back to school jokes

**Teacher:** Why are you so late?

**Sam:** Because of the sign.

**Teacher:** What sign?

**Sam:** The one that says "School ahead, go slow".

**Teacher:** Why are you doing your maths on the floor, Pat?

**Pat:** Because you told me to do it without tables, Miss.

**Teacher:** Chris, how do you spell "crocodile"?

**Chris:** K-R-O-K-O-D-A-I-L.

**Teacher:** No, that's wrong.

**Chris:** Maybe it's wrong, but you asked me how I spell it.

**Teacher:** Gerry, name one important thing we have today that we didn't have ten years ago.

**Gerry:** Me!

**Teacher:** Kelly, why do you always get so dirty?

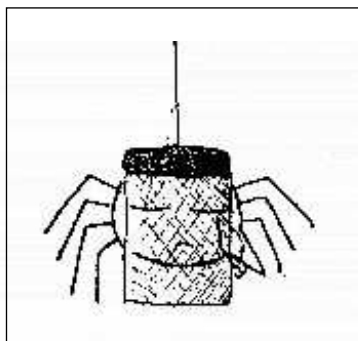
**Kelly:** Because I'm closer to the ground than you are, Sir.

**Teacher:** What do you call a person who keeps on talking when you are no longer interested?

**Pupil:** A teacher!

## Spiderama

by Ashley



Black widow spider

## RSPCA summer news

By Caroline Broome

**Warmer weather brings with it the risk of animals overheating or even dying in unventilated hot cars. If you spot an animal that has been left unattended in a vehicle, please report your concerns to the RSPCA on 0870 5555 999.**

Also evident at this time of year are young birds and animals that may be taking their first faltering steps into the big wide world. Don't panic if you see a young wild animal on its own. If you are worried go right away from the site and return in an hour or so; you will almost certainly find that the natural parents have taken care of the youngster. If, however, you think a bird or animal is genuinely orphaned, please report it to the RSPCA on the same number.

The RSPCA Small Animal Clinic is located in Park Road, East Finchley, N2 8EX. Clinic opening hours have been extended. As always, surgeries are held on Monday and

Thursday evenings but doors now open at 5.30pm and consultations start at the earlier time of 6pm and finish at 7.30pm.

From September we are welcoming two new vets to our team. No appointments are necessary; just bring your pet along to one of our regular clinic sessions, or telephone 020 8365 3910 during clinic hours for more details.

Finally, many thanks for all the support of local residents who visited our RSPCA stand at the recent East Finchley Festival in Cherry Tree Wood. We hope to see you all again at our autumn fund raising event to be held in the RSPCA Clinic: more details of that in future issues of *THE ARCHER*.

Invitation to explore yourself!



Create Magic in your life

Change your beliefs and change your life. Find out how. Come to a free 'Introductory Talk' about Avatar®, or buy the book 'Living Deliberately' by Harry Palmer

Contact: Julie Armitage.

Tel: 020 8445 4559

Mobile 07802702852

Email [Julie@avatar-london.co.uk](mailto:Julie@avatar-london.co.uk)

[www.avatar-london.co.uk](http://www.avatar-london.co.uk)

Avatar®, is a registered trademark of Star's Edge, Inc. All rights reserved

## East Finchley Baptist Church

Just off the High Road in Creighton Avenue N2

Sundays at 11.00 am and 6.30 pm

For more information  
please contact the Church Office  
Tel: 8883 1544 (Minister: Simon Dyke)

Visitors always welcome

## St. Johns Christian Spiritualist Church

4 Woodberry Grove - North Finchley

Just behind Homebase

phone 020 8446 3544

Services: Sunday 6:30 pm - Thursday 7:30 pm

Spiritual healing and Private Readings every Tuesday 1 - 3 pm

**Different clairvoyant mediums every week!!**

Regular Workshops - Development circles - Friendly atmosphere - childrens corner

**ALL WELCOME**





## How healthy is the GI Diet?

By our nutrition expert Judy Watson

The GI Diet has overtaken the Atkins Diet. There are books galore and recipes on how to eat the GI way. I believe it is a much healthier way to eat than the Atkins Diet, which can give you constipation and bad breath: not very sociable. However, there are still rules to follow with the GI Diet and some food information can mislead.

So what does GI mean? The initials stand for Glycemic Index which refers to how quickly carbohydrates (foods containing sugar and starch) are released into the bloodstream.

Foods with high glucose have a high index rating up to 100. This is acceptable in small amounts over the day but too much glucose results in high blood sugar. Then insulin removes most of it, leaving you with a low blood sugar level and feeling hungry again.

So by eating foods with a low GI - mainly below 50 - such as nuts, beans and yoghurt, your body will release sugar more slowly, making you feel fuller for longer.

GI does not take into account quality and quantity of a food; examples are chocolate and baked potatoes. Potatoes

have a higher GI than chocolate but overall the potatoes are the healthier food. You can reduce the GI effect of the baked potato by having a small portion and combining it with tuna and salad.

To get the benefits of a low GI from chocolate you can only eat three squares! Be careful with biscuits claiming to have a low GI, particularly if you are tempted to eat more than a couple.

As a final tip, most low-GI foods are also high in fibre or contain a significant amount of protein which promotes weight loss and energy and helps lift your spirits.

For more tips on dieting and improving energy levels call Judy on 07904 335763 or visit [www.judywatsonnutritionist.co.uk](http://www.judywatsonnutritionist.co.uk).

## Eh? What? Pardon?

By John Dearing

Have you ever felt that people today mumble more than they used to? Are conversations in crowded, noisy places a real trial? Do you often have to ask someone to repeat what they just said?

Now you can find out whether you really have a hearing problem by taking a simple telephone test. Just call the RNID's telephone hearing check on 0845 600 5555. After keying in your age and gender, you listen to a series of numbers read out in blocks of three; you respond by keying those numbers on your telephone keypad. Background noise increases steadily as the test goes on, until you are really just guessing. At the end, you are told the result, which in my case was that my hearing is "within normal limits".

If you do find you have a hearing loss many practical changes can be made to your working environment,

including using an amplified telephone, or installing loop systems to help hearing aid users. These simple solutions will let you continue performing at your best and help you cope with your hearing loss.

### Don't be embarrassed

RNID's 'Breaking the Sound Barrier' campaign aims to reach the 4 million people in the UK who are losing their hearing but doing nothing about it. A recent Ipsos MORI survey shows that 46% of adults in Britain believe that embarrassment about not being able to hear prevents people with hearing difficulties discussing their problem with others, or having a hearing test.

## Epidemic of street clutter

By John Dearing

The Borough of Kensington & Chelsea's 'Streetscape' experiment, begun in 2003, has received much positive attention in the media. The scheme saw many railings, signposts and road markings being removed from Kensington High Street, and has resulted in a drop in accidents of around 44%.

This process is now being implemented in Earls Court, and South Kensington where, in Exhibition Road, junctions are being modified to facilitate the removal of traffic lights and other controls, to enable the area's involvement in the Olympics.

The policy has now become fashionable in a number of London boroughs, including Islington and our own Barnet, where Brent Street and Tally Ho corner, amongst other places, have been de-cluttered, to the benefit of pedestrians, motorists, shoppers and residents.

### East Finchley still cluttered

However, in that distant outpost of Barnet called East Finchley, the *status quo* still rules, as people who have to use the High Road (especially those with mobility or sight difficulties) will attest.

One of the worst areas is near Budgens supermarket where, to add insult to injury, the Orange mobile phone network proposes to erect a mast in the pedestrian area. The company's application, has been rejected once already; however, initial reactions from the council do not give confidence that the proposal will be rejected this time.

## Flower seller with famous connections

By John Lawrence

Jo Walker has been selling flowers every Saturday and Sunday at her stall in the High Road for the past two years, but her links to the trade go back almost 200 years.



Keeping it in the family: Jo Walker at her flower stall opposite the St Pancras & Islington cemetery.

Jo can trace costermongers and flower sellers back through many generations of her London family. One is said to have a very famous connection indeed.

Her great-great-great-grandmother was called Eliza and the story in the Walker family is that she once met playwright George Bernard Shaw and became the inspiration for the character of Cockney flower girl Eliza Doolittle in *Pygmalion* and later *My Fair Lady*.

"There's always been an Eliza in every generation of my family and this story has been handed down through many years," says Jo.

Jo herself grew up with actor Phil Daniels, recently in East Enders, and is good friends with Spandau Ballet singer Tony Hadley. Recently, actress Lorraine Chase stopped to buy an armful of bouquets shortly before starting filming again on *Emmerdale*.

### A friendly patch

Jo has worked for 30 years as

a florist, starting with a three-year apprenticeship in the City with the Queen's florist Longmans.

Her current stall opposite the entrance to St Pancras and Islington Cemetery has been in the family for about the same time, having been run previously by Johnny Murphy.

Apart from a nasty experience two years ago when she was attacked and robbed at the stall, Jo says it is a friendly patch to work.

"I get on very well with the people round here. A lovely lady in the flats behind here comes down and gives me food and someone else often brings a flask of tea. You need it sometimes, standing here in all weathers."

So what of the next 30 years? Her 13-year-old son Terry works with her most weekends and her daughter Georgie also helps so there's every chance flower selling will stay in the Walker family for years to come.

### Cree Godfrey Wood Solicitors

Commissioners for Oaths

Hours: 9.30am to 5.30pm.

email: [admin@creegodfreyandwood.co.uk](mailto:admin@creegodfreyandwood.co.uk)

28 High Road, London N2 9PJ

Tel: 020 8883 9414 / 9496 / 0989

[www.creegodfreyandwood.co.uk](http://www.creegodfreyandwood.co.uk)

### Need Computer Help?

### Website Designed?

PC Broken,

Broadband, Mac?

Friendly, Experienced & Qualified. For a Free Quote

call Andy on **07963 256 275** or go to **www.AndysWeb.net**

### LOOKING FOR A CAT

Many cats and kittens needing good homes; some single, some in pairs.

If you think you can help get in touch with the local cat charity

ANIMAL AID AND ADVICE  
48 HIGH ROAD EAST FINCHLEY  
OR PHONE 7607 1723

### LOOKING FOR HOMES



## THE WINDSOR CASTLE

THE WALKS, CHURCH LANE, EAST FINCHLEY, LONDON N2 8DL

PHONE 020 8883 5763

\* COMFORTABLE, CLEAN PUB

\* FRIENDLY STAFF & LANDLORD

\* SECLUDED BEER GARDEN

\* GOOD VALUE LUNCH & EVENING FOOD

\* TRADITIONAL SUNDAY ROAST LUNCHES

\* GOOD SELECTION OF McMULLENS QUALITY CASK ALES AVAILABLE

HOURS: MONDAY-FRIDAY 11:30AM-2PM, REOPENING 4:30PM. SATURDAY & SUNDAY OPEN THROUGH THE AFTERNOON

# the cherry tree

Elegant and inspired gifts for all occasions

172, High Road, East Finchley N2 9AS Tel: 020 8883 4369

[info@thecherrytreeuk.co.uk](mailto:info@thecherrytreeuk.co.uk) [www.thecherrytreeuk.co.uk](http://www.thecherrytreeuk.co.uk)

**NOW OPEN ON SUNDAYS**  
FROM 10.30 TILL 1PM

Cards &  
Wrapping Paper

VIP Bags

Designers Guild

Lip Lingerie

Hope & Greenwood  
Organic Chocolates

LSA Glassware

True Grace Candles

Susan Suell Jewellery





## Regular Events

### SPORT & FITNESS

- ❖ **Finchley & Hornsey Ramblers Group** Call Vivien 8883 8190
- ❖ **Glebelands Indoor Bowls Club**, Summers Lane N12. New and experienced bowlers welcome.
- ❖ **Keep fit for the Retired** on Wednesdays, Christ Church N12. Call Bridie 8883 5269
- ❖ **Muswell Hill Bowling Club**, Kings Ave, N10. New & experienced bowlers welcome. Tel: 8883 1178.
- ❖ **Pilates** in East Finchley, qualified teacher. Contact Dee on 8883 7029
- ❖ **Pilates class** Wednesdays, 2.15-3.15pm at Youth Theatre, N2. Ring Penny Hill 8444 2882.
- ❖ **Tae Kwon Do** at The Green Man Thursdays 7-9pm 07949 612 706
- ❖ **Tennis club** with four clay courts off Southern Road. Call 8883 7723.
- ❖ **Wood Walk**, meet 10am at Cherry Tree Wood cafe on 1st & 2nd Mon of month for 1 hr walk, Call 8883 8750.
- ❖ **Yoga, breathing & relaxation**. Weekly drop-in classes - N2, N6, N10. Phone Judy on 8444 7783.
- ❖ **Yoga**, pregnancy yoga, meditation classes at Holy Trinity Church. Call Sunnah 07941 321 772 or visit [www.stretchingpeople.co.uk](http://www.stretchingpeople.co.uk)

### DANCE, DRAMA & CREATIVE ARTS

- ❖ **Art Classes**. For info call Henry on 020 8888 5133.
- ❖ **Ballroom Dance Classes**, Wednesdays. Beginners 7.30pm, Improvers 8.30pm. St Mary's Church Hall, Finchley. 020 8444 0280.
- ❖ **Club Dramatika** drama club for kids. Call 8883 7110.
- ❖ **Creative writing classes** in informal, friendly atmosphere. Tel Sallie Rose 0208 444 7217
- ❖ **East Finchley Writers Group** Creative writing 6.30pm every Weds at the Old White Lion. Contact Carola 8883 5808 or Lilian 8444 1793.
- ❖ **East Finchley Writing Workshops**. poetry writing monthly on Saturdays. Contact Dennis Evans 8346 9528.
- ❖ **Line dancing** Tuesdays from 8.30pm at The Constitutional Club. Call Maureen 8440 8530.
- ❖ **Memory Lane Singing Club** - a communal singing club. Call Idit Gold 8458 4508.
- ❖ **Over 50s Tea Dance** at Christ Church, North Finchley. Every Weds, 1pm. 020 8444 0280.
- ❖ **Pottery Class** for mothers & toddlers, Call Celia Holmes 8444 8702
- ❖ **Learn to sing** at Finchley Methodist Church. Call 8883 4070 for info.
- ❖ **Street Dance** every Tuesday at Old Barn for children of various ages Contact Lorna 07976 203669.
- ❖ **Symphonic Wind Orchestra** Contact Caroline Egan 8340 2706
- ❖ **Tap Dance** for children beginning at Old Barn every Monday, Contact Sharon 8349 4613

### CLUBS & SOCIAL

- ❖ **Bingo Club** Mondays 7-9 pm, Green Man Centre, Contact: Jan 8815 5459
- ❖ **Contact Lunch Club** Tuesdays at the Green Man. Call 8444 1162 to book.
- ❖ **East Finchley National Childbirth Trust** contact Phoebe on 8349 0388.
- ❖ **Finchley & District Philatelic Society**, Contact Brian 8444 3251
- ❖ **Finchley Jazz Club** 3 & 17 Sept, 1, 15 & 29 Oct at 8pm, Wilf Slack Cricket Pavilion, East End Rd, N3.
- ❖ **Friendly Rubber Bridge** at The Old Barn. Contact 8349 4613
- ❖ **Friends of Cherry Tree Wood**. [www.cherrytreewood.co.uk](http://www.cherrytreewood.co.uk) or call 020 8883 7544.
- ❖ **Haringey Recorded Music Society** informal meetings locally. Call David Mouldon on 8361 1696.
- ❖ **Highgate Film Society**, contact Admin Office 8340 3343 or email: [admin@hlsi.net](mailto:admin@hlsi.net)
- ❖ **North London Bridge Club**, Muswell Hill. Contact 8348 3495
- ❖ **Muswell Hill and Highgate Pensioners' Action Group** Call Bob Cottingham on 8444 7635.
- ❖ **Muswell Hill Tetherdown Bridge**, contact 8883 4390
- ❖ **Old Barn pre-school club**, contact 8349 4613/1961
- ❖ **Parent & Toddler Group**, Green Man Centre, Julia 8444 2276
- ❖ **Probus Lunch Club** for retired professionals. Call John 8883 8114.
- ❖ **Stepping Stones**, interactive play session for under 3's. Karen 07957 278860.
- ❖ **SwampRock** events feature a different band each month. See [www.swamprock.org.uk](http://www.swamprock.org.uk)



Institute Principal Fay Naylor (4<sup>th</sup> left) and Paul Homer, Chief Executive of The Phoenix, (2<sup>nd</sup> left) with tutors from the Institute. Photo by Geoff Stocker.

## Good neighbours

**Tutors in Arts & Creative Studies at the Institute showed examples of their work in a recent exhibition at The Phoenix Cinema. This was the second collaboration between these near neighbours, the Institute having moved to 11 High Road, just across the road from the Phoenix.**

They hope that this will have inspired many new students to enrol for courses at the Institute. It offers the broadest range of classes in North London, from

Arabic to Furniture Restoration, and from Health Walking to Computer Studies.

Call in to find out more, or telephone 020 8829 4141.

## Healing hands at the

### Muswell Hill Festival

**Hands-on healing will be offered at the Muswell Hill Festival this year, courtesy of the Soul Therapy Centre, which will bring its healing training clinic to Cherry Tree Wood for the day on 16 September.**

Practitioners and students will give spiritual healing to all-comers on a drop-in basis, in exchange for donations to the Hornsey Trust. All proceeds will go directly towards helping children with cerebral palsy.

The Soul Therapy Centre in Muswell Hill is a group of internationally respected psychologists, psychotherapists and healers. Their aim is to provide healing at every level of existence: mind, body and soul.

Established in 1996, the Soul Therapy Centre combines the basics of systemic psychotherapy and CBT skills with spiritual healing, Feng Shui and other energy techniques. The Centre takes a small number of students each year on a part-time basis for its annual Foundation Diploma Course.

For more information, contact Ingrid Collinson 0208883 8562 or Kathryn Scorza on 0208444 5498, or go to [www.soul-therapy.co.uk](http://www.soul-therapy.co.uk).

## Theatre in the Suburb

By Daphne Chamberlain

**Fans of open air theatre don't have to take their umbrellas to Regent's Park. Little Oak Wood, Hampstead Garden Suburb, has its own brand of outdoor magic. What's more, umbrellas appeared there on only one night of *The Tempest*, this year's July production.**

In June, *Dame Henrietta's Dream*, written by a Dame Edna Everage scriptwriter, Ian Davidson, also played to packed houses. A pageant for the Suburb's centenary, it celebrated the life and times of Henrietta Barnett. Because she loathed drink as a cause of poverty and child neglect, the Suburb has never had a pub. It has, however, always had a theatre. Its first dramatic society was formed in 1908, with about 20 members.

Eventually, the Play and Pageant Union and the Speedwell Players combined into what is now known as the Garden Suburb Theatre, with over 200 members.

Actors and audiences don't have to be fresh air fiends. There are several indoor performances each year, usually at Henrietta Barnett School or Upstairs at the Gatehouse, though the Theatre

has brought back trophies from as far afield as the Isle of Man and Wakefield. The theatre's president is Donald Sinden, and costumier Frances Musker used to lecture on costume at the V & A Museum. Some members date back to the 1920s and 30s, but others are schoolchildren, many of whom had a whale of a time in *Dame Henrietta's Dream*. London Metropolitan Archives hold a mass of information about the Garden Suburb Theatre, which anyone can view or add to. If you have any likely material to donate, please email the theatre first. Email details and further information are on [www.garden-suburb-theatre.org.uk](http://www.garden-suburb-theatre.org.uk). Membership information is also available on 020 8346 4448.

Meanwhile, watch out for "*Pygmalion*", to be staged at the Henrietta Barnett School in October.

## Experiences in a lift

By Daphne Chamberlain

**You've had your breakfast, you're off to work, you step into the lift in your tower block...what happens next? Community Focus Drama Group came up with an unexpected answer at the artsdepot in North Finchley in July.**

This group of disabled adults devised, wrote and performed a 45-minute play *What Goes Up Must Come Down*. It was the result of a year's work, and Alastair Reid, their director, stressed that everyone taking part was of equal importance. He said: "I'm simply the facilitator," adding that what we were about to see was rather weird.

Weird, tense, the stuff of dreams and nightmares it certainly was, keeping the audience on the edge of their seats.

So what did happen when six commuters stepped into that lift? At each level, the door opened to reveal another world. A world of silence where everyone wore masks, and there was no way out. "Can you help me?" "Who are you?" "Where am I?" asked the bewildered passengers, but the only help

they received were giant keys in different colours, given to them one by one.

At last they found keyholes inside the lift, and returned to normal life. This interesting play went full circle, with the same commuters entering the lift next morning.

The drama group have been producing innovative shows for the past 14 years. They meet regularly on Wednesday evenings at the artsdepot, with new sessions starting in September. Community Focus provides many other activities for disabled people of all ages and mixed abilities in Barnet. Workshops are run by experienced tutors, but volunteer helpers are always welcome. For more information, contact Rossana or Caitriona on 020 8369 5483 / 84 or at [admin@communityfocus.co.uk](mailto:admin@communityfocus.co.uk).

## Who do you think you are?

**If you want to find out more about your family history, you may be interested in an illustrated talk by Ian Waller, a professional genealogist and teacher.**

The event is being hosted by The Finchley Society at Avenue House, East End Road, N3, on Thursday 27 September at 8pm. Entry for non-members is £2.

You will discover how to start family history research with family members and how to investigate online and

through record offices. Ian will also suggest the best ways to keep records and construct a family tree.

Annual membership of The Finchley Society costs just £9 a year. For details, contact Robert Winton on 020 8883 2633.

## What's On...

E-mail your listings to: [the-archer@lineone.net](mailto:the-archer@lineone.net)

### Saturday 8 September

- **Guided charity walk of Hampstead Garden Suburb** to raise funds for Combat Stress (Ex-Services Mental Welfare Society). Starts 2 pm at entrance to Golders Hill Park, North End Road, NW11 (near Bull and Bush). Finishes at The Tea House, Northway NW11 with homemade cream tea. Tickets £7. Contact Ruth Smith at [ruthafsmith@hotmail.com](mailto:ruthafsmith@hotmail.com) to book.

### Sunday 9 September

- Public meeting at 11 am at café, **Cherry Tree Wood** (see front page)
- At 3 pm the **mayor unveils plaque for La Deliverance statue**, (junction of North Circular and Regents Park Roads) which commemorates allied victory at Battle of Marne, 1914.
- **From Stage and Screen**: evening of easy listening music featuring organist Christopher Thompson; East Finchley Methodist Church, High Road, 8pm; free admission; collection for Noah's Ark Children's Hospice. Venue fully accessible to people with disabilities.

### Saturday 15 September

- **Dye Young/Stay Pretty**, written and directed by Adrian Berry, and performed by Beth Medley, artsdepot, North Finchley, 8pm.

### Thursday 20 September

- **Finchley Forum**: a chance to air your views to local councillors, council officers and other residents. 6.30pm at the Green Man Centre, Strawberry Vale, N2 (but check venue beforehand). Further information: [democratic.services@barnet.gov.uk](mailto:democratic.services@barnet.gov.uk) or tel 020 8359 2156.

### Friday 21 September

- **Zum**, the original gypsy-tango band, bring their stunning new show to North Finchley's Trinity Church Centre, Nether Street, at 7.30pm; tickets £12 (concs: £10) bookable via [www.zum.org.uk](http://www.zum.org.uk) or from 020 7738 2586.

### Thursday 27 September

- **The Finchley Society** hosts *How to Research your Family History*, a talk by Ian Waller; 8pm at Avenue House, East End Road, N3. Everyone welcome; £2 entry for non-members.

### Sunday 30 September

- **Elaine Delmar sings songs by George Gershwin and Cole Porter** at the Wyllotts Theatre, Potters Bar, in aid of Noah's Ark Children's Hospice in north London, 7.30pm. Tickets £14 and £13 from box office on 01707 645005.

### Wednesday 3 October

- **Visit to the London Metropolitan Archives**, 10.30am, arranged by Shirley Avery for The Finchley Society. Further details from 020 8883 2633.
- **East Finchley Arts Festival**. For full programme details, see page 5.

### Friday 5 October

- **Friends of Barnet Libraries** host an illustrated talk by members of **The Archer** team: a chance to find out more about East Finchley's own newspaper; 11am-12 noon at East Finchley Library. Refreshments provided. Everyone welcome.





## Letters to the editor

### Stanley Field: entire site essential Dear Editor,

With reference to the August issue of *THE ARCHER* and the article "One third of Stanley Field is not enough" I was compelled to put pen to paper.

Barnet Council has the pound signs dangling before its eyes once again and is rubbing its hands in glee with the thought of more rate payments to fill its coffers. The Herbert Wilmot Centre was rapidly demolished. I wonder why? Could it be to give access to Stanley Field to aid its materialising plans?

It doubtless pondered, "How can we sell this plan to the East Finchley populace?" Offer the serfs a third of the land, appears to have been its conclusion.

So it is assumed that will suffice? No it won't. East Finchley residents are constantly getting a raw deal from this Council in a number of areas. Enough is enough. Allow our youngsters the amenities they desperately need, along with facilities which would benefit all members of our community. In order to achieve this, use of the entire site is essential.

**Yours faithfully,**  
**Sheila Mary Ertughrul**  
**Leopold Rd N2**

### Why spurn volunteers? Dear Editor,

Your letter from Pamela Kent in the July issue (*How tree wardens were axed*) was a sad reflection on Barnet's treatment of volunteers. I was for several years involved in Agenda 21 in the South Friern area. A small group of us who were interested in improving our area worked with Barnet Council's officers in removing litter and graffiti in the area, and in clearing and planting a disused flowerbed outside South Friern Library, with plants generously donated by a local DIY store.

We also produced a Newsletter which we distributed to some 2,500 households in the area which urged people to recycle. We did this voluntarily and in our own time because we cared about our neighbourhood. There were eight other Agenda 21 groups in Barnet, all doing similar voluntary work. Barnet Council provided a small sum to keep the groups running and also positively encouraged liaison with their officers.

Out of the blue in 2004, Councillor Brian Coleman announced that all funding would be withdrawn, and Barnet's officers would not be able to work with Agenda 21 volunteers.

This was the same Brian Coleman who then spent council taxpayers' money removing speed humps that had been installed at the specific request of local residents.

If you were running a local council, wouldn't you welcome and encourage the help of volunteers who give their time and effort in improving the environment of the borough? Many councils do but Barnet (motto: Putting the Community First) now treats volunteers with contempt. Perhaps they should remember that volunteers are also council taxpayers and voters.

**Yours faithfully,**  
**David Berguer,**  
**Palace Gates Road, N22.**

### Who holds the key? Dear Editor,

I have never written to you, but I thought I would share an experience I had two weeks ago after reading your article 'After safer neighbourhoods, it's safer transport' (*THE ARCHER*, August 2007). Can we really believe it?

My daughter went for a walk with her dogs in Coldfall Woods and found a bunch of keys lying on the ground next to a bench. She took home the keys and, as she is at work during the week, she asked me to hand them to the police.

I rang the Dedicated Police Team number for East Finchley and got a telephone message, that the office was unattended and I could leave a message, but it would take days, up to a week, before somebody would actually check the telephone messages.

As I had to pass Fortis Green Police Station at 11am next morning, I took the keys with me, only to find a notice that the Police Station was not operational. I then drove to Temple Fortune police station. A poster outside told me that the station was open from 7am to 10pm. However, it was closed at 11.30 am.

I stood around and eventually somebody came out and told me that the station was only open from 7am to 10am.

I went home and rang Barnet Police. I was told that Temple Fortune station was open from 7 am to 10 pm. When I told them that that was not the case, they were astonished. The policewoman was very courteous and said she would send an officer to collect the keys. A patrol car with three officers came next morning.

I tried to do my civic duty by handing in a bunch of keys, but I felt I was being sent from pillar to post. The Neighbourhood Police Team obvi-

**Send your correspondence to: "Letters Page",  
The Archer, PO Box 3699,  
London N2 8JA or e-mail  
the-archer@lineone.net.**

**Letters without verifiable contact addresses will not be reviewed or printed. Contact details can be withheld, however, on request at publication.**

ously needs to listen to messages more often. I left a message on their answer phone but have not heard from them since. Temple Fortune Police Station needs to be open at the times advertised. And is a patrol car of three officers to collect a key the proper use of police resources? I leave the answer to you.

**Yours faithfully,**  
**Dr Dorothea McEwan,**  
**Address supplied.**

### Parking zone deserves praise Dear Editor,

It is easy to moan, isn't it? Much harder and less fashionable to say "Well done" or "Jolly good". Positive events aren't very often news. However Haringey Council is to be congratulated for at last overcoming the doom-mongers and gainsayers with the introduction of a fair, sensible, reasonably priced controlled parking zone for the Muswell Hill shopping area.

At 20p for 20 minutes, it is cheaper than East Finchley (30p for 15 minutes) and it is already noticeable that it is easier to park and shop due to a higher and quicker turn-over of parked vehicles. I think we'll find that once bedded in, local shop trade will increase as folks realise that street parking is more readily available.

Of course the complainers will still carry on but without any sensible or constructive alternative. For them, moaning is enough.

**Yours faithfully,**  
**Robin Dunn.**  
**Springcroft Avenue, N2.**

### Midhurst Butchers

Certified organic meat  
at reasonable prices  
Free-range poultry  
Home-made sausages  
(including Boerwors)

2 Midhurst Parade,  
Fortis Green, London N10  
Tel. 020 8883 5303



### Sports Therapy at UTOPIA

- Muscular aches and pains.
- Injuries.
- Anxiety.
- Depression.
- Bad Circulation
- Repetitive strain injuries
- Muscle spasm, Tension and Stiffness.
- Joint flexibility and range of motion restriction.

For appointments contact:  
**020 8444 4226**  
or  
**07983 629 721**

**Donna Hughes**  
**Utopia, 1 Leicester Mews,**  
**East Finchley, N2 9EJ**

**Any reader who feels strongly about any matter is invited to use this "Soapbox" column.**

**Please note that opinions expressed are those of the writer alone.**



## Who's the twisted fire-starter?

By Jake Eiseman-Renyard

**As mentioned in several issues of *THE ARCHER*, making fires has become epidemic in Cherry Tree Wood, especially after dark. I have sometimes witnessed this in action, and I sadly suspect many of those who do this are under the influence of drink or drugs.**

They seem to think it is acceptable behaviour. Don't they realise how easily fire spreads? They might even be unwittingly aiding developers with an eye on this beauty spot; a forest fire could clear a nice, empty space for them where the woods used to be.

Other examples of anti-social behaviour I have seen include climbing on top of the tube tunnel mouth and pelting a passing train with rocks and an empty cider bottle.

Whoever does take over maintaining the park will have a mountain to climb after all this time of being keeper-less. Luckily, one day in July, I saw two council dustmen emptying bins in the park. Later, in a spot known as Junkies' Corner some burnt logs were still smoking. Although I could quite easily have stamped it out with my foot, I first called one of the council men to show him the fire. "See?" I told him. "This is what's happened to the park since the Council lost interest in looking after it." He told me he would report this to the Council; then we both stamped out the fire.

Now what? The field is still covered in tyre tracks, some flowerbeds are bare, and a corner of the playground has been devoid of equipment for over two years. Come on Barnet, is this really a "Beacon Borough"?

## OBITUARY: Mabel Cairns, 1918-2007



Photograph by Craig Johnson

**Mabel Cairns worked in Market Place for most of her life. Her husband Sid bred prize-winning pigeons for the East Finchley Pigeon Club back in the 1950s.**

Mabel was a woman with strong family values, her arms always open wide for everyone to have a hug. Her door was always open for anyone at anytime, as was her kitchen. Nobody ever went hungry.

A very loving and caring person, she had lots of good friends in East Finchley and in North Finchley, where she lived. She will be missed at the North Finchley British Legion club where she was a bingo 'regular'.

As mother to Ron, Ella, Tommy, Alan, Janet and Mick, Mabel had a large extended family that she loved. She and her beloved Sid loved nothing more than a big family get-together.

Her last family gathering was a wedding, when she dug her heels in and said she was going to walk there and not sit in her wheelchair. True to her word, she did and had a wonderful day.

### Jennie Mann Flowers

- ◆ Hand tied bouquets
- ◆ Scented Candles
- ◆ Gifts
- ◆ Events and Corporate



- ◆ Planted arrangements
- ◆ Homewares
- ◆ Orchids
- ◆ Vases and Containers

Deliveries throughout northwest London and beyond

63a Church Lane, East Finchley, London N2 8DR tel: 020 8365 2284  
email: info@jenniemann.co.uk

**www.jenniemann.com**

### Sallie Rose

M.H.M.A (UK)

Has resumed her practice in East Finchley  
For appointments call 0208 444 7217  
20 years experience



### The East DENTAL

Tel: 020 8

### The East Finchley DENTAL CENTRE

Dr D Freeman BDS (England), MSc London  
Dr A Mohamed BDS (Sweden)  
Dr Patricia Ogden BDS (England) and Associates

**NHS DENTAL CENTRE OF EXCELLENCE**

To register for NHS Dental Care or if you require emergency treatment please call

**Tel: 020 8444 3436**

Web: [www.eastfinchleydentalcentre.co.uk](http://www.eastfinchleydentalcentre.co.uk)

- Friendly, experienced, dedicated Dental Team
- General Dental Care and Service
- Special care for Nervous patients
- Dental Care for Children
- Preventative Dental Care
- Cosmetic Treatment
- Private treatment undertaken
- Teeth Whitening

**144 High Road, East Finchley, N2 9ED**

All are welcome to register and be treated at The East Finchley Dental Centre, in a modern and friendly atmosphere, where all can feel welcome.





Shoes, Trainers, Sandals, Bags and Luggage

Complete Repair Service by a craftsman  
Same day if required

Key Cutting

1 Manor Park Rd. N2, behind 88 Church Lane, opposite Trinity Church  
Tel: 07956 329 150 Open 12-8pm (not Wednesdays)

# THE ARCHER

Published by East Finchley Newspapers, P.O. Box 3699, London N2 8JA. www.the-archer.co.uk



The Under 12 team celebrating winning the Middlesex Shield in March. Picture by Andrew Stone

## Finchley's ready for the World Cup

By Andrew Stone

**On 20 October 2007 the Rugby World Cup final will be played at the Stade de France. Maybe, some time in October 2015 or 2019, your child could run out into such a spectacle.**

Following Jonny Wilkinson's drop goal to secure the World Cup for England in 2003, Finchley Rugby Football Club saw a huge influx of children wanting to try the game and they're looking forward to a similar boost in September.

Over the last four years the mini and youth section of the club has grown dramatically. There are teams from Under 7 to Under 18, and there may well be an Under 6 group this season too.

With that growth there has been success too: last season the Under 12s won the Middlesex Shield and the Colts were runners-up in Middlesex Division 1 and finalists in the County Cup.

Based in Summers' Lane, Finchley is a friendly, open and welcoming club that looks to involve players of all ages and abilities in the fun of playing rugby. Young players start by playing tag rugby and then, carefully and methodically coached, graduate into the full contact game.

It keeps children fit, it focuses on working as a team, rather than showing off individual skills, and of course there's the chance to get really muddy with your friends.

The new season starts in September so if your son or daughter would like to try rugby out, contact Andy Stone on 020 8444 6054.

## A perfect day out

By Lorraine Feldman

**Children and their families enjoyed a wonderful day out at Paradise Wildlife Park, near Broxbourne, thanks to Noah's Ark Children's Hospice.**

As well as all the fantastic animals and attractions on offer at the park, there was further entertainment provided for the families in the Noah's Ark marquee, including face painting, Julian the Juggler, story telling by Marion Hertz, Learn to Drum by AJ Cole, and DJ Steve from Music Box Disco.

"The aim of the day is primarily to give as many of the life-limited children supported by Noah's Ark, their siblings and parents a fun-packed day out together and this year was no exception," said Gill Dodge, chief executive of Noah's Ark.

Noah's Ark Children's Hospice is a small, vibrant charity committed to developing a hospice service to provide practical

support to life-limited children and their families, within the communities of north London and south Hertfordshire. For further information about Noah's Ark call 020 8449 8877 or email sstaples@noahsarkhospice.org.uk.

## Sea cadets on the road

By John Lawrence

**Finchley Sea Cadets have been presented with a new minibus to help them get to their sailing activities.**

The vehicle was presented to the group by Professor Himsworth, of The Worshipful Company of Goldsmiths, at a special presentation evening in July.

During the same evening, the cadets staged displays of their seamanship skills, including a knotting relay, tug of war and a bomb disposal exercise.

Finchley Sea Cadets are a long-established group for young people aged 10 to 18 who meet on Wednesday and Friday evenings from 7.30-9.30pm at the Sea Cadet Hall in Long Lane, near the junction with Squires Lane.

Regular meetings and special display evenings are held throughout the year. The main purpose of the group is to develop leadership skills and teamwork in the young people and to produce good citizens for the future by learning respect and discipline.

The sea cadets sail regularly at Welsh Harp reservoir and also in Docklands in east London.

New members are always welcome. For details, call 020 8346 1828 or visit [www.sea-cadets.org](http://www.sea-cadets.org).



Finchley Sea Cadets with their new minibus. From left to right: Connor Geraghty, Jake Cloney, Chris O'Toole and Brendan O'Gorman, all aged 12. Picture by John Lawrence.

## Relax at the Lazy Sally Kiosk

By Diana Cormack

**The café in Cherry Tree Wood is now open from 10 am - 6 pm every day except Tuesday, when it opens at 1 pm (depending on the weather). Sally-Anne Wigfield, who runs the Lazy Sally Kiosk, told THE ARCHER that if people are still in the park on a lovely sunny evening, it will stay open for longer.**

'Lazy Sally' picnics are available for £5 single or £10 double for people to enjoy at the kiosk. Alternatively, you can bring your own picnic rug, bottles and companions and Sally will prepare the food for you to take away in her convenient Lazy Sally packaging. Meze picnics include vine leaves, hoummos, olives, butter beans in dill and tomato sauce and warm pitta bread. Single portions from the meze selection are available.

There is picnic catering for groups of 10+ as well as for children's birthday parties.

Food is kept chilled in a Piaggio refrigerated van until groups arrive. To book in advance or for a list of picnic menus and prices call 0787 964 2778 or email [sally-anne@think5.co.uk](mailto:sally-anne@think5.co.uk)

In January 2006 Sally, of Beresford Road, was granted the patent on her unique *think5* concept, which colour-codes

and packages the five essential food groups. The café serves *t5rise* breakfasts, *t5revive* midday and *after5 revive* evening meals. In the autumn *t5shine* cooked breakfasts will be available. If you fancy a slice of life in the slow lane, why not take a trip to the park and try the Lazy Sally Kiosk?

### SECUREBASE

DOMESTIC COMMERCIAL INDUSTRIAL SECURITY

Est 1988

CCTV  
Access Control

Intercom Systems

Intruder Alarms

Locks Doors

Safes Grilles

+ EMERGENCY  
LOCKSMITHS

WHY NOT HAVE  
Your Security Problems Solved!  
A FREE ALARM SURVEY



0800 279 0792

112 High Rd • East Finchley • London N2

[www.securebase.co.uk](http://www.securebase.co.uk)STEWART  
DUNCAN

OPTICIANS, SINCE 1962

- EYE EXAMINATIONS
- DESIGNER EYEWEAR
- CONTACT LENSES
- LATE NIGHT
- DYSLEXIA CLINIC
- DVLA APPROVED
- OLD FASHIONED SERVICE

020 8883-2020

126 HIGH ROAD, EAST FINCHLEY

