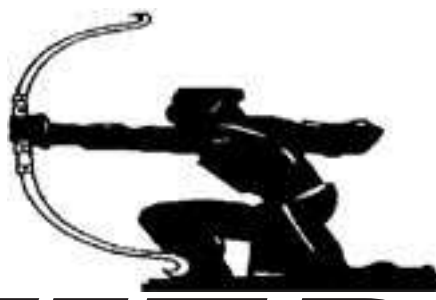


**JEREMY LEAF & CO.**

Professional Sales & Lettings  
AT COMPETITIVE RATES  
020 8444 5222  
eastfinchley@jeremyleaf.co.uk

Local News is our Aim

# THE ARCHER



**GLH**

CAR SERVICE  
020 8883 5000

October 2007 No. 169  
ISSN 1361-3952

20p  
where sold

*A community newspaper for East Finchley run entirely by volunteers.*



Green Artisan organiser Wayne Atkinson gives the thumbs-up for an East Finchley Market. Photo by Daphne Chamberlain

## More in store at the market

By Daphne Chamberlain

**Martin Primary School opened its playground to East Finchley's farmers' market last month.**

The market took most people by surprise, but the Green Artisan company had approached Martin's Head Teacher, Maggie Driscoll, at the beginning of the year. Necessary formalities "took forever", but Maggie told *THE ARCHER*: "I'm very enthusiastic about getting fresh local produce to people, and this is a good way of getting the school involved in the community."

Green Artisan is a new company and a one-man band. Wayne Atkinson is that man, but he had about seven years managerial experience with London Farmers' Markets before branching out on his

own. Knowing East Finchley through friends and from dropping in on Alan's Records, he sees it as an ideal area for a market. "It's literally green," he told us, "diverse, with different cultures, and has a strong link with allotments."

Wayne wants to appeal to all classes, not just to those with disposable incomes. "Some supplies will be more expensive, because of the effort involved in production, but other goods cost the same as in supermarkets or less. There is evidence, too, that farmers' markets encourage local shops."

He was pleased by a positive response to September's market. The main criticism was that there were not enough stalls, but he has promised there will be many more this month.

Stallholders seemed happy

too, telling *THE ARCHER* they would definitely come back. The award-winning Two Fishwives was completely sold out by the middle of the morning.

Ideas in the pipeline include cookery demonstrations and a tea and coffee stall using organic milk, while Maggie Driscoll hopes that by next summer Martin Primary School will have a stall with produce from the children's allotment.

Stallholders would welcome involvement from a few strong-armed people in the community as the market expands, as safety railings make it awkward to get goods into the playground. Contact Wayne to offer help, involvement or constructive comments on [info@green-artisan.org.uk](mailto:info@green-artisan.org.uk) or on 077 579 808 48. Further information at [www.green-artisan.org.uk](http://www.green-artisan.org.uk).

## "Gutted!" Library loses lottery bid

By Daphne Chamberlain

**East Finchley Library has had its application for lottery funding rejected. "Gutted!" was the reaction of the Library Users' Group Chair, Adam Gee. The £857,000 would have been used to upgrade the library building and extend its community activities.**

With £80 million to distribute, The Big Lottery Fund received over 130 local authority library bids, totalling £180 million. Councillor John Marshall, Cabinet Member for Learning Infrastructure, said: "Perhaps Barnet was considered to be too posh to get the dosh. We are deeply disappointed that East Finchley failed to receive the lottery money after the heartfelt encouragement and input from the community." Barnet Council told *THE ARCHER*: "Unfortunately in spite of the considerable support and demonstrated need for the East Finchley project, which was recognised by the Big Lottery assessors in their feedback, it has not been selected because other projects are considered to meet their criteria more closely. It has been made clear to them how disappointed Barnet Council and the East Finchley community are with their decision."

Both the East Finchley Library Users' Group (EFLUG) and Barnet Council say they will fight to retrieve something from the failed bid. They hope that, by working with the local community, more library activities can be provided even without

additional funding.

### Dyslexia scheme may survive

A key factor in the lottery bid was the provision of a dyslexia support centre. Barnet have told us that they still intend to support this scheme, and will be looking at including relevant stock and computer software in their planning for next year. Polly Napper, Secretary of EFLUG, said: "We will try to salvage what we can. Of course, without additional funding there is a limit to what can be achieved."

## Most ticketed streets

**According to figures from Barnet Council, there were 2,095 parking tickets slapped on vehicles in High Road, East Finchley in 2006-07. This puts it in the top 10 of most ticketed streets in Barnet. Top of the list is Golders Green Road, Golders Green, where 4,476 tickets were issued.**

## Hotblack Dixon & Co. Estate Agents

Our success rate in N2 is very high indeed, obviously in Hampstead Garden Suburb but also in East Finchley.

We have often obtained better prices from our base in the Suburb, so

**Please call us for a free valuation or try us if you are on a multiple agency basis**

17 Market Place, Hampstead Garden Suburb  
London NW11 6JY

**020 8458 8411**

**PRICKETT & ELLIS TOMKINS**

36 High Road  
East Finchley N2 9PJ

**020 8883 0033**

**Properties urgently required - now is the time to sell!**

**Estate Agents and Valuers. Established 1767**

**EVERYTHING ELECTRICAL**

Established in the community for 15 years

All domestic and commercial work undertaken by qualified electricians

**NOW AVAILABLE - THE NEW ROBERTS DAB RANGE**

RD-55 SD/Stereo

CRD-51 Alarm Clock

WM-201 Wi-Fi

CRD-33 Dual Clock



Call us FREE on **0800 279 3463** or **020 8444 7994**

[www.everything-electrical.com](http://www.everything-electrical.com)

38 High Road, London N2 9PJ

Cut-price  
Fragrances

**Coral Pharmacy**

Photo D&P  
only £3.99  
for up to 40 exp  
(35mm)

Stockists of a wide range of vitamins, homeopathic remedies, and herbal products.

Open Till 6:30pm (Mon - Fri) 6pm Sat - Parking Available

129 East End Road N2 0SZ Tel 8883 0442

• Visit your community newspaper on-line at [www.the-archer.co.uk](http://www.the-archer.co.uk) •





## THE ARCHER

PO Box 3699  
LONDON N2 8JA

WWW.THE-ARCHER.CO.UK

e-mail: THE-ARCHER  
@LINEONE.NET

**Voicemail & Fax:**

Editorial/enquiries: -  
**08717 33 44 65**

Advertising/finance: -  
**08717 33 45 28**

**PUBLISHED BY**  
*East Finchley*  
*Newspapers*

**CHAIR**  
*Kevin Finn*

**COPY EDITOR**  
*John Lawrence*

**EDITORIAL TEAM**  
*Diana Cormack*  
*Daphne Chamberlain*  
*David Hobbs*

**SUB EDITORS**  
*Ann Bronkhorst*  
*Wendy Devine*  
*Pam Kent*

**PRODUCTION EDITOR**  
*Alison Roberts*

**PICTURE EDITOR**  
*Sarah Clackson*

**ADVERTISING**  
*John Dearing*

**FINANCE**  
*Sue Holliday*

**ADMINISTRATION**  
*Toni Morgan*

**DISTRIBUTION**  
*Sue Holliday*  
*Pam Kent*

**PRINTED BY**  
*Sharman & Co Ltd*

*Thank you to Madden's  
Ale House for providing  
us with a meeting place.*

*THE ARCHER team wishes  
to thank all the generous  
people who give up their  
spare time, in all weather,  
to deliver the paper for us.*

### Your contributions

If you have a story for us, please  
contact us at the above address.  
Comments to THE ARCHER may be  
published unless clearly marked  
'Not for publication' within the text.

### Copy deadlines

November issue: 12 October  
December issue: 16 November

## USEFUL TELEPHONE NUMBERS

### Councils

#### Barnet Council:

Admin/Town Hall 020 8359 2000  
Council Tax 020 8359 2608  
Recycling & refuse 020 8359 4600  
Primary Care Trust 020 8201 4700  
Benefits Agency 020 8258 6500  
Employment Service 020 8258 3900  
Haringey Council 020 8489 0000

### Leisure

Alexandra Palace 020 8365 2121  
East Finchley Library 020 8883 2664  
Muswell Hill Odeon 0870 505 0007  
Phoenix Cinema 020 8444 6789  
Warner Cinema 020 8446 9933

### Transport

BR Enquiries 0845 7484950  
City Airport 020 7646 0088  
London Transport 020 7222 1234  
National Express 08705 808080  
Heathrow Airport 0870 000 0123

### Hospitals

Barnet General 020 8216 4000  
Coppetts Wood 020 8883 9792  
Finchley Memorial 020 8349 7500  
Oak Lane Clinic 020 8346 9343  
Royal Free 020 7794 0500  
St Luke's 020 8219 1800  
Whittington 020 7272 3070

### Health Advice

AIDSline 020 8363 2141  
Alcoholics Anonymous 0845 7697555  
Barnet MENCAP 020 8203 6688  
Cancer Support 020 8202 2211  
Carers' Line 0808 808 7777  
Drinkline 0800 917 8282  
Drugs Helpline 0800 776600  
Health Info Service 0800 665544  
MIND 020 8343 5700

### OAP's Advice

Barnet Age Concern 020 8346 3511  
Contact (N2) 020 8444 1162

Help the Aged 0808 800 6565

### Crime

Emergency 999  
Finchley Police 020 8442 1212  
Mus. Hill Police Stn. 020 8345 2148  
CrimeStoppers 0800 555111  
Victim Support 0845 303 0900  
East Finchley Safer Neighbourhood  
Team 020 7161 9014

### Help & Advice

Childline 0800 1111  
Disability Info Service 020 8446 6935  
E.F. Advice Service 020 8444 6265  
Gingerbread 020 8445 4227  
National Debt Line 0808 808 4000  
NSPCC 0800 800500  
Rape & Sexual Abuse 020 8683 3300  
Relate 020 8447 8101  
RSPCA Inspector 08705 555 999  
Samaritans 08457 909090  
Refuge Crisis Line 0870 599 5443



42 Church Lane, London N2 8DT.  
Tel/Fax: 020 8444 6265

### General Advice.

Monday to Friday: 10am -  
12.30pm and 1.30pm - 4pm.

### Legal Advice.

Tuesdays: 7pm - 8pm.

### Councillors' Surgery.

Saturdays: 10am - 11.30am

### Community Services

❖ Credit Union, Green Man Com-  
munity Centre 020 8883 4916  
❖ Careers advice, Green Man, Com-  
munity Centre 020 8883 4916  
❖ Toy library, Muswell Hill 020  
8444 0244/ 8489 8774

## Don't be distracted

A number of Barnet residents have recently become the victims of a crime known as burglary artifice, or distraction burglary, involving burglars pretending to be workmen.

The burglars are targeting the elderly and are pretending to be plumbers, electricians or are asking for a cup of water. Once the victim is distracted by one of the burglars, the other will quickly take what they can of high value, usually cash and jewellery.

One pair of perpetrators is white, male and approximately 30 years old. They tend to target their victims at the end of the afternoon and in the evening.

All residents are asked to keep an eye out for their neighbours, especially the elderly. If anyone knocks on your door posing to be a workman, they must show appropriate identification, ideally with the company name, a photograph and a company phone number. If you are not sure, do not open the door.

Detective Inspector Julie Bidewell said: "If you see anyone acting suspiciously or knocking on your door, get a good description of them. The police want to know as much about them as possible. We want

to catch them."

Any information should be passed onto Barnet Police on 020 8200 1212 or through your Safer Neighbourhood Team. If someone is knocking on your door and will not go away, call 999.

## Thefts from vehicles alert

There has been a sudden increase in the number of thefts from vehicles in the Beech Drive and Creighton Avenue areas. Over one night recently, five offences took place. These appear to have been opportunist and not the work of an organised gang targeting the area for a specific reason.

The Muswell Hill Safer Neighbourhood Team, whose office is in Fortis Green, is advising motorists to make sure they don't leave anything on show in their vehicles.

## Crackdown on domestic violence

Barnet Police are attempting to bring the crime of domestic violence out from behind closed doors. Police now arrest all perpetrators where evidence of a criminal offence exists. However, it is also necessary to protect the victims, particularly where children are involved.

The Metropolitan Police Service response to domestic violence has changed dramatically in the past 10 years. The first strategy was to encourage victims to come forward and report offences by building trust and confidence that their cases would be taken seriously. This had the effect of increasing reporting from 60,000 incidents in 1998 to more than 110,000 incidents in 2005.

This data enabled the police to measure the potential seriousness of domestic violence with one in eight cases being grievous bodily harm, one in four being actual bodily harm and one in three being common assault. 25% of murders in London result from domestic violence.

DCI Mark Clark said:

"Domestic violence is a serious crime. Barnet Police, with the aid of our dedicated Community Support Unit, will always investigate and seek out those who abuse their partners and arrest them, even if the victim refuses to make a statement or give evidence in court."

## Shop talk

Cootes the chemists have moved to 166-168 High Road. They now occupy the former premises of Cory's chemist shop, which has been completely renovated and transformed.

There is also a new barber's shop where Coral Travel used to be, next to the Phoenix cinema.

## Planning Applications

### Barnet Council

#### 77 Abbots Gardens, N2

Part single, part two-storey side and rear extension. Loft conversion incorporating side and rear roof extensions.

#### 47 Bedford Road, N2

Ground floor rear extension

#### 8 The Bishops Avenue, N2

Single storey side extension. New awning and landscaping elements to other side of property. Alterations to roof including two rear dormers and one side dormer and roof lights to facilitate a loft conversion

#### 68 Brim Hill, N2

Loft conversion with side and rear dormer roof extensions.

#### 99 Brim Hill, N2

Garage conversion and new ground floor link extension from main house.

#### 12 Chamberlain Road, N2

Second floor extension over back addition

#### 81 - 85 East End Road, N2

Construction of first and second

floors over existing warehouse to provide four self-contained flats. Provision of car parking spaces accessed from Brackenbury Road. Flat 1, 195A East End Road, N2

#### Single storey rear extension

#### 59B Fortis Green, N2

Proposed loft conversion with rear dormers

#### 36 High Road, N2

Rebuilding and enlargement of coach house with change of use to residential accommodation. Single storey rear extension to shop, together with new shop front and first floor rear extension.

#### Bus-stop outside 109 High Road, N2

Installation of two internally illuminated panels on bus shelter.

#### Marylebone Cemetery, East End Road, N2

One 6m high flag pole displaying a flag.

#### 24 Summerlee Avenue, N2

Rear dormer window involving roof extension.

## OSTEOPATHY

at

## The Twyford Practice

*Osteopathic consultation and treatments  
in Fortis Green, N2.*

**Robin Kiashek,**  
**Osteopath and Naturopath,**  
**Bsc (Hons), Ost Med.,**  
**N.D., M.R.N.**

**For appointments:**  
**please phone 020 8815 0979**

**or visit:**

**[www.robinkiashek.co.uk](http://www.robinkiashek.co.uk)**

**for further information**





PCSO Steve with WPC Harriet Ball. Photographs courtesy of Sergeant Alex Kay

## Open Day at the cop-shop

By Sergeant Alex Kay, of the East Finchley Safer Neighbourhood Team  
Amidst radiant sunshine on Sunday 16 September, Golders Green Police Station opened its doors to the public for its first Open Day in many years.

Golders Green Police Station is the principal police station serving not only East Finchley, but Childs Hill, Coppetts, Hampstead Garden Suburb, Finchley Church End wards as well as Golders Green itself.

Visitors were greeted by a wide range of displays and activities. There were classic police vehicles through the ages, from a Triumph 2500 and 1980's Land Rover to a Rover 817 series and the latest addition to the fleet, a two-

week-old BMW 530D 3litre Estate. Young visitors were only too eager to climb inside and try out the blue lights and sirens, no doubt to the distress of nearby residents.

An array of firearms recovered from the streets of London by the CO19 Specialist Firearms Unit was on view. Visitors were also invited to meet Foxley and Headley, two beautiful police horses bred in the West Country and now serving at West Hampstead police stables. The

event was organised by the sector Safer Neighbourhood Inspector Stephen Marsh, who commented: "It was wonderful to see such large numbers of our local community attending, giving us the opportunity to explain the role of Safer Neighbourhood Teams in policing and supporting local communities".

More than 1,000 people attended the event, which ended in a fly-past by the Metropolitan Police Helicopter.

## Sackcloth and ashes

Last month's edition of *THE ARCHER* reported on a litter bin that had been destroyed by fire outside the newsagents at 103 High Road, with the suggestion that it could have been caused by a discarded cigarette.

This was not intended as any reflection on Gertie Brownes public house, where customers who have to smoke outside are provided with ashtrays that are regularly emptied. The management also ensures that the surrounding pavement area is kept brushed clean. *THE ARCHER* apologises to anyone who felt offended by this report.

The Keep Britain Tidy Group has reported that the number of cigarette butts dropped on the streets of England has risen by 43% since the smoking ban was brought in. Had it been imposed along with some provision by the authorities for the safe disposal of cigarettes, this national problem might have been reduced.

## The truth about Dick

What is the truth about Dick Whittington and his cat? He really was the lord mayor of London around 1400 but was he a poor apprentice made good and did his cat make his fortune?

Brenda Cole makes a welcome return to the Finchley Society to tell all in an illustrated talk 'Turn again, Whittington' at Avenue House, East End Road, at 8pm on Thursday 25 October. Entry for non-members is £2.

## Campaign to banish plastic bags

By John Lawrence

An ambitious campaign is under way to turn East Finchley into a plastic bag free zone. Traders are being asked to stop issuing plastic bags that aren't biodegradable and shoppers are being invited to rally behind the idea.

If successful, East Finchley would follow in the footsteps of the small town of Modbury in Devon, which earlier this year made national headlines by banning plastic bags.

The campaign has been started here by local mother Sally Swann and enthusiastically backed by the Regeneration and Enhancement in East Finchley (REEF) group, the people behind the 'I ♥ N2' slogan.

### Can we take a lead?

Becoming the first community in London to go plastic bag free could generate enormous publicity for East Finchley and tie in perfectly with REEF's aim to put East Finchley on the map.

Sally Swann said she was inspired by Rebecca Hosking, the wildlife camerawoman who filmed turtles off Hawaii being suffocated to death slowly by plastic bags and who then led the successful campaign in her home village of Modbury.

Sally said: "After becoming a mother I became more aware of environmental issues. I think East Finchley, a London community with a unique village

sense of ownership, could take this task in its stride and pave the way for neighbouring high streets to follow."

### Shift in behaviour

REEF is asking traders in N2 to issue only cornstarch bags, which are biodegradable, and to sell re-useable fair-trade cotton bags. Its letter to shop owners acknowledges that it is asking for a major shift in behaviour from everyone.

It states: "We are under no illusion that making this change will be easy, but if we can prevent waste, harm to wildlife and climate change, and generally make a better environment for our children and their children, it will be worth the effort."

Publicity is the first step in the campaign and then the level of support from East Finchley traders and shoppers will become clear.

For more details, you can contact Sally directly via [info@east-finchley.com](mailto:info@east-finchley.com).

Are you ready to give up plastic bags? Tell us what you think of Sally's campaign. Write to *THE ARCHER*, PO Box 3699, London N2 8JA or email [the-archer@lineone.net](mailto:the-archer@lineone.net).

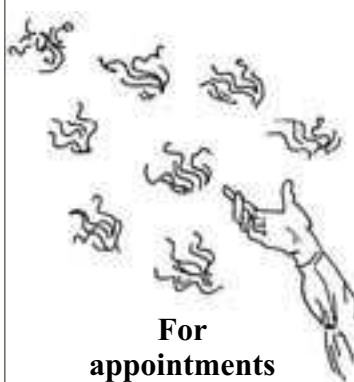
**P.A.music**  
Lighting • Sound • FX • Video

**We Have Moved**

to: Unit 4  
The Old Printworks  
25 Tapster Street  
Barnet, EN5 5TH  
Email: [p.a.music@fsbdial.co.uk](mailto:p.a.music@fsbdial.co.uk)  
Hire & Sales  
020 8440 8008

## HEALING

**Kathryn Scorza**  
Registered Spiritual Healer



For appointments in East Finchley please call  
**07703 404 839**  
or email  
[kathryn@spqrlondon.co.uk](mailto:kathryn@spqrlondon.co.uk)

**M J GRIFFITHS (Builders) Ltd**  
New Build  
Extension  
Refurbishment  
Property Maintenance  
TEL / FAX 020 8445 1579

**Nicky Sharp**  
BSc (Hons) Ost Med  
**Osteopathy Clinic**  
for appointments:  
**Tel: 020 8815 9433**  
At Nova Dental Care  
260, East End Road, London N2 8AU

**EAST FINCHLEY ELECTRICAL**  
ALWAYS LOWERING PRICES  
Energy saving kits now available  
Control appliances at the touch of a button  
SAVE £38 per year by taking appliances out of standby  
NOW IN STOCK

**EIC** LOCAL COUNCIL  
APPROVED CONTRACTOR & RETAILER  
For all your electrical needs in the home, we turn up on time, guarantee our work and are unbeatable value.  
115 High Road London N2  
Tel: 020 8444 5630 or email [sales@ef-elec.co.uk](mailto:sales@ef-elec.co.uk)

KITCHENER ROAD  
HIGH ROAD  
HUNTINGDON ROAD  
[We are here.]

**VICTORY AUTO SERVICES**  
Air-Conditioning - Recharge & Servicing  
Mechanical repairs, tyres, bodywork, clutches, exhausts  
MOTs by appointment  
109 Fortis Green East Finchley London N2 9HR  
Tel: 020 8883 9707 / 0023 Fax: 020 8482 9179





A good turn-out for the Friends meeting in Cherry Tree Wood.  
Photograph by Diana Cromack

## Cherry Tree Wood crisis continues

By Ian Cormack

**There was a good attendance at the public meeting called by the Friends of Cherry Tree Wood on Sunday 9 September to debate the state of the wood.**

It was held at the Lazy Sally Kiosk, with coffee and seating provided. Those present included two representatives from East Finchley's Safer Neighbourhood Team on their day off and our three local Councillors, who indicated their support by tabling a comment to the Council after a meeting at the Town Hall the following Tuesday.

One of the main stumbling blocks to Cherry Tree Wood getting Green Flag status, with the extra funding it carries, is the pavilion. The cost of removing, let alone improving the building, is prohibitive.

The present peripatetic staff who have replaced permanent park keeper Chris Ward do not carry out any constructive conservation work. They are just trying to hold the wood at its current level and generally struggling in the attempt.

Many ideas were discussed, including deluging the Council with letters and emails; widening publicity to include the Barnet press as well as *THE ARCHER*; seeking independent advice about what the wood needs to preserve it; inviting local people to state their priorities; and setting up a blog site. Chris Ward used to provide advice and attend meetings but, unfortunately, this happy state is no more.

There was also a kind offer to form a sub-committee and seek funding, but this

would only be possible for capital projects, not ongoing maintenance which councils are expected to provide. The AGM was held afterwards but only a few people remained to hear the Friends' ongoing arrangements. Anyone interested in supporting the Friends' application for funding to undertake a conservation project, or simply wanting to pass on their thoughts about the Wood, should contact [info@cherrytreewood.co.uk](mailto:info@cherrytreewood.co.uk)

## 102 bus service improvement

**Bus campaigners have won their long battle to get a night service for the 102 route that links Golders Green, Hampstead Garden Suburb, East Finchley and Muswell Hill. Since 1 September, 102 buses have run a 24 hour service at half-hourly intervals.**

Haringey LibDem Councillor Gail Engert said she was delighted at Transport for London's response to local concerns and pointed out that people involved in "the vibrant night-time economy of Muswell Hill" will be able to get home safely.

## Finchley Forum

By Daphne Chamberlain

**The Finchley and Golders Green Forum met at the Green Man Community Centre last month.**

• **NHS redevelopment:** Two spokespeople outlined NHS proposals, including the development of Finchley Memorial Hospital, extended opening hours for GP practices, more drop-in centres, and a children's centre in Oak Lane, N2. The consultation period for deciding where planned in-patient surgery takes place - at Barnet or at Chase Farm - ends on 19 October. Cllr John Marshall said that relocating this surgery to Chase Farm would not be acceptable to Barnet.

• **Dropped kerbs:** A member of the public complained about the lack of dropped kerbs throughout the borough, and several people asked for more liaison between developers and Council departments, to ensure better disabled access from roads to new buildings.

A Highways Department officer reminded people that his department always responded to individual requests for dropped kerbs.

• **Recycling of plastic containers:** From next year, recycling of both plastic and cardboard will be introduced throughout the borough.

• **Next forum:** Monday 12 November. Venue not yet disclosed.

## New parking zone in Haringey streets

By John Dearing

**A new controlled parking zone (CPZ) was due to come into effect in Fortis Green and further afield at the end of September.**

The zone includes Twyford Avenue (from the junction with Fortis Green to the boundary of 38/40 Twyford Avenue), Shakespeare Gardens, Western Road, Springcroft Avenue, Southern Road (from the borough boundary to the road end), Bancroft Avenue (from the borough boundary to junction with Aylmer Road) and Fortis Green (from the borough boundary to the junction with Eastern Road).

For some years now residents in these roads have seen parking spaces taken by commuters displaced by Barnet Council's East Finchley CPZ, who park all day and use the Northern Line.

Various schemes encompassing the Fortis Green area

and parts of Muswell Hill had been proposed by Haringey Council, but all had been turned down, mainly due to objections from Muswell Hill residents and businesses. A more local scheme was proposed in 2006 and, having been revised following several consultations with local residents, the CPZ was finally announced in March.

The new CPZ will operate between 11am and 1pm on weekdays, when the parking bays will be for residents only.

Residents' permits will cost £25 and business permits £225 a year. Visitors' permits will be available. There will be no pay and display bays, apparently.

Further details may be found on the Haringey Council web site [www.haringey.gov.uk](http://www.haringey.gov.uk).

## Mayor to support hospice

**Barnet Mayor Councillor Maureen Braun has chosen the North London Hospice as the charity she wishes to support during her year of office. Throughout the year Councillor Braun and her fundraising committee will be organising many events to raise money for the hospice's Building and Refurbishment Appeal.**

Asked why she had chosen the hospice, Cllr Braun said: "I wanted a charity that was for the benefit of Barnet residents, that could be identified as needing the money, and one which impinges on the lives of very many people. Everybody is a potential user."

The building appeal aims to raise £700,000 to refit the hospice's facilities and make them more suitable for the needs of patients and their families.

Hospice fundraising director Pauline Treen said: "We need all the help we can get from the local community. This appeal is over and above our annual running costs of £5 million with only 24% of this being met by the NHS."

You can make your donation to the Barnet Mayor's Appeal,

North London Hospice, 47 Woodside Avenue, London N12 8TF.

## Your Forum, your say

By Daphne Chamberlain  
**Residents' Forums offer everyone the opportunity to bring any matter of concern to Barnet Councillors and paid officers. It is the chance for all of us to say what we think, ask for issues to be investigated, and perhaps generate support from other members of the public.**

Forum meetings used to cover roughly half of each Parliamentary constituency (e.g. Finchley) but have been enlarged to cover the whole constituency (in our case, Finchley and Golders Green). Barnet says this is in order to be in line with Area Planning and Area Environmental meetings.

Forum meetings take place about every six weeks, moving locations around each constituency. Inevitably, however, some venues are now more difficult to reach without private transport. At the September Forum several people knew nothing about some areas being discussed and one woman asked for maps to be issued.

### Poor turn-out

One question touched on insufficient publicity for Forums and the fact that future venues are no longer given out at the meetings. This may be one reason for poor attendance at the September meeting, where nine officials were only just outnumbered by 13 members of the public, joined by two latecomers at the end.

In the past *THE ARCHER* has reported on many lively discussions, often about topics very relevant to East Finchley, but the emphasis at this East Finchley-based Forum was not on our district. As the public sets the agenda, that responsibility is down to us.

Wherever possible, *THE ARCHER* will publish the date and venue for each Finchley and Golders Green Forum in What's On. Details are available on the Council website, [www.barnet.gov.uk/democratic-services](http://www.barnet.gov.uk/democratic-services) (Council meetings), but only a short time in advance. If the forum you want is not shown, call 020 8359 2156.

We either use this piece of democracy or we lose it.

A friendly welcome awaits you

### EAST FINCHLEY METHODIST CHURCH

197 High Road, London N2 (opp. Creighton Ave.)

[www.eastfinchleymethodist.org.uk](http://www.eastfinchleymethodist.org.uk)

**Family service and Junior Church  
Every Sunday at 10.30 a.m.**

Worship Music Social events Wheelchair friendly  
tel: 020 8349 9340 e-mail: [info@eastfinchleymethodist.org.uk](mailto:info@eastfinchleymethodist.org.uk)

### All Saints' Church, Durham Road, East Finchley Church of England

**Sunday masses at 8.00 a.m. and 10.00 a.m.  
Weekday masses at 10.00 a.m.  
Prayer requests are gladly accepted.**

**The Parish has a flourishing social life.  
Contact the Vicar, Fr Christopher Hardy,  
on 020 8883 9315.**

**All Saints' also has a strong musical tradition and an  
enthusiastic choir of both adults and children.  
Experienced singers are always welcome.  
Contact Geoffrey Hanson on 020 8444 9214.**

<http://www.allsaints-eastfinchley.org.uk>





## Feeding a stray is never enough

By Sheila Armstrong

**Eighteen neglected cats were rescued from two sites in East Finchley recently by the local charity Animal Aid and Advice. The charity's Marilyn Dyson, an experienced trapper, is critical of some people's attitude to cats and ignorance of their needs.**

She says she comes across stray cats, which have been left to breed indiscriminately, abandoned when people moved house, or left ill and even dying. Marilyn told *THE ARCHER* that most strays have something wrong with them, which is why they will come to other humans for help.

Her advice is that it is better to contact Animal Aid and Advice on 020 7607 1723 rather than feed a stray. In that way, the cat can be found a new home or at least neutered and returned to site if it is feral. If left to breed, one cat in the course of a year can produce many kittens, which in turn produce more offspring.

### Neglect and cruelty

Called to a house recently to collect five kittens for rehoming, Marilyn found the kittens underweight and badly infested with fleas. The mother of the

kittens was already pregnant again, and there was another cat which was nearly bald, very thin and crawling with fleas.

In another case, someone had been feeding a cat for three years as the owner had moved away without him. A friend drafted in to feed this cat at holiday time noticed that he could not eat because of severe mouth ulcers and was so thin he could hardly walk. Unfortunately, this cat had to be put to sleep but in most cases the charity is able to give veterinary treatment and rehome them.

Marilyn is appealing for a volunteer with a car to help Animal Aid and Advice deliver and collect cats as well as items for the charity's High Road shop and its two other local outlets. Please get in touch at the number above if you can help.

## Barnet's recycled cans help trees grow in Africa



Tree planting and farming projects in Malawi are being actively supported by every can recycled in Barnet. Photograph from the Malawi project

**Barnet Council is part of a campaign that will see one tree grown on the shores of Lake Malawi in southern Africa for every tonne of aluminium cans and foil recycled.**

Last year Barnet residents recycled 622 tonnes of cans, equivalent in weight to roughly 75 double-decker buses. Cans and tins collected are sent for reprocessing within the UK.

Recycling aluminium uses just 5% of the energy and emissions required to make it from the raw material, bauxite. Cllr Matthew Offord, Barnet Council's Cabinet Member for Environment and Transport, said: "This campaign is yet another excellent reason for recycling. Every time Barnet residents put out their Black Box they are also contributing to tackling deforestation and encouraging the economy in Africa."

They back these arguments by pointing out that the 263 serves hospitals at each end of its route and that, after East Finchley, the Northern Line is no longer parallel with the road, so the tube is not a practical alternative for many people. The northern end of East Finchley is further away from an underground station than much of Muswell Hill, which certainly has more than one bus.

Development Scheme, who will consider it.

The same letter claimed that new technology, to be introduced to the 263 in 2008, will stop bunching.

Bus Watch believes that the increase in population and brown site development, congestion on existing buses and the element of choice contribute to a powerful case for another service.

## Bus Watch pressing ahead

By Daphne Chamberlain

**As reported in our August edition, East Finchley Bus Watch is pressing ahead with the case for an improved service along the High Road. Secretary Hazel Burnett has contacted Transport for London (TfL), London Buses, London Travel Watch, Barnet Highways Dept, Council Leader Mike Freer, East Finchley local councillors, Greater London Assembly representative Brian Coleman and Rudi Vis MP.**

*THE ARCHER* hopes to bring you their responses next month.

Meanwhile, on 30 August, an individual member of Bus Watch received a letter from TfL, telling him that his request for a second bus route between East and North Finchley had been passed to the Network

### WANTED

**Old Lambretta & Vespa scooters, spares etc. Any condition. Will collect**

**Call Mark on 07957 597 329**

**Lazooli**

Vintage, Retro and New Fashion

46 High Road  
East Finchley  
London • N2 9PJ  
020 8885 1117

### COMPLEMENTARY THERAPIES

Utopia Health & Beauty Clinic

At Utopia we offer an extensive range of complementary therapies and holistic treatments that can help with many common ailments, such as...

- Back pain
- Sciatica
- Anxiety & Depression
- Migraines & Congestion
- Injuries
- Digestive Disorders
- Hormonal Imbalances
- Allergies/Asthma/Hayfever
- Sleep disorders
- Pregnancy & Fertility

1A LEICESTER MEWS  
EAST FINCHLEY  
LONDON, N2 9EJ

**Tel 0208 444 4226**

the  
cherry  
tree

Elegant and inspired gifts for all occasions

172, High Road, East Finchley N2 9AS Tel: 020 8883 4369

info@thecherrytreeuk.co.uk www.thecherrytreeuk.co.uk

**NOW OPEN ON SUNDAYS  
FROM 10.30 TILL 1PM**

Cards & Wrapping Paper

VIP Bags

Designers Guild

Lip Lingerie

Hope & Greenwood  
Organic Chocolates

LSA Glassware

True Grace Candles

Susan Suell Jewellery

**Josephines**

EXPERTS IN CREATIVE FLORAL DESIGN

**Freshest Flowers - Stylish Designs - Great Prices - Same Day Delivery\***  
**No excuses for missing that special occasion!**

\*orders for same day national deliveries must be made before 1pm

www.josephinesflowers.co.uk

Tel: 020 8444 9569/020 8883 3598

60 High Rd, East Finchley, London N2 9PN





Fred Pentland Firth, WWII veteran in front of the statue. Photograph by Sheila Armstrong

## Naked Lady back in the spotlight

By Sheila Armstrong

**The great and the good of the Borough gathered together on 9 September for a short ceremony to unveil an information plaque next to the well known 'Naked Lady' statue just off the North Circular. The statue was first erected to celebrate the Allied victory in the first Battle of the Marne in 1914 and also to commemorate the second Battle in 1918.**

Eight thousand people attended the original ceremony in 1927, when the statue was unveiled by the then Prime Minister Lloyd George. Not quite as many were there on a hot Sunday in September but it was a good turnout including the Deputy Lord Lieutenant of Barnet Martin Russell, the Mayor Maureen Braun, council leader Mike Freer, members of the Finchley Society, who were instrumental in the research for the project, representatives of the army and air force cadets

and other interested parties.

The statue by French sculptor Emile Guillaume was bought by Lord Rothermere, owner of the Daily Mail, when he saw it exhibited in the Paris Salon in 1920. He donated it to the then Borough of Finchley in 1927.

Robert Winton, chair of the Finchley Society, told *THE ARCHER* that they had plans to install plaques with information about other local landmarks. The plaques will be paid for from the Peggy Wells Bequest.

## Prost! Sausage and song at our own Oktoberfest

**Prepare for a lively festival of food, drink and music this month when East Finchley grabs its very own slice of Germany by hosting its first Oktoberfest.**

The event takes place over the weekend of 19-21 October at the Constitutional Club on The Walks.

Organiser Martin O'Donnell is promising a range of more than 20 British and German real ales and beers, as well as Schnapps, fine wines, a German sausage barbecue and live music each evening.

Visitors to the Oktoberfest in Munich consume one million sausages, half a million chick-

ens and 1,000 roast knuckles of pork, washed down with six million litres of beer. "Our festival will be on a somewhat smaller scale but will be just as much fun," says Martin.

Another feature of the weekend will be a "stammtisch", literally voice table. A regular feature of southern German pubs, this is usually the largest table in the bar and you sit at it if you want to talk to people but are on your own. Everyone is welcome and the discussion

can go in any direction.

The Oktoberfest is part of the I ♥ N2 campaign, aimed at encouraging people to live, shop and relax in East Finchley.

A temporary monthly membership of the Constitutional Club can be purchased on the festival weekend for just £5. For up to date information on club events, visit [efclub.btik.com](http://efclub.btik.com) or email [martin@eastfinchley.co.uk](mailto:martin@eastfinchley.co.uk) if you would like to have a look around the club.

## 100 years young

By Daphne Chamberlain

**Friends and neighbours celebrated with Church Lane's senior resident in August. Jean Henry reached her 100<sup>th</sup> birthday in great style. As she cut the cake, made by one of her neighbours, she reminded us that it was actually her third one. The whole month had been a party, with relations coming over from New Zealand.**

"It was an extended birthday," she said, "but it's all gone very smoothly. Now I can just sit back and thank everyone."

Sitting back is not a way of life to associate with Miss Henry, who has travelled several times to New Zealand herself, most recently four years ago.

Alert and energetic, she has the smiling eyes of Ireland, where she grew up. Her parents had moved there from Edinburgh, and she worked in Dublin for some time. Ironically, when she came to East Finchley in 1937, it was only going to be for a few months. Now, 70 years later, she has received a card and congratulations from the Irish President as well as from the Queen.

There was no speech to go with the cake. "I'm no good at public delivery," she told us, "but I can tell a good story in private."

A very happy 101<sup>st</sup> year, Miss Henry!



Jean Henry cuts her 100th birthday cake. Photo by Daphne Chamberlain

## Secure your home against burglary

**Barnet Borough Watch have advice for all of us on home security. "Look at your house as though you were a burglar. If you lose your door key and you can think of a way in, then so can a burglar. They choose the building that provides the easiest opportunity, such as an open downstairs window or a spare key under the outside mat. Burglars don't want to get caught; they want to steal your property."**

Outside doors are safest when fitted with a five-lever mortice deadlock. You can buy these in most DIY shops; check there's a British Standard kite mark and the words five-lever on the facing plate. If your external door is less than 44mm thick, get a high security rim deadlock.

Door hinges should be sturdy and secured with good long screws; consider reinforcing the hinge side of the door with hinge bolts. When replacing your whole door, consider a fibreglass door with a sturdy frame.

Glass should be toughened and laminated. Beading should be glued and fixed with security screws. On modern double glazed units ensure the beading is not on the outside. Fit a restrictor to the inside of your letterbox to stop anyone reaching through to release locks and bolts, and a peephole, or viewer, to see who's knocking before opening the door. All doors locked from the inside should be fitted with mortice security bolts, one third from the top and bottom of the door. Fit additional security locks at the top and bottom of patio

doors to stop the frame being lifted off the tracks, and ensure that the sliding section is on the inside. A multi-lock system is recommended, with mortice security bolts with removable keys at the top and bottom of both doors. Check the frame is well fixed and replace weak or rotten woodwork. Don't leave a spare key hanging inside the letterbox, under plant pots or doormats or anywhere else around your home. Thieves know all the hiding places. For more information about crime prevention go to [www.met.police.uk/barnet](http://www.met.police.uk/barnet).

## Truly international

By Manorside headteacher Steve Hilborne

**Manorside Primary School has been awarded the coveted International School Award. Only the second school in Barnet to win this award, it represents the culmination of several years of international activities at Manorside. The full award, presented by the British Council, is given to those schools which demonstrate that such activities are an integral part of the everyday curriculum.**

Manorside, in Squires Lane, N3, has forged links with schools and children in Thailand, Canada, South Africa, Morocco and the Gambia over recent years. This two-way exchange has benefited the children by enriching their experience and widening their understanding of other cultures. It's simply made the world a much smaller place.

Manorside held its first International Week this year, which was brilliantly supported by parents and the wider community. The children were involved in music, art and dance from all around the globe. They enjoyed foods from every continent and

made the world come alive in their classrooms.

French is taught across all junior classes, a headteacher from Thailand has paid a visit, and members of staff have travelled to Asia, Africa and North America to study education and culture.

Putting Internationalism at the centre of school life at Manorside has been proved to raise standards, achievement and motivation. It's been a great way to get the whole school and the community working together. We've also made some great friends and some lasting relationships along the way.





## The rub in rubbish

By Sheila Armstrong

**It's great to have a clear-out and get rid of those unwanted gifts, old clothes and things from IKEA you bought but can't remember why, except it seemed like such a bargain at the time. So you put it all in a black rubbish sack and dump it at the nearest charity shop.**

No matter if the shop is closed, you leave it on the step. Local free loaders may well go through it but that's not your problem because at least you've got it out of your house. Virtue rewarded, you go home confident that in feng shui terms the chi will be able to flow more freely round your living room.

### Blue bags

But did you know that all your stuff has to be carefully sorted by shop volunteers, the saleable items priced and the real rubbish thrown away or recycled? And there's the rub.

It costs charity shops £1.50 per bag for the special blue bags that Barnet asks traders to use for rubbish. One shop told *THE ARCHER* that two bags a day are needed on average so over a week that is £21, and over a year a sizeable amount of cash.

Most donations are gratefully received but not all. Some of what ends up on the doorstep of the charity shop could and probably should have been thrown out or recycled: the clothes that aren't actually clean, the broken pots and burnt pans. Think before you offload, please.

## Oakhill Park golf course re-opened

**Oakhill Park 9-hole golf course in East Barnet was officially re-opened to the public on Saturday 4 August by the Mayor of Barnet, Councillor Maureen Braun; her son, Michael Braun, hit the first shot.**

Members of the public were invited to come to the opening ceremony and then, during the afternoon, to try out the course free of charge.

Ian and Paul Scagnelli have signed a 20-year lease to run the course within the council's park. This is part of a new scheme by Barnet Council for leasing the day-to-day running of amenities such as golf courses to private

organisations whose expertise will help to develop them into top-grade facilities.

The course will be open Monday to Sunday. A round of golf costs £3.70, and £2.20 for senior citizens (Monday to Friday). Golf clubs of all sizes can be hired at £1.80 with a refundable deposit of £5.00. Golf balls are sold separately. To book a round, call 020 8368 8460.

Oakhill Park is a large informal landscaped park, with an open aspect and outstanding views. It is the venue for the East Barnet Festival. As well as the golf course there is a bowls green, café, pavilion with changing rooms, toilets, football pitches, multi-sports court, two play areas, a site-based park keeper and three tennis courts. The Green Flag Award scheme is the national standard for parks; Oakhill is one of six Barnet parks that have been awarded Green Flag status.

## Eyes up

By Ann Bronkhorst

**What's bright green and screeches in the treetops? Answer: a ring-necked parakeet, once an exotic rarity in this country and now seen (and heard) quite widely in south east England. Noisy groups of parakeets have moved into St Pancras Cemetery and Coldfall Wood, but it's hard to see them in the thick leafy canopy. As the leaves turn colour that flash of green feathers may show up more clearly.**

According to the RSPB, parakeets compete with our native woodpeckers so there's a potential problem. Should they be discouraged, even culled, or encouraged as delightful new residents? Maybe readers of *THE ARCHER* have views about this.

While you're looking up into the trees in Coldfall Wood you may notice the new bat boxes being fixed in position this autumn, thanks to funding obtained by the Friends of Coldfall Wood. And if you visited the Friends' stall at the Muswell Hill Festival on 16 September you'll have heard about their other activities and plans, which *THE ARCHER* will cover.

## It's a jungle out there!

By Lucy Chamberlin

**Earlier this year I spent two months doing my bit to conserve the planet, living a spartan existence in the rainforest of Belize.**



Lucy Chamberlin in Central America

Trained and led by Trekforce, a company dedicated to conservation in Belize and Borneo, whose previous participants have included Ben Fogle and Jack Osbourne, our project group of 25 young people worked on a site by Davis Falls, the second largest waterfall in the country.

### Tough conditions

Eight miles from the nearest road, we slept in hammocks strung from trees, collected water and washed in the river, and picked our only fresh food from the orange orchards below. Even boiling a kettle involved first making a fire, and our machetes soon became our best friends. By the end we had cleared trails, built bridges and handrails, and thatched two new 'palapas', a type of indigenous shelter, with 20ft cahoun leaves.

The idea behind all this

industry was to give locals an alternative to illegal logging by encouraging eco-tourism in the area. Explorations made into a little-known section of jungle documented geology, flora and fauna; this, together with the discovery of a new waterfall, will give evidential backing to those lobbying to make the location a national park.

### Travelling through Central America

The following two months I spent travelling in Mexico, Guatemala and Honduras, and diving on the reef off a couple of Caribbean islands. We climbed a live volcano, bathed in hot springs, and took countless hairy bus journeys on half-built mountain roads.

Central America contains a relatively high proportion

of the world's biodiversity in a surprisingly small land-mass - and I don't mean just plants and animals. The people we came across were as varied and interesting as the landscape: Mayans living side by side with Afro-Caribbeans and descendants of Spanish settlers.

Guatemala was a particularly fascinating and beautiful country, one that seemed in many ways to have it all. From the colonial culture of Antigua to the living tradition of rural villages; from the highland lakes of the north to the dry barren plains in the south east: the contrasts were compelling. All this against a backdrop of mystical Mayan history glimpsed unexpectedly but definitively, like the ancient temples through the leaves of the jungle.



**brera gardens**

- garden design
- maintenance
- hard landscaping
- interior plants & containers
- soft landscaping
- East Finchley based

Mob. 07939 557 934

Tel. 020 8365 3615



**CASA PEPE**  
Café & Licenced Restaurant

**Evening Menu**

**Now Open Evenings**

89, High Rd. East Finchley  
020 8444 9262

**Klages Plumbing & Heating Agency LTD.**

CONTACT TELEPHONE No: 020 8346 7218 / 8636

**KLAGE**

**A NAME IN PLUMBING FOR OVER 40 YEARS**



**Eastfinchleyclinic**

Wendy Longworth & Associates physiotherapy practice offers a variety of treatments at the clinic, or off-site, in patients homes, nursing homes, private hospitals and other organisations.

- Back Pain
- Neck Pain
- Whiplash Injury
- Sciatica
- Sports Injury
- Frozen Shoulder
- Arthritis
- Tennis Elbow
- Sprain or Strain
- Rehabilitation
- Neurological
- Stroke

**www.eastfinchleyclinic.co.uk**

East Finchley Clinic  
2-3 Bedford Mews  
Bedford Road  
London N2 9DF

**020 8883 5888**  
FAX: 020 8444 8874





# YOUNG ARCHER

## Celebrating the Harvest

By Diana Cormack

**For centuries people all over the world have celebrated that special time of year when the crops are gathered in.**

Because they depended on a good harvest to keep them alive throughout the winter months, it was also a time of festivals when they thanked their god or gods for providing the food they needed. For those who worked on the land it was a particularly busy time bringing in the cereals, fruit and vegetables so when it was over, naturally they were ready to party. Today's harvest celebrations are a reminder of their ancient customs.

Remember you should try to eat five servings of fruit and vegetables every day.



Sunflowers at Martin School. Photograph by Diana Cormack

## Home-grown harvesting

By Diana Cormack

**Despite the inclement weather over the summer holidays, the allotments at Martin Primary School managed to provide a plentiful harvest.**

Over the year the children have grown flowers such as geraniums, sweet peas, sunflowers, asters and Busy Lizzies and have cultivated their own strawberries. The main produce has been vegetables, with sweet corn, carrots, runner and broad beans, potatoes, spinach, beetroot, lettuce, tomatoes, cabbages, radishes, marrows, pumpkins, courgettes, cucumbers, leeks and green onions being carefully nurtured.

Not only have the pupils learned how to grow plants, they have also been able to harvest them and subsequently to prepare them for eating. What a wonderful way to feed young minds and to encourage children to eat healthily.

### Jokes for harvest time

- What did the lettuce say to the celery?  
*Stop stalking me!*
- Why did the onion go out with the prune?  
*Because he couldn't find a date.*
- What is the fastest vegetable?  
*A runner bean.*
- Why mustn't you tell secrets in a cornfield?  
*Because there are too many ears.*

## Prizewinning posters tackle litter scourge

**Students at Fortismere School have won prizes for anti-litter posters and their winning entries are on show in shop windows all along Muswell Hill Broadway.**

The competition was designed by the Fortis Green Safer Neighbourhood team,

Fortismere School, Haringey Council and the Muswell Hill and Fortis Green Association to encourage students to recognise the problems litter can cause.

More than 80 students took part and the winners received cash prizes at the Muswell Hill Festival in Cherry Tree Wood on Sunday 16 September.

## East Finchley Baptist Church

Just off the High Road in Creighton Avenue N2

**Sundays at 11.00 am and 6.30 pm**

For more information  
please contact the Church Office  
Tel: 8883 1544 (Minister: Simon Dyke)

**Visitors always welcome**



Visitors peruse the arts and crafts on offer at last year's EFO Art Fair. Photograph by John Lawrence

## Welcome to the Fair

By Janet Halton

**On Sunday 18 November East Finchley Open will be holding its annual Art Fair from 10.30am-4pm at Martin Primary School, Plane Tree Walk.**

The EFO group of locally based artists and craftspeople has been going for four years now and the Fair is organised by Christine Watson and Monica Peiser. This year, like every other, applications for stalls by EFO members and others have already been brisk. Christine is expecting a wide variety of original and affordable work to be available.

### Assembly with a difference

One of the enjoyable things about the Fair is that it takes place in Martin Primary School with the strong support of the Headteacher, Maggie Driscoll. The school offers its excellent halls, which are a source of

interest to those who haven't seen them before, or perhaps not for a while. The warm welcome, in sometimes doubtful weather, is enhanced by the possibility of refreshments, somewhere to sit down and chat and, for children, a face painter.

There's free admission but a voluntary donation of £1 per adult is suggested, all of which goes to Contact, the registered local charity. Contact aims to improve the quality of life for elderly, disabled and isolated members of the N2 community. In the last two years visitors have contributed more than £1,300 through their £1 donations.

### Art and craft for all

Finally to what will be on

sale at the 35 (or more) stalls. There are ceramicists, jewellers, photographers, textile artists, including stitchers and felt-makers, as well as painters on silk. There's also a milliner and a costume designer with clothes to try.

Handmade work of all kinds includes traditional and contemporary basketry, bags, plain paper books, artists' cards, special soap, painted glass and stained glass mirrors; it will also be possible to buy a painting or an original print.

East Finchley Open hopes as many people as possible will be able to come and looks forward to meeting all visitors on the day.

## The curious incident of the litter in the night-time

By David Melsome

**It began as a one-off and then became an almost nightly occurrence. Strange piles of litter have been appearing regularly along Church Vale and Twyford Avenue to the puzzlement of people who live nearby.**

On several nights of the week, mainly Thursday to Sunday, someone is dropping rubbish in the gutter, and always the same items: a large Kleenex tissue box, tissues, a couple of water bottles and, sometimes, chocolate wrappers.

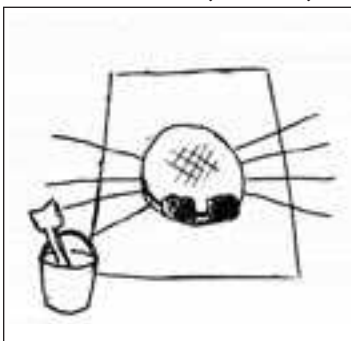
The piles always appear some time between late evening and early morning at a point where cars are not parked. They've been spotted at the end of Church Vale near the junction with Twyford Avenue, the stretch of Twyford Avenue alongside the Fortismere school playing field and the stretch of Twyford Avenue alongside the green at the East Finchley end. The area's street sweeper says it is the worst case of litter dumping on his round.

So who is responsible for this anti-social behaviour? One theory is that the culprit is someone working nights, may be a mini cab driver,

taking a break.

Residents are perplexed and not a little angry, considering there are litter bins only yards away. Their message to the mystery litter-bug is simple: bin it or take it home.

*Spiderama*  
by Ashley



Red-back spider

## St. Johns Christian Spiritualist Church

4 Woodberry Grove - North Finchley

**Just behind Homebase**

phone 020 8446 3544

Services: Sunday 6:30 pm - Thursday 7:30 pm

Spiritual healing and Private Readings every Tuesday 1 - 3 pm

**Different clairvoyant mediums every week!!**

Regular Workshops - Development circles - Friendly atmosphere - childrens corner

**ALL WELCOME**

*Invitation to explore yourself!*

Change your beliefs and change your life. Find out how. Come to a free 'Introductory Talk' about Avatar®, or buy the book 'Living Deliberately' by Harry Palmer

Contact: Julie Armitage.

Tel: 020 8445 4559

Mobile 07802702852

Email [Julie@avatar-london.co.uk](mailto:Julie@avatar-london.co.uk)  
[www.avatar-london.co.uk](http://www.avatar-london.co.uk)

Create Magic in your life

Avatar®, is a registered trademarks of Star's Edge, Inc. All rights reserved





## A walk on the Olympic site

By John Lindsay

**Sunday 24 June was the last day for walking the site of the 2012 Olympic Games before the bulldozers moved in. Star athletes Daley Thompson and Tessa Sanderson were on hand to inspire the final groups of walkers.**

Our group was led by Chris, who should become an East End legend if he is not one already. Chris's two-year-old grandson Jack was also in our group and remained in good spirits throughout a tough two-and-a-half hour trek under Glastonbury weather conditions: obviously a chip off his granddad's block.

### Matchgirls and cholera

The area is steeped in social history. The first building of interest was the factory in which the matchgirls won their legendary strike in the late 19<sup>th</sup> century, a key moment in feminist and socialist history, as Chris reminded us.

Further along we came across the curiously named Greenway - green on top certainly - where a fascinating walk

can be done. The structure is actually a massive sewage pipe. It was built in the 1860s as a result of the work of Dr John Snow who identified the link between cholera and dirty drinking water.

Dr Snow noticed that the prisoners in Pentonville Prison never got cholera, Chris said. Snow linked that to a water supply that was perfectly clean, coming from a deep bore well (a rare case of being better off in prison than out?). Readers with a fondness for classic London pubs will be familiar with the John Snow pub in Soho, a fitting tribute to the doctor who saved the lives of countless Londoners.

Later on we saw the extraordinary pumping station for this

sewage system, a building more reminiscent of the Taj Mahal than an industrial site.

### And the future?

The canal and waterway system on our walk is extensive and impressive and will, it is hoped, be opened up to a huge public as a result of the Olympic development. There is already some wildlife, despite the derelict nature of much of the site, and this will be encouraged.

There is vigorous local pressure to ensure that the area will be enhanced after the Olympics and not left as a white elephant. The social pressures were illustrated aptly by the fact that Chris himself has lost his home and been rehoused as part of the development. He nevertheless remains optimistic that East End history will continue on its fascinating path.



The air raid shelter in East End Road. Photo by Craig Johnson

## A sheltered childhood

By Craig Johnson

**While trying to help the RSPCA catch a poorly fox seen limping around Sedgemere Avenue and Elmhurst Crescent, just off East End Road, we stumbled upon a 1940s public air raid shelter still fitted with 14-inch brick walls, a one-foot thick reinforced concrete roof and bunk beds.**

Shelters such as this were built to accommodate about 50 families from nearby estates. In 1935, Prime Minister Stanley Baldwin had published a circular entitled 'Air Raid Precautions', obliging councils to protect local people in war. By the summer of 1938, the approach of war meant the building of community shelters got under way in earnest.

The structures were dark, cramped and smelly places and the chemical toilets did not always work. People with their own gardens had the space to install their own underground garden shelters which were little better but did save lives.

### Betty's story

Barnet resident Betty Abbott, 76, recalls using an Anderson shelter in her garden when she was only eight years old. Her story is told in the BBC's *People's War* series and is contributed by RSVP Barnet. Betty said: "Inside there was a

wooden floor, a small mat, two bunks across the back and two wooden chairs together with a small paraffin lamp.

"At this time the air raids in Barnet were quite bad and almost every night we slept in our shelter. My mother was quite strict about this, but not so my aunt, who liked her comfort. One night the bombing was bad and my father wanted to go out into our shelter, but my aunt said 'No way'.

"It was just before 9 o'clock when bombs dropped on the houses in the road behind ours, demolishing them. One bomb fell behind our shelter blowing it into a large hole in the garden; fortunately for us, all this took most of the blast. The noise was tremendous and we were all very frightened." Betty's father took her and her sister to stay with a friend in East Finchley, where they went to school. She remembers the war as sometimes exciting but often very frightening.

## KALASHNIKOV KULTUR

By Ricky Savage, the voice of social irresponsibility

### Live fast, die young...

**It's official, rock'n'roll is dangerous and making it to stardom is a sure fire way of increasing your chances of an early death. This has nothing to do with horror stories told to frighten children, this is the result of research. Yes, folks, it's been proved that becoming a rock star increases by 300% your chances of dying within five years of making it big. It's almost enough to encourage kids to become accountants instead.**

In the real world rock'n'roll has always been dangerous. It's about sex, it's about drugs, it's about trashing hotels, it's rock'n'roll. And if you're going to take it to the limit, sometimes you're going to go right over the edge and not just hope to die before you get old, but actually do something about it.

Leaving out the cancers and bizarre gardening accidents, rock'n'roll is littered with the fast living who forgot to slow down before they ran out of road, sometimes quite literally. Brian Jones ended up at the bottom of his pool, Janis Joplin, Sid Vicious, Johnny Thunders all overdosed. Kurt Cobain shot himself on purpose, Terry Kath did it by accident and Tupac and Notorious B.I.G. got shot just like John Lennon.

Planes and cars have all contributed to the short and fast lives of rock'n'roll stars, from Buddy Holly wanting to get his washing done to Marc Bolan getting wrapped round a tree. Led Zeppelin might be reforming to play for the rich in November, but back in 1970 they reckoned they'd all be dead by the time they were 30 and Pete Townsend probably meant it when he wrote My Generation.

And now, as professors of health and safety want to put warning stickers on electric guitars, we have Amy Winehouse and Pete Doherty to keep us amused. So what if they are happily taking hedonism to new pharmaceutically enhanced levels? That's fine by me. Taking it to the limit is what rock'n'roll has always been about and believe me, I've been there, I even used to have the tee shirt. Anyway, someone's got to do it so that you don't have to, and health and safety stickers on electric guitars won't change anything.

## Christina's anniversary

By Betti Blatman

**Christina Hair and Beauty Salon at 36 Aylmer Parade, Aylmer Road, has been a successful hairdressing salon since 1972 and celebrates 35 years in business on Tuesday 16 October with a champagne reception to the sounds of 1972 music.**

Having started as a hairdressing and manicure salon, it has expanded to offer a full range of beauty treatments, all of which are being offered to the first 35 clients at a 35% discount which can be used on the day or until Thursday 18 October. For further information, please contact Christina on 020 8340 4002.

## Cree Godfrey Wood Solicitors

Commissioners for Oaths

Hours: 9.30am to 5.30pm.

email: [admin@creegodfreyandwood.co.uk](mailto:admin@creegodfreyandwood.co.uk)

28 High Road, London N2 9PJ

Tel: 020 8883 9414 / 9496 / 0989

[www.creegodfreyandwood.co.uk](http://www.creegodfreyandwood.co.uk)

### LOOKING FOR A CAT

Many cats and kittens needing good homes; some single, some in pairs.

If you think you can help get in touch with the local cat charity

ANIMAL AID AND ADVICE  
48 HIGH ROAD EAST FINCHLEY  
OR PHONE 7607 1723

### LOOKING FOR HOMES



## THE WINDSOR CASTLE

THE WALKS, CHURCH LANE, EAST FINCHLEY, LONDON N2 8DL

PHONE 020 8883 5763

\* COMFORTABLE, CLEAN PUB

\* FRIENDLY STAFF & LANDLORD

\* SECLUDED BEER GARDEN

\* GOOD VALUE LUNCH & EVENING FOOD

\* TRADITIONAL SUNDAY ROAST LUNCHES

\* GOOD SELECTION OF McMULLENS QUALITY CASK ALES AVAILABLE

HOURS: MONDAY-FRIDAY 11:30AM-2PM, REOPENING 4:30PM. SATURDAY & SUNDAY OPEN THROUGH THE AFTERNOON

# fiori

Stylish flowers

Unusual plants

Beautiful accessories

020 8883 8152

127 High Rd, East Finchley, N2 8AJ





## Regular Events

### SPORT & FITNESS

❖ **Finchley & Hornsey Ramblers Group** Call Vivien 8883 8190  
 ❖ **Glebelands Indoor Bowls Club**, Summers Lane N12. New and experienced bowlers welcome.  
 ❖ **Keep fit for the Retired** on Wednesdays, Christ Church N12. Call Bridie 8883 5269  
 ❖ **Muswell Hill Bowling Club**, Kings Ave, N10. New & experienced bowlers welcome. Tel: 8883 1178.  
 ❖ **Pilates** in East Finchley, qualified teacher. Contact Dee on 8883 7029  
 ❖ **Pilates class** Wednesdays, 2.15-3.15pm at Youth Theatre, N2. Ring Penny Hill 8444 2882.  
 ❖ **Tae Kwon Do** at The Green Man Thursdays 7-9pm 07949 612 706  
 ❖ **Tennis club** with four clay courts off Southern Road. Call 8883 7723.  
 ❖ **Wood Walk**, meet 10am at Cherry Tree Wood cafe on 1st & 2nd Mon of month for 1 hr walk, Call 8883 8750.  
 ❖ **Yoga, breathing & relaxation**. Weekly drop-in classes - N2, N6, N10. Phone Judy on 8444 7783.  
 ❖ **Yoga**, pregnancy yoga, meditation classes at Holy Trinity Church. Call Sunnah 07941 321 772 or visit [www.stretchingpeople.co.uk](http://www.stretchingpeople.co.uk)

## DANCE, DRAMA & CREATIVE ARTS

❖ **Art Classes**. For info call Henry on 020 8888 5133.  
 ❖ **Ballroom Dance Classes**, Wednesdays. Beginners 7.30pm, Improvers 8.30pm. St Mary's Church Hall, Finchley. 020 8444 0280.  
 ❖ **Club Dramatika** drama club for kids. Call 8883 7110.  
 ❖ **Creative writing classes** in informal, friendly atmosphere. Tel Sallie Rose 0208 444 7217  
 ❖ **East Finchley Writers Group** Creative writing 6.30pm every Weds at the Old White Lion. Contact Carola 8883 5808 or Lilian 8444 1793.  
 ❖ **East Finchley Writing Workshops**. poetry writing monthly on Saturdays. Contact Dennis Evans 8346 9528.  
 ❖ **Line dancing** Tuesdays from 8.30pm at The Constitutional Club. Call Maureen 8440 8530.  
 ❖ **Memory Lane Singing Club** - a communal singing club. Call Idit Gold 8458 4508.  
 ❖ **Over 50s Tea Dance** at Christ Church, North Finchley. Every Weds, 1pm. 020 8444 0280.  
 ❖ **Learn to sing** at Finchley Methodist Church. Call 8883 4070 for info.  
 ❖ **Street Dance** every Tuesday at Old Barn for children of various ages Contact Lorna 07976 203669.  
 ❖ **Symphonic Wind Orchestra** Contact Caroline Egan 8340 2706  
 ❖ **Tap Dance** for children beginning at Old Barn every Monday, Contact Sharon 8349 4613

## CLUBS & SOCIAL

❖ **Bingo Club** Mondays 7-9 pm, Green Man Centre, Contact: Jan 8815 5459  
 ❖ **Contact Lunch Club** Tuesdays at the Green Man. Call 8444 1162 to book.  
 ❖ **EF National Childbirth Trust** contact Joanna Brunt on 8883 0941 or [joanna-brunt@cybergal.com](mailto:joanna-brunt@cybergal.com)  
 ❖ **Finchley & District Philatelic Society**, Contact Brian 8444 3251  
 ❖ **Finchley Jazz Club** 15 & 29 Oct at 8pm, Wilf Slack Cricket Pavilion, East End Rd, N3.  
 ❖ **Friendly Rubber Bridge** at The Old Barn. Contact 8349 4613  
 ❖ **Friends of Cherry Tree Wood**. [www.cherrytreewood.co.uk](http://www.cherrytreewood.co.uk) or call 020 8883 7544.  
 ❖ **Haringey Recorded Music Society** informal meetings locally. Call David Mouldon on 8361 1696.  
 ❖ **Highgate Film Society**, contact Admin Office 8340 3343 or email: [admin@hlsi.net](mailto:admin@hlsi.net).  
 ❖ **North London Bridge Club**, Muswell Hill. Contact 8348 3495  
 ❖ **Muswell Hill and Highgate Pensioners' Action Group** Call Bob Cottingham on 8444 7635.  
 ❖ **Muswell Hill Tetherdown Bridge**, contact 8883 4390  
 ❖ **Old Barn pre-school club**, contact 8349 4613/1961  
 ❖ **Parent & Toddler Group**, Green Man Centre, Julia 8444 2276  
 ❖ **Probus Lunch Club** for retired professionals. Call John 8883 8114.  
 ❖ **Stepping Stones**, interactive play session for under 3's. Karen 07957 278860.  
 ❖ **SwampRock** events feature a different band each month. See [www.swamprock.org.uk](http://www.swamprock.org.uk)

# Explosive art

**Amazingly energetic artwork by El Glinoeer was on show at Chorak and will be making a return visit in November.**

El's collages and paintings may be contained within a standard four-sided frame but their energy and complexity seem to make them explode off the wall.

El, who lives in Muswell Hill, uses many recycled materials, including ironmongery and cat food boxes. She is also a specialist in beautiful and intricate glass work, formed using a kiln in her back garden.

"I try to transform something static like glass or paint into something liquid with a lot of movement," she said. "I'm interested in colour, light and explosive growth."

These inspirations also manifest themselves in more restful paintings of abundant flowers tumbling and spiraling out of delicate vases.

El's work, which is available to buy, will be returning to Chorak, High Road, throughout November.



El Glinoeer with one of her works of art displayed in Chorak. Photo by John Lawrence

## Local artist answers the call of the sea

By Jean Burnett

**Well-known East Finchley Open artist Mari I'Anson is exhibiting some of her work at the Lloyd Gill gallery in Weston-Super-Mare. This represents a return to her home town where she studied at the local art school in the 1950s before coming to London. Some of Mari's paintings from her time in Singapore and Thailand are on show together with several local artists who are showing more modern, conceptual work.**

The Lloyd Gill gallery is based in a beautifully restored Victorian house that is both home and studio for the young artist who runs the gallery. "I wanted Mari's work to stand out in this setting which is different from her usual background," said Lloyd.

Mari remains heavily influenced by her early years near the sea and in the Somerset countryside. "They influenced my perception of light and space," she says.

## Terrorist at the Noble Sage

By Daphne Chamberlain

**In August, The Noble Sage in Fortis Green presented another successful free film show. *The Terrorist*, directed by Santosh Sivan and released in 1999, was a harrowing experience. It showed the training and preparation of a 19 year-old Tamil girl, Malli, assigned to assassinate a leading politician.**

The story had obvious similarities to the assassination of Rajiv Gandhi by the world's first high profile suicide bomber, and was extraordinarily powerful.

Shot on a low budget in a couple of weeks, this film won instant international acclaim. Ayesha Dharker plays Malli as a girl driven by hatred, at first proud of her mission, but gradually disturbed by the wisdom and compassion of an elderly couple in the village where she is secretly preparing for the assassination. They are part of a supporting cast who arouse our emotions, while Malli herself seems to stay rigid and impassive.

I felt sadness for the suffering of many of the characters,

frustration at Malli's closed vision, and anger at her "trainers", who themselves stayed clear of the action.

At the end, the girl's previously deadpan face shows doubt, indecision, and finally naked terror. Does she actually detonate the bomb? It's not 100% certain, but the release of tension doesn't disguise the fact that there can be no happy ending.

Though, tragically, this is an international theme, the other great player in the film is India itself. The feeling of the country was intense even to those of us who have never been there, and overwhelming to one of my companions who had lived there for some time. This was a remarkable film.

## What's On...

E-mail your listings to: [the-archer@lineone.net](mailto:the-archer@lineone.net)

### Saturday 6 October

• Coldfall Wood double clean-up: 11am either at top reed pool (with wellies) to tackle stream or at edge of field to litter-pick in wood. Organised by Friends of Coldfall Wood.  
 • An evening of music and laughter with *The Confections*, 7.45pm in St Mary's Parish Hall, 279 High Road. Tickets £8 and £7 (concessions) including light refreshments from 84440 2817 or at the door on the night.

### Sunday 7 October

• Barnet & Enfield Friends of the Earth Farmers' Market at the Sacred Heart School, 2 Oakleigh Park South, Whetstone N20 9JU, 10.30am to 1.30pm. Includes Caribbean cooking, locally made soaps and cosmetics from natural ingredients and plants, the Barnet Cyclists, Agenda 21, Barnet Freecycle and the London Wildlife Trust.

### Sunday 14 October and Sunday 11 November

• Green Artisan Farmers' Market at Martin Primary School, 10am – 2pm. Come along and support East Finchley's own market. Enquiries to Wayne Atkinson, [info@green-artisan.org.uk](mailto:info@green-artisan.org.uk) or 077 579 808 48. Further information at [www.green-artisan.org.uk](http://www.green-artisan.org.uk).

### Sunday 14 October

• Live music at East Finchley Methodist Church, High Road, 8pm; folk songs, madrigals and show tunes from Barnet Vocal Ensemble. Free admission with charity collection. Venue fully accessible to people with disabilities.

### Friday 19 – Sunday 21 October

Oktoberfest, weekend German beer, wine and sausage festival at the East Finchley Constitutional Club, The Walks. For programme, see [www.east-finchley.com](http://www.east-finchley.com).

### Wednesday 24 October

Stitch & Kvetch, bring your own stitching projects along or come and learn how to start one, whilst indulging in some good old-fashioned kvetching. Drop in any time from 8-11pm  
 £3, The Roebuck, 15 Pond Street, NW3 2PN.

### Thursday 25 October

The Truth about Dick Whittington, a talk to the Finchley Society, Avenue House, East End Road, 8pm. Entry for non members, £2.

### Tuesdays in October

Treehouse, a parent and toddler group organised by the Jewish Community Centre for London with live music, play and arts and crafts, 3pm-5pm on 2, 9, 16, 23 and 30 October. £5/£7.50 family fee. Jewish Vegetarian Society, NW11. No need to book. 020 7431 9866. Tube: Golders Green (northern line).

### East Finchley Arts Festival - Wednesday 3 October – Sunday 14 October

**Music:** Thursday 4 October, 7.30pm, London Ripieno Society, Elgar in Miniature; Friday 5 October, 7.30pm, Songs of Enchantment, Emma Kirkby & The English Consort of Viols; Saturday 6 October, 12.30pm, Lunch Hour Recital, Jennifer Bate, Organ; Saturday 6 October, 7.30pm, London Mozart Players, Rimantas Vingras, Piano; Sunday 7 October, 7.30pm, Finchley Children's Music Group; Thursday 11 October, 7.30pm, Rivers of Babylon; Saturday 13 October, 12.30pm, Lunch Hour Recital, Patrick Naylor & Tim Robinson, Guitars; Saturday 13 October, 7.30pm, Fidelio Piano Quartet; Sunday 14 October, 7.30pm, London Vintage Jazz Orchestra. **Poetry:** Wednesday 10 October, 7.30pm, Fleur Adcock & Elaine Feinstein read from their work. **Drama:** Friday 12 October, 7.30pm, Bruce Purchase in *Johnson is Leaving*. **Children's events:** Tuesday 9 October, Recorder Day with Alan Davis at Martin Primary School; Sunday 14 October, 12.30pm, Children's Story Time with June Peters in church garden if fine but church hall if wet. **Art:** Exhibition by London and international artists in aid of the North London Hospice. Open during rehearsals, evening performances and weekends between 11am and 5pm. All events at All Saints Church, Durham Road, Box Office: Les Aldrich, 020 8883 5631 and Black Gull Books, 020 88897112

### What's on at artsdepot, North Finchley during October

Salsa big band, Bacalao, Saturday 6 October, 8pm; Raphael Bonachela Dance Company present Voices, Tuesday 9 October, 8pm; Royal Philharmonic Orchestra, Wednesday 10 October, 7.30pm; An Evening with Rabbi Lionel Blue, Thursday 11 October, 8pm; Klezmer Swingers, Thursday 18 October, 8pm; It's Felix Dexter, Don't It, Friday 19 October, 8pm; Abram Wilson & The Delta Blues Project, Saturday 20 October, 8pm; Potted Potter - The Unauthorised Harry Experience - A parody by Dan & Jeff, Wednesday 24 - Sunday 28 October, 12pm & 3pm (autumn half term); Caught in a Rabbit's Headlights - Milton Jones, Thursday 25 October, 8pm; Jo Caulfield Goes to Hell, Saturday 3 November, 8pm. **Gallery Talks:** John Constable and Hampstead, Tuesday 9 October, 7pm; Rembrandt and the Dutch Republic, Tuesday 16 October, 7pm; British Modernists, Tuesday 23 October, 7pm; This Green and Pleasant Land, Tuesday 30 October, 7pm; Blake's Jerusalem, Tuesday 6 November, 7pm; The Jewish Contribution to Modern Art, Tuesday 13 November, 7pm.





## Letters

### Arson attempt in Cherry Tree Wood

Dear Editor,

I was in Cherry Tree Wood with my children on the August Bank Holiday at around 2.30pm when we noticed three young men and a young woman, all aged about 18-19, messing about in the children's playground. They were drinking beer from cans and had a carrier bag full of beer cans and cigarettes.

They headed off into the back corner of the woods by the railway line. At about 3.30pm I went into the woods in the same direction with my children and we met the teenagers coming out. When we got to the back corner near the fence, we found a fire burning. We tried to put it out by smothering it with logs but were unable to do so. We went to the cafe where we got two large jugs of water, and we succeeded in putting the fire out with these.

I have reported this incident to East Finchley Police Safer Neighbourhood Team and to Barnet Council. I am very concerned that had we not found the fire and acted when we did, there could have been an extremely serious outcome involving extensive damage to the woods and injury to some of the many families who were there for Bank Holiday Monday.

This disturbing incident suggests to me that there is an urgent need for the permanent park keeper to be restored to Cherry Tree Woods.

Yours faithfully,  
Name and address supplied

### Shrimp on the barbie

Dear Editor,

Barbecues have become a nuisance in Cherry Tree Wood, especially because of the fire risk they pose. If they are so popular with youths, I wonder if the park could set up a designated area for them?

It has been suggested, with adequate safety measures, to install fixed barbecues in the picnic area by the park's café, as with some parks in Australia. Like all the improvement proposals, however, Barnet Council would need to pull its finger out and pay attention to the smaller parks' needs, not just the big 'premier parks'.

Already there have been some improvements in Cherry Tree, mainly thanks to Sally and Ryan, who tend

the café. For example, after the council wanted to remove the empty flower beds, Sally paid gardeners herself to replant them. The pair have also put up a clock outside and are trying to improve the park's toilets.

After all the work and support from local residents, showing how much they care about the park, it seems only fair that the council should acknowledge this and help out.

Yours faithfully,  
Jake Eiseman-Renyard,  
Fortis Green, N2.

Life could be easier

Dear Editor,

I love living in East Finchley and have lived here for many, many years. I saw your article about raising the status of East Finchley (REEF loves N2, THE ARCHER, August 2007). But what has gone wrong here? First of all, after 60 years, Barclays Bank here is closed. Secondly, the post comes after four o'clock most afternoons. Thirdly, the bus service is so erratic: 25 minutes apart, then two together. Fourthly, there are no decent shops here; there's no Sainsbury's, no WH Smith, no Boots. Can't we do something to make things a bit easier?

Yours faithfully,  
Mr Burgess  
Creighton Avenue, N2.

Bigger and better

Dear Editor,

Finchley has got bigger! At least so it appears if you walk along Creighton Avenue from the High Road. A 'Haringey' sign now stands some 36 feet east of the 1934 borough of Finchley boundary marker, and a house formerly in Haringey is now in Finchley. Has anyone else noticed changes in territory?

Yours faithfully,  
Robert Winton,  
Creighton Avenue, N2.

Send your correspondence to: "Letters Page", The Archer, PO Box 3699, London N2 8JA or e-mail the-archer@lineone.net.

Letters without verifiable contact addresses will not be reviewed or printed. Contact details can be withheld, however, on request at publication.

## October at the Phoenix

By Paul Homer, Phoenix Cinema general manager  
Our first major film of the month will be *Control* on 5 October, the biopic of troubled Joy Division singer Ian Curtis. Directed by Anton Corbijn, it was rightly praised at this year's Cannes Film Festival and is one of the best British films this year.

To mark the recent death of music guru Anthony H Wilson we're playing a double bill of Michael Winterbottom's *24 Hour Party People* and *A Cock and Bull story* on 7 October.

Moving forward to the middle of the month we present *The Counterfeiters*, more proof of the recent resurgence in German cinema. The film looks at a little-reported incident when the Nazis forced Jewish counterfeiters to create copies of British and American currency in an attempt to destabilise their economies. It's a terrific picture and one that deserves to be seen.

We've a double bill on 14 October bringing back *La Vie en Rose* for those of you who missed it the first time. It's playing with a portmanteau film *Paris Je T'aime*, which features a slew of great directors including the Coen Brothers, Walter Salles, Gus Van Sant, Tom Tyker, Gurinder Chadha and many others.

Finally we close October with the controversial but always entertaining Michael Moore. His new film *Sicko* opens at the Phoenix on 26 October. Call our box office on 020 8444 6789 or visit [www.phoenixcinema.co.uk](http://www.phoenixcinema.co.uk).

## Creighton Avenue speed control plans

In 2008 drivers may face slower journeys along and near Creighton Avenue, if current proposals are approved.

The scheme, designed to improve safety for drivers and pedestrians, includes speed cushions, road humps, a 20mph speed limit and a mini-roundabout at the junction with Beech Drive.

Haringey Council has written to residents of Creighton Avenue and surrounding streets to outline the traffic-calming measures. A public exhibition displaying the plans was held on Saturday 22 September at Fortismere School, with council officers available to answer questions. The deadline for responses was Friday 28 September.

## A new garden begins to grow

By Betti Blatman

"A flowerless room is a soulless room ... but even one solitary little vase of a living flower may redeem it." This quotation by Vita Sackville-West, novelist and creator of Sissinghurst Gardens, expresses the philosophy of Jackie Ettinger, proprietor of Jackie's Garden at 119 East End Road.

The official opening of her flower and plant emporium on 2 September was well attended by friends, neighbours and customers who enjoyed refreshments to the sounds of Kletzner duo Balabustah.

"I am bowled over by the response to the shop," said Jackie, who, after leaving school, spent a year working on a kibbutz and then obtained a B.Ed in Art and Drama. After a varied career which included teaching, working for an export company in Paris and then ten years on a national newspaper, Jackie decided to formalise a lifelong passion for flowers and plants by studying Horticulture and Planting Design at Capel Manor College, Enfield.

Jackie intends to introduce people to unusual plants and flowers not usually found on the High Street. In addition to a wide range of cut flowers, bouquets and arrangements,

contemporary and vintage vases and containers are on sale with books and magazines to inspire her customers.

If required, Jackie can draw complex planting plans but also offers a service which she refers

to as the horticultural equivalent of a start up course for people who wish to develop and maintain their gardens themselves but don't have the confidence to begin. Jackie can be contacted on 020 8444 0153.

## OBITUARY

### Derek Ball, 1937 - 2007

A celebration for the life of Derek Ball was held at St Marylebone Crematorium, East End Road, on Friday 3 August.

Local people became aware of what a special person Derek was when he received a top award at Barnet's Annual Civic Awards ceremony in 2005. But one section of the community already knew and had reason to be grateful for the gifts Derek possessed, namely the children and staff at Martin School. In fact, they nominated Derek for the award in recognition of his amazing contribution to the school.

After retiring from his job as a carpenter and wanting to do something for the community, Derek became a volunteer reading helper at Martin School, which his children Steven and Jennifer had attended in the 1960s and 1970s. As his time there gradually expanded, Derek was able to use his wide range of talents. He regularly accompanied educational visits

where his skill with a camera was revealed and soon he became the official photographer, recording school events for posterity. Derek had a knack of being able to find things that were needed and fix things that weren't working properly. This even included computers, about which he knew a great deal, and he was able to pass on this knowledge to pupils and teachers. In short, Derek became an important and invaluable member of the school community who went out of his way to help others and who will be remembered as a lovely, warm and caring person.

Derek had lived in Brackbury Avenue since 1962 with his wife Doreen, whom he married in 1960. No doubt his neighbours will share similar memories of this man, of whom one child said: "He was always prepared to give up time for anyone who needed help."

## Midhurst Butchers

Certified organic meat at reasonable prices  
Free-range poultry  
Home-made sausages (including Boerwors)

2 Midhurst Parade,  
Fortis Green, London N10  
Tel. 020 8883 5303

### The East DENTAL

Tel: 020 8

### The East Finchley DENTAL CENTRE

Dr G Freeman BDS (England), MRC (London)  
Dr A Mohamed BDS (Sweden)  
Dr Patricia Cigna BDS (England) and Associates

NHS DENTAL CENTRE OF EXCELLENCE

To register for NHS Dental Care or if you require emergency treatment please call

**Tel: 020 8444 3436**

Web: [www.eastfinchleydentalcentre.co.uk](http://www.eastfinchleydentalcentre.co.uk)

- Friendly, experienced, dedicated Dental Team
- General Dental Care and Service
- Special care for Nervous patients
- Dental Care for Children
- Preventative Dental Care
- Cosmetic Treatment
- Private treatment undertaken
- Teeth Whitening

144 High Road, East Finchley, N2 9ED

All are welcome to register and be treated at The East Finchley Dental Centre, in a modern and friendly clinic, where all can feel welcome.

## Jennie Mann Flowers

- Hand tied bouquets
- Scented Candles
- Gifts
- Events and Corporate



- Planted arrangements
- Homewares
- Orchids
- Vases and Containers

Deliveries throughout northwest London and beyond  
63a Church Lane, East Finchley, London N2 8DR tel: 020 8365 2284  
email: [info@jenniemann.co.uk](mailto:info@jenniemann.co.uk)  
[www.jenniemann.com](http://www.jenniemann.com)





Shoes, Trainers, Sandals, Bags and Luggage

Complete Repair Service by a craftsman  
Same day if required

Key Cutting

1 Manor Park Rd. N2, behind 88 Church Lane, opposite Trinity Church  
Tel: 07956 329 150 Open 12-8pm (not Wednesdays)

# THE ARCHER

Published by East Finchley Newspapers, P.O. Box 3699, London N2 8JA. www.the-archer.co.uk



## India through the eyes of its women

By Dawn Powell

East Finchley's Noble Sage art gallery in Fortis Green is holding a new exhibition to explore the question of what it means to be female and what it means to be Indian.

Director Jana Manuelpillai originally conceived the idea of *She, India*, a mixed media collection of both well known and unknown artists, as a way of showcasing female Indian contemporary art.

He says: "Female art in India is relatively rare. It is something that has yet to find its momentum, particularly in the south where I specialise." Then he realised that the exhibition could address a much larger issue. "I started thinking about what the reason was for including one artist but excluding another. It raised the question of who is more Indian

than another." The exhibition now includes work from artists with different links to India. Jana says: "It includes Indian artists who live in Britain and British artists who live in India. The whole range is there."

Neera Sen, who has several pieces of work in the exhibition, is a typical example of the artists profiled by the gallery. Born in Calcutta, she has lived in Britain for all of her adult life and currently lives in north London.

The Noble Sage is the first gallery in the UK to specialise exclusively in Indian contemporary art. The *She, India* exhibition will run until November.

## Curry and wine at the Noble Sage

By Daphne Chamberlain

"You'll like this curry. You're Indian," said the kindly dinner-lady to little Rohan Candappa at his London school. It was "grey minced meat with raisins", and nothing like the curry his Sri Lankan family ate at home. Mind you, neither is most of the food served in Indian restaurants today, but Rohan accepts that cheerfully. "It doesn't have to be the same," he told his audience at the Noble Sage Gallery last month.

He was one of two authors reading from their new books for one of the final events of London's Indian Arts Festival. His *Picklehead* is a history of curry in Britain, mixed with a generous dollop of memoirs about himself and his family.

Also reading was Jae Watson, an Englishwoman writing about *The Journey*, a story of fear and love. Two girls leave London after the terror-

ist attacks, but run straight into more of the same in India.

It's not just the subject matter, the wine and the nibbles that make these evenings at the Noble Sage. It's also the changing backdrop of paintings and sculpture.

For more information about the Noble Sage, the art gallery at 2A Fortis Green, N2, contact 020 8883 7303 or www.thenoblesage.com.

## Film and friendship

The Phoenix Cinema has started running 'Close Encounters' evenings for people who love great films and want to meet new friends, maybe even someone special.

The second Thursday of each month is the time for the special showings. Filmgoers can catch the latest movie, then retire to the Noble Sage Gallery just around the corner

in Fortis Green to have a drink and a chat.

Tickets cost £10 and all guests will be offered a badge, a complimentary drink before the screening and a glass of champagne later on at the gallery. For details of future Close Encounters, call the Phoenix box office on 020 8444 6789.

## Sheila, take a bow

Seen at the Hampstead Garden Suburb Horticultural Society Autumn Show, *ARCHER* reporter Sheila Armstrong winning 2nd prize for the heaviest marrow. Well done, Sheila.

### STEWART DUNCAN

OPTICIANS, SINCE 1962

- EYE EXAMINATIONS
- DESIGNER EYEWEAR
- CONTACT LENSES
- LATE NIGHT
- DYSLEXIA CLINIC
- DVLA APPROVED
- OLD FASHIONED SERVICE

020 8883-2020  
126 HIGH ROAD, EAST FINCHLEY



## Mini Glastonbury was pure gold

By Sippy Azizollah

It was a perfect day of September sunshine in Cherry Tree Wood for the Muswell Hill Festival. Long queues formed for the barbecue at the park café and other food stalls gave a taste of Chinese, Thai and Afro-Caribbean cuisine.

The donkey derby and dog obedience shows were great fun to watch as were the karate and juggling shows. There was plenty there to keep children amused including bouncy castles and fruit and veg art. The highlight of the day came at about 4.30pm when Spandau Ballet's Tony Hadley came on stage to sing his hits *True* and *Gold*, as well as other crowd pleasers. It felt like being at a mini Glastonbury with a jumping, singing crowd lapping up every beat.

I can safely say a brilliant day was enjoyed by all. The only let-down was that there were no loos provided so everyone had to use the loos in the park, which are in a less than perfect state. Something for the organising committee to think about for next year.

Tony Hadley singing *Gold*.  
Photograph by Helen Drake



## Cash help for community groups

Nearly £470,000 of grant funding has been handed over to local organisations to improve quality of life in Barnet.

The grants were awarded through the Barnet Local Strategic Partnership, which invited organisations to bid for money available through the Government's Neighbourhood Renewal Fund.

Winning projects included the Barnet Bulldogs Basketball Club, allocated £28,000, Barnet Community Transport, who were given £79,500, and Norwood, an organisation for young disabled people, who received £40,901.

Barnet Bulldogs will use the money to provide a community development programme using basketball to engage young people at risk of getting involved in petty crime.

Transport will be able to

employ extra staff to improve further the work being done by the borough's only mobile youth centre, Rolling Base, a bus kitted out with the latest high-tech music equipment, wi-fi internet and its own

satellite dish.

Norwood will be able to provide emotional support to young disabled people enabling them to have a successful and seamless transition into adulthood.

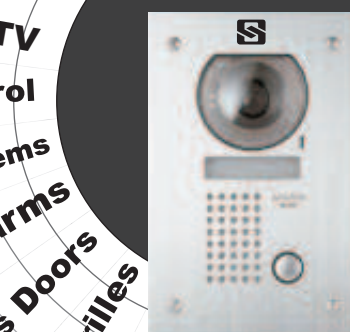
### SECUREBASE

DOMESTIC COMMERCIAL INDUSTRIAL SECURITY

Est 1988

CCTV  
Access Control  
Intercom Systems  
Intruder Alarms  
Locks Doors  
Safes Grilles  
+ EMERGENCY LOCKSMITHS

WHY NOT HAVE  
Your Security Problems Solved!  
A FREE ALARM SURVEY



0800 279 0792

112 High Rd • East Finchley • London N2

www.securebase.co.uk