

MULBERRY
ESTATE & LETTING AGENTS

A multiple agency instruction with our company for a sole agency fee.

- ◆ Three strategically located offices.
- ◆ Extensive experience of the locality.
- ◆ Free evaluation without obligation.

East Finchley
020 8444 4000

Muswell Hill Alexandra Park
020 8444 9000 020 8889 4322

www.mulberryestateagents.com

Local News Is Our Aim

THE ARCHER

GLH

CAR SERVICE
020 8883 5000

August 2003 No. 123
ISSN 1361-3952

20p
where sold

A community newspaper for East Finchley run entirely by volunteers.



The injured woman was taken to hospital in the air ambulance. Photo by John Dearing

Woman Found Injured near Tube Line

By John Dearing

Around 13:45 on Sunday 20 July, an elderly woman was found between the tracks of the Northern Line, more or less directly underneath the East End Road bridge, north

of East Finchley station.

The air ambulance operating from the Royal London Hospital was called and landed in the station car park around 14:00. British Transport Police

and paramedics were also in attendance. Northern Line train services were stopped in both directions, and the woman, who was still alive but badly injured, was treated *in situ*, before being taken to hospital in the air ambulance. It was not known exactly how she came to be next to the track, but it seems unlikely that she fell from the parapet of the bridge. It is more probable that she entered the restricted area at the side and in attempting to cross the track was in collision with a train.

One local resident said that he had heard the helicopter landing and on looking out saw people around the track, while trains were still running.

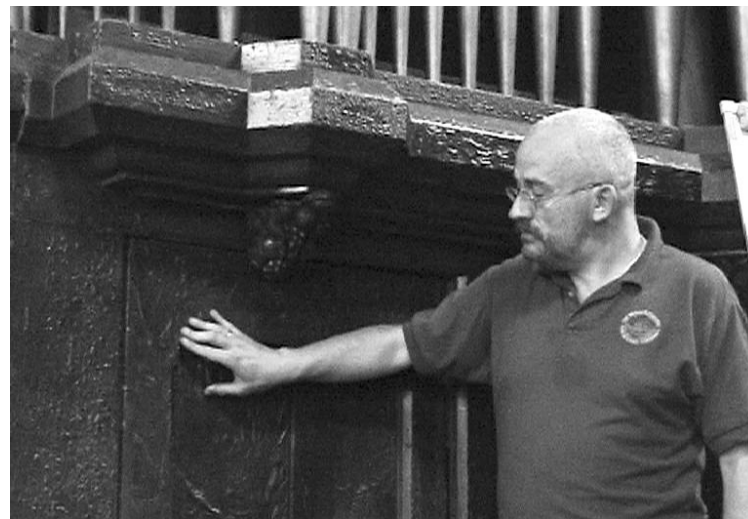
Arson Attack on Church

The fire brigade was called out in the early hours of Tuesday 15 July to a fire in the East Finchley Methodist Church on the High Road.

The fire was discovered by the cleaner at about 6:30am. She then promptly alerted the police and the fire brigade.

Entry was gained into the church by breaking a side window on the Park Road side of the building. The altar had been overturned and there was extensive damage to the consecrated area where the fire was started. The wooden

pelmet and curtains behind the altar were completely destroyed. The organ, which is a smaller version of the one originally in Alexandra Palace, sustained damage to the leather lining of the organ and the bellows. The heat caused the couplers to crack and the organ pipes are full of dust, making this beautiful instrument unusable.



Building Steward, Robert Alderman examines paint, which has bubbled up in the heat under the pipes of the organ. Photo by Erini Rodis

The damage caused by heat and smoke means that the building is out of use until at least the end of August. As well as being a church, it was used by several groups. The one most severely affected being the mothers and toddlers group.

On Saturday, a small group of church members rallied round to help clear up the charred remains and the minister Mrs Brenda Dunstone said that although the church could not be used, services could be held in the Fellowship room.

The forensic team has been able to obtain some clues, but anyone who might be able to help with the investigation is asked to contact Crimestoppers on 0800 555 111.

Everything Electrical

ALL DOMESTIC & COMMERCIAL WORK UNDERTAKEN BY QUALIFIED ELECTRICIANS

Extra Sockets and Lights Interior / Exterior lighting design
Security Lighting Maintenance Contracts
Fault Finding and Repairs Installation Certificates
Telephone and Television Points

38, High Road, East Finchley N2 9PJ

Tel: 020-8444 7994 Fax: 020-8444 6075 Mobile: 07973 509 322

Internet: <http://www.everythingelectrical.com>

Cut-price Fragrances

Coral Pharmacy

Photo D&P only £2.99 for up to 40 exp (35m) same day service

Stockists of a wide range of vitamins, homeopathic remedies, and herbal products.

Open Till 6:30pm (Mon - Fri) 6pm Sat - Parking Available

129 East End Road N2 0SZ Tel 8883 0442

PRICKETT & ELLIS TOMKINS

36 High Road East Finchley N2 9PJ

020 8883 0033

Properties urgently required - now is the time to sell!

Estate Agents and Valuers. Established 1767

Hotblack Dixon & Co. Estate Agents

Our success rate in N2 is very high indeed, obviously in Hampstead Garden Suburb but also in East Finchley.

We have often obtained better prices from our base in the Suburb, so

Please call us for a free valuation or try us if you are on a multiple agency basis

17 Market Place, Hampstead Garden Suburb
London NW11 6JY

020 8458 8411

• Visit your community newspaper on-line at www.the-archer.co.uk •